

| Landowner | Lot/DP |
|-----------|------------|
| 1 | 145/754136 |
| 2 | 201/754102 |
| | 98/754102 |
| | 16/754102 |
| | 92/754102 |
| | 2/232571 |
| | 167/754102 |
| | 56/754102 |
| 3 | 12/754102 |
| | 23/754102 |
| | 22/754102 |
| | 90/754102 |
| | 165/754102 |
| | 117/754102 |
| | 91/754102 |
| | 178/754102 |
| 29/754102 | |
| 4 | 4/1066057 |
| 5 | 92/754136 |
| | 88/754136 |
| | 162/754136 |
| | 149/754136 |
| | 89/754136 |
| 6 | 59/754102 |
| | 47/754102 |
| | 57/754102 |
| | 58/754102 |
| | 40/754102 |
| | 1/721380 |
| | 133/754136 |
| | 117/754136 |
| | 95/754136 |
| | 41/754102 |
| | 102/754102 |
| | 48/754102 |
| | 18/754136 |
| | 123/754136 |
| 7 | 166/754102 |
| 8 | 15/754136 |
| | 56/754136 |
| | 55/754136 |

| Landowner | Lot/DP |
|------------|------------|
| | 96/754136 |
| | 137/754136 |
| | 103/754136 |
| | 63/754136 |
| | 47/754136 |
| | 48/754136 |
| | 46/754136 |
| 9 | 153/754136 |
| | 152/754136 |
| | 269/754142 |
| | 235/754145 |
| | 210/118333 |
| | 249/754145 |
| 10 | 2/1180139 |
| | 179/754102 |
| | 142/754136 |
| | 160/754136 |
| | 72/754136 |
| | 110/754136 |
| | 185/754102 |
| | 156/754102 |
| | 203/754102 |
| | 131/754136 |
| | 2/601586 |
| 157/754102 | |
| 11 | 147/754136 |
| | 35/754102 |
| | 127/754136 |
| 11 | B/417584 |
| | A/417584 |
| | 1/1180139 |
| 12 | 61/754136 |
| | 81/754136 |
| | 91/754136 |
| | 62/754136 |
| | 108/754136 |
| | 17/754136 |
| | 34/754136 |
| 2/222985 | |
| 13 | 281/754142 |
| 14 | 94/754136 |

| Landowner | Lot/DP |
|-----------|------------|
| 15 | 82/754136 |
| 16 | 93/754136 |
| 17 | 107/754099 |
| | 229/754122 |
| | 117/754099 |
| | F/418849 |
| | 1/575206 |
| 18 | 178/754099 |
| | 224/754122 |
| | 222/754122 |
| 19 | 223/754122 |
| | 155/754136 |
| 20 | 144/754136 |
| | 3/1066057 |
| 21 | 2/1066057 |
| | 257/754106 |
| | 340/754106 |
| | 143/754106 |
| | 144/754106 |
| | 338/754106 |
| 22 | 361/754106 |
| | 295/754106 |
| | 357/754106 |
| | 337/754106 |
| | 58/754099 |
| | 59/754099 |
| | 103/754099 |
| | 104/754099 |
| | 92/754099 |
| | 105/754099 |
| 48/754099 | |
| 23 | 209/754122 |
| | 339/754106 |
| | 341/754106 |
| 23 | 32/754122 |
| | 70/754102 |
| 24 | 71/754102 |
| | 134/754102 |
| 24 | 214/754145 |
| 25 | 79/754136 |
| | 163/754136 |

| Landowner | Lot/DP |
|-----------|------------|
| | 126/754136 |
| 26 | 228/754122 |
| | 80/754099 |
| | 132/754099 |
| | 75/754099 |
| | 130/754099 |
| | 108/754099 |
| | 101/754099 |
| | 131/754099 |
| | E/418849 |
| | 63/754099 |
| | 1/746015 |
| | 129/754099 |
| | 115/754099 |
| | 102/754099 |
| | 27 |
| 28 | 240/754145 |
| | 2/705655 |
| 29 | 78/754102 |
| | 1/211320 |
| | 175/754102 |
| | 30/754102 |
| | 202/754102 |
| | 31/754102 |
| | 60/754102 |
| | 50/754102 |
| | 54/754102 |
| | 64/754102 |
| | 176/754102 |
| | 55/754102 |
| | 120/754102 |
| 30 | 11/754102 |
| | 177/754102 |
| | 79/754102 |
| 31 | 161/754136 |
| 32 | 158/754136 |
| 33 | 128/754136 |
| | 80/754136 |
| | 129/754136 |
| 34 | 181/754102 |
| | 182/754102 |

| Landowner | Lot/DP |
|-----------|------------|
| | 132/754102 |
| | 80/754102 |
| | 133/754102 |
| 35 | 242/754145 |
| 36 | 143/754136 |
| 37 | D/440134 |
| 38 | 150/754136 |
| 39 | 1/222985 |
| 40 | 140/754136 |
| | 157/754136 |
| | 71/754136 |
| 41 | 114/754136 |
| | 113/754136 |
| 42 | B/439287 |
| | 239/754145 |
| | 4/1186361 |
| 43 | N/439287 |
| | 250/754145 |

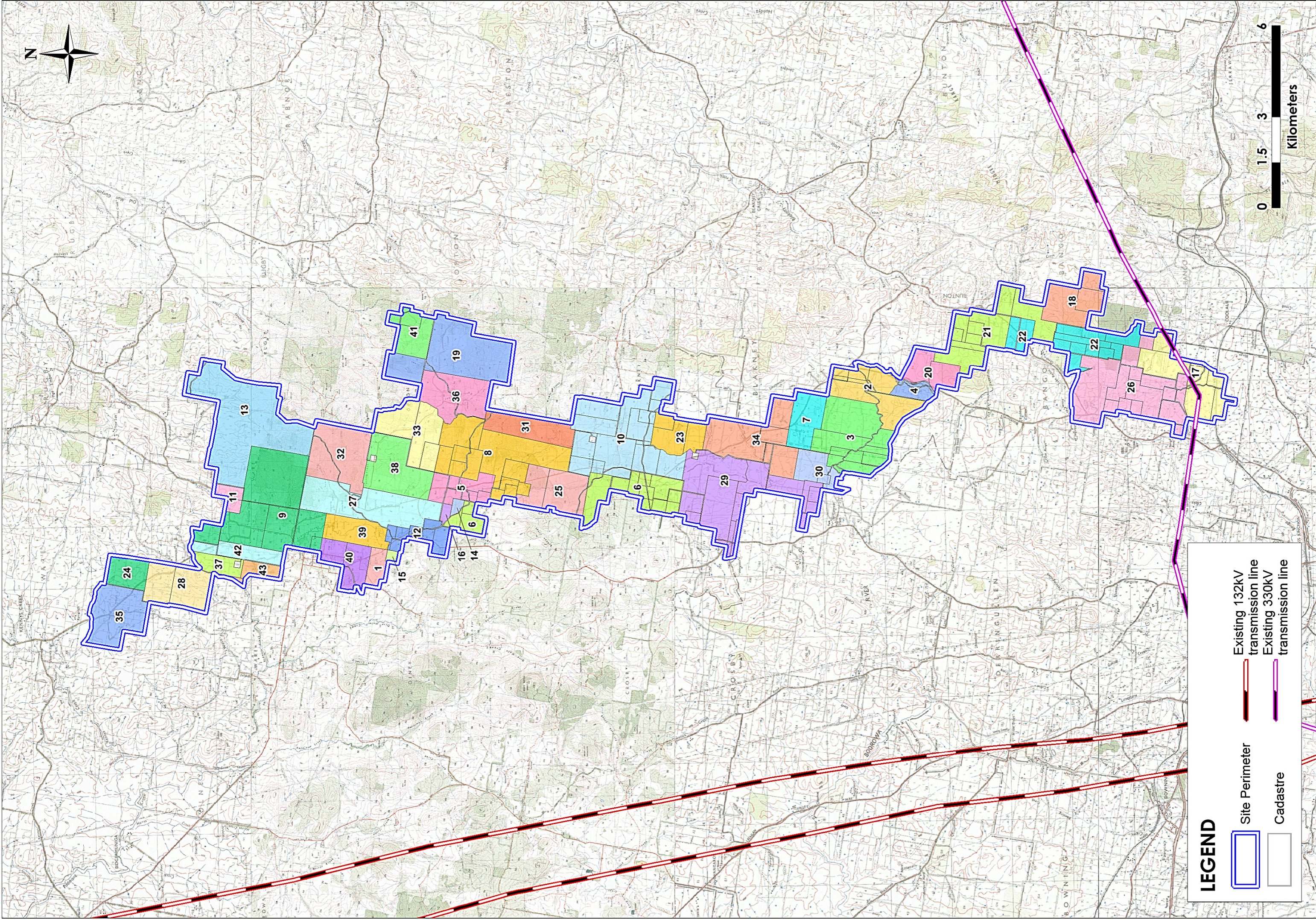
Land parcels that are within the site boundary yet not included in the project are below:

| Landowner | Lot/DP |
|-------------------------|--------------|
| Crown Land | 7001/1026328 |
| Crown Land | 7301/1147658 |
| Crown Land | 7001/1033069 |
| Crown Land | 7002/1033069 |
| Crown Land | 7001/1026213 |
| Telstra Corporation Ltd | 1/601586 |



0 1.5 3 6

Kilometers



LEGEND



Site Perimeter



Existing 132kV
transmission line



Existing 330kV
transmission line



Cadastre