

**Details for CCC meeting No 1**

**Venue:** Memorial Hall

**Address:** Yass

**Date:** Friday 1<sup>st</sup> March 2013

**Time:** 2pm to 3:30pm

# EPURON

**Yass Valley Wind Farm &  
Conroys Gap Wind Farm  
Community Consultation Committee  
Meeting No 1  
1 March 2013**

## Meeting Agenda

1. **Epuron**
  - About us
2. **Conroys Gap Wind Farm**
  - Project overview and current development status
3. **Yass Valley Wind Farm**
  - Project overview and current development status
4. **Draft NSW Wind Farm Planning Guidelines**
  - Overview of Guidelines and current position
5. **Community Consultation Committee**
  - Purpose, objectives and general proceedings
6. **Next Meeting**

## Epuron – Background and History

- Founded 2003
- ~16 staff based in North Sydney
- 100% Australian-owned company
- In-house expertise in wind development; planning; grid; wind modelling; GIS; wind monitoring; instrumentation; solar PV design and construction
- Extensive wind monitoring network (>50 masts)

### Track record of NSW wind farm developments

Cullerin Range	Sold to Origin: Operating	30MW
Conroys Gap	Approved	30MW
Gullen Range	Sold to Goldwind: Construction	73 turbines
Yass Valley	Seeking Approval	148 turbines
Silverton	Sold to AGL	
	Stage 1 Approved	<430MW
	Stage 2 Concept Approved	600+MW
White Rock	Approved	119 turbines
Rye Park	Seeking Approval	126 turbines
Liverpool Range	Seeking approval	417 turbines
Other	>10 sites under development	



*30MW Cullerin Range Wind Farm (Goulburn, NSW)*

- Developed by Epuron
- Constructed by Origin Energy in 2008/09
- Peak workforce of 100, 60 from local area
- 15 x REpower turbines = 30MW
  - net yield 47% Jul to Dec 2009 – in top 3 wind sites in Australia
  - Highest yielding wind farm in National Electricity Market, 2010
- Community fund established

## Epuron - Key Markets

- Large-scale wind (“Utility scale”)
  - 80-120 wind turbines, 150-360MW
  - power for 60,000 - 210,000 homes
  - investment \$350-\$750M each
  
- Small-scale wind (“Community scale”)
  - 7-15 wind turbines, 15-30MW
  - power for 8,000 -17,000 homes
  - investment \$30-\$60M each
  
- Solar photovoltaics (PV)
  - 1-10 megawatts off-grid (diesel grid)
    - e.g. TKLN Solar, 1MW supplying 3 remote communities in the NT
  - investment \$5-\$25M each



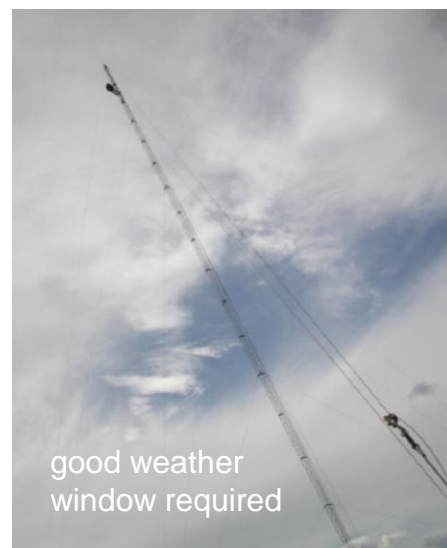
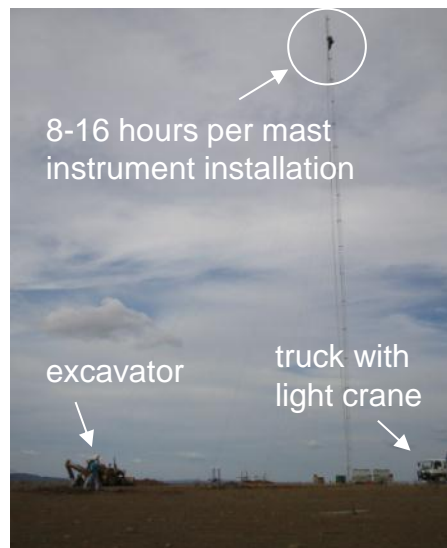
Eden Wind Farm - Photomontage



TKLN Solar Project Northern Territory

## Epuron – Wind Monitoring Technology

### Conventional approach – Met-mast



### New approach – SODAR Fulcrum 3D

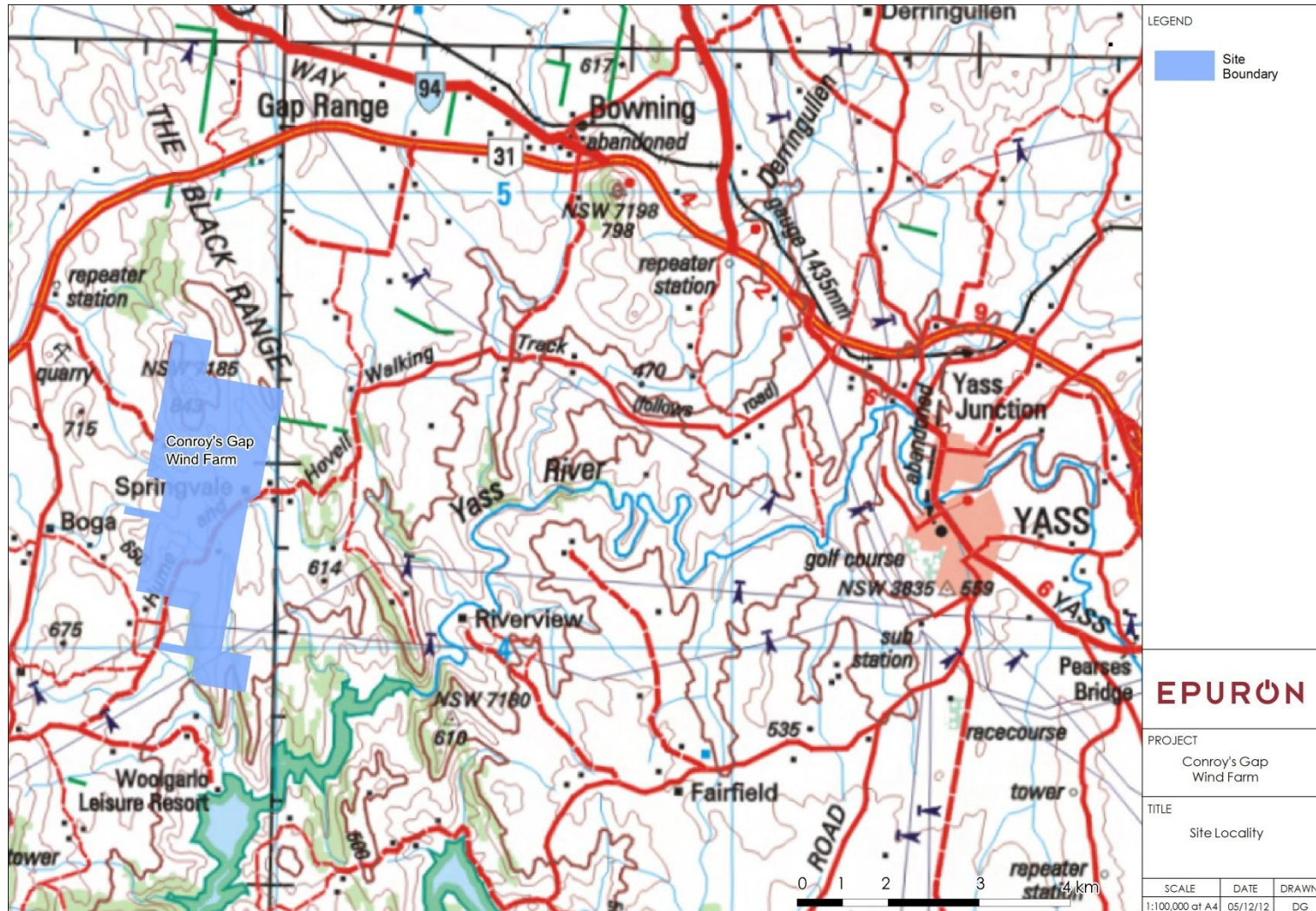


- ▶ Australian designed and built SODAR
- ▶ Range to 150m in 10m height bins
- ▶ Full3D wind data analysis
- ▶ Can be towed by any car (~350kg)
- ▶ Tow to site; level; switch on
- ▶ No weather delays

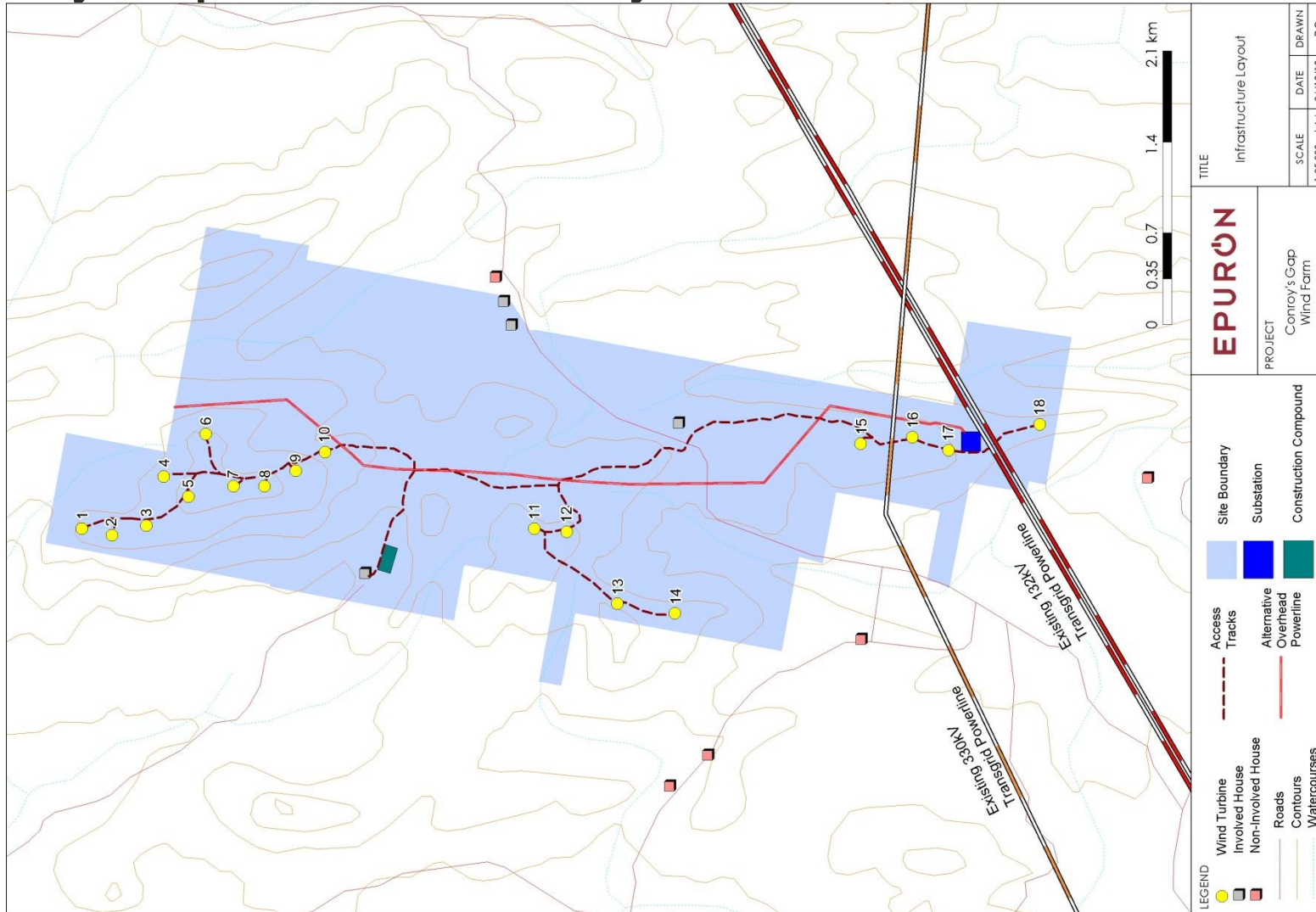
## Conroys Gap Wind Farm – Project Overview

- Project located on freehold rural land approximately 17km west of Yass
- 15 wind turbines and total capacity of 30MW
- Project approval granted in 2007
- Grid connection to existing Transgrid 132kV transmission line at southern end of site
- Orders placed for wind turbines
- TransGrid feasibility study expected March 2013
- Detailed grid studies to be completed by June 2013
- Currently investigating feasibility of a modification application to increase the number of turbines to 18 and capacity of 37MW
- Further project details at [www.epuron.com.au/project/conroys-gap/downloads/](http://www.epuron.com.au/project/conroys-gap/downloads/)

# Conroys Gap Wind Farm Location



## Conroys Gap Wind Farm Site Layout

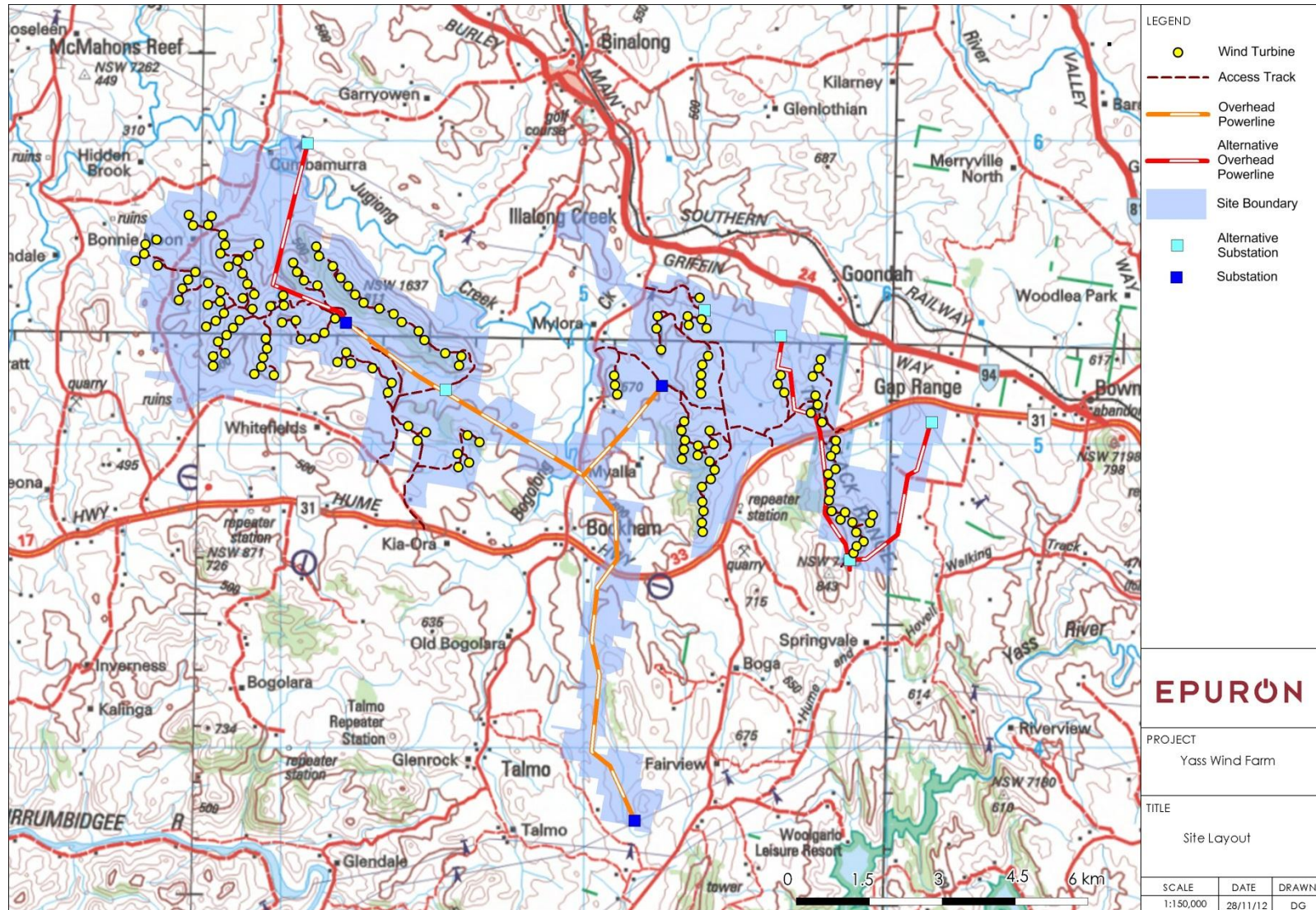




## Yass Valley Wind Farm – Project Overview

- Project located approximately 25km west of Yass
- Up to 148 wind turbines
- Development Application and Environmental Assessment lodged in November 2009
- Preferred Project Report addressing submissions raised & identifies changes made to infrastructure layout lodged in November 2012
- TransGrid grid connection studies in progress
- Planning determination anticipated in 2<sup>nd</sup> quarter 2013
- Further project details available at website <http://www.epuron.com.au/project/yass-valley/downloads/>

## Yass Valley Wind Farm Site Layout



## Draft NSW Wind Farm Planning Guidelines – Overview

- Draft NSW Wind Farm Planning Guidelines exhibited 23 Dec 2011 to 14 Mar 2012
- Government intends finalising Guidelines early 2013 (still outstanding)
- Policy Statement released 18 April 2012 identifying interim arrangements for existing State Significant Developments and transitional Part 3a wind farms
- The transitional arrangements vary depending on the stage of an application in the assessment and determination process

Stage 1 - New applications for which DGRs have been issued

Stage 2- Applications for which DGRs have been issued but are yet to be exhibited

Stage 3 - Applications that have been exhibited but not yet determined ← YVWF

Stage 4 - Applications that have been approved ← CGWF

## Draft NSW Wind Farm Planning Guidelines – Stage 3 Transitional Arrangements

### 3. *Applications that have been exhibited but not yet determined*

Proponents are encouraged to adopt relevant provisions of the guidelines in the assessment, operation and construction of projects.

- It is recommended that proponents consider relevant provisions of the guidelines when responding to issues raised in submissions particularly in relation to noise, decommissioning and compliance provisions.
- It is strongly recommended that proponents, if not done so already, immediately establish a Community Consultation Committee to provide for ongoing communication with the local community. Appendix C of the guidelines provides guidance on the establishment, membership and operation of the committee. The Department will assist proponents with the appointment of an independent committee chair and in the selection of members.
- The Department will consider relevant provisions of the guidelines in developing conditions of consent where applications are recommended for approval.

## Draft NSW Wind Farm Planning Guidelines – Stage 4 Transitional Arrangements

### 4. *Applications that have been approved*

Proponents are encouraged to adopt relevant provisions of the guidelines in the operation and construction of projects.

- It is recommended that proponents consider relevant provisions of the draft guidelines in relation to noise management, decommissioning, monitoring and performance compliance in the construction and operation of the project.
- It is strongly recommended that proponents, if not done so already, immediately establish a Community Consultation Committee to provide for ongoing communication with the local community. Appendix C of the draft guidelines provides guidance on the establishment, membership and operation of the committee. The Department will assist proponents with the appointment of an independent committee chair and in the selection of members.

## Community Consultation Committee - Purpose and Objectives

- To enable Epuron to formally provide the local community with information about the proposal;
- To enable the community to express and for Epuron to understand any concerns regarding the potential impacts of the proposal;
- To enable Epuron to consider whether and how to incorporate any suggestions and feedback into the design of the proposal;
- To demonstrate how and where feedback has been incorporated and resulted in amendments to the proposal;
- To formally advise potential community benefits that can be integrated into the proposal; and,
- To establish and strengthen good working relationships between the proponent and the local community.

## Community Consultation Committee – General Proceedings

- The Chairperson to set the agenda and convene and chair meetings
- The committee is not a decision-making body and it is not a requirement that consensus be reached on issues discussed
- Meeting proceedings should generally include;
  - Apologies
  - Declaration of pecuniary or other interests
  - Confirmation of the previous meeting minutes
  - Business arising from previous minutes
  - Correspondence
  - Proponent reports and overview of development activities
  - General business
  - Next meeting
- Minutes are to be kept of all meetings by the proponent
- Committee to determine frequency of meetings – suggest every 3 – 4 months
- Meetings to be held at a convenient location – suggest local venue

## Consultation – Communication and Feedback

- Consultation is a two-way-street and we're always listening
- Feedback and suggestions are important to us
- Available communication channels include;
  - Epuron corporate website: [www.epuron.com.au](http://www.epuron.com.au)
  - Conroys Gap project website: [www.conroysgapwindfarm.com.au](http://www.conroysgapwindfarm.com.au)
  - Yass Valley project website: [www.epuron.com.au/project/yass-valley](http://www.epuron.com.au/project/yass-valley)
  - Mailing address: Level 11, 75 Miller Street  
North Sydney...NSW...2060
  - Phone: 02 8456 7400
  - Fax: 02 9922 6645
  - Email: [info@epuron.com.au](mailto:info@epuron.com.au)
  - Project Manager: Andrew Wilson  
[a.wilson@epuron.com.au](mailto:a.wilson@epuron.com.au)
  - Meetings Arranged by appointment



## Other Reference Documents

- NSW Draft Wind Farm Planning Guidelines - December 2011
- NHMRC (National Health & Medical Research Council) Review of Wind Turbines & Health - July 2010
- NSW Valuer General - Impact of Wind Farms on Property Values – August 2009
- DECCW (NSW Department of Environment, Climate Change & Water - Community Survey: “Community Attitudes to Wind Farms” – December 2010
- Clean Energy Council - Wind Farm Investment, Employment and Carbon Abatement in Australia (SKM) – June 2012
- EPA South Australia – January 2013 Wind Farms and Infrasound
- NSW Farmers Association - A guideline for host landholders January 2013

## Thank You



**EPURON Pty Ltd**

75 Miller Street  
North Sydney  
NSW 2060  
AUSTRALIA

[www.epuron.com.au](http://www.epuron.com.au)

T +612 8456 7400  
F +612 9922 6645

