

Draft Wind Farm Guidelines

A few residents have questioned whether the approval of residents within 2kms of a wind turbine is required for the Yass Valley Wind Farm to proceed through planning. This is not a requirement. Under the 'Draft NSW Planning Guidelines: Wind Farms' consultation with neighbours with a residence within 2km and an initial high level assessment of impacts is required to progress to the issuing of Director General's Requirements (DGRs). The DGRs for Yass Valley Wind Farm were issued in January 2009.

The Draft Guidelines note:

"A Gateway for an increased level of initial assessment of the proposed development applies if the applicant does not receive written consent from landowners with residences within 2km of proposed turbines. This approach has been designed to provide for increased consultation with relevant landowners by the applicants **before the proposal proceeds through the assessment process.**" Yass Valley Wind Farm went on public exhibition prior to the exhibition of the Draft Wind Farm Guidelines. However, while the wind farm predates the guidelines, as we proceed through the final stages of the project, Epuron is reviewing the layout of the wind turbines and considering information provided through consultation in light of the guidelines to ensure that impacts are minimised wherever possible. Further information on the Draft Guidelines can be found at

<http://www.planning.nsw.gov.au/>

Community Consultation Committee

The Yass Valley and Conroy's Gap wind farms Community Consultation Committee (CCC) has met three times this year and will meet again in July at the Yass Council offices.

Minutes of the meetings are available at

www.epuron.com.au/project/yass-valley/downloads/

The committee members are:

- | | |
|--------------------------|--------------------------|
| • Independent Chair | Nic Carmody |
| • Harden Shire Council | Councillor Neil Reid |
| • Yass Valley Council | Councillor David Needham |
| • Non-involved landowner | John McGrath |
| • Non-involved landowner | Paul Regan |
| • Non-involved landowner | Rowena Weir |
| • Non-involved landowner | Mark Glover |
| • Bookham Ag Bureau | Sam Weir |
| • Involved landowner | Stan Waldren |
| • Epuron | Andrew Wilson |
| • Epuron | Donna Bolton |
| • Precinct Co-ordinator | Dieuwer Reynders |

The CCC welcomes suggestions and questions from the community which can be addressed to the Independent Chair directly or via a CCC member.

Wind Farms, Sound & Health



A report released by the Victorian Department of Health in April this year has found that the inaudible sound caused by wind farms, known as infrasound, does not affect human health.


The report assessed the evidence and found it does not support claims that inaudible sounds can have direct physiological effects.

The report says infrasound is generated by many sources, such as trains, breaking waves and air conditioners. The Department found the evidence showed wind farms produced no more infrasound than the background level in other environments.



A copy of the report can be found on the departments website at www.health.vic.gov.au/.

Please send us your feedback

Write to us:

 Epuron
Level 11, 75 Miller Street
North Sydney NSW 2060

Email or Phone:

 a.wilson@epuron.com.au
www.epuron.com.au
 02 8456 7400

Yass Valley and Conroy's Gap Wind Farms

Status of the projects:

Yass Valley Wind Farm

The Yass Valley Wind Farm site is located 25km west of Yass and consists of up to 147 turbine locations across two precincts, Coppabella and Marilba. The Environmental Assessment (EA) went on public exhibition in November 2009. Shortly after this Origin Energy acquired the project from Epuron. Twenty two submissions were received in response to the exhibition of the EA, seven of which were from government agencies.

In mid 2012 Epuron acquired the project back from Origin Energy and set up a Community Consultation Committee. In November 2012 Epuron lodged the Preferred Project Report which responded to submissions and was exhibited from 14 December to 1 March 2013. Epuron is currently in the process of responding to the fifteen submissions received to the Preferred Project Report. Consultation is ongoing with the community.

Conroy's Gap Wind Farm

Conroy's Gap Wind Farm received planning approval in May 2007. The site is located to the south of the Hume Highway and adjacent to the proposed Yass Valley Wind Farm. The project was developed by Epuron and along with Cullerin Range Wind Farm was acquired by Origin Energy in November 2007. Epuron has since resumed ownership of the proposed project and entered into a contract for the supply of wind turbines for the site in mid 2012. The approved project enables 15 wind turbines to be built on any of 18 approved locations on the site to a maximum of 30MW. With increases in the efficiency of wind turbines Epuron is now seeking a modification to enable wind turbines to be located on all of the 18 approved locations. This will bring the total capacity of the wind farm from 30MW to 36.9MW.

Ongoing consultation

Epuron's consultation with stakeholders is continuing with both wind farm sites including through meetings, newsletters, media articles, the website and direct correspondence.

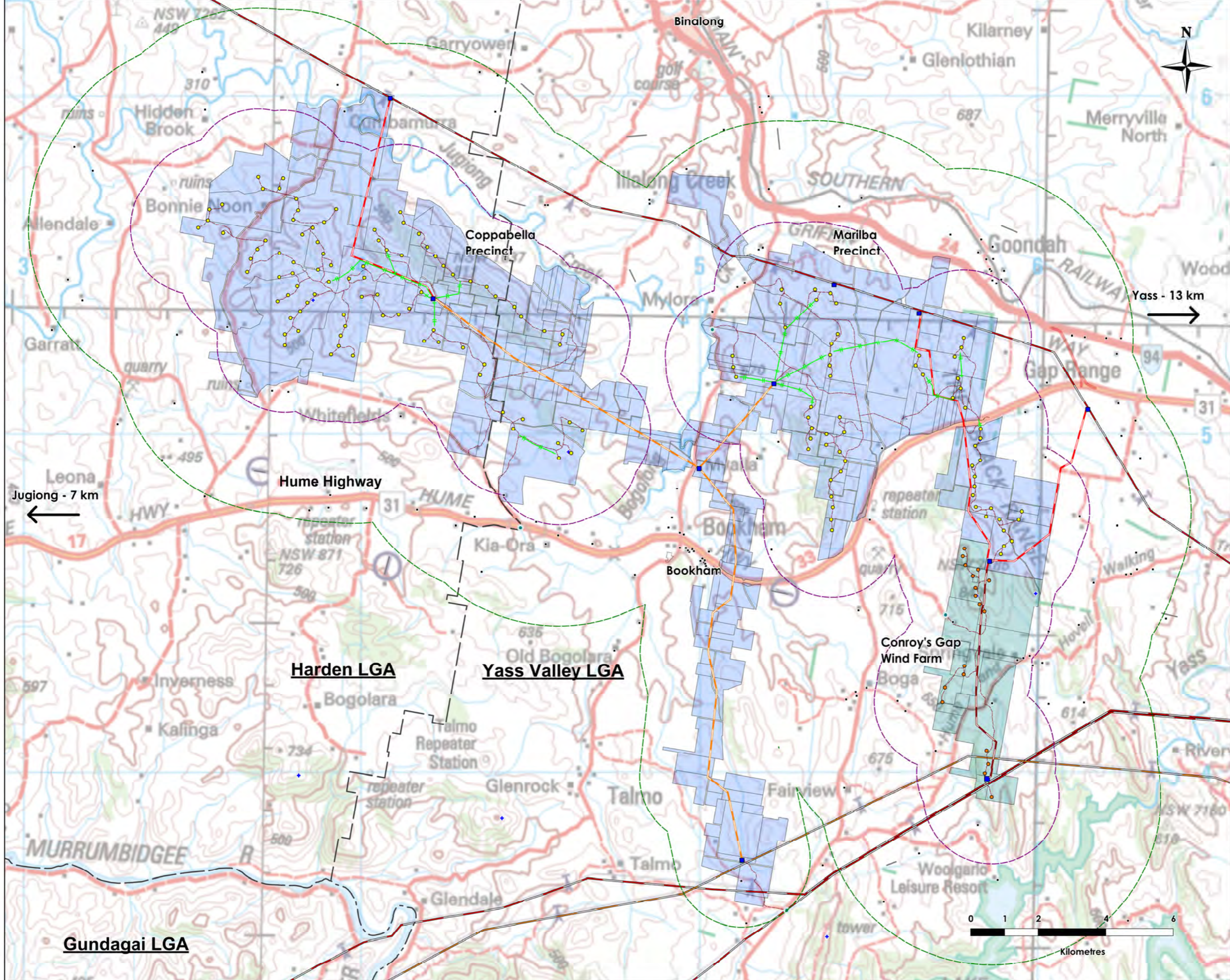
Wind farm access roads aid firefighters



During recent grass fires in South Australia, started by lightning, the benefit brought by the access roads built for a local wind farm was revealed.

"They were absolutely of great benefit in helping us fight the fires," said the Snowtown Country Fire Service (CFS) Captain. "If it weren't for the those roads the fires, which were going at a fair rate of knots, would have just kept going. "They acted as a natural fire break, giving us an edge to work to enable us to back burn if we needed to. These new access roads provided an unexpected bonus, but they'll help us control fires in the future."

The NSW Rural Fire Service Aviation Section deals with large numbers of obstacles in the landscape when fighting fires. They view wind turbines like any other obstacles in the terrain and work around them to fight fires.



- LEGEND
- Yass Valley project site
 - Conroy's Gap project site
 - Yass Valley wind turbine
 - Conroy's Gap wind turbine
 - 2 km turbine buffer
 - 5 km turbine buffer
 - Yass Valley overhead powerline
 - Alternative overhead powerline
 - Conroy's Gap overhead powerline
 - Overhead reticulation
 - Substation location
 - Access track
 - Site access point
 - + Wind monitoring mast
 - Airstrip
 - Local Government Area boundaries
 - Existing 132kV transmission line
 - Existing 330kV transmission line

Base map created using Geoscience Australia NATMAP Digital Maps 250K (2008)

EPURON

Ph: (02) 8456 7400
Email: info@epuron.com.au

PROJECT
Yass Valley Wind Farm (Seeking Approval) & Conroy's Gap Wind Farm (Approved)

TITLE
Project Layout

SCALE	DATE	DRAWN
1:50,000 at A1	24/05/13	MK