

## FAUNA CONSTRAINTS MAP 2

### Rye Park Wind Farm Biodiversity Assessment

Site perimeter	Substation	Reason Dense area of HBTs	Moderate constraint
Development envelope	Termination compound	Reason GSM habitat 200m buffer	Reason Potential GSM habitat
Infrastructure	O&M building	Reason Nest tree 100m buffer	Reason High number of threatened species
Turbine location	Construction compound	Reason SLL habitat 500m buffer	Reason Turbine(s) surrounded by patchy good condition woodland/forest
Access track	Concrete batching plant	Reason Superb Parrot/Painted Honey Eater corridor and SP nest trees	
Underground cabling	Fauna constraints	Reason Turbine(s) on edge of continuous good quality woodland/forest	
Overhead transmission line	High constraint		

Note: Other areas not mapped within the development envelope are considered low constraint

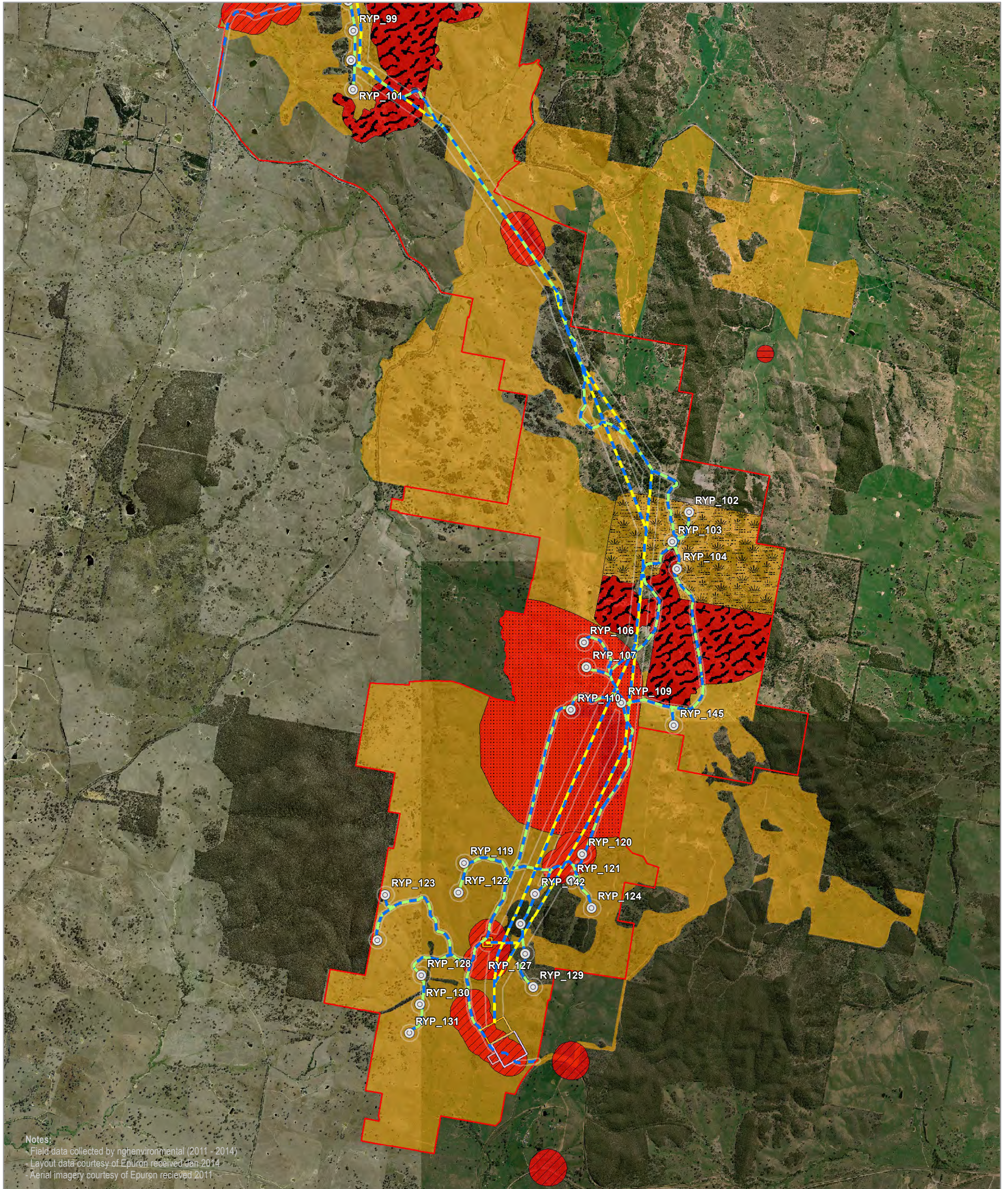
0 0.5 1 Kilometres

A3 @ 1:42000  
Ref: 5439 - 9  
Author: DM

ngh environmental

www.nghenvironmental.com.au





Notes  
 Field data collected by nghenvironmental (2011 - 2014)  
 Layout data courtesy of Epuron received Jan 2014  
 Aerial imagery courtesy of Epuron received 2011

**FAUNA CONSTRAINTS MAP 3**

**Rye Park Wind Farm Biodiversity Assessment**

- |                            |                         |   |  |
|----------------------------|-------------------------|---|--|
| Site perimeter             | Substation              | Reason  | Moderate constraint  |
| Development envelope       | Termination compound    | Dense area of HBTs  | Reason   |
| Infrastructure             | O&M building            | GSM habitat 200m buffer                                       | Potential GSM habitat  |
| Turbine location           | Construction compound   | Nest tree 100m buffer   | High number of threatened species                              |
| Access track               | Concrete batching plant | SLL habitat 500m buffer                                       | Turbine(s) surrounded by patchy good condition woodland/forest |
| Underground cabling        | Fauna constraints       | Superb Parrot/Painted Honey Eater corridor and SP nest trees  |  |
| Overhead transmission line | High constraint         | Turbine(s) on edge of continuous good quality woodland/forest |  |
- Note: Other areas not mapped within the development envelope are considered low constraint

0 0.5 1 Kilometres

A3 @ 1:42000  
 Ref: 5439 - 9  
 Author: DM

www.nghenvironmental.com.au