

FLORA CONSTRAINTS MAP 1

Rye Park Wind Farm Biodiversity Assessment

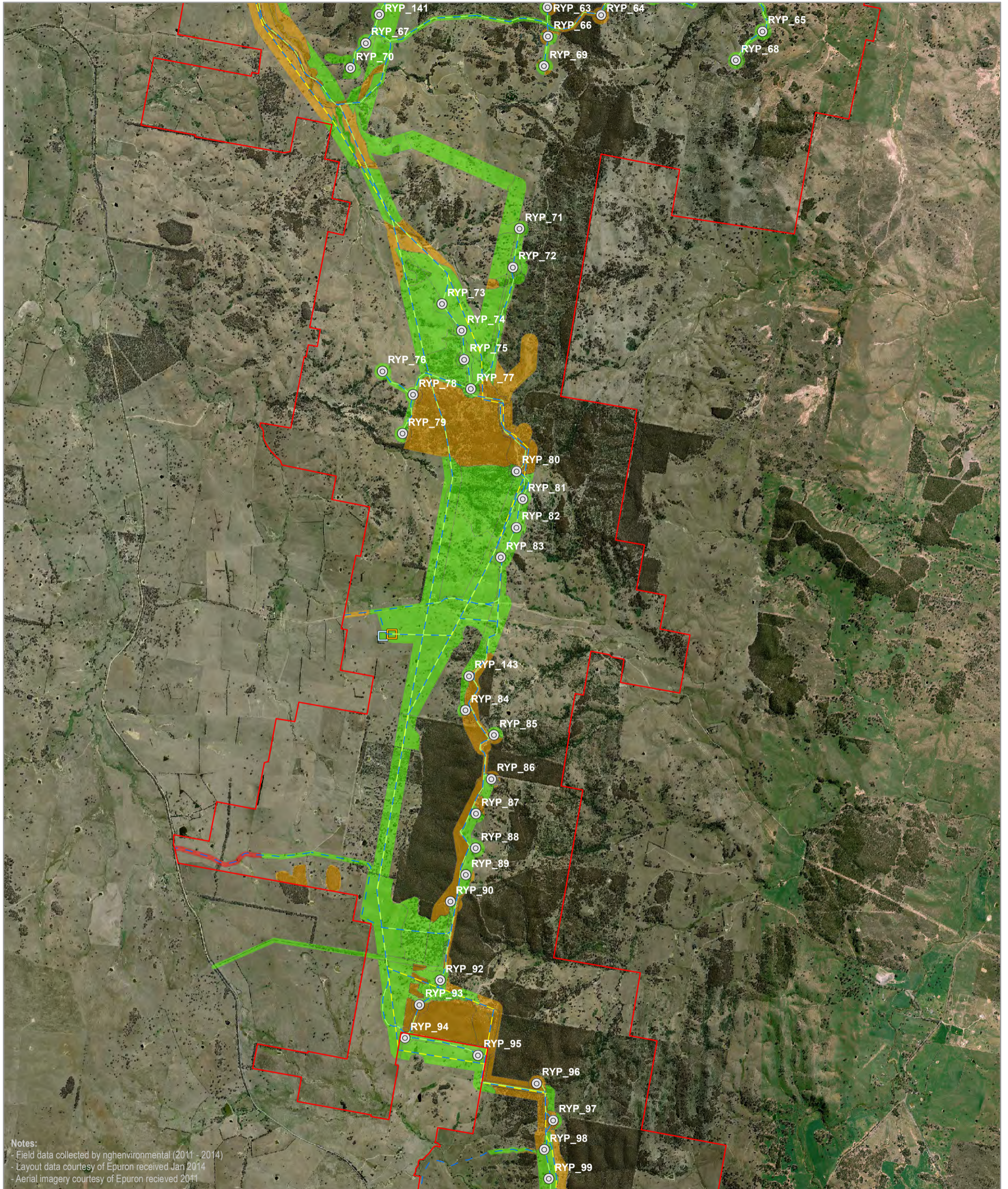
- | | | |
|------------------------------|---------------------------|---------------|
| □ Site perimeter | □ Substation | ■ Constraints |
| — Infrastructure | □ Termination compound | ■ High |
| ⊙ Turbine location | □ O&M building | ■ Moderate |
| — Access track | □ Construction compound | ■ Low |
| — Underground cabling | □ Concrete batching plant | |
| — Overhead transmission line | | |

0 0.5 1 Kilometres

A3 @ 1:42000
 Ref: 5439 - 1
 Author: DM

ngh environmental

www.nghenvironmental.com.au



FLORA CONSTRAINTS MAP 2

Rye Park Wind Farm Biodiversity Assessment

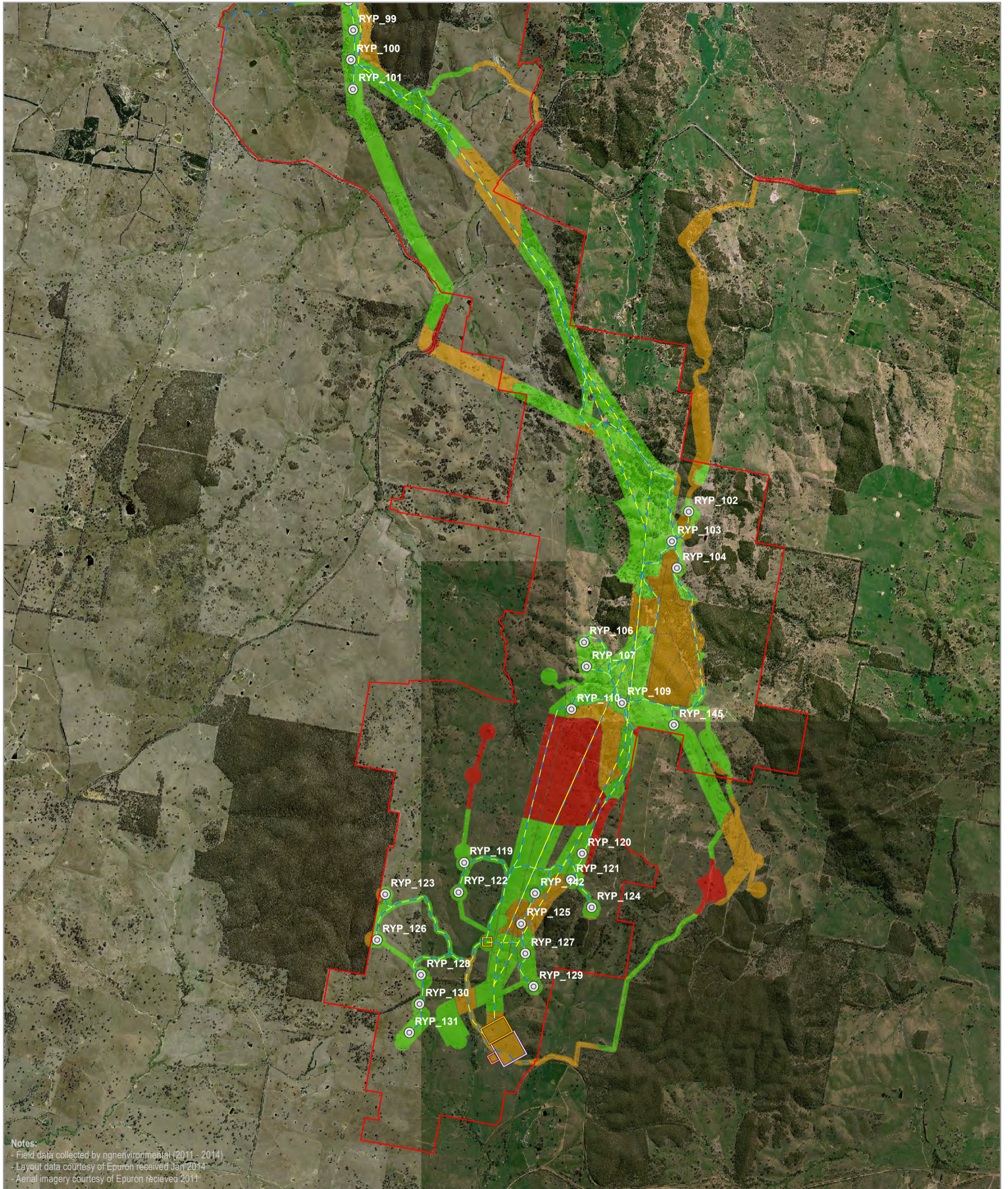
- | | | |
|------------------------------|---------------------------|-------------|
| □ Site perimeter | □ Substation | Constraints |
| Infrastructure | □ Termination compound | ■ High |
| ⊙ Turbine location | □ O&M building | ■ Moderate |
| - Access track | □ Construction compound | ■ Low |
| - Underground cabling | □ Concrete batching plant | |
| - Overhead transmission line | | |

0 0.5 1 Kilometres

A3 @ 1:42000
 Ref: 5439 - 1
 Author: DM

ngh environmental

www.nghenvironmental.com.au



FLORA CONSTRAINTS MAP 3

Rye Park Wind Farm Biodiversity Assessment

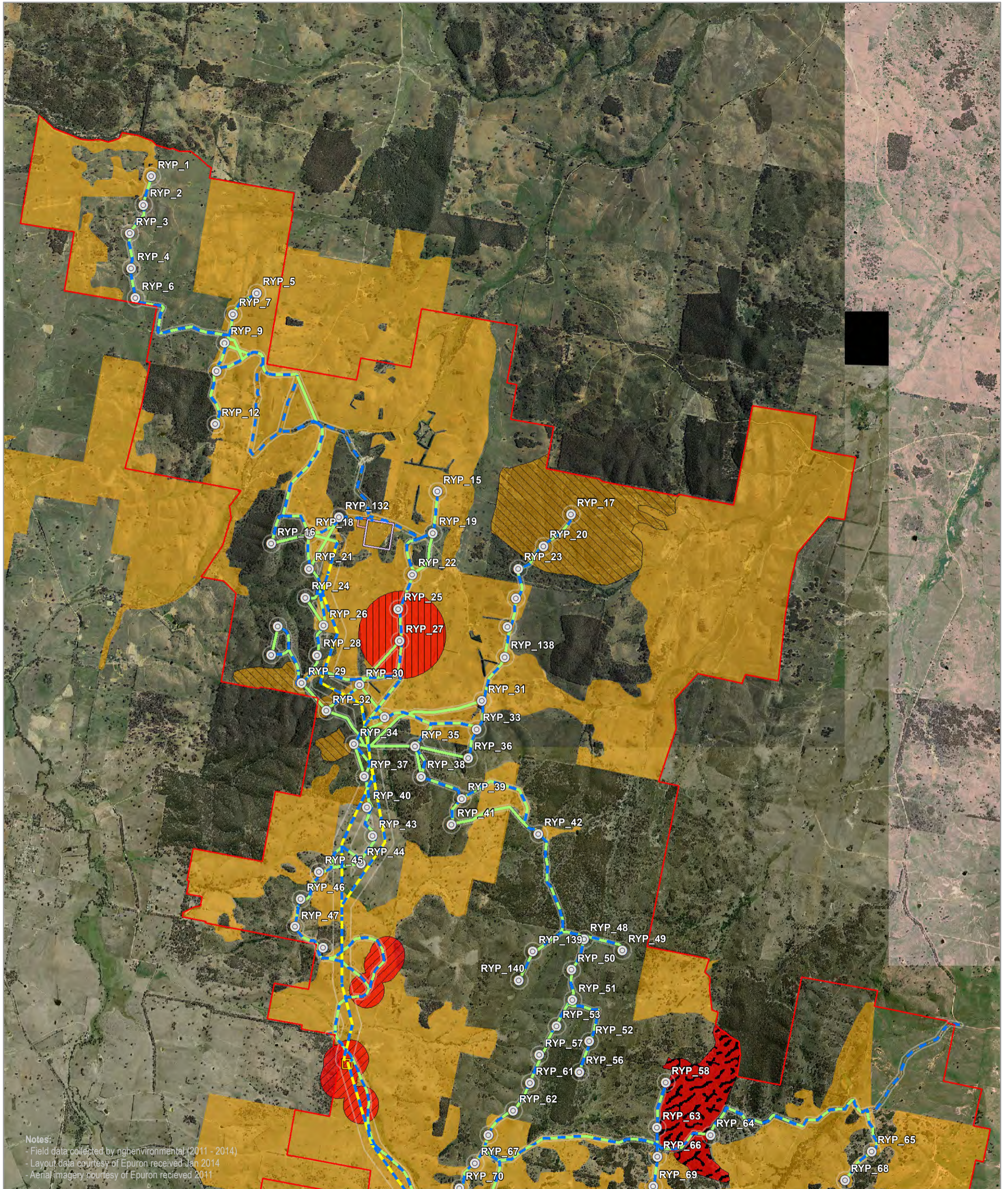
- | | | |
|------------------------------|---------------------------|-------------|
| □ Site perimeter | □ Substation | Constraints |
| Infrastructure | □ Termination compound | ■ High |
| ⊙ Turbine location | □ O&M building | ■ Moderate |
| — Access track | □ Construction compound | ■ Low |
| — Underground cabling | □ Concrete batching plant | |
| — Overhead transmission line | | |

0 0.5 1 Kilometres

A3 @ 1:42000
Ref: 5439 - 1
Author: DM

ngh environmental

www.nghenvironmental.com.au



Notes:
 - Field data collected by nghenvironmental (2011 - 2014)
 - Layout data courtesy of Epuron received Jan 2014
 - Aerial imagery courtesy of Epuron received 2011

FAUNA CONSTRAINTS MAP 1

Rye Park Wind Farm Biodiversity Assessment

- | | | | |
|---|--|--|---|
| <ul style="list-style-type: none"> □ Site perimeter □ Development envelope Infrastructure ⊙ Turbine location - Access track - Underground cabling - Overhead transmission line | <ul style="list-style-type: none"> □ Substation □ Termination compound □ O&M building □ Construction compound □ Concrete batching plant Fauna constraints ■ High constraint | <ul style="list-style-type: none"> Reason ▨ Dense area of HBTs ▨ GSM habitat 200m buffer ▨ Nest tree 100m buffer ▨ SLL habitat 500m buffer ▨ Superb Parrot/Painted Honey Eater corridor and SP nest trees ▨ Turbine(s) on edge of continuous good quality woodland/forest | <ul style="list-style-type: none"> ■ Moderate constraint Reason □ Potential GSM habitat ▨ High number of threatened species ▨ Turbine(s) surrounded by patchy good condition woodland/forest |
|---|--|--|---|
- Note: Other areas not mapped within the development envelope are considered low constraint

0 0.5 1 Kilometres

A3 @ 1:42000
 Ref: 5439 - 9
 Author: DM

ngh environmental

www.nghenvironmental.com.au