

Notes:
 Field data collected by nghenvironmental (2011 - 2014)
 Layout data courtesy of Epuron (received Jan 2014)
 Aerial imagery courtesy of Epuron received 2011

FAUNA HOLLOW-BEARING TREE SURVEY RESULTS MAP 2

Rye Park Wind Farm Biodiversity Assessment

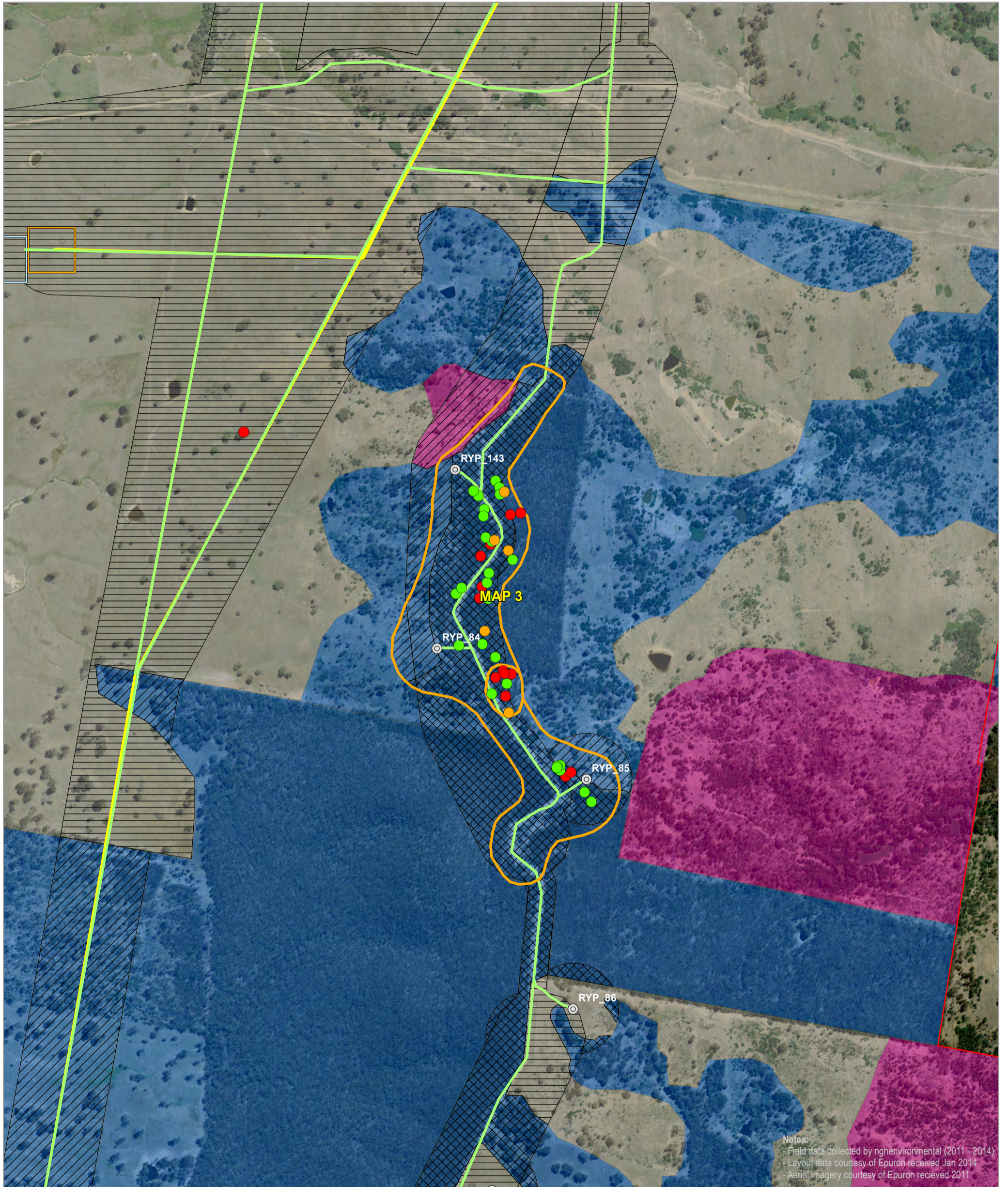
- | | | | | |
|---|--|---|--|---|
| <ul style="list-style-type: none"> □ Site perimeter Infrastructure ⊙ Turbine location — Access track — Underground cabling — Overhead transmission line | <ul style="list-style-type: none"> □ Substation □ Termination compound □ O&M building □ Construction compound □ Concrete batching plant | <ul style="list-style-type: none"> □ HBT survey areas □ Hollow-bearing trees - Quality ● High ● Medium ● Low | <ul style="list-style-type: none"> □ Vegetation condition □ Good □ Moderate □ Poor □ Vegetation type □ Argyle Apple Forest □ Box-Gum Woodland □ Brittle Gum Forest | <ul style="list-style-type: none"> □ Derived Grassland □ Exotic pasture □ Native pasture □ Phragmites within dam □ Planted native vegetation □ Red Box Woodland □ Scribbly Gum Forest □ Sifton Bush Shrubland |
|---|--|---|--|---|

0 150 300 Meters

A3 @ 1:20000
 Ref: 5439 - 4
 Author: DM

ngh environmental

www.nghenvironmental.com.au



Notes:
 - Field data collected by nghenvironmental (2011 - 2014)
 - Layout data courtesy of Epuron received Jan 2014
 - Aerial imagery courtesy of Epuron received 2011

FAUNA HOLLOW-BEARING TREE SURVEY RESULTS MAP 3

Rye Park Wind Farm Biodiversity Assessment

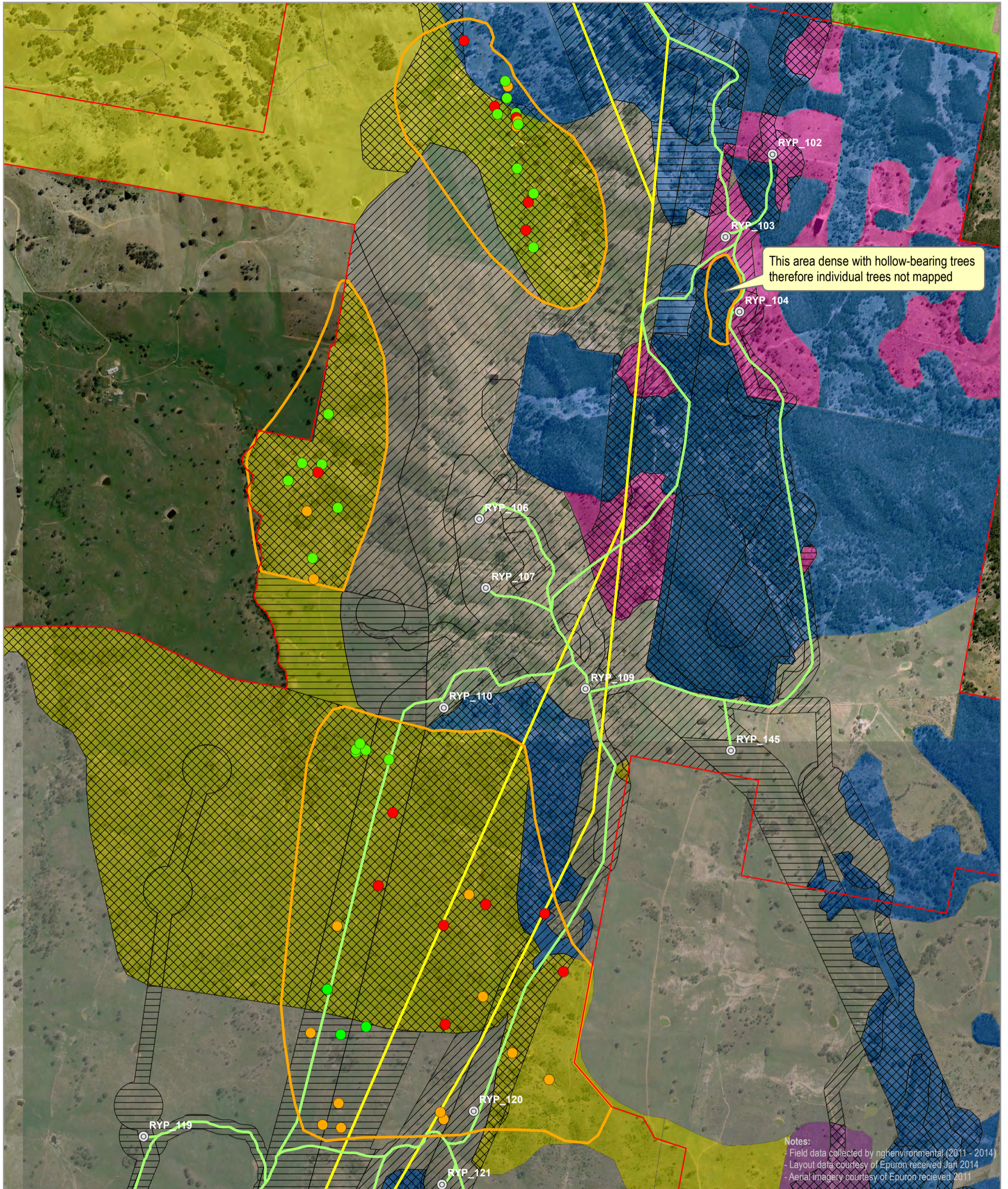
- | | | | | |
|---|--|---|--|---|
| <ul style="list-style-type: none"> □ Site perimeter □ Infrastructure ⊙ Turbine location - Access track - Underground cabling - Overhead transmission line | <ul style="list-style-type: none"> □ Substation □ Termination compound □ O&M building □ Construction compound □ Concrete batching plant | <ul style="list-style-type: none"> □ HBT survey areas □ Hollow-bearing trees - Quality ● High ● Medium ● Low | <ul style="list-style-type: none"> □ Vegetation condition □ Good □ Moderate □ Poor □ Vegetation type □ Argyle Apple Forest □ Box-Gum Woodland □ Brittle Gum Forest | <ul style="list-style-type: none"> □ Derived Grassland □ Exotic pasture □ Native pasture □ Phragmites within dam □ Planted native vegetation □ Red Box Woodland □ Scribbly Gum Forest □ Sifton Bush Shrubland |
|---|--|---|--|---|

0 150 300 Meters

A3 @ 1:8000
 Ref: 5439 - 4
 Author: DM

ngh environmental

www.nghenvironmental.com.au



FAUNA HOLLOW-BEARING TREE SURVEY RESULTS MAP 4

Rye Park Wind Farm Biodiversity Assessment

- | | | | | |
|---|--|---|--|---|
| <ul style="list-style-type: none"> Site perimeter Infrastructure Turbine location Access track Underground cabling Overhead transmission line | <ul style="list-style-type: none"> Substation Termination compound O&M building Construction compound Concrete batching plant | <ul style="list-style-type: none"> HBT survey areas Hollow-bearing trees - Quality High Medium Low | <ul style="list-style-type: none"> Vegetation condition Good Moderate Poor Vegetation type Argyle Apple Forest Box-Gum Woodland Brittle Gum Forest | <ul style="list-style-type: none"> Derived Grassland Exotic pasture Native pasture Phragmites within dam Planted native vegetation Red Box Woodland Scribbly Gum Forest Sifton Bush Shrubland |
|---|--|---|--|---|

Notes:
 - Field data collected by nghenvironmental (2011 - 2014)
 - Layout data courtesy of Epuron received Jan 2014
 - Aerial imagery courtesy of Epuron received 2011

0 150 300 Meters

A3 @ 1:15000
 Ref: 5439 - 4
 Author: DM

ngh environmental

www.nghenvironmental.com.au