

SUPERB PARROT SURVEY EFFORT AND RESULTS MAP 2

Rye Park Wind Farm Biodiversity Assessment

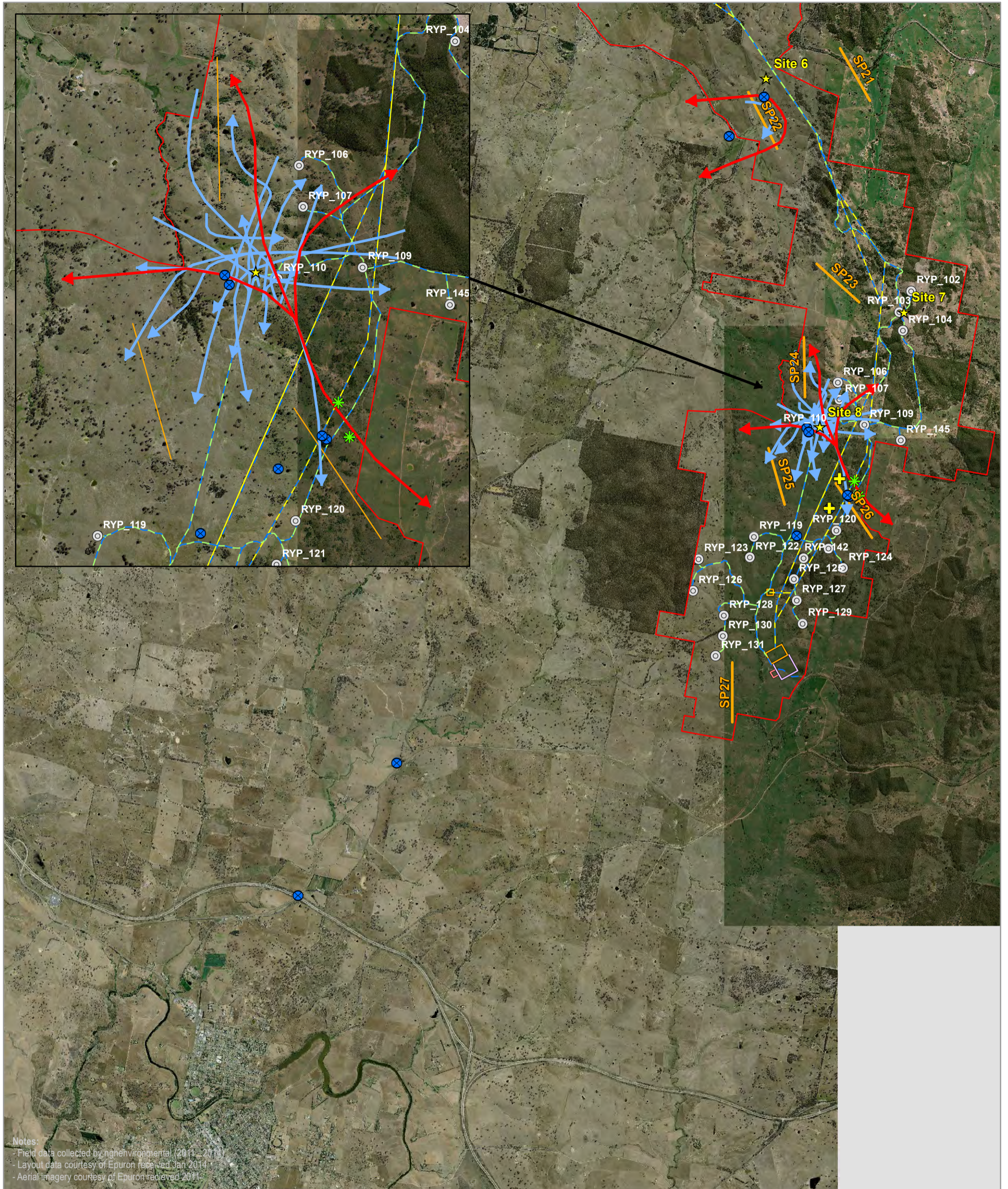
- | | | | |
|----------------------------|-------------------------|-----------------------------------|----------------------------|
| Site perimeter | Substation | Flight path viewing station | Primary movement corridors |
| Turbine location | Termination compound | Superb Parrot transect | Observed flight paths |
| Access track | O&M building | Superb Parrot observation | |
| Underground cabling | Construction compound | Superb Parrot nest | |
| Overhead transmission line | Concrete batching plant | Potential Superb Parrot nest tree | |

0 1 2 Kilometers

A3 @ 1:60000
 Ref: 5439 - 6
 Author: DM

ngh environmental

www.nghenvironmental.com.au



SUPERB PARROT SURVEY EFFORT AND RESULTS MAP 3

Rye Park Wind Farm Biodiversity Assessment

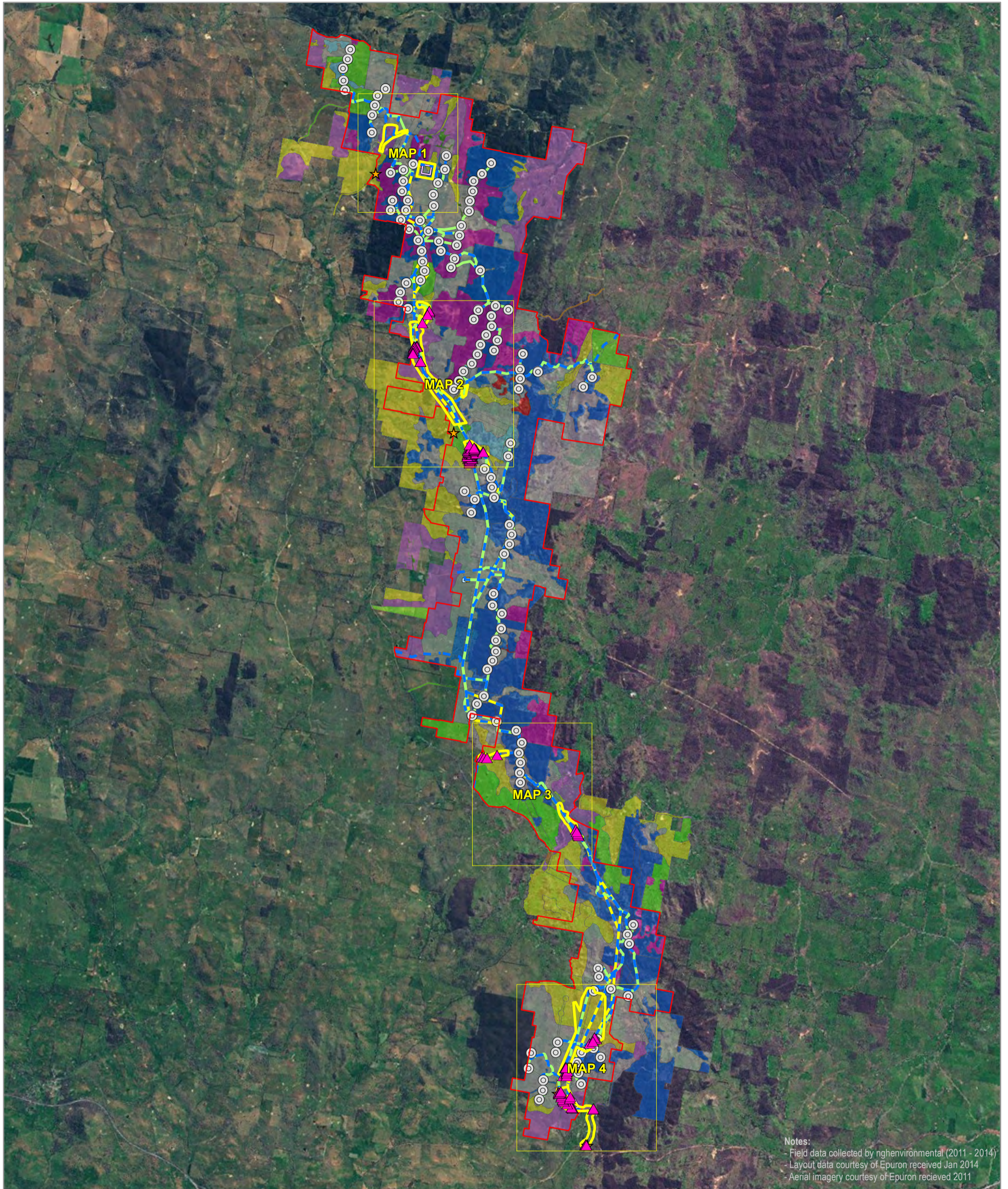
- | | | | |
|------------------------------|---------------------------|-------------------------------------|------------------------------|
| □ Site perimeter | □ Substation | ★ Flight path viewing station | ▶ Primary movement corridors |
| ⊙ Turbine location | □ Termination compound | — Superb Parrot transect | ▶ Observed flight paths |
| — Access track | □ O&M building | ⊗ Superb Parrot observation | |
| — Underground cabling | □ Construction compound | ✱ Superb Parrot nest | |
| — Overhead transmission line | □ Concrete batching plant | ✚ Potential Superb Parrot nest tree | |

0 1 2 Kilometers

A3 @ 1:60000
 Ref: 5439 - 6
 Author: DM

ngh environmental

www.nghenvironmental.com.au



Notes:
 - Field data collected by nghenvironmental (2011 - 2014)
 - Layout data courtesy of Epuron received Jan 2014
 - Aerial imagery courtesy of Epuron received 2011

GOLDEN SUN MOTH SURVEY EFFORT AND RESULTS INDEX TO MAPS

Rye Park Wind Farm Biodiversity Assessment

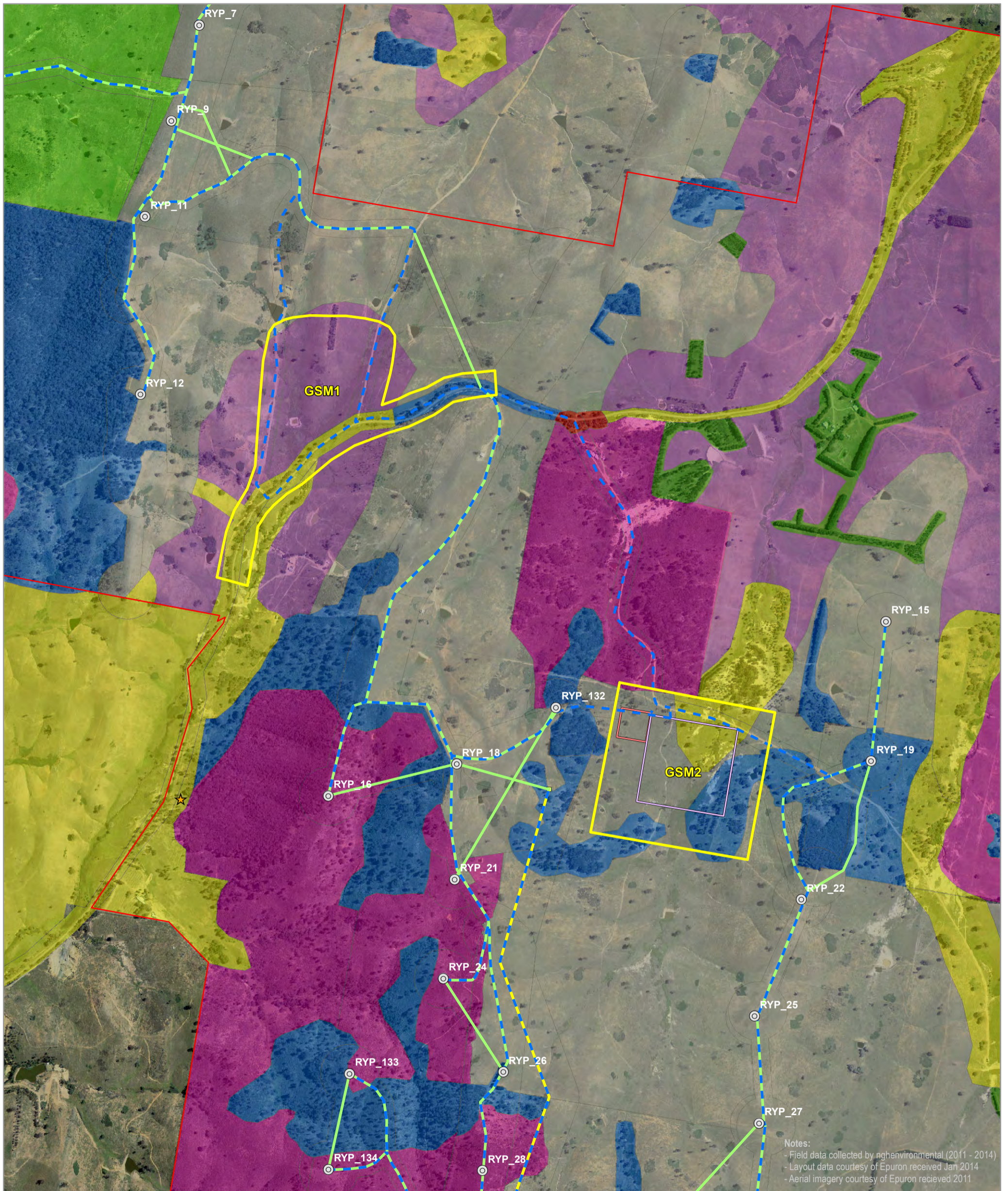
- | | | | | |
|----------------------------|-------------------------|------------------------|---------------------------|-----------------------------|
| Site perimeter | Substation | Vegetation type | Native pasture | Golden Sun Moth survey site |
| Infrastructure | Termination compound | Argyle Apple Forest | Phragmites within dam | Reference site |
| Turbine location | O&M building | Box-Gum Woodland | Planted native vegetation | Golden Sun Moth records |
| Access track | Construction compound | Brittle Gum Forest | Red Box Woodland | |
| Underground cabling | Concrete batching plant | Derived Grassland | Scribbly Gum Forest | |
| Overhead transmission line | | Exotic pasture | Sifton Bush Shrubland | |

0 2.5 5 Kilometers

A3 @ 1:125000
 Ref: 5439 - 7
 Author: DM

ngh environmental

www.nghenvironmental.com.au



GOLDEN SUN MOTH SURVEY EFFORT AND RESULTS MAP 1

Rye Park Wind Farm Biodiversity Assessment

- | | | | | |
|---|--|---|--|--|
| <ul style="list-style-type: none"> □ Site perimeter Infrastructure ⊙ Turbine location - Access track - Underground cabling - Overhead transmission line | <ul style="list-style-type: none"> □ Substation □ Termination compound □ O&M building □ Construction compound □ Concrete batching plant | <p>Vegetation type</p> <ul style="list-style-type: none"> Argyle Apple Forest Box-Gum Woodland Brittle Gum Forest Derived Grassland Exotic pasture | <ul style="list-style-type: none"> Native pasture Phragmites within dam Planted native vegetation Red Box Woodland Scribbly Gum Forest Sifton Bush Shrubland | <ul style="list-style-type: none"> □ Golden Sun Moth survey site ★ Reference site ▲ Golden Sun Moth records |
|---|--|---|--|--|

0 250 500 Meters

A3 @ 1:12500
 Ref: 5439 - 7
 Author: DM

ngh environmental

www.nghenvironmental.com.au