

**KOALA RANDOM GRID BASED SPOT ASSESSMENT TECHNIQUE SURVEY EFFORT MAP 2**

**Rye Park Wind Farm Biodiversity Assessment**

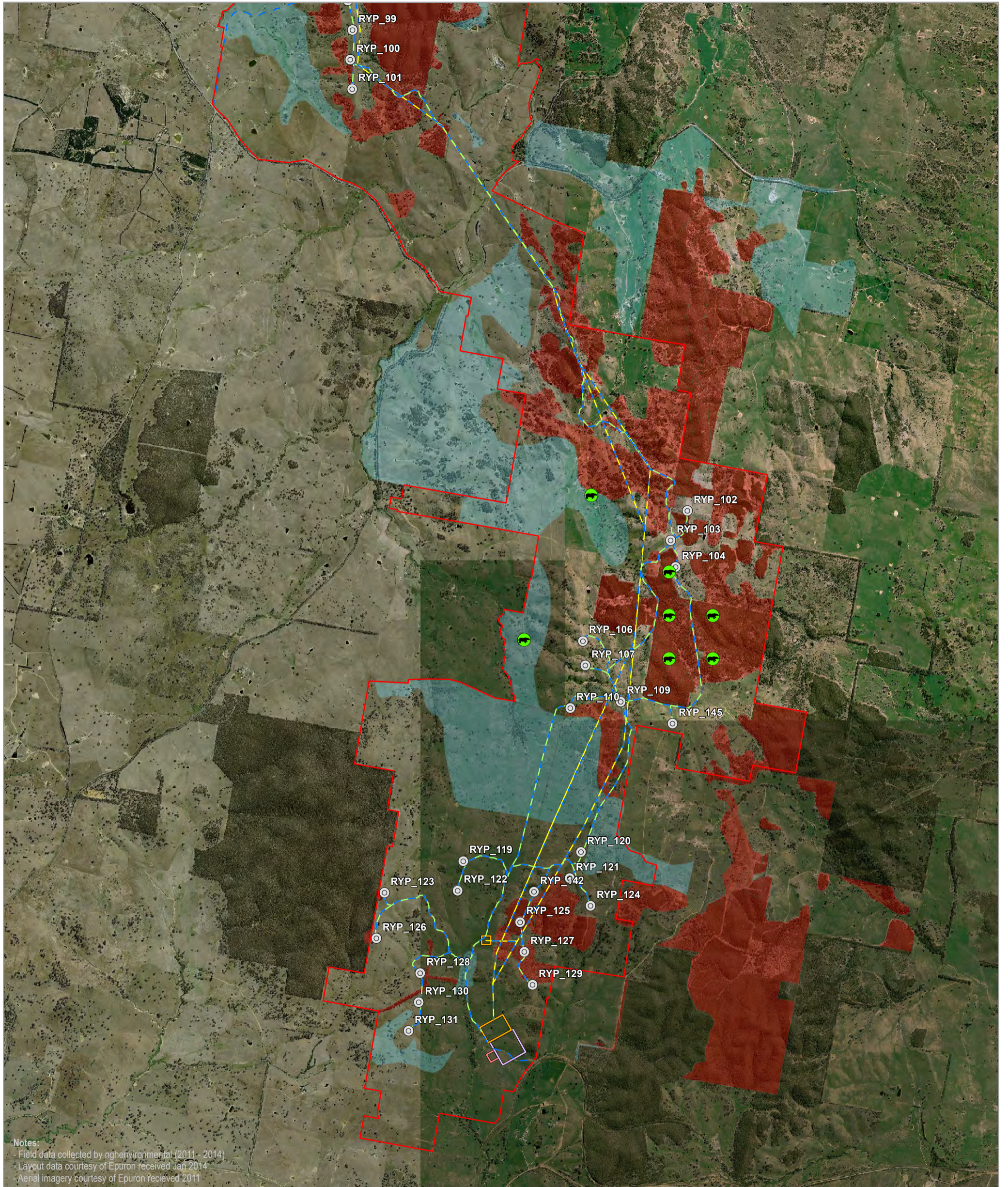
- |                              |                           |               |                |
|------------------------------|---------------------------|---------------|----------------|
| □ Site perimeter             | □ Substation              | Koala habitat | ● Koala survey |
| Infrastructure               | □ Termination compound    | ■ Forest      |                |
| ⊙ Turbine location           | □ O&M building            | ■ Woodland    |                |
| - Access track               | □ Construction compound   |               |                |
| - Underground cabling        | □ Concrete batching plant |               |                |
| - Overhead transmission line |                           |               |                |

0 0.5 1 Kilometres

A3 @ 1:42000  
Ref: 5439 - 5  
Author: DM

**ngh environmental**

www.nghenvironmental.com.au



### KOALA RANDOM GRID BASED SPOT ASSESSMENT TECHNIQUE SURVEY EFFORT MAP 3

#### Rye Park Wind Farm Biodiversity Assessment

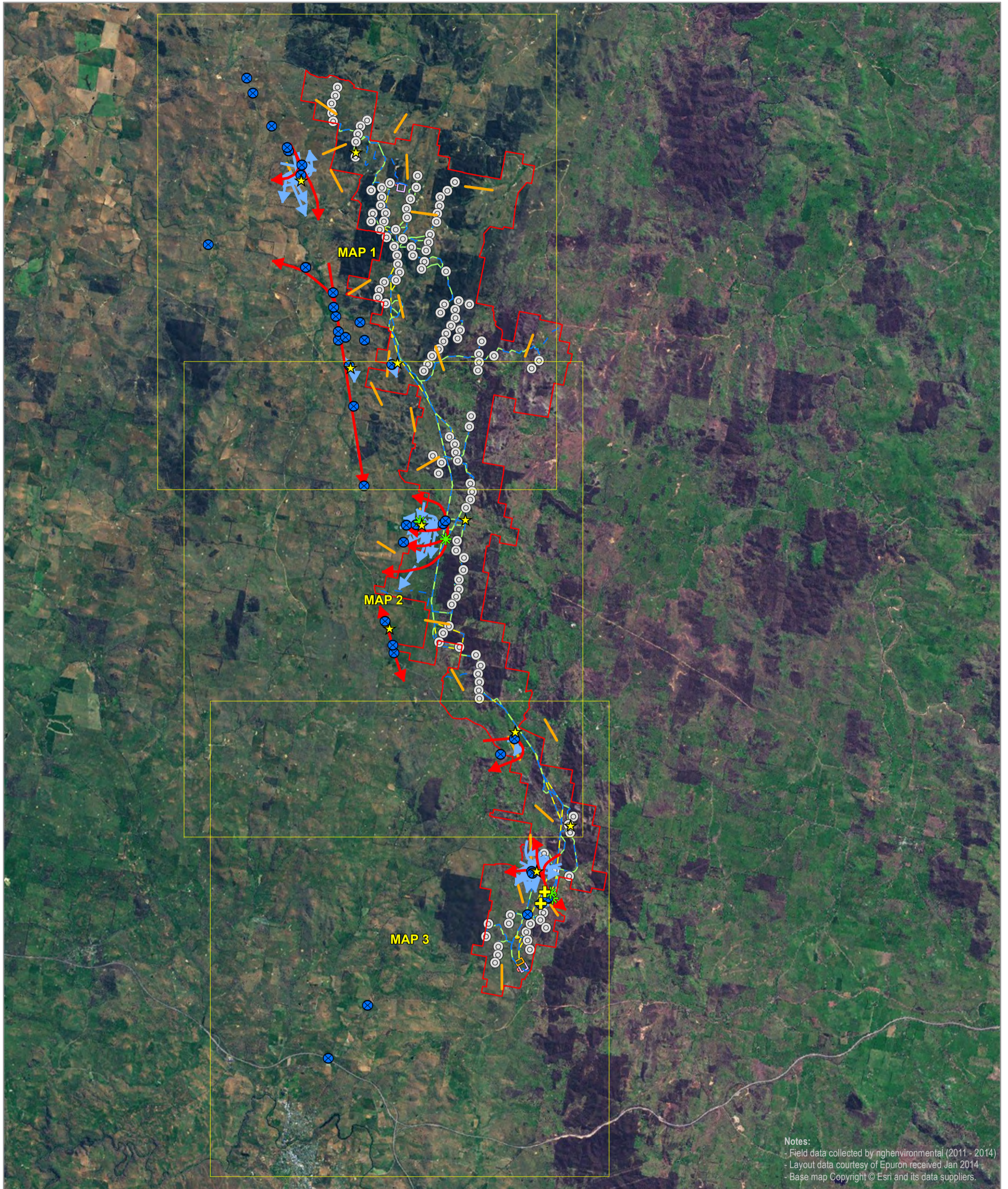
- |   |  |   |  |
|---|--|---|--|
| <ul style="list-style-type: none"> <li>□ Site perimeter</li> <li>Infrastructure</li> <li>⊙ Turbine location</li> <li>- Access track</li> <li>- Underground cabling</li> <li>- Overhead transmission line</li> </ul> | <ul style="list-style-type: none"> <li>□ Substation</li> <li>□ Termination compound</li> <li>□ O&amp;M building</li> <li>□ Construction compound</li> <li>□ Concrete batching plant</li> </ul> | <ul style="list-style-type: none"> <li>● Koala habitat</li> <li>■ Forest</li> <li>■ Woodland</li> </ul> | <ul style="list-style-type: none"> <li>● Koala survey</li> </ul> |
|---|--|---|--|

0 0.5 1 Kilometres

A3 @ 1:42000  
Ref: 5439 - 5  
Author: DM

**ngh environmental**

www.nghenvironmental.com.au



## SUPERB PARROT SURVEY EFFORT AND RESULTS INDEX TO MAPS

### Rye Park Wind Farm Biodiversity Assessment

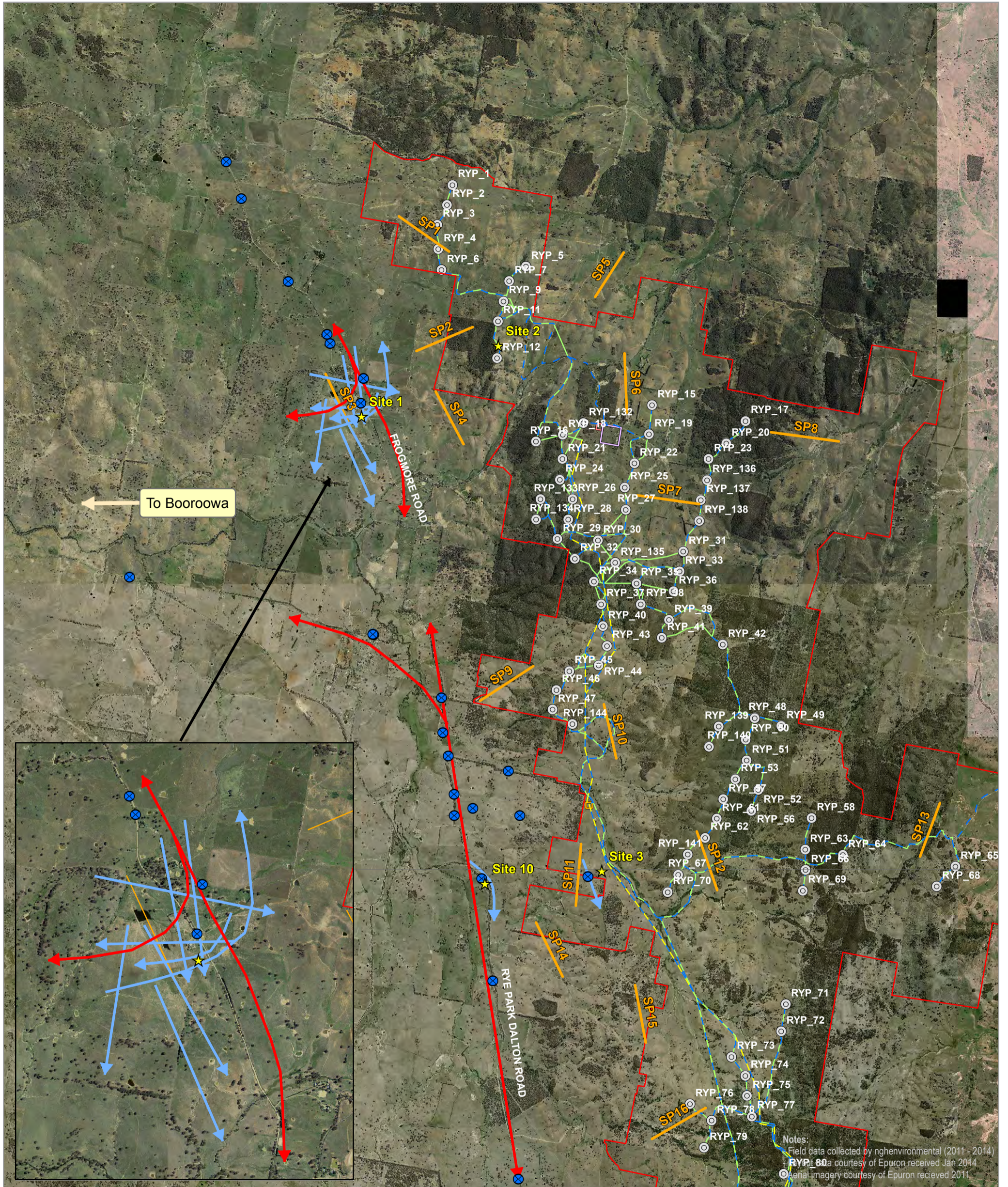
- |                            |                         |                                   |                            |
|----------------------------|-------------------------|-----------------------------------|----------------------------|
| Site perimeter             | Substation              | Flight path viewing station       | Primary movement corridors |
| Turbine location           | Termination compound    | Superb Parrot transect            | Observed flight paths      |
| Access track               | O&M building            | Superb Parrot observation         |                            |
| Underground cabling        | Construction compound   | Superb Parrot nest                |                            |
| Overhead transmission line | Concrete batching plant | Potential Superb Parrot nest tree |                            |

0 1 2 Kilometers

A3 @ 1:150000  
 Ref: 5439 - 6  
 Author: DM

**ngh environmental**

www.nghenvironmental.com.au



**SUPERB PARROT SURVEY EFFORT AND RESULTS MAP 1**

**Rye Park Wind Farm Biodiversity Assessment**

- |                              |                           |                                     |                              |
|------------------------------|---------------------------|-------------------------------------|------------------------------|
| □ Site perimeter             | □ Substation              | ★ Flight path viewing station       | ▶ Primary movement corridors |
| ⊙ Turbine location           | □ Termination compound    | — Superb Parrot transect            | ▶ Observed flight paths      |
| — Access track               | □ O&M building            | ⊙ Superb Parrot observation         |                              |
| — Underground cabling        | □ Construction compound   | ★ Superb Parrot nest                |                              |
| — Overhead transmission line | □ Concrete batching plant | ⊕ Potential Superb Parrot nest tree |                              |

0 1 2 Kilometers

A3 @ 1:60000  
 Ref: 5439 - 6  
 Author: DM

**ngh environmental**

www.nghenvironmental.com.au