

Notes:  
 - Field data collected by nghenvironmental (2011 - 2014)  
 - Layout data courtesy of Epron received Jan 2014  
 - Aerial imagery courtesy of Epron received 2011

### FAUNA GENERAL SURVEY RESULTS MAP 1

#### Rye Park Wind Farm Biodiversity Assessment

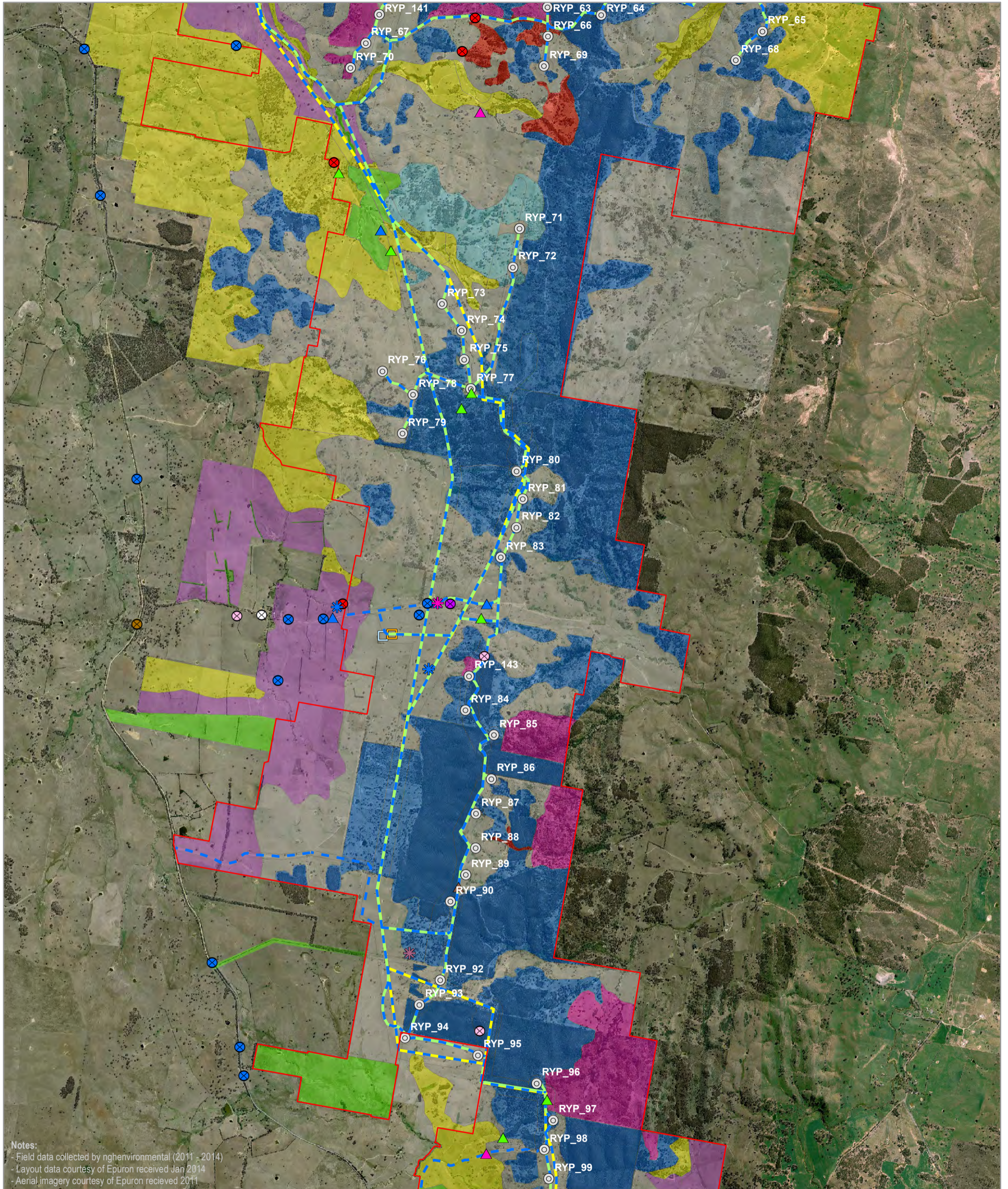
- |  |   |  |  |   |
|--|---|--|--|---|
| <ul style="list-style-type: none"> <li>Site perimeter</li> <li>Infrastructure</li> <li>Turbine location</li> <li>Access track</li> <li>Underground cabling</li> <li>Overhead transmission line</li> <li>Substation</li> <li>Termination compound</li> <li>O&amp;M building</li> <li>Construction compound</li> </ul> | <ul style="list-style-type: none"> <li>Concrete batching plant</li> <li>Threatened Species</li> <li>Nests</li> <li>Diamond Firetail nest</li> <li>Superb Parrot nest</li> <li>Wedge-tailed Eagle nest</li> <li>Nankeen Kestrel nest</li> <li>Potential Superb Parrot nest tree</li> </ul> | <ul style="list-style-type: none"> <li>Birds</li> <li>Brown Treecreeper</li> <li>Diamond Firetail</li> <li>Flame Robin</li> <li>Hooded Robin</li> <li>Superb Parrot</li> <li>Painted Honeyeater</li> <li>Rainbow Bee-eater</li> <li>Speckled Warbler</li> <li>Varied Sittella</li> <li>White-fronted Chat</li> <li>Eastern Bentwing Bat</li> <li>Superb Parrot</li> <li>Painted Honeyeater</li> <li>Rainbow Bee-eater</li> </ul> | <ul style="list-style-type: none"> <li>Raptors</li> <li>Black-shouldered Kite</li> <li>Brown Falcon</li> <li>Brown Goshawk</li> <li>Nankeen Kestrel</li> <li>Wedge-tailed Eagle</li> <li>Reptiles</li> <li>Striped Legless Lizard</li> <li>Vegetation type</li> <li>Argyle Apple Forest</li> </ul> | <ul style="list-style-type: none"> <li>Box-Gum Woodland</li> <li>Brittle Gum Forest</li> <li>Derived Grassland</li> <li>Exotic pasture</li> <li>Native pasture</li> <li>Phragmites within dam</li> <li>Planted native vegetation</li> <li>Red Box Woodland</li> <li>Scribbly Gum Forest</li> <li>Sifton Bush Shrubland</li> </ul> |
|--|---|--|--|---|

0 0.5 1 Kilometres

A3 @ 1:42000  
 Ref: 5439 - 3  
 Author: DM

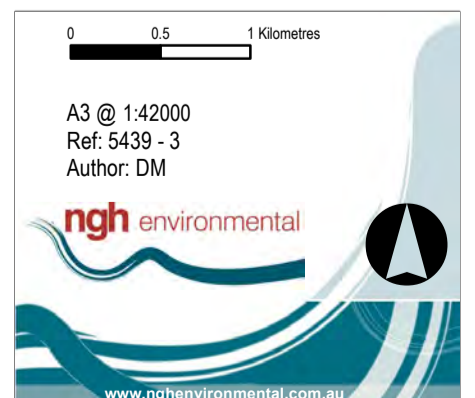
**ngh environmental**

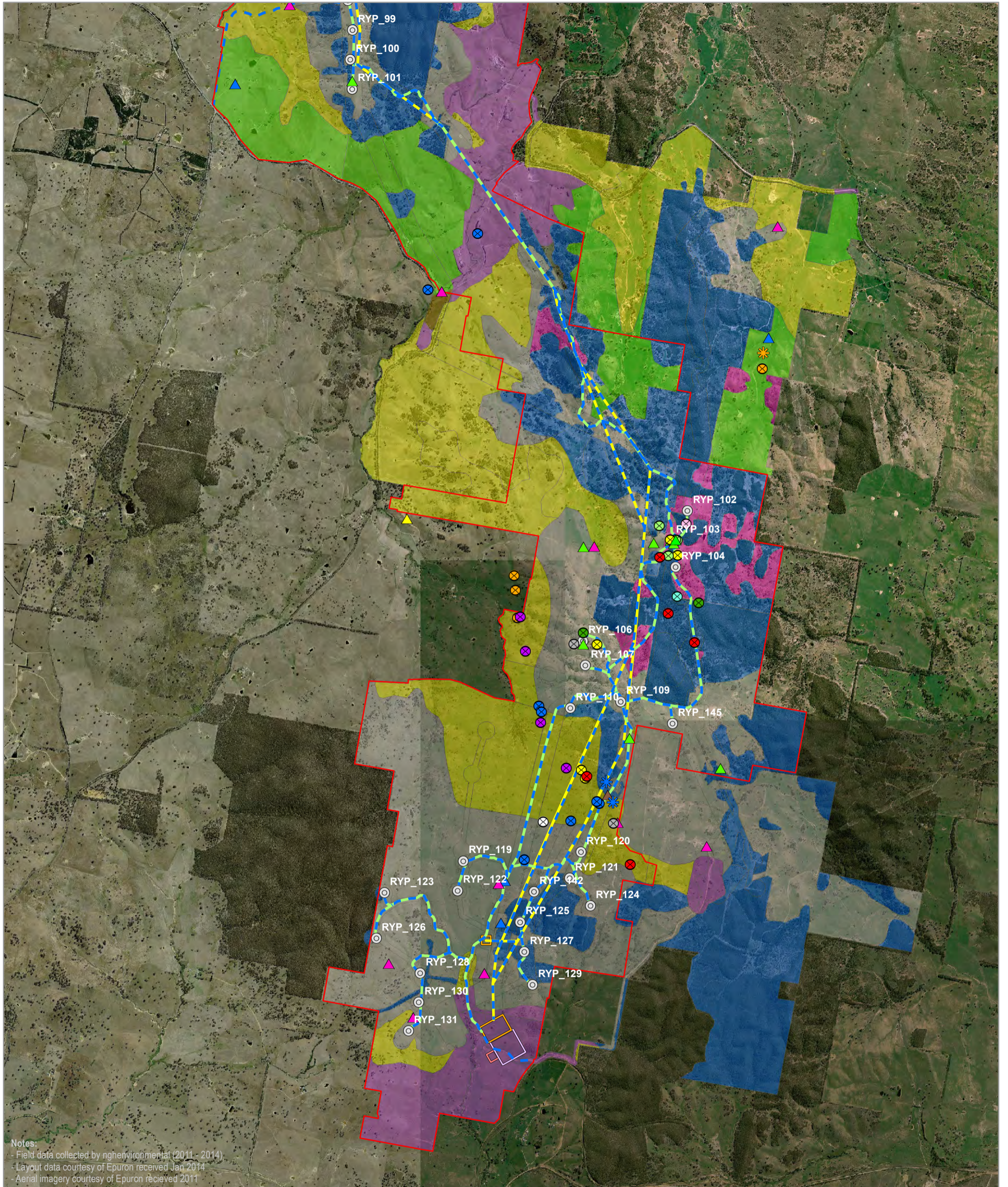
www.nghenvironmental.com.au



## FAUNA GENERAL SURVEY RESULTS MAP 2

### Rye Park Wind Farm Biodiversity Assessment





Notes:  
 - Field data collected by nghenvironmental (2011 - 2014)  
 - Layout data courtesy of Epuron received Jan 2014  
 - Aerial imagery courtesy of Epuron received 2011

### FAUNA GENERAL SURVEY RESULTS MAP 3

#### Rye Park Wind Farm Biodiversity Assessment

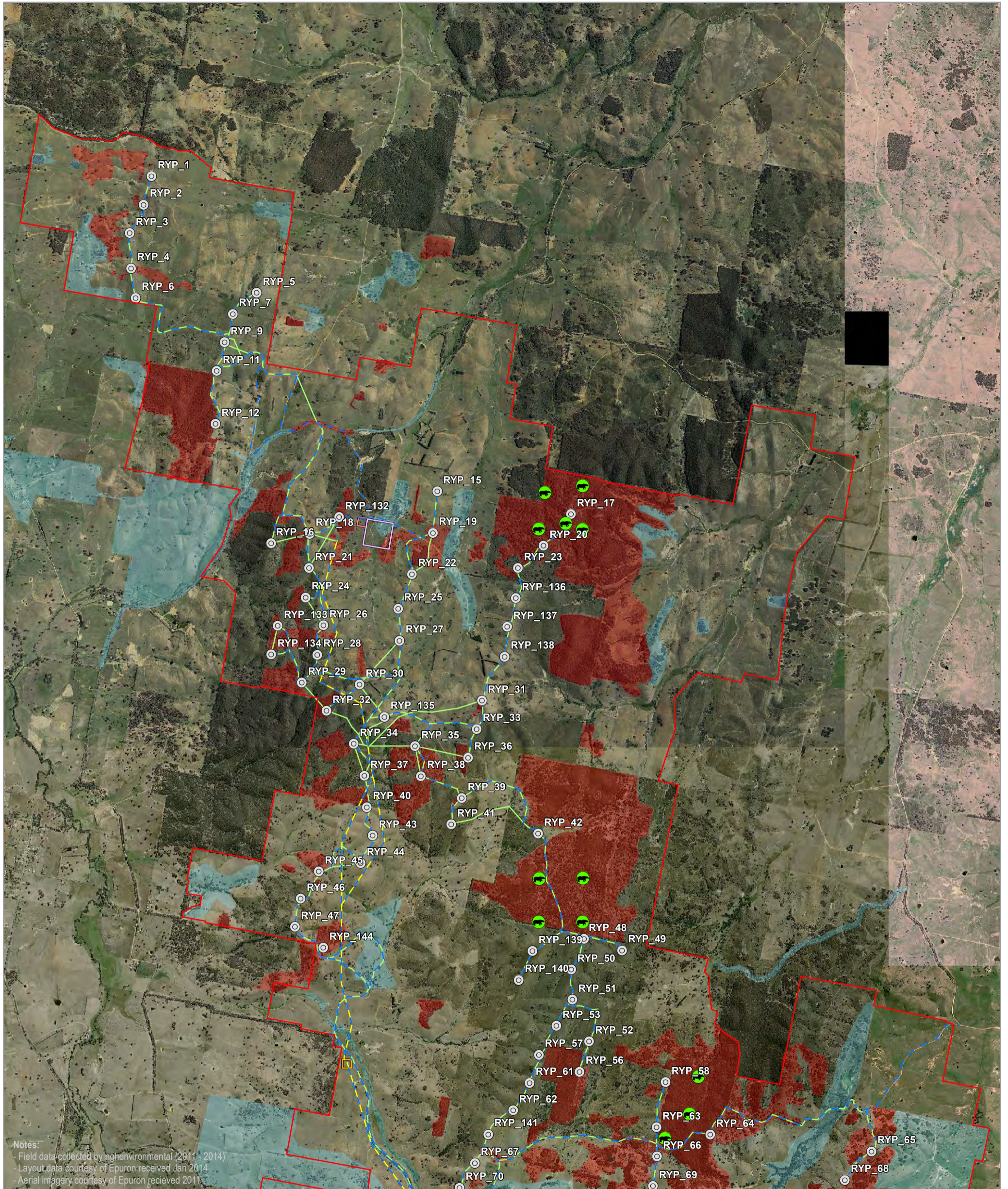
- |  |   |   |  |   |
|--|---|---|--|---|
| <ul style="list-style-type: none"> <li>Site perimeter</li> <li>Infrastructure</li> <li>Turbine location</li> <li>Access track</li> <li>Underground cabling</li> <li>Overhead transmission line</li> <li>Substation</li> <li>Termination compound</li> <li>O&amp;M building</li> <li>Construction compound</li> </ul> | <ul style="list-style-type: none"> <li>Concrete batching plant</li> <li>Threatened Species</li> <li>Nests</li> <li>Diamond Firetail nest</li> <li>Superb Parrot nest</li> <li>Wedge-tailed Eagle nest</li> <li>Nankeen Kestrel nest</li> <li>Potential Superb Parrot nest tree</li> </ul> | <ul style="list-style-type: none"> <li>Birds</li> <li>Brown Treecreeper</li> <li>Diamond Firetail</li> <li>Flame Robin</li> <li>Hooded Robin</li> <li>Scarlet Robin</li> <li>Speckled Warbler</li> <li>Varied Sittella</li> <li>White-fronted Chat</li> <li>Eastern Bentwing Bat</li> <li>Superb Parrot</li> <li>Painted Honeyeater</li> <li>Rainbow Bee-eater</li> </ul> | <ul style="list-style-type: none"> <li>Raptors</li> <li>Black-shouldered Kite</li> <li>Brown Falcon</li> <li>Brown Goshawk</li> <li>Nankeen Kestrel</li> <li>Wedge-tailed Eagle</li> <li>Reptiles</li> <li>Striped Legless Lizard</li> <li>Vegetation type</li> <li>Argyle Apple Forest</li> </ul> | <ul style="list-style-type: none"> <li>Box-Gum Woodland</li> <li>Brittle Gum Forest</li> <li>Derived Grassland</li> <li>Exotic pasture</li> <li>Native pasture</li> <li>Phragmites within dam</li> <li>Planted native vegetation</li> <li>Red Box Woodland</li> <li>Scribbly Gum Forest</li> <li>Sifton Bush Shrubland</li> </ul> |
|--|---|---|--|---|

0 0.5 1 Kilometres

A3 @ 1:42000  
 Ref: 5439 - 3  
 Author: DM

**ngh environmental**

www.nghenvironmental.com.au



### KOALA RANDOM GRID BASED SPOT ASSESSMENT TECHNIQUE SURVEY EFFORT MAP 1

#### Rye Park Wind Farm Biodiversity Assessment

- |                              |                           |               |                |
|------------------------------|---------------------------|---------------|----------------|
| □ Site perimeter             | □ Substation              | Koala habitat | ● Koala survey |
| Infrastructure               | □ Termination compound    | ■ Forest      |                |
| ⊙ Turbine location           | □ O&M building            | ■ Woodland    |                |
| — Access track               | □ Construction compound   |               |                |
| — Underground cabling        | □ Concrete batching plant |               |                |
| — Overhead transmission line |                           |               |                |

0 0.5 1 Kilometres

A3 @ 1:42000  
Ref: 5439 - 5  
Author: DM

**ngh environmental**

www.nghenvironmental.com.au