

GENERAL SURVEY EFFORT AND RESULTS INDEX TO MAPS

Rye Park Wind Farm Biodiversity Assessment

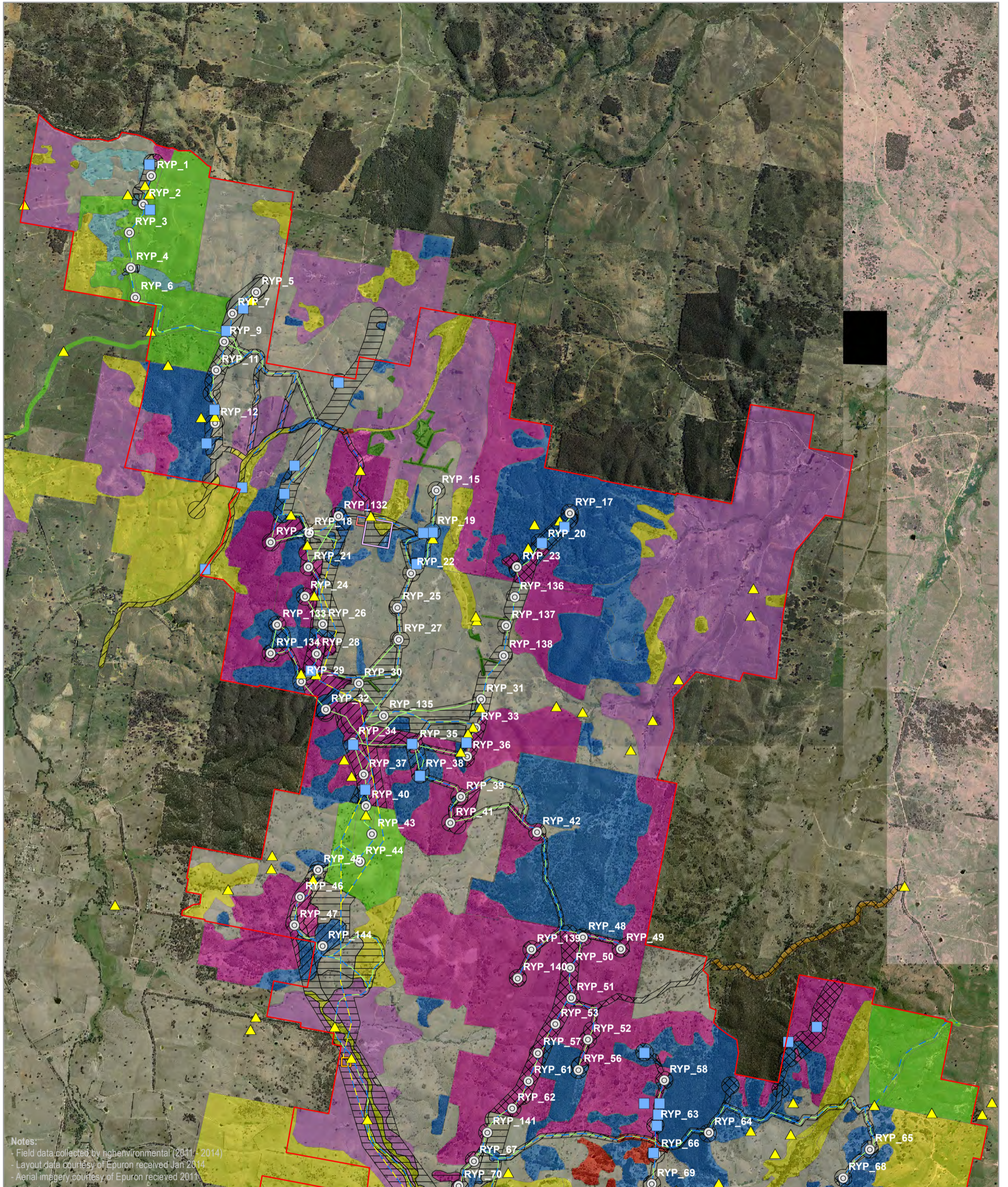
<ul style="list-style-type: none"> □ Site perimeter Infrastructure ⊙ Turbine location — Access track — Underground cabling — Overhead transmission line 	<ul style="list-style-type: none"> □ Substation □ Termination compound □ O&M building □ Construction compound □ Concrete batching plant 	<p>Vegetation type</p> <ul style="list-style-type: none"> Argyle Apple Forest Box-Gum Woodland Brittle Gum Forest Derived Grassland Exotic pasture 	<ul style="list-style-type: none"> Native pasture Phragmites within dam Planted native vegetation Red Box Woodland Scribbly Gum Forest Sifton Bush Shrubland 	<p>Vegetation condition</p> <ul style="list-style-type: none"> ⊠ Good ⊠ Moderate ⊠ Poor
---	--	---	--	--

0 2.5 5 Kilometres

A3 @ 1:125000
Ref: 5439 - 1
Author: DM

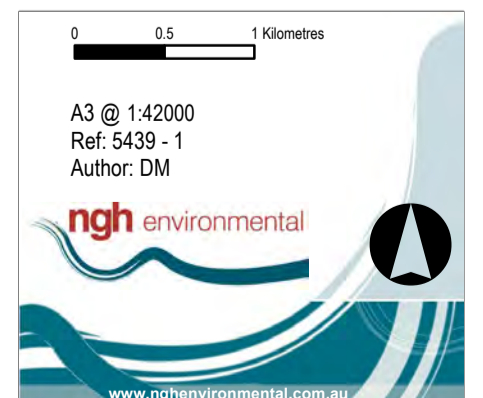
ngh environmental

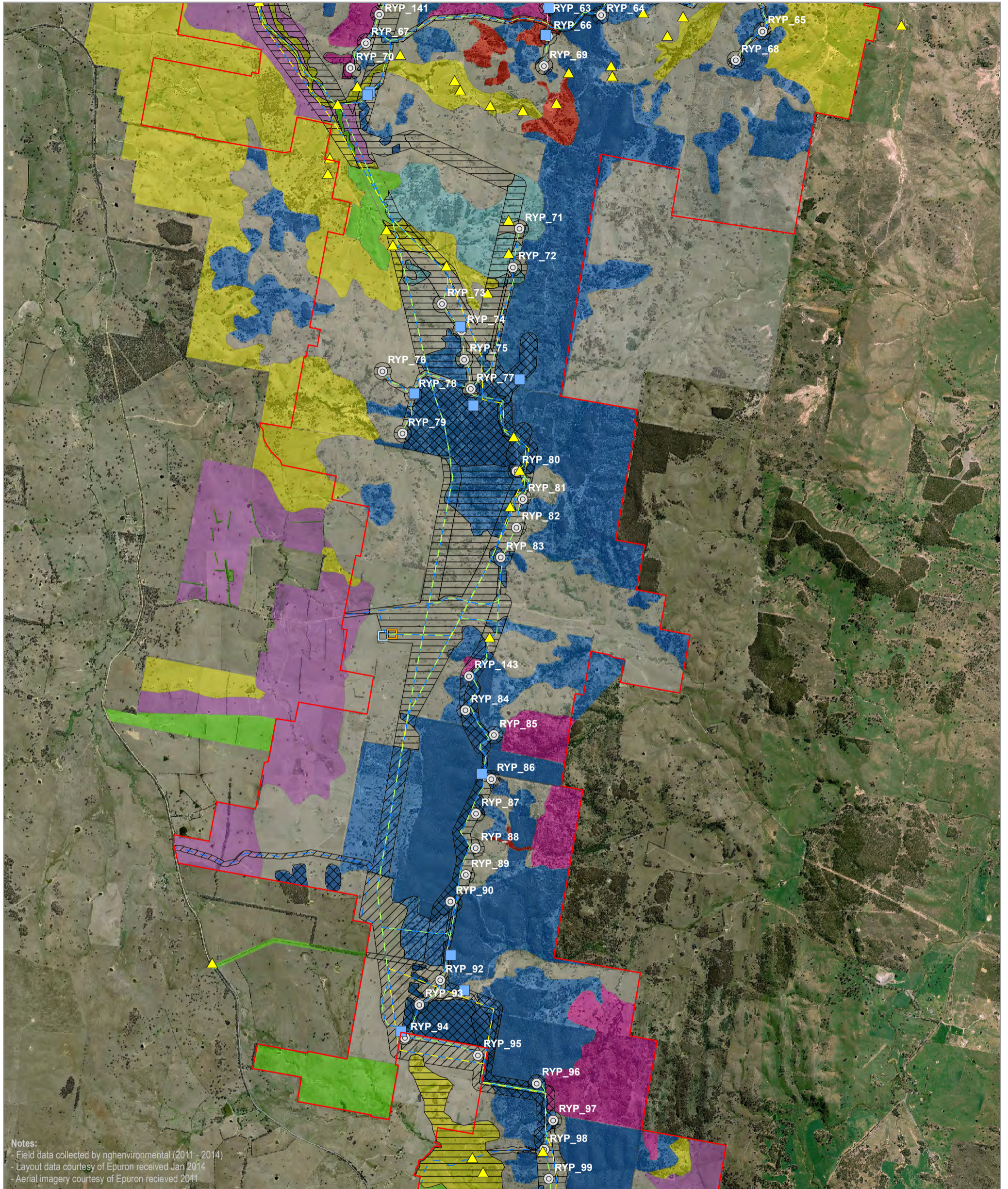
www.nghenvironmental.com.au



FLORA SURVEY EFFORT AND RESULTS MAP 1

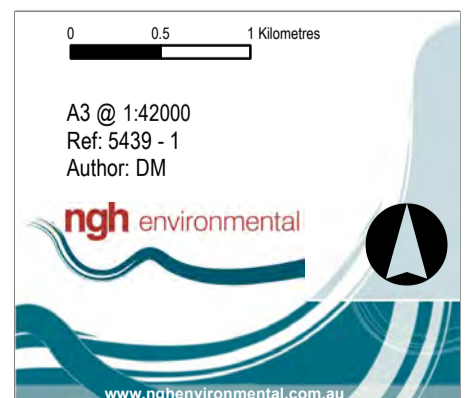
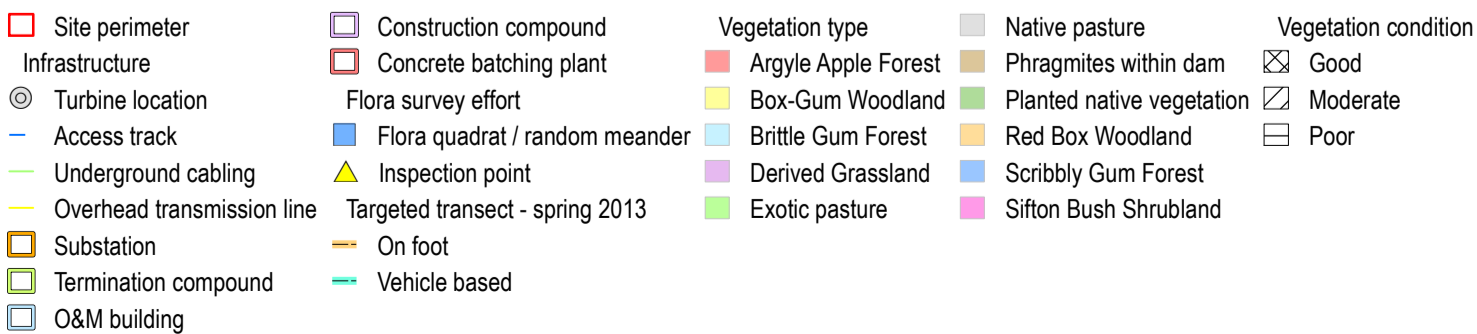
Rye Park Wind Farm Biodiversity Assessment

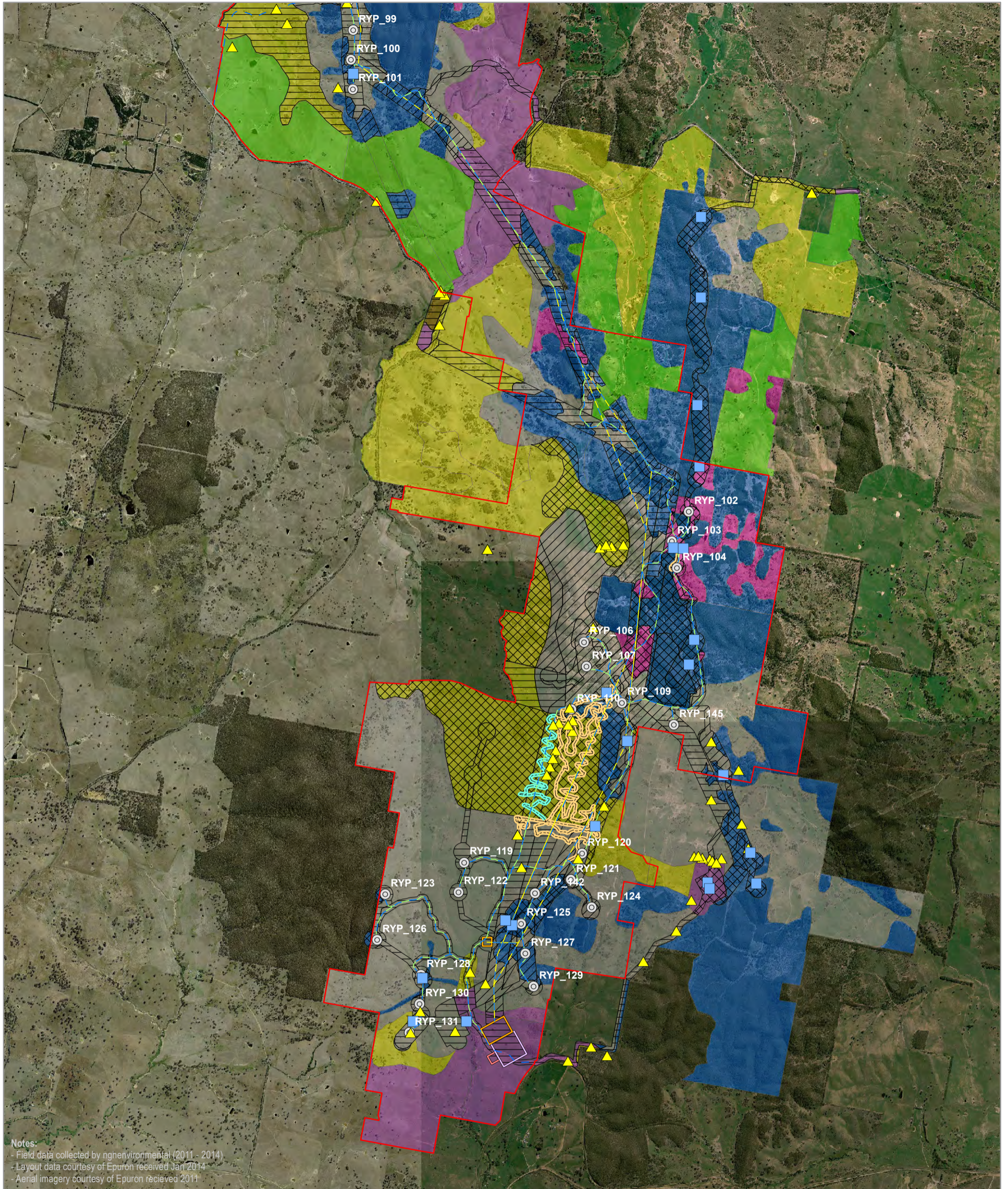




FLORA SURVEY EFFORT AND RESULTS MAP 2

Rye Park Wind Farm Biodiversity Assessment





FLORA SURVEY EFFORT AND RESULTS MAP 3

Rye Park Wind Farm Biodiversity Assessment

