



## PROPOSED INFRASTRUCTURE LAYOUT INDEX MAP

### Rye Park Wind Farm Biodiversity Assessment

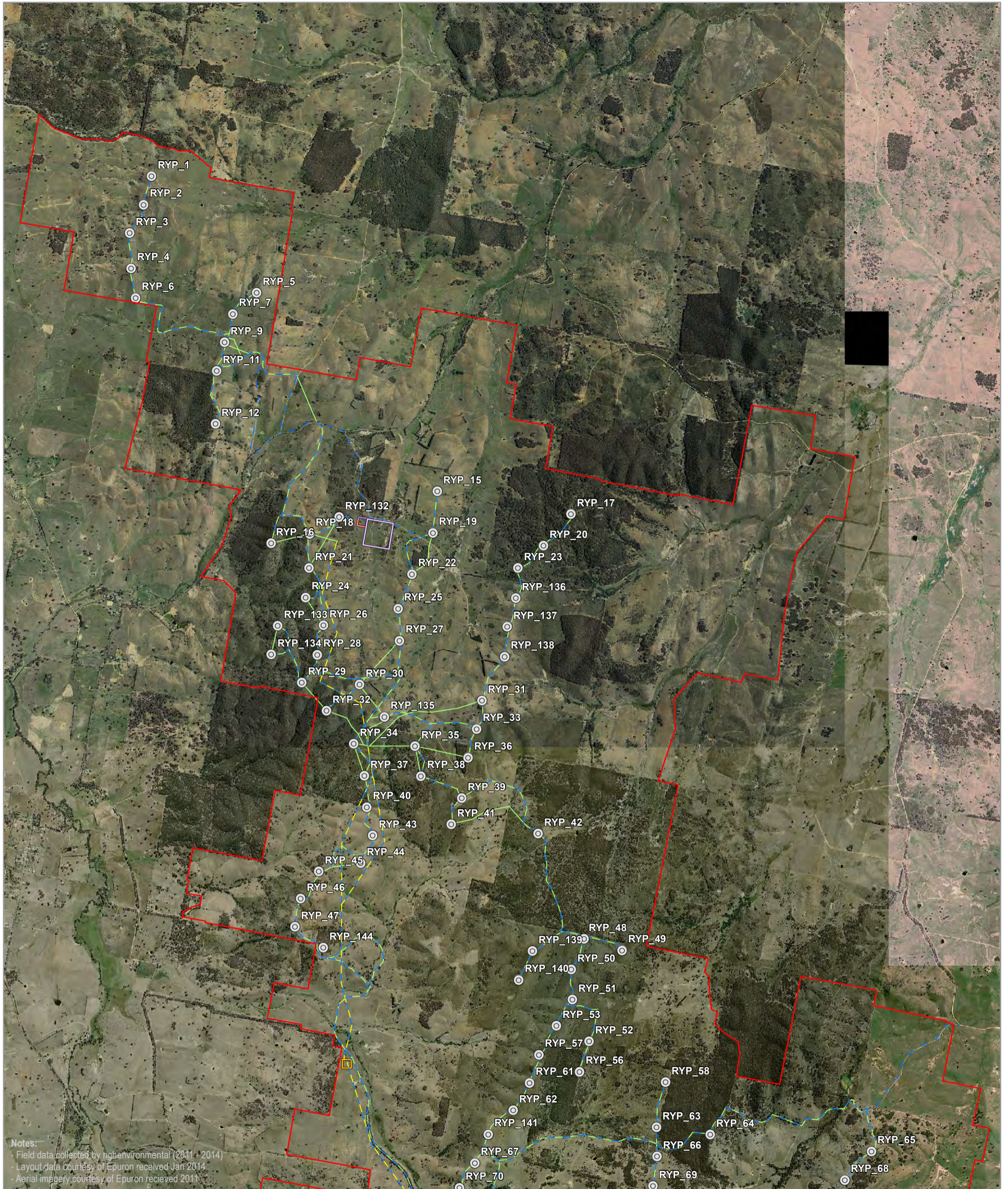
- |                            |                       |                         |
|----------------------------|-----------------------|-------------------------|
| Site perimeter             | Infrastructure        | Substation              |
| Turbine location           | Termination compound  | O&M building            |
| Access track               | Construction compound | Concrete batching plant |
| Underground cabling        |                       |                         |
| Overhead transmission line |                       |                         |

0 2.5 5 Kilometres

A3 @ 1:125000  
Ref: 5439 - 10  
Author: DM

ngh environmental

[www.nghenvironmental.com.au](http://www.nghenvironmental.com.au)



Notes:  
 - Field data collected by nghenvironmental (2011 - 2014)  
 - Layout data courtesy of Epuron received Jan 2014  
 - Aerial imagery courtesy of Epuron received 2011

### PROPOSED INFRASTRUCTURE LAYOUT MAP 1

#### Rye Park Wind Farm Biodiversity Assessment

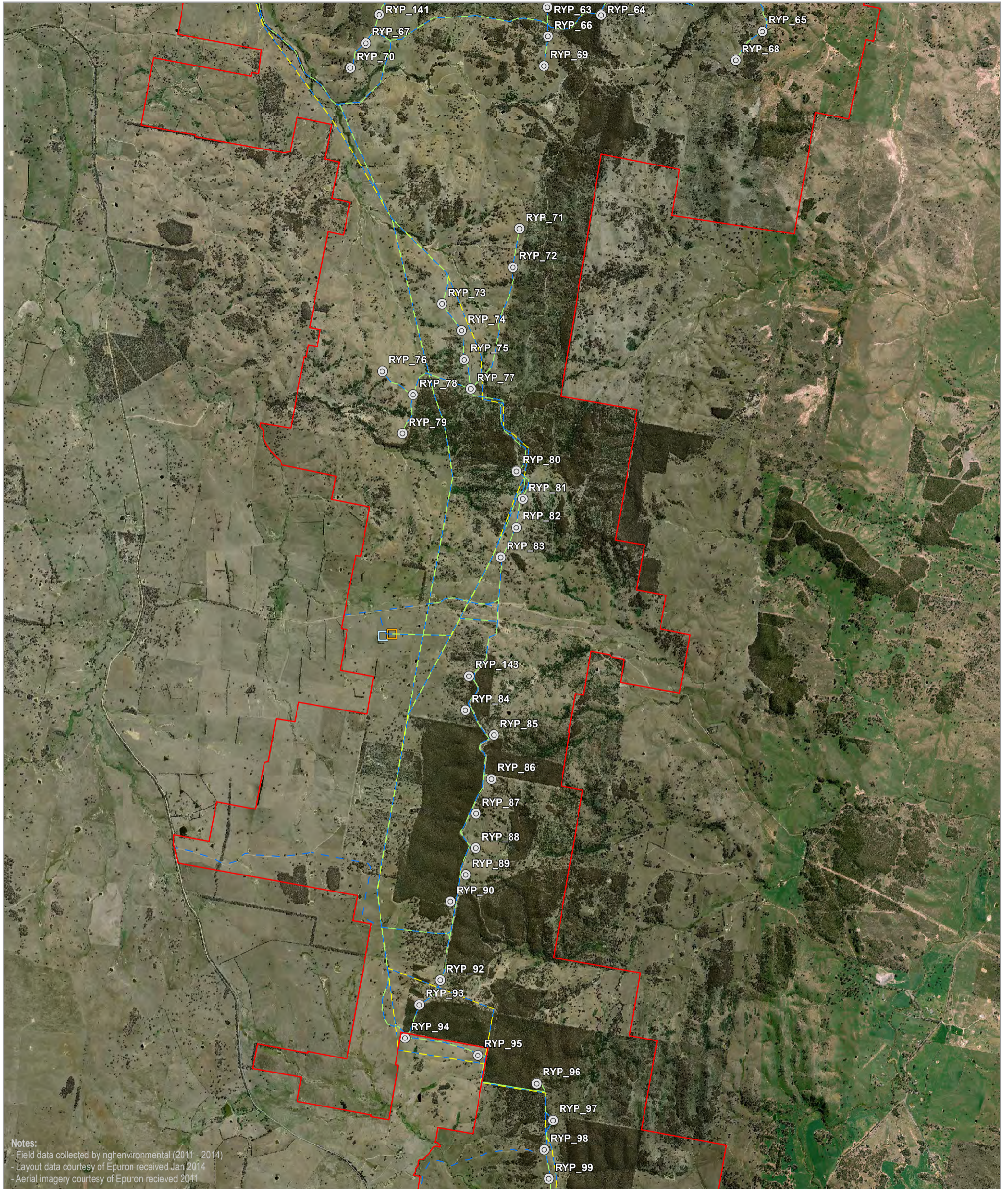
- |                            |                       |                         |
|----------------------------|-----------------------|-------------------------|
| Site perimeter             | Infrastructure        | Substation              |
| Turbine location           | Termination compound  | O&M building            |
| Access track               | Construction compound | Concrete batching plant |
| Underground cabling        |                       |                         |
| Overhead transmission line |                       |                         |

0 0.5 1 Kilometres

A3 @ 1:42000  
 Ref: 5439 - 10  
 Author: DM

ngh environmental

www.nghenvironmental.com.au



Notes:  
 - Field data collected by nghenvironmental (2011 - 2014)  
 - Layout data courtesy of Epuron received Jan 2014  
 - Aerial imagery courtesy of Epuron received 2011

## PROPOSED INFRASTRUCTURE LAYOUT MAP 2

### Rye Park Wind Farm Biodiversity Assessment

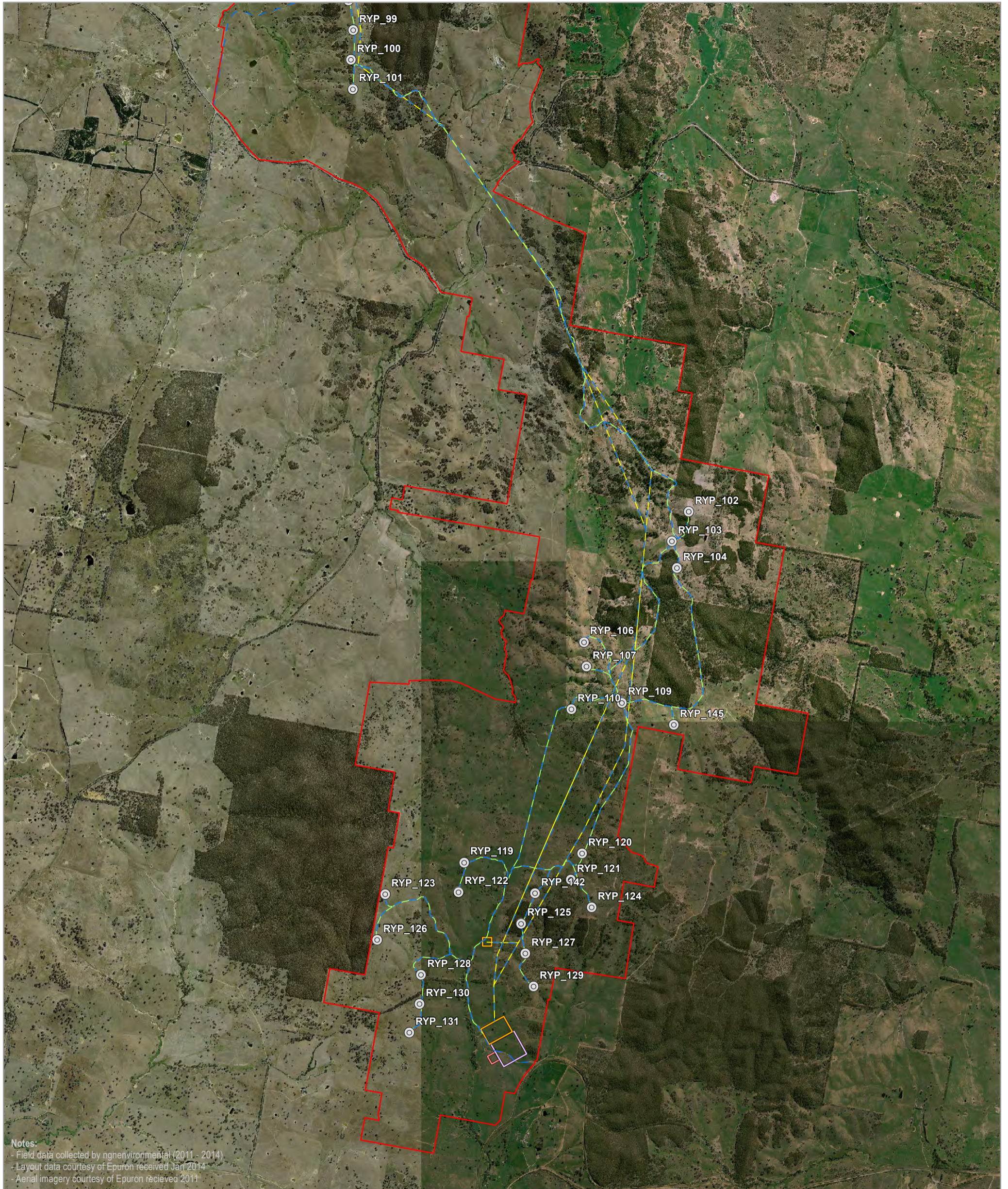
- |                            |                            |                         |
|----------------------------|----------------------------|-------------------------|
| Site perimeter             | Infrastructure             | Substation              |
| Turbine location           | Access track               | Termination compound    |
| Access track               | Underground cabling        | O&M building            |
| Underground cabling        | Overhead transmission line | Construction compound   |
| Overhead transmission line |                            | Concrete batching plant |

0 0.5 1 Kilometres

A3 @ 1:42000  
 Ref: 5439 - 10  
 Author: DM

**ngh environmental**

[www.nghenvironmental.com.au](http://www.nghenvironmental.com.au)



### PROPOSED INFRASTRUCTURE LAYOUT MAP 3

#### Rye Park Wind Farm Biodiversity Assessment

- |   |  |
|---|--|
| <ul style="list-style-type: none"> <li><span style="color: red;">□</span> Site perimeter</li> <li><span style="color: blue;">⊙</span> Turbine location</li> <li><span style="color: blue;">—</span> Access track</li> <li><span style="color: green;">—</span> Underground cabling</li> <li><span style="color: yellow;">—</span> Overhead transmission line</li> </ul> | <p>Infrastructure</p> <ul style="list-style-type: none"> <li><span style="border: 1px solid orange; display: inline-block; width: 10px; height: 10px;"></span> Substation</li> <li><span style="border: 1px solid green; display: inline-block; width: 10px; height: 10px;"></span> Termination compound</li> <li><span style="border: 1px solid blue; display: inline-block; width: 10px; height: 10px;"></span> O&amp;M building</li> <li><span style="border: 1px solid purple; display: inline-block; width: 10px; height: 10px;"></span> Construction compound</li> <li><span style="border: 1px solid red; display: inline-block; width: 10px; height: 10px;"></span> Concrete batching plant</li> </ul> |
|---|--|

0 0.5 1 Kilometres

A3 @ 1:42000  
Ref: 5439 - 10  
Author: DM

**ngh environmental**

[www.nghenvironmental.com.au](http://www.nghenvironmental.com.au)

