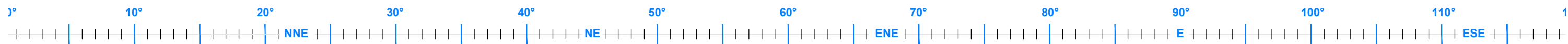




Uninvolved residential dwelling R20 - Existing view north to east south east. Photo coordinate Easting:676044 Northing:6181745 (MGAz55)



Uninvolved residential dwelling R20 - Existing view through 120°. Approximate distance to closest visible Rye Park wind turbine 1,870 m

Notes

Composite panorama photograph taken with a Nikon D90 digital SLR camera with 50 mm prime lens.

Individual panorama photograph coordinate map datum is MGAz55 to ± 5 m.

Extent of potential wind turbine visibility and directional bearing illustrated on each photomontage is indicative only.

The Nikon D90 digital SLR camera has a crop factor of 1.6. A single photograph taken with a 50mm lens will result in a view angle equivalent to a single 35mm SLR camera photograph taken with a 75mm lens.

Refer Figure 28 for residential dwelling locations



Indicative extent of a single frame photograph (in landscape format) taken with the Nikon D90 digital SLR camera with a 50mm lens

Uninvolved residential dwelling photomontage R20

EPURON

Rye Park Wind Farm Pty Ltd

GREEN BEAN DESIGN

landscape architects

RYE PARK WIND FARM



Uninvolved residential dwelling R22- Existing view north west to north east. Photo coordinate Easting:676120 Northing:6181058 (MGAz55)



Uninvolved residential dwelling R22- Proposed view through 120°. Approximate distance to closest visible wind turbine 1,850 m

Notes

Composite panorama photograph taken with a Nikon D90 digital SLR camera with 50 mm prime lens.

Individual panorama photograph coordinate map datum is MGAz55 to ± 5 m.

Extent of potential wind turbine visibility and directional bearing illustrated on each photomontage is indicative only.

The Nikon D90 digital SLR camera has a crop factor of 1.6. A single photograph taken with a 50mm lens will result in a view angle equivalent to a single 35mm SLR camera photograph taken with a 75mm lens.

Refer Figure 28 for residential dwelling locations



Indicative extent of a single frame photograph (in landscape format) taken with the Nikon D90 digital SLR camera with a 50mm lens

Uninvolved residential dwelling photomontage R22

EPURON

Rye Park Wind Farm Pty Ltd

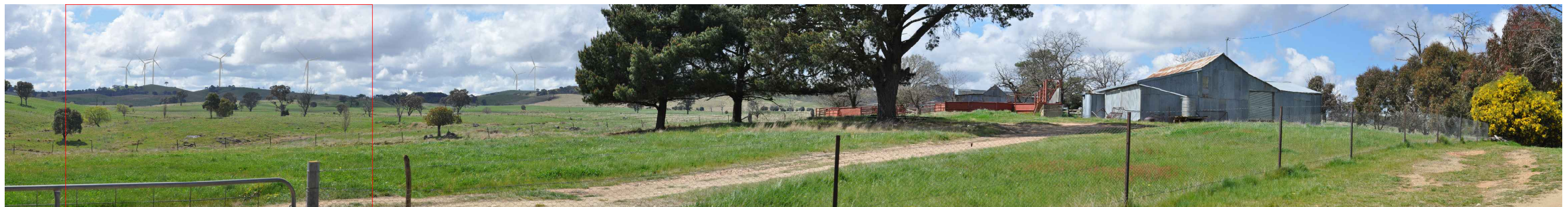
GREEN BEAN DESIGN

landscape architects

RYE PARK WIND FARM



Uninvolved residential dwelling R24- Existing view north north east to south east. Photo coordinate Easting:674884 Northing:6183559 (MGAz55)



Uninvolved residential dwelling R24- Proposed view through 120°. Approximate distance to closest visible wind turbine 2,150 m

Notes

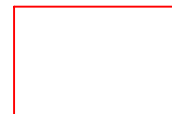
Composite panorama photograph taken with a Nikon D90 digital SLR camera with 50 mm prime lens.

Individual panorama photograph coordinate map datum is MGAz55 to ± 5 m.

Extent of potential wind turbine visibility and directional bearing illustrated on each photomontage is indicative only.

The Nikon D90 digital SLR camera has a crop factor of 1.6. A single photograph taken with a 50mm lens will result in a view angle equivalent to a single 35mm SLR camera photograph taken with a 75mm lens.

Refer Figure 28 for residential dwelling locations



Indicative extent of a single frame photograph (in landscape format) taken with the Nikon D90 digital SLR camera with a 50mm lens

Uninvolved residential dwelling photomontage R24

EPURON

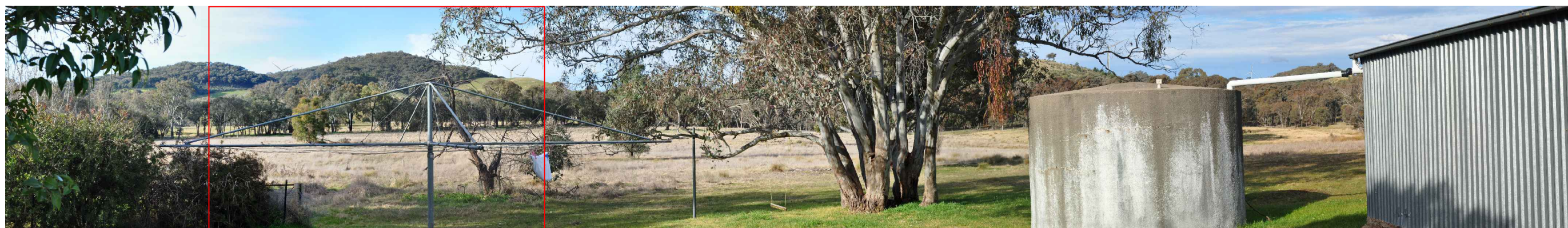
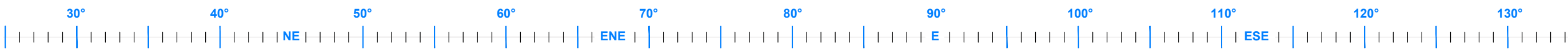
Rye Park Wind Farm Pty Ltd

GREEN BEAN DESIGN
landscape architects

RYE PARK WIND FARM



Uninvolved residential dwelling R29- Existing view north to south east. Photo coordinate Easting:676445 Northing:6177895 (MGAz55)



Uninvolved residential dwelling R29- Proposed view through 110°. Approximate distance to closest visible wind turbine 1,850 m

Notes

Composite panorama photograph taken with a Nikon D90 digital SLR camera with 50 mm prime lens.

Individual panorama photograph coordinate map datum is MGAz55 to ± 5 m.

Extent of potential wind turbine visibility and directional bearing illustrated on each photomontage is indicative only.

The Nikon D90 digital SLR camera has a crop factor of 1.6. A single photograph taken with a 50mm lens will result in a view angle equivalent to a single 35mm SLR camera photograph taken with a 75mm lens.

Refer Figure 28 for residential dwelling locations



Indicative extent of a single frame photograph (in landscape format) taken with the Nikon D90 digital SLR camera with a 50mm lens

Uninvolved residential dwelling photomontage R29

EPURON

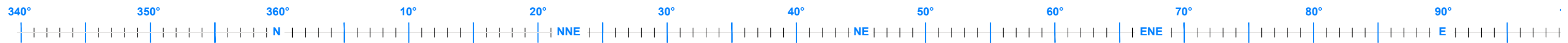
Rye Park Wind Farm Pty Ltd

GREEN BEAN DESIGN
landscape architects

RYE PARK WIND FARM



Uninvolved residential dwelling R38- Existing view north north west to east. Photo coordinate Easting:679632 Northing:6173617 (MGAz55)



Uninvolved residential dwelling R38- Proposed view through 120°. Approximate distance to closest visible wind turbine 1,400 m

Notes

Composite panorama photograph taken with a Nikon D90 digital SLR camera with 50 mm prime lens.

Individual panorama photograph coordinate map datum is MGAz55 to ± 5 m.

Extent of potential wind turbine visibility and directional bearing illustrated on each photomontage is indicative only.

The Nikon D90 digital SLR camera has a crop factor of 1.6. A single photograph taken with a 50mm lens will result in a view angle equivalent to a single 35mm SLR camera photograph taken with a 75mm lens.

Refer Figure 28 for residential dwelling locations



Indicative extent of a single frame photograph (in landscape format) taken with the Nikon D90 digital SLR camera with a 50mm lens

Uninvolved residential dwelling photomontage R38

EPURON

Rye Park Wind Farm Pty Ltd

GREEN BEAN DESIGN
landscape architects

RYE PARK WIND FARM



Uninvolved residential dwelling R40- Existing view east north east to south south east. Photo coordinate Easting:678605 Northing:6171026 (MGAz55)



Uninvolved residential dwelling R40- Proposed view through 95°. Approximate distance to closest visible wind turbine 1,870 m

Notes

Composite panorama photograph taken with a Nikon D90 digital SLR camera with 50 mm prime lens.

Individual panorama photograph coordinate map datum is MGAz55 to ± 5 m.

Extent of potential wind turbine visibility and directional bearing illustrated on each photomontage is indicative only.

The Nikon D90 digital SLR camera has a crop factor of 1.6. A single photograph taken with a 50mm lens will result in a view angle equivalent to a single 35mm SLR camera photograph taken with a 75mm lens.

Refer Figure 28 for residential dwelling locations



Indicative extent of a single frame photograph (in landscape format) taken with the Nikon D90 digital SLR camera with a 50mm lens

RYE PARK WIND FARM

Uninvolved residential dwelling photomontage R40

EPURON

Rye Park Wind Farm Pty Ltd

GREEN BEAN DESIGN
landscape architects



Uninvolved residential dwelling R45- Existing view west to north. Photo coordinate Easting:682827 Northing:6165276 (MGaz55)



Uninvolved residential dwelling R45- Proposed view through 95°. Approximate distance to closest visible wind turbine 1,486 m

Notes

Composite panorama photograph taken with a Nikon D90 digital SLR camera with 50 mm prime lens.

Individual panorama photograph coordinate map datum is MGaz55 to ± 5 m.

Extent of potential wind turbine visibility and directional bearing illustrated on each photomontage is indicative only.

The Nikon D90 digital SLR camera has a crop factor of 1.6. A single photograph taken with a 50mm lens will result in a view angle equivalent to a single 35mm SLR camera photograph taken with a 75mm lens.

Refer Figure 28 for residential dwelling locations



Indicative extent of a single frame photograph (in landscape format) taken with the Nikon D90 digital SLR camera with a 50mm lens

RYE PARK WIND FARM

Uninvolved residential dwelling photomontage R45

EPURON

Rye Park Wind Farm Pty Ltd

GREEN BEAN DESIGN
landscape architects



Uninvolved residential dwelling R47- Existing view north to east. Photo coordinate Easting:680217 Northing:6163011 (MGAz55)



Uninvolved residential dwelling R47- Proposed view through 100°. Approximate distance to closest visible Rye Park wind turbine 1,100 m

Notes

Composite panorama photograph taken with a Nikon D90 digital SLR camera with 50 mm prime lens.

Individual panorama photograph coordinate map datum is MGAz55 to ± 5 m.

Extent of potential wind turbine visibility and directional bearing illustrated on each photomontage is indicative only.

The Nikon D90 digital SLR camera has a crop factor of 1.6. A single photograph taken with a 50mm lens will result in a view angle equivalent to a single 35mm SLR camera photograph taken with a 75mm lens.

Refer Figure 28 for residential dwelling locations

Indicative extent of a single frame photograph (in landscape format) taken with the Nikon D90 digital SLR camera with a 50mm lens



RYE PARK WIND FARM

Uninvolved residential dwelling photomontage R47

EPURON

Rye Park Wind Farm Pty Ltd

GREEN BEAN DESIGN

landscape architects