

Details for CCC meeting No 3**Venue:** Yass Valley Council Chambers**Address:** 209 Comur Street, Yass**Date:** Wednesday 24 October 2012**Time:** 12.30pm to 2.30pm**EPURON**

**Rye Park Wind Farm
Community Consultation Committee
Meeting No 3
24 October 2012**

Agenda for CCC Meeting No 3

1. CCC membership update
2. Project development status
3. Review of CCC meeting No 2
4. Project consultation update
5. Current project information
6. Next steps

Community Consultation Committee – Membership Update

- **Independent chairperson;**
 - Nic Carmody
- **Involved landowners;**
 - Graham and Margaret Privett
 - Greg Medway
- **Uninvolved landowners;**
 - Jenny and Chris Hally
 - Bev and Alex Davis
- **Other, local Group or association;**
 - Geoffrey Minchin (interested party and employed by Boorowa CMA)
- **Local councils;**
 - Mayor Wendy Tuckerman – Boorowa Council
 - Councillor James Wheelwright – Upper Lachlan Council
 - Councillor David Needham – Yass Council
- **Epuron**
 - Brian Hall – Senior Project Manager

Rye Park Wind Farm – Current Development Status

- NSW Government changed EA lodgement deadline to 30 November 2012 latest
- New 80m wind monitoring mast to be installed on site next month (total of 5 masts)
- Proposed final version of wind farm layout prepared and available (126 turbines)
- Layout incorporates consultation feedback and results of expert studies
- 33 photomontages prepared including requested landowner houses within 2km
- Recent meeting held with Transgrid to progress grid connection application
- Wind farm powerline voltage amended from 132kV to 330kV (optimised design)
- EA document prepared and under final review prior to lodgement in November
- Consultation and interaction with the community is ongoing
- Project details available at website www.epuron.com.au/projects/rye-park

Review of information provided at CCC Meeting No 2

- 1. Review of key information and issues from meeting No 1**
- 2. Community consultation committee update**
 - Membership update
 - Minutes of last meeting
- 3. Current project development status**
- 4. Project consultation**
 - Newsletter No 5
 - Public Open Day
 - Key consultation activity and timetable
- 5. Project information**
 - Layouts
 - Archaeology & Heritage
 - Traffic and Transport
 - Community Fund
 - Likely Benefits
 - Grid connection update
- 6. Next steps and timing**

CCC Meeting No 2 - Summary of Key Feedback and Actions

o Interference to satellite services (ie. local TV reception and internet)

- A detailed communications study has been undertaken for the project and will be provided in the publicly exhibited EA.
- The study assessed existing communication services including radio, microwave, TV, satellite and mobile phone infrastructure.
- Wind farm has been designed to accommodate existing communication services and not predicted to be impacted by wind farm (some turbines moved or removed).
- Satellite services are not subject to the same topographic screening that can affect the traditional land based TV, phone and radio transmission infrastructure.
- Due to the distance of residences from the wind farm it is very unlikely that satellite based services would be subject to any interference due to the wind farm's operation as the wind turbine would have to be within the line of sight from the antenna to the satellite.

CCC Meeting No 2 - Summary of Key Feedback and Actions....continued

o Response to negative points expressed at public open day

- Potential to impact **property values** – NSW Valuer General report states property values are not negatively affected by wind farms. Full report available.
- Possible **health** impacts – NHMRC study states there is no published scientific evidence to support adverse effects of wind turbines on health. Full report available.
- Wind turbines are **noisy** – Strict noise compliance guidelines apply to the design, development and operation of wind farms in NSW.
- Will I see **turbines** from my house – Depending on where you live and the orientation of your house it is likely you will see some wind turbines. A photomontage has been prepared for uninvolved houses located within 2km of a turbine (where approved by the landowner).
- **Bango** wind farm is near my house – Cumulative impacts are considered as part of the EA process (Epuron is not the developer of this project).

CCC Meeting No 2 - Summary of Key Feedback and Actions....continued

o **Traffic and Transport Report**

- A copy of the Traffic and Transport Report has been provided to all 3 local councils. Follow up discussions and or meetings have taken place with councils and comments incorporated where appropriate. Further comments can also be made during public exhibition process.

o **Contact North Yass Fire Service**

- Contact has been made with Peter Alley at NYFS to discuss the project.

o **Identify local fire representative**

- As above and ongoing.

o **NSW Valuer Generals Report**

- A copy has been forwarded to JH as requested.

o **Upload current information to website and circulate CCC minutes**

- Completed.

Project Consultation – Newsletter No 6

o Released 22 August 2012

o Information included;

- Latest news & project development update
- Incorporation of feedback and study results into the proposed final layout
- Results of archaeological and heritage field survey
- Update on CCC activity
- Outcome of the public open day held at Rye Park hall
- Consultation feedback on community fund
- Announced release of traffic and transport report
- Reminder of contact details for project feedback

EPURON

Rye Park Wind Farm

Project Update No 6 | August 2012

Project Update

It has been a busy and productive few months for the development of the wind farm. We have been incorporating findings from our specialist studies, including consultation feedback from the community, into the design of the wind farm. We anticipate a final draft layout of the wind farm will be prepared and released in the coming months. The environmental assessment document is currently being prepared and is expected to be lodged with government for public exhibition later in the year.

Archaeological & Heritage Field Survey

Following consultation with 5 locally registered Aboriginal groups, our archaeological and heritage consultant completed a 9 day field survey during July and was assisted by the Buru Ngunawal Aboriginal Corporation. Preliminary results show the proposed impact areas to be of low archaeological and heritage significance, primarily due to their location on very rocky ridgelines, situated away from streams and rivers. A very low density of stone artefacts was found to be present on the site during the field survey (photo shown below).

Several milky quartz outcrops were recorded on the site that may have been historically exploited as sources of raw material. It has been recommended that impacts to these outcrop areas be avoided where possible during construction (photo shown below).



Public Open Day was a Success

Thank you to all those people who attended the wind farm public open day in Rye Park on 26 July. The open day was a great success with 51 people attending and viewing the project information on display, which included;

- Wind farm layout with 131 turbine locations.
- Seven photomontages: from selected public viewpoints.
- Traffic and transport route and access map.
- General wind farm and industry information.
- Other project and corporate information.

The majority of people who attended the open day (78%) were supportive of the project and the potential benefits available to the town of Rye Park and the local region. The opportunity to capture local jobs and investment expenditure was considered a key benefit of the project.

Members of the development team were pleased to discuss the project and answer your questions. The feedback received on the day will be considered in the design of the project wherever possible and we expect to release a final layout in the coming months.

Community Consultation Committee

The Community Consultation Committee (CCC) established for the project met again in Yass on 2 August. A few new members, both involved and uninvolved landowners, attended the meeting. The latest project information was presented and points discussed at the meeting included;

- Release of the traffic and transport plan for consultation
- Update and feedback on the potential for a community fund
- Feedback from the recent public open day
- Details for connecting the wind farm to the electricity grid

Project details can be found at www.epuron.com.au/project/rye-park/

Please send us your feedback

Write to us: Rye Park Wind Farm Level 11, 75 Miller Street North Sydney NSW 2060	Email or Internet: b.hall@epuron.com.au www.epuron.com.au	Phone us: 02 9456 7400
---	---	---------------------------

EPURON

Rye Park
Wind Farm

Project Update No 6 | August 2012

Community Fund

We would like to thank everyone who has contributed their feedback to us regarding the potential to establish a community fund for the project. Over the past few months we have been consulting and seeking feedback on how best to establish a community fund and to identify what type of local support is required from the project. The following is a summary of the key feedback we received on these two points and will be considered during the preparation of the project's environmental assessment that will be publicly exhibited later in the year.

1. Feedback received.....How best to establish a community fund

- Local councils prefer that if a community fund is established it is managed by them.
- Local community wants to have a say in where and how any community funds are managed and spent.
- Draft NSW Wind Guidelines say community infrastructure contributions may be required under Part 4, Division 6 of the EP&A Act 1979, or through a voluntary planning agreement (VPA) with a planning authority, including council.
- Community funds for some other projects have been considered through a mechanism that combines involvement from representatives of both the local community and council.

2. Feedback received.....Identify what type of local support is required from the project

- Upgrade and improve local roads near the project.
- Improvements to the township of Rye Park and better local amenities.
- Better mobile phone reception and internet services in the town.
- Chance to reopen some businesses and local services in Rye Park.
- Community must "go deeper" and provide attraction to keep families and younger people in the area through long term benefits and job creation



Traffic and Transport Report

The traffic and transport report for the project has been released for consultation. A copy of the report can be found on our website and the report assesses the;

- Traffic and transport issues relevant to the construction & operation of the wind farm.
- Implications of the project and potential impacts.
- Proposed mitigation measures to minimise related impacts.
- Maximum traffic impacts predicted during construction from heavy and oversized vehicles delivering equipment and material.
- Public road network proximate to the project.

Key issues addressed by the report include;

- Suitability of the existing roads for the type of heavy and oversized vehicles that will need to access the site (road type, width, radius of bends etc).
- Structural capacity of existing roads and structures, such as bridges, to handle the heavy and oversized vehicles for the delivery of equipment and materials.
- Disturbance to the local community as a result of increased vehicle movements.
- Management of traffic on the site including traffic safety, minimising ground disturbance, erosion and dust.



Project Consultation – Key Activity and Timetable

Activity	Timing	Objectives	Stakeholders	Status
Community information workshop	November 2008	Introduce Epuron and the proposal to landowners and community including preliminary layout	Involved landowners and selected stakeholders	Completed
Newsletter 1	December 2009	Inform community about project and initial information	Involved and uninvolved landowners (mail-out)	Completed
Newsletter 2	June 2010	Provide updated information and planning details including	Involved and uninvolved landowners (mail-out)	Completed
Newsletter 3	December 2011	Outline planning process and updated development progress	Involved and uninvolved landowners (mail-out)	Completed
Consult with neighbours within 2km	January / February 2012 (ongoing)	To discuss project and impacts with neighbours including feedback	Uninvolved neighbours within 2km of turbine	Completed (but ongoing)
Newsletter 4	March 2012	Advise consultation plans and release revised wind farm layout	Involved and uninvolved landowners (mail-out)	Completed
Establish Community Consultation Committee	April / May 2012	Establish formal mechanism for community participation	Invited members	Completed

Project Consultation – Key Activity and Timetable.....continued

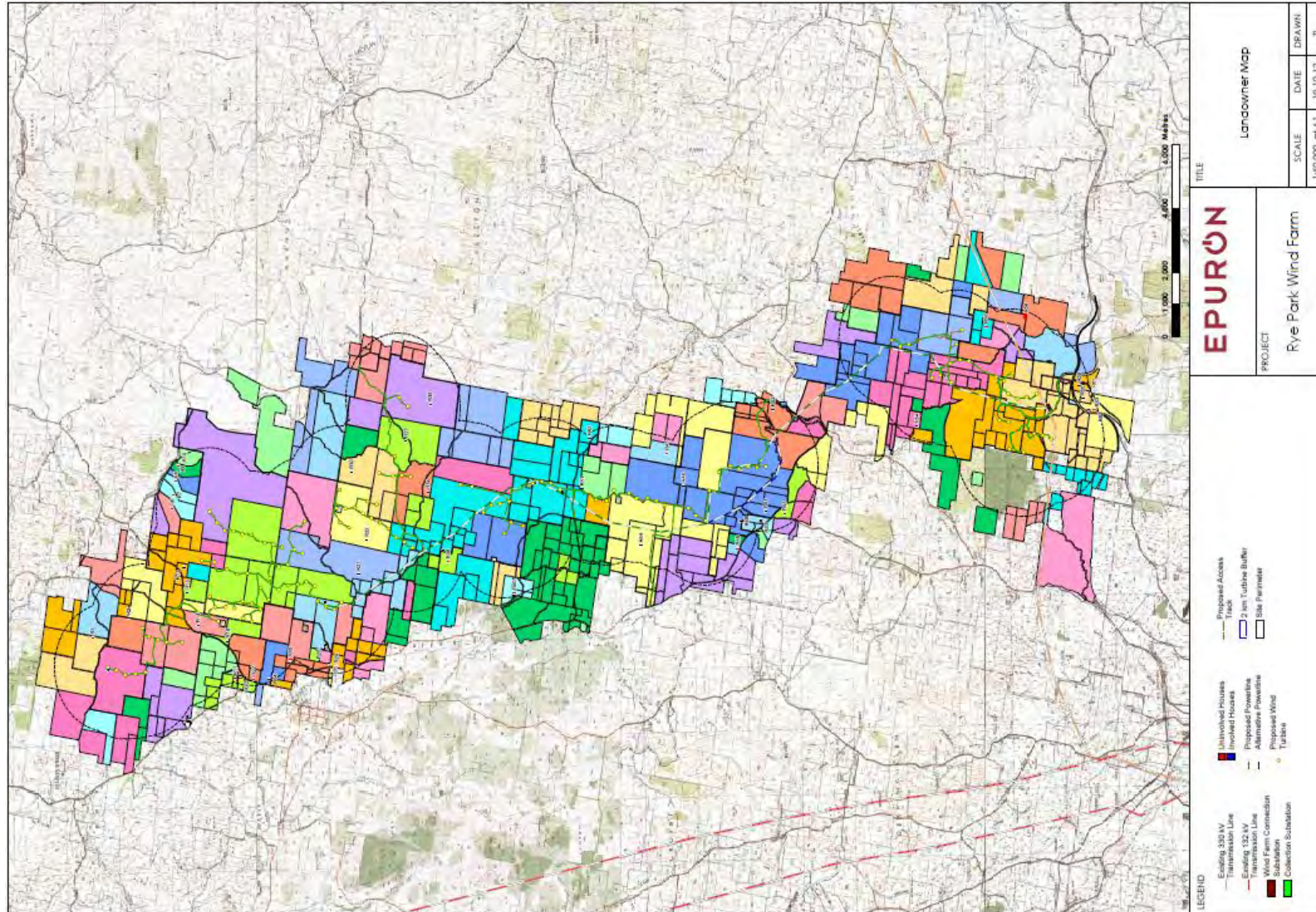
Activity	Timing	Objectives	Stakeholders	Status
CCC Meeting 1	May / June 2012	Provide project information and seek feedback	Invited members	Completed
Newsletter 5 and Community Open House 1	June / July 2012	Update on studies and consultation and layout	Involved and uninvolved landowners (mail-out)	Completed
CCC Meeting 2	July / August 2012	Provide updated information and consider feedback including release of draft final layout	Invited members	Completed
Newsletter 6	September / October 2012	Update on studies and consultation feedback contributing to draft final layout	Involved and uninvolved landowners (mail-out)	Completed
CCC Meeting 3	September / October 2012	Review of draft final layout incorporation feedback	Invited members	Wednesday 24 October 2012
Newsletter 7 (optional can be wrapped into open day)	October / November 2012	Advise community of final layout incorporating feedback and study results	Involved and uninvolved landowners, CCC and consultants	pending

Project Consultation – Key Activity and Timetable.....continued

Activity	Timing	Objectives	Stakeholders	Status
Pre DA lodgement finalisation and follow up	October / November 2012	Consider feedback and any final amendments required prior to lodging application	Involved and uninvolved landowners, CCC and consultants	pending
Lodgement of EA with DP&I	November 2012	Submit EA	DP&I	pending
Community Open Day	December 2012	Inform community of EA lodgement and exhibition	Involved and uninvolved landowners, CCC and consultants	pending

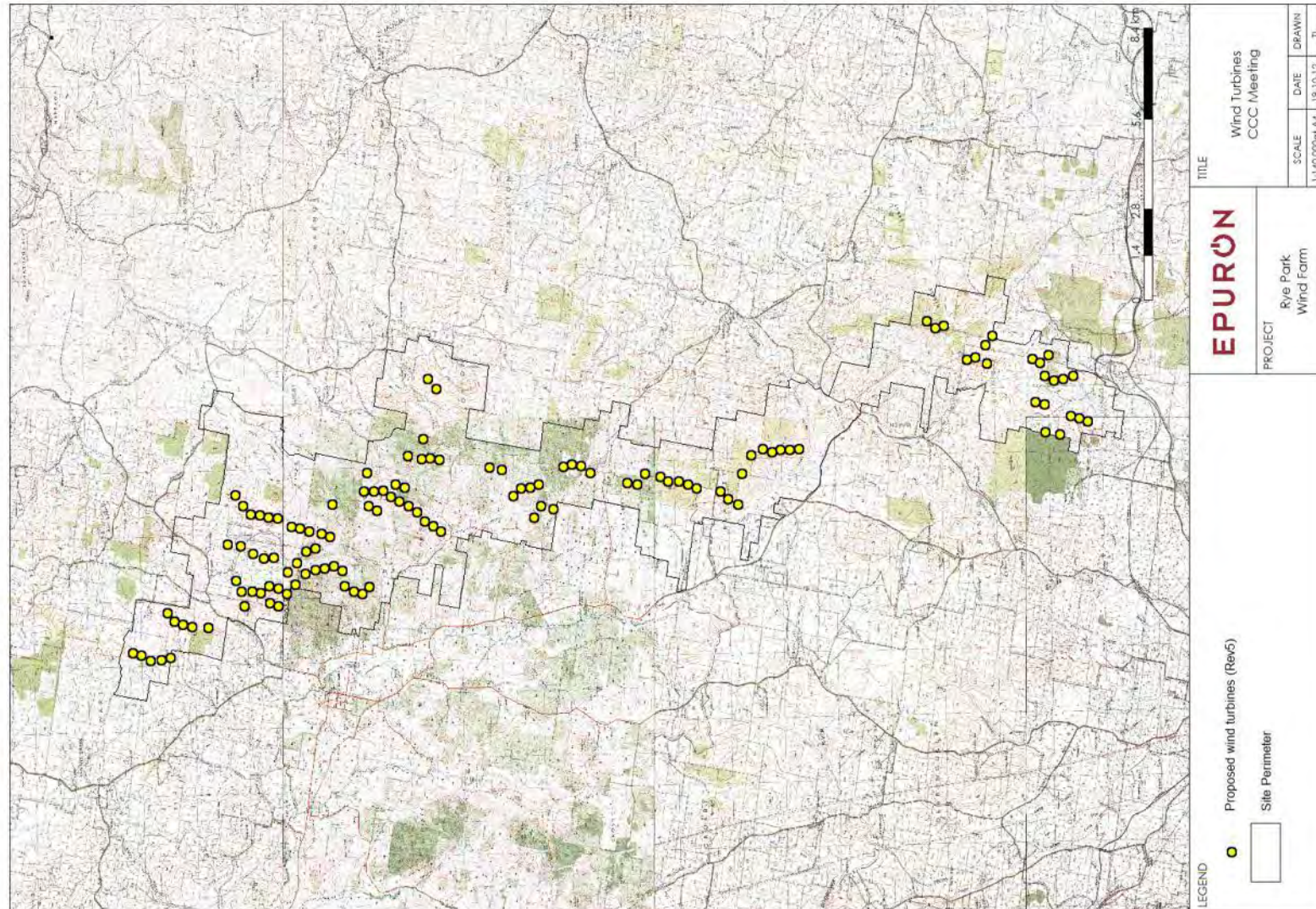
Project Information – Proposed final wind farm layout

- Layout accommodates 126 turbines
- Incorporates consultation feedback and study findings



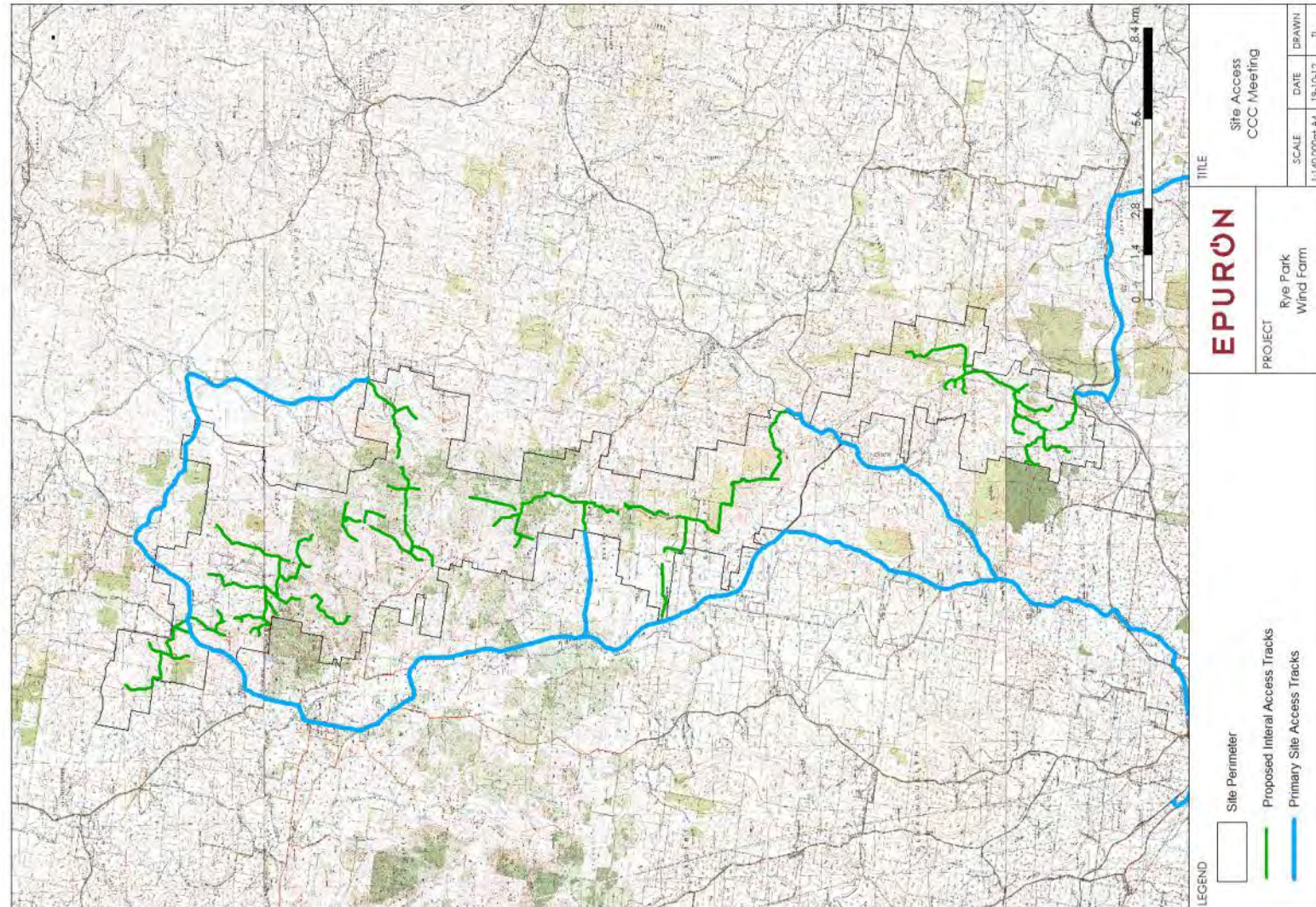
Project Information – Turbines

- Layout accommodates 126 turbines
- Some turbines have been moved or removed to accommodate feedback and or study findings



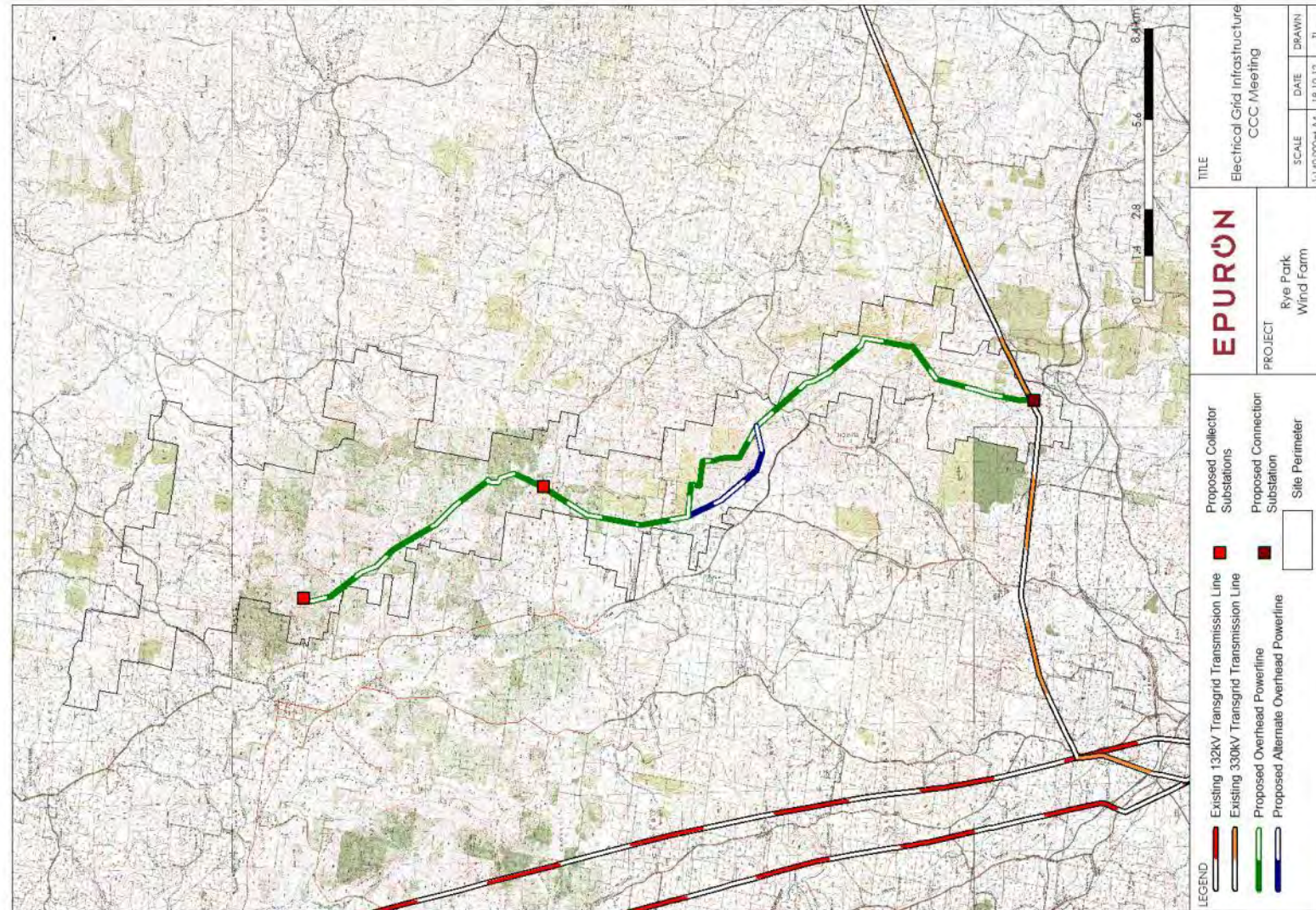
Project Information – Access Roads

- Main access roads (blue)
- Internal access tracks (green)
- Updated to incorporate feedback from councils where provided



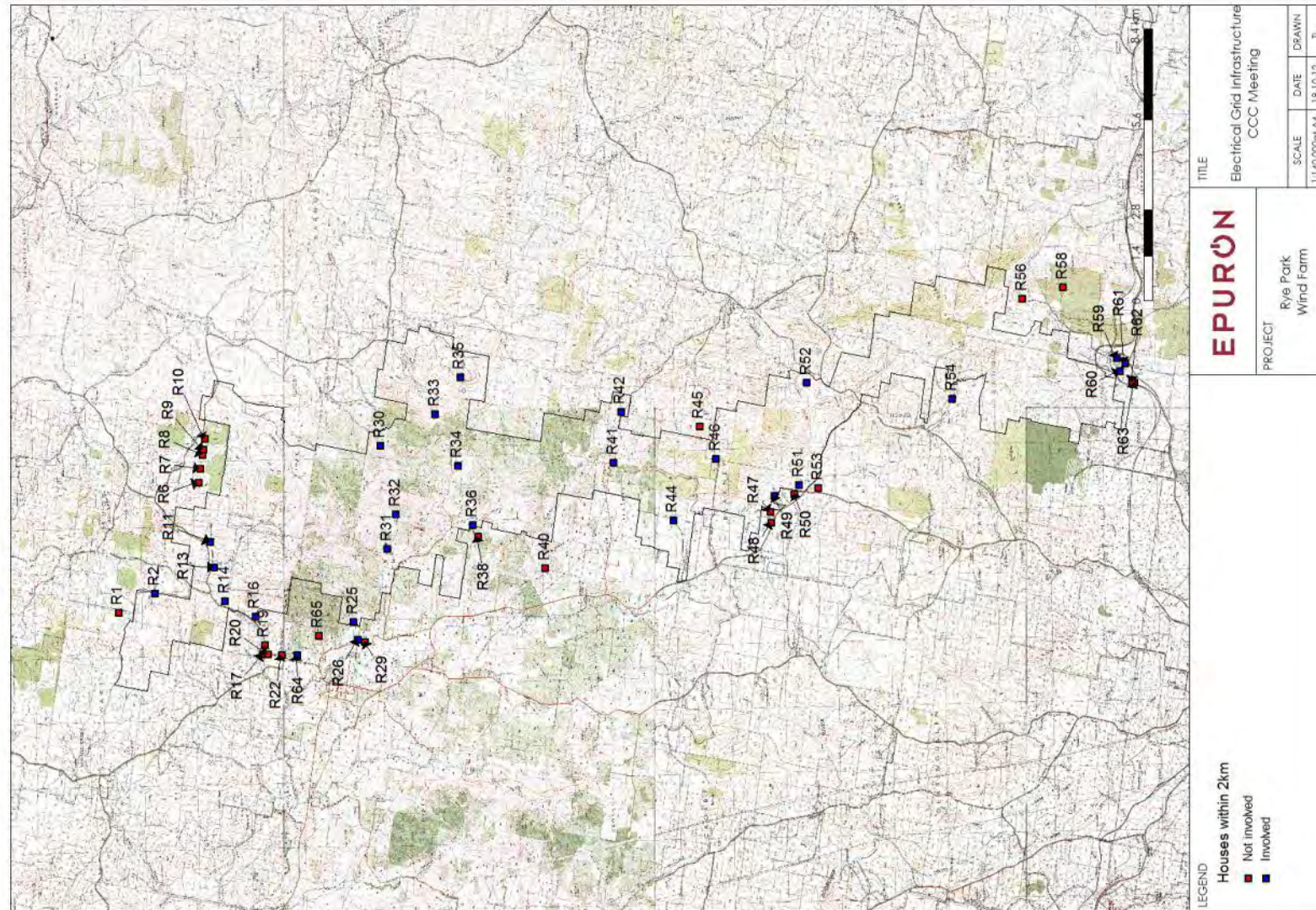
Project Information – Electrical Infrastructure

- Wind farm connects to existing Transgrid 330kV transmission line
- New powerline up to 330kV running up wind farm site
- New 330kV connection substation at existing transmission line
- New collection substations on wind farm

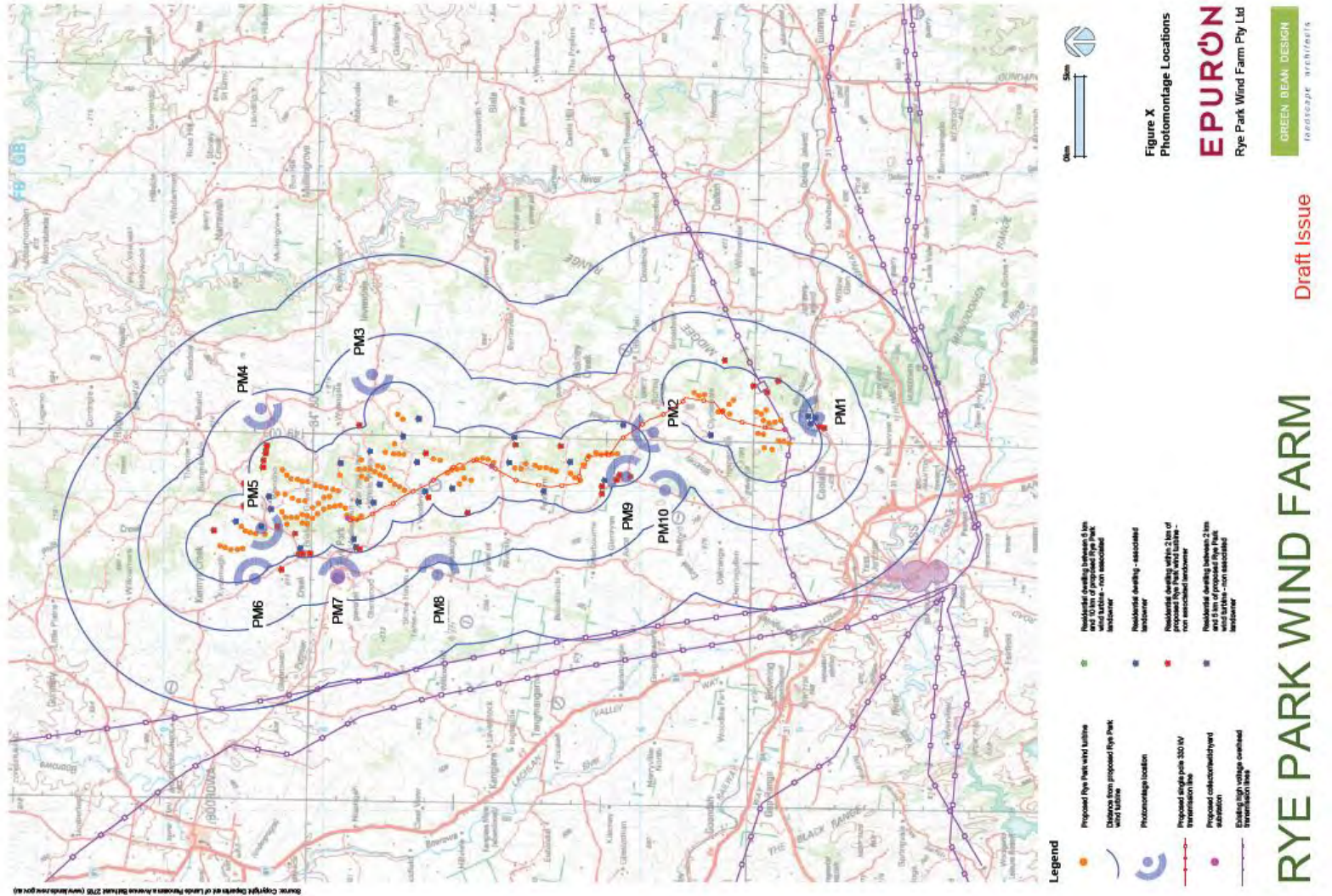


Project Information – Houses

- Uninvolved house locations within 2km of a wind turbine (red)
- Involved house locations (blue)



Project Information – Photomontages (public locations)



Project Information – Photomontages (public location PM7)

Figure X Public photomontage PM7, Rye Park - Kershaw Street



Public view location PM7 Rye Park - Existing view north to south east. Photo coordinate Easting:674899 Northing:6178817 (MGAz55)



Public view location PM7 Rye Park - Proposed view north to south east (Approximate distance to closest visible wind turbine 3.9 km), Photo coordinate Easting:674899 Northing:6178817 (MGAz55)

Notes

Individual panorama photos taken with a Nikon D700 digital SLR camera with 50 mm prime lens.

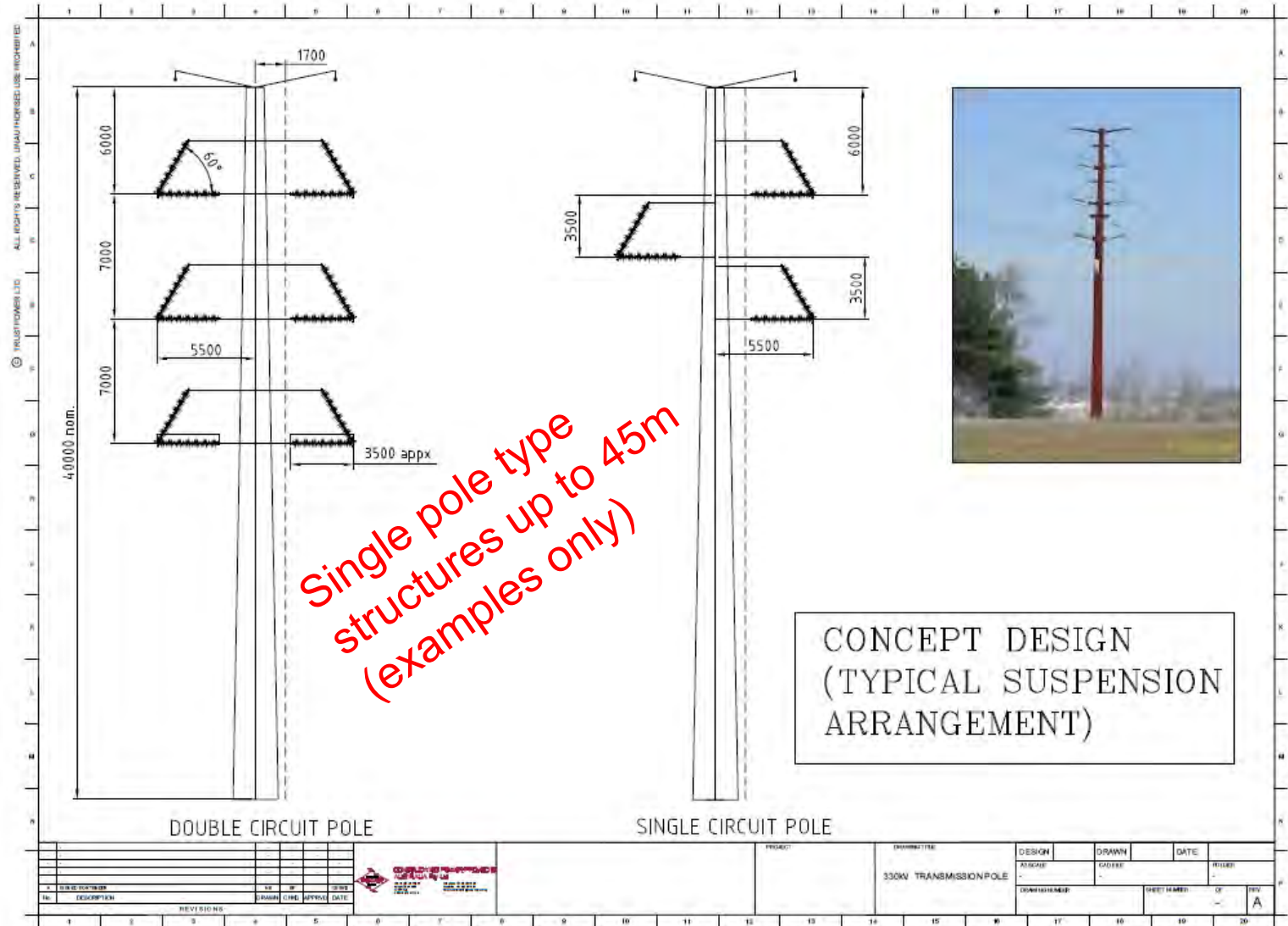
Individual panorama photo coordinate map datum is MGAz55 to a 5 m.

Extent of potential wind turbine visibility and directional bearing illustrated on each photomontage is indicative only.

Project Information – Grid Connection Update

- Meeting was held recently with Transgrid to progress the grid connection application process and technical studies.
- Wind farm will connect into the existing 330kV Transgrid transmission line that crosses the southern section of the site.
- New 330kV connection substation will be located adjacent to the existing Transgrid transmission line at the south of the site. A land parcel has been identified.
- New overhead powerline (up to 330kV) will run up the length of the wind farm site to collect generated power and will be mounted on a single pole type structure.
- New collection substations will be constructed on the wind farm site.
- Power generated by the wind turbines will be reticulated to the new collection substations via an underground electrical network.

Project Information – New Powerline Poles (up to 330kV)



Project Information – Community Fund

Epuron has been seeking feedback on how to best establish a community fund and to identify what type of local support is required from the project.

1. **Feedback.....”how to best establish a community fund”**

- Councils prefer that if a community fund is established it is managed by them.
- Community wants to have a say in where/how any community funds are spent.
- Draft Wind Guidelines say community infrastructure contributions may be required.

2. **Feedback.....”what type of local support is required from the project”**

- Upgrade and improve local roads near the project
- Improvements to the township of Rye Park and better local amenities
- Better mobile phone reception and internet services
- Chance to reopen some businesses and local services in Rye Park
- Attracting new families to live in the local area

3. **Key Issues**

- When / whether the developer makes a commitment to a fund or structure
- How much the fund should be
- Who should administer the fund
- What the fund should be used for

Project Information – Community Fund.....continued

Outline of Epurons Position

- Epuron designs its wind farms to minimise impacts to the environment and local community.
- Each project should be assessed (by DPI) specifically on its merits (no cash fund influences).
- Epuron strongly believes in the value of community contributions and believes that the final investor who will commit funds to the construction and operation of the project should engage with the community in a meaningful way.
- Epuron believes that such community contributions should be:
 - applied towards local environmental, social and community initiatives led by local residents;
 - directed to initiatives raised by residents proximate to the development or likely to be impacted;
 - established at the commencement of operation and continue for the life of the development; and,
 - regularly reviewed to ensure they are providing ongoing benefits to the community.
- Epuron considers that the CCC working with the developer and ultimate project owner, is ideally placed to help develop a community fund and its administration process.
- Epuron, like most wind farm proponents, is not the ultimate project owner and accordingly it is not appropriate for Epuron to determine the final details of any community fund, and nor should these be determined as part of a development application or consent process.
- Accordingly, Epuron will not propose any specific amount payable to any community fund in its development application. However, it will commit to an ongoing consultation process to determine an appropriate basis for the establishment of a community fund.
- The EA's Statement of Commitments will set out the Community Fund details

Next Steps and Timing

- Consultation and feedback - Ongoing
- Finalise EA document - October / November
- Newsletter 7 (optional) - November
- Lodge EA with government - By end November
- Community open day - December
- Public exhibition of EA - TBC

Communication and Feedback Channels Available

- Consultation is a two-way-street and we're always listening.
- Feedback and suggestions are important to us and help design the project.
- Available communication channels include;
 - Epuron corporate website: www.epuron.com.au
 - Rye Park project website: www.ryeparkwindfarm.com.au
 - Mailing address: Rye Park Wind Farm
Level 11, 75 Miller Street
North Sydney...NSW...2060
 - Phone: 02 8456 7400
 - Fax: 02 9922 6645
 - Email: RyePark@epuron.com.au
 - Senior Project Manager: Brian Hall
b.hall@epuron.com.au
 - Meetings Arranged by appointment

Thank You



Ti Tree solar project - NT

EPURON Pty Ltd

75 Miller Street
North Sydney
NSW 2060
AUSTRALIA

T +612 8456 7400
F +612 9922 6645

www.epuron.com.au



Cullerin range wind farm - NSW

Details for CCC meeting No 4

Venue: Yass Valley Council Chambers

Address: 209 Comur Street, Yass

Date: Monday 17 December 2012

Time: 12.30pm to 2.30pm

EPURON

Rye Park Wind Farm

**Community Consultation Committee
Meeting No 4**

17 December 2012



Presentation Contents for CCC Meeting No 4

1. CCC membership update
2. Project development status
3. CCC meeting No 3 action items
4. Project consultation update
5. Current project information
6. Next steps and timing
7. Communication and feedback channels

Community Consultation Committee – Membership Update

- **Independent chairperson;**
 - Nic Carmody
- **Involved landowners;**
 - Graham and Margaret Privett
 - Greg Medway
- **Uninvolved landowners;**
 - Jenny and Chris Hally
 - Bev and Alex Davis
- **Other, local Group or association;**
 - Geoffrey Minchin (interested party and employed by Boorowa CMA)
- **Local councils;**
 - Mayor Wendy Tuckerman – Boorowa Council
 - Councillor James Wheelwright – Upper Lachlan Council
 - Councillor David Needham – Yass Council
- **Epuron**
 - Brian Hall – Senior Project Manager

Rye Park Wind Farm – Current Development Status

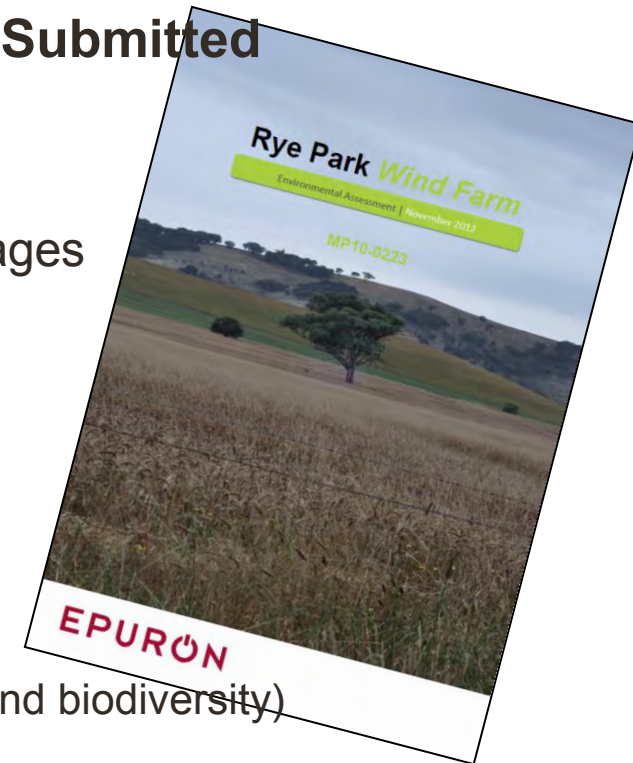
- NSW Government changed EA lodgement deadline to 30 November
- EA submitted to Department of Planning & Infrastructure on 23 November for review
- Expect EA to be publicly exhibited by DPI early in the new year (DPI to set dates)
- EA layout of wind farm accommodates 126 turbines and associated infrastructure
- Layout incorporates consultation feedback and results of expert studies
- Photomontages at houses within 2km have been distributed to landowners
- Overhead powerline voltage up to 330 kV on single pole type structure to 45 m high
- New 80 m wind monitoring mast has been installed on site (total of 5 masts)
- Consultation and interaction with the community is ongoing
- Project details available at website www.epuron.com.au/projects/rye-park

CCC Meeting No 3 - Summary of Epuron Action Items

- **Update contractor database**
 - Database was updated to include details of local contractor, Keiren Bellew, who attended meeting 3 and stated an interest in wind farm construction work.
- **Circulate minutes and agenda prior to each meeting**
 - Complete and ongoing.
- **Forward letter from A&B Davis to Yass RFS for reply**
 - Received letter regarding concern for fire risk and forwarded to Yass RFS. Following up for reply.
- **J&C Hally photomontage**
 - Epuron offered specialist consultant to contact the Hally's to discuss concerns with their photomontage. Offer not taken up at this stage. Final version of photomontage has been forwarded with recent letter.
- **Contact local Historical Society for water bore locations**
 - Work in progress.
- **Upload current information to website and circulate CCC minutes**
 - Completed.

Project Consultation – Environmental Assessment Submitted

- EA submitted to DPI 23 November
- EA published in two volumes and runs to around 1,100 pages
- EA document includes;
 - Project details, setting and context
 - Response to DGR's
 - Results of assessments and investigations
 - Reports from specialist consultants (visual, heritage, noise and biodiversity)
- EA currently undergoing adequacy assessment
- Public exhibition expected in the new year by DPI and dates TBA
- Submissions and feedback will be requested during exhibition
- Final assessment and determination expected mid next year



Project Consultation – Photomontage to Landowners

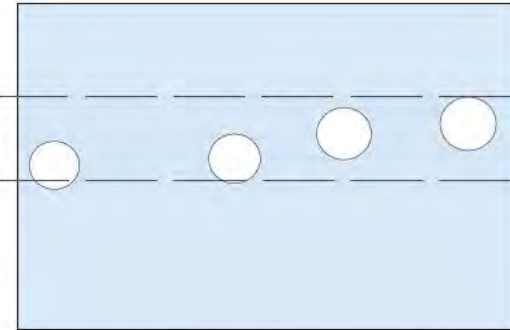
- All photomontages for dwellings located within 2 km of a proposed turbine have been prepared and forwarded to landowners
- Cover letter sent to landowners which advised and included;
 - Copy of photomontage from dwelling (before and after) printed on colour A3 size
 - Photomontages form part of the wind farm EA submission
 - Outlined process and methodology for preparing photomontages
 - Provided photomontage details including location, bearing and distance to nearest turbine
 - Provided details and illustrative figure of comparative wind turbine assessment to validate photomontage accuracy
- In some instances photomontage demonstrated landowner views toward the wind farm were blocked by hills and trees and the wind turbines may not be visible

Project Consultation – Photomontage Validation



Proposed Rye Park wind farm photomontage.

Public view location PM 4 Maryvale Road - Existing view south south west to north west.
 Photo coordinate Easting:684522 Northing:6183167 (MGAz55) Approximate distance to closest visible wind turbine 3,900 m
 Composite panorama photograph taken with a Nikon D700 digital SLR with a 50mm lens (equates to a 35mm SLR camera with a 50mm lens).

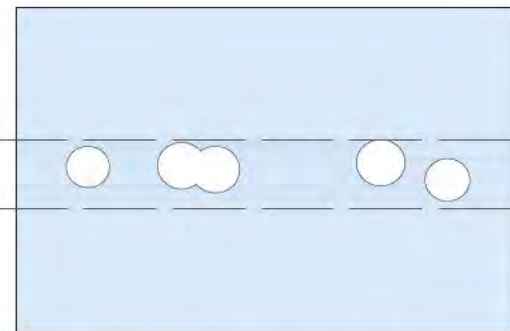


Rye Park wind turbine photomontage- comparative rotor swept area
 Wind turbine 152 m tip height (101 m tower with 56 m rotor length)



Existing view toward the operational Gunning wind farm from Gunning Road.

Existing view north east to east. Photo coordinate Easting:711091 Northing 6157317 (MGAz55). Approximate distance to closest visible wind turbine 4,200 m
 Composite panorama photograph taken with a Nikon D700 digital SLR with a 50mm lens (equates to a 35mm SLR camera with a 50m lens).



Gunning wind turbine photograph- comparative rotor swept area
 Wind turbine 120 m tip height (80 m tower with 40 m rotor length)

Figure 63
 Comparison of operational and photomontage wind turbines

Quality assurance procedures: Rye Park proposed wind farm

Project Consultation – Photomontage View Distances

Existing Cullerin wind turbines



Photo 1 - View toward operational Cullerin wind farm turbines

View distance to closest wind turbine is approximately 2.9 km. Height of wind turbine is approximately 125 m to tip of blade.

Single frame photo taken with a Pentax K10D digital SLR camera with a 50mm lens. The camera crop factor of 1.6 equates to a 35mm full frame SLR camera with a 75mm lens.

Proposed Rye Park wind turbines (photomontage)



Photo 2 - View toward proposed Rye Park wind turbines at reduced height of 124 m to tip of blade.

View distance to closest wind turbine is approximately 1.8 km. Height of wind turbine is approximately 124 m to tip of blade.

Single frame photo taken with a Nikon D90 digital SLR camera with 50mm lens. The camera crop factor of 1.6 equates to 35mm full frame SLR camera with a 75mm lens.

Existing Capital wind turbines



Photo 3 - View toward operational Capital wind farm turbines

View distance to closest wind turbine is approximately 1.5 km. Height of wind turbine is approximately 124 m to tip of blade.

Single frame photo taken with a Pentax K10D digital SLR camera with a 50mm lens. The camera crop factor of 1.6 equates to 35mm full frame SLR camera with a 75mm lens.

Existing Capital wind turbines

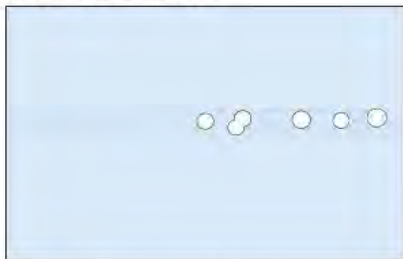


Photo 4 - View toward operational Capital wind turbines.

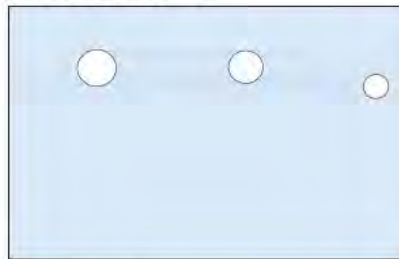
View distance to closest wind turbine is approximately 1.0 km. Height of wind turbine is approximately 124 m to tip of blade.

Single frame photo taken with a Pentax K10D digital SLR camera with 50mm lens. Camera crop factor of 1.6 equates to 35mm full frame SLR camera with a 75mm lens.

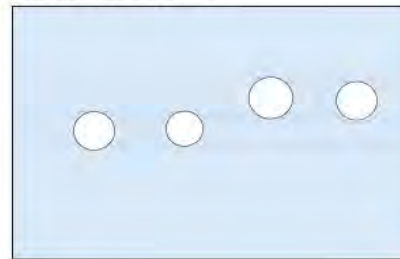
Rotor swept path area at 2.9 km



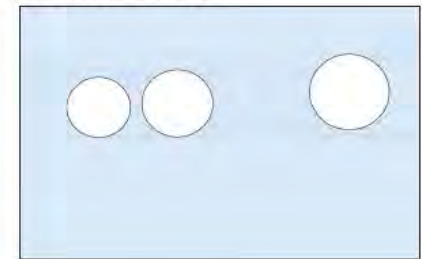
Rotor swept path area at 1.8 km



Rotor swept path area at 1.5 km



Rotor swept path area at 1 km



Relative comparison of distance effect on perceived wind turbine rotor swept path area




Relative comparison of distance effect on perceived wind turbine height

Figure 64
Comparison of operational and photomontage wind turbines

Project Consultation – Key Activity and Timetable

Activity	Timing	Objectives	Stakeholders	Status
Community information workshop	November 2008	Introduce Epuron and the proposal to landowners and community including preliminary layout	Involved landowners and selected stakeholders	Completed
Newsletter 1	December 2009	Inform community about project and initial information	Involved and uninvolved landowners (mail-out)	Completed
Newsletter 2	June 2010	Provide updated information and planning details including	Involved and uninvolved landowners (mail-out)	Completed
Newsletter 3	December 2011	Outline planning process and updated development progress	Involved and uninvolved landowners (mail-out)	Completed
Consult with neighbours within 2km	January / February 2012 (ongoing)	To discuss project and impacts with neighbours including feedback	Uninvolved neighbours within 2km of turbine	Completed (but ongoing)
Newsletter 4	March 2012	Advise consultation plans and release revised wind farm layout	Involved and uninvolved landowners (mail-out)	Completed
Establish Community Consultation Committee	April / May 2012	Establish formal mechanism for community participation	Invited members	Completed

Project Consultation – Key Activity and Timetable.....continued

Activity	Timing	Objectives	Stakeholders	Status
CCC Meeting 1	May / June 2012	Provide project information and seek feedback	Invited members	Completed
Newsletter 5	June / July 2012	Update on studies and consultation and layout	Involved and uninvolved landowners (mail-out)	Completed
Community Open Day	June / July 2012		Involved and uninvolved landowners, CCC, consultants and public	Completed
CCC Meeting 2	July / August 2012	Provide updated information and consider feedback including release of draft final layout	Invited members	Completed
Newsletter 6	September / October 2012	Update on studies and consultation feedback contributing to draft final layout	Involved and uninvolved landowners (mail-out)	Completed
CCC Meeting 3	September / October 2012	Review of draft final layout incorporation feedback	Invited members	Completed
 Newsletter 7 (optional can be wrapped into open day)	October / November 2012 (December)	Advise community of final layout incorporating feedback and study results	Involved and uninvolved landowners, CCC and consultants	Pending

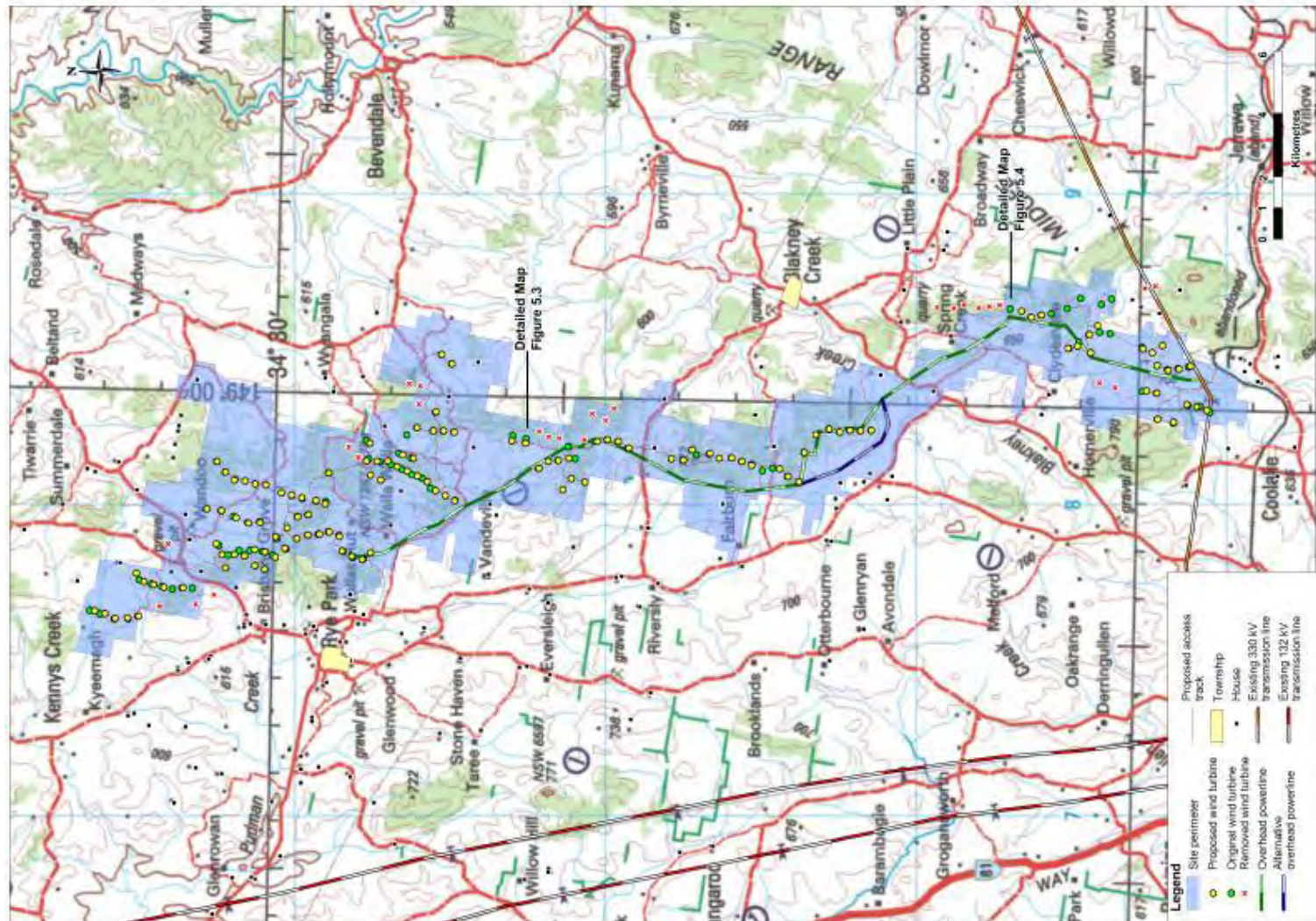
Project Consultation – Key Activity and Timetable.....continued

Activity	Timing	Objectives	Stakeholders	Status
Pre DA lodgement finalisation and follow up	October / November 2012	Consider feedback and any final amendments required prior to lodging application	Involved and uninvolved landowners, CCC and consultants	Completed
Lodgement of EA with DP&I	November 2012	Submit EA	DP&I	Completed
Community Open Day	December 2012	Inform community of EA lodgement and exhibition	Involved and uninvolved landowners, CCC, consultants and public	Pending



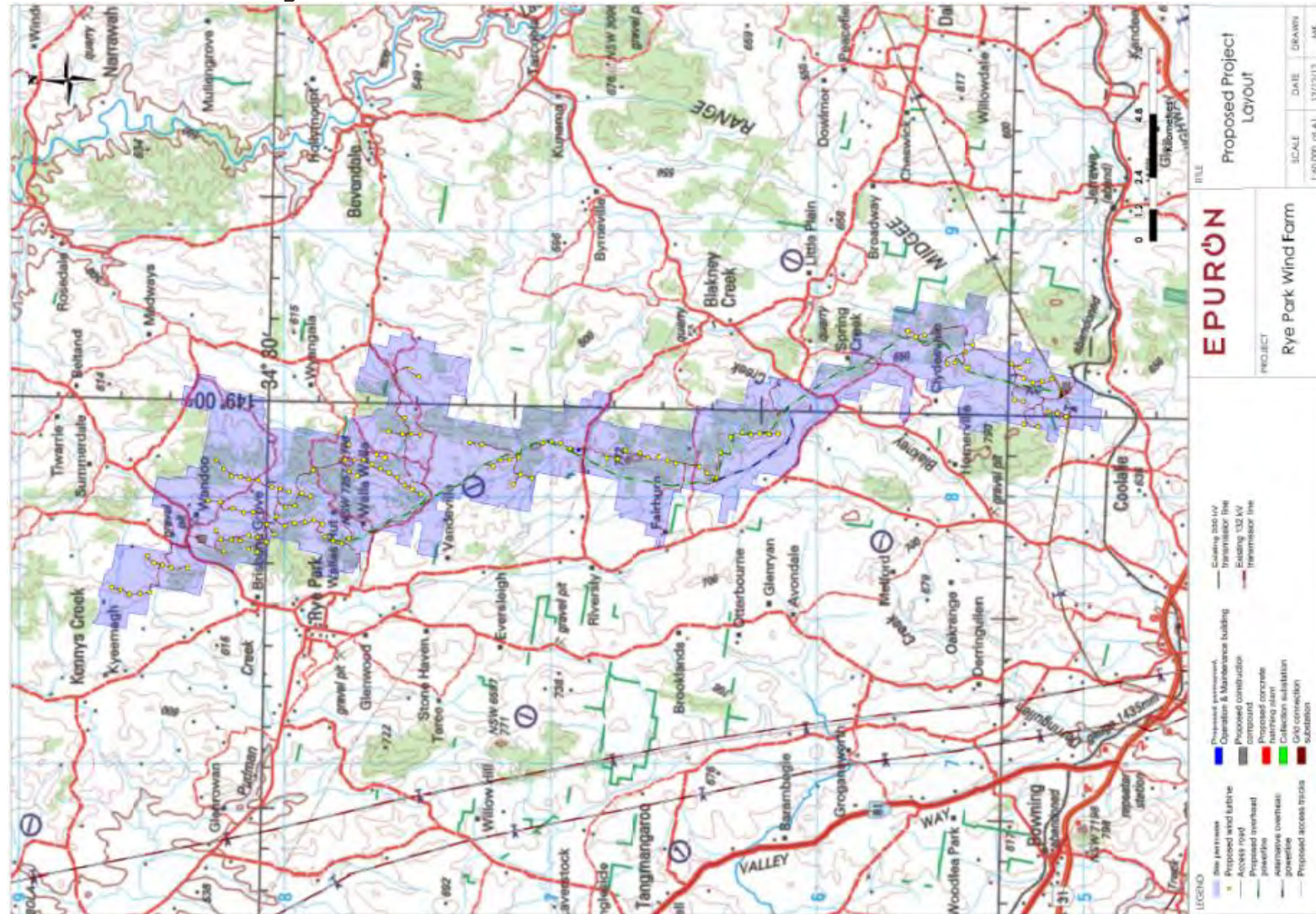
Project Information – Layout Revisions

- Design of wind farm layout has been through a number of iterations to optimise
- Some turbines have been moved or removed to accommodate community feedback and or study findings



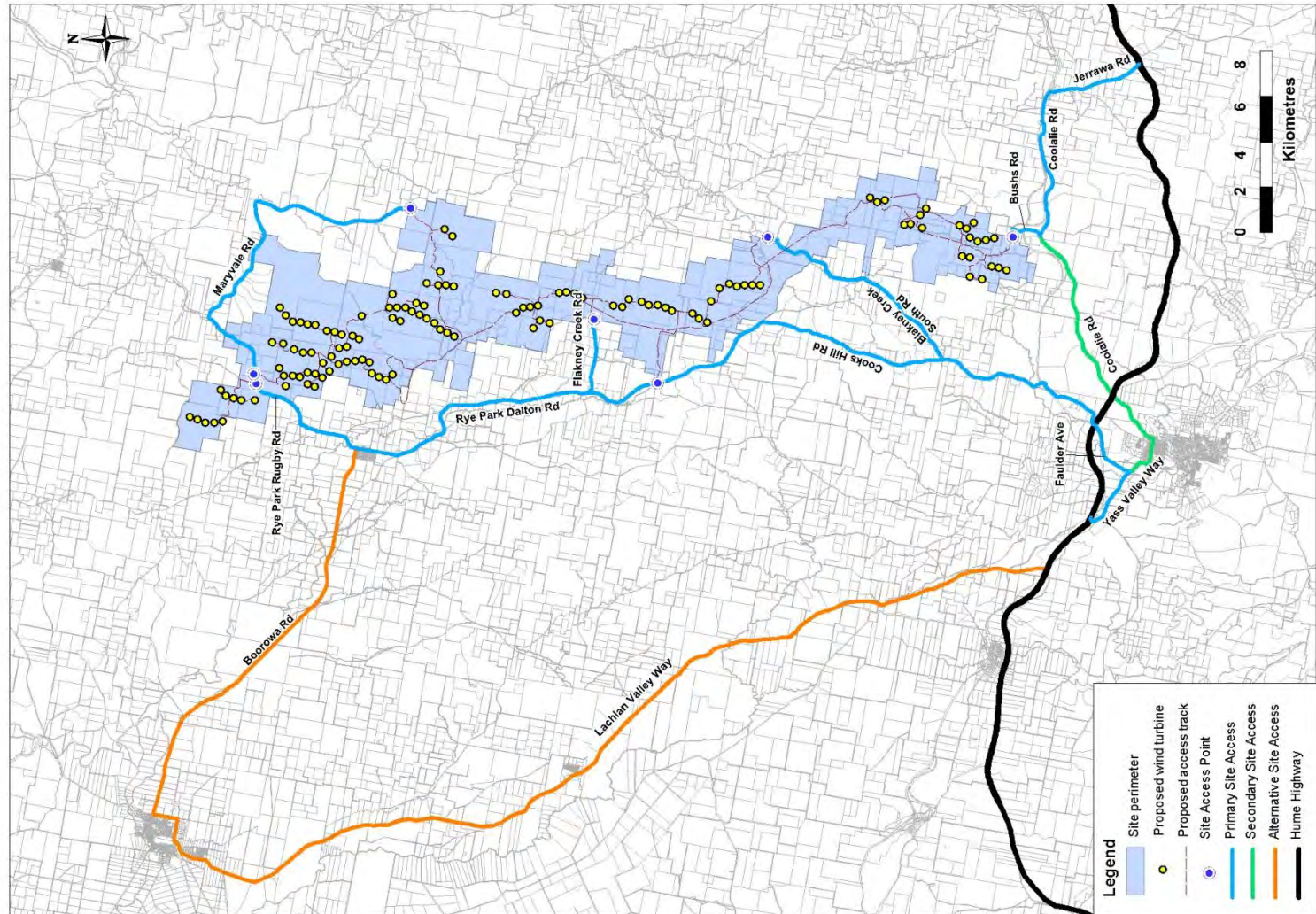
Project Information – EA Layout

- Layout accommodates 126 turbines
- Includes associated infrastructure such as;
 - Substations
 - Overhead powerlines
 - Access roads
 - Maintenance facilities
 - Permanent wind monitoring mast
 - Temporary construction facilities



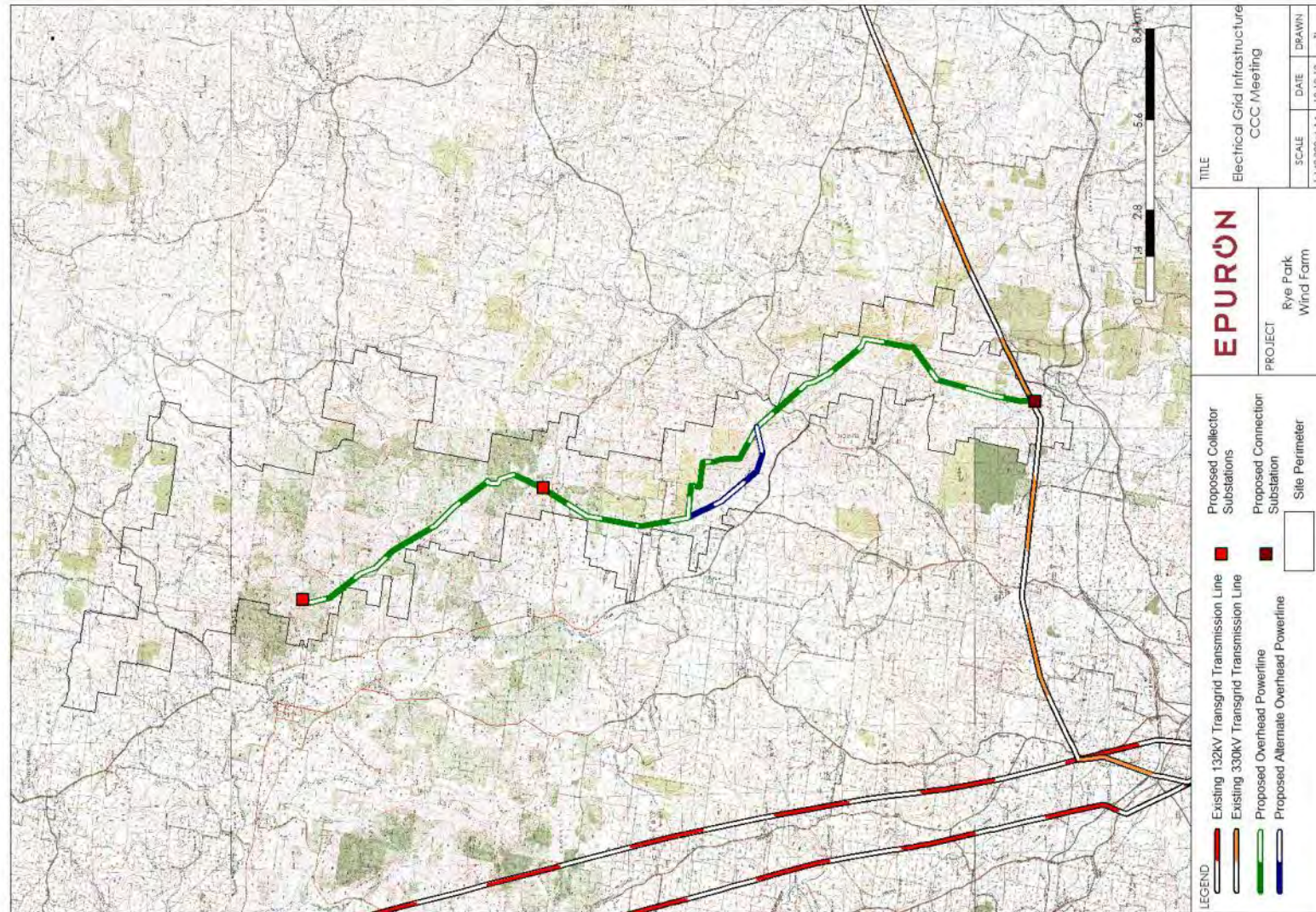
Project Information – Access Routes

- Primary site access (light blue)
- Alternative site access (orange)
- Secondary site access (green)
- Site access points (dark blue dots)
- Wind farm internal access tracks (purple)
- Hume Highway (black)



Project Information – Electrical Infrastructure

- Wind farm connects to existing Transgrid 330kV transmission line
- New powerline up to 330kV running up wind farm site
- New 330kV connection substation at existing transmission line
- New collection substations on wind farm

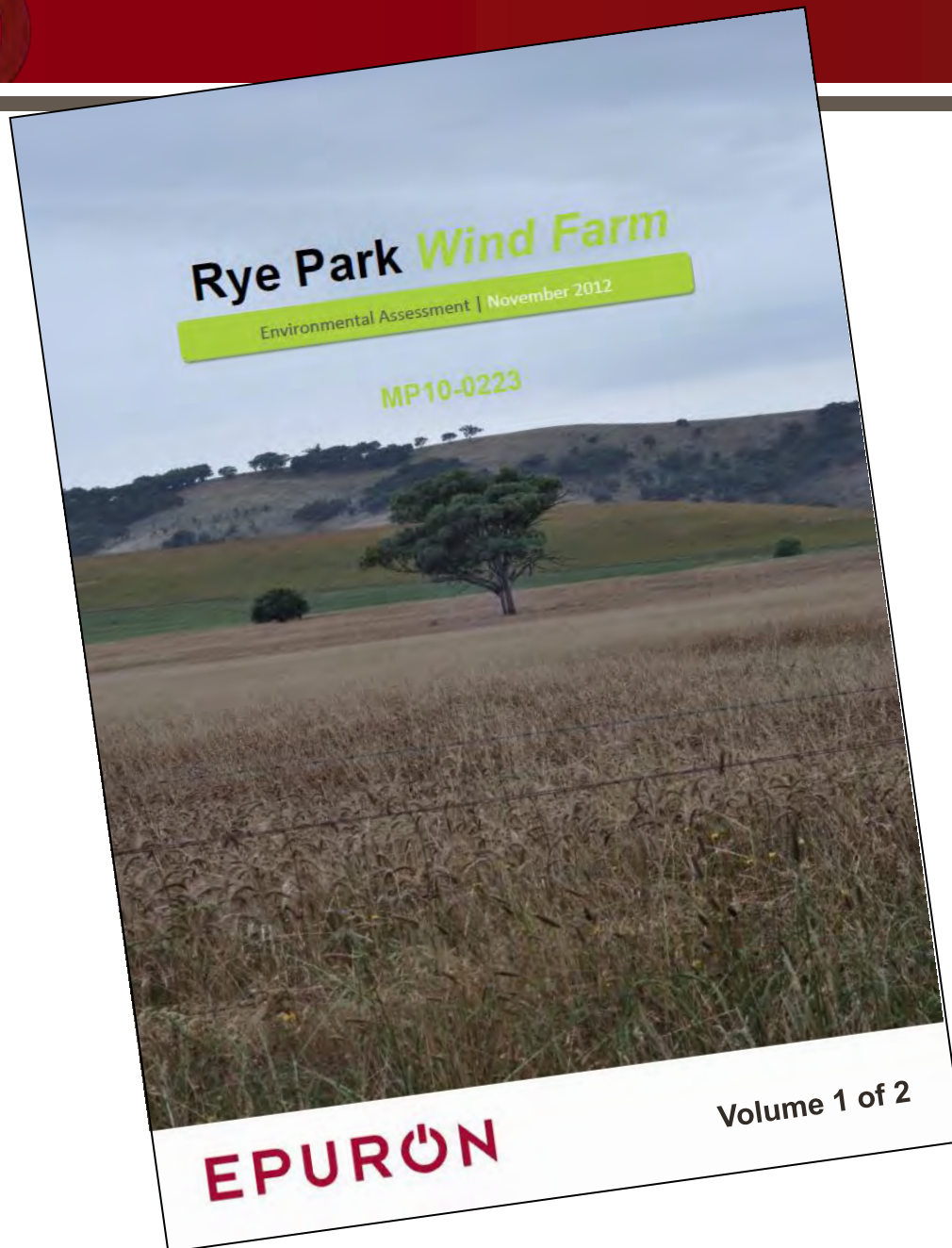


Next Steps and Timing

- DPI review of submitted EA - December / January
- Newsletter No 7 - January / February
- Community Open Day - February / March
- Public exhibition of EA - Dates to be confirmed by DPI
- Next CCC meeting - TBC (around March / April 2013)

Communication and Feedback Channels Available

- Consultation is a two-way-street and we're always listening.
- Feedback and suggestions are important to us and help design the project.
- Available communication channels include;
 - Epuron corporate website: www.epuron.com.au
 - Rye Park project website: www.ryeparkwindfarm.com.au
 - Mailing address: Rye Park Wind Farm
Level 11, 75 Miller Street
North Sydney...NSW...2060
 - Phone: 02 8456 7400
 - Fax: 02 9922 6645
 - Email: ryepark@epuron.com.au
 - Senior Project Manager: Brian Hall
b.hall@epuron.com.au
 - Meetings Arranged by appointment



Thank you for your participation in the project during 2012 and merry Christmas.



Details for CCC meeting No 5
Venue: Yass Valley Council Chambers
Address: 209 Comur Street, Yass
Date: Monday 22 July 2013
Time: 12.30pm to 2.30pm

EPURON

**Rye Park Wind Farm
Community Consultation Committee
Meeting No 5
22 July 2013**

Presentation Contents for CCC Meeting No 5

1. CCC membership update
2. Epuron CCC action items from meeting 4
3. Project overview
4. Introducing TrustPower
5. Development update
6. Current project information
7. Next steps and timing
8. Communication and other information

Community Consultation Committee – Membership Update

- Independent chairperson;
 - Nic Carmody
- Involved landowners;
 - Graham and Margaret Privett
 - Greg Medway
- Uninvolved landowners;
 - Jenny and Chris Hally
 - Bev and Alex Davis
- Other, local group or association;
 - As required
- Local councils;
 - Mayor Wendy Tuckerman – Boorowa Council
 - Councillor James Wheelwright – Upper Lachlan Council
 - **Councillor Ann Daniel** and **Councillor Garry Ware** – Yass Valley Council
- Epuron
 - Brian Hall – Senior Project Manager



Two new CCC members from Yass Valley Council

Epuron CCC Action Items from CCC Meeting 4

- Follow up RFS for response to letter from Bev Davis
 - Epuron have sent follow up email and phone calls to Peter Alley at Yass RFS. Still awaiting response.
- Provide A1 size wall map to Yass Valley Council
 - A1 map forwarded to Yass Valley Council on 14 March for display purposes (copy also enclosed in this presentation and A3 map provided to CCC members).
 - A3 map provided to CCC members as part of meeting 5
- Upload copy of meeting presentation material to website
 - Uploaded week following last meeting.

Project Overview

- New Zealand utility Trustpower announced their project involvement in May 2013
- EA submitted to Department of Planning & Infrastructure November 2012 for review
- Expect EA to be publicly exhibited by DPI in the coming weeks / dates TBC by DPI
- EA layout of wind farm accommodates 126 turbines and associated infrastructure
- Layout incorporates consultation feedback and results of expert studies
- Overhead powerline voltage up to 330 kV on single pole type structure to 45 m high
- Transgrid progressing connection enquiry and commenced technical studies
- Five wind monitoring masts have been installed on site (>3 years data)
- Consultation and community feedback is ongoing
- Project details available at website www.epuron.com.au/projects/rye-park

Introducing TrustPower

- NZ publicly listed electricity generator / retailer (> 200,000 customers in NZ)
- 470 staff - market capitalisation of NZ\$2.4 billion - NZ\$800 million annual revenue
- Owns & operates 36 hydro generation stations across NZ
- 4 operating wind farms, including New Zealand's largest (Tararua Wind Farm) & Australia's 2nd largest (Snowtown Wind Farm)
- Active in Australia for last decade
- Snowtown Wind Farm (SA) – commissioned Stage 1 in 2008 (48 turbines 100MW)
- Snowtown Stage 2 under construction (90 turbines 270MW).



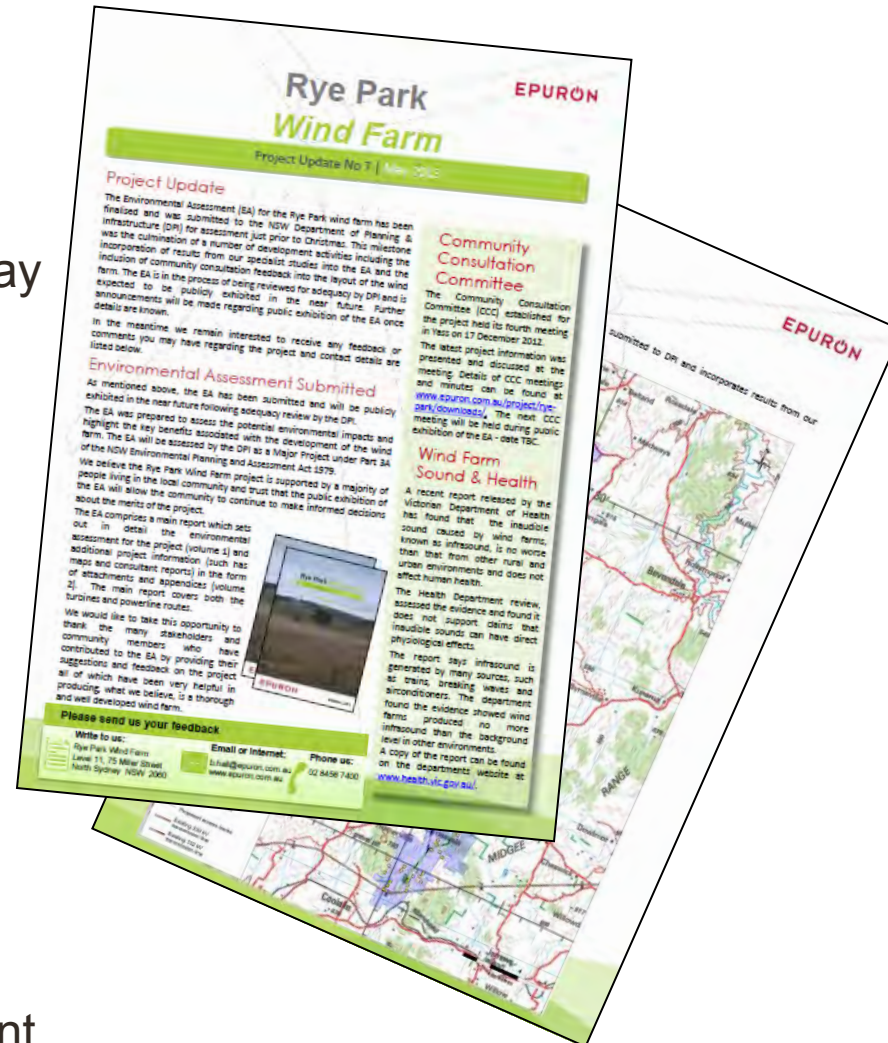
TrustPower Rye Park strategy

- TrustPower strategic plan to expand wind farm portfolio in Australia
- Rye Park Wind Farm – good fit within TrustPower strategy
- Option with Epuron to acquire the project following securing of land and planning approvals
- Working collaboratively with Epuron to enable construction feasibility as soon as possible post planning approvals
- Potential construction in 2015-16 (market demand in 2016-17)
- TrustPower has fostered strong landowner and community support for all projects
- Meeting all key stakeholders to build ongoing relationship for life of project



Development Update

- TrustPower announcement is significant milestone achievement
- Newsletter No 7 was released in May
- TrustPower initial site inspection for grid connection/electrical design completed end May
- Environmental winter survey was conducted across site week commencing 8 July
- Department expected to release EA for public exhibition July/August
- Department expected to release EA for public exhibition July/August
- New 80m wind monitoring mast installed at north of site (total of 5 masts) early 2013
- Currently transitioning landowners to Agreements to Lease
- Councillor David Needham no longer representing Yass Valley Council on CCC
- Global Wind Day held on 15 June and Epuron contributed to Goulburn Post media supplement



Wind Farm Access Roads Aid Fire-fighters

During recent grass fires in SA started by lightning, it was revealed that a significant benefit was brought by access roads built for a local wind farm.

“They were absolutely of great benefit in helping us fight the fires,” said the Snowtown Country Fire Service (CFS) Captain. “If it weren’t for the those roads, the fires, which were going at a fair rate of knots, would have just kept going. They acted as a natural fire break, giving us an edge to work back to and enabling us to back burn if we’d needed to. These new access roads provided an unexpected bonus, but they’ll help us control fires in the future.”

It was said access tracks installed as part of a wind farm increased accessibility onsite and therefore had a positive impact on response time and ability to fight fires onsite or neighbouring properties.

Notably, in consultation with authorities including the NSW Rural Fire Service and NSW Fire Brigade, a bushfire management plan would be prepared for Rye Park prior to commencement of construction.



Snowtown Wind Farm – SA (TrustPower)

Other CCC Discussion Points

- Consultation and feedback
 - Any communication or feedback to report from community
- Community Enhancement Fund
 - Any further thinking on required community support and delivery model
- What does the involvement of TrustPower mean
- Upcoming activities
 - EA exhibition
 - Open Day
 - Newsletter

Project Consultation – Key Activity and Timetable

Activity	Timing	Objectives	Stakeholders	Status
Community information workshop	November 2008	Introduce Epuron and the proposal to landowners and community including preliminary layout	Involved landowners and selected stakeholders	Completed
Newsletter 1	December 2009	Inform community about project and initial information	Involved and uninvolved landowners (mail-out)	Completed
Newsletter 2	June 2010	Provide updated information and planning details including	Involved and uninvolved landowners (mail-out)	Completed
Newsletter 3	December 2011	Outline planning process and updated development progress	Involved and uninvolved landowners (mail-out)	Completed
Consult with neighbours within 2km	January / February 2012 (ongoing)	To discuss project and impacts with neighbours including feedback	Uninvolved neighbours within 2km of turbine	Completed (but ongoing)
Newsletter 4	March 2012	Advise consultation plans and release revised wind farm layout	Involved and uninvolved landowners (mail-out)	Completed
Establish Community Consultation Committee	April / May 2012	Establish formal mechanism for community participation	Invited members	Completed

Project Consultation – Key Activity and Timetable.....continued

Activity	Timing	Objectives	Stakeholders	Status
CCC Meeting 1	May / June 2012	Provide project information and seek feedback	Invited members	Completed
Newsletter 5	June / July 2012	Update on studies and consultation and layout	Involved and uninvolved landowners (mail-out)	Completed
Community Open Day	June / July 2012		Involved and uninvolved landowners, CCC, consultants and public	Completed
CCC Meeting 2	July / August 2012	Provide updated information and consider feedback including release of draft final layout	Invited members	Completed
Newsletter 6	September / October 2012	Update on studies and consultation feedback contributing to draft final layout	Involved and uninvolved landowners (mail-out)	Completed
CCC Meeting 3	September / October 2012	Review of draft final layout incorporation feedback	Invited members	Completed
Lodgement of EA with DP&I	November 2012	Submit EA	DP&I	Completed

Project Consultation – Key Activity and Timetable.....continued

Activity	Timing	Objectives	Stakeholders	Status
CCC Meeting 4	December 2012	Advise CCC of final EA layout incorporating feedback and study results	Involved and uninvolved landowners, CCC and consultants	Completed
Newsletter 7	May 2013	Advise community of final EA layout incorporating feedback and study results	Involved and uninvolved landowners, CCC and consultants	Completed
CCC Meeting 5	July 2013	Consider feedback and any final amendments to lodged application	Involved and uninvolved landowners, CCC and consultants	Completed
EA Exhibition	Aug / Sept	Public exhibition of EA and submissions	Involved and uninvolved landowners, CCC, consultants and public	Pending
Community Open Day	During EA exhibition	Inform community of EA lodgement and exhibition	Involved and uninvolved landowners, CCC, consultants and public	Pending
Newsletter 8	During EA exhibition	Inform community of EA lodgement and exhibition	Involved and uninvolved landowners, CCC and consultants	Pending
CCC Meeting 6	During EA exhibition	Advise CCC of exhibited EA layout incorporating feedback and study results	Involved and uninvolved landowners, CCC and consultants	Pending

Communication and Feedback Channels Available

- Consultation is a two-way-street and we're always listening.
- Feedback and suggestions are important to us and help design the project.
- Available communication channels include;
 - Epuron corporate website: www.epuron.com.au
 - Rye Park project website: www.ryeparkwindfarm.com.au
 - Mailing address: Rye Park Wind Farm
Level 11, 75 Miller Street
North Sydney...NSW...2060
 - Phone: 02 8456 7400
 - Fax: 02 9922 6645
 - Email: ryepark@epuron.com.au
 - Senior Project Manager: Brian Hall
b.hall@epuron.com.au
 - Meetings Arranged by appointment



New RYP5 Wind Monitoring Mast – North Bearing

**Questions and general
discussion**

**Thank you for your
attendance**

Details for CCC meeting No 6**Venue:** Rye Park Memorial Hall**Address:** Yass Street, Rye Park**Date:** Monday 30 September 2013**Time:** 12.30pm to 2.30pm

EPURON

**Rye Park Wind Farm
Community Consultation Committee
Meeting No 6
30 September 2013**

Presentation Contents for CCC Meeting No 6

1. CCC membership update
2. Epuron CCC action items from meeting 5
3. Introducing TrustPower
4. Development update
5. Current project information
6. Next steps and timing
7. Communication and other information

Community Consultation Committee – Membership Update

- Independent chairperson;
 - Nic Carmody
- Involved landowners;
 - Graham Privett
 - Greg Medway
- Uninvolved landowners;
 - Jenny and Chris Hally
 - Bev and Alex Davis
- Other, local group or association;
 - As required
- Local councils;
 - Mayor Wendy Tuckerman – Boorowa Council
 - Councillor James Wheelwright – Upper Lachlan Council
 - Councillor Ann Daniel and Councillor Garry Ware – Yass Valley Council
- Epuron
 - Brian Hall – Senior Project Manager

Epuron CCC Action Items from CCC Meeting 5

- Invite Trustpower to attend the next CCC meeting to discuss wind farm experience and community enhancement funding ideas
 - Complete.
- To help inform further CCC thinking around community enhancement funding, Epuron are to provide an estimate of the number of houses located within 2km and 5km of proposed turbines
 - 2km – approx 46
 - 5km – approx 107
- How many proposed turbines located in each council LGA
 - Yass Valley - 18
 - Upper Lachlan - 25
 - Boorowa - 83

Epuron CCC Action Items from CCC Meeting 5.....continued

- The visual consultant to be invited to attend the Open Day planned during the public exhibition process
 - Complete
- Ensure minutes of last meeting reflect consultation requirements set out in the Supplementary DGR's
 - Complete
- Upload meeting material to website
 - Complete

Introducing TrustPower



TrustPower to provide a separate presentation to the CCC

Development Update

- NSW Rural Fire Service responds to letter from Epuron seeking their position on wind farms and fighting fires. See further details in this presentation.
- Representatives from NSW Office of Environment & Heritage visited site on 2 September and to assist with completion of EA adequacy comments.
- Further survey work is required for some areas/species during the current spring period to address the concerns raised by OEH.
- Following preliminary design optimisation works and field inspections there have been some alignment adjustments and scope changes to the proposed powerline easement routes.
- It is intended the EA (adequacy phase) will be finalised and resubmitted to the Department of Planning once the current spring survey works are complete.
- Meetings have been arranged with the three local councils to introduce TrustPower to the project.
- Works to transition landowners to Agreements to Lease is progressing well.

Other CCC Discussion Points

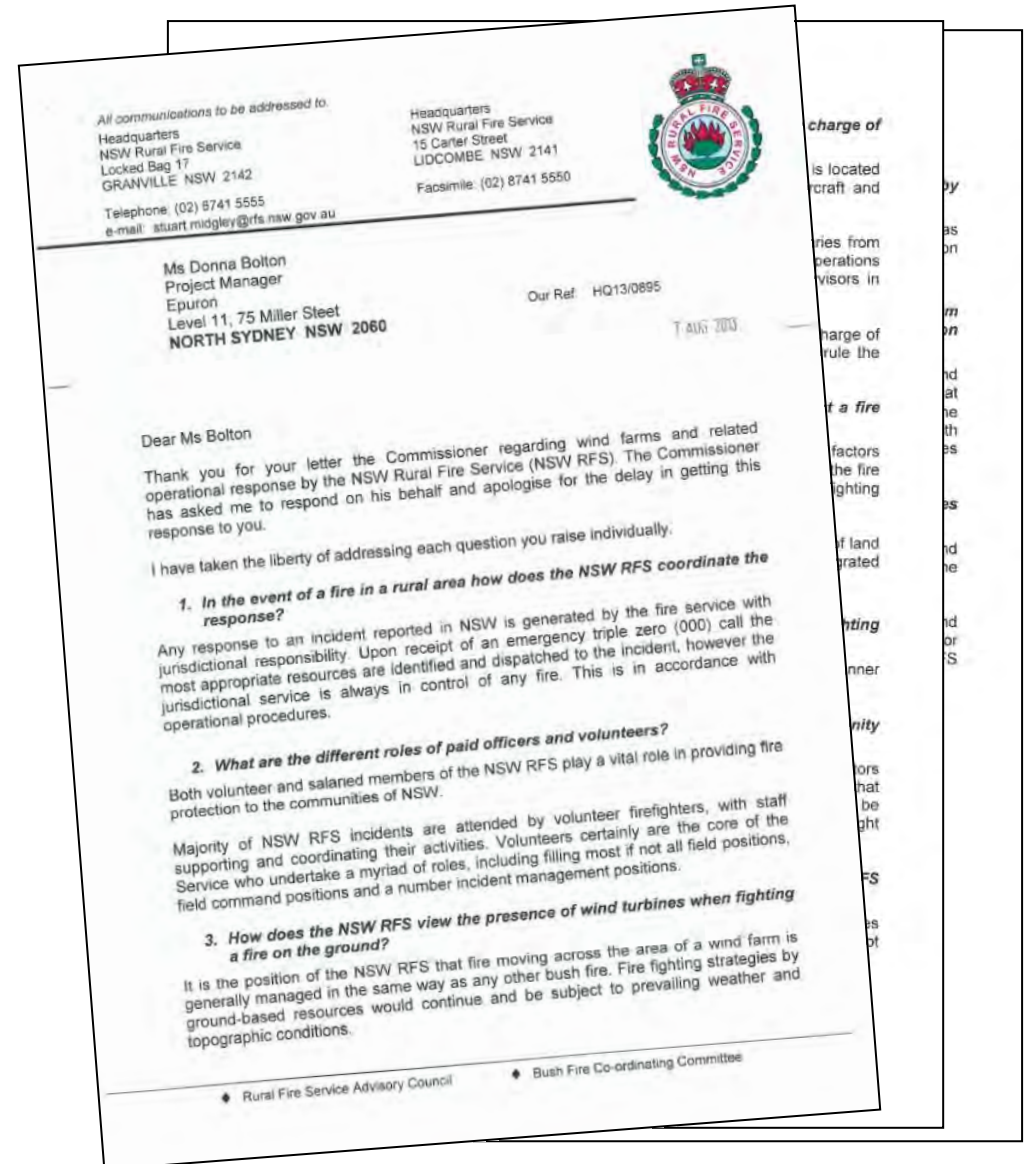
- Consultation and feedback
 - Any communication or feedback to report from community
- Community Enhancement Fund
 - Views and ideas put forward by TrustPower
- Activities planned during EA exhibition
 - EA exhibition
 - Open Day
 - Newsletter
- Next CCC meeting
 - Suggest next meeting date to be confirmed once EA exhibition dates are known

Jobs and Opportunities

- During consultation a number of people have asked us about the kinds of job and skills required to work on the wind farm construction or maintenance team during operations.
- Below is a list of general job types, skills or qualifications that local people and businesses can use as a guide for seeking employment on the wind farm.
- A project database is kept of people and businesses interested in participating in the wind farm construction or operation phases. Please let us know if you would like your details and capabilities added to this list.
 - Electricians HV/LV
 - Engineers / technicians
 - Heavy vehicle drivers
 - Steel fixers
 - Riggers
 - Labourers
 - Crane operators
 - Excavator operators
 - Mechanical fitters
 - Welders
 - Project managers
 - Environmental officers
 - Plumbers
 - Supervisory roles
 - Project managers
 - Landscapers / Gardeners
 - Safety officers
 - Cleaners
 - Maintenance staff
 - Caters
 - Administration staff

NSW Rural Fire Service

- Epuron recently wrote to the NSW RFS to ask them how they viewed the presence of wind farms when fighting fires on the ground or from the air.
- The August 1, 2013 response from the NSW RFS Assistant Commissioner, Stuart Midgley, noted;
 - On the ground.....”..fire moving across the area of a wind farm is generally managed in the same way as any other bush fire. Fire fighting strategies by ground-based resources would continue and be subject to prevailing weather and topographic conditions.”
 - From the air.....”..aircraft would avoid wind turbines in the same manner as they would avoid other obstructions, such as power lines.”



Project Consultation – Key Activity and Timetable

Activity	Timing	Objectives	Stakeholders	Status
Community information workshop	November 2008	Introduce Epuron and the proposal to landowners and community including preliminary layout	Involved landowners and selected stakeholders	Completed
Newsletter 1	December 2009	Inform community about project and initial information	Involved and uninvolved landowners (mail-out)	Completed
Newsletter 2	June 2010	Provide updated information and planning details including	Involved and uninvolved landowners (mail-out)	Completed
Newsletter 3	December 2011	Outline planning process and updated development progress	Involved and uninvolved landowners (mail-out)	Completed
Consult with neighbours within 2km	January / February 2012 (ongoing)	To discuss project and impacts with neighbours including feedback	Uninvolved neighbours within 2km of turbine	Completed (but ongoing)
Newsletter 4	March 2012	Advise consultation plans and release revised wind farm layout	Involved and uninvolved landowners (mail-out)	Completed
Establish Community Consultation Committee	April / May 2012	Establish formal mechanism for community participation	Invited members	Completed

Project Consultation – Key Activity and Timetable.....continued

Activity	Timing	Objectives	Stakeholders	Status
CCC Meeting 1	May / June 2012	Provide project information and seek feedback	Invited members	Completed
Newsletter 5	June / July 2012	Update on studies and consultation and layout	Involved and uninvolved landowners (mail-out)	Completed
Community Open Day	June / July 2012		Involved and uninvolved landowners, CCC, consultants and public	Completed
CCC Meeting 2	July / August 2012	Provide updated information and consider feedback including release of draft final layout	Invited members	Completed
Newsletter 6	September / October 2012	Update on studies and consultation feedback contributing to draft final layout	Involved and uninvolved landowners (mail-out)	Completed
CCC Meeting 3	September / October 2012	Review of draft final layout incorporation feedback	Invited members	Completed
Lodgement of EA with DP&I	November 2012	Submit EA	DP&I	Completed

Project Consultation – Key Activity and Timetable.....continued

Activity	Timing	Objectives	Stakeholders	Status
CCC Meeting 4	December 2012	Advise CCC of final EA layout incorporating feedback and study results	Involved and uninvolved landowners, CCC and consultants	Completed
Newsletter 7	May 2013	Advise community of final EA layout incorporating feedback and study results	Involved and uninvolved landowners, CCC and consultants	Completed
CCC Meeting 5	July 2013	Consider feedback and any final amendments to lodged application	Involved and uninvolved landowners, CCC and consultants	Completed
→ CCC Meeting 6	September 2013	Consider feedback and any final amendments to lodged application	Involved and uninvolved landowners, CCC and consultants	Completed
EA Exhibition	TBA	Public exhibition of EA and submissions	Involved and uninvolved landowners, CCC, consultants and public	Pending
Open Day, Newsletter and CCC Meeting	During EA exhibition	Inform community of EA lodgement and exhibition	Involved and uninvolved landowners, CCC, consultants and public	Pending

Communication and Feedback Channels Available

- Consultation is a two-way-street and we're always listening.
- Feedback and suggestions are important to us and help design the project.
- Available communication channels include;
 - Epuron corporate website: www.epuron.com.au
 - Rye Park project website: www.ryeparkwindfarm.com.au
 - Mailing address: Rye Park Wind Farm
Level 11, 75 Miller Street
North Sydney...NSW...2060
 - Phone: 02 8456 7400
 - Fax: 02 9922 6645
 - Email: ryepark@epuron.com.au
 - Senior Project Manager: Brian Hall
b.hall@epuron.com.au
 - Meetings Arranged by appointment



Rye Park No 5 Wind Monitoring Mast – North Bearing

**Questions and general
discussion**

**Thank you for your
attendance**