

EPURON

**Rye Park Wind Farm
Community Consultation Committee
Meeting No 1
27 June 2012**

Meeting Agenda

1. **Epuron**
 - About us
2. **Rye Park Wind Farm**
 - Project overview and current development status
3. **Draft NSW Wind Farm Planning Guidelines**
 - Overview of Guidelines and current position
4. **Community Consultation Committee**
 - Purpose, objectives and general proceedings
5. **Project Consultation**
 - Overview of project consultation plan
6. **Project Information**
 - Location and layout
 - The likely impacts – Assessment of key issues
 - The likely benefits
 - Other reference documents
7. **Next Steps and Timing**

Epuron – Background and History

- Founded 2003
- ~15 staff based in North Sydney
- 100% Australian-owned company
- In-house expertise in wind development; planning; grid; wind modelling; GIS; wind monitoring; instrumentation; solar PV design and construction
- Extensive wind monitoring network (>50 masts)

Track record of NSW wind farm developments

Cullerin Range	Sold to Origin: Operating	30MW
Snowy Plains	Sold to Origin: Approved (lapsed)	30MW
Conroys Gap	Sold to Origin: Approved	30MW
Gullen Range	Sold to Goldwind: Approved	73 turbines
Yass Valley	Sold to Origin: seeking Approval	>100 turbines
Silverton	Sold to AGL	
	Stage 1 Approved	<430MW
	Stage 2 Concept Approved	600+MW
White Rock	Seeking approval	119 turbines
Eden	Seeking approval	7 turbines
Other	>10 sites under development	



30MW Cullerin Range Wind Farm (Goulburn, NSW)

- Developed by Epuron
- Constructed by Origin Energy in 2008/09
- Peak workforce of 100, 60 from local area
- 15 x Repower turbines = 30MW
 - net yield 47% Jul to Dec 2009 – in top 3 wind sites in Australia
 - Highest yielding wind farm in National Electricity Market, 2010
- Community fund established

Epuron - Key Markets

- Large-scale wind (“Utility scale”)
 - 80-120 wind turbines, 150-360MW
 - power for 60,000 - 210,000 homes
 - investment \$350-\$750M each
- Small-scale wind (“Community scale”)
 - 7-15 wind turbines, 15-30MW
 - power for 8,000 -17,000 homes
 - investment \$30-\$60M each
- Solar photovoltaics (PV)
 - 1-10 megawatts off-grid (diesel grid)
 - e.g. TKLN Solar, 1MW supplying 3 remote communities in the NT
 - investment \$5-\$25M each



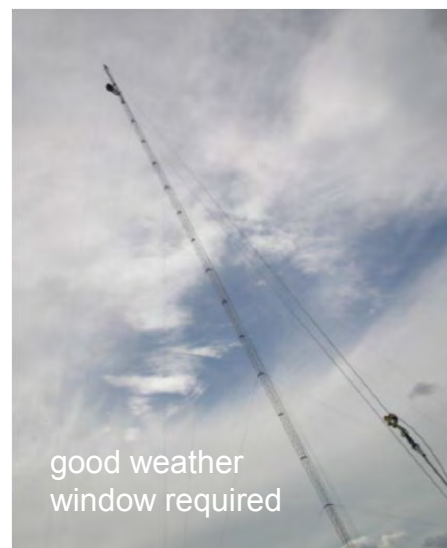
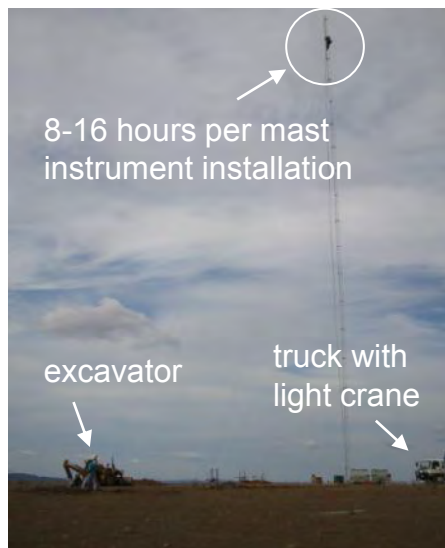
Eden Wind Farm - Photomontage



TKLN Solar Project Northern Territory

Epuron – Wind Monitoring Technology

Conventional approach – Met-mast



New approach – SODAR Fulcrum 3D



- ▶ Australian designed and built SODAR
- ▶ Range to 150m in 10m height bins
- ▶ Full3D wind data analysis
- ▶ Can be towed by any car (~350kg)
- ▶ Tow to site; level; switch on
- ▶ No weather delays

Rye Park Wind Farm – Project Overview

- Project located on freehold rural land north of Yass and East of Rye Park
- Layout (currently) consists of ~131 wind turbines and associated infrastructure
- Based on 3MW turbine would be 393MW project and approx \$750m-850m investment
- Three active wind monitoring masts across site with around 2 years of data (+1 soon)
- Predicted wind speed and energy yield at hub height supports feasible development
- Turbine design envelope accommodates Siemens SWT3.0-113 or Vestas V112-3.0
- Proposed maximum turbine tip height 156.5m (100m hub height and 113m rotor)
- Grid connection at existing Transgrid 330kV transmission line crossing south of site
- Project being assessed as Major Project under Part 3a of EP&A Act 1979
- Declared Critical Infrastructure Project under Section 75C of EP&A Act 1979
- Involved wind farm landowners secured under contract

Rye Park Wind Farm – Current Development Status

- Revised turbine layout released in May 2012 newsletter – 131 turbines
- Spring/Summer environmental surveys completed in Oct-Nov 2011 and Mar-Apr 2012
- Archaeological field survey underway July 2012 – includes local indigenous reps
- Noise logging campaign underway at selected involved and uninvolved dwellings
- Visual photomontage public locations selected including neighbouring homes to 2km
- Traffic and Transport Study underway and will include consultation with councils
- Other studies including aviation, communications, shadow flicker etc underway
- Community Open Day planned to be held in Rye Park in July 2012
- Targeting EA lodgement with Department of Planning late Q3 early Q4 2012
- Project details available at website www.epuron.com.au/projects/rye-park

Draft NSW Wind Farm Planning Guidelines – Overview

- Draft NSW Wind Farm Planning Guidelines exhibited 23 Dec 2011 to 14 Mar 2012
- Government intends finalising Guidelines by mid 2012 (still outstanding)
- Policy Statement released 18 April identifying interim arrangements for existing State Significant Developments and transitional Part 3a wind farms
- The transitional arrangements vary depending on the stage of an application in the assessment and determination process

Stage 1 - New applications for which DGRs have been issued

Stage 2- Applications for which DGRs have been issued but are yet to be exhibited

Rye Park
Wind Farm



Stage 3 - Applications that have been exhibited but not yet determined

Stage 4 - Applications that have been approved

Draft NSW Wind Farm Planning Guidelines – Stage 2 Transitional Arrangements

2. *Applications for which DGRs have been issued but are yet to be exhibited*

The guidelines will apply to the maximum extent possible to all wind farm applications for which the DGRs have been issued, but an environmental assessment has not yet been exhibited.

- Proponents are encouraged to adopt relevant provisions of the guideline relating to the construction and operation of wind farms in their environmental assessment, in particular relating to noise assessment, visual assessment, aviation safety, bushfire hazards, construction, decommissioning, monitoring and compliance programs. Please refer to the attached Checklist.
- Proponents should consult with all neighbours with dwellings within 2km of proposed wind turbines to identify any issues and potential approaches to mitigate any adverse impacts. Proponents should, where possible, seek the written agreement from neighbours with a dwelling within 2km of a proposed wind turbine.
- It is strongly recommended that proponents, if not done so already, immediately establish a Community Consultation Committee to provide for ongoing communication with the local community. Appendix C of the guidelines provides guidance on the establishment, membership and operation of the committee. The Department will assist proponents with the appointment of an independent committee chair and in the selection of members.

Draft NSW Wind Farm Planning Guidelines – Transitional Check-List

CHECK LIST
 Key aspects of the 'Draft NSW Planning Guidelines Wind Farms'
 relevant to applications yet to be exhibited

Issue	Potential Issues for considerations
Consultation	<ul style="list-style-type: none"> • Form a Community Consultation Committee. • Document the consultation process undertaken, including stakeholders consulted. Identify and tabulate issues raised by stakeholders during consultation. Describe how issues raised have been addressed. • Consult with all neighbours with dwellings within 2km of a proposed wind turbine. Identify the neighbours' issues and potential approaches to mitigate any adverse impacts. • Consider seeking agreement with neighbours with dwellings within 2km of a proposed wind turbine.
Landscape and visual amenity	<ul style="list-style-type: none"> • Provide photomontages from all non-host dwellings within 2km of a proposed wind turbine. • Identify the zone of visual influence of the wind farm (no less than 10km), and likely impacts on community and stakeholder values. Consider cumulative impacts on landscape and views. • Outline mitigation measures to avoid or manage impacts.
Noise	<ul style="list-style-type: none"> • Undertake assessment based on separate daytime (7am to 10pm) and night-time periods (10pm to 7am). • Predict noise levels at all dwellings within 2km of a proposed turbine. • Consider special audible characteristics, including tonality, amplitude modulation, and low frequency noise (apply penalties where relevant). • Outline measures to avoid, minimise, manage and monitor impacts.
Health	<ul style="list-style-type: none"> • Consider and document health issues, focusing on neighbours with dwellings within 2km of proposed wind turbines.
Ecological issues	<ul style="list-style-type: none"> • Consider potential impacts on birds and bats, particularly migratory species and outline the proposed monitoring and mitigation strategy

Draft NSW Wind Farm Planning Guidelines – Transitional Check-List

CHECK LIST
 Key aspects of the 'Draft NSW Planning Guidelines Wind Farms'
 relevant to applications yet to be exhibited

Aviation safety	<ul style="list-style-type: none"> • Outline current agricultural aerial uses on neighbouring properties. • Consider the potential for the proposed wind farm to impact on aviation safety associated with agricultural aerial uses consistent with the draft guidelines.
Bushfire hazard	<ul style="list-style-type: none"> • Consider bush fire issues consistent with the draft guidelines, including the risks that a wind farm will cause bush fire and any potential impacts on the aerial fighting of bush fires.
Blade throw	<ul style="list-style-type: none"> • Assess blade throw risks consistent with the draft guidelines. • Outline measures to avoid, minimise, manage and monitor impacts.
Economic issues	<ul style="list-style-type: none"> • Consider whether the wind farm use is consistent with relevant local or regional land use planning strategies. • Consider potential to impact upon mining/petroleum leases and exploration licences. • Consider any potential impacts upon property values consistent with the draft guidelines, including properties within 2km.
Decommissioning	<ul style="list-style-type: none"> • Include a Decommissioning and Rehabilitation Plan in the EA, including proposed funding arrangements. • Confirm that the proponent not the landowner is responsible for decommissioning.
Monitoring and compliance program	<ul style="list-style-type: none"> • Outline program to monitor environment performance to ensure compliance including mechanisms for reporting outcomes and procedures to rectifying non-compliance – including any provisions for independent reviews.
Council planning controls	<ul style="list-style-type: none"> • Outline whether the proposal is consistent with any relevant provisions of the relevant council's Development Control Plan and list any variations.

Community Consultation Committee - Purpose and Objectives

- To enable Epuron to formally provide the local community with information about the proposal;
- To enable the community to express and for Epuron to understand any concerns regarding the potential impacts of the proposal;
- To enable Epuron to consider whether and how to incorporate any suggestions and feedback into the design of the proposal;
- To demonstrate how and where feedback has been incorporated and resulted in amendments to the proposal;
- To formally advise potential community benefits that can be integrated into the proposal; and,
- To establish and strengthen good working relationships between the proponent and the local community.

Community Consultation Committee - Membership

- An independent chairperson;
 - Councillor David Needham (nominated by Yass Council to NSW DoP)
- A representative of the involved wind farm landowners;
 - Graham Privett
- A representative of the non involved neighbouring landowners;
 - Drew and Robyn Chapman
- A representative from a key local stakeholder group or association;
 - TBC
- A representative from each of the local councils; and
 - Mayor Wendy Tuckerman – Boorowa Council
 - Councillor James Wheelwright – Upper Lachlan Council
 - Councillor David Needham – Yass Council
- A representative from Epuron
 - Brian Hall – Senior Project Manager (others available as required)

Community Consultation Committee – General Proceedings

- The Chairperson to set the agenda and convene and chair meetings
- The committee is not a decision-making body and it is not a requirement that consensus be reached on issues discussed
- Meeting proceedings should generally include;
 - Apologies
 - Declaration of pecuniary or other interests
 - Confirmation of the previous meeting minutes
 - Business arising from previous minutes
 - Correspondence
 - Proponent reports and overview of development activities
 - General business
 - Next meeting
- Minutes are to be kept of all meetings of the committee
- Committee to determine frequency of meetings – suggest every 4-6 weeks for now
- Meetings to be held at a convenient location – suggest local venue

Project Consultation – The Plan

- Epuron is striving to ensure that the project is developed and built in a manner which recognises the importance of an ongoing, long term relationship with the community
- The Rye Park Wind Farm Project Consultation Plan;
 - guides community and stakeholder engagement activity for the project during the development phase (up to project approval)
 - reflects the corporate requirements set out in Epuron's Community Consultation Framework and the DGR's issued for the project by the NSW DoP
 - is dynamic and periodically updated as required during consultation activity
 - reflects the specific needs of the project and the key community stakeholders
 - has taken into consideration the NSW Draft Wind Farm Planning Guidelines. While these draft guidelines are not yet in force, there are transitional provisions in place.
- The Project Consultation Plan is available at www.epuron.com.au/projects/rye-park

Project Consultation – Scope of the Plan

- Epuron's Consultation Framework identifies the following development phases for the project during its lifecycle:
 - Phase 1 – Project Awareness
 - Phase 2 – Project Investigations
 - Phase 3 – Project Development & Approvals
 - Phase 4 – Post Development Approval and Pre Construction
 - Phase 5 – Construction & Commissioning
 - Phase 6 – Operations & Decommissioning
- The Project Plan outlines those consultation activities proposed during the pre-approval development phases of the project which are phases 1 through 3.
- A further consultation plan will be developed as the project enters Phase 4 of its development.

Project Consultation – Objectives of the Plan are to.....

- minimise undue community concern in relation to the proposal, particularly during the early stages when little information on the project was known;
- ensure the community and other stakeholders are fully informed and aware of the proposal, it's likely impacts, and its likely benefits;
- ensure that Epuron fully understands the local context for the proposal, including any local impacts that the proposal may have or opportunities that it could provide;
- incorporate the suggestions and feedback into the design of the wind farm where possible;
- explain where and how this feedback can be and has been incorporated; and,
- provide opportunities for dialogue to allow the community to receive information and provide feedback about the proposal.
- investigate how best to maximise the local and regional benefit of the development. Specifically, Epuron is looking for feedback as to how a Community Fund might be established for the project, and what kind of community support is required in the vicinity of the project.

Project Consultation – Key Stakeholder Groups

- Residents and Landowners
 - Involved landowners
 - Uninvolved neighbours (within 2km from wind turbine)
 - Nearby neighbours (2 – 5km from wind turbine)
 - Distant neighbours (5 – 15km from wind turbine)
 - General public (>15km from wind turbine)
- Community Groups
 - eg. Landcare Groups, Guardians (BDLG), CWA, Rotary and Chamber of Commerce
- Local Media
 - eg. Yass Tribune, Boorowa News and Yass FM Radio
- Local Government
 - Yass, Boorowa and Upper Lachlan Councils
- State and Federal Government
 - State and Federal members and Ministers
 - Government agencies and authorities
- Other Stakeholders
 - eg. Aerial Agricultural Association of Australia and Telco Operators (Telstra etc)

Consultation – Summary of Key Consultation Activity and Timetable

Activity	Timing	Objectives	Stakeholders	Status
Community information workshop	November 2008	Introduce Epuron and the proposal to landowners and community including preliminary layout	Involved landowners and selected stakeholders	Completed
Newsletter 1	December 2009	Inform community about project and initial information	Involved and uninvolved landowners (mail-out)	Completed
Newsletter 2	June 2010	Provide updated information and planning details including	Involved and uninvolved landowners (mail-out)	Completed
Newsletter 3	December 2011	Outline planning process and updated development progress	Involved and uninvolved landowners (mail-out)	Completed
Consult with neighbours within 2km	January / February 2012 (ongoing)	To discuss project and impacts with neighbours including feedback	Uninvolved neighbours within 2km of turbine	Completed (but ongoing)
Newsletter 4	March 2012	Advise consultation plans and release revised wind farm layout	Involved and uninvolved landowners (mail-out)	Completed
Establish Community Consultation Committee	April / May 2012	Establish formal mechanism for community participation	Invited members	Completed

Consultation – Summary of Key Consultation Activity and Timetable

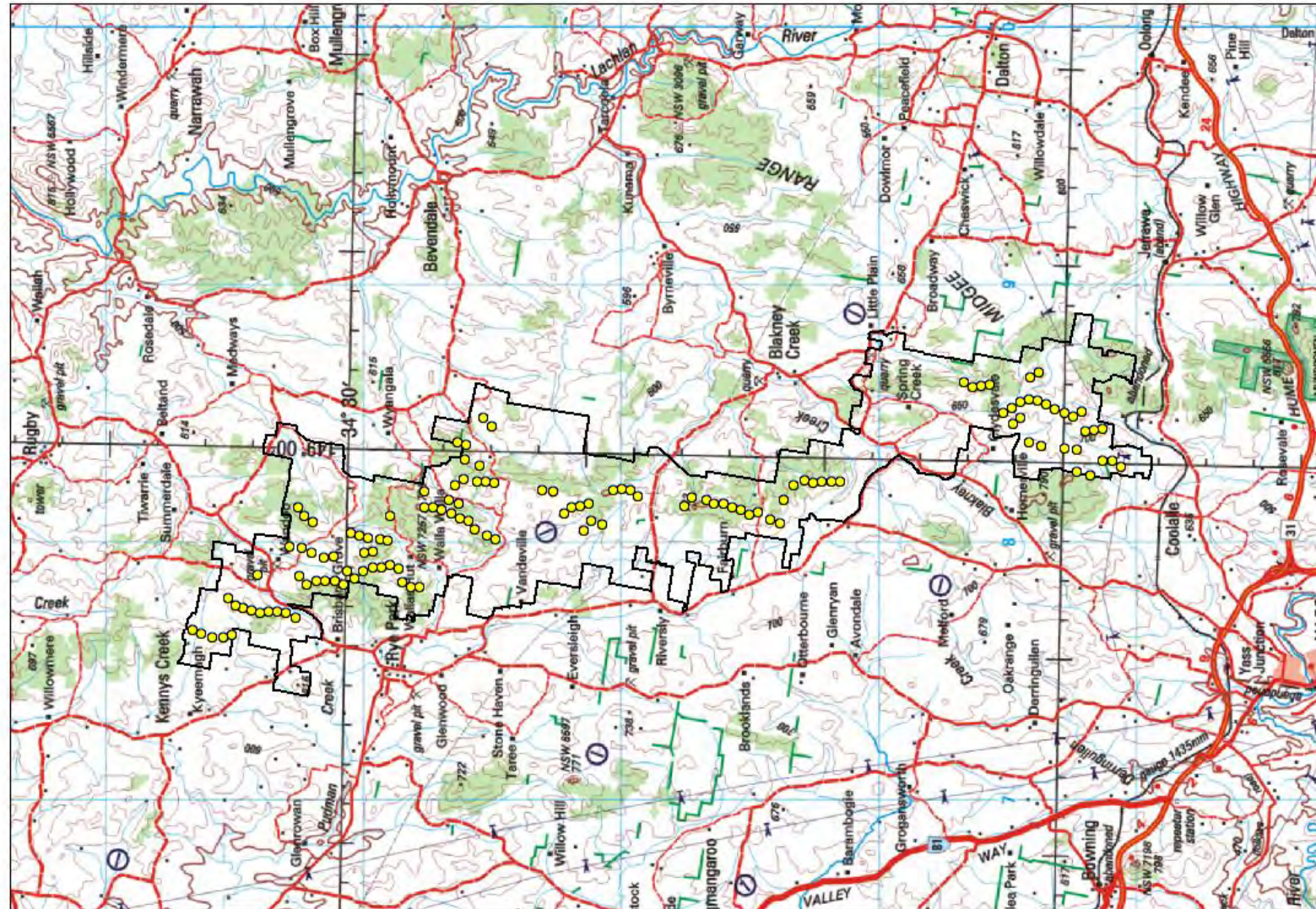
Activity	Timing	Objectives	Stakeholders	Status
CCC Meeting 1	May / June 2012	Provide project information and seek feedback	Invited members	To be held 27 June 2012
Newsletter 5 and Community Open House 1	June / July 2012	Update on studies and consultation and layout	Involved and uninvolved landowners (mail-out)	pending
CCC Meeting 2	July / August 2012	Provide updated information and consider feedback including release of draft final layout	Invited members	TBC – Thursday 2 August 2012
Newsletter 6 and Community Open House 2	September / October 2012	Update on studies and consultation feedback contributing to draft final layout	Involved and uninvolved landowners (mail-out)	pending
CCC Meeting 3	September / October 2012	Provide draft final documentation for review and feedback	Invited members	TBC – Monday 17 September 2012
Pre DA submission follow up	September / October 2012	Consider feedback and any final amendments required prior to lodging application	Involved and uninvolved landowners, CCC and consultants	pending

Consultation – Communication and Feedback

- Consultation is a two-way-street and we're always listening
- Feedback and suggestions are important to us
- Available communication channels include;
 - Epuron corporate website: www.epuron.com.au
 - Rye Park project website: www.ryeparkwindfarm.com.au
 - Mailing address: Rye Park Wind Farm
Level 11, 75 Miller Street
North Sydney...NSW...2060
 - Phone: 02 8456 7400
 - Fax: 02 9922 6645
 - Email: RyePark@epuron.com.au
 - Senior Project Manager: Brian Hall
b.hall@epuron.com.au
 - Meetings Arranged by appointment

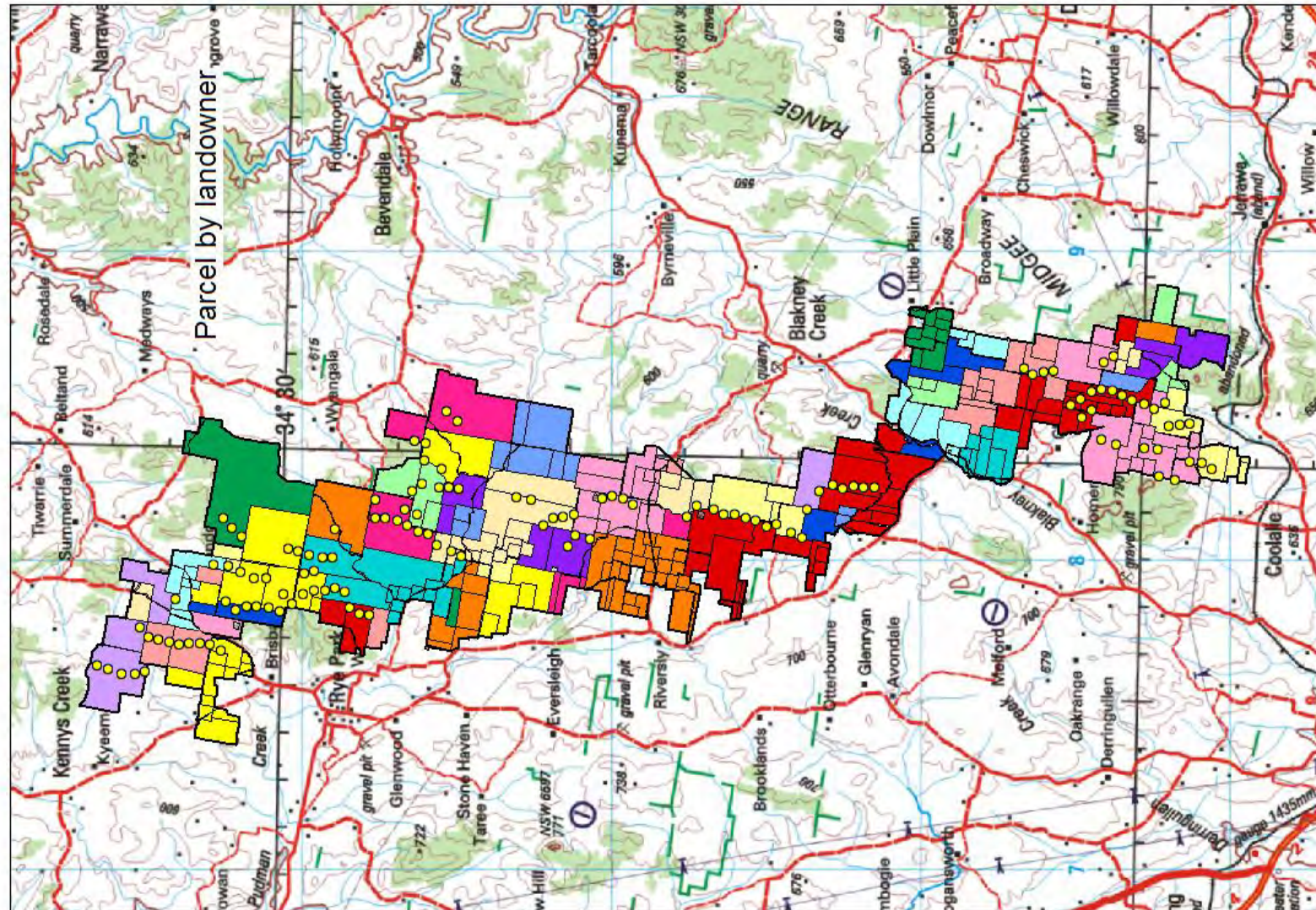
Project Information - Regional Location and Site Boundary

- Approx distance from local town to nearest turbine
 - ~3km east of Rye Park
 - ~17km south east of Boorowa
 - ~10km north east of Yass
 - ~4km west of Blakney Creek



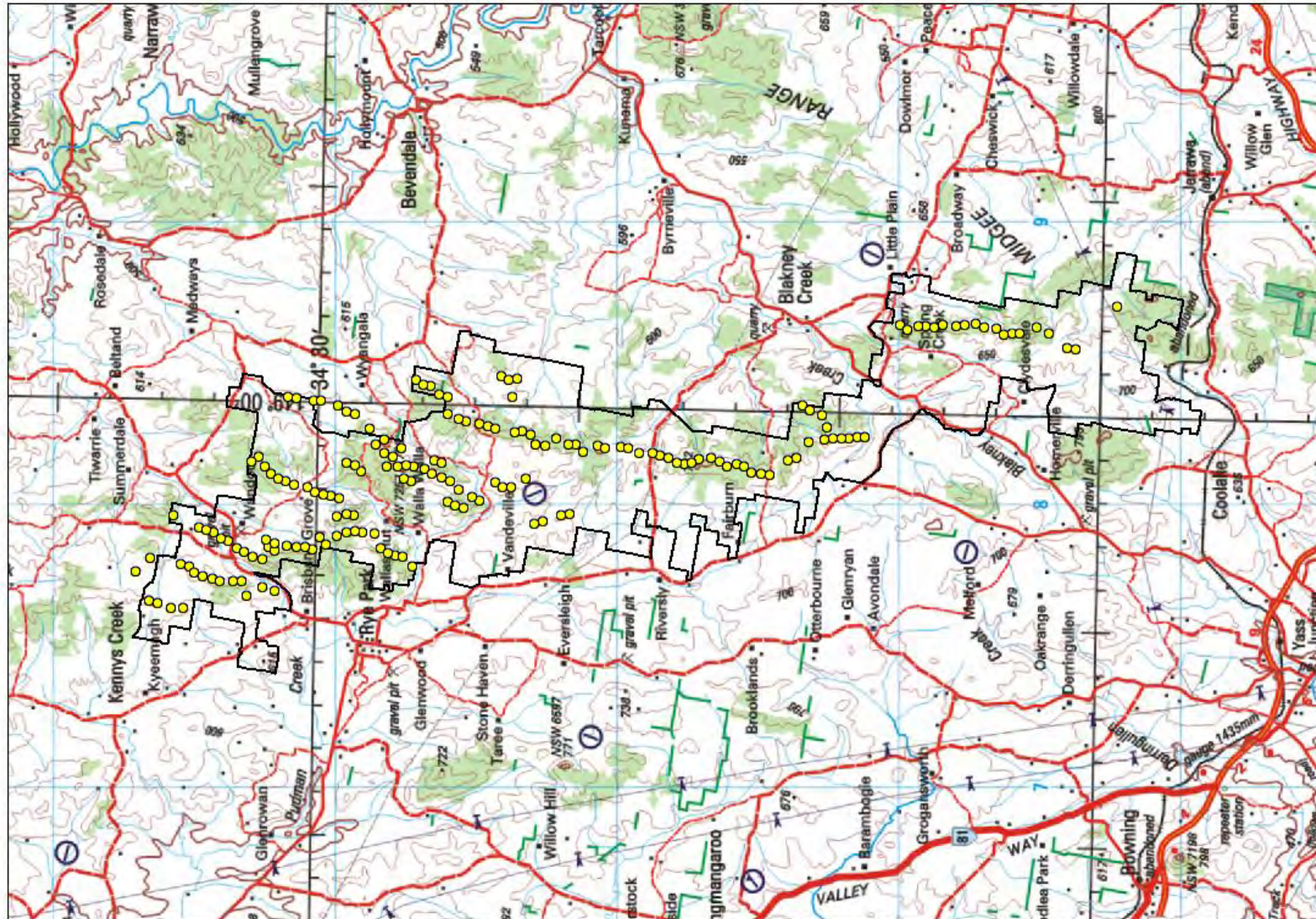
Project Information – Landowners within Site Boundary

- Approx ~45 landowners signed to be involved in wind farm project



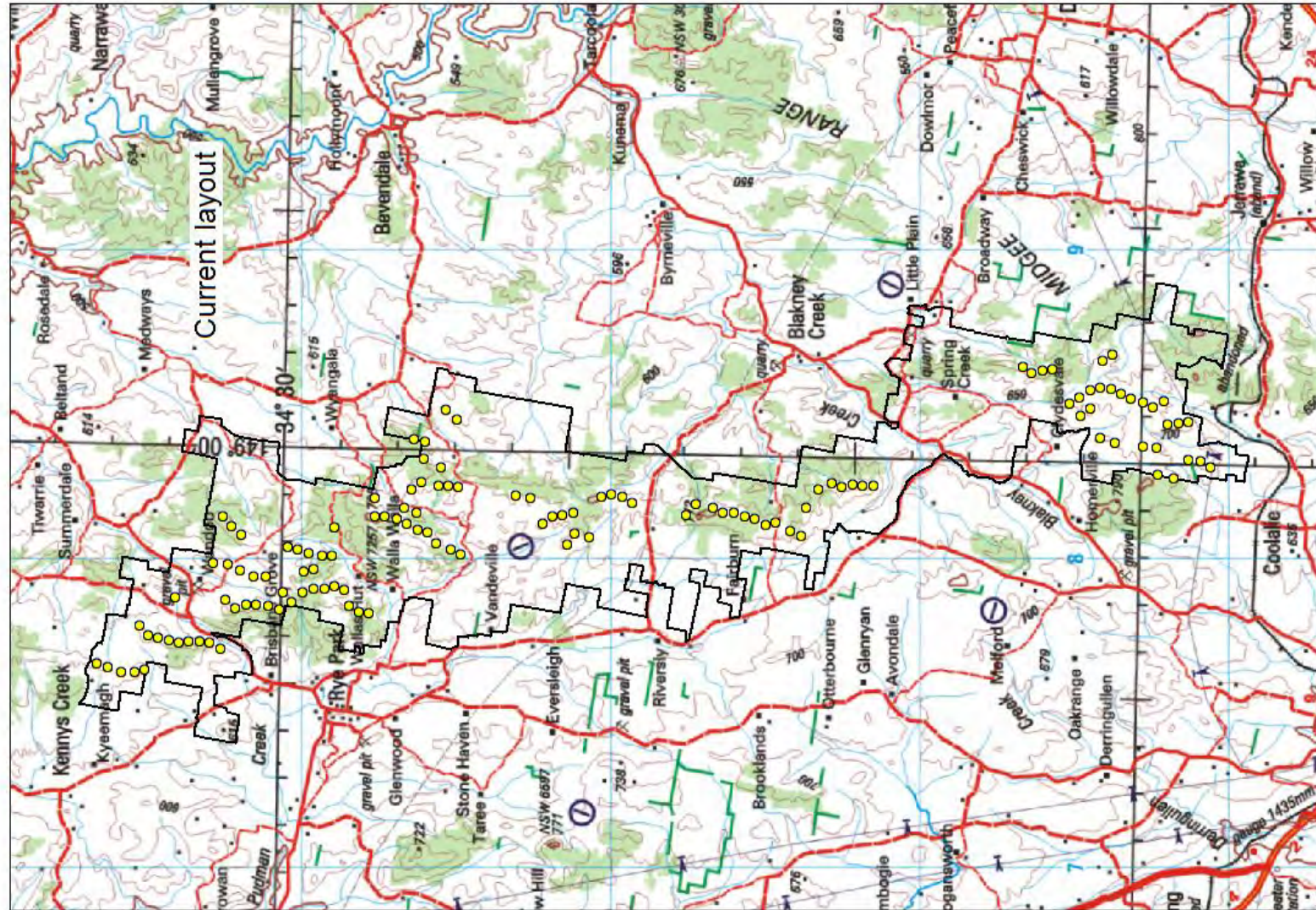
Project Information – Preliminary Layout

- Preliminary layout developed 2009-10
- Approx 180 wind turbines
- Based on initial desktop analysis, 6-12 months of wind data, land and landowner assessment



Project Information – Revised Layout

- Revised layout developed 2011-12
- Layout includes 131 wind turbines
- Based on 2011 environmental survey, 2 years of wind data, constraints analysis, land arrangements and consultation feedback

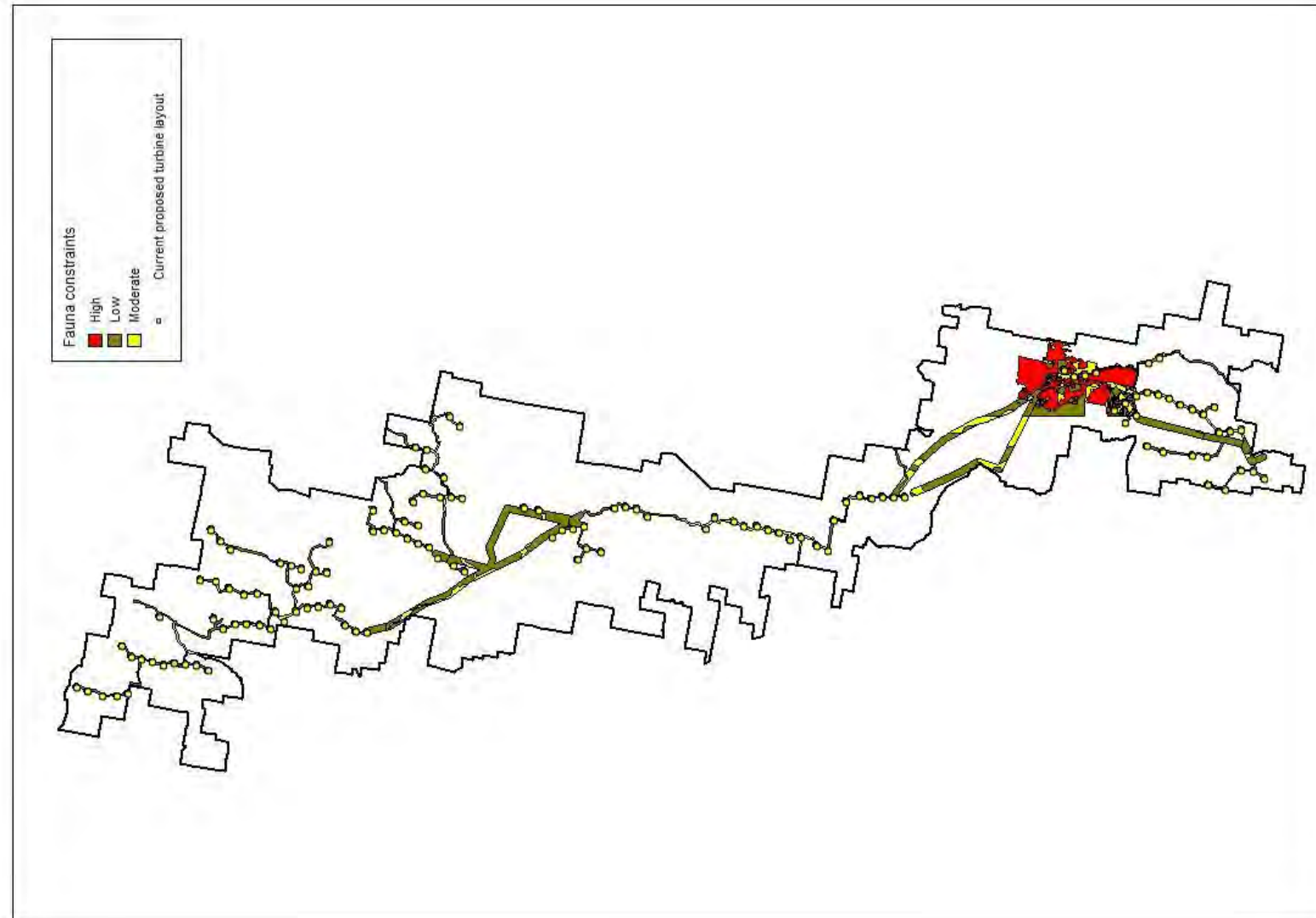


Project Information – Environmental Assessment

- Assessment of key issues;
 - Ecology (Environmental Flora and Fauna)
 - Noise (Operational and Construction)
 - Visual Amenity
 - Archaeology (Aboriginal and European Heritage)
- Other project assessments include;
 - Aviation
 - Communications
 - Electromagnetic Fields
 - Shadow Flicker
 - Fire and Bushfire Risks
- General environmental assessments include;
 - Drainage and Hydrology, Soils and Landforms, Climate and Air Quality, Mineral Exploration, Economic, Resource Impacts, Traffic and Transport

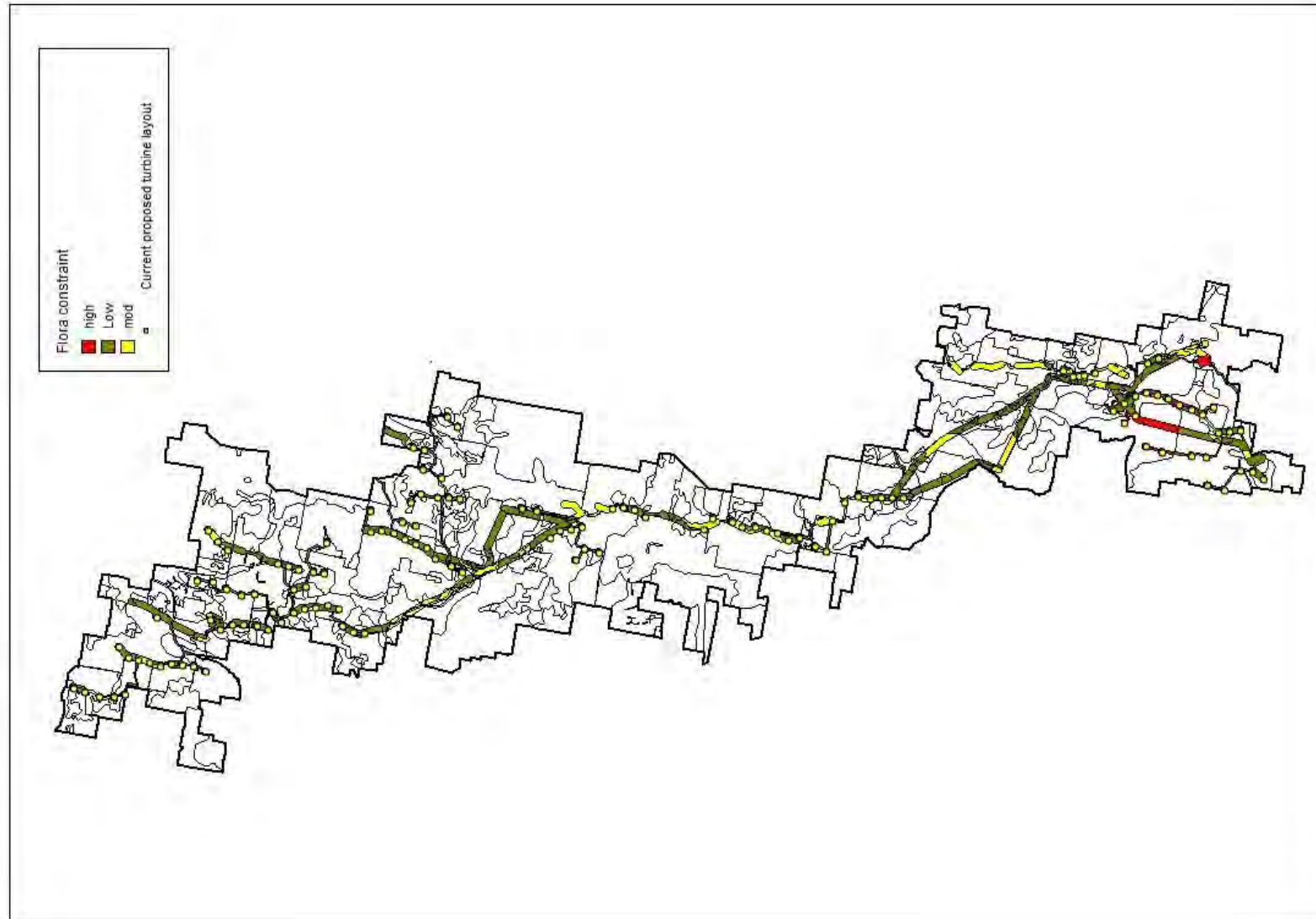
Project Information – Environmental Constraints - Fauna

- Two annual seasonal surveys completed
- Fauna habitat constraints are based on whether proposed clearing could adversely impact habitat
 - Patch size and integrity
 - Connectivity
 - Key features such as rocky outcrops or hollow bearing trees



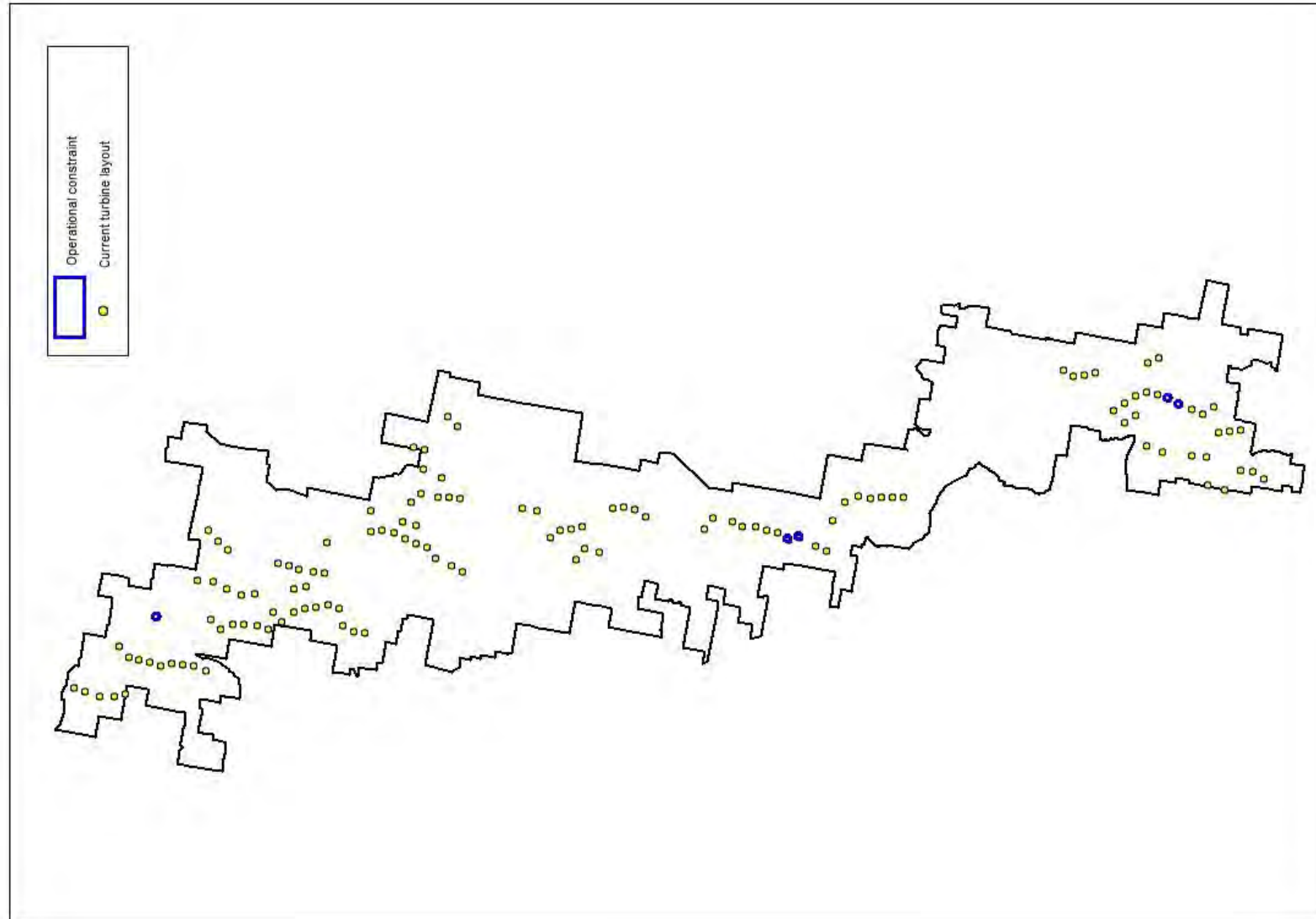
Project Information – Environmental Constraints - Flora

- Two annual seasonal surveys completed
- Majority of turbines are in low and moderate flora constraint areas
- Some turbines microsited away from high constraint areas



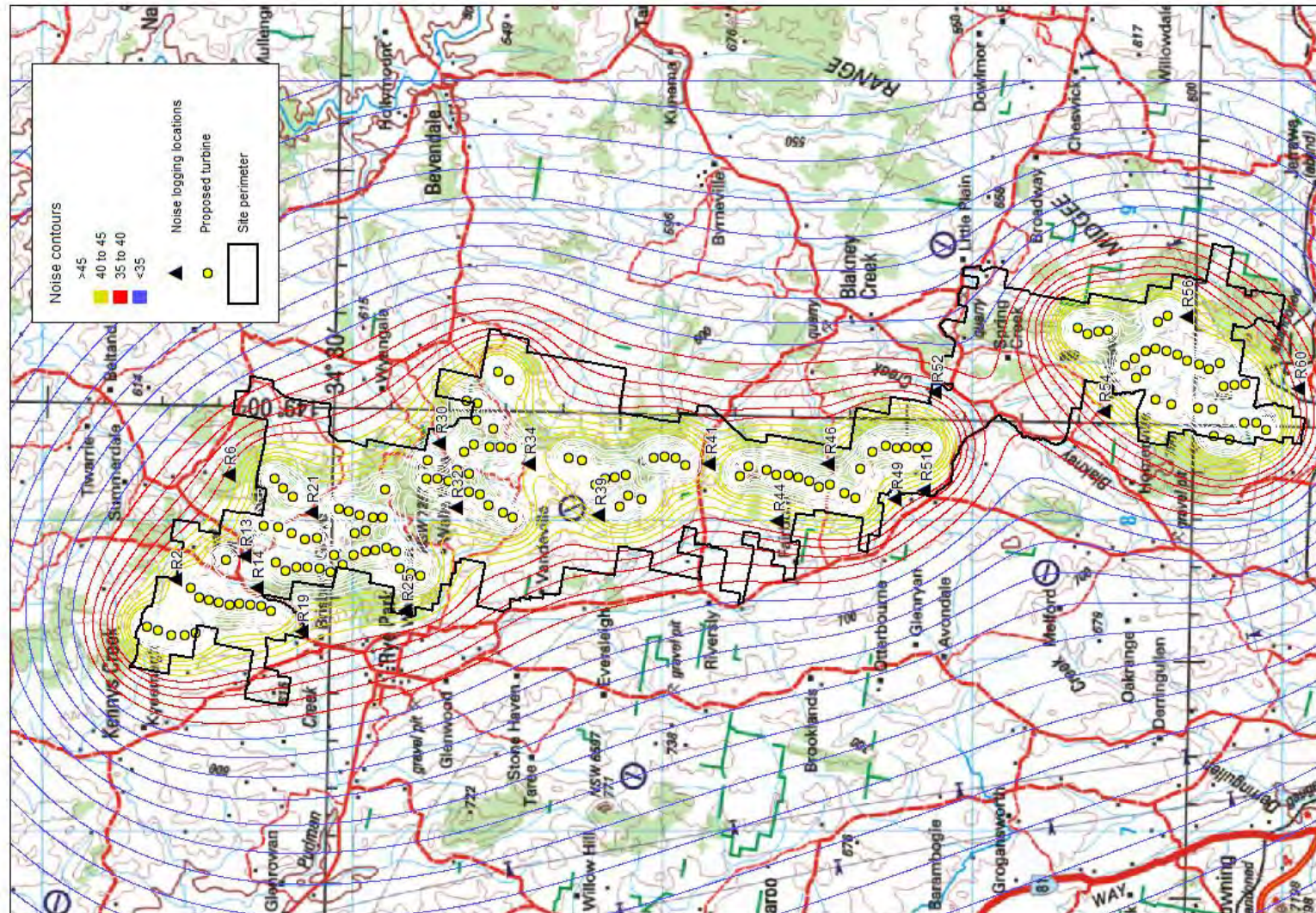
Project Information – Environmental Constraints - Operational

- Constraint assessed on potential for
 - Isolated turbines
 - Landscape position – near to heads of valleys or escarpments
 - Increased distance to nests
- Five turbines removed or relocated away from operational constraint areas



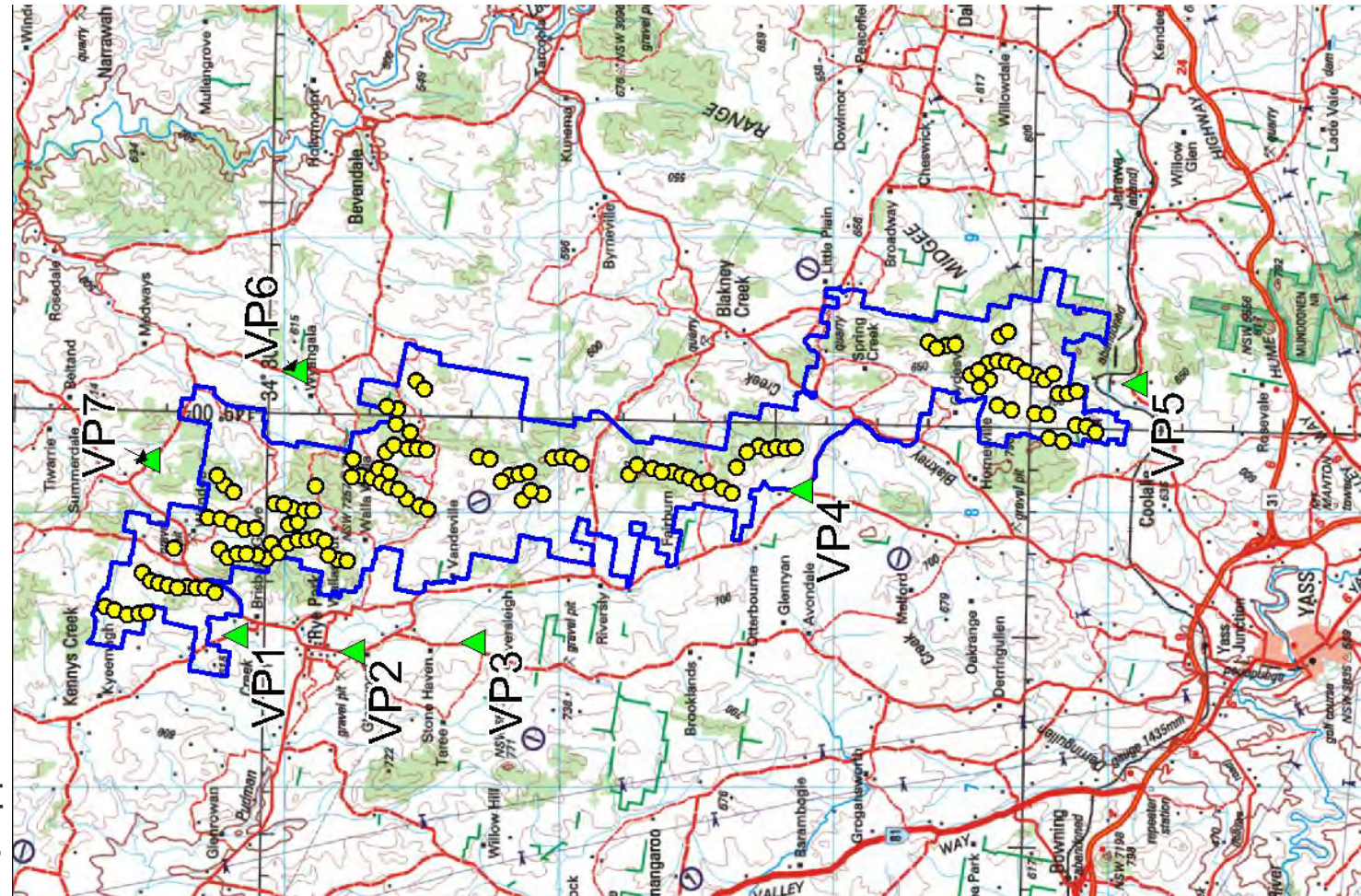
Project Information – Noise

- Preliminary noise modelling complete
- Background noise logging program underway at identified locations
- Final noise modelling to be completed when layout finalised
- Uninvolved noise limit greater of 35dBA or background plus 5dBA with separate day time and night time periods



Project Information – Visual

- Preliminary photomontages for selected public view points VP1, VP3, VP4 and VP5 have been prepared for consultation purposes
- Final photomontages for public viewpoints including VP2, VP6 and VP7 will be prepared when layout is finalised
- Epuron arranging to take photomontages at neighbouring dwellings within 2km of a wind turbine



Project Information – Visual (Preliminary Photomontages)



Viewpoint VP1 – Little Plains Road

Rye Park Wind Farm
 Photomontage 1, Little Plains Road
 Horizontal Field of View: 165°
 Bearing: 95° (East)



Viewpoint VP3 – Wargeila Road

Rye Park Wind Farm
 Photomontage 3, Wargeila Road
 Horizontal Field of View: 145°
 Bearing: 90° (East)

Project Information – Visual (Preliminary Photomontages)



Viewpoint VP4 – Corner of Cooks Hill Road and Dalton Road

Rye Park Wind Farm
 Photomontage 4, Corner of Cooks Hill Road and Dalton Road
 Horizontal Field of View: 160°
 Bearing: 33° (North East)

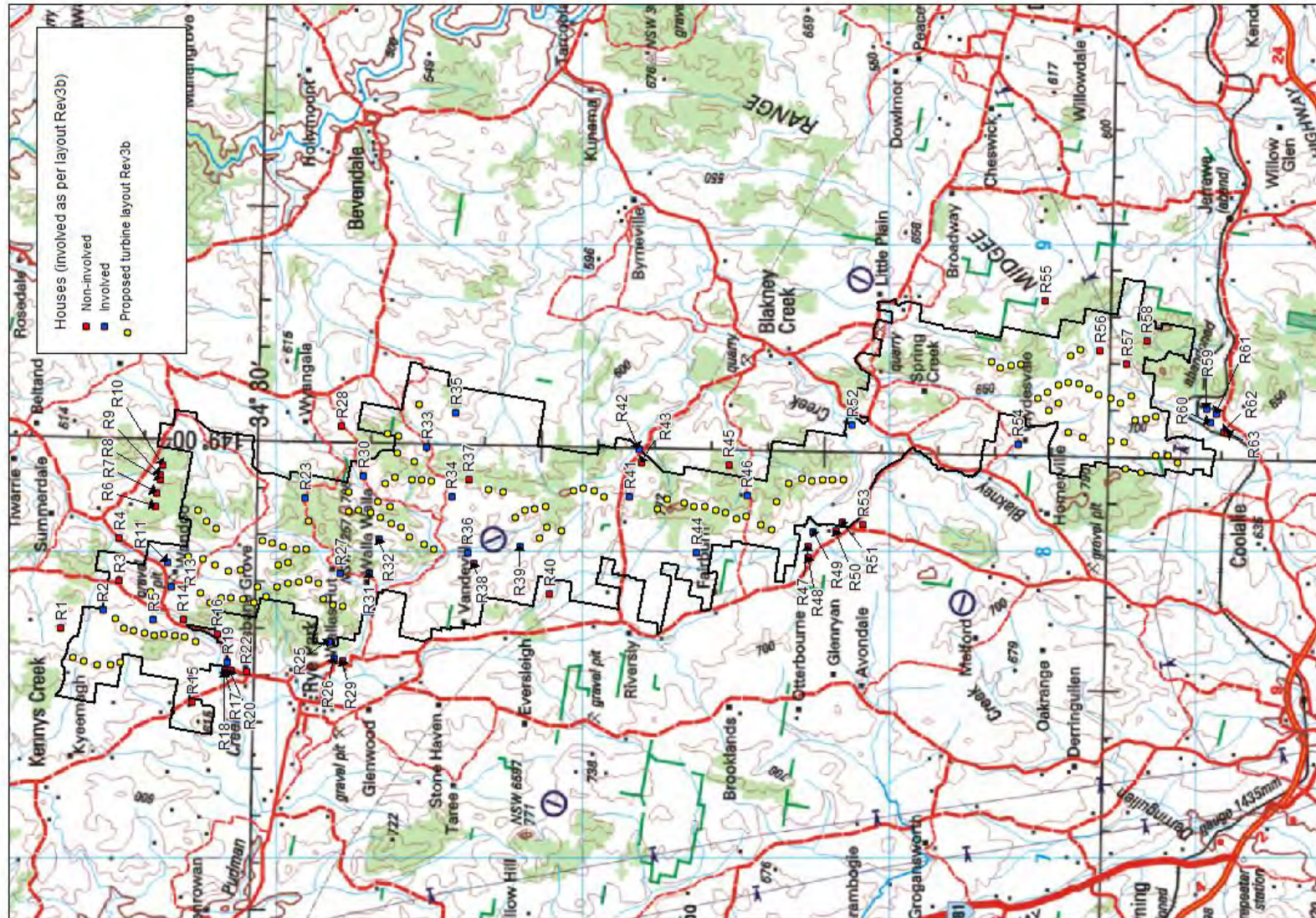


Viewpoint VP5 – Coolalie Road

Rye Park Wind Farm
 Photomontage 5, Coolalie Road
 Horizontal Field of View: 125°
 Bearing: 5° (North)

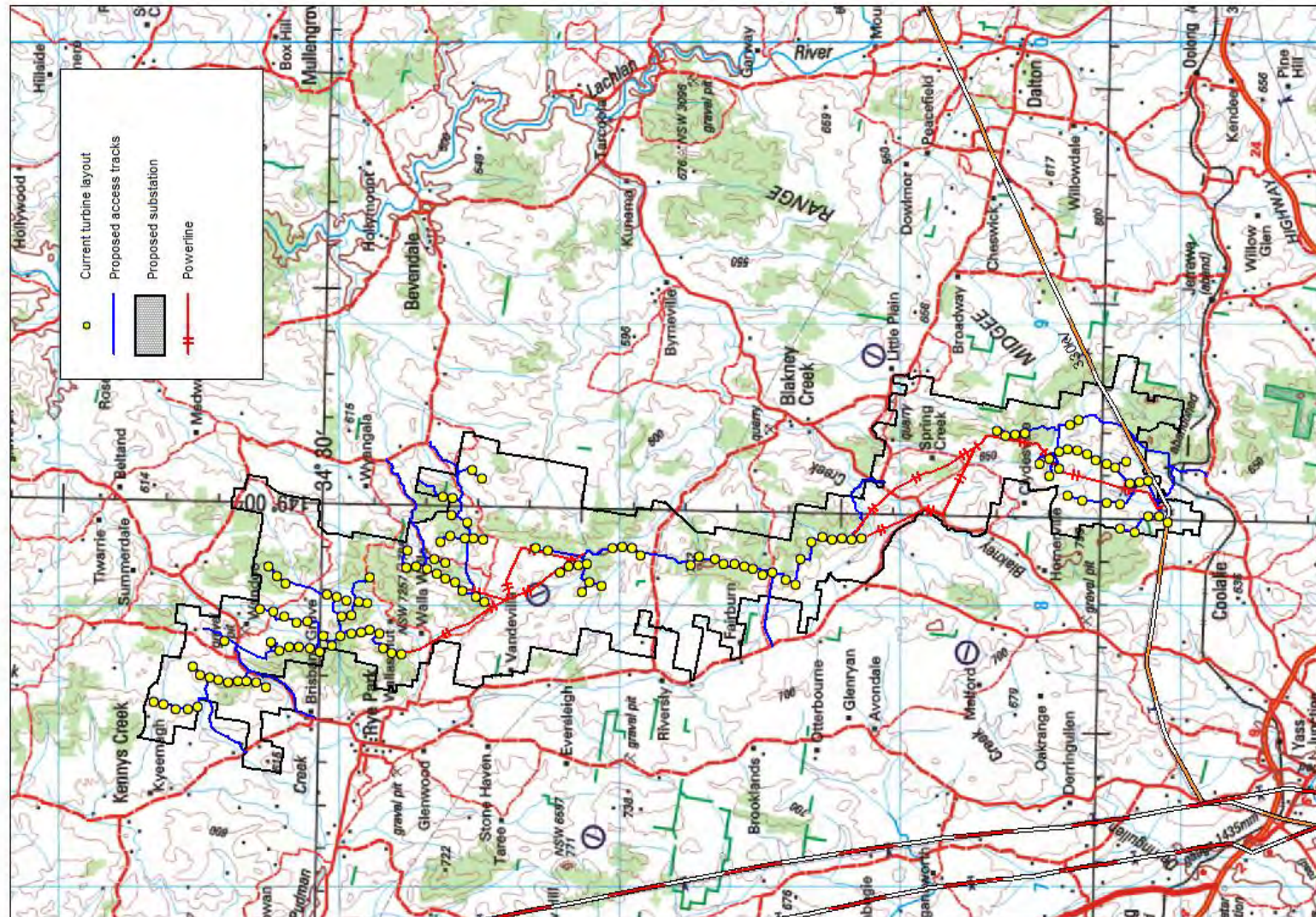
Project Information – Houses

- 27 involved landowner houses within 2km of wind turbine
- 33 uninvolved landowner houses within 2km of wind turbine



Project Information – Wind Farm Powerlines and Grid Connection

- Overhead powerlines required to link wind farm site
- On site grid connection substation land identified
- Existing Transgrid 330kV transmission line crosses south of site



Project Information – Likely Benefits (Preliminary Estimates)

- Project Investment Value \$750m-\$850m based on 393MW project (131x3MW)
 - 65% Wind Turbines = \$488m-\$552m
 - 35% Design and Construction = \$262m-\$298m
- Direct regional investment from construction – \$200m
- Direct regional investment from operations - \$15m per annum for 25 years
- Direct jobs during construction – approx 250 to 350
- Direct jobs during operations – approx 20 to 30
- Regional/state/national flow on effects, jobs and expenditure multipliers – TBC
- Carbon emissions abatement - TBC
- Community Fund – TBC (considered as part of consultation process)

Other Reference Documents

- NSW Draft Wind Farm Planning Guidelines - December 2011
- NHMRC (National Health & Medical Research Council) Review of Wind Turbines & Health - July 2010
- NSW Valuer General - Impact of Wind Farms on Property Values – August 2009
- DECCW (NSW Department of Environment, Climate Change & Water - Community Survey: “Community Attitudes to Wind Farms” – December 2010
- Clean Energy Council - Wind Farm Investment, Employment and Carbon Abatement in Australia (SKM) – June 2012

Next Steps and Timing

- Update layout & design July 2012
- Newsletter No 5 End July 2012
- Community Open Day End July 2012
- CCC Meeting No 2 TBC - 3pm Thursday 2 August 2012

Thank You



Ti Tree solar project

EPURON Pty Ltd

75 Miller Street
North Sydney
NSW 2060
AUSTRALIA

T +612 8456 7400
F +612 9922 6645

www.epuron.com.au



Cullerin range wind farm

Details for CCC meeting No 2
Venue: Yass Valley Council Chambers
Address: 209 Comur Street, Yass
Date: Thursday 2 August 2012
Time: 3.00pm to 4.30pm

EPURON

**Rye Park Wind Farm
Community Consultation Committee
Meeting No 2
2 August 2012**

Meeting Contents

1. **Review of CCC meeting No 1**
 - Summary of feedback and key issues
 - Summary of project information provided
2. **Community Consultation Committee update**
 - Membership update
 - Minutes of last meeting
3. **Rye Park Wind Farm – Current Development Status**
4. **Project Consultation**
 - Newsletter No 5
 - Public Open Day
 - Key consultation activity and timetable
5. **Project Information**
 - Layouts
 - Archaeology & Heritage
 - Traffic and Transport
 - Community Fund
 - Likely Benefits
 - Grid connection update
6. **Next Steps and Timing**

CCC Meeting No 1 - Summary of Feedback and Key Issues

- **Construction access roads and routes**
 - Ensure councils are consulted when draft Traffic & Transport Plan is released.
- **Construction roadwork**
 - Upper Lachlan Council expressed a desire to tender for construction roadwork package.
- **Community fund**
 - Seek community input on how to best establish fund and type of support required.
 - Councils/members discussed preferred models, contribution levels & support required.
- **Wind farm layout**
 - Members viewed current layout and layout evolution since project development commenced.
 - Study results and community feedback to feed into preparation of the final layout.
- **Photomontages**
 - Seven public road viewpoint photomontages were on display at the CCC meeting.
 - Photomontage will be prepared for dwellings within 2km of a turbine (subject to landowner).
- **Local support**
 - Members discussed local levels of support/opposition to project. Consultation is ongoing.
- **Increased participation on the CCC**
 - Letter to be sent to uninvolved landowners proximate to the site to inform about CCC.

CCC Meeting No 1 - Summary of Project Information Provided

- Corporate information about Epuron including background and track-record
- Rye Park wind farm project overview and development status
- Overview of Draft NSW Wind Farm Planning Guidelines and Part 3A Transitional Arrangements issued by the Department
- Details about the role and purpose of the Community Consultation Committee
- Status of project consultation activity and the project consultation plan
- Details about the project including
 - Project location, site boundary and landowners
 - Review of the project layout and its progression
 - Environmental constraint layers
 - Noise logging locations
 - Public road viewpoints and photomontages displayed
 - Involved and uninvolved houses
 - Overhead powerlines, access roads, construction infrastructure and substations
- A preliminary estimate of likely benefits from the project
- List of reference documents for further information

Rye Park Wind Farm – Current Development Status


- Release of final draft wind farm layout expected mid August (...next newsletter)
- Layout to incorporate consultation feedback and results of expert studies
- 2 seasons of spring/summer environmental surveys completed
- 9 day Archaeological field survey completed July 2012
- Noise logging campaign ~90% complete at involved and uninvolved dwellings
- Visual & Landscape study well underway (will include photomontages at 2km houses)
- Traffic and Transport Plan released for consultation
- Other studies including aviation, communications, shadow flicker etc well advanced
- Public Open Day held in Rye Park on Thursday 26 July from 9am to 5pm
- Targeting EA lodgement with Department in October
- Project details available at website www.epuron.com.au/projects/rye-park

Community Consultation Committee – Membership Update

- **Independent chairperson;**
 - Councillor David Needham
- **Involved landowners;**
 - Graham Privett
 - Greg Medway
- **Uninvolved landowners;**
 - Jenny and Chris Hally
 - Bev and Alex Davis
- **Local Group or Association;**
 - Geoffrey Minchin (interested party and employed by Boorowa CMA)
- **Local councils;**
 - Mayor Wendy Tuckerman – Boorowa Council
 - Councillor James Wheelwright – Upper Lachlan Council
 - Councillor David Needham – Yass Council
- **Epuron**
 - Brian Hall – Senior Project Manager

Project Consultation – Newsletter No 5

- o Released 10 July 2012
- o Information included;
 - Latest news & project development update
 - Update on CCC activity
 - Announced the public open day at Rye Park hall
 - Status of the environmental assessment process
 - Outlined project benefits available to the local region
 - Overview of overhead powerlines, grid connection and substations
 - Reminder of contact details for project feedback



Rye Park Wind Farm

Project Update No 5 | June - July 2012

Latest News

Development of the project is generally progressing to program and the key assessments, studies, and consultation activities are well underway. In the coming months the Environmental Assessment will be finalised with the communities ongoing input and is expected to be lodged with the Department around September/October in readiness for public exhibition.

Key development activity since the last newsletter in March includes;

- Summer environmental survey completed during March/April
- First community consultation committee meeting held 27 June
- Photomontages prepared from selected public road viewpoints
- Noise logging campaign underway at selected house locations
- Feedback from community and studies inform layout design
- Another wind monitoring mast to be installed on site in Aug/Sep


Community Consultation Committee

The first Community Consultation Committee (CCC) meeting for the wind farm was held at Yass Council Chambers on 27 June. Membership of the CCC seeks representation from local council, involved and uninvolved landowners, local community groups and the project proponent.

The CCC has been established as a forum for discussion and feedback on issues directly relating to the assessment and development of the wind farm. Councillor David Needham from Yass Valley Council is Chair of the CCC. Some key points of discussion and feedback arising from the first CCC meeting, in no particular order, include;

- **Access Roads.** Ensure Councils are consulted when the draft Traffic and Transport study is available to make sure construction access routes and any impacts on local roads are considered.
- **Community Fund.** Councils outlined their preferred model for a community fund if established for the project. The CCC is looking for feedback on how to best establish a community fund and what type of local support may be required from the project. The objective is to best maximise local and regional benefits available to the community.
- **CCC Consultation.** The CCC will write to neighbouring landowners to let them know the CCC has been established and to invite them to contribute or participate in future meetings.

Your views and ideas are important to us and we would be pleased to receive any feedback or comments you may have regarding the project. The next CCC meeting is scheduled for 2 August 2012. Details of the project and CCC meeting are available on the Epuron website at <http://www.epuron.com.au/downloads/>



Public Open Day coming to the Rye Park Memorial Hall

A Public Open Day for the proposed wind farm is planned for Thursday 26 July at the Rye Park Memorial Hall.

Please come along and view the information on display about the project. Your feedback is important to us and will be considered in the development of the project.

The Project Manager will be available throughout the day (9am to 5pm) to discuss the proposal and answer any questions you may have about the project.




The current wind farm layout and public road photomontages will be on display including general information about wind energy.


In order to best maximise local benefits from the project, Epuron is also seeking feedback as to how a "Community Fund" might be established, and what kind of local community support is required in the vicinity of the project. Your views and ideas are welcomed in this regard.

We look forward to seeing you at the Public Open Day.

Event: Public Open Day
Date: Thursday 26 July 2012
Time: Opens 9am and closes 5pm
Venue: Rye Park Memorial Hall

Please send us your feedback

<p>Write to us:  Rye Park Wind Farm Level 11, 75 Miller Street North Sydney NSW 2060</p>	<p>Email or Internet:  b.hall@epuron.com.au www.epuron.com.au</p>	<p>Phone us:  02 8456 7400</p>
--	---	--



Rye Park Wind Farm

Project Update | June - July 2012

Stages of the Environmental Assessment Process

1	Submission of the Preliminary Environmental Assessment and Request for Part 3A Assessment to the Department of Planning.
2	Director General's Requirements issued by the Department.
3	WE ARE HERE: Preparation and submission of the Environmental Assessment report to the Department.
4	Adequacy review by the Department to determine if the Environmental Assessment report is acceptable for exhibition.
5	Environmental Assessment report placed on public exhibition for review comment.
6	Epuron responds to submissions.
7	Assessment and Determination by the Minister

Preliminary wind farm photomontage at the corner of Coals Hill Road and Dalton Road

Likely Benefits from the Rye Park Wind Farm

A preliminary estimate of the likely benefits that would be available to the local and regional economy resulting from development of the Rye Park wind farm include the following;

- Total project investment value approx \$750m - \$850m based on 393MW project (131 x 3MW turbines).
- Direct regional investment from construction - \$200m.
- Direct regional investment from operations - \$15m per annum for ~25 years.
- Direct jobs during construction - approximately 250 to 350.
- Direct jobs during operations - approximately 20 to 30 for ~25 years.
- Regional/state/national flow on effects, jobs and expenditure multipliers are being assessed.
- Carbon abatement (eg. tonnes of CO₂) will be calculated as part of the layout completion works.
- Community Fund contributions are being assessed and considered as part of the consultation process.

Grid Connection, Wind Farm Powerlines & Substations

Renewable power generated by the wind farm will be collected and exported to the National Grid at the existing 330kV Transgrid transmission line that crosses the southern section of the site. A new connection substation will be constructed on site adjacent to the existing Transgrid transmission line to facilitate grid connection and export of the wind farms power.

A new overhead wind farm powerline will be constructed running up the site to collect the renewable power generated by the wind turbines and feed it to the new connection substation at the south of the site. Up to three new collection substations will be located up the wind farm site to collect the power from the wind turbines and feed power into the new wind farm powerline.

Project Consultation – Public Open Day 26 July

- **Public open day was advertised in;**
 - Boorowa News
 - Yass Tribune
 - Newsletter No 5
- **51 people attended the public open day;**
 - Majority of people were supportive
 - About 11 people were opposed
 - 12 people asked for follow up information
 - 3 people/companies registered their interest in construction jobs and tender contracts
- **Material displayed included;**
 - Latest wind farm layout
 - Photomontages from 7 public viewpoints
 - Map of transport & construction access routes
 - General wind farm and industry information
 - Recent newsletter and corporate information

Boorowa News Classifieds	
FOR SALE	PUBLIC NOTICES
<p>FORD COURIER Dual Cab with Canopy, BL80PZ, 160,000kms, good condition, \$7,500. 0428-863-467.</p> <p>LIGHTS, CEILING FANS, COOKWARE Gifts, Kitchenware. Four shops full at Lamps N Things, Cowra. Next to Bunnings.</p> <p>OLIVE TREE NURSERY CLOSING DOWN SALE, Mature Trees 5ft high \$22, also some smaller trees \$6.60. Phone:6382-3181.</p>	<p style="text-align: center;">electora commission</p> <p style="text-align: center;">BOOROWA COUNCIL ELECTION SATURDAY, 8TH SEPTEMBER 2012</p> <p>Thinking of nominating as a candidate for local Council?</p> <p>If you are considering nominating you should read this as a candidate you have certain obligations and report under law. Check the website www.votensw.info for further details.</p> <p>How to nominate for election as a Council</p> <p>To nominate as a Councillor, you must lodge a nomination and \$125 nomination deposit by 12 noon Wednesday, 8th 2012.</p> <p>Where do I get a nomination form?</p> <p>Nomination forms and other important nomination and information are available from the Returning Officer or New South Wales Electoral Commission www.votensw.info</p> <p>Candidate information sheets: Every candidate is required to lodge a candidate information sheet with their nomination.</p> <p>Grouping of candidates and group voting squares: more candidates may form a group. A group may, in certain circumstances, request a group voting square on the ballot. A request to form a group and have a group voting square ballot paper must be lodged with the Returning Officer noon Wednesday, 8th August 2012. See www.votensw.info publication 'Handbook – Parties, Groups, Candidates, Scrutineers at Local Government elections' for more details.</p> <p>Where and when to nominate</p> <p>Your nomination form and deposit must be lodged at Returning Officer at Young Town Hall, 189-205 Boorowa Young NSW 2594 or at the office of the council for which you intend to stand as a candidate, during business hours Monday, 30th July 2012 to 12 noon Wednesday, 8th August 2012.</p> <p style="text-align: center;">Returning Officer details</p> <p style="text-align: center;">Mary Moffitt Young Town Hall, 189-205 Boorowa Street, Young NSW</p> <p style="text-align: center;">Information: www.votensw.info or 1300 135 736</p> <p style="text-align: center;">For enquiries in languages other than English call our interpreting service 13 14 50 For hearing and speech impaired enquiries, call us via National Relay Service on 13 96 77</p>
GARAGE SALES	
<p>GARAGE SALE July 21, 68 Brial Street from 9.30am. Bric-a-brac. NO EARLY BIRDS.</p> <p>GARAGE SALE Lounge Suite, washing machine, brand new lawn mower, seeing is believing. 1 Jugiong Street.</p>	
PUBLIC NOTICES	
<p>YOUNG EYES OPTOMETRISTS will next visit Boorowa Hospital Tuesday, August 14, for appointment please Phone:6382-4000, also visiting Harden monthly.</p>	
<p>EPURON</p> <p>RYE PARK WIND FARM</p> <p>A Public Open Day for the proposed wind farm will be held on Thursday, July 26 at the Rye Park Memorial Hall.</p> <p>Please come along and view the information on display about the project.</p> <p>Your feedback is important to us and will be considered in the development of the project.</p> <p>The Project Manager will be available to answer any questions you may have about the project.</p> <p>The current wind farm layout and preliminary photomontages will be on display including general information about wind energy.</p> <p style="text-align: center;">Date: Thursday 26 July Time: 9am to 5pm Venue: Rye Park Memorial Hall</p>	

Project Consultation – Public Open Day 26 July

o Summary of positive points/comments expressed

- Good opportunity to capture local expenditure and investment
- Local jobs available during construction & long term operations
- Rye Park community could benefit from projects support
- We need more clean green energy to reduce reliance on coal
- I like the look of wind turbines in the district

o Summary of negative points/comments expressed

- I am concerned that my property value will reduce if built
- What about the health impacts from wind farms
- Wind turbines are noisy and will be annoying
- I don't want to see wind turbines from my house
- I am concerned Bango wind farm is also close to me



Project Consultation – Key Activity and Timetable

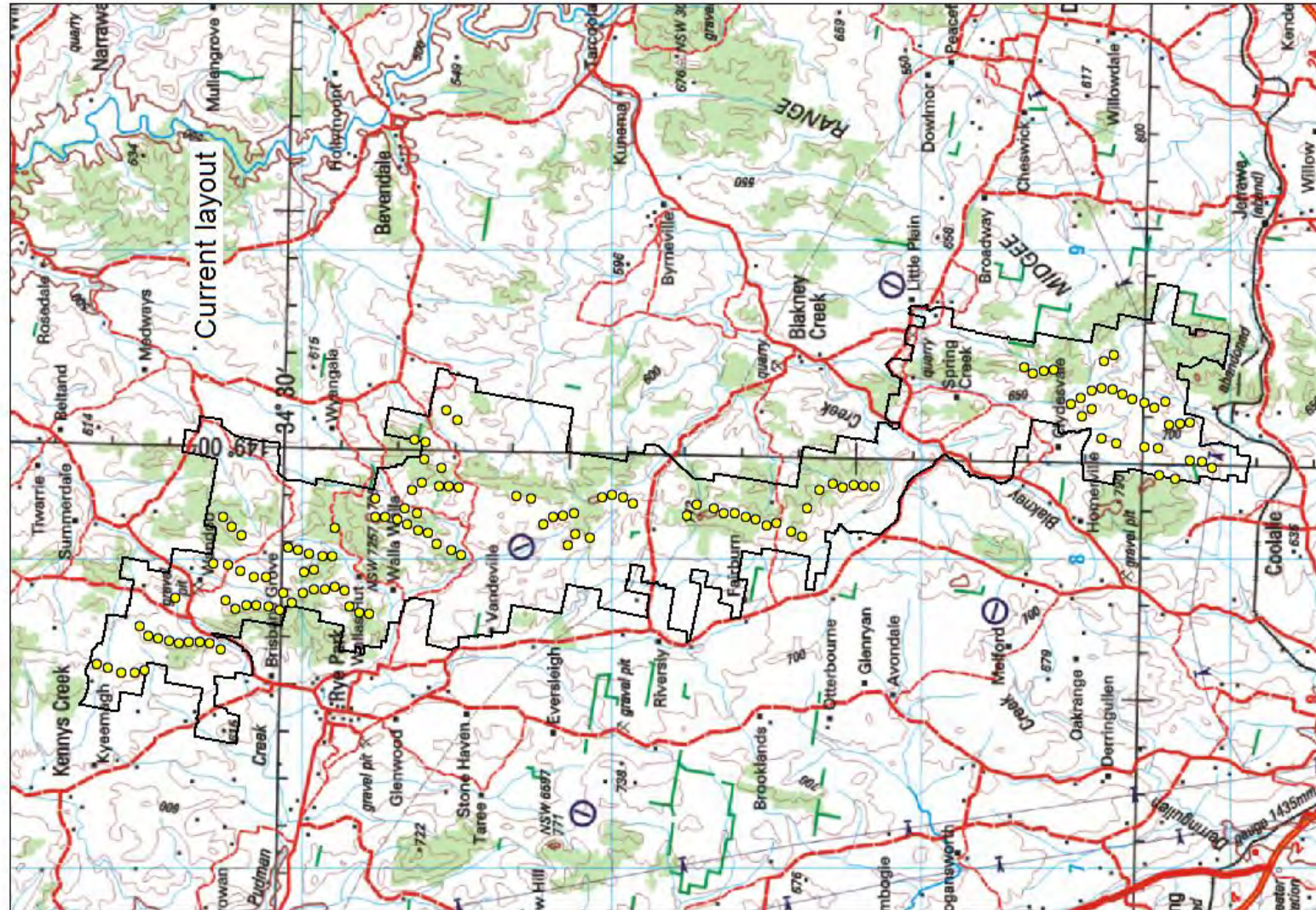
Activity	Timing	Objectives	Stakeholders	Status
Community information workshop	November 2008	Introduce Epuron and the proposal to landowners and community including preliminary layout	Involved landowners and selected stakeholders	Completed
Newsletter 1	December 2009	Inform community about project and initial information	Involved and uninvolved landowners (mail-out)	Completed
Newsletter 2	June 2010	Provide updated information and planning details including	Involved and uninvolved landowners (mail-out)	Completed
Newsletter 3	December 2011	Outline planning process and updated development progress	Involved and uninvolved landowners (mail-out)	Completed
Consult with neighbours within 2km	January / February 2012 (ongoing)	To discuss project and impacts with neighbours including feedback	Uninvolved neighbours within 2km of turbine	Completed (but ongoing)
Newsletter 4	March 2012	Advise consultation plans and release revised wind farm layout	Involved and uninvolved landowners (mail-out)	Completed
Establish Community Consultation Committee	April / May 2012	Establish formal mechanism for community participation	Invited members	Completed

Project Consultation – Key Activity and Timetable

Activity	Timing	Objectives	Stakeholders	Status
CCC Meeting 1	May / June 2012	Provide project information and seek feedback	Invited members	Completed
Newsletter 5 and Community Open House 1	June / July 2012	Update on studies and consultation and layout	Involved and uninvolved landowners (mail-out)	Completed
CCC Meeting 2	July / August 2012	Provide updated information and consider feedback including release of draft final layout	Invited members	To be held Thursday 2 August 2012
Newsletter 6 and Community Open House 2	September / October 2012	Update on studies and consultation feedback contributing to draft final layout	Involved and uninvolved landowners (mail-out)	pending
CCC Meeting 3	September / October 2012	Provide draft final documentation for review and feedback	Invited members	TBC – Monday 17 September 2012
Pre DA submission follow up	September / October 2012	Consider feedback and any final amendments required prior to lodging application	Involved and uninvolved landowners, CCC and consultants	pending

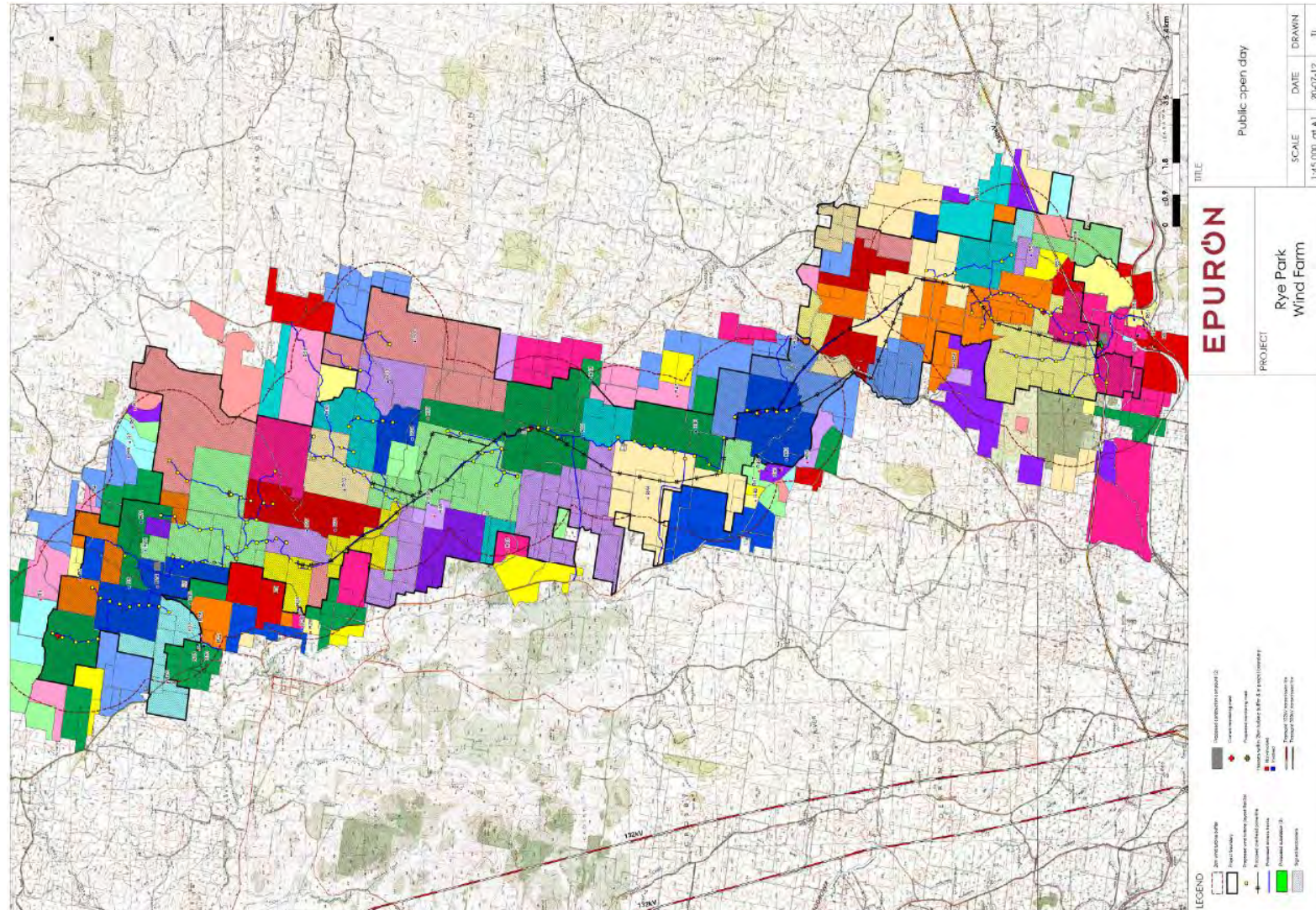
Project Information – Current Layout

- Current layout released March 2012
- Layout accommodates 131 wind turbines
- Based on 2011 environmental survey, 2 years of wind data, initial constraints analysis, land arrangements and early consultation feedback



Project Information – Current Layout updated for the Public Open Day

- Updated layout displayed at public open day included revised;
 - Access roads
 - Overhead powerlines and substations
 - Construction compounds
 - Additional wind monitoring mast
 - Houses layer
- Layout accommodates 131 turbines



Project Information – Archaeology & Heritage

- Consultation included 5 registered aboriginal parties;
 - Onerwal Local Aboriginal land Council
 - King Browns Tribal Group
 - Gunjeewong Cultural Heritage Aboriginal Corporation
 - Gundungurra Aboriginal Heritage Association Inc
 - Buru Ngunawal Aboriginal Corporation
- 9 day field survey completed during July 2012 and consultant assisted by Buru Ngunawal Aboriginal Corp.
- Preliminary results show proposed impact areas were assessed to be of low archaeological and heritage significance primarily due their location on very rocky ridgelines and situated away from streams and rivers.
- Aboriginal land use predicted to have been related to low levels of hunting, gathering and transit through country.
- Very low density of stone artefacts found to be present.
- Several milky quartz outcrops (raw material) were recorded and should be avoided during construction.



Project Information – Traffic & Transport Plan

o Plan released for consultation and assesses;

- Traffic and transport issues relevant to the construction & operation of the wind farm.
- Implications for the project and potential impacts.
- Proposed mitigation measures to minimise related impacts.
- Maximum traffic impacts during construction from heavy and oversized vehicles delivering equipment and material.
- Public road network proximate to the project.

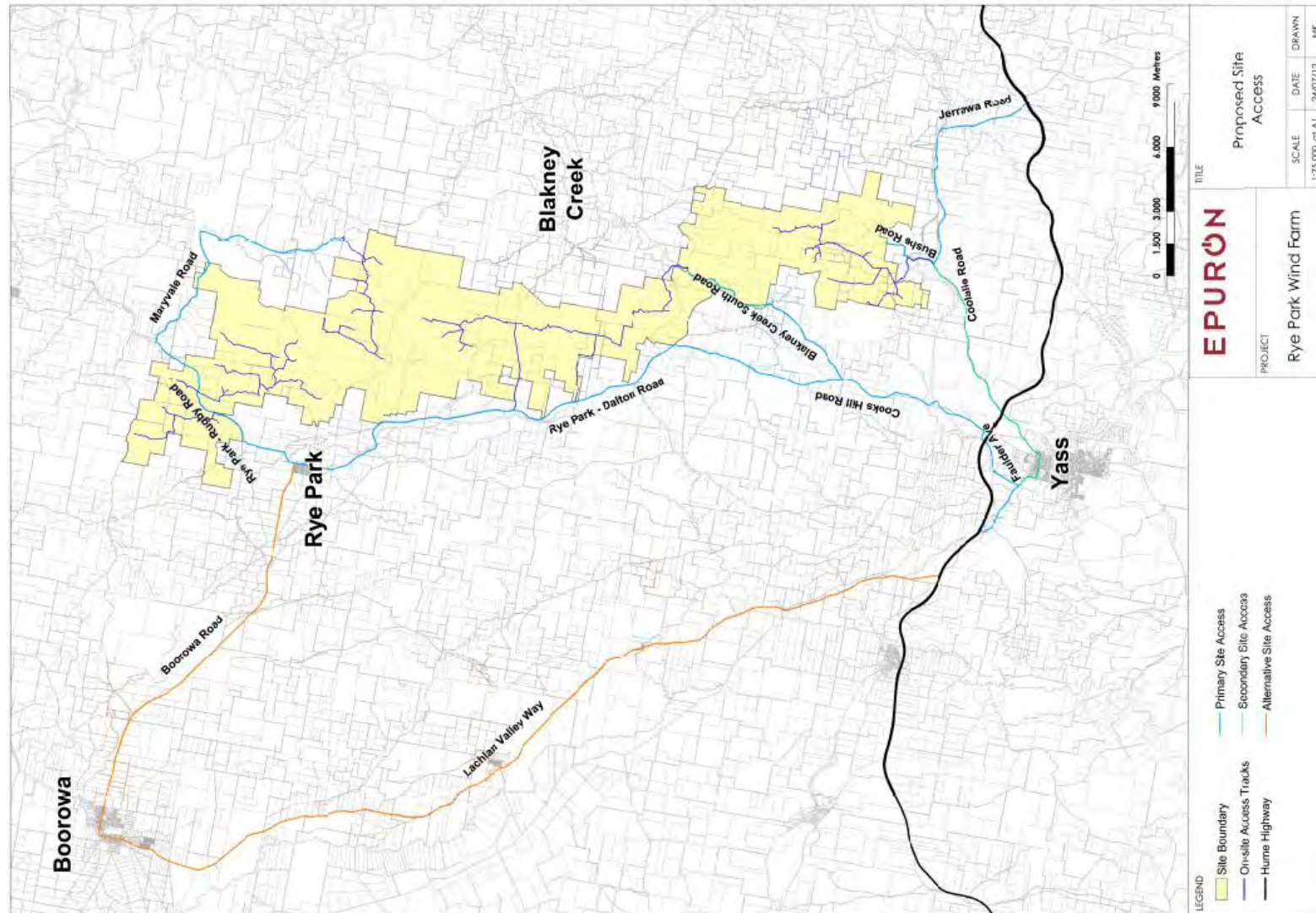
o Key issues addressed by the Plan;

- Suitability of existing roads for the type of vehicles that will need to access the site (road width, radius and bends etc).
- Structural capacity of existing roads and structures to handle the heavy vehicles for the delivery equipment and materials.
- Disturbance to the local community as a result of increased vehicle movements.
- Management of traffic on the site including traffic safety, minimising disturbance, erosion and dust.



Project Information – Traffic & Transport Access Roads & Routes

- Proposed construction access roads to site
- Construction compounds to be located at northern and southern ends of site
- Traffic and Transport Plan is available for consultation



Project Information – Community Fund

Epuron has been seeking feedback on how to best establish a community fund and to identify what type of local support is required from the project.

1. **Feedback.....”how to best establish a community fund”**

- Councils prefer that if a community fund is established it is managed by them.
- Community wants to have a say in where/how any community funds are spent.
- Draft Wind Guidelines say community infrastructure contributions may be required under Part 4, Division 6 of the EP&A Act 1979, or through a voluntary planning agreement (VPA) with a planning authority, including council.

2. **Feedback.....”what type of local support is required from the project”**

- Upgrade and improve local roads near the project
- Improvements to the township of Rye Park and better local amenities
- Better mobile phone reception and internet services
- Chance to reopen some businesses and local services in Rye Park
- Attracting new families to live in the local area

Project Information – Likely Benefits (updated preliminary estimates)

- Project Investment Value around **\$750m-\$850m** based on 393MW project
 - 65% Wind Turbines = \$488m-\$552m
 - 35% BoP Design and Construction = \$262m-\$298m
- Direct local/regional investment from construction – **\$200 million**
- Direct local/regional investment from operations - **\$15 million per annum for 25 years**
- Direct local/regional jobs during construction – **approx 250 to 350 Jobs**
- Direct local/regional jobs during operations – **approx 20 to 30 Jobs**
- Local/regional/state/national flow on effect multiplier (expenditure & jobs) – **approx 3.0**
- Carbon emissions abated – **approx 1,050,000 t CO₂e per annum**
- Community Fund – Epuron currently assessing feedback

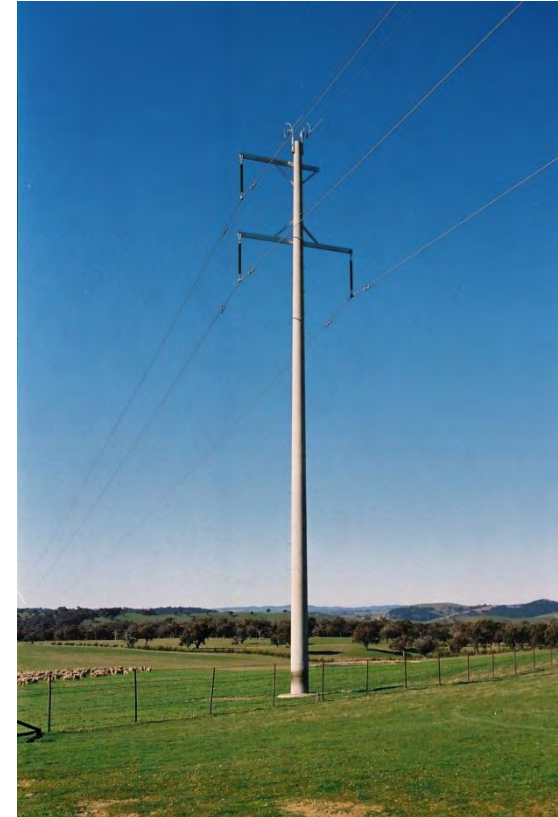
Rye Park Wind Farm – Grid Connection Update

- Wind farm will connect into the existing 330kV Transgrid transmission line that crosses the southern section of the site
- A new 330kV substation will be located adjacent to the existing Transgrid transmission line at the south of the site
- A new overhead powerline will run up the length of the wind farm site to collect the generated wind power.
- The new overhead powerline will be up to 132kV and will be mounted on a single pole type structure.
- 2 new connection substations will be constructed on the wind farm site.
- Power generated by the wind turbines will be reticulated to the 2 new connection substation via an underground electrical network.

Rye Park Wind Farm – Grid Connection Update



Example of 330kV transmission line tower structure



Example of 132kV powerline pole type structure

Next Steps and Timing

- Consultation and feedback - Ongoing
- Issue final draft layout - Mid August 2012
- Issue newsletter No 6 - End August 2012
- Hold public open day No 2 - Early September 2012
- Hold CCC meeting No 3 - 3pm Monday 17 September 2012
- Lodge EA - October

Communication and Feedback Channels Available

- Consultation is a two-way-street and we're always listening.
- Feedback and suggestions are important to us and help design the project.
- Available communication channels include;
 - Epuron corporate website: www.epuron.com.au
 - Rye Park project website: www.ryeparkwindfarm.com.au
 - Mailing address: Rye Park Wind Farm
Level 11, 75 Miller Street
North Sydney...NSW...2060
 - Phone: 02 8456 7400
 - Fax: 02 9922 6645
 - Email: RyePark@epuron.com.au
 - Senior Project Manager: Brian Hall
b.hall@epuron.com.au
 - Meetings Arranged by appointment

Thank You



Ti Tree solar project - NT

EPURON Pty Ltd

75 Miller Street
North Sydney
NSW 2060
AUSTRALIA

T +612 8456 7400
F +612 9922 6645

www.epuron.com.au



Cullerin range wind farm - NSW