

RYE PARK WIND FARM

Project Update - December 2009

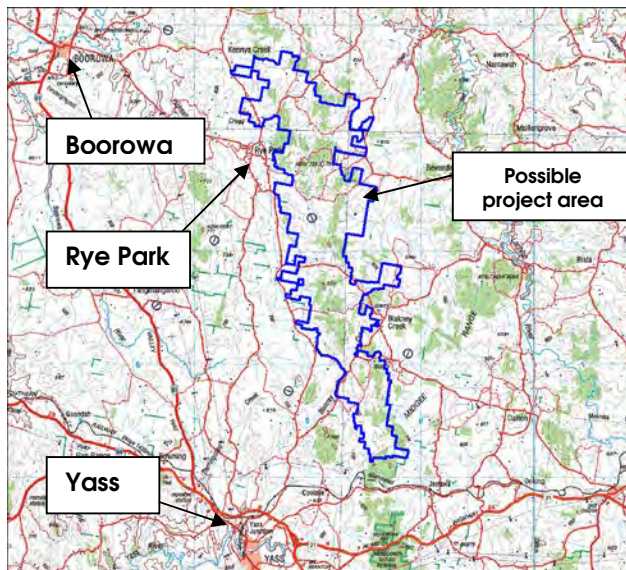
INTRODUCTION

Epuron wishes all a Merry Christmas and a Safe & Prosperous New Year.

WELCOME to the Rye Park Wind Farm Project Update. This Wind Farm Project is a new development project being considered by Epuron. The proposed wind farm is at the early stages of planning and geographical perimeters are still being considered.

PROJECT AREA

The Rye Park area is located in the region around Yass and Goulburn in South Eastern NSW.



Rye Park Proposed Project Area

approved wind power capacity in NSW. With a team of 17 operating from its North Sydney base, Epuron is currently in an exciting phase of growth and development.

SITE SELECTION

Why is this a good area for wind energy?

The area has a number of favourable conditions for the development of a wind farm, including;

- Relatively high wind speeds
- Cleared agricultural land
- Relatively few dwellings
- Access to transmission
- Community support

WHO IS EPURON?

Epuron is a leading wind energy developer in NSW having achieved planning approval for more than 1500MW of approved wind energy across 5 projects since 2005. Epuron is working on several projects, at various stages of development, totalling in excess of 2000MW, including the large scale Silverton project in western NSW. Epuron projects which have already received planning approval represent over 70% of





Epuron would like to thank the many local landholders who have provided & continue to provide their support and commitment to this exciting project.

WIND STRENGTH

Monitoring of the wind at the site has been occurring now for some time, with Epuron installing monitoring masts and anemometers to better understand the potential wind energy resource. The Rye Park site has 3 masts installed with the first mast installed almost exactly one year ago. This is a milestone for wind data collection as we like to have one year of data to help with the wind modelling.



Wind Monitoring Mast (Solar Powered)

Wind data collected from these masts and sent over the mobile phone network to Epuron's North Sydney office, is used to determine the extent of the energy available from the wind for generation of electricity. Ongoing wind monitoring and time-series data collected from the masts is continuing to be processed and used to calculate the wind characteristics. From this are determined the site's mean wind speeds and direction which in turn will help choose and position the optimal turbine layout.

SOLAR ENERGY

In other exciting news, Epuron is increasing its explorations of utility-scale solar energy options. The solar team is working on opportunities in NSW & elsewhere in



Australia. This is a new and exciting path for Epuron and we are currently investigating potential sites for Photovoltaic (PV) and Concentrated Solar Power (CSP) development.

INDUSTRY NEWS

Renewable Energy Target (RET)

In August of this year legislation to expand the Renewable Energy Target was passed by Federal Parliament. This means that 20% of Australia's electricity will come from renewable sources by 2020. This will enable wind farms around Australia to competitively price their electricity in order to complete development activities and commence construction.

Inquiry into Rural Wind Farms

The Parliament of NSW recently held an Inquiry into the social, environmental and economic costs of rural wind farms. The public were invited to participate and 109 public submissions were received by the Standing Committee. The first of three public hearings was held on 11 September in Sydney at which Epuron Executive Directors Martin Poole and Andrew Durran addressed the Committee. A full transcript can be found on the NSW Parliament site www.parliament.nsw.gov.au

*Epuron wishes you and your family
a very Merry Christmas
and a Happy New Year!!!*

CONTACT US

Contact: **Laura Dunphy** Project Manager
Phone: 0420 445 058
Email: L.Dunphy@epuron.com.au

Richard Finlay-Jones
Mobile: 0414 555 864



Computer Simulation - Silverton Project



RYE PARK WIND FARM

Project Update - June 2010

INTRODUCTION

WELCOME to the Rye Park Wind Farm Project Update. This newsletter is designed to provide a summary of the activities underway to further plan and develop this very exciting project.

In this newsletter we provide an update on the analysis of the wind resource, the progress with the grid connection, some feed-back from the ecology studies and an update on renewable energy policy.

PROJECT AREA

The Rye Park project area is located across the Boorowa LGA, Upper Lachlan Shire LGA and the Yass Valley LGA, near the township of Rye Park and north east of Yass.

The site comprises a long ridgeline running north-south, where it is expected the turbines could be located. This ridge is at right angles to the prevailing wind directions, which are predominantly the east and west (see Wind Frequency Rose below).

Approximately 40 local landowners have agreed to explore the feasibility of the proposal. This site is fairly large and could potentially accommodate over 100 wind turbines.



KEY FACTS

Why is this an excellent project?

- Good wind speeds – quantified resource
- Generally cleared agricultural land
- Access to the high capacity transmission network
- Close to an area with high electrical demand / load (Sydney Basin)
- Relatively large site – good fit with renewable energy policy
- Close to centres with industry capability
- Positive landowner and community support

This project will be a state significant renewable energy facility and investment.

WIND MONITORING

Epuron has operated three wind monitoring masts on site for over a year and across all seasons. The masts make a continuous record of wind speed and direction, and temperature and pressure of the air. This data is transmitted each night back to our North Sydney office. The on-site data has been correlated to Epuron's many long term data sets in the Yass area to establish long term predicted wind speed and direction. This information has been used to develop optimised wind turbine layouts that will maximise the energy generation from the project.

This weather data is extremely important to our understanding of the wind profile and the feasibility of a wind farm project. The good news is that the wind analysis confirms that the wind speeds at the site are good and the wind resource meets the thresholds required for progressing the development of the project.

Epuron will now refine the location of wind monitoring masts based on this information. Some of the masts may be relocated where they have fulfilled their purpose, rest assured that removal of a mast from any one area does not mean any loss of interest in developing wind in that area! We will keep you posted and work with you if any of this involves your property.

PROJECT PLANNING

Over the last few months our team of wind specialists and engineers have been refining the layout to optimise the energy yield and design a constructible site.

In addition to collecting wind data we have started to prepare for the process of gaining planning approval for the project. Epuron has already successfully carried out this process several times in NSW over the last 7 years, gaining approval for over 700 wind turbines.



In developing the most appropriate project design, it is important to take into consideration: terrain, accessibility, the electrical layout and design, ensuring amenity impacts (such as visual and noise impacts) are minimised, and ensuring biodiversity impacts (especially endangered ecological communities) are also minimised.

GRID CONNECTION

Epuron has completed its assessment of the most suitable grid connection options. This has been in conjunction with working through the physical layout of the site, as it all needs to work together. A technical feasibility study undertaken by Epuron's electrical engineering consultants has analysed the merits of each option.

Epuron is now progressing two connection options, one into the 132kV transmission line west of the site and another connection into the 330kV transmission line south of the site. Both options present excellent technical solutions to export the potential generation from the site with minimal electrical losses.

Epuron has now begun discussing the route options with potentially affected landowners. This landowner consultation is an important part of the process to understand specific issues and concerns and to finalising the power line route.

Our objective is to develop the very best project that we can considering all of the technical, environmental and social issues.



ECOLOGICAL STUDIES

Our environmental consultant has already completed a preliminary assessment and undertaken mapping of biodiversity in the project area to assist with our overall development plan.

In general the feedback has confirmed it is a good site from an ecological perspective. While there are some sensitive areas we will need to manage, there is adequate space to locate infrastructure including turbines, access roads and transmission lines.

The studies identified some native vegetation communities, such as Yellow Box or White Box Woodland, that require careful management. Epuron

has successfully managed similar issues on previous projects in NSW.

The next step is to get our consultants back on the site to complete their assessment of the specific areas where we would be looking at installing turbines, electrical connections and access tracks. The critical time for the flora and fauna studies is spring, so we are working towards kicking off this assessment to be completed this spring.

INDUSTRY NEWS

Renewable Energy Target (RET)

In August 2009 legislation to expand the Renewable Energy Target was passed by Federal Parliament. This means that 20% of Australia's electricity will come from renewable sources by 2020 enabling wind farms around Australia to sell clean electricity into the electricity market.

In February 2010, the Hon. Penny Wong announced further amendments to the RET legislation that provides separate targets for small/domestic renewable energy and large scale projects such as our wind farms. This is another very positive step for the establishment of new large clean energy projects, and we expect this legislation to be passed in June 2010.

If you follow current affairs you will have seen that the Government has delayed the introduction of an Emissions Trading Scheme (ETS). While this is disappointing from an environmental and climate change policy perspective, the development and delivery of the Rye Park Wind Farm is primarily driven by the RET.

NEXT STEPS

The current key activities underway include:

- Refining the wind monitoring program and relocating monitoring towers to suit;
- Finalising biodiversity surveys in Spring;
- Negotiating transmission line access corridors with affected landowners;
- Finalising site layouts taking into account these inputs as well as amenity impacts
- Engaging specialist consultants to commence studies for the Environmental Assessment

Over the coming months Epuron will lodge a project application for the project prior to completing the full environmental assessment on the site. We will update you again in due course.

Epuron would like to thank the many local landholders who have provided, and continue to provide their support and commitment to this exciting project.

CONTACT US

Laura Dunphy - Project Manager
Phone: 02 8456 7400
Email: L.Dunphy@epuron.com.au



Rye Park Wind Farm

Project Update No 3 | December 2011

Merry Christmas from the Epuron Team

As we draw to the end of a busy year for the Rye Park Wind Farm project, the Epuron team would like to wish you and your family a very merry Christmas. There is already much work planned for next year including continuation of the consultation program that will feed into finalisation of the projects Environmental Assessment. Thank you for your continued support of this exciting project and your positive feedback.

Project Update

Since our previous update Epuron has received notification of the Director-General's Requirements (DGRs) for the project from the NSW Department of Planning in February 2011. The issuing of the DGRs is in response to our submission of the project's Development Application and Preliminary Environmental Assessment earlier in the year. The DGRs set out the Departments key assessment criteria for the proposed wind farm and will contribute to the preparation of the project's Environmental Assessment. There are a number of detailed studies required by the DGRs to assess potential impacts of the project including noise, visual, traffic, ecological, heritage and a range of planning and statutory matters.

Our biodiversity consultants have just completed a spring-summer field survey across the development envelope for the project site in line with the DGRs. The biodiversity survey was comprehensive and included the assessment and mapping of flora and fauna communities. The survey results will inform the design of the wind farm layout and will contribute to the preparation of the Environmental Assessment expected to be exhibited next year.

Following assessment of the various grid connection options available to the Project we have identified the existing 330kV Transgrid powerline running across the southern section of the site as the preferred connection location. Investigations and discussions will continue with all powerline stakeholders to finalise suitable easement and substation positions.

We have also recently established "Rye Park Wind Farm Pty Ltd" as the company to carry out the development of the Project. The newly created company is a wholly owned subsidiary of Epuron and will hold the various assets required for development of the Project.

New Website

We are pleased to advise that a new project website will soon be available to view information about the project. You are also invited to submit any feedback you may have via the new website. The new website is due to be launched shortly so keep an eye out for it. Details of the project will be available at www.ryeparkwindfarm.com.au



Project Manager



Epuron is pleased to announce the recent appointment of Senior Project Manager Brian Hall as Project Manager for the

Rye Park Wind Farm. Brian brings a wealth of experience to the Epuron Team, having more than 20 years experience in the Australian and international energy industries.

Prior to joining Epuron in 2011, Brian held a number of senior roles in the renewable energy sector including head of Business Development in Australia with Meridian Energy and Director of Allco Wind Energy's global business. Brian was directly responsible for managing the development phase of the 420MW Macarthur Wind Farm in Victoria (largest in southern hemisphere at the time) that was committed to construction in 2010 under a Joint Venture with Meridian and AGL.


Please feel free to contact Brian if you have any queries regarding the Wind Farm.

Please send us your feedback

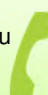
Write to us:

 Rye Park Wind Farm
Level 11, 75 Miller Street
North Sydney NSW 2060

Email or Internet:

 b.hall@epuron.com.au
www.epuron.com.au

Phone us:

 02 8456 7400



Consultation Plan

Epuron is a leading developer of wind farms in NSW and has a proven track record with four previous wind farm project applications already successfully approved. To date Epuron has achieved approval of the largest wind farm, the largest number of wind farms, and the largest number of wind turbines in NSW, making it one of the most experienced wind developers in Australia. As such Epuron considers community consultation and engagement with key stakeholders a vital part of the approval process and an important first step towards becoming a long term member of the community.

Recently Epuron has updated its corporate Consultation Framework for the development of wind farms. A project specific Consultation Plan has commenced for the Rye Park Wind Farm and incorporates the following high level objectives:

- Ensure the community is fully informed about the proposal, its likely impacts and benefits;
- Provide the community with sufficient notice and opportunity regarding upcoming events such as Open House days and exhibition periods;
- Provide multiple opportunities for dialogue and provision of feedback;
- Incorporation of feedback into the design where possible and demonstration where this has been achieved;
- Building positive trust based relationships with community and key stakeholders;
- Establish a Community Consultation Committee to actively engage with and provide a forum for wider community groups and Council to have their say.

The NSW Wind Farm Planning Guidelines are expected to be issued soon, and our Consultation Plan will be further refined and updated to reflect any additional requirements where required following its release.

New “Sodar” Technology for Wind Measurement

To confirm the viability of wind projects in NSW, Epuron has established an extensive network of wind monitoring masts. Data from this network plus the onsite masts confirms that wind speeds are good at Rye Park wind farm and more than sufficient for a viable wind farm. As the Rye Park wind farm site is large and to get a better understanding of the wind speed variations in the area, Epuron is planning to utilise its new “Sodar” technology. Sodar stands for “Sound Detection and Ranging” and is a small ground-mounted unit that can capture all the information available from a conventional wind monitoring mast. The Sodar we are using is designed and made in Australia for Australian conditions.



Figures 1 & 2. Typical outlook over wind farm environmental survey areas



Figure 3. Epuron's new Sodar technology

Rye Park

Wind Farm

Project Update No 4 | March - April 2012

Latest News

This newsletter marks the release of the project's revised wind farm layout shown over page. In designing the revised layout, the project development team met with adjacent and neighbouring landowners and residents to the wind farm to obtain and consider their feedback. Epuron's biodiversity experts have incorporated the revised layout in their second seasonal field survey which will form part of the Environmental Assessment report - expected to be exhibited later this year.

A preferred substation connection site has been identified at the existing 330kV Transgrid power line that crosses the southern end of the site.

Community Consultation Committee

While the project consultation process has been underway for some time, Epuron is now seeking to establish the Community Consultation Committee (CCC) in preparation for a first meeting in the coming months.

The purpose and objectives of the CCC are:

- To enable Epuron to formally provide the local community with information about the proposal;
- To enable the community to express and for Epuron to understand any concerns regarding the potential impacts of the proposal;
- To enable Epuron to consider whether and how to incorporate any suggestions and feedback into the design of the proposal;
- To demonstrate how and where feedback has been incorporated and resulted in amendments to the proposal; and,
- To formally advise potential community benefits that can be integrated into the proposal.

Membership of the CCC is targeted to include the following;

- An independent chairperson;
- A representative of the involved wind farm landowners;
- A representative of the non involved neighbouring landowners;
- Representation from key local stakeholder groups or associations;
- A representative from each of the local councils (Yass, Boorowa and Upper Lachlan); and
- Representatives from Epuron including the Project Manager.

If you are interested in joining the CCC, please complete the Nomination Form enclosed and return to us.

For further information on Epuron's Consultation Framework, please refer to our website at <http://www.epuron.com.au/downloads/>



High Quality Wind Resource on Site

The Rye Park site is located in a good wind resource area and the regular collection of wind data continues. The three wind monitoring masts installed in 2008 show that favourable wind speeds exist on the site.



The wind monitoring masts and instruments are regularly checked and maintained by our in-house team of experts. Plans are underway to expand the wind monitoring program with additional equipment to be installed in the coming months.

Public Open Day Coming Soon

We are currently preparing to hold a community Open Day. We will be displaying the revised layout and other information about the wind farm. We will advise the date and location in due course and look forward to seeing you there. Your views and feedback are important to us.

Please send us your feedback

Write to us:



Rye Park Wind Farm
Level 11, 75 Miller Street
North Sydney NSW 2060

Email or Internet:



b.hall@epuron.com.au
www.epuron.com.au

Phone us:

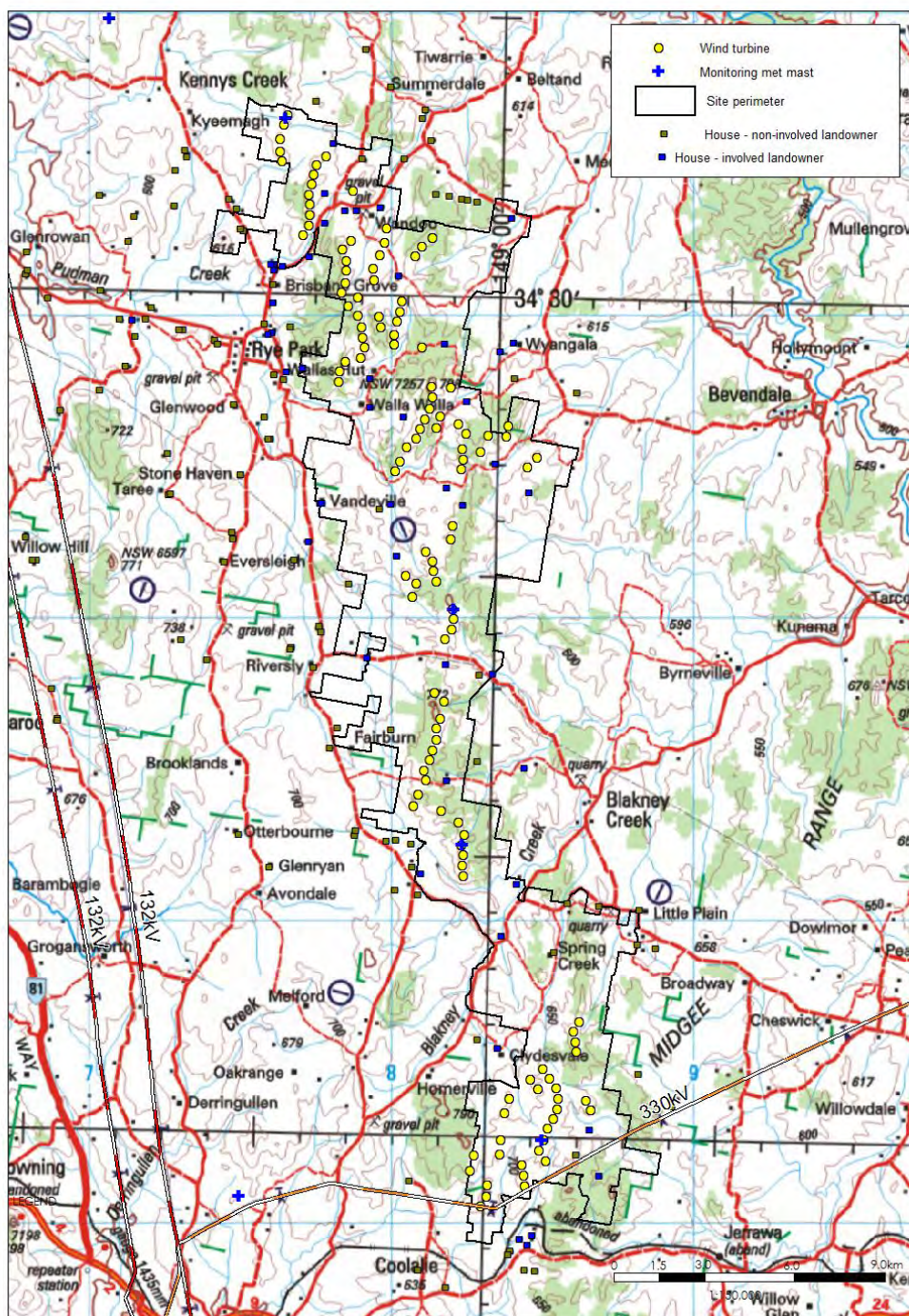


02 8456 7400

Revised Wind Farm Layout

The revised wind farm layout shown below accommodates 131 wind turbine locations across the site. Connection to the electricity grid will be at the southern end of the site at Transgrids existing 330kV network and a suitable location for a connection substation has been identified. In designing the revised layout, the development team consulted with the local community including meeting with adjacent and neighbouring landowners and residents to obtain and consider their feedback. The majority of the feedback supported the development of the wind farm as a mechanism for generating jobs and local investment in the region. Key areas of concern, which Epuron considered in the revised layout included:

- Meeting noise standards and considering the visual impact on neighboring dwellings;
- Increase distances between turbines, nearby homes and local towns for example Rye Park and Blakney Creek;
- Regard to be given to the draft NSW Planning Guidelines for Wind Farms.



Community Consultation Committee

Nomination Form

We are seeking nominations for members from the local community to join the Community Consultation Committee (CCC) for the Rye Park Wind Farm.

It is planned that the CCC will meet quarterly (or as otherwise required) at a local venue to be advised.

The purpose and objectives of the CCC are;

- To enable Epuron to formally provide the local community with information about the proposal;
- To enable the community to express and for Epuron to understand any concerns regarding the potential impacts of the proposal;
- To enable Epuron to consider whether and how to incorporate any suggestions and feedback into the design of the proposal;
- To demonstrate how and where feedback has been incorporated and resulted in amendments to the proposal; and,
- To formally advise potential community benefits that can be integrated into the proposal.

Nominees Role

Yes, I would like to nominate myself to join the CCC for the Rye Park wind farm in one of the following capacities.

Please tick the relevant box below.

- An independent chairperson
- A representative of the involved wind farm landowners
- A representative of the non involved neighbouring landowners
- Representation from key local stakeholder groups or associations (please provide details of group or association below)

Nominees Details

Name: _____

Address: _____

Phone: _____

Email: _____

Please provide reasons for your nomination: _____



Thank-You for your nomination

Should you require any further information please call us on **02 8456 700**.

Please return this Nomination Form to:



Address:

Rye Park Wind Farm
Level 11, 75 Miller Street
North Sydney NSW 2060



Email or Internet:

b.hall@epuron.com.au
www.epuron.com.au

Rye Park Wind Farm

Project Update No 5 | June - July 2012

Latest News

Development of the project is generally progressing to program and the key assessments, studies, and consultation activities are well underway. In the coming months the Environmental Assessment will be finalised with the communities ongoing input and is expected to be lodged with the Department around September/October in readiness for public exhibition.

Key development activity since the last newsletter in March includes;

- Summer environmental survey completed during March/April
- First community consultation committee meeting held 27 June
- Photomontages prepared from selected public road viewpoints
- Noise logging campaign underway at selected house locations
- Feedback from community and studies inform layout design
- Another wind monitoring mast to be installed on site in Aug/Sep

Community Consultation Committee

The first Community Consultation Committee (CCC) meeting for the wind farm was held at Yass Council Chambers on 27 June. Membership of the CCC seeks representation from local council, involved and uninvolved landowners, local community groups and the project proponent.

The CCC has been established as a forum for discussion and feedback on issues directly relating to the assessment and development of the wind farm. Councillor David Needham from Yass Valley Council is Chair of the CCC. Some key points of discussion and feedback arising from the first CCC meeting, in no particular order, include;

- **Access Roads.** Ensure Councils are consulted when the draft Traffic and Transport study is available to make sure construction access routes and any impacts on local roads are considered.
- **Community Fund.** Councils outlined their preferred model for a community fund if established for the project. The CCC is looking for feedback on how to best establish a community fund and what type of local support may be required from the project. The objective is to best maximise local and regional benefits available to the community.
- **CCC Consultation.** The CCC will write to neighbouring landowners to let them know the CCC has been established and to invite them to contribute or participate in future meetings.

Your views and ideas are important to us and we would be pleased to receive any feedback or comments you may have regarding the project. The next CCC meeting is scheduled for 2 August 2012. Details of the project and CCC meeting are available on the Epuron website at <http://www.epuron.com.au/downloads/>



Public Open Day coming to the Rye Park Memorial Hall

A Public Open Day for the proposed wind farm is planned for Thursday 26 July at the Rye Park Memorial Hall.

Please come along and view the information on display about the project. Your feedback is important to us and will be considered in the development of the project.

The Project Manager will be available throughout the day (9am to 5pm) to discuss the proposal and answer any questions you may have about the project.

The current wind farm layout and public road photomontages will be on display including general information about wind energy.

In order to best maximise local benefits from the project, Epuron is also seeking feedback as to how a "Community Fund" might be established, and what kind of local community support is required in the vicinity of the project. Your views and ideas are welcomed in this regard.

We look forward to seeing you at the Public Open Day.

Event: Public Open Day

Date: Thursday 26 July 2012

Time: Opens 9am and closes 5pm

Venue: Rye Park Memorial Hall

Please send us your feedback

Write to us:

Rye Park Wind Farm
Level 11, 75 Miller Street
North Sydney NSW 2060

Email or Internet:

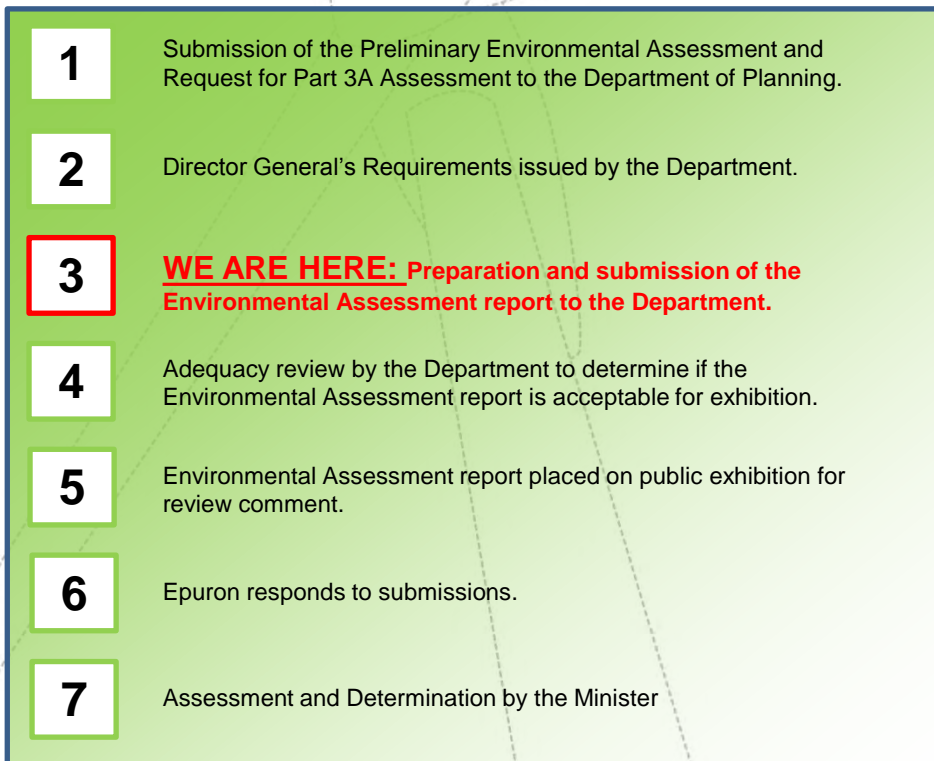
b.hall@epuron.com.au
www.epuron.com.au

Phone us:

02 8456 7400



Stages of the Environmental Assessment Process



Preliminary wind farm photomontage at the corner of Cooks Hill Road and Dalton Road

Likely Benefits from the Rye Park Wind Farm

A preliminary estimate of the likely benefits that would be available to the local and regional economy resulting from development of the Rye Park wind farm include the following;

- Total project investment value approx \$750m - \$850m based on 393MW project (131 x 3MW turbines).
- Direct regional investment from construction – \$200m.
- Direct regional investment from operations - \$15m per annum for ~25 years.
- Direct jobs during construction – approximately 250 to 350.
- Direct jobs during operations – approximately 20 to 30 for ~25 years.
- Regional/state/national flow on effects, jobs and expenditure multipliers are being assessed.
- Carbon abatement (eg. tonnes of CO₂) will be calculated as part of the layout completion works.
- Community Fund contributions are being assessed and considered as part of the consultation process.

Grid Connection, Wind Farm Powerlines & Substations

Renewable power generated by the wind farm will be collected and exported to the National Grid at the existing 330kV Transgrid transmission line that crosses the southern section of the site. A new connection substation will be constructed on site adjacent to the existing Transgrid transmission line to facilitate grid connection and export of the wind farms power.

A new overhead wind farm powerline will be constructed running up the site to collect the renewable power generated by the wind turbines and feed it to the new connection substation at the south of the site. Up to three new collection substations will be located up the wind farm site to collect the power from the wind turbines and feed power into the new wind farm powerline.

Rye Park Wind Farm

Project Update No 6 | August 2012

Project Update

It has been a busy and productive few months for the development of the wind farm. We have been incorporating findings from our specialist studies, including consultation feedback from the community, into the design of the wind farm. We anticipate a final draft layout of the wind farm will be prepared and released in the coming months. The environmental assessment document is currently being prepared and is expected to be lodged with government for public exhibition later in the year.

Archaeological & Heritage Field Survey

Following consultation with 5 locally registered Aboriginal groups, our archaeological and heritage consultant completed a 9 day field survey during July and was assisted by the Buru Ngunawal Aboriginal Corporation.

Preliminary results show the proposed impact areas to be of low archaeological and heritage significance, primarily due to their location on very rocky ridgelines, situated away from streams and rivers. A very low density of stone artefacts was found to be present on the site during the field survey (photo shown below).

Several milky quartz outcrops were recorded on the site that may have been historically exploited as sources of raw material. It has been recommended that impacts to these outcrop areas be avoided where possible during construction (photo shown below).



Community Consultation Committee

The Community Consultation Committee (CCC) established for the project met again in Yass on 2 August. A few new members, both involved and uninvolved landowners, attended the meeting. The latest project information was presented and points discussed at the meeting included;

- Release of the traffic and transport plan for consultation
- Update and feedback on the potential for a community fund
- Feedback from the recent public open day
- Details for connecting the wind farm to the electricity grid

Project details can be found at www.epuron.com.au/project/rye-park/



Public Open Day was a Success

Thank you to all those people who attended the wind farm public open day in Rye Park on 26 July.

The open day was a great success with 51 people attending and viewing the project information on display, which included;

- Wind farm layout with 131 turbine locations.
- Seven photomontages from selected public viewpoints.
- Traffic and transport route and access map.
- General wind farm and industry information.
- Other project and corporate information.

The majority of people who attended the open day (78%) were supportive of the project and the potential benefits available to the town of Rye Park and the local region. The opportunity to capture local jobs and investment expenditure was considered a key benefit of the project.

Members of the development team were pleased to discuss the project and answer your questions. The feedback received on the day will be considered in the design of the project wherever possible and we expect to release a final layout in the coming months.

Please send us your feedback

Write to us:

Rye Park Wind Farm
Level 11, 75 Miller Street
North Sydney NSW 2060

Email or Internet:

b.hall@epuron.com.au
www.epuron.com.au

Phone us:

02 8456 7400



Community Fund

We would like to thank everyone who has contributed their feedback to us regarding the potential to establish a community fund for the project. Over the past few months we have been consulting and seeking feedback on how best to establish a community fund and to identify what type of local support is required from the project.

The following is a summary of the key feedback we received on these two points and will be considered during the preparation of the project's environmental assessment that will be publicly exhibited later in the year.

1. Feedback received.....How best to establish a community fund

- Local councils prefer that if a community fund is established it is managed by them.
- Local community wants to have a say in where and how any community funds are managed and spent.
- Draft NSW Wind Guidelines say community infrastructure contributions may be required under Part 4, Division 6 of the EP&A Act 1979, or through a voluntary planning agreement (VPA) with a planning authority, including council.
- Community funds for some other projects have been considered through a mechanism that combines involvement from representatives of both the local community and council.

2. Feedback received.....Identify what type of local support is required from the project

- Upgrade and improve local roads near the project.
- Improvements to the township of Rye Park and better local amenities.
- Better mobile phone reception and internet services in the town.
- Chance to reopen some businesses and local services in Rye Park.
- Community must "go deeper" and provide attraction to keep families and younger people in the area through long term benefits and job creation



Traffic and Transport Report

The traffic and transport report for the project has been released for consultation. A copy of the report can be found on our website and the report assesses the;

- Traffic and transport issues relevant to the construction & operation of the wind farm.
- Implications of the project and potential impacts.
- Proposed mitigation measures to minimise related impacts.
- Maximum traffic impacts predicted during construction from heavy and oversized vehicles delivering equipment and material.
- Public road network proximate to the project.

Key issues addressed by the report include;

- Suitability of the existing roads for the type of heavy and oversized vehicles that will need to access the site (road type, width, radius of bends etc).
- Structural capacity of existing roads and structures, such as bridges, to handle the heavy and oversized vehicles for the delivery of equipment and materials.
- Disturbance to the local community as a result of increased vehicle movements.
- Management of traffic on the site including traffic safety, minimising ground disturbance, erosion and dust.



Rye Park Wind Farm

Project Update No 7 | May 2013

Project Update

The Environmental Assessment (EA) for the Rye Park wind farm has been finalised and was submitted to the NSW Department of Planning & Infrastructure (DPI) for assessment just prior to Christmas. This milestone was the culmination of a number of development activities including the incorporation of results from our specialist studies into the EA and the inclusion of community consultation feedback into the layout of the wind farm. The EA is in the process of being reviewed for adequacy by DPI and is expected to be publicly exhibited in the near future. Further announcements will be made regarding public exhibition of the EA once details are known.

In the meantime we remain interested to receive any feedback or comments you may have regarding the project and contact details are listed below.

Environmental Assessment Submitted

As mentioned above, the EA has been submitted and will be publicly exhibited in the near future following adequacy review by the DPI.

The EA was prepared to assess the potential environmental impacts and highlight the key benefits associated with the development of the wind farm. The EA will be assessed by the DPI as a Major Project under Part 3A of the NSW Environmental Planning and Assessment Act 1979.

We believe the Rye Park Wind Farm project is supported by a majority of people living in the local community and trust that the public exhibition of the EA will allow the community to continue to make informed decisions about the merits of the project.

The EA comprises a main report which sets out in detail the environmental assessment for the project (volume 1) and additional project information (such as maps and consultant reports) in the form of attachments and appendices (volume 2). The main report covers both the turbines and powerline routes.

We would like to take this opportunity to thank the many stakeholders and community members who have contributed to the EA by providing their suggestions and feedback on the project all of which have been very helpful in producing, what we believe, is a thorough and well developed wind farm.



Community Consultation Committee

The Community Consultation Committee (CCC) established for the project held its fourth meeting in Yass on 17 December 2012.

The latest project information was presented and discussed at the meeting. Details of CCC meetings and minutes can be found at www.epuron.com.au/project/rye-park/downloads/. The next CCC meeting will be held during public exhibition of the EA - date TBC.

Wind Farm Sound & Health

A recent report released by the Victorian Department of Health has found that the inaudible sound caused by wind farms, known as infrasound, is no worse than that from other rural and urban environments and does not affect human health.

The Health Department review, assessed the evidence and found it does not support claims that inaudible sounds can have direct physiological effects.

The report says infrasound is generated by many sources, such as trains, breaking waves and airconditioners. The department found the evidence showed wind farms produced no more infrasound than the background level in other environments.

A copy of the report can be found on the departments website at www.health.vic.gov.au/.

Please send us your feedback

Write to us:

Rye Park Wind Farm
Level 11, 75 Miller Street
North Sydney NSW 2060



Email or Internet:

b.hall@epuron.com.au
www.epuron.com.au

Phone us:

02 8456 7400



Wind Farm Layout

The following wind farm layout forms part of the EA submitted to DPI and incorporates results from our specialist studies and community consultation feedback.

