

Details for CCC meeting No 2
Venue: Yass Valley Council Chambers
Address: 209 Comur Street, Yass
Date: Thursday 2 August 2012
Time: 3.00pm to 4.30pm

EPURON

**Rye Park Wind Farm
Community Consultation Committee
Meeting No 2
2 August 2012**

Meeting Contents

1. **Review of CCC meeting No 1**
 - Summary of feedback and key issues
 - Summary of project information provided
2. **Community Consultation Committee update**
 - Membership update
 - Minutes of last meeting
3. **Rye Park Wind Farm – Current Development Status**
4. **Project Consultation**
 - Newsletter No 5
 - Public Open Day
 - Key consultation activity and timetable
5. **Project Information**
 - Layouts
 - Archaeology & Heritage
 - Traffic and Transport
 - Community Fund
 - Likely Benefits
 - Grid connection update
6. **Next Steps and Timing**

CCC Meeting No 1 - Summary of Feedback and Key Issues

- **Construction access roads and routes**
 - Ensure councils are consulted when draft Traffic & Transport Plan is released.
- **Construction roadwork**
 - Upper Lachlan Council expressed a desire to tender for construction roadwork package.
- **Community fund**
 - Seek community input on how to best establish fund and type of support required.
 - Councils/members discussed preferred models, contribution levels & support required.
- **Wind farm layout**
 - Members viewed current layout and layout evolution since project development commenced.
 - Study results and community feedback to feed into preparation of the final layout.
- **Photomontages**
 - Seven public road viewpoint photomontages were on display at the CCC meeting.
 - Photomontage will be prepared for dwellings within 2km of a turbine (subject to landowner).
- **Local support**
 - Members discussed local levels of support/opposition to project. Consultation is ongoing.
- **Increased participation on the CCC**
 - Letter to be sent to uninvolved landowners proximate to the site to inform about CCC.

CCC Meeting No 1 - Summary of Project Information Provided

- Corporate information about Epuron including background and track-record
- Rye Park wind farm project overview and development status
- Overview of Draft NSW Wind Farm Planning Guidelines and Part 3A Transitional Arrangements issued by the Department
- Details about the role and purpose of the Community Consultation Committee
- Status of project consultation activity and the project consultation plan
- Details about the project including
 - Project location, site boundary and landowners
 - Review of the project layout and its progression
 - Environmental constraint layers
 - Noise logging locations
 - Public road viewpoints and photomontages displayed
 - Involved and uninvolved houses
 - Overhead powerlines, access roads, construction infrastructure and substations
- A preliminary estimate of likely benefits from the project
- List of reference documents for further information

Rye Park Wind Farm – Current Development Status

- Release of final draft wind farm layout expected mid August (....next newsletter)
- Layout to incorporate consultation feedback and results of expert studies
- 2 seasons of spring/summer environmental surveys completed
- 9 day Archaeological field survey completed July 2012
- Noise logging campaign ~90% complete at involved and uninvolved dwellings
- Visual & Landscape study well underway (will include photomontages at 2km houses)
- Traffic and Transport Plan released for consultation
- Other studies including aviation, communications, shadow flicker etc well advanced
- Public Open Day held in Rye Park on Thursday 26 July from 9am to 5pm
- Targeting EA lodgement with Department in October
- Project details available at website www.epuron.com.au/projects/rye-park

Community Consultation Committee – Membership Update

- **Independent chairperson;**
 - Councillor David Needham
- **Involved landowners;**
 - Graham Privett
 - Greg Medway
- **Uninvolved landowners;**
 - Jenny and Chris Hally
 - Bev and Alex Davis
- **Local Group or Association;**
 - Geoffrey Minchin (interested party and employed by Boorowa CMA)
- **Local councils;**
 - Mayor Wendy Tuckerman – Boorowa Council
 - Councillor James Wheelwright – Upper Lachlan Council
 - Councillor David Needham – Yass Council
- **Epuron**
 - Brian Hall – Senior Project Manager

Project Consultation – Newsletter No 5

- o Released 10 July 2012
- o Information included;
 - Latest news & project development update
 - Update on CCC activity
 - Announced the public open day at Rye Park hall
 - Status of the environmental assessment process
 - Outlined project benefits available to the local region
 - Overview of overhead powerlines, grid connection and substations
 - Reminder of contact details for project feedback



Rye Park Wind Farm

Project Update No 5 | June - July 2012

Latest News

Development of the project is generally progressing to program and the key assessments, studies, and consultation activities are well underway. In the coming months the Environmental Assessment will be finalised with the communities ongoing input and is expected to be lodged with the Department around September/October in readiness for public exhibition.

Key development activity since the last newsletter in March includes;

- Summer environmental survey completed during March/April
- First community consultation committee meeting held 27 June
- Photomontages prepared from selected public road viewpoints
- Noise logging campaign underway at selected house locations
- Feedback from community and studies inform layout design
- Another wind monitoring mast to be installed on site in Aug/Sep

Community Consultation Committee

The first Community Consultation Committee (CCC) meeting for the wind farm was held at Yass Council Chambers on 27 June. Membership of the CCC seeks representation from local council, involved and uninvolved landowners, local community groups and the project proponent.

The CCC has been established as a forum for discussion and feedback on issues directly relating to the assessment and development of the wind farm. Councillor David Needham from Yass Valley Council is Chair of the CCC. Some key points of discussion and feedback arising from the first CCC meeting, in no particular order, include;

- **Access Roads.** Ensure Councils are consulted when the draft Traffic and Transport study is available to make sure construction access routes and any impacts on local roads are considered.
- **Community Fund.** Councils outlined their preferred model for a community fund if established for the project. The CCC is looking for feedback on how to best establish a community fund and what type of local support may be required from the project. The objective is to best maximise local and regional benefits available to the community.
- **CCC Consultation.** The CCC will write to neighbouring landowners to let them know the CCC has been established and to invite them to contribute or participate in future meetings.

Your views and ideas are important to us and we would be pleased to receive any feedback or comments you may have regarding the project. The next CCC meeting is scheduled for 2 August 2012. Details of the project and CCC meeting are available on the Epuron website at <http://www.epuron.com.au/downloads/>



Public Open Day coming to the Rye Park Memorial Hall

A Public Open Day for the proposed wind farm is planned for Thursday 26 July at the Rye Park Memorial Hall.

Please come along and view the information on display about the project. Your feedback is important to us and will be considered in the development of the project.

The Project Manager will be available throughout the day (9am to 5pm) to discuss the proposal and answer any questions you may have about the project.


The current wind farm layout and public road photomontages will be on display including general information about wind energy.


In order to best maximise local benefits from the project, Epuron is also seeking feedback as to how a "Community Fund" might be established, and what kind of local community support is required in the vicinity of the project. Your views and ideas are welcomed in this regard.

We look forward to seeing you at the Public Open Day.

Event: Public Open Day
Date: Thursday 26 July 2012
Time: Opens 9am and closes 5pm
Venue: Rye Park Memorial Hall

Please send us your feedback

<p>Write to us:  Rye Park Wind Farm Level 11, 75 Miller Street North Sydney NSW 2060</p>	<p>Email or Internet:  b.hall@epuron.com.au www.epuron.com.au</p>	<p>Phone us:  02 8456 7400</p>
--	---	--




Rye Park Wind Farm

Project Update June - July 2012

Stages of the Environmental Assessment Process

1	Submission of the Preliminary Environmental Assessment and Request for Part 3A Assessment to the Department of Planning.
2	Director General's Requirements issued by the Department.
3	WE ARE HERE: Preparation and submission of the Environmental Assessment report to the Department.
4	Adequacy review by the Department to determine if the Environmental Assessment report is acceptable for exhibition.
5	Environmental Assessment report placed on public exhibition for review comment.
6	Epuron responds to submissions.
7	Assessment and Determination by the Minister



Preliminary wind farm photomontage at the corner of Cooks Hill Road and Dalton Road

Likely Benefits from the Rye Park Wind Farm

A preliminary estimate of the likely benefits that would be available to the local and regional economy resulting from development of the Rye Park wind farm include the following;

- Total project investment value approx \$750m - \$850m based on 393MW project (131 x 3MW turbines).
- Direct regional investment from construction - \$200m.
- Direct regional investment from operations - \$15m per annum for ~25 years.
- Direct jobs during construction - approximately 250 to 350.
- Direct jobs during operations - approximately 20 to 30 for ~25 years.
- Regional/state/national flow on effects, jobs and expenditure multipliers are being assessed.
- Carbon abatement (eg. tonnes of CO₂) will be calculated as part of the layout completion works.
- Community Fund contributions are being assessed and considered as part of the consultation process.

Grid Connection, Wind Farm Powerlines & Substations

Renewable power generated by the wind farm will be collected and exported to the National Grid at the existing 330kV Transgrid transmission line that crosses the southern section of the site. A new connection substation will be constructed on site adjacent to the existing Transgrid transmission line to facilitate grid connection and export of the wind farms power.

A new overhead wind farm powerline will be constructed running up the site to collect the renewable power generated by the wind turbines and feed it to the new connection substation at the south of the site. Up to three new collection substations will be located up the wind farm site to collect the power from the wind turbines and feed power into the new wind farm powerline.

Project Consultation – Public Open Day 26 July

- **Public open day was advertised in;**
 - Boorowa News
 - Yass Tribune
 - Newsletter No 5
- **51 people attended the public open day;**
 - Majority of people were supportive
 - About 11 people were opposed
 - 12 people asked for follow up information
 - 3 people/companies registered their interest in construction jobs and tender contracts
- **Material displayed included;**
 - Latest wind farm layout
 - Photomontages from 7 public viewpoints
 - Map of transport & construction access routes
 - General wind farm and industry information
 - Recent newsletter and corporate information

Boorowa News Classifieds	
FOR SALE	PUBLIC NOTICES
<p>FORD COURIER Dual Cab with Canopy, BL80PZ, 160,000kms, good condition, \$7,500. 0428-863-467.</p> <p>LIGHTS, CEILING FANS, COOKWARE Gifts, Kitchenware. Four shops full at Lamps N Things, Cowra, Next to Bunnings.</p> <p>OLIVE TREE NURSERY CLOSING DOWN SALE, Mature Trees 5ft high \$22, also some smaller trees \$6.60. Phone:6382-3181.</p>	<p>electora commission</p> <p>BOOROWA COUNCIL ELECTION SATURDAY, 8TH SEPTEMBER 2012</p> <p>Thinking of nominating as a candidate for local Council?</p> <p>If you are considering nominating you should read this notice as a candidate you have certain obligations and report under law. Check the website www.votensw.info.nsw.gov.au for further details.</p> <p>How to nominate for election as a Council</p> <p>To nominate as a Councillor, you must lodge a nomination and \$125 nomination deposit by 12 noon Wednesday, 8th August 2012.</p> <p>Where do I get a nomination form?</p> <p>Nomination forms and other important nomination and information are available from the Returning Officer or New South Wales Electoral Commission www.votensw.info</p> <p>Candidate information sheets: Every candidate is required to lodge a candidate information sheet with their nomination.</p> <p>Grouping of candidates and group voting squares: more candidates may form a group. A group may, in certain circumstances, request a group voting square on the ballot. A request to form a group and have a group voting square ballot paper must be lodged with the Returning Officer no later than noon Wednesday, 8th August 2012. See www.votensw.info publication 'Handbook - Parties, Groups, Candidates, Scrutineers at Local Government elections' for more details.</p> <p>Where and when to nominate</p> <p>Your nomination form and deposit must be lodged with the Returning Officer at Young Town Hall, 189-205 Boorowa Young NSW 2594 or at the office of the council for which you intend to stand as a candidate, during business hours Monday, 30th July 2012 to 12 noon Wednesday, 8th August 2012.</p> <p>Returning Officer details</p> <p>Mary Moffitt Young Town Hall, 189-205 Boorowa Street, Young NSW 2594 Information: www.votensw.info or 1300 135 736</p> <p>For enquiries in languages other than English call the interpreting service 13 14 50 For hearing and speech impaired enquiries, call us via National Relay Service on 13 96 77</p>
GARAGE SALES	
<p>GARAGE SALE July 21, 68 Brial Street from 9.30am. Bric-a-brac. NO EARLY BIRDS.</p> <p>GARAGE SALE Lounge Suite, washing machine, brand new lawn mower, seeing is believing. 1 Jugiong Street.</p>	
PUBLIC NOTICES	
<p>YOUNG EYES OPTOMETRISTS will next visit Boorowa Hospital Tuesday, August 14, for appointment please Phone:6382-4000, also visiting Harden monthly.</p>	
<p>EPURON</p> <p>RYE PARK WIND FARM</p> <p>A Public Open Day for the proposed wind farm will be held on Thursday, July 26 at the Rye Park Memorial Hall.</p> <p>Please come along and view the information on display about the project.</p> <p>Your feedback is important to us and will be considered in the development of the project.</p> <p>The Project Manager will be available to answer any questions you may have about the project.</p> <p>The current wind farm layout and preliminary photomontages will be on display including general information about wind energy.</p> <p>Date: Thursday 26 July Time: 9am to 5pm Venue: Rye Park Memorial Hall</p>	

Project Consultation – Public Open Day 26 July

o Summary of positive points/comments expressed

- Good opportunity to capture local expenditure and investment
- Local jobs available during construction & long term operations
- Rye Park community could benefit from projects support
- We need more clean green energy to reduce reliance on coal
- I like the look of wind turbines in the district

o Summary of negative points/comments expressed

- I am concerned that my property value will reduce if built
- What about the health impacts from wind farms
- Wind turbines are noisy and will be annoying
- I don't want to see wind turbines from my house
- I am concerned Bango wind farm is also close to me



Project Consultation – Key Activity and Timetable

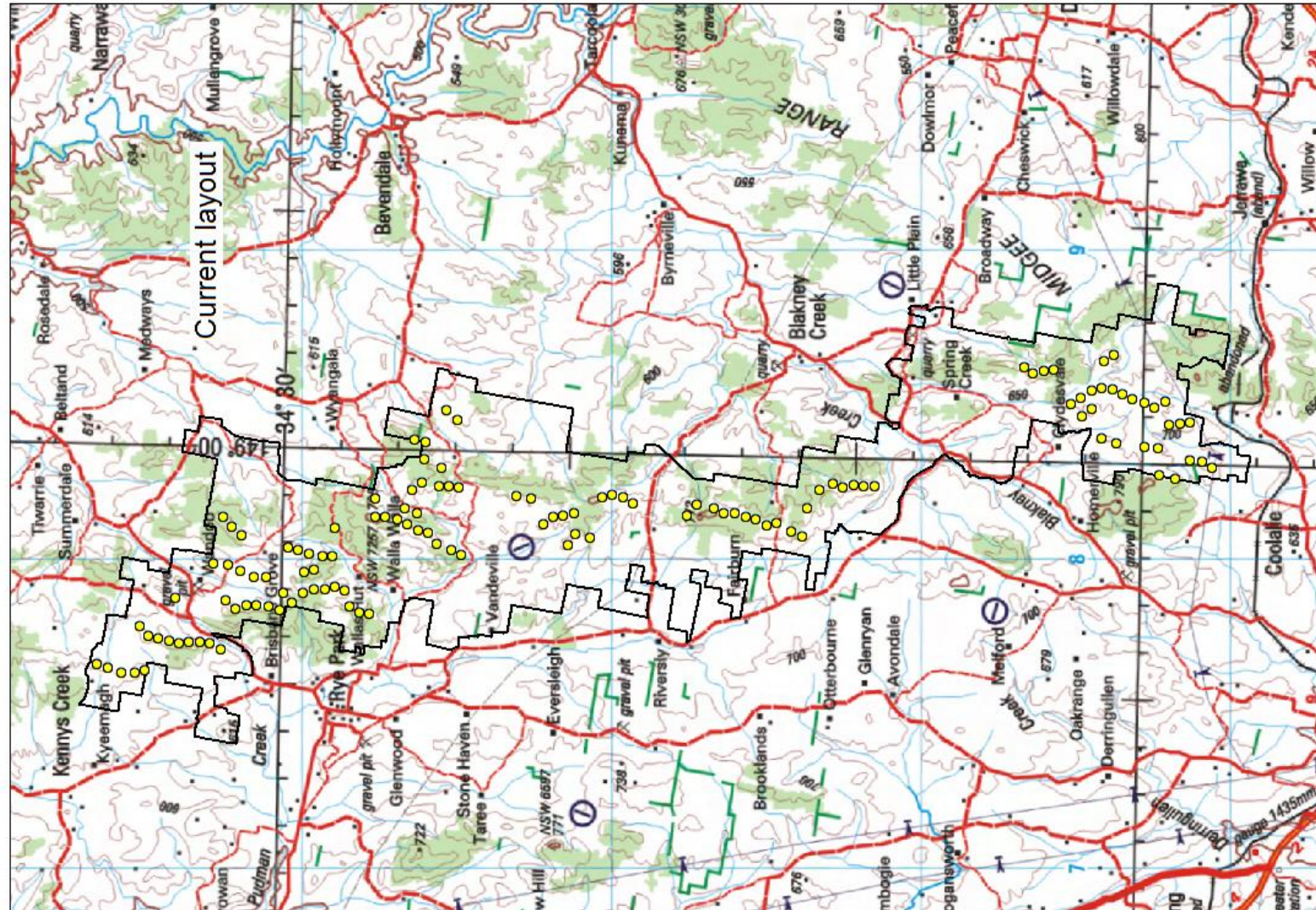
Activity	Timing	Objectives	Stakeholders	Status
Community information workshop	November 2008	Introduce Epuron and the proposal to landowners and community including preliminary layout	Involved landowners and selected stakeholders	Completed
Newsletter 1	December 2009	Inform community about project and initial information	Involved and uninvolved landowners (mail-out)	Completed
Newsletter 2	June 2010	Provide updated information and planning details including	Involved and uninvolved landowners (mail-out)	Completed
Newsletter 3	December 2011	Outline planning process and updated development progress	Involved and uninvolved landowners (mail-out)	Completed
Consult with neighbours within 2km	January / February 2012 (ongoing)	To discuss project and impacts with neighbours including feedback	Uninvolved neighbours within 2km of turbine	Completed (but ongoing)
Newsletter 4	March 2012	Advise consultation plans and release revised wind farm layout	Involved and uninvolved landowners (mail-out)	Completed
Establish Community Consultation Committee	April / May 2012	Establish formal mechanism for community participation	Invited members	Completed

Project Consultation – Key Activity and Timetable

Activity	Timing	Objectives	Stakeholders	Status
CCC Meeting 1	May / June 2012	Provide project information and seek feedback	Invited members	Completed
Newsletter 5 and Community Open House 1	June / July 2012	Update on studies and consultation and layout	Involved and uninvolved landowners (mail-out)	Completed
 CCC Meeting 2	July / August 2012	Provide updated information and consider feedback including release of draft final layout	Invited members	To be held Thursday 2 August 2012
Newsletter 6 and Community Open House 2	September / October 2012	Update on studies and consultation feedback contributing to draft final layout	Involved and uninvolved landowners (mail-out)	pending
CCC Meeting 3	September / October 2012	Provide draft final documentation for review and feedback	Invited members	TBC – Monday 17 September 2012
Pre DA submission follow up	September / October 2012	Consider feedback and any final amendments required prior to lodging application	Involved and uninvolved landowners, CCC and consultants	pending

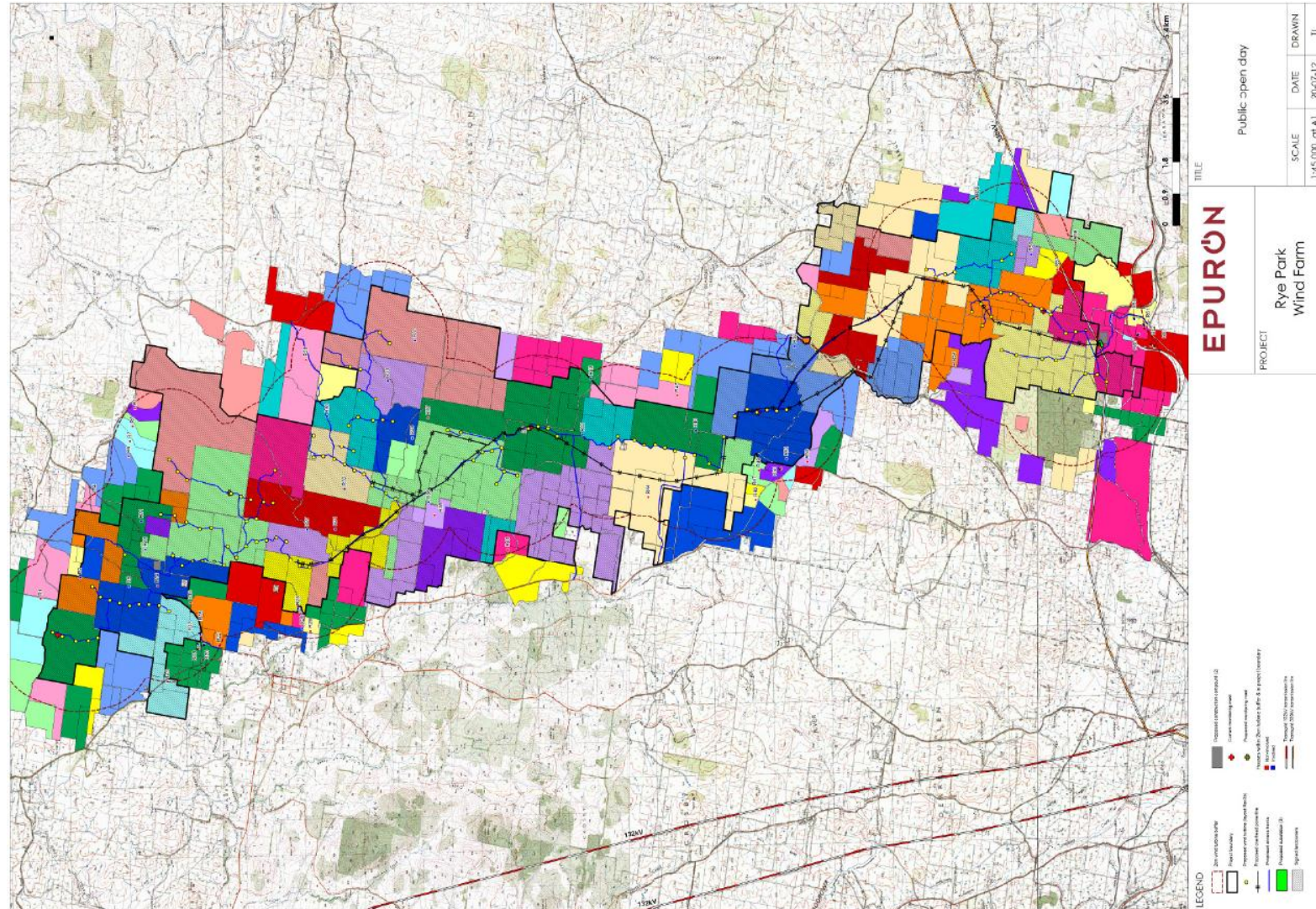
Project Information – Current Layout

- Current layout released March 2012
- Layout accommodates 131 wind turbines
- Based on 2011 environmental survey, 2 years of wind data, initial constraints analysis, land arrangements and early consultation feedback



Project Information – Current Layout updated for the Public Open Day

- Updated layout displayed at public open day included revised;
 - Access roads
 - Overhead powerlines and substations
 - Construction compounds
 - Additional wind monitoring mast
 - Houses layer
- Layout accommodates 131 turbines



Project Information – Archaeology & Heritage

- Consultation included 5 registered aboriginal parties;
 - Onerwal Local Aboriginal land Council
 - King Browns Tribal Group
 - Gunjeewong Cultural Heritage Aboriginal Corporation
 - Gundungurra Aboriginal Heritage Association Inc
 - Buru Ngunawal Aboriginal Corporation
- 9 day field survey completed during July 2012 and consultant assisted by Buru Ngunawal Aboriginal Corp.
- Preliminary results show proposed impact areas were assessed to be of low archaeological and heritage significance primarily due their location on very rocky ridgelines and situated away from streams and rivers.
- Aboriginal land use predicted to have been related to low levels of hunting, gathering and transit through country.
- Very low density of stone artefacts found to be present.
- Several milky quartz outcrops (raw material) were recorded and should be avoided during construction.



Project Information – Traffic & Transport Plan

o Plan released for consultation and assesses;

- Traffic and transport issues relevant to the construction & operation of the wind farm.
- Implications for the project and potential impacts.
- Proposed mitigation measures to minimise related impacts.
- Maximum traffic impacts during construction from heavy and oversized vehicles delivering equipment and material.
- Public road network proximate to the project.

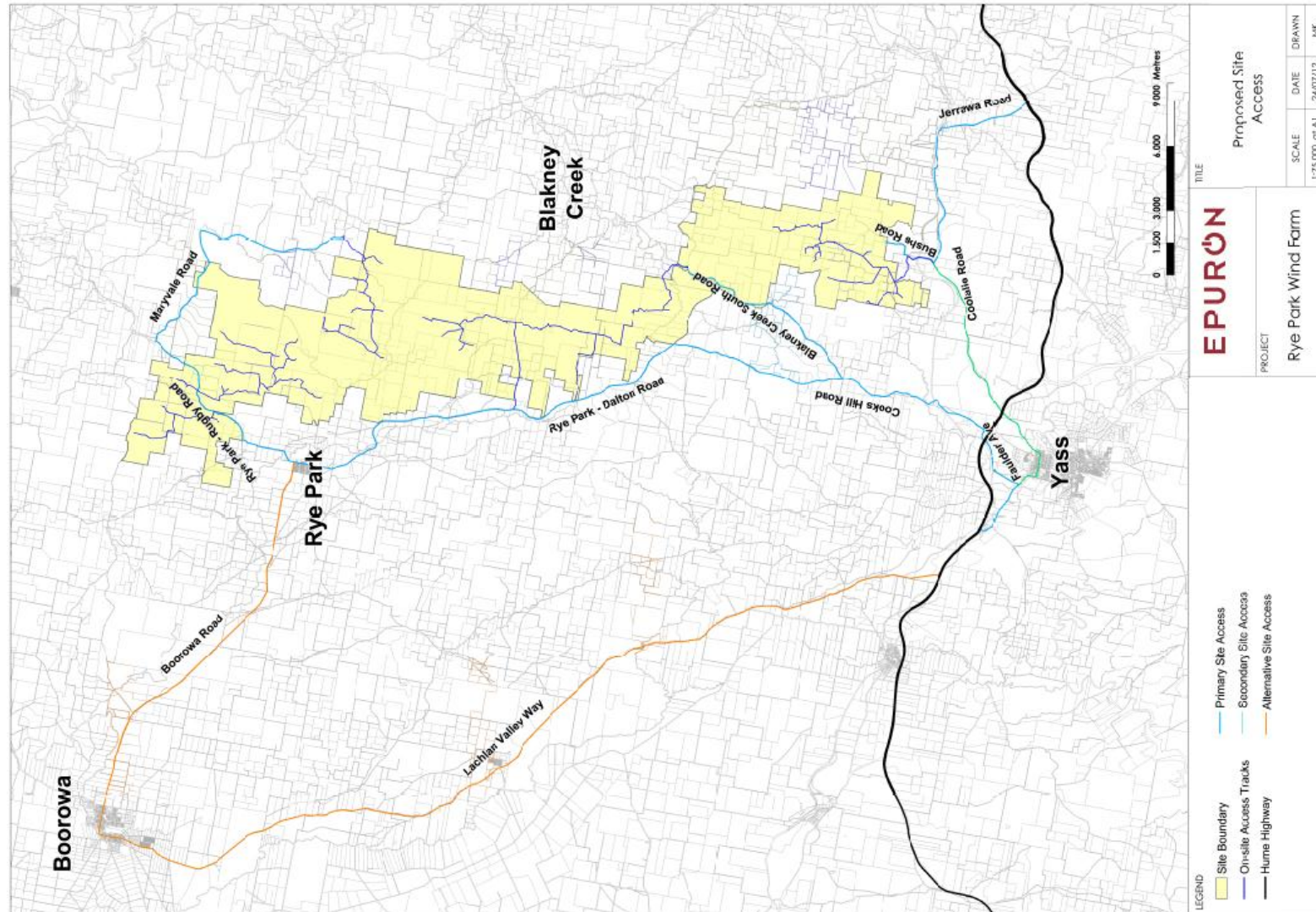
o Key issues addressed by the Plan;

- Suitability of existing roads for the type of vehicles that will need to access the site (road width, radius and bends etc).
- Structural capacity of existing roads and structures to handle the heavy vehicles for the delivery equipment and materials.
- Disturbance to the local community as a result of increased vehicle movements.
- Management of traffic on the site including traffic safety, minimising disturbance, erosion and dust.



Project Information – Traffic & Transport Access Roads & Routes

- Proposed construction access roads to site
- Construction compounds to be located at northern and southern ends of site
- Traffic and Transport Plan is available for consultation



Project Information – Community Fund

Epuron has been seeking feedback on how to best establish a community fund and to identify what type of local support is required from the project.

1. **Feedback.....”how to best establish a community fund”**

- Councils prefer that if a community fund is established it is managed by them.
- Community wants to have a say in where/how any community funds are spent.
- Draft Wind Guidelines say community infrastructure contributions may be required under Part 4, Division 6 of the EP&A Act 1979, or through a voluntary planning agreement (VPA) with a planning authority, including council.

2. **Feedback.....”what type of local support is required from the project”**

- Upgrade and improve local roads near the project
- Improvements to the township of Rye Park and better local amenities
- Better mobile phone reception and internet services
- Chance to reopen some businesses and local services in Rye Park
- Attracting new families to live in the local area

Project Information – Likely Benefits (updated preliminary estimates)

- Project Investment Value around **\$750m-\$850m** based on 393MW project
 - 65% Wind Turbines = \$488m-\$552m
 - 35% BoP Design and Construction = \$262m-\$298m
- Direct local/regional investment from construction – **\$200 million**
- Direct local/regional investment from operations - **\$15 million per annum for 25 years**
- Direct local/regional jobs during construction – **approx 250 to 350 Jobs**
- Direct local/regional jobs during operations – **approx 20 to 30 Jobs**
- Local/regional/state/national flow on effect multiplier (expenditure & jobs) – **approx 3.0**
- Carbon emissions abated – **approx 1,050,000 t CO₂e per annum**
- Community Fund – Epuron currently assessing feedback

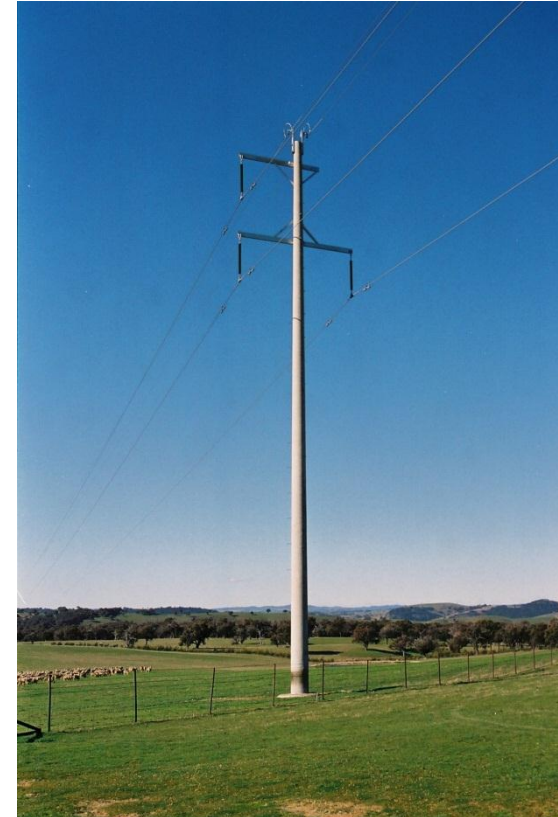
Rye Park Wind Farm – Grid Connection Update

- Wind farm will connect into the existing 330kV Transgrid transmission line that crosses the southern section of the site
- A new 330kV substation will be located adjacent to the existing Transgrid transmission line at the south of the site
- A new overhead powerline will run up the length of the wind farm site to collect the generated wind power.
- The new overhead powerline will be up to 132kV and will be mounted on a single pole type structure.
- 2 new connection substations will be constructed on the wind farm site.
- Power generated by the wind turbines will be reticulated to the 2 new connection substation via an underground electrical network.

Rye Park Wind Farm – Grid Connection Update



Example of 330kV transmission line tower structure



Example of 132kV powerline pole type structure

Next Steps and Timing

- Consultation and feedback - Ongoing
- Issue final draft layout - Mid August 2012
- Issue newsletter No 6 - End August 2012
- Hold public open day No 2 - Early September 2012
- Hold CCC meeting No 3 - 3pm Monday 17 September 2012
- Lodge EA - October

Communication and Feedback Channels Available

- Consultation is a two-way-street and we're always listening.
- Feedback and suggestions are important to us and help design the project.
- Available communication channels include;
 - Epuron corporate website: www.epuron.com.au
 - Rye Park project website: www.ryeparkwindfarm.com.au
 - Mailing address: Rye Park Wind Farm
Level 11, 75 Miller Street
North Sydney...NSW...2060
 - Phone: 02 8456 7400
 - Fax: 02 9922 6645
 - Email: RyePark@epuron.com.au
 - Senior Project Manager: Brian Hall
b.hall@epuron.com.au
 - Meetings Arranged by appointment

Thank You



Ti Tree solar project - NT

EPURON Pty Ltd

75 Miller Street
North Sydney
NSW 2060
AUSTRALIA

www.epuron.com.au

T +612 8456 7400
F +612 9922 6645



Cullerin range wind farm - NSW