

Details for CCC meeting No 5
Venue: Yass Valley Council Chambers
Address: 209 Comur Street, Yass
Date: Monday 22 July 2013
Time: 12.30pm to 2.30pm

EPURON

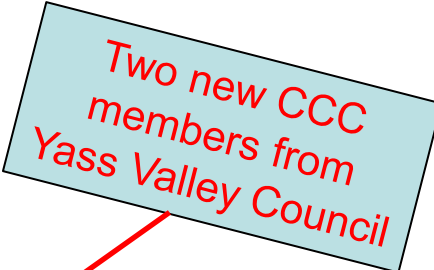
**Rye Park Wind Farm
Community Consultation Committee
Meeting No 5
22 July 2013**

Presentation Contents for CCC Meeting No 5

1. CCC membership update
2. Epuron CCC action items from meeting 4
3. Project overview
4. Introducing TrustPower
5. Development update
6. Current project information
7. Next steps and timing
8. Communication and other information

Community Consultation Committee – Membership Update

- Independent chairperson;
 - Nic Carmody
- Involved landowners;
 - Graham and Margaret Privett
 - Greg Medway
- Uninvolved landowners;
 - Jenny and Chris Hally
 - Bev and Alex Davis
- Other, local group or association;
 - As required
- Local councils;
 - Mayor Wendy Tuckerman – Boorowa Council
 - Councillor James Wheelwright – Upper Lachlan Council
 - **Councillor Ann Daniel** and **Councillor Garry Ware** – Yass Valley Council
- Epuron
 - Brian Hall – Senior Project Manager



Two new CCC members from Yass Valley Council

Epuron CCC Action Items from CCC Meeting 4

- Follow up RFS for response to letter from Bev Davis
 - Epuron have sent follow up email and phone calls to Peter Alley at Yass RFS. Still awaiting response.
- Provide A1 size wall map to Yass Valley Council
 - A1 map forwarded to Yass Valley Council on 14 March for display purposes (copy also enclosed in this presentation and A3 map provided to CCC members).
 - A3 map provided to CCC members as part of meeting 5
- Upload copy of meeting presentation material to website
 - Uploaded week following last meeting.

Project Overview

- New Zealand utility Trustpower announced their project involvement in May 2013
- EA submitted to Department of Planning & Infrastructure November 2012 for review
- Expect EA to be publicly exhibited by DPI in the coming weeks / dates TBC by DPI
- EA layout of wind farm accommodates 126 turbines and associated infrastructure
- Layout incorporates consultation feedback and results of expert studies
- Overhead powerline voltage up to 330 kV on single pole type structure to 45 m high
- Transgrid progressing connection enquiry and commenced technical studies
- Five wind monitoring masts have been installed on site (>3 years data)
- Consultation and community feedback is ongoing
- Project details available at website www.epuron.com.au/projects/rye-park

Introducing TrustPower

- NZ publicly listed electricity generator / retailer (> 200,000 customers in NZ)
- 470 staff - market capitalisation of NZ\$2.4 billion - NZ\$800 million annual revenue
- Owns & operates 36 hydro generation stations across NZ
- 4 operating wind farms, including New Zealand's largest (Tararua Wind Farm) & Australia's 2nd largest (Snowtown Wind Farm)
- Active in Australia for last decade
- Snowtown Wind Farm (SA) – commissioned Stage 1 in 2008 (48 turbines 100MW)
- Snowtown Stage 2 under construction (90 turbines 270MW).



TrustPower Rye Park strategy

- TrustPower strategic plan to expand wind farm portfolio in Australia
- Rye Park Wind Farm – good fit within TrustPower strategy
- Option with Epuron to acquire the project following securing of land and planning approvals
- Working collaboratively with Epuron to enable construction feasibility as soon as possible post planning approvals
- Potential construction in 2015-16 (market demand in 2016-17)
- TrustPower has fostered strong landowner and community support for all projects
- Meeting all key stakeholders to build ongoing relationship for life of project



Strong support for Snowtown

BY KEIRA JAMES

Siemens Ltd, engineering and construction contractor for Snowtown wind farm stage II, has donated \$10,000 to the Snowtown community through the TrustPower Lend-a-Hand foundation.

Siemens is the major contractor on the Snowtown project and on completion will maintain the 90 wind turbines, including a 15 year service contract.

"Siemens will be an integral part of the Snowtown community, both now and for the next 15 years.

"We see this contribution to the TrustPower Lend-a-Hand foundation as a reflection of our ongoing support for the future of this community," David Pryke, Executive Vice President of Energy sector Siemens Ltd, said.

Alan Large from Snowtown Lions Club said unlike other wind farm projects in the Mid North, the Snowtown community were pleased to have the development in the region.

"There's no doubt about it."

He said businesses in the region had already seen increasing sales, with workers coming up from Adelaide purchasing fuel and food from local retailers.

Mr Large accepted the cheque on behalf of the Snowtown, Lochiel, Koolunga, Blyth and Bute communities and said the TrustPower Lend-a-Hand foundation wanted to ensure the funds reached the wider community.

"...will be an integral part of the Snowtown community..."

Discussions were underway with Wakefield Regional Council.

David Pryke said the transfer of knowledge from out of town workers.

TrustPower's approach to working with local reason locals were said.

Snowtown Stage megawatts of renewable energy by end of 2012.

Digging deep for the community



Snowtown backing for the biggest windfarm in South Australia is being repaid in spades. The community received \$10,000 from the project Siemens Energy on Monday in a gesture aimed to help a hand with the residents. The multi-million-dollar project will involve 90 turbines, a construction crew of 200 workers and 100 and an operational crew of 100.



Wind farm access roads aid firefighters

THREE grass fires in February, freshly started by lightning – including one strike that killed a sheep – revealed a sign that meant fire trucks could get to the site of the fires. It's rough and steep country and carrying water to a fire is difficult. Neighboring landowner Peter Ebsary, who acted as a natural fire break, giving us an edge to work back to and enabling us to back burn if we'd needed to. These new access roads provided an unexpected boon, but they'll help us control fires in the future."

While Pat Coffey is pleased that his crew has access to the new roads, he wishes they'd been extended another half kilometre further south to the communications tower, and a similar distance further north, which would have provided links with other existing roads. He lives in hope. Snowtown 2 Wind Farm project manager, Jim Pearson, said he was delighted with the positive communication and working relationship that had been established between the landowners, CFS and site contractors as a result of the fires. "CFC and Consolidated Power Projects also supported the CFS with their firefighting sites and a diesel truck," he said. "We're pleased we were able to help in increasing the high fire risk situation this summer. Meanwhile, the extended summer weather has been ideal for the 110 contractors working on site, with construction of Stage 2 of the Snowtown Wind Farm running right on track."

Construction of the transmission line is ahead of schedule, the wind farm sub-station is being built with working on site at the end of October, while pouring of the wind turbine foundations is half completed. Shipments of major components such as blades and towers are expected to begin in mid-May. Substation construction is to start in August.



SNOWTOWN COMMUNITY IS ...

Skating along!

SNOWTOWN residents are thrilled to see action at the skate park site, with the preparation of the area now completed, ready for concrete to be poured. Local, Kevin Weppers cleared and leveled the site before Christmas, with Wakefield Regional Council preparing the base and adding rubble in February. Caton, the construction company in charge of building the Stage 2 Wind Farm at Snowtown, has generously donated the concrete slab to the Snowtown community.



IN front of the prepared area for the skate park are Bernie Altmann, Michelle Doherty and Tanva Warner with some of the local children, Karla Altmann, Cecelia Altmann, Brooke Jamison, Henry Warner and Alisha Altmann.

"The supervisor requires help with steel components to build the ramps and jumps, and we're looking for some capable people to help out," she said. If you can help, even if just for a day or few hours please phone Bernie on 0438 790 026. Once the park is finished, the committee will then build fences, ashler and barbecue area, which will also benefit the caravan park area. The committee and children of the town are hopeful the park will be operating before the end of school holidays, which run from Monday April 12 to Monday, April 29.

TRUSTPOWER WIND FARM NEWS

CONSTRUCTION of Stage 2 of the Snowtown Wind Farm by TrustPower will create South Australia's biggest wind farm – and the second largest in Australia. This is the second in a series of special columns provided by TrustPower to inform Snowtown residents and others of the project's progress. More will appear throughout 2013.

Grassland management plan is 'win-win' for all

What has been described as a "win-win" for the environment, landowner productivity and wind farm developer, TrustPower, about 100ha of degraded native grassland on the South-Munrocks is benefiting from an innovative new management plan. Under the Native Vegetation Act 1991, TrustPower is required to provide an environmental benefit offset for the clearance of native vegetation associated with the construction of the second stage of the Snowtown wind farm. This is often achieved by paying money into funds held by the Native Vegetation Council (NVC) for environmental remediation. Instead, an alternate approach has been agreed to TrustPower, assisted by the Mid North Grasslands Working Group, has identified a suitable native grasslands offer area on a property north-east of the Koolunga township, owned by the Millard family.

As a result, a Native Vegetation Management Plan has been negotiated with the NVC that establishes a rotational grazing program as a management tool together with weed management and feral animal control, establishes a number of "cells" or paddocks with watering facilities for stock, and includes annual surveys and reporting improvements. Mid North Grasslands Working Group member Mike Nichols said: "I think it's a really innovative solution. This will result in an important grassland area being sustainably managed for the long term."

Bruce Munday, chair of the Native Vegetation Assessment Panel, says there are benefits all round: "Using rotational grazing to reduce weed cover will allow native grasses to flourish while the landowner gains from improved grazing productivity. The landowners are now committed to using rotational grazing as a tool for improving the overall condition of the grassland communities."

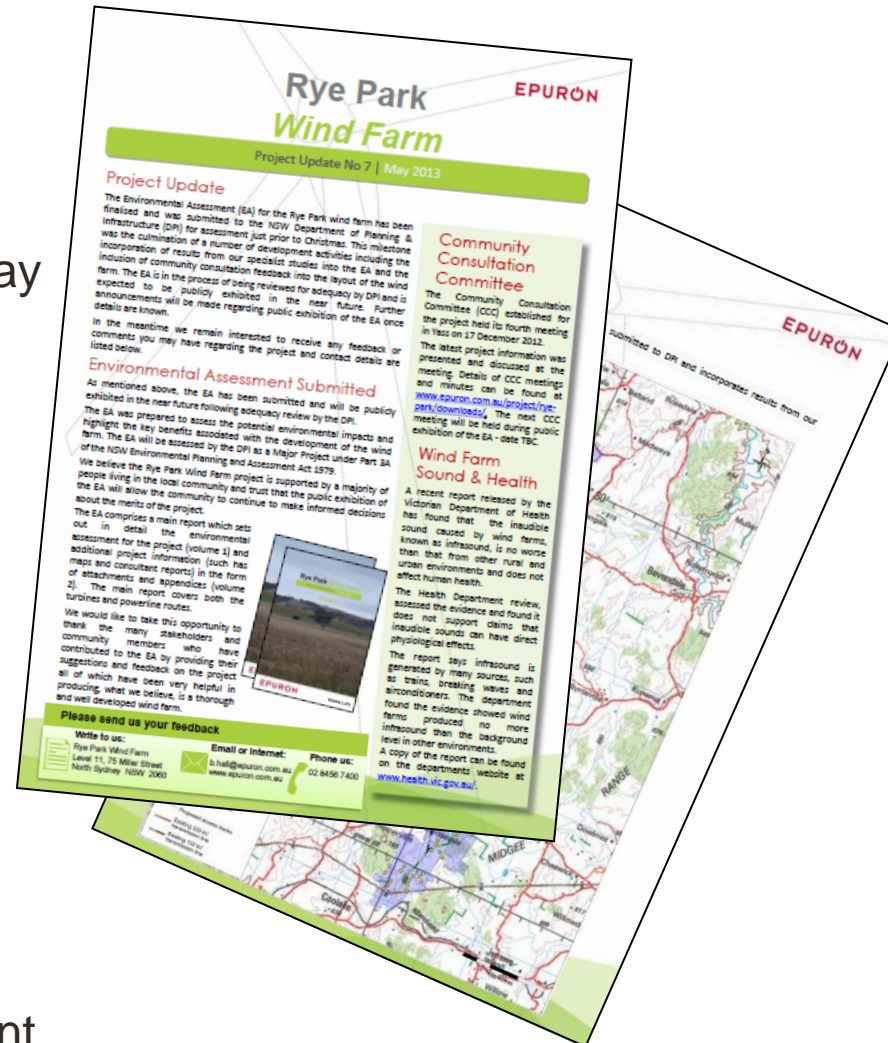
- PROJECT UPDATE:**
- Current activities in the construction Stage 2 of the Snowtown Wind Farm (SWF-2) include:
 - Foundation excavation and concrete pouring, continuing to mid-year.
 - Access road construction.
 - Cable trenching and laying operations.
 - Commencement of construction activities at substation station 7km west of Blyth.
 - Construction of the 28km 275kV transmission line from Barunga Gap to the Blyth West substation.
 - Construction of 100 SA-based workers are employed on site.

2 www.plansproducer.com.au



Development Update

- TrustPower announcement is significant milestone achievement
- Newsletter No 7 was released in May
- TrustPower initial site inspection for grid connection/electrical design completed end May
- Environmental winter survey was conducted across site week commencing 8 July
- Department expected to release EA for public exhibition July/August
- New 80m wind monitoring mast installed at north of site (total of 5 masts) early 2013
- Currently transitioning landowners to Agreements to Lease
- Councillor David Needham no longer representing Yass Valley Council on CCC
- Global Wind Day held on 15 June and Epuron contributed to Goulburn Post media supplement



Wind Farm Access Roads Aid Fire-fighters

During recent grass fires in SA started by lightning, it was revealed that a significant benefit was brought by access roads built for a local wind farm.

“They were absolutely of great benefit in helping us fight the fires,” said the Snowtown Country Fire Service (CFS) Captain. “If it weren’t for the those roads, the fires, which were going at a fair rate of knots, would have just kept going. They acted as a natural fire break, giving us an edge to work back to and enabling us to back burn if we’d needed to. These new access roads provided an unexpected bonus, but they’ll help us control fires in the future.”

It was said access tracks installed as part of a wind farm increased accessibility onsite and therefore had a positive impact on response time and ability to fight fires onsite or neighbouring properties.

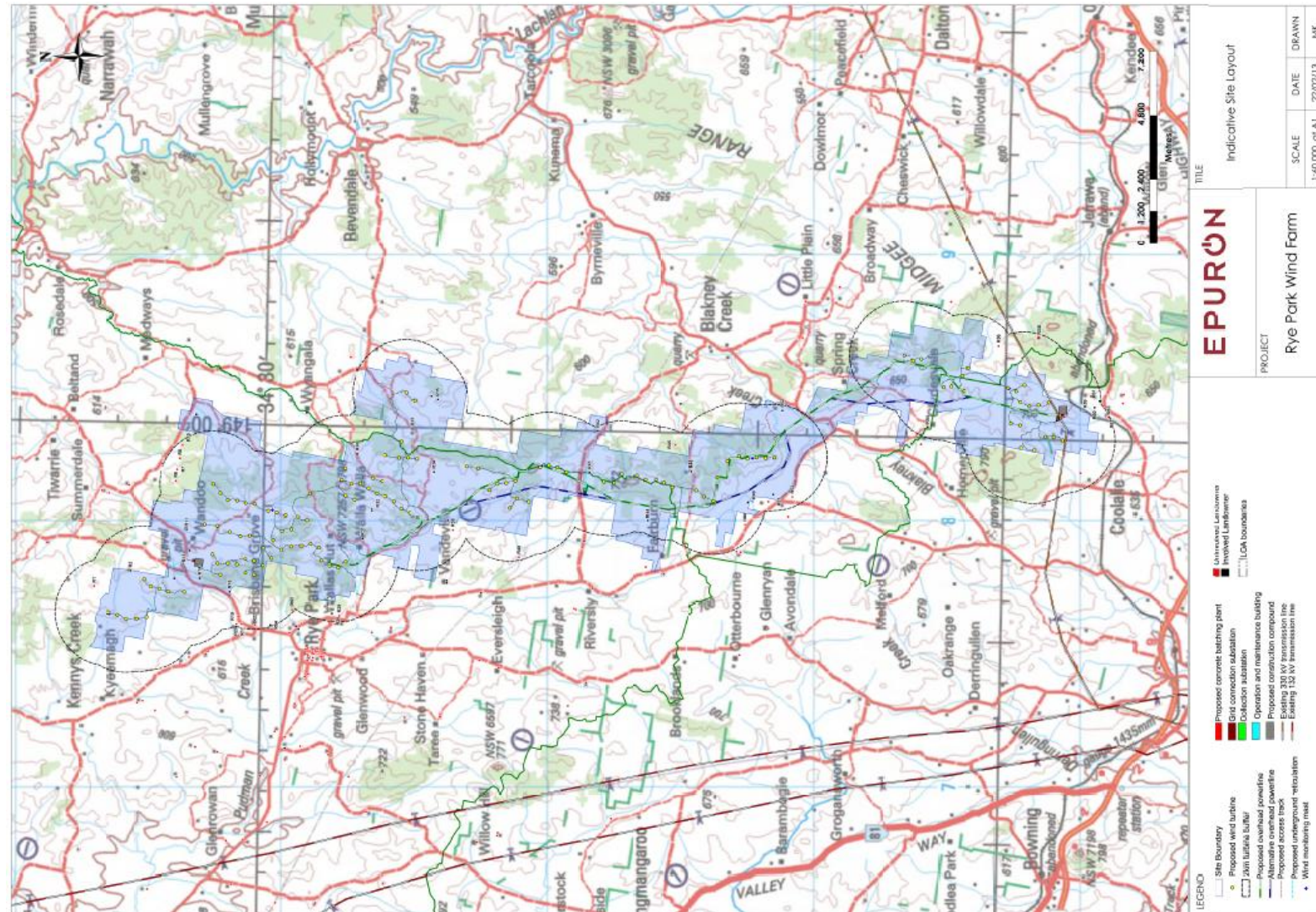
Notably, in consultation with authorities including the NSW Rural Fire Service and NSW Fire Brigade, a bushfire management plan would be prepared for Rye Park prior to commencement of construction.



Snowtown Wind Farm – SA (TrustPower)

Updated Map for Council

- A1 size map provided to council
- A3 size map provided to CCC members
- Map updated to include;
 - Council LGA boundaries
 - Involved and uninvolved houses
 - 2km buffer line from turbines



Other CCC Discussion Points

- Consultation and feedback
 - Any communication or feedback to report from community
- Community Enhancement Fund
 - Any further thinking on required community support and delivery model
- What does the involvement of TrustPower mean
- Upcoming activities
 - EA exhibition
 - Open Day
 - Newsletter

Project Consultation – Key Activity and Timetable

Activity	Timing	Objectives	Stakeholders	Status
Community information workshop	November 2008	Introduce Epuron and the proposal to landowners and community including preliminary layout	Involved landowners and selected stakeholders	Completed
Newsletter 1	December 2009	Inform community about project and initial information	Involved and uninvolved landowners (mail-out)	Completed
Newsletter 2	June 2010	Provide updated information and planning details including	Involved and uninvolved landowners (mail-out)	Completed
Newsletter 3	December 2011	Outline planning process and updated development progress	Involved and uninvolved landowners (mail-out)	Completed
Consult with neighbours within 2km	January / February 2012 (ongoing)	To discuss project and impacts with neighbours including feedback	Uninvolved neighbours within 2km of turbine	Completed (but ongoing)
Newsletter 4	March 2012	Advise consultation plans and release revised wind farm layout	Involved and uninvolved landowners (mail-out)	Completed
Establish Community Consultation Committee	April / May 2012	Establish formal mechanism for community participation	Invited members	Completed

Project Consultation – Key Activity and Timetable.....continued

Activity	Timing	Objectives	Stakeholders	Status
CCC Meeting 1	May / June 2012	Provide project information and seek feedback	Invited members	Completed
Newsletter 5	June / July 2012	Update on studies and consultation and layout	Involved and uninvolved landowners (mail-out)	Completed
Community Open Day	June / July 2012		Involved and uninvolved landowners, CCC, consultants and public	Completed
CCC Meeting 2	July / August 2012	Provide updated information and consider feedback including release of draft final layout	Invited members	Completed
Newsletter 6	September / October 2012	Update on studies and consultation feedback contributing to draft final layout	Involved and uninvolved landowners (mail-out)	Completed
CCC Meeting 3	September / October 2012	Review of draft final layout incorporation feedback	Invited members	Completed
Lodgement of EA with DP&I	November 2012	Submit EA	DP&I	Completed

Project Consultation – Key Activity and Timetable.....continued

Activity	Timing	Objectives	Stakeholders	Status
CCC Meeting 4	December 2012	Advise CCC of final EA layout incorporating feedback and study results	Involved and uninvolved landowners, CCC and consultants	Completed
Newsletter 7	May 2013	Advise community of final EA layout incorporating feedback and study results	Involved and uninvolved landowners, CCC and consultants	Completed
CCC Meeting 5	July 2013	Consider feedback and any final amendments to lodged application	Involved and uninvolved landowners, CCC and consultants	Completed
EA Exhibition	Aug / Sept	Public exhibition of EA and submissions	Involved and uninvolved landowners, CCC, consultants and public	Pending
Community Open Day	During EA exhibition	Inform community of EA lodgement and exhibition	Involved and uninvolved landowners, CCC, consultants and public	Pending
Newsletter 8	During EA exhibition	Inform community of EA lodgement and exhibition	Involved and uninvolved landowners, CCC and consultants	Pending
CCC Meeting 6	During EA exhibition	Advise CCC of exhibited EA layout incorporating feedback and study results	Involved and uninvolved landowners, CCC and consultants	Pending



Communication and Feedback Channels Available

- Consultation is a two-way-street and we're always listening.
- Feedback and suggestions are important to us and help design the project.
- Available communication channels include;
 - Epuron corporate website: www.epuron.com.au
 - Rye Park project website: www.ryeparkwindfarm.com.au
 - Mailing address: Rye Park Wind Farm
Level 11, 75 Miller Street
North Sydney...NSW...2060
 - Phone: 02 8456 7400
 - Fax: 02 9922 6645
 - Email: ryepark@epuron.com.au
 - Senior Project Manager: Brian Hall
b.hall@epuron.com.au
 - Meetings Arranged by appointment



New RYP5 Wind Monitoring Mast – North Bearing

**Questions and general
discussion**

**Thank you for your
attendance**