

Details for CCC meeting No 7
Venue: Yass Memorial Hall
Address: Comur Street, Yass
Date: Wednesday 30 April 2014
Time: 12.00 noon to 2.30pm



Rye Park Wind Farm
Community Consultation Committee
Meeting No 7
30 April 2014

Contents for CCC Meeting No 7

1. CCC membership update
2. Summary of Epuron action items from CCC meeting 6
3. Development update
4. Current project information
5. CCC discussion points
6. Next steps and timing
7. Industry news
8. Communication and other information



CCC Membership Update

Membership Group	Representative
Independent Chairperson	<ul style="list-style-type: none"> Nic Carmody
Involved Landowners	<ul style="list-style-type: none"> Graham Privett Greg Medway Malcolm Day
Uninvolved Landowners	<ul style="list-style-type: none"> Jenny and Chris Hally Bev and Alex Davis
Local Councils	<ul style="list-style-type: none"> Mayor Wendy Tuckerman – Boorowa Council Councillor James Wheelwright – Upper Lachlan Council Councillor Ann Daniel – Yass Valley Council
Local Business / Groups / Associations	<ul style="list-style-type: none"> As required
Observer	<ul style="list-style-type: none"> Chris Mackenzie-Davey – Office of Environment & Heritage
Proponent	<ul style="list-style-type: none"> Brian Hall - Epuron

Summary of Epuron action items from CCC meeting 6

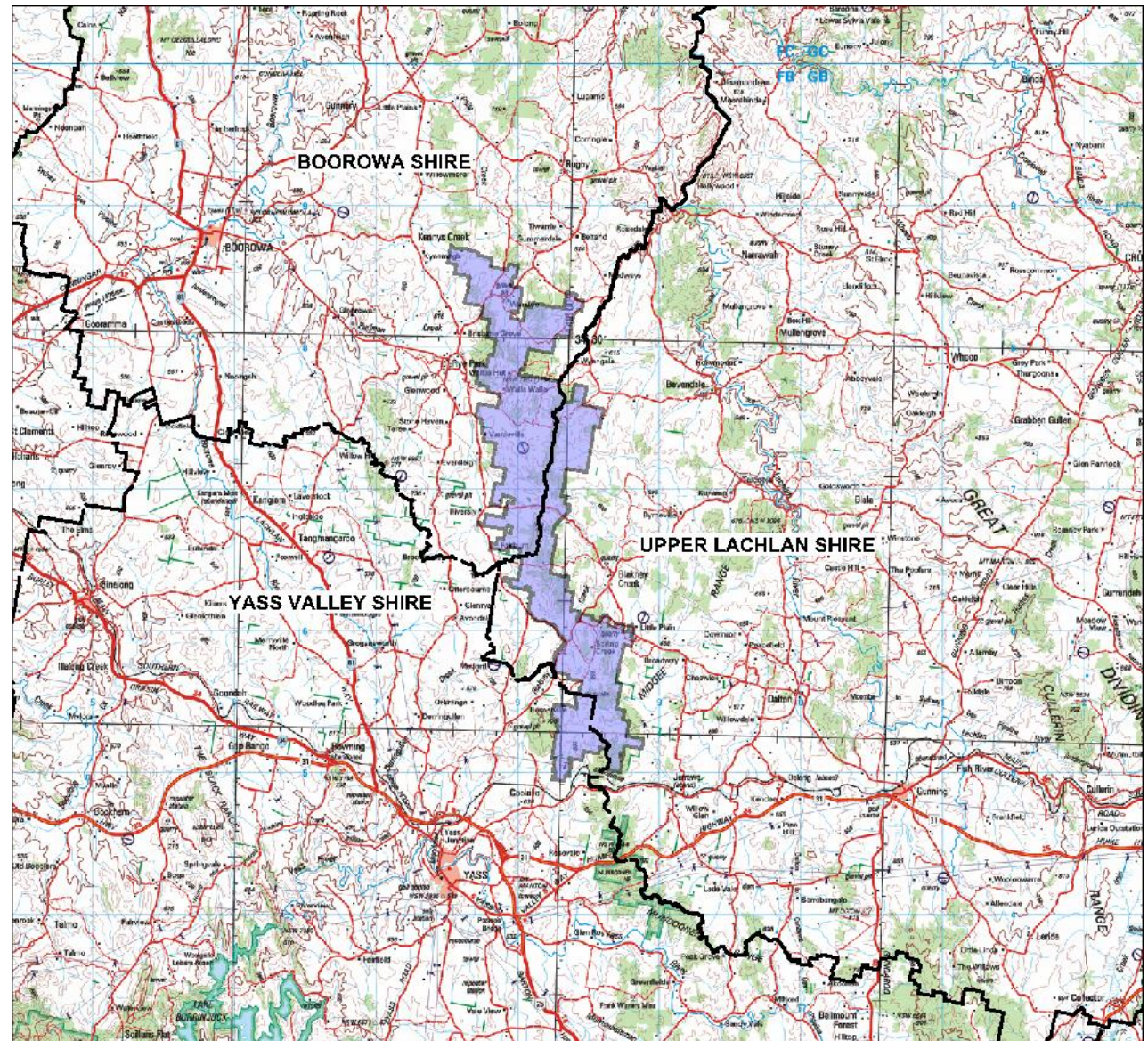
1. NC asked for a minor change to the tenth bullet point under item 6b of the previous minutes of meeting 5.
 - Complete.
2. Request for Epuron to run an EOI process prior to construction for registrations from interested local contractors and suppliers.
 - Noted.
3. Epuron to circulate any further feedback received on the establishment of a community enhancement fund.
 - Noted.

Summary of Epuron action items from CCC meeting 6.....(continued)

4. NC asked Epuron to provide an estimate number of houses and total hectares located within the following bands from the site (for CEF discussion purposes only).
 - 0-2km / approximately 48 houses and 21,680 hectares
 - 2-4km / approximately 55 houses and 21,870 hectares
 - 4-6km / approximately 17 houses and 23,210 hectares
5. BD asked Epuron to contact V&C Walters.
 - Complete.
6. Epuron to upload CCC presentation to website.
 - Complete.
7. Epuron to arrange next CCC meeting once exhibition dates are known.
 - Complete.

Project Locality Map

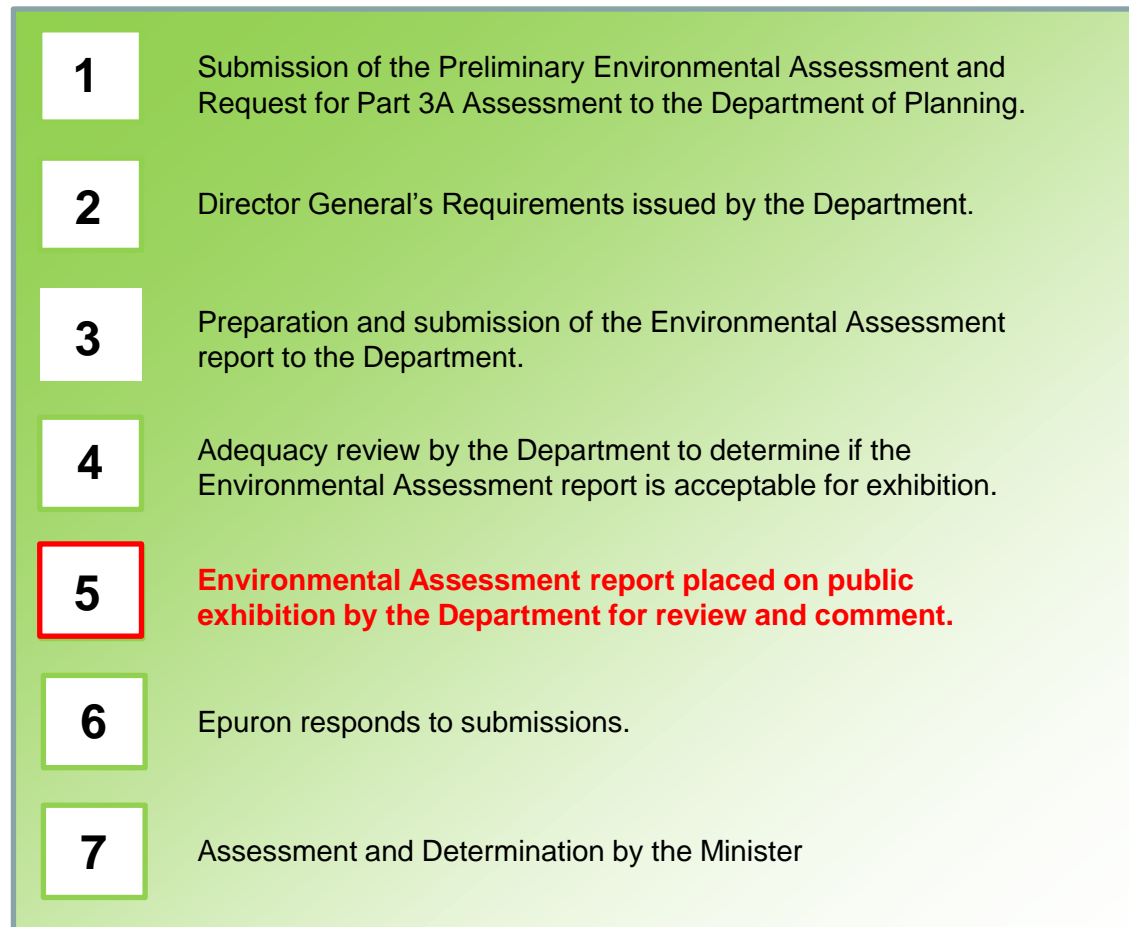
- 126 wind turbines
- Site is located across three council areas;
 - Boorowa
 - Yass Valley
 - Upper Lachlan
- Existing Transgrid 330kV transmission line crosses south of site
- Yass located around 10km southwest of southern boundary



Development Update

- DPI to publicly exhibit the Environmental Assessment from 2 May to 4 July.
- Transition from Part 3A to Part 4 announced by DPI on 21 March.
- Federal EPBC Act referral lodged in March and determination is pending.
- Next project newsletter will be released to community at end of April.
- Community open day to be held at Rye Park Memorial Hall in May.
- Meetings have been held with three councils to introduce TrustPower to the project.
- Works to transition landowners to Agreements to Lease is progressing well.
- Latest reports from NHMRC and AMA find no link to wind farms and health effects.
- Latest IPCC report confirms global warming is real and CO₂ is largest contributor.
- Review of Federal RET scheme is underway.

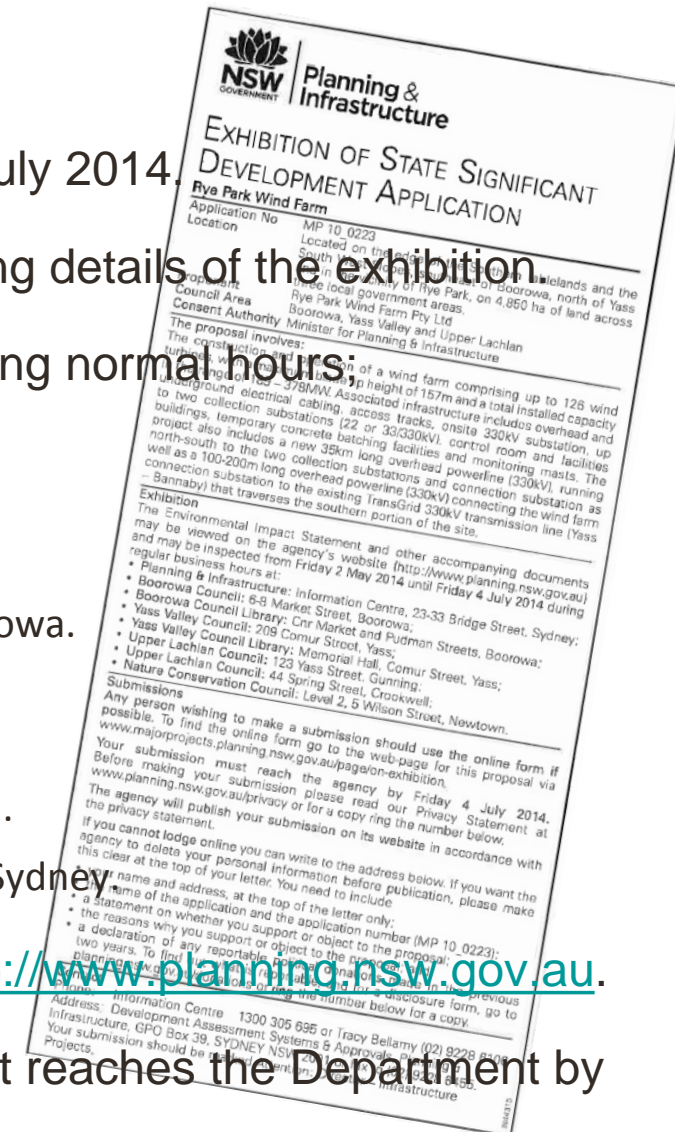
Stages of the Environmental Assessment Process



WE ARE HERE →

Details of Public Exhibition

- DPI will exhibit EA from Friday 2 May 2014 to Friday 4 July 2014.
- The Department will place notices in local papers advising details of the exhibition.
- EA documents can viewed at the following locations during normal hours:
 - Yass Valley Council: 209 Comur Street, Yass.
 - Yass Valley Council Library: Memorial Hall, Comur Street, Yass.
 - Boorowa Council: 6-8 Market Street, Boorowa.
 - Boorowa Council Library: Cnr Market and Pudman Streets, Boorowa.
 - Upper Lachlan Council: 123 Yass Street, Gunning.
 - Upper Lachlan Council: 44 Spring Street, Crookwell.
 - Nature Conservation Council: Level 2, 5 Wilson Street, Newtown.
 - Planning & Infrastructure: Information Centre, 23-33 Bridge St, Sydney
- The EA will be available on Department's website at <http://www.planning.nsw.gov.au>.
- Any person wishing to make a submission must ensure it reaches the Department by Friday 4 July 2014.



Change of Planning Process Announced

- The Environmental Assessment for the Rye Park Wind Farm was prepared in accordance with Part 3A of the Environmental Planning and Assessment Act 1979.
- On 21 March 2014, by order of the Minister for Planning and Infrastructure published in the NSW Government Gazette, the project ceased to be a transitional Part 3A project and became a 'State Significant Development'.
- In effect the project will now be assessed as a State Significant Development under Division 4.1 of Part 4 (instead of Part 3A) of the Environmental Planning and Assessment Act 1979.
- The EA will be on exhibition from 2 May to 4 July.



CCC Discussion Points

- Community consultation and feedback
 - Any feedback or communication to report from the community
- Community Open Day
 - To be held at Rye Park Memorial Hall in May
- Community Enhancement Fund
 - Any further thinking on required community support and preferred delivery model
- Any carry over agenda items or discussion points from previous meeting
 - Response from RFS

Community Enhancement Fund – Potential Use and Administration

o Potential use of funds

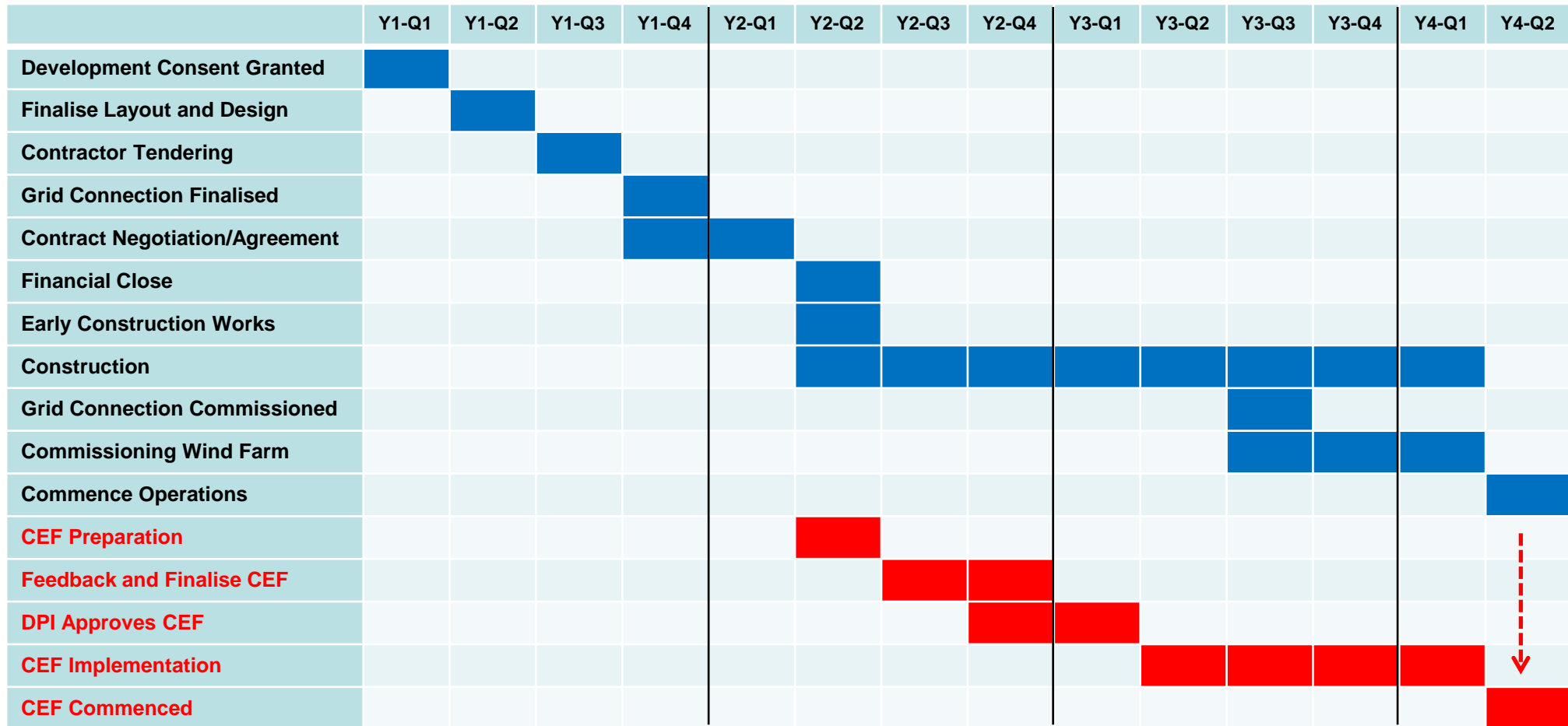
- Primary purpose to provide a direct benefit to the local community.
- Contributions towards community projects and local initiatives such as;
 - ❑ equipment purchases
 - ❑ facility and services construction
 - ❑ renovation and refurbishment projects
 - ❑ programs that enhance the community's wellbeing
- Potential to provide financial contributions towards implementing renewable energy improvements to residents proximate to the project.

o Potential mechanisms to administer funds

- Fund could be managed by;
 - ❑ Community Consultation Committee.
 - ❑ Special purpose Community Fund Committee.
 - ❑ Local councils.
 - ❑ Existing local body or association. Other?
- Funding mechanism should be developed in consultation with the proponent, local councils and local community. To be approved by Director General.
- Fund mechanism to consider administration, accounting, auditing and reporting needs.
- Consider how funding initiatives will be identified, assessed, prioritised and implemented.

FOR DISCUSSION PURPOSES

High Level Timeline - From Development Approval to Start of Operations



CEF = Community Enhancement Fund

Next Steps and Timing

- Landowner & community consultation - Ongoing
- Next newsletter - Released end April
- EA public exhibition - 2 May to 4 July
- Community Open Day - To be held in May
- Next CCC meeting - September (date TBC)



Wind farm photomontage at the corner of Cooks Hill Road and Rye Park Dalton Road

Industry News

- NHMRC (National Health and Medical Research Council)
 - Summary of findings states there is no reliable or consistent evidence that wind farms directly cause adverse health effects in humans.
 - Draft Report released in February 2014 and invites comment and feedback on findings.
- AMA (Australian Medical Association)
 - March 2014 Position Paper says there is no credible evidence that wind farms have a negative impact on the health of people who live near them.
 - Infrasound and low-frequency sound generated by modern wind farms in Australia is well below the level where known health effects occur.
 - AMA says there is no accepted physiological mechanism where sub-audible infrasound from wind farms could cause health effects.
- IPCC (Intergovernmental Panel on Climate Change)
 - Fifth report released April 2014 confirming climate change is real and planet is warming.
 - Largest contributor to climate change is increase in atmospheric CO₂ since the 1950's.
 - Human influence on climate system is clear and must substantially reduce CO₂ emissions.
- RET (Renewable Energy Target)
 - Review by Federal Government is underway.
 - Renewable energy scheme in place to source 20% renewables by 2020.

Communication and Feedback Channels Available

- Consultation is a two-way-street and we're always listening.
- Feedback and suggestions are important to us and help design the project.
- Available communication channels include;
 - Epuron corporate website: www.epuron.com.au
 - Rye Park project website: www.ryeparkwindfarm.com.au
 - Mailing address: Rye Park Wind Farm
Level 11, 75 Miller Street
North Sydney...NSW...2060
 - Phone: 02 8456 7400
 - Fax: 02 9922 6645
 - Email: ryepark@epuron.com.au
 - Senior Project Manager: Brian Hall
b.hall@epuron.com.au
 - Meetings Arranged by appointment

**THANK-YOU
and
PLEASE SEND US YOUR FEEDBACK
to
info@epuron.com.au**

EPURON Pty Ltd

75 Miller Street
North Sydney
NSW 2060
AUSTRALIA

T +61 2 8456 7400
F +61 2 9922 6645

www.epuron.com.au

