

Figure 1. Site overview of Lots/DPs.

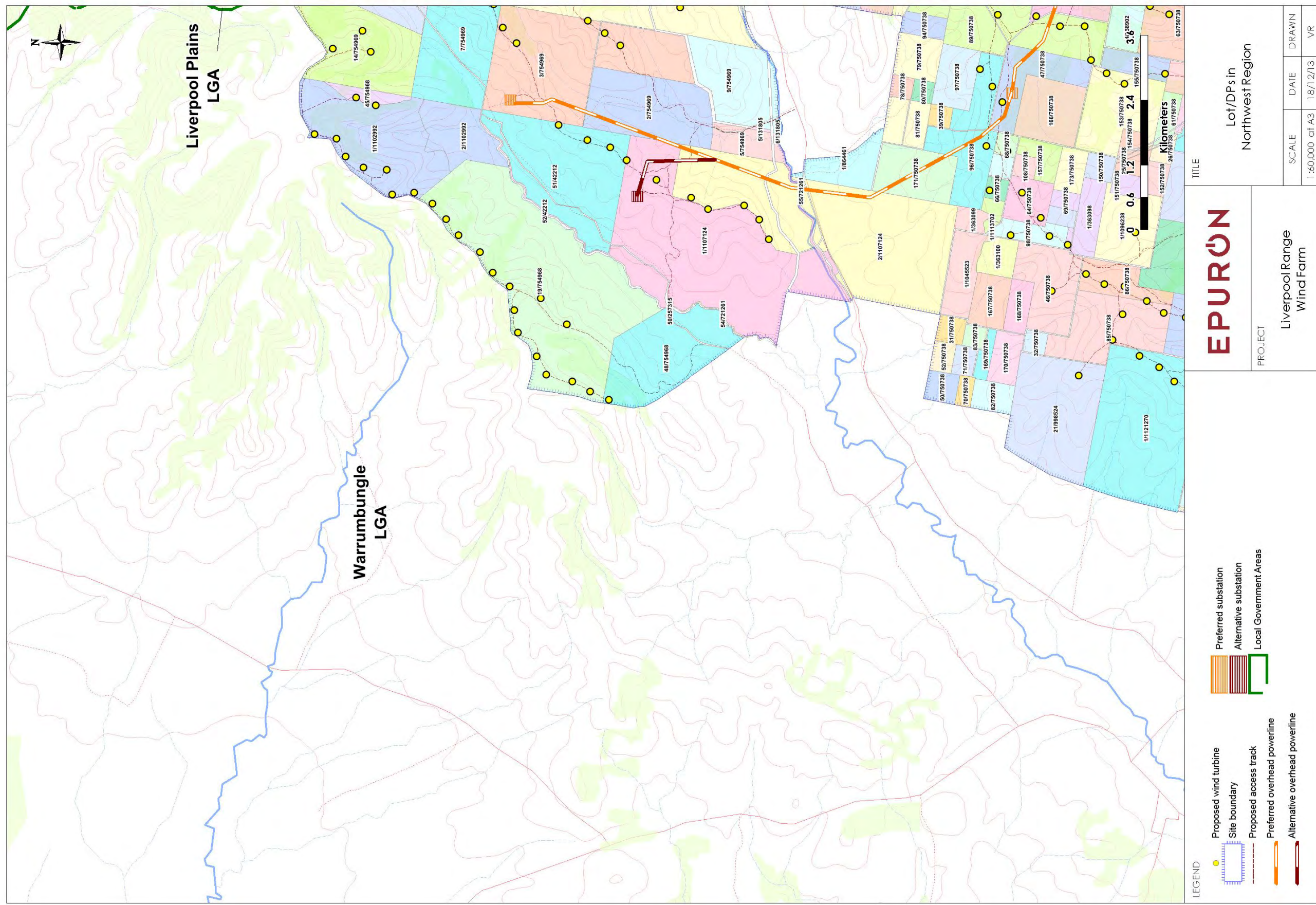


Figure 2. Lot/DPs in Northwest Region.

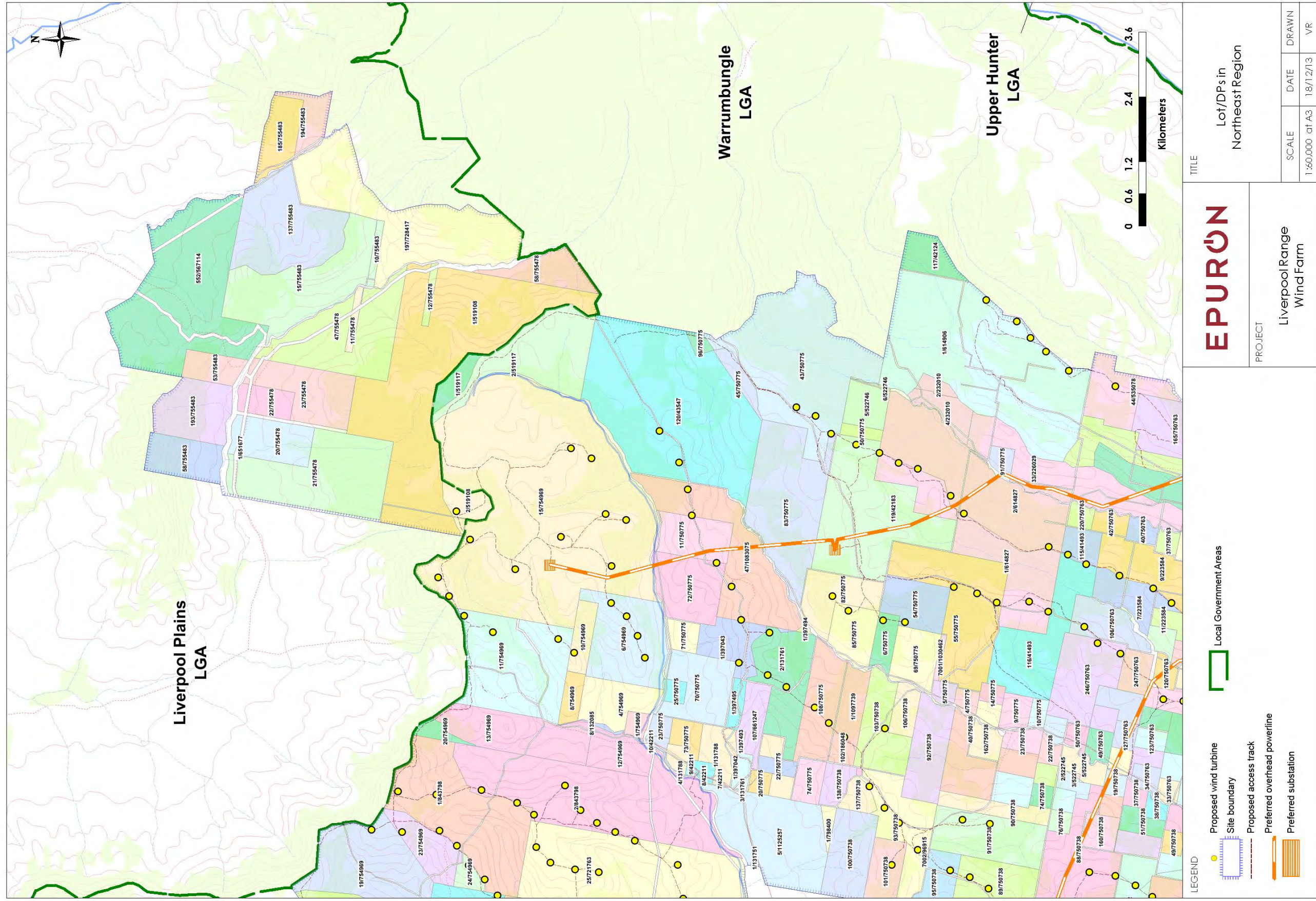


Figure 3. Lot/DPs in Northeast Region.

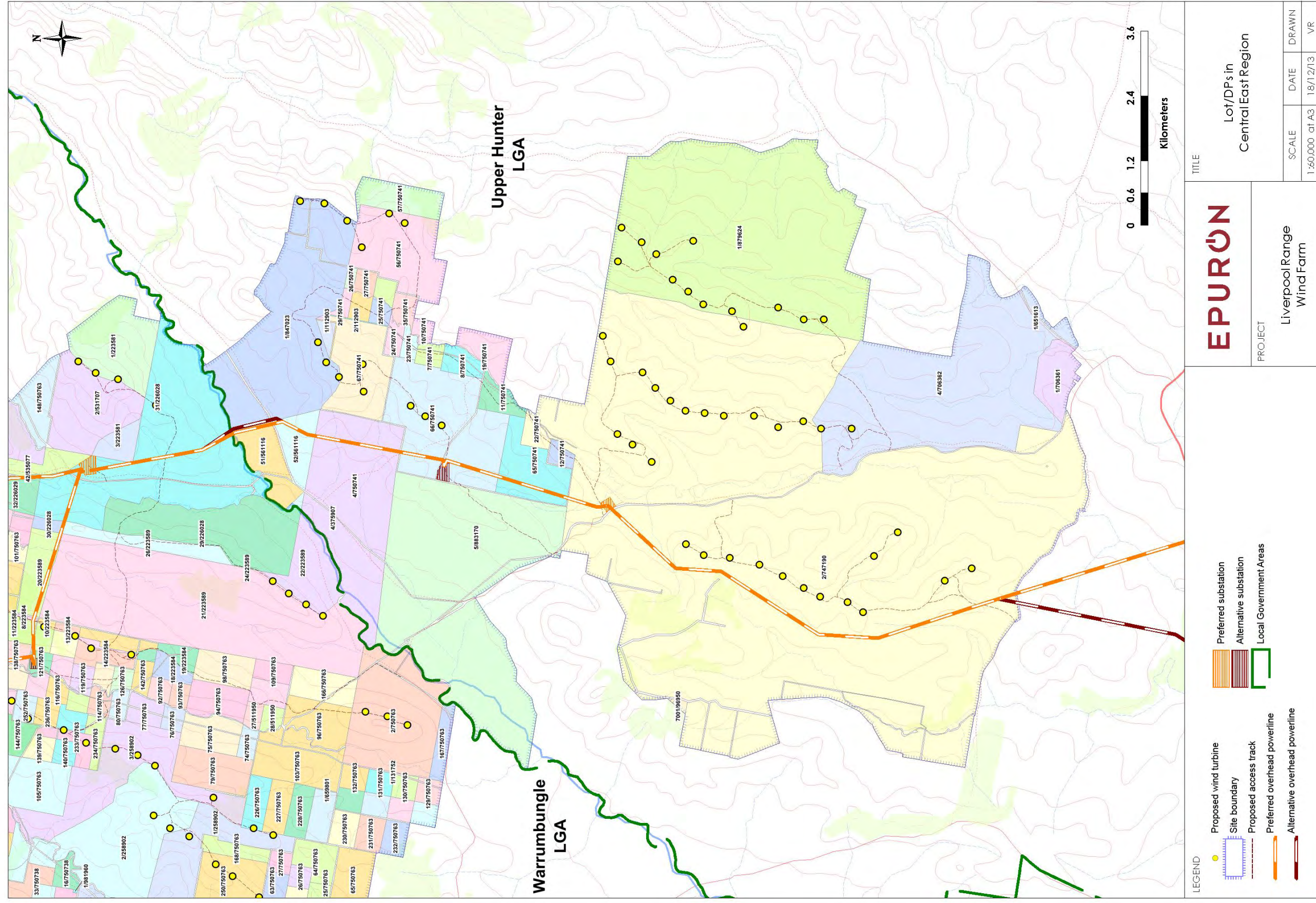
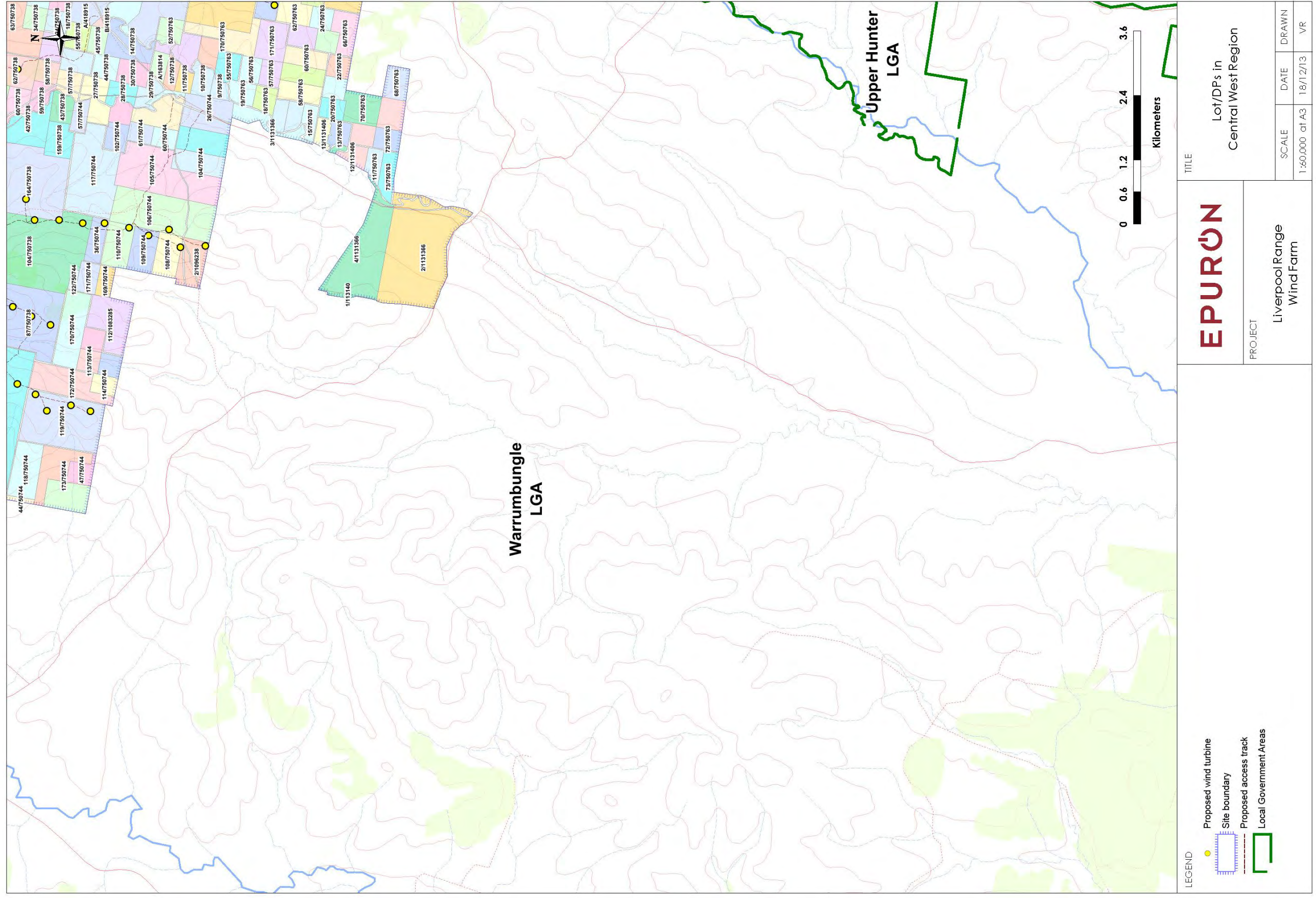


Figure 4. Lot/DPs in Central East Region.



<p>EPURON</p> <p>PROJECT</p> <p>LiverpoolRange WindFarm</p>	<p>TITLE</p> <p>Lot/DPs in Central West Region</p>	
	<p>SCALE</p> <p>1:60,000 at A3</p>	<p>DATE</p> <p>18/12/13</p>
		<p>DRAWN</p> <p>VR</p>

Figure 5. Lot/DPs in Central West Region.

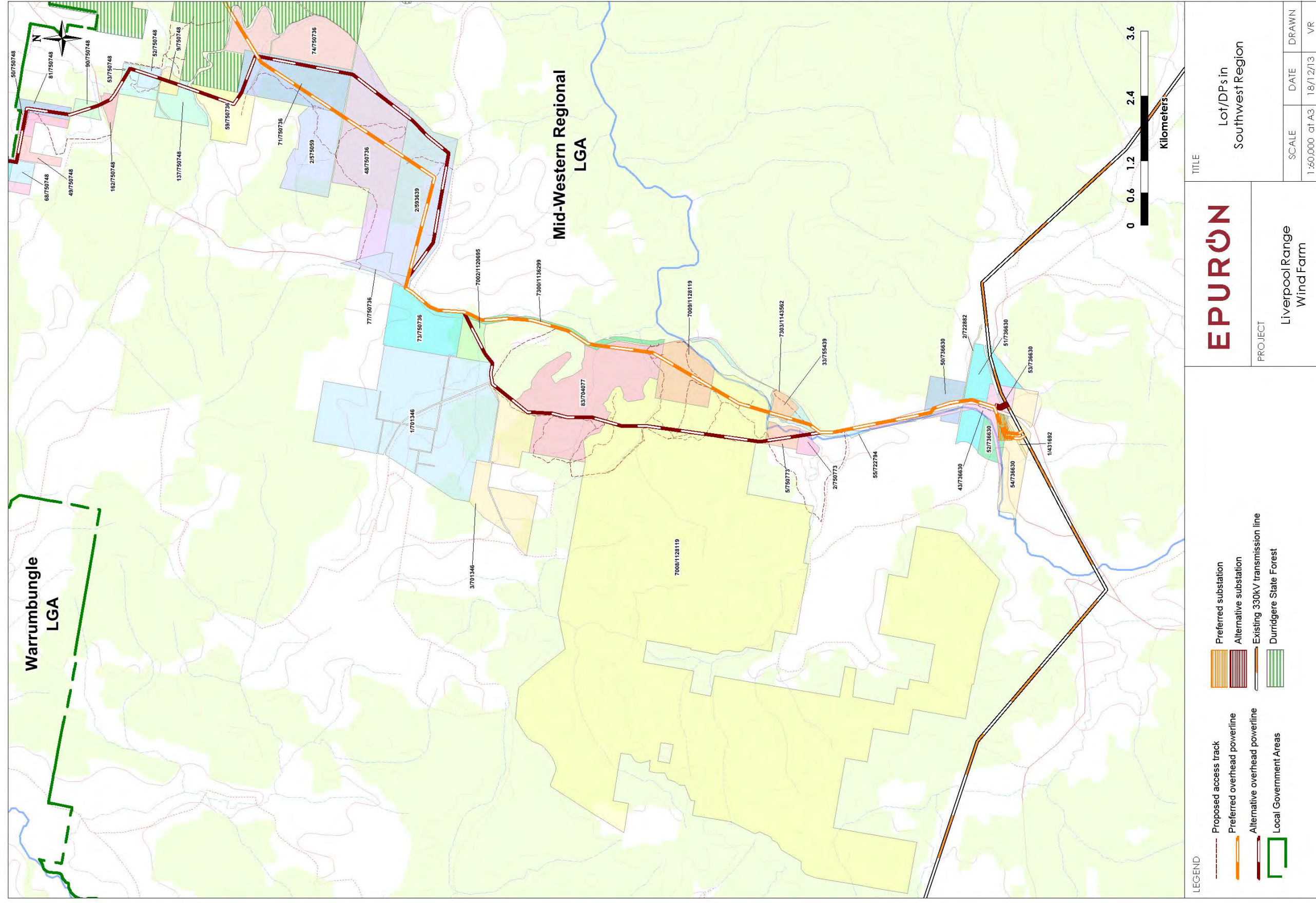


Figure 7. Lot/DPs in Southwest Region.

Attachment 3 – Residence Coordinate



<i>Residence ID</i>	<i>Easting</i>	<i>Northing</i>
B12-2	759,392	6,441,1364
B5-6	759,412	6,475,153
B5-7	759,494	6,475,275
B6-8	759,315	6,473,604
B6-9	759,330	6,473,411
B6-10	759,459	6,474,801
B6-11	759,597	6,472,970
C11-2	763,803	6,447,924
C11-3	763,827	6,447,931
C12-1	761,007	6,443,118
C12-2	763,029	6,443,367
C12-3	764,051	6,440,189
C12-1	764,054	6,440,167
C12-2	764,926	6,442,030
C12-3	764,985	6,441,431
C13-1	761,882	6,436,371
C13-2	761,940	6,439,124
C13-3	761,951	6,439,124
C13-1	763,838	6,439,665
C13-2	763,876	6,438,764
C13-3	763,901	6,439,711
C13-4	764,142	6,438,093
C13-6	764,317	6,436,297
C13-7	764,439	6,439,522
C14-1	762,706	6,434,717
C14-2	764,674	6,431,931
C15-1	764,883	6,425,917
C2-3	764,134	6,490,350
C2-4	764,191	6,490,559
C4-1	761,908	6,482,895
C4-2	762,190	6,481,915
C4-3	762,238	6,481,795
C4-4	762,874	6,481,513
C4-5	762,878	6,482,423
C4-6	762,958	6,482,067
C4-7	762,958	6,482,433
C4-8	763,965	6,482,463
C4-9	764,371	6,480,560
C5-1	760,070	6,475,843
C5-2	760,190	6,475,987

<i>Residence ID</i>	<i>Easting</i>	<i>Northing</i>
C5-3	760,755	6,479,176
C5-4	760,800	6,477,141
C5-5	761,379	6,479,642
C5-6	761,460	6,477,801
C5-7	762,771	6,476,691
C5-8	762,926	6,476,796
C5-9	763,840	6,479,921
C5-10	764,398	6,479,612
C6-1	760,542	6,473,529
C6-2	762,522	6,472,569
C6-3	763,886	6,471,207
C6-4	764,351	6,470,201
C7-1	764,232	6,469,712
C7-2	764,972	6,468,258
D10-1	765,303	6,451,599
D10-2	766,900	6,452,324
D10-4	767,015	6,451,874
D10-5	768,202	6,451,763
D10-6	768,302	6,451,187
D10-7	769,156	6,451,460
D11-1	765,386	6,445,145
D11-2	768,385	6,447,807
D11-3	768,613	6,448,262
D11-4	769,745	6,445,682
D12-1	765,053	6,441,167
D12-2	765,435	6,440,364
D12-3	765,480	6,441,020
D12-4	765,685	6,440,863
D12-5	766,125	6,440,950
D12-6	766,142	6,443,760
D12-7	766,159	6,443,727
D12-8	766,264	6,441,160
D12-9	766,276	6,442,860
D12-10	766,548	6,440,352
D12-11	767,268	6,443,112
D12-12	767,324	6,442,270
D12-13	767,438	6,443,075
D12-14	767,614	6,442,820
D12-15	767,856	6,443,309
D12-16	768,076	6,443,334

<i>Residence ID</i>	<i>Easting</i>	<i>Northing</i>
D12-17	768,117	6,444,534
D12-18	768,326	6,442,034
D12-19	768,374	6,441,914
D12-20	768,793	6,444,903
D12-21	769,013	6,443,991
D12-22	769,786	6,444,587
D13-1	766,454	6,436,196
D13-2	766,505	6,439,870
D13-3	767,059	6,436,571
D13-4	767,104	6,436,627
D13-5	767,667	6,436,290
D13-6	767,721	6,436,001
D13-7	768,039	6,435,990
D13-8	768,118	6,437,797
D13-9	769,780	6,436,434
D13-10	769,815	6,435,656
D14-1	765,278	6,431,951
D14-2	765,347	6,431,575
D4-1	765,422	6,484,412
D4-2	765,727	6,484,644
D4-3	766,088	6,484,562
D4-4	766,362	6,484,106
D4-5	766,906	6,481,291
D4-6	768,370	6,481,475
D4-7	769,558	6,484,285
D4-8	769,576	6,484,342
D4-9	769,800	6,482,050
D6-1	769,184	6,472,228
D6-2	769,411	6,471,608
D6-3	769,414	6,471,866
D7-1	765,177	6,468,242
D7-2	767,488	6,468,138
D7-3	768,296	6,469,155
D7-4	768,469	6,469,763
D7-5	769,535	6,469,184
D7-6	769,644	6,469,327
D7-7	769,734	6,466,440
D8-4	769,927	6,463,730
D9-2	769,985	6,455,781
E1-1	773,391	6,496,054

<i>Residence ID</i>	<i>Easting</i>	<i>Northing</i>
E10-1	771,187	6,453,754
E10-2	771,623	6,450,598
E10-3	771,845	6,452,199
E10-4	771,874	6,452,975
E10-5	771,929	6,452,506
E11-1	770,139	6,449,472
E11-2	771,514	6,449,094
E11-3	771,545	6,449,122
E11-4	772,077	6,447,142
E11-5	772,087	6,445,815
E11-6	772,918	6,447,441
E11-7	772,943	6,448,492
E11-8	773,425	6,447,854
E11-9	773,560	6,447,498
E12-1	774,711	6,440,138
E12-2	774,714	6,440,068
E2-1	774,854	6,493,728
E3-2	774,634	6,485,402
E3-3	774,826	6,485,037
E4-1	773,390	6,484,129
E4-2	773,466	6,484,080
E4-3	773,492	6,484,278
E4-4	773,616	6,482,725
E4-5	774,406	6,484,563
E4-6	774,681	6,484,593
E5-1	773,065	6,475,200
E5-2	773,092	6,475,057
E5-3	774,485	6,478,428
E5-4	774,532	6,478,237
E5-5	774,556	6,478,244
E5-6	774,620	6,478,043
E6-1	771,386	6,473,570
E6-2	773,187	6,474,948
E7-1	770,093	6,466,051
E7-2	770,164	6,465,993
E8-1	770,133	6,464,104
E9-1	770,377	6,455,246
E9-3	771,809	6,455,318
E9-4	772,890	6,459,717
F11-1	777,113	6,448,701

<i>Residence ID</i>	<i>Easting</i>	<i>Northing</i>
F12-1	775,479	6,440,651
F12-2	775,637	6,444,355
F12-3	777,933	6,442,759
F2-1	775,382	6,493,341
F2-2	776,225	6,493,044
F2-3	776,258	6,492,638
F2-4	776,417	6,492,338
F2-5	776,525	6,492,461
F6-1	779,283	6,470,731
F6-2	779,289	6,470,778
F6-3	779,360	6,470,786
F6-4	779,804	6,470,050
F7-1	775,970	6,469,502
F7-2	776,035	6,469,752
F7-3	776,084	6,469,736
F7-4	776,870	6,467,660
F7-5	777,002	6,467,659
F7-6	777,255	6,468,058
F8-1	777,698	6,464,852
F9-1	775,364	6,456,611
F9-2	779,611	6,455,812
F9-3	779,714	6,455,866
F9-4	779,892	6,456,264
F9-5	779,898	6,456,207

<i>Residence ID</i>	<i>Easting</i>	<i>Northing</i>
F9-6	779,913	6,456,165
F9-7	779,942	6,456,248
G10-1	780,504	6,453,557
G10-2	780,694	6,453,578
G10-3	780,764	6,453,747
G10-4	780,852	6,453,776
G10-5	780,994	6,453,869
G10-7	781,115	6,453,948
G10-8	781,147	6,453,997
G2-1	780,254	6,492,574
G2-2	781,560	6,492,081
G2-3	781,848	6,491,865
G4-1	781,170	6,482,977
G6-1	781,085	6,470,560
G6-2	782,538	6,471,887
G6-3	783,765	6,473,517
G9-1	782,075	6,455,530
G9-2	782,098	6,456,061
G9-3	782,953	6,455,739
H6-1	785,415	6,474,126
H6-3	786,868	6,470,984
H7-1	785,125	6,465,108
H8-1	787,952	6,462,116
H9-1	785,676	6,459,623

Attachment 4 – Turbine Coordinates

<i>Turbine ID</i>	<i>Easting</i>	<i>Northing</i>	<i>AHD</i>
C3-1	764,267	6,485,655	858
C3-2	764,424	6,485,998	880
C3-3	764,606	6,486,331	902
C3-4	764,734	6,486,809	940
C5-1	764,362	6,474,877	870
C5-2	764,716	6,476,944	850
C5-3	764,609	6,475,171	850
C6-4	763,962	6,473,880	825
C6-5	763,851	6,473,510	816
C6-6	763,858	6,474,324	842
C6-7	764,167	6,474,538	846
D2-1	768,529	6,489,772	1020
D2-2	768,577	6,490,200	1040
D2-3	768,774	6,490,528	1040
D2-4	769,109	6,490,703	1060
D2-5	769,193	6,491,105	1069
D2-7	769,725	6,489,975	1036
D2-8	769,873	6,490,338	1040
D3-10	767,316	6,488,442	879
D3-11	767,619	6,488,667	940
D3-12	767,905	6,488,924	940
D3-13	768,103	6,489,262	940
D3-15	768,071	6,489,664	961
D3-16	768,706	6,485,319	777
D3-17	768,942	6,485,623	780
D3-18	769,077	6,486,050	799
D3-2	765,070	6,486,992	918
D3-20	769,364	6,486,587	800
D3-3	765,517	6,487,338	919
D3-4	765,671	6,486,432	900
D3-5	765,928	6,487,403	960
D3-6	766,153	6,486,914	920
D3-7	766,371	6,487,494	949
D3-8	766,621	6,487,807	878
D3-9	767,004	6,488,042	872
D4-1	767,243	6,482,687	711
D4-2	767,611	6,482,866	770
D4-4	767,804	6,483,810	790

<i>Turbine ID</i>	<i>Easting</i>	<i>Northing</i>	<i>AHD</i>
D4-5	767,868	6,483,146	780
D4-6	768,013	6,484,128	763
D4-8	768,340	6,484,770	780
D5-1	764,872	6,475,454	850
D5-10	766,415	6,476,470	950
D5-11	766,603	6,476,812	913
D5-12	767,367	6,475,892	848
D5-13	767,143	6,477,146	869
D5-14	767,808	6,474,713	840
D5-15	767,303	6,477,485	878
D5-16	767,320	6,478,205	866
D5-17	768,108	6,477,995	890
D5-18	767,644	6,477,650	879
D5-19	768,151	6,478,599	883
D5-2	765,079	6,475,815	851
D5-21	768,879	6,478,264	880
D5-22	768,975	6,478,651	888
D5-23	769,784	6,478,362	889
D5-3	765,379	6,476,318	914
D5-4	765,798	6,474,962	891
D5-5	765,881	6,475,371	890
D5-6	766,101	6,475,679	930
D5-7	765,853	6,476,132	933
D5-8	766,284	6,477,441	870
D5-9	766,371	6,476,094	942
D6-1	765,620	6,474,610	840
D6-10	767,421	6,474,554	839
D6-11	765,461	6,474,258	788
D6-2	766,913	6,471,836	729
D6-3	766,934	6,471,367	728
D6-4	767,127	6,472,425	732
D6-5	767,243	6,472,045	731
D6-6	767,271	6,472,790	755
D6-7	767,361	6,473,248	770
D6-8	767,356	6,473,655	780
D6-9	767,419	6,474,100	781
E2-3	770,714	6,490,065	1049
E2-4	770,774	6,490,770	1059

<i>Turbine ID</i>	<i>Easting</i>	<i>Northing</i>	<i>AHD</i>
E2-5	771,102	6,490,217	1032
E3-10	771,597	6,487,787	920
E3-11	771,893	6,488,024	980
E3-12	772,155	6,488,316	1000
E3-13	772,519	6,488,535	1000
E3-14	772,795	6,488,857	980
E3-15	772,771	6,489,554	1002
E3-16	773,462	6,488,920	980
E3-17	773,523	6,489,630	1040
E3-18	772,809	6,490,126	1003
E3-19	773,547	6,488,078	940
E3-20	773,313	6,487,417	978
E3-21	773,094	6,487,107	979
E3-22	772,491	6,487,064	972
E3-23	772,199	6,486,798	980
E3-24	772,073	6,486,348	960
E3-25	772,026	6,485,906	940
E3-26	773,631	6,486,533	960
E3-27	773,174	6,486,241	960
E3-28	772,938	6,485,936	960
E3-29	772,768	6,485,595	898
E3-30	772,611	6,485,236	860
E3-4	770,832	6,485,440	815
E3-5	770,876	6,487,368	846
E3-6	771,061	6,485,729	880
E3-7	771,164	6,487,616	899
E3-8	771,289	6,486,039	860
E4-1	772,157	6,480,467	910
E4-10	774,793	6,481,632	902
E4-11	771,536	6,484,335	800
E4-12	772,157	6,484,436	840
E4-2	772,939	6,480,332	920
E4-3	773,216	6,480,602	924
E4-5	773,621	6,480,883	917
E4-7	774,529	6,481,346	910
E4-8	774,691	6,480,596	920
E5-1	770,127	6,476,095	863
E5-10	771,190	6,477,293	917
E5-11	771,379	6,477,732	889
E5-12	771,399	6,478,445	889

<i>Turbine ID</i>	<i>Easting</i>	<i>Northing</i>	<i>AHD</i>
E5-13	771,407	6,475,263	805
E5-14	771,566	6,475,625	845
E5-15	771,718	6,478,669	888
E5-17	771,777	6,475,943	880
E5-18	771,935	6,479,013	898
E5-19	771,956	6,476,318	912
E5-2	770,076	6,478,547	890
E5-20	772,028	6,476,797	920
E5-21	772,056	6,479,383	897
E5-23	772,438	6,479,983	892
E5-24	772,999	6,479,156	880
E5-26	772,920	6,478,645	890
E5-3	770,307	6,475,342	799
E5-4	770,314	6,476,427	901
E5-6	770,565	6,476,714	910
E5-7	770,391	6,478,774	900
E5-8	771,190	6,476,835	916
E6-1	771,426	6,470,084	727
E6-10	772,837	6,472,109	780
E6-11	772,835	6,470,561	750
E6-13	773,075	6,472,419	780
E6-14	773,408	6,471,305	779
E6-17	773,994	6,472,394	780
E6-18	774,197	6,472,718	770
E6-2	771,559	6,470,459	734
E6-20	774,309	6,473,134	780
E6-21	774,422	6,473,676	780
E6-22	774,655	6,474,088	789
E6-24	774,874	6,474,745	810
E6-25	770,232	6,474,872	770
E6-4	771,949	6,470,953	760
E6-5	772,167	6,471,265	770
E6-7	772,707	6,470,195	732
E6-9	772,689	6,471,761	793
E7-6	774,748	6,467,705	660
E7-7	774,913	6,468,081	660
E7-8	774,999	6,468,488	649
F3-10	776,773	6,485,385	960
F3-11	777,019	6,485,678	980
F3-12	777,148	6,488,678	1004

<i>Turbine ID</i>	<i>Easting</i>	<i>Northing</i>	<i>AHD</i>
F3-14	777,496	6,488,887	1037
F3-18	777,646	6,487,456	1040
F3-19	777,710	6,485,668	1004
F3-24	778,247	6,486,603	1080
F3-25	778,198	6,488,290	1048
F3-27	778,566	6,485,399	1019
F3-28	778,673	6,485,773	1024
F3-29	778,726	6,488,547	1072
F3-3	776,102	6,486,364	920
F3-35	779,706	6,486,038	1020
F3-37	779,894	6,486,420	1080
F3-4	776,009	6,485,046	860
F3-5	776,352	6,486,655	902
F3-6	776,415	6,485,184	880
F3-7	776,484	6,487,872	920
F3-8	776,788	6,488,401	964
F4-10	777,151	6,481,564	928
F4-12	776,663	6,480,221	896
F4-14	777,770	6,483,715	920
F4-2	775,083	6,481,896	906
F4-22	779,135	6,484,253	940
F4-24	779,511	6,479,984	950
F4-25	779,625	6,480,335	950
F4-26	779,634	6,484,412	1000
F4-28	779,809	6,480,692	946
F4-29	779,960	6,481,127	979
F4-3	775,463	6,482,426	910
F4-31	778,650	6,484,175	911
F4-33	775,913	6,483,306	905
F4-34	776,709	6,483,257	930
F4-4	775,685	6,482,767	900
F4-5	776,474	6,482,738	920
F4-7	776,704	6,480,627	930
F4-8	776,875	6,481,267	930
F4-9	777,331	6,483,435	939
F5-1	775,203	6,475,050	770
F5-10	776,862	6,477,556	908
F5-14	777,048	6,477,913	920
F5-15	777,023	6,475,273	830
F5-16	777,032	6,478,516	920

<i>Turbine ID</i>	<i>Easting</i>	<i>Northing</i>	<i>AHD</i>
F5-17	777,294	6,475,612	820
F5-18	777,199	6,478,879	920
F5-19	777,534	6,476,242	830
F5-2	775,234	6,475,426	780
F5-20	777,322	6,479,313	909
F5-24	777,743	6,476,858	890
F5-25	777,922	6,477,194	871
F5-26	778,065	6,477,548	847
F5-27	778,687	6,479,123	905
F5-29	779,012	6,479,376	917
F5-7	776,086	6,476,221	830
F5-8	776,274	6,476,641	867
F5-9	776,583	6,476,889	844
F6-10	776,175	6,473,575	780
F6-11	776,408	6,473,879	780
F6-12	776,572	6,474,450	810
F6-13	776,727	6,474,836	820
F6-14	777,417	6,470,211	666
F6-7	776,059	6,472,837	760
F7-1	776,773	6,469,273	642
F7-2	776,986	6,469,585	670
F7-3	777,188	6,469,907	670
F8-1	777,133	6,460,050	650
F8-10	779,953	6,463,534	640
F8-2	777,290	6,460,358	649
F8-3	777,514	6,460,741	640
F8-4	777,725	6,461,179	630
F8-6	777,849	6,461,730	627
F8-7	777,904	6,462,206	630
F8-8	778,103	6,462,544	620
F8-9	779,629	6,463,172	640
F9-1	776,846	6,459,250	628
F9-2	777,031	6,459,541	640
F9-3	777,425	6,457,733	610
F9-4	777,662	6,457,241	600
F9-5	777,890	6,459,054	640
F9-6	778,329	6,458,606	640
G4-2	780,169	6,481,590	1007
G4-3	780,212	6,484,775	1000
G4-4	780,494	6,481,880	1009

<i>Turbine ID</i>	<i>Easting</i>	<i>Northing</i>	<i>AHD</i>
G4-5	780,657	6,482,236	1010
G5-10	782,252	6,478,146	880
G5-12	782,644	6,478,708	880
G5-4	781,047	6,476,314	780
G5-6	781,337	6,477,178	870
G5-8	781,690	6,477,602	864
G5-9	781,943	6,477,891	880
G6-3	780,682	6,472,379	735
G6-4	781,163	6,473,079	840
G6-6	781,283	6,473,492	850
G6-7	781,492	6,473,813	858
G7-1	780,312	6,467,072	740
G7-10	783,615	6,468,558	770
G7-11	784,103	6,468,825	780
G7-12	784,240	6,468,049	730
G7-14	784,066	6,467,762	711
G7-15	784,426	6,469,246	763
G7-16	784,471	6,469,700	772
G7-2	780,477	6,467,375	740
G7-3	780,675	6,467,650	740
G7-4	780,934	6,468,523	757
G7-6	781,209	6,468,977	767
G7-7	781,448	6,468,539	761
G7-8	781,481	6,469,214	780
G7-9	781,848	6,469,371	761
G8-1	780,148	6,463,809	636
G8-10	780,769	6,462,832	646
G8-11	781,000	6,463,107	659
G8-12	781,295	6,463,343	660
G8-14	781,493	6,463,939	671
G8-15	781,972	6,464,084	679
G8-16	782,137	6,461,473	640
G8-17	782,273	6,459,982	582
G8-18	782,275	6,460,354	590
G8-19	782,430	6,461,682	650
G8-2	780,277	6,460,830	638
G8-20	782,552	6,462,222	650
G8-21	782,790	6,462,499	651
G8-22	783,015	6,462,789	652
G8-23	783,485	6,463,093	661

<i>Turbine ID</i>	<i>Easting</i>	<i>Northing</i>	<i>AHD</i>
G8-24	783,709	6,463,358	669
G8-25	783,351	6,463,802	661
G8-26	783,736	6,462,401	650
G8-27	783,974	6,463,734	661
G8-3	780,383	6,460,362	630
G8-4	780,486	6,461,281	640
G8-5	780,490	6,461,838	634
G8-6	780,584	6,462,549	641
G8-7	780,542	6,462,189	640
G8-9	782,495	6,460,832	570
G9-28	780,253	6,460,030	603
G9-29	780,247	6,459,465	610

Attachment 5 – Letter Confirming Part 3A Position



Attachment 6 – Director General's Requirements and Supplementary Director General's Requirements



Attachment 7 – Project Consultation Plan



Attachment 8 – Consultation Material



Appendix A – Landscape and Visual Assessment



Appendix B – Noise Assessment



Appendix C – Biodiversity Assessment



Appendix D – Aboriginal and European Heritage



Appendix E – Traffic and Transport Assessment



Appendix F – Telecommunications Impact Assessment



Appendix G – Decommissioning and Rehabilitation Plan



Appendix H - Addressing the Terms of Reference (TOR) for Matters of National Environmental Significance (MNES) for the proposed Liverpool Range Wind Farm and Transmission Line

