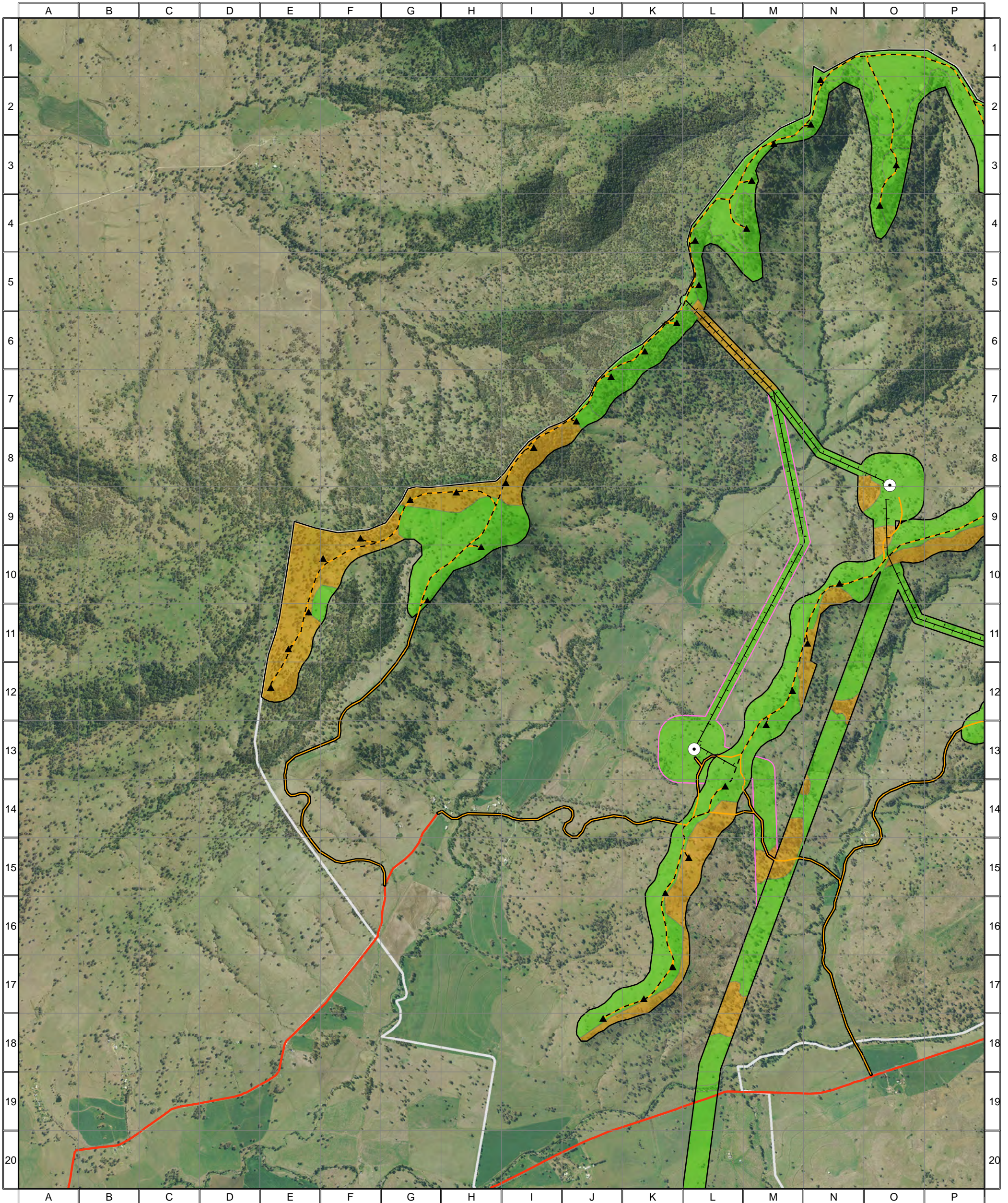


# 4777 - Liverpool Range (WF Study Area, Map 1) - Combined Flora and Fauna Constraints



## Combined Constraints

- High
- Moderate
- Low

- Combined Survey Area (Preferred Infrastructure Layout)
- Combined Survey Area (Alternative Infrastructure Layout)

- ▲ Indicative Turbine Locations
- Substations
- +— Overhead Powerlines
- - - Underground Powerlines
- Proposed Tracks
- Existing Roads
- Wind Farm Site Boundary



0 0.25 0.5 1 1.5 Kilometres

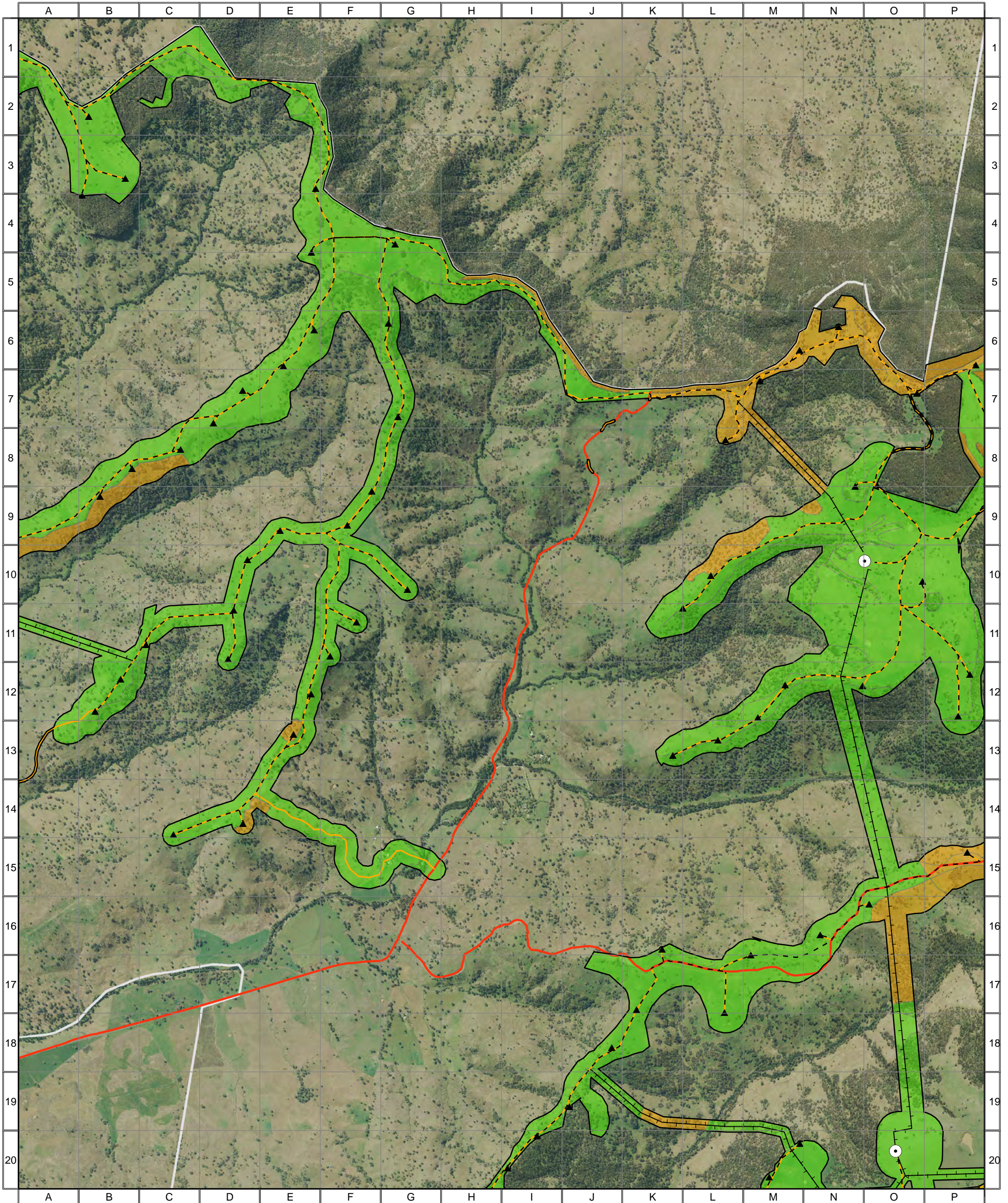
Approx. Scale @ A3 1:32500  
 Ref: 4777 - Liverpool Range Wind Farm  
 Produced by: Tom Hamilton  
 Date: 15 November 2013  
 Projection: GDA94 MGA Zone 55



*Based on Infrastructure datasets provided by Epuron (2011-2013)  
 Aerial Photography provided by Epuron (Aug. 2011)  
 (C) Copyright Commonwealth of Australia (Geoscience Australia) 2008*



# 4777 - Liverpool Range (WF Study Area, Map 2) - Combined Flora and Fauna Constraints



## Combined Constraints

- High
- Moderate
- Low

Combined Survey Area (Preferred Infrastructure Layout)

- Indicative Turbine Locations
- Substations
- Overhead Powerlines
- Underground Powerlines
- Proposed Tracks
- Existing Roads
- Wind Farm Site Boundary



0 0.25 0.5 1 1.5 Kilometres

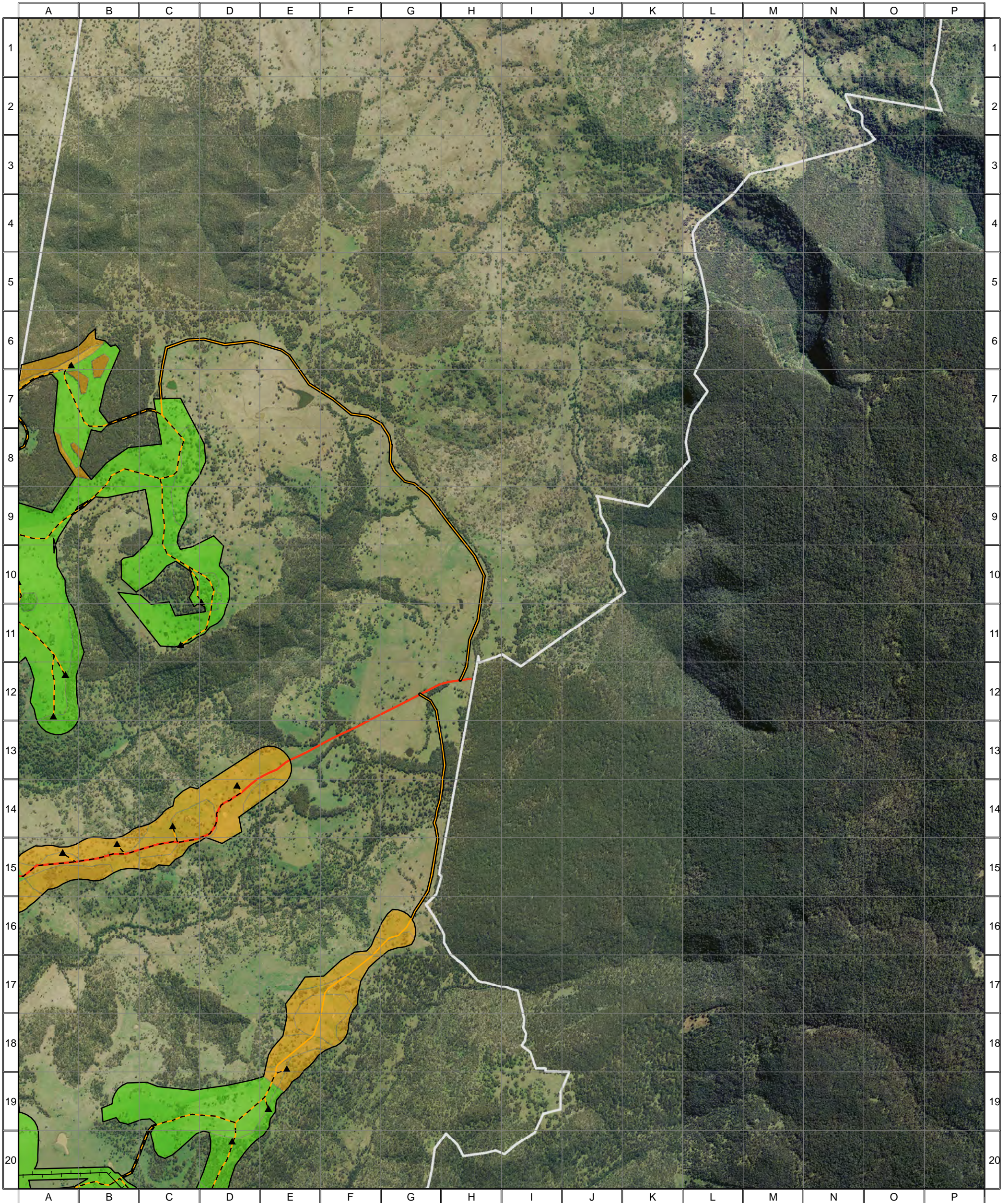
Approx. Scale @ A3 1:32500  
 Ref: 4777 - Liverpool Range Wind Farm  
 Produced by: Tom Hamilton  
 Date: 15 November 2013  
 Projection: GDA94 MGA Zone 55



*Based on Infrastructure datasets provided by Epuron (2011-2013)  
 Aerial Photography provided by Epuron (Aug. 2011)  
 (C) Copyright Commonwealth of Australia (Geoscience Australia) 2008*



# 4777 - Liverpool Range (WF Study Area, Map 3) - Combined Flora and Fauna Constraints



### Combined Constraints

- High
- Moderate
- Low

Combined Survey Area (Preferred Infrastructure Layout)

- Indicative Turbine Locations
- Substations
- Overhead Powerlines
- Underground Powerlines
- Proposed Tracks
- Existing Roads
- Wind Farm Site Boundary



0 0.25 0.5 1 1.5 Kilometres

Approx. Scale @ A3 1:32500

Ref: 4777 - Liverpool Range Wind Farm

Produced by: Tom Hamilton

Date: 15 November 2013

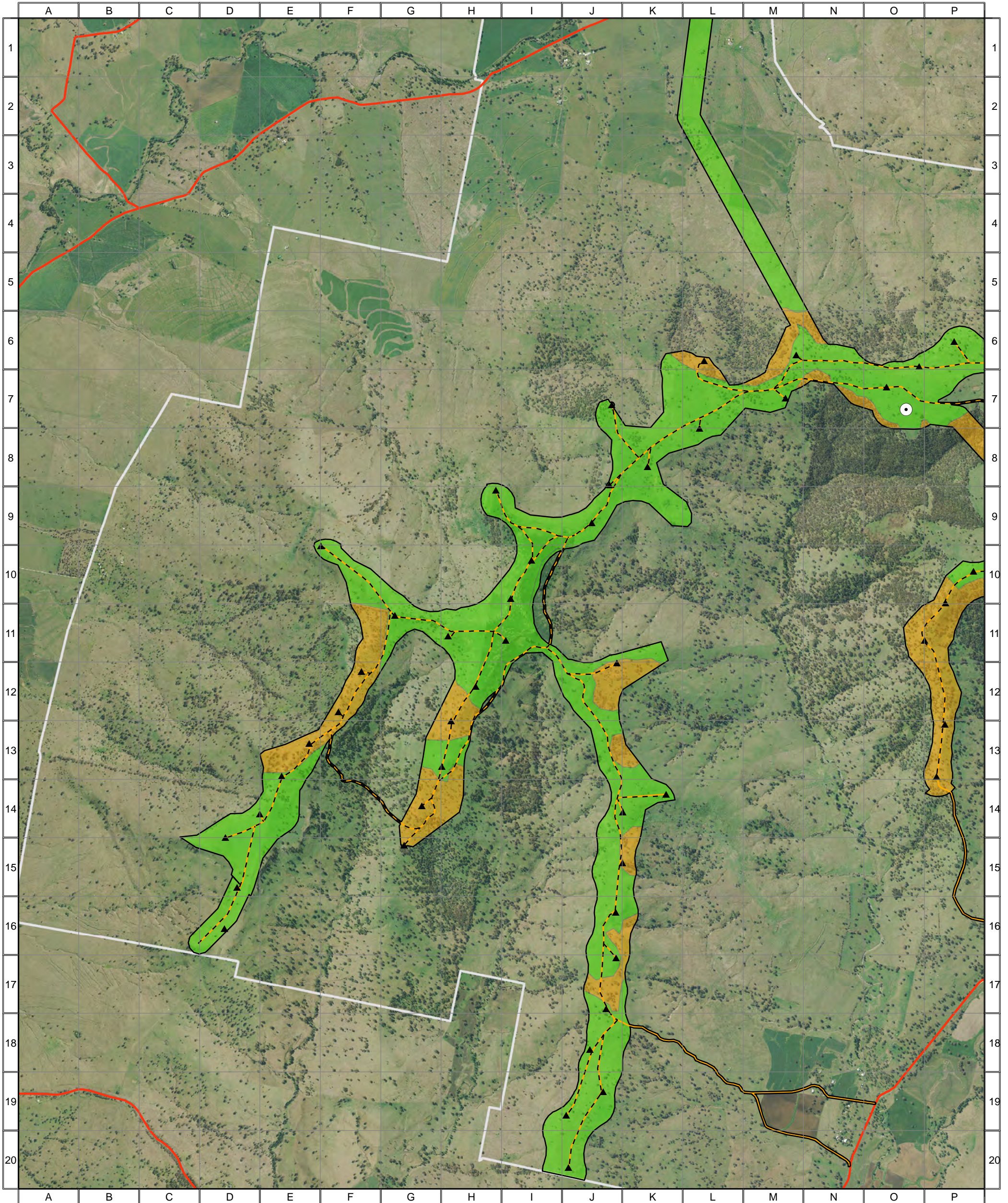
Projection: GDA94 MGA Zone 55

*Based on Infrastructure datasets provided by Epuron (2011-2013)  
Aerial Photography provided by Epuron (Aug. 2011)  
(C) Copyright Commonwealth of Australia (Geoscience Australia) 2008*





# 4777 - Liverpool Range (WF Study Area, Map 4) - Combined Flora and Fauna Constraints



## Combined Constraints

- High
- Moderate
- Low

Combined Survey Area (Preferred Infrastructure Layout)

- ▲ Indicative Turbine Locations
- Substations
- +— Overhead Powerlines
- - - Underground Powerlines
- Proposed Tracks
- Existing Roads
- Wind Farm Site Boundary



0 0.25 0.5 1 1.5 Kilometres

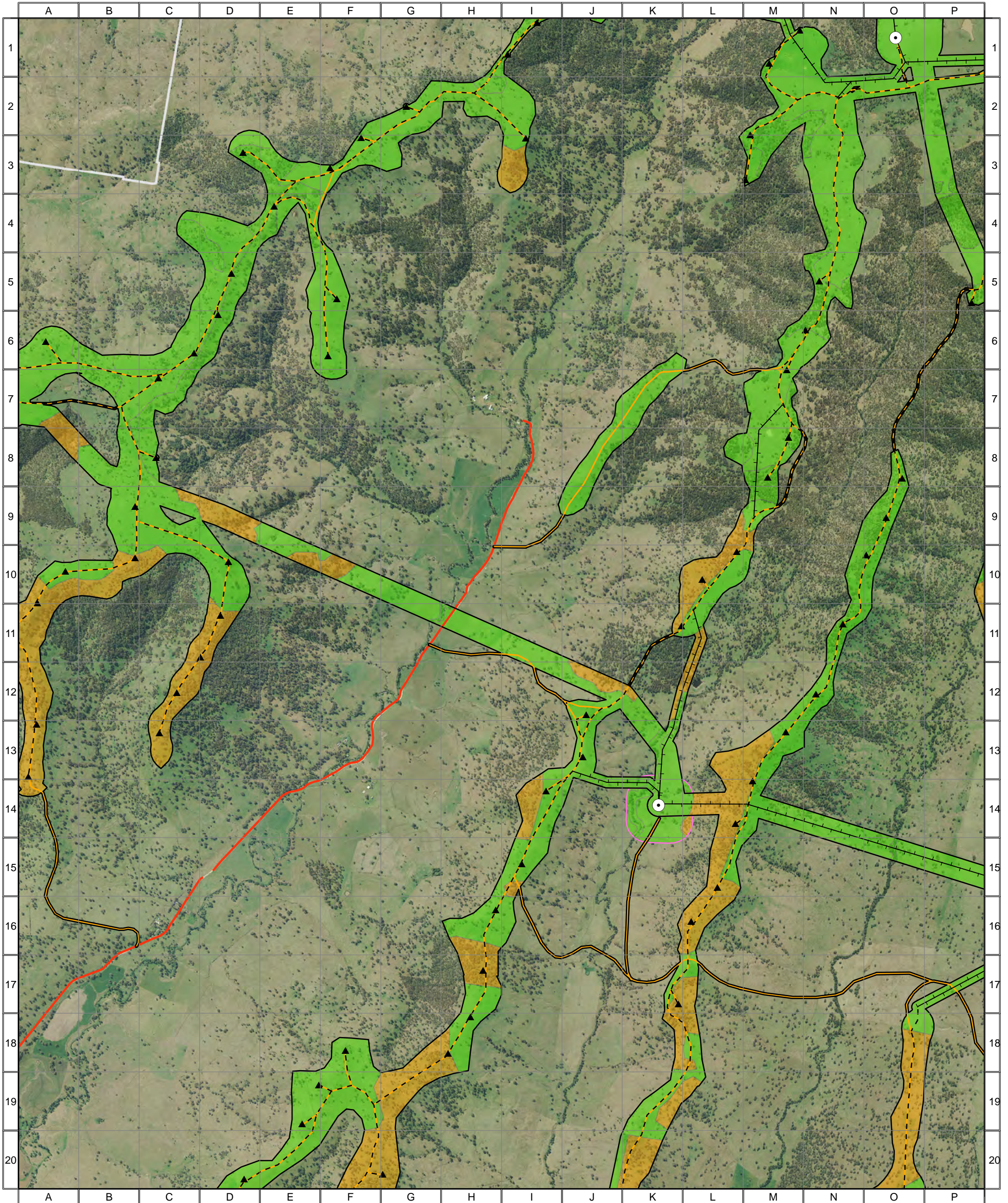
Approx. Scale @ A3 1:32500  
 Ref: 4777 - Liverpool Range Wind Farm  
 Produced by: Tom Hamilton  
 Date: 15 November 2013  
 Projection: GDA94 MGA Zone 55



*Based on Infrastructure datasets provided by Epuron (2011-2013)  
 Aerial Photography provided by Epuron (Aug. 2011)  
 (C) Copyright Commonwealth of Australia (Geoscience Australia) 2008*



# 4777 - Liverpool Range (WF Study Area, Map 5) - Combined Flora and Fauna Constraints



## Combined Constraints

- High
- Moderate
- Low

- Combined Survey Area (Preferred Infrastructure Layout)
- Combined Survey Area (Alternative Infrastructure Layout)

- ▲ Indicative Turbine Locations
- Substations
- +— Overhead Powerlines
- - - Underground Powerlines
- Proposed Tracks
- Existing Roads
- Wind Farm Site Boundary



0 0.25 0.5 1 1.5 Kilometres

Approx. Scale @ A3 1:32500  
 Ref: 4777 - Liverpool Range Wind Farm  
 Produced by: Tom Hamilton  
 Date: 15 November 2013  
 Projection: GDA94 MGA Zone 55



*Based on Infrastructure datasets provided by Epuron (2011-2013)  
 Aerial Photography provided by Epuron (Aug. 2011)  
 (C) Copyright Commonwealth of Australia (Geoscience Australia) 2008*