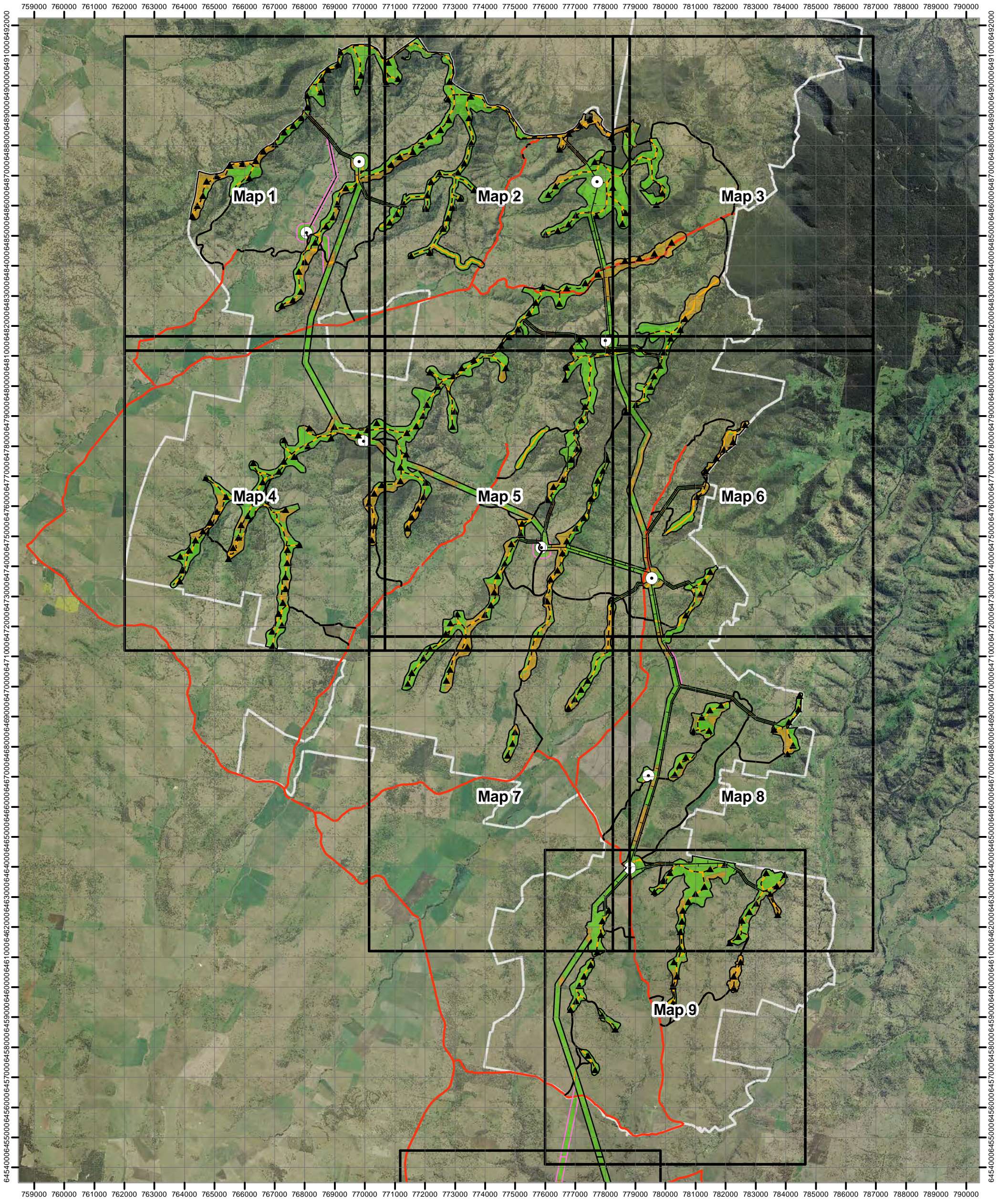


4777 - Liverpool Range (WF Study Area) - Combined Flora and Fauna Constraints



Combined Constraints

- High
- Moderate
- Low

- Combined Survey Area (Preferred Infrastructure Layout)
- Combined Survey Area (Alternative Infrastructure Layout)

- ▲ Indicative Turbine Locations
- Substations
- Overhead Powerlines
- Underground Powerlines
- Proposed Tracks
- Existing Roads
- Wind Farm Site Boundary



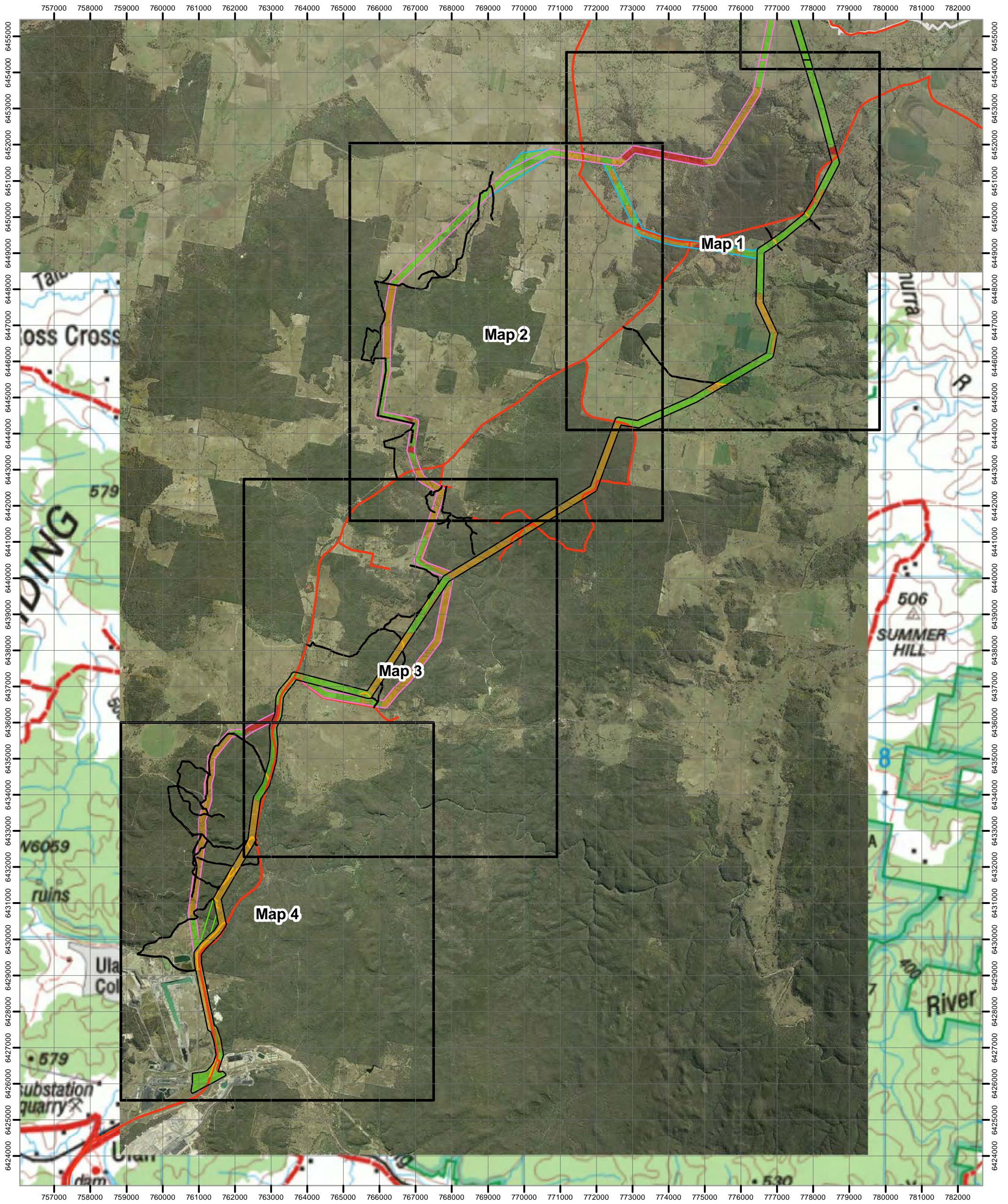
0 0.5 1 2 3 4 5 Kilometres

Approx. Scale @ A3 1:120000
 Ref: 4777 - Liverpool Range Wind Farm
 Produced by: Tom Hamilton
 Date: 15 November 2013
 Projection: GDA94 MGA Zone 55



*Based on Infrastructure datasets provided by Epuron (2011-2013)
 Aerial Photography provided by Epuron (Aug. 2011)
 (C) Copyright Commonwealth of Australia (Geoscience Australia) 2008*

4777 - Liverpool Range (TL Study Area) - Combined Flora and Fauna Constraints



Combined Constraints

- High
- Moderate
- Low

- Combined Survey Area (Preferred Infrastructure Layout)
- Proposed deviation for Square-tailed Kite nest buffer
- Combined Survey Area (Alternative Infrastructure Layout)
- Combined Survey Area (2nd Alternative Infrastructure Layout)

- ▲ Indicative Turbine Locations
- Substations
- Overhead Powerlines
- Underground Powerlines
- Proposed Tracks
- Existing Roads
- Wind Farm Site Boundary

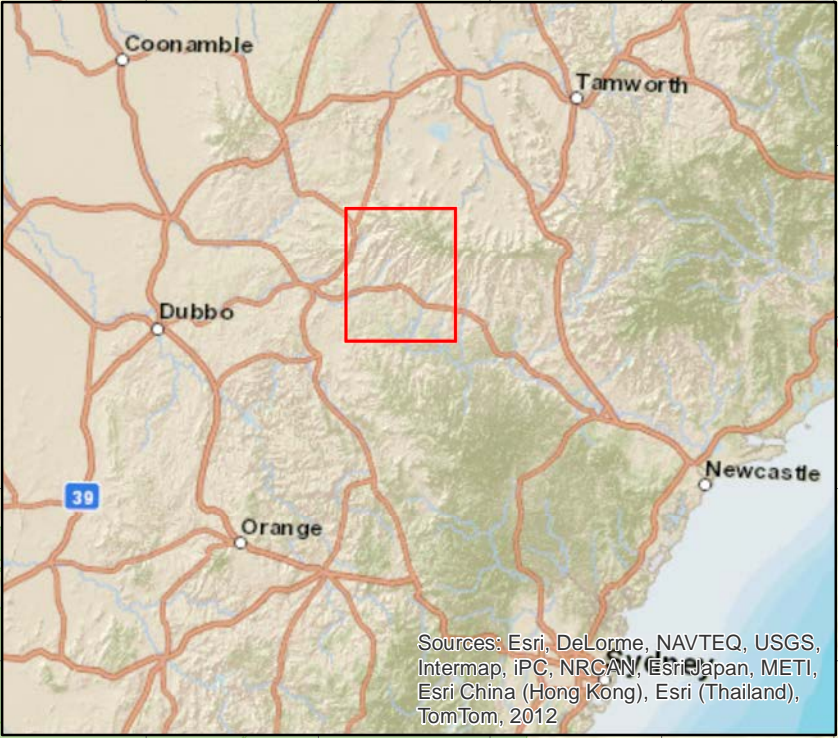
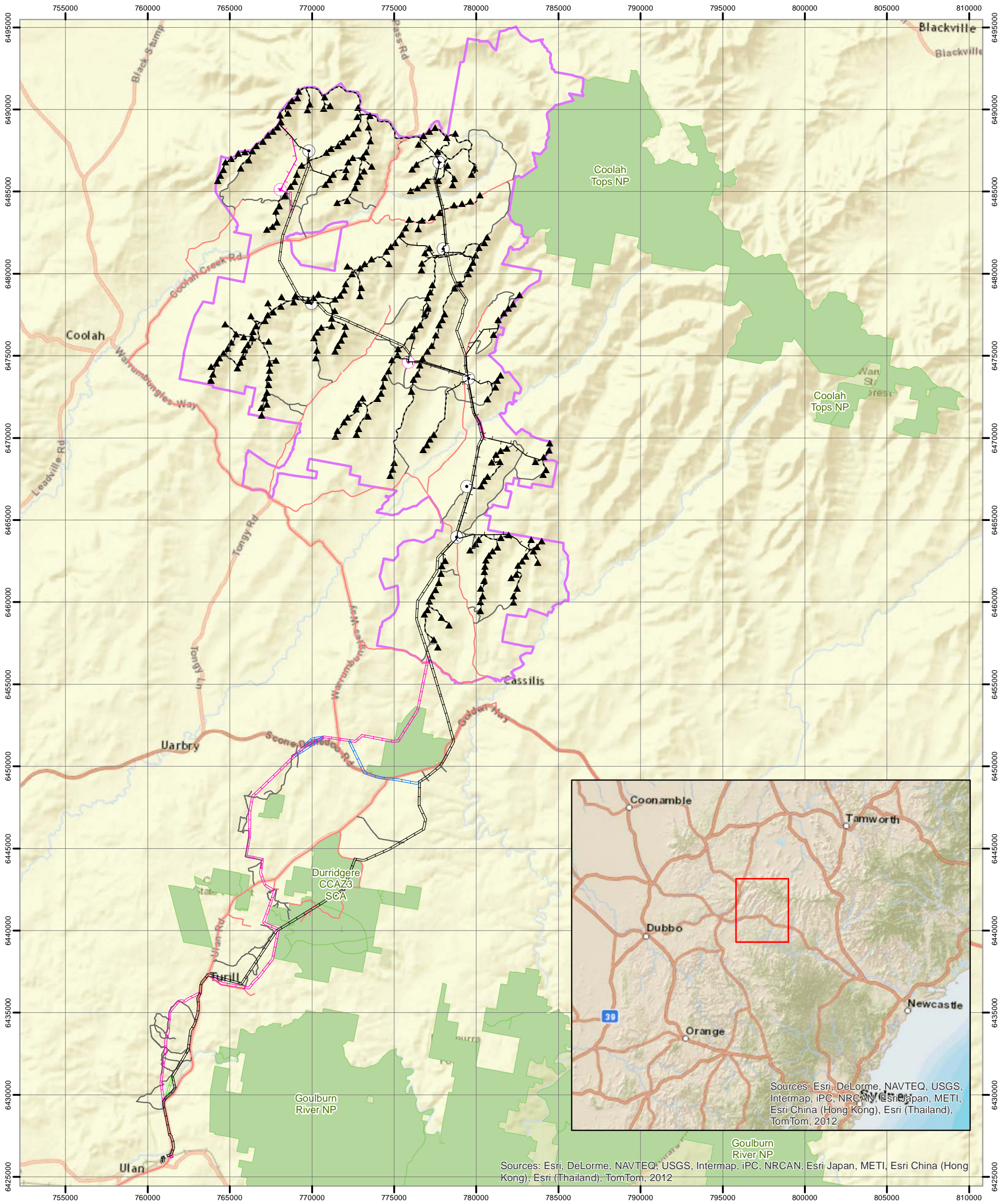
ngh environmental

0 0.5 1 2 3 4 5 Kilometres

Approx. Scale @ A3 1:100000
 Ref: 4777 - Liverpool Range Wind Farm
 Produced by: Tom Hamilton
 Date: 15 November 2013
 Projection: GDA94 MGA Zone 55


Based on Infrastructure datasets provided by Epuron (2011-2013)
 Aerial Photography provided by Epuron (Aug. 2011)
 (C) Copyright Commonwealth of Australia (Geoscience Australia) 2008

4777 - Liverpool Range Project Overview Map




Sources: Esri, DeLorme, NAVTEQ, USGS, Intermap, IPC, NRCAN, Esri Japan, METI, Esri China (Hong Kong), Esri (Thailand), TomTom, 2012

▲ Indicative Turbine Locations	— Transmission Lines (Preferred Alignment)
⋯ Underground Powerlines	— Proposed deviation for Square-tailed Kite nest buffer
— Overhead Powerlines (Preferred Alignment)	— Transmission Lines (Alternative Alignment)
— Overhead Powerlines (Alternative Alignment)	— Transmission Lines (2nd Alternative Alignment)
● Substations (Preferred Alignment)	— Proposed Tracks
● Substations (Alternative Alignment)	— Existing Roads
	— Wind Farm Site Boundary
	— NPWS Estate



0 1 2 4 6 8 10 Kilometres

Approx. Scale @ A3 1:220,000
 Ref: 4777 - Liverpool Range Wind Farm
 Produced by: Tom Hamilton
 Date: 15 November 2013
 Projection: GDA94 MGA Zone 55



Based on Infrastructure datasets provided by Epuron (Oct. and Nov. 2011)
 Aerial Photography provided by Epuron (Aug. 2011)
 (C) Copyright Commonwealth of Australia (Geoscience Australia) 2008
 (C) Office of Environment and Heritage (OEH) 2013

4777 - Liverpool Range (TL Study Area, Map 2) - Combined Flora and Fauna Constraints



Combined Constraints

- High
- Moderate
- Low

- Combined Survey Area (Preferred Infrastructure Layout)
- Combined Survey Area (Alternative Infrastructure Layout)
- Combined Survey Area (2nd Alternative Infrastructure Layout)

- Indicative Turbine Locations
- Substations
- Overhead Powerlines
- Underground Powerlines
- Proposed Tracks
- Existing Roads
- Wind Farm Site Boundary



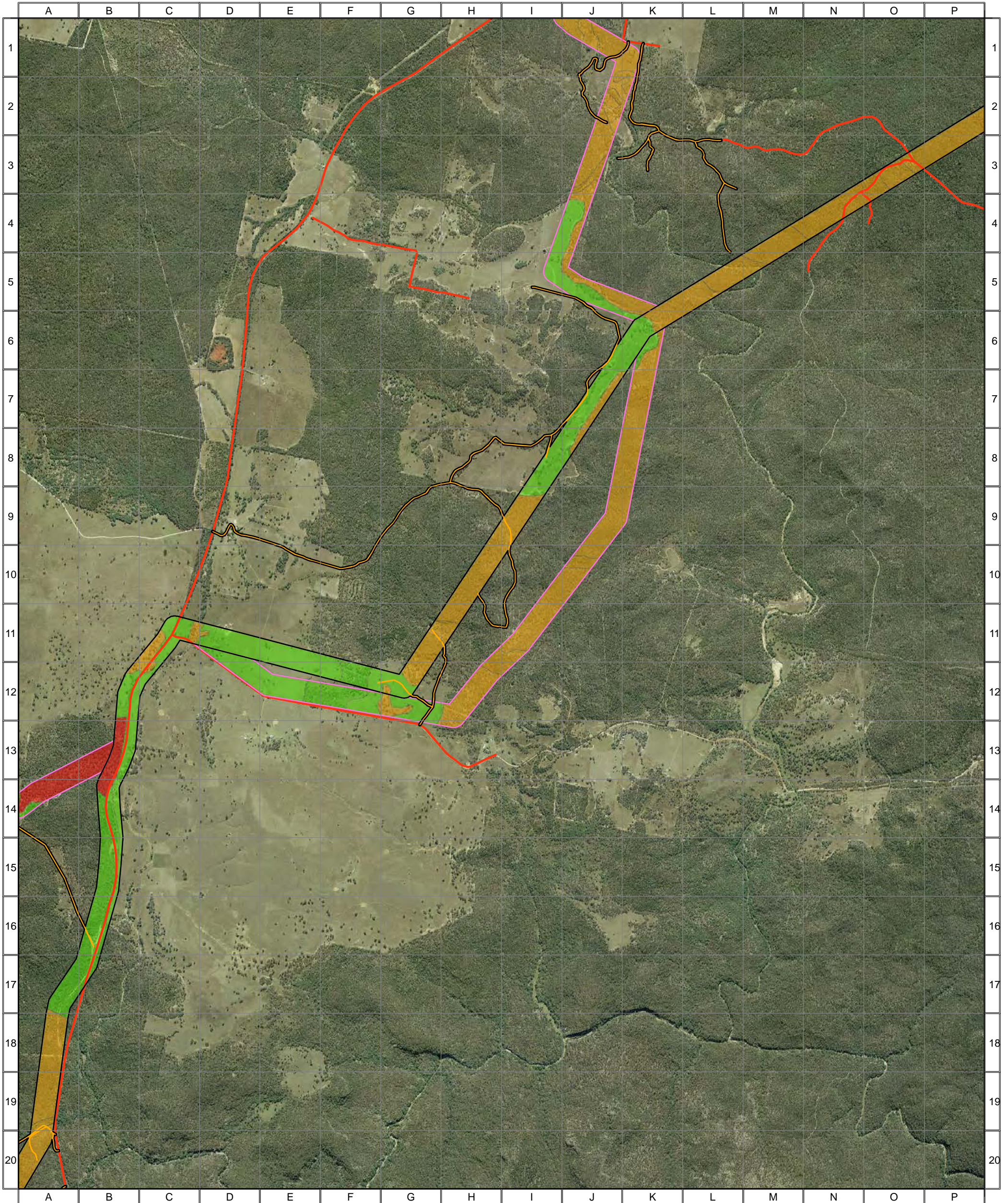
0 0.25 0.5 1 1.5 Kilometres

Approx. Scale @ A3 1:32500
 Ref: 4777 - Liverpool Range Wind Farm
 Produced by: Tom Hamilton
 Date: 15 November 2013
 Projection: GDA94 MGA Zone 55



*Based on Infrastructure datasets provided by Epuron (2011-2013)
 Aerial Photography provided by Epuron (Aug. 2011)
 (C) Copyright Commonwealth of Australia (Geoscience Australia) 2008*

4777 - Liverpool Range (TL Study Area, Map 3) - Combined Flora and Fauna Constraints



Combined Constraints

- High
- Moderate
- Low

- Combined Survey Area (Preferred Infrastructure Layout)
- Combined Survey Area (Alternative Infrastructure Layout)

- Indicative Turbine Locations
- Substations
- Overhead Powerlines
- Underground Powerlines
- Proposed Tracks
- Existing Roads
- Wind Farm Site Boundary



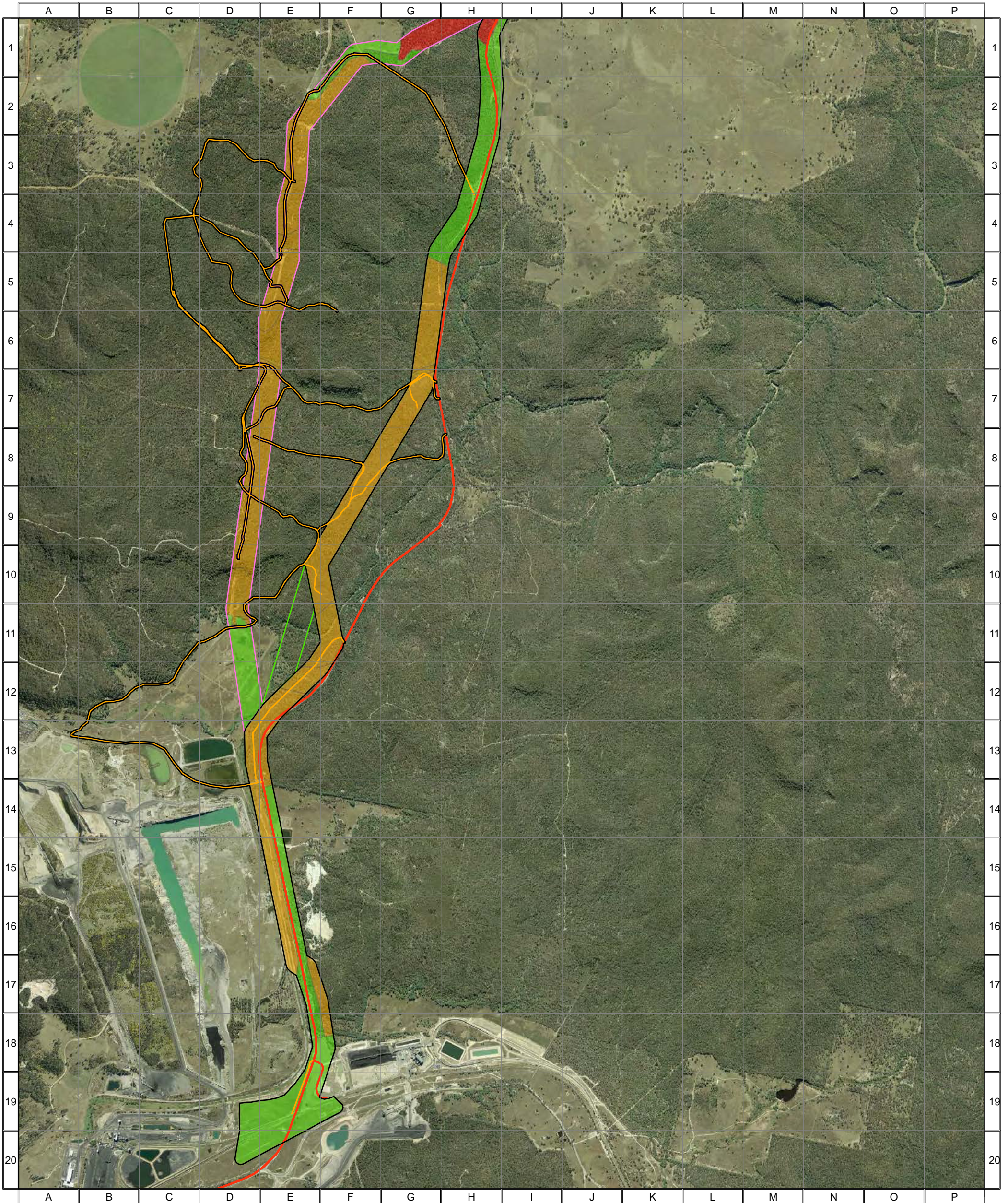
0 0.25 0.5 1 1.5 Kilometres

Approx. Scale @ A3 1:32500
 Ref: 4777 - Liverpool Range Wind Farm
 Produced by: Tom Hamilton
 Date: 15 November 2013
 Projection: GDA94 MGA Zone 55



*Based on Infrastructure datasets provided by Epuron (2011-2013)
 Aerial Photography provided by Epuron (Aug. 2011)
 (C) Copyright Commonwealth of Australia (Geoscience Australia) 2008*

4777 - Liverpool Range (TL Study Area, Map 4) - Combined Flora and Fauna Constraints



Combined Constraints

- High
- Moderate
- Low

- Combined Survey Area (Preferred Infrastructure Layout)
- Proposed deviation for Square-tailed Kite nest buffer
- Combined Survey Area (Alternative Infrastructure Layout)

- Indicative Turbine Locations
- Substations
- ++ Overhead Powerlines
- Underground Powerlines
- Proposed Tracks
- Existing Roads
- Wind Farm Site Boundary



0 0.25 0.5 1 1.5 Kilometres

Approx. Scale @ A3 1:32500
 Ref: 4777 - Liverpool Range Wind Farm
 Produced by: Tom Hamilton
 Date: 15 November 2013
 Projection: GDA94 MGA Zone 55



Based on Infrastructure datasets provided by Epuron (2011-2013)
 Aerial Photography provided by Epuron (Aug. 2011)
 (C) Copyright Commonwealth of Australia (Geoscience Australia) 2008