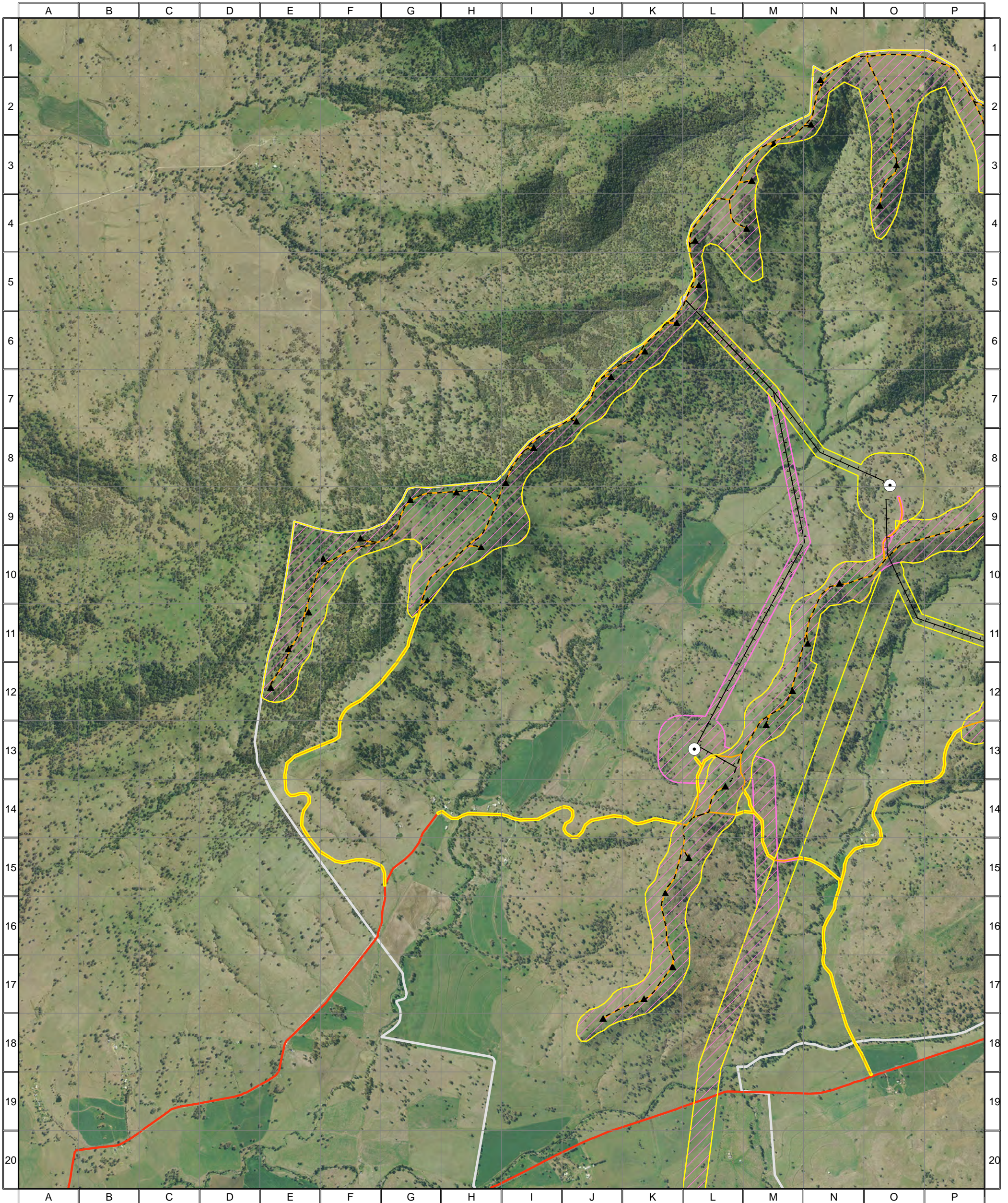



4777 - Liverpool Range (WF Study Area, Map 1) - Proposed Development Layout

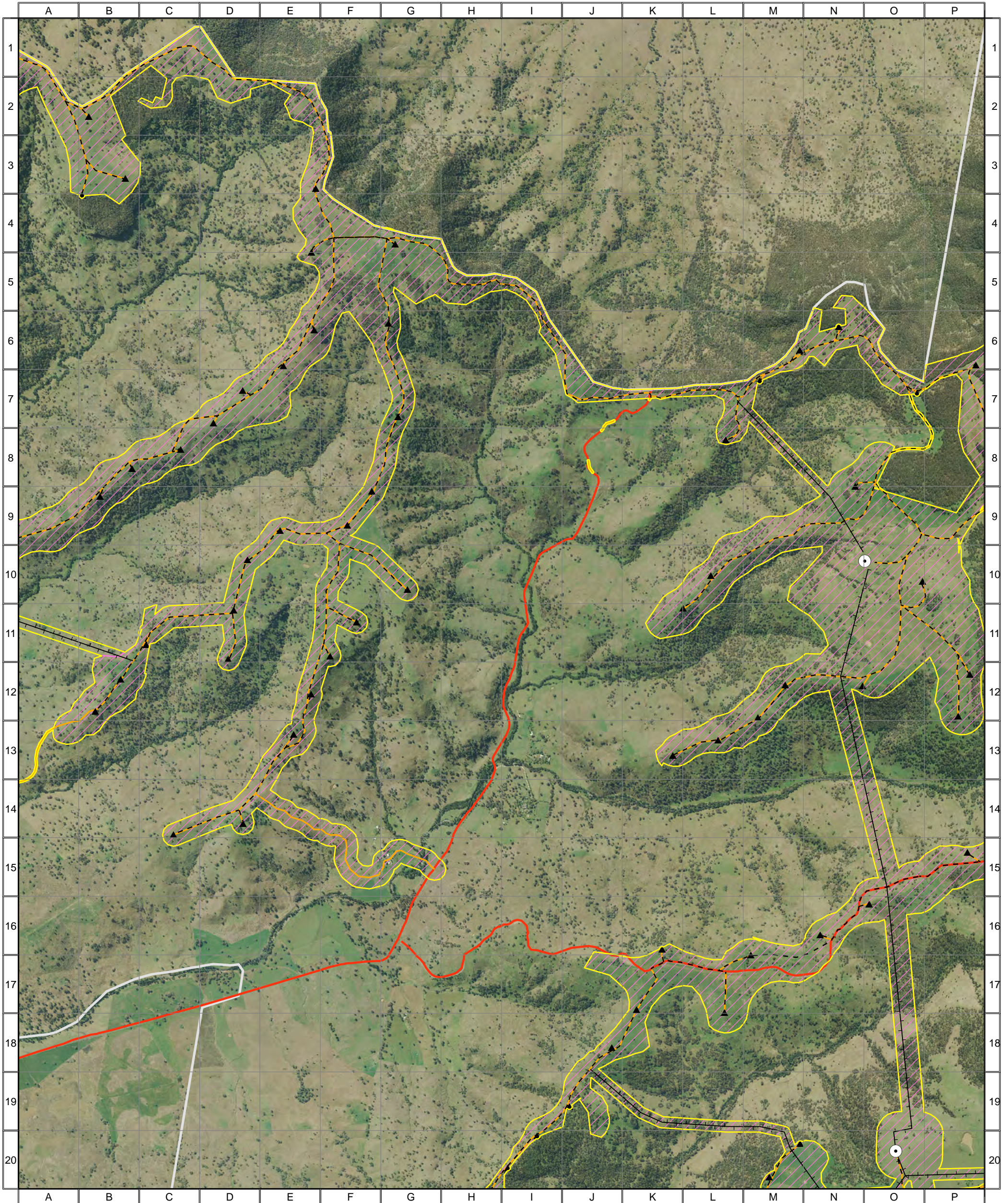


- Combined Survey Area (Preferred Infrastructure Layout)
- Combined Survey Area (Alternative Infrastructure Layout)
- Indicative Turbine Locations
- Substations
- Overhead Powerlines
- Underground Powerlines
- Proposed Tracks
- Existing Roads
- Wind Farm Site Boundary


 0 0.25 0.5 1 1.5 Kilometres
 Approx. Scale @ A3 1:32500
 Ref: 4777 - Liverpool Range Wind Farm
 Produced by: Tom Hamilton
 Date: 15 November 2013
 Projection: GDA94 MGA Zone 55
*Based on Infrastructure datasets provided by Epuron (2011-2013)
 Aerial Photography provided by Epuron (Aug. 2011)
 (C) Copyright Commonwealth of Australia (Geoscience Australia) 2008*



4777 - Liverpool Range (WF Study Area, Map 2) - Proposed Development Layout




- | | |
|--|--|
|  Combined Survey Area (Preferred Infrastructure Layout) |  Indicative Turbine Locations |
|  Combined Survey Area (Alternative Infrastructure Layout) |  Substations |
| |  Overhead Powerlines |
| |  Underground Powerlines |
| |  Proposed Tracks |
| |  Existing Roads |
| |  Wind Farm Site Boundary |

ngh environmental

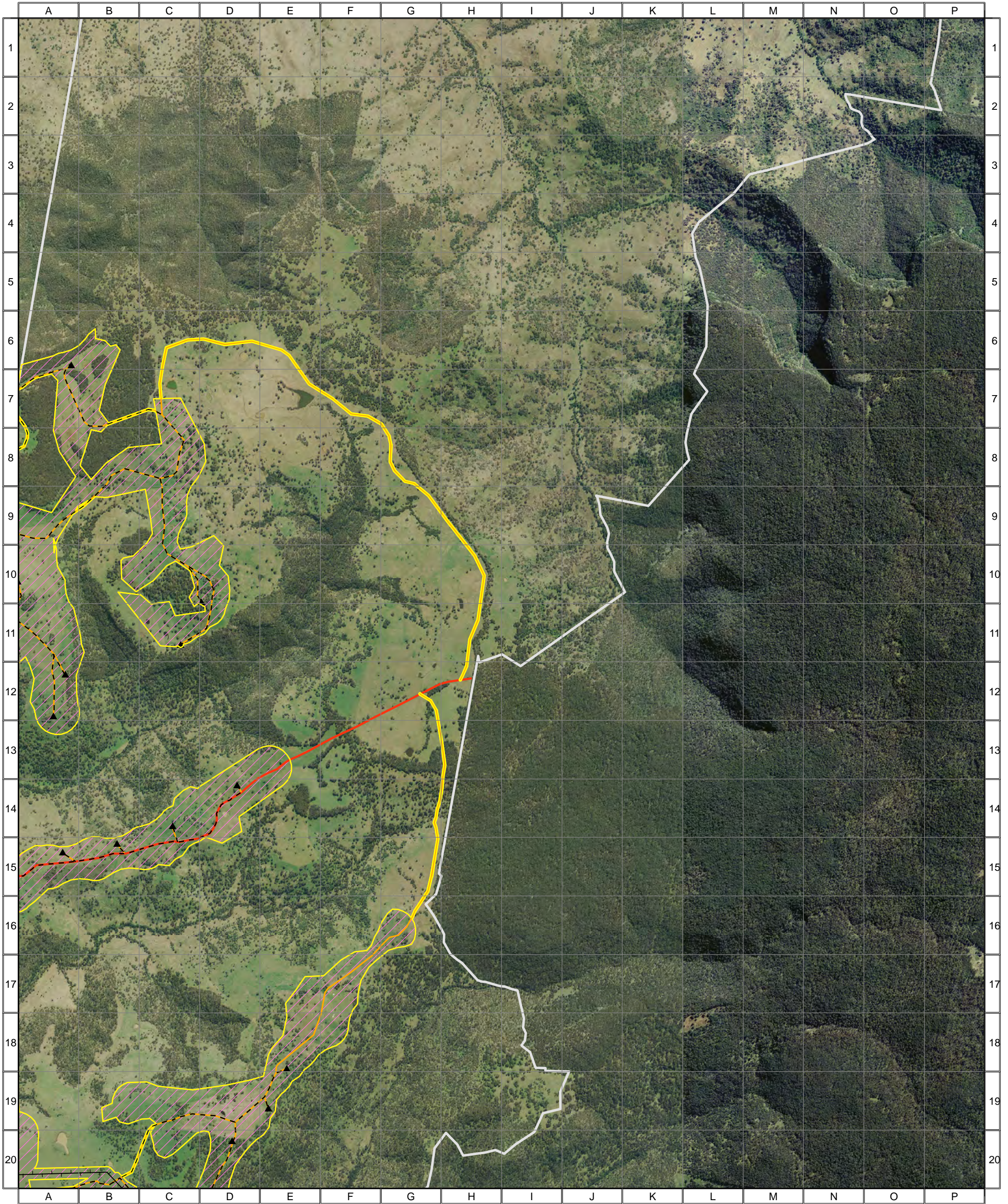
0 0.25 0.5 1 1.5 Kilometres





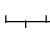
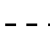



Approx. Scale @ A3 1:32500
 Ref: 4777 - Liverpool Range Wind Farm
 Produced by: Tom Hamilton
 Date: 15 November 2013
 Projection: GDA94 MGA Zone 55

*Based on Infrastructure datasets provided by Epuron (2011-2013)
 Aerial Photography provided by Epuron (Aug. 2011)
 (C) Copyright Commonwealth of Australia (Geoscience Australia) 2008*



4777 - Liverpool Range (WF Study Area, Map 3) - Proposed Development Layout




- | | |
|--|--|
|  Combined Survey Area (Preferred Infrastructure Layout) |  Indicative Turbine Locations |
|  Combined Survey Area (Alternative Infrastructure Layout) |  Substations |
| |  Overhead Powerlines |
| |  Underground Powerlines |
| |  Proposed Tracks |
| |  Existing Roads |
| |  Wind Farm Site Boundary |

ngh environmental

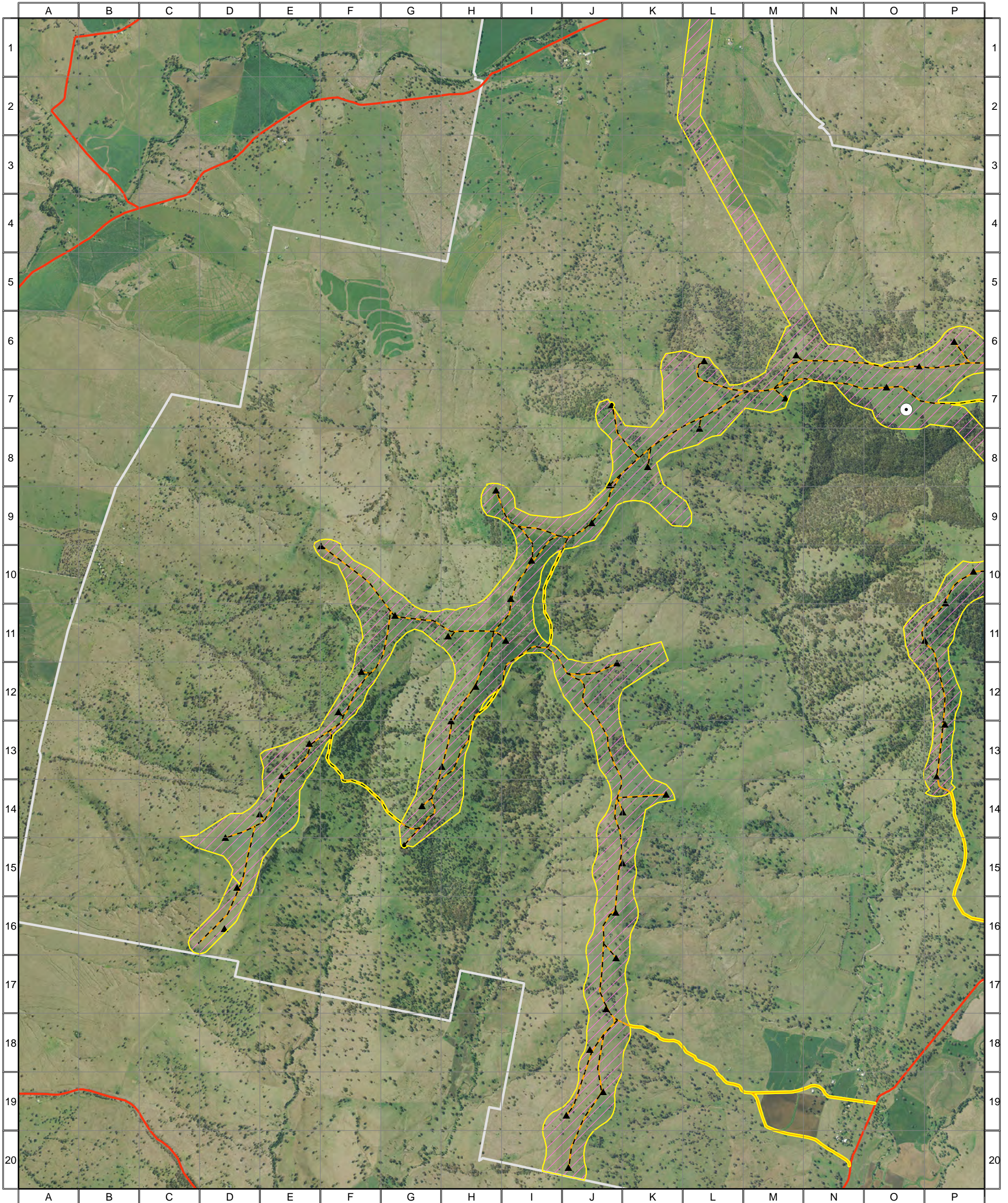
0 0.25 0.5 1 1.5 Kilometres

Approx. Scale @ A3 1:32500
 Ref: 4777 - Liverpool Range Wind Farm
 Produced by: Tom Hamilton
 Date: 15 November 2013
 Projection: GDA94 MGA Zone 55

*Based on Infrastructure datasets provided by Epuron (2011-2013)
 Aerial Photography provided by Epuron (Aug. 2011)
 (C) Copyright Commonwealth of Australia (Geoscience Australia) 2008*



4777 - Liverpool Range (WF Study Area, Map 4) - Proposed Development Layout




- | | |
|--|--|
|  Combined Survey Area (Preferred Infrastructure Layout) |  Indicative Turbine Locations |
|  Combined Survey Area (Alternative Infrastructure Layout) |  Substations |
| |  Overhead Powerlines |
| |  Underground Powerlines |
| |  Proposed Tracks |
| |  Existing Roads |
| |  Wind Farm Site Boundary |

ngh environmental

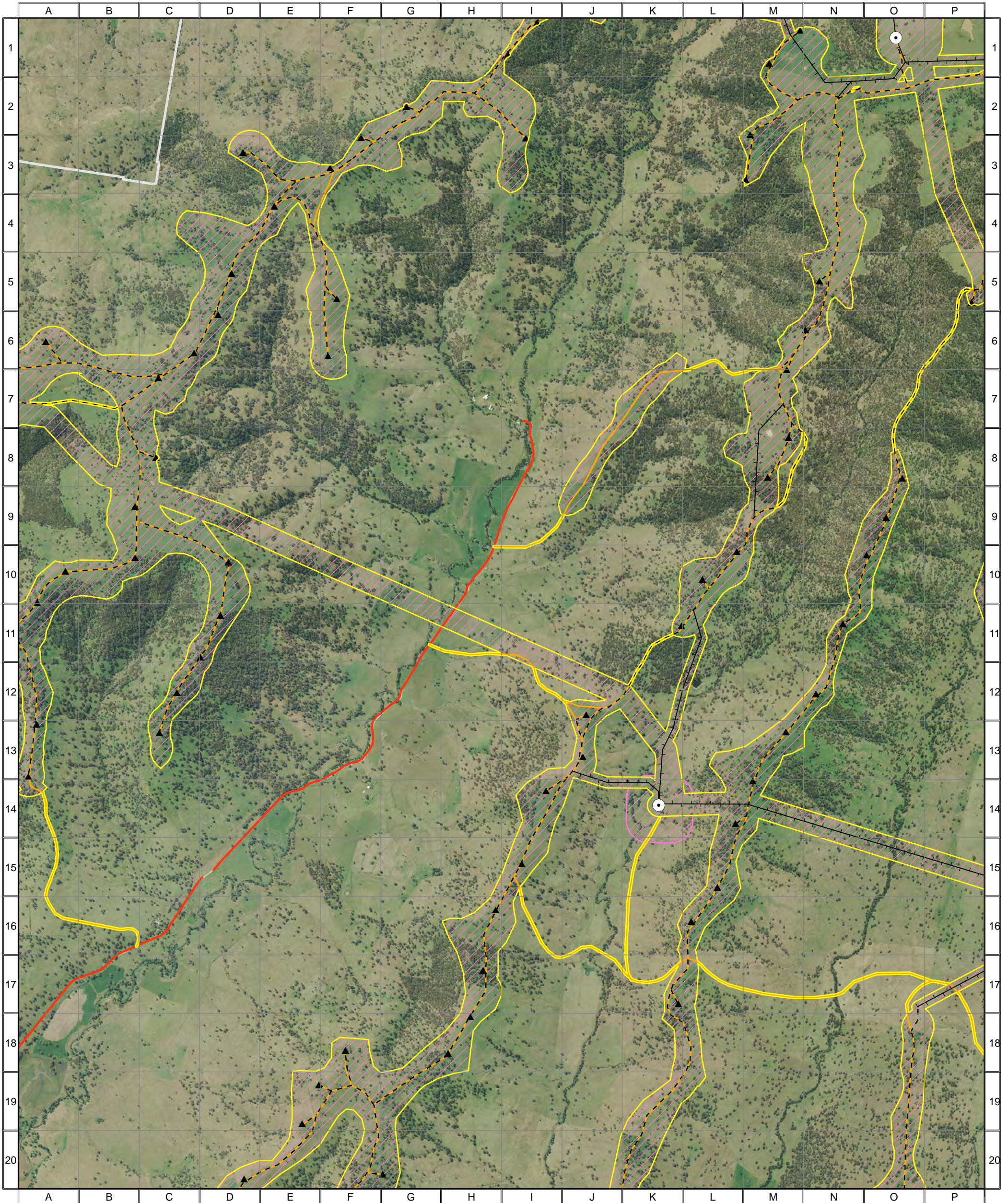
0 0.25 0.5 1 1.5 Kilometres





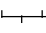
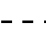



Approx. Scale @ A3 1:32500
 Ref: 4777 - Liverpool Range Wind Farm
 Produced by: Tom Hamilton
 Date: 15 November 2013
 Projection: GDA94 MGA Zone 55

*Based on Infrastructure datasets provided by Epuron (2011-2013)
 Aerial Photography provided by Epuron (Aug. 2011)
 (C) Copyright Commonwealth of Australia (Geoscience Australia) 2008*



4777 - Liverpool Range (WF Study Area, Map 5) - Proposed Development Layout



- | | |
|--|--|
|  Combined Survey Area (Preferred Infrastructure Layout) |  Indicative Turbine Locations |
|  Combined Survey Area (Alternative Infrastructure Layout) |  Substations |
| |  Overhead Powerlines |
| |  Underground Powerlines |
| |  Proposed Tracks |
| |  Existing Roads |
| |  Wind Farm Site Boundary |

ngh environmental

0 0.25 0.5 1 1.5 Kilometres

Approx. Scale @ A3 1:32500
 Ref: 4777 - Liverpool Range Wind Farm
 Produced by: Tom Hamilton
 Date: 15 November 2013
 Projection: GDA94 MGA Zone 55

*Based on Infrastructure datasets provided by Epuron (2011-2013)
 Aerial Photography provided by Epuron (Aug. 2011)
 (C) Copyright Commonwealth of Australia (Geoscience Australia) 2008*

