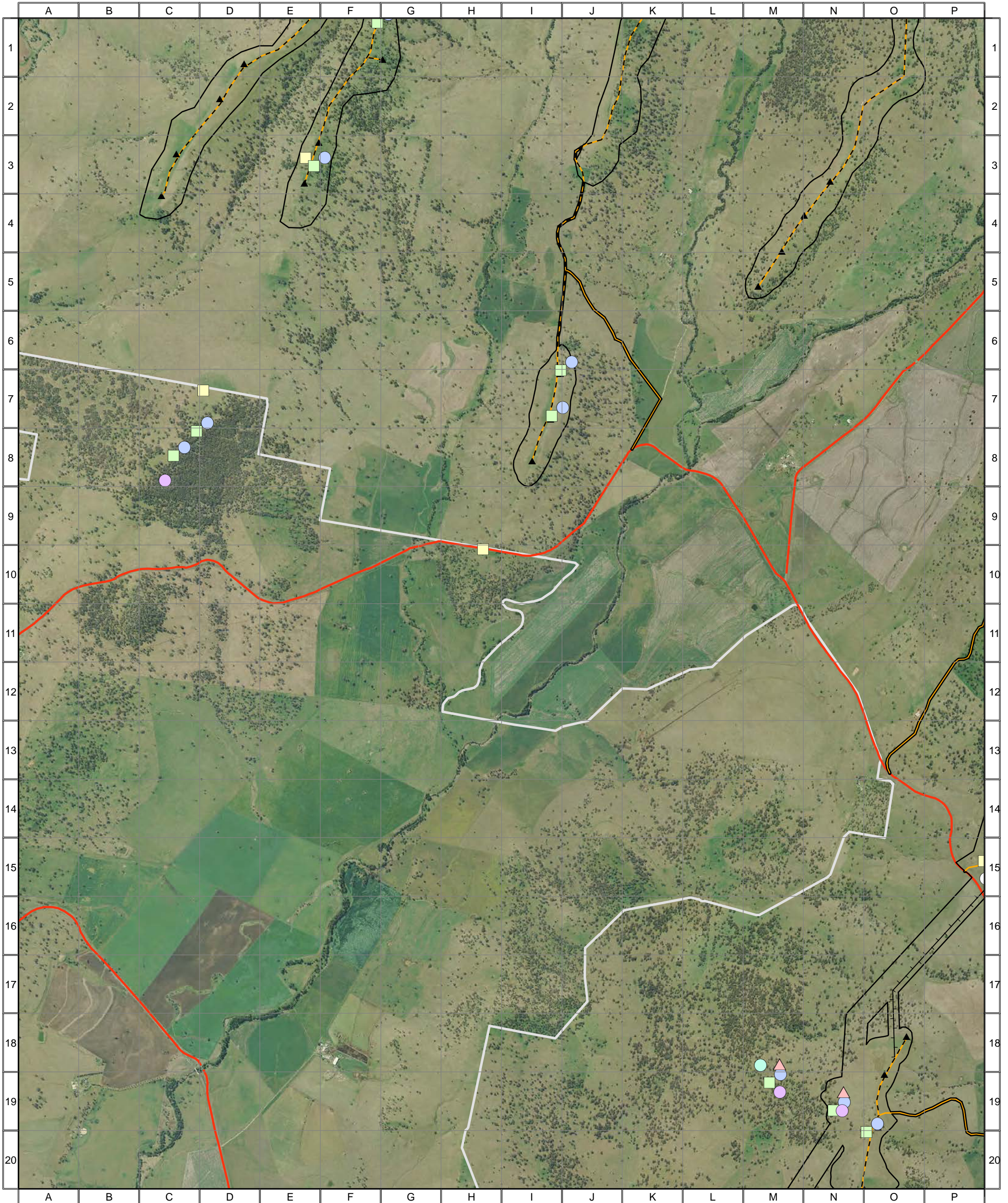
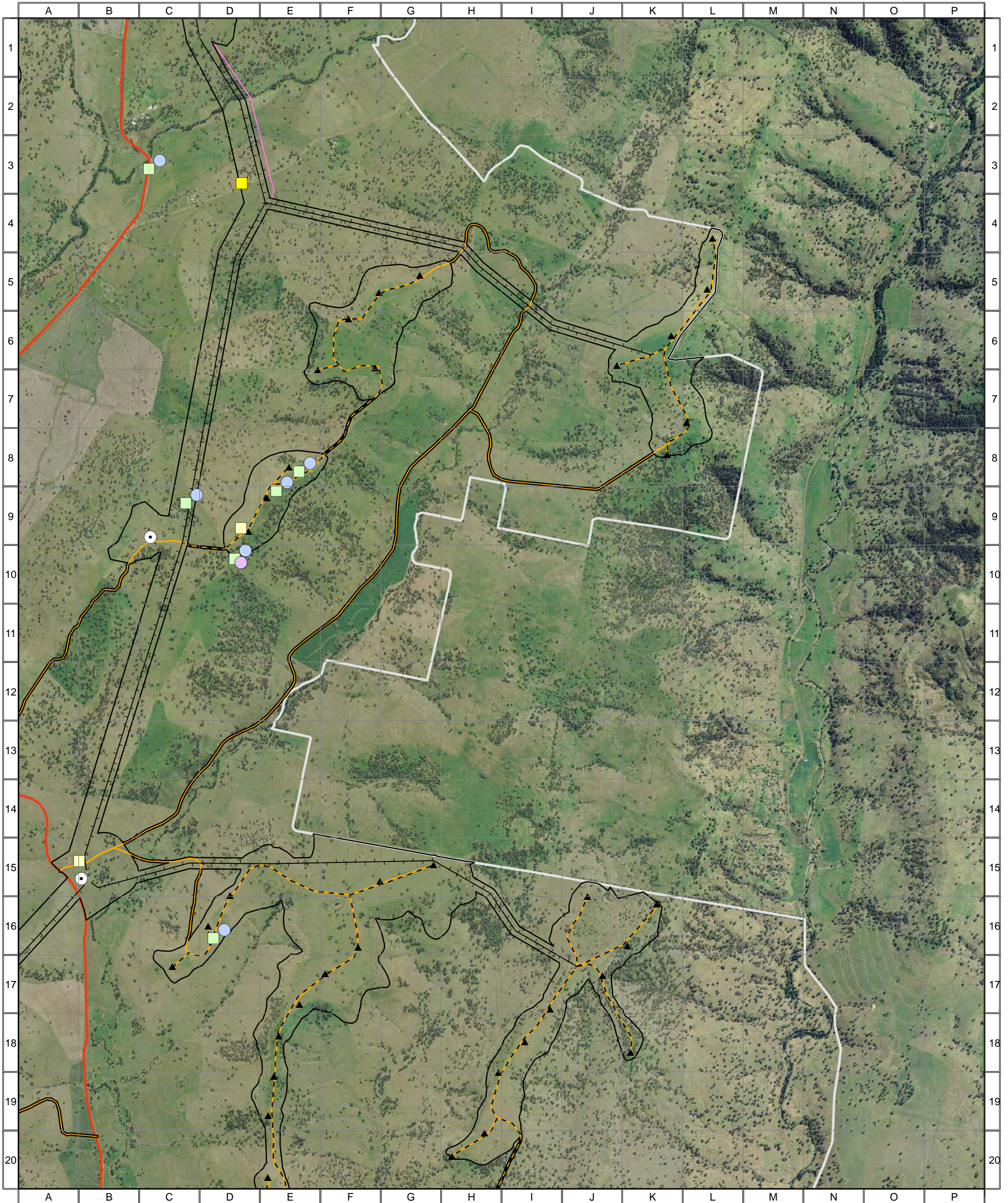



4777 - Liverpool Range (WF Study Area, Map 7) - Survey Effort



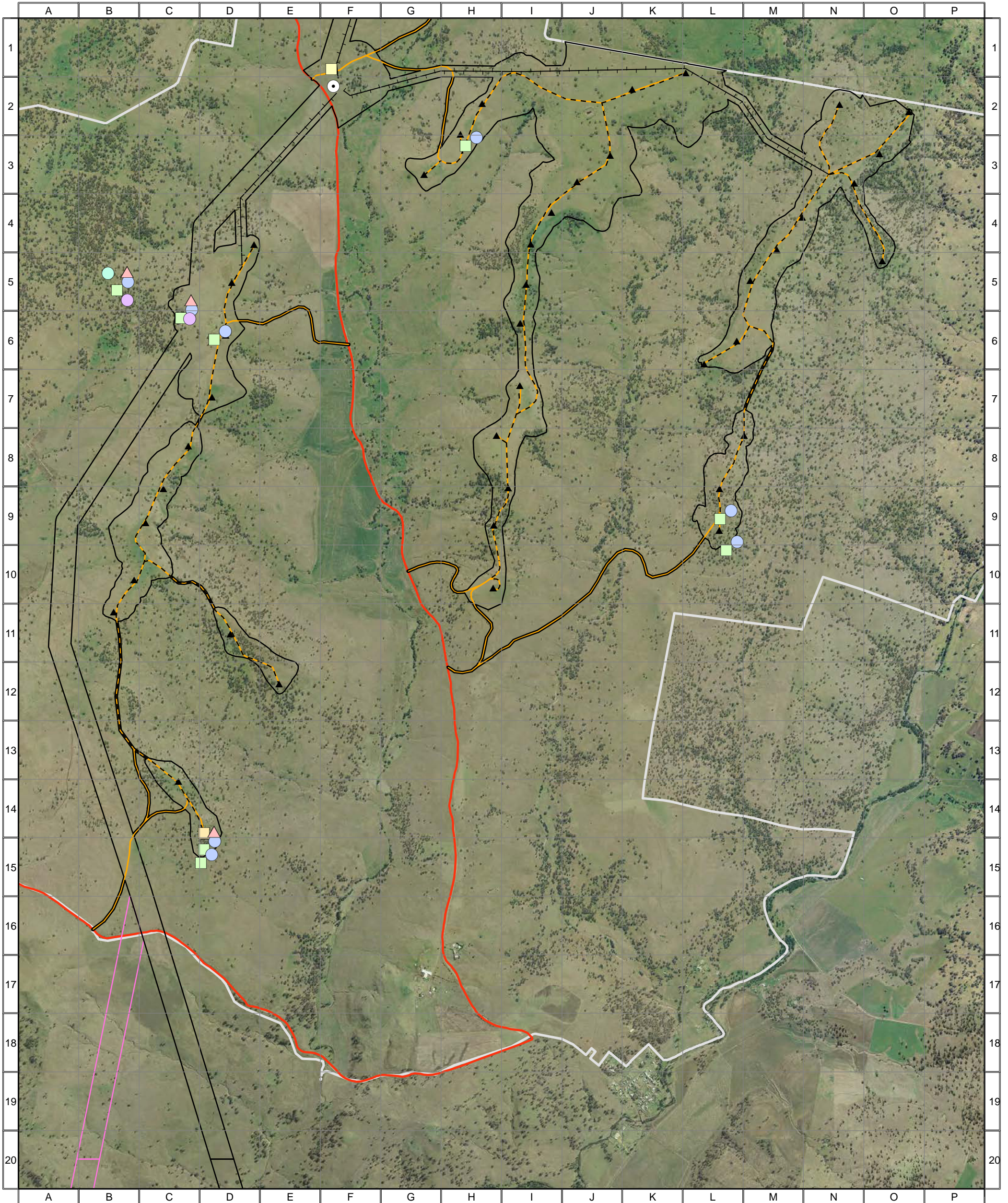
Survey Effort 2013 <ul style="list-style-type: none"> ▲ Dedicated Bird Survey ● Fauna Plot ● Nocturnal (Call Playback and Spotlighting) ● Anabat ● IR Camera Trap ■ Inspection Point ■ Dedicated Herp Search ■ Flora plot / Random Meander 		Survey Effort 2012 <ul style="list-style-type: none"> ▲ Dedicated Bird Survey ● Fauna Plot ● Nocturnal (Call Playback & Spotlighting) ● Anabat ■ Inspection Point ■ Dedicated Herp Search ■ Flora plot / Random Meander 		<ul style="list-style-type: none"> Combined Survey Area (Preferred Infrastructure Layout) ▲ Indicative Turbine Locations Substations —+— Overhead Powerlines - - - Underground Powerlines Proposed Tracks Existing Roads Wind Farm Site Boundary 		 <p>0 0.25 0.5 1 1.5 Kilometres</p> <p>Approx. Scale @ A3 1:32500 Ref: 4777 - Liverpool Range Wind Farm Produced by: Tom Hamilton Date: 15 November 2013 Projection: GDA94 MGA Zone 55</p> <p><small>Based on Infrastructure datasets provided by Epuron (2011-2013) Aerial Photography provided by Epuron (Aug. 2011) (C) Copyright Commonwealth of Australia (Geoscience Australia) 2008</small></p>	
---	--	--	--	---	--	---	--

4777 - Liverpool Range (WF Study Area, Map 8) - Survey Effort



Survey Effort 2013 <ul style="list-style-type: none"> ▲ Dedicated Bird Survey ● Fauna Plot ● Nocturnal (Call Playback and Spotlighting) ● Anabat ● IR Camera Trap ■ Inspection Point ■ Dedicated Herp Search ■ Flora plot / Random Meander 		Survey Effort 2012 <ul style="list-style-type: none"> ▲ Dedicated Bird Survey ● Fauna Plot ● Nocturnal (Call Playback & Spotlighting) ● Anabat ■ Inspection Point ■ Dedicated Herp Search ■ Flora plot / Random Meander 		<ul style="list-style-type: none"> Combined Survey Area (Preferred Infrastructure Layout) Combined Survey Area (Alternative Infrastructure Layout) ▲ Indicative Turbine Locations Substations Overhead Powerlines Underground Powerlines Proposed Tracks Existing Roads Wind Farm Site Boundary 		 <p>0 0.25 0.5 1 1.5 Kilometres</p> <p>Approx. Scale @ A3 1:32500 Ref: 4777 - Liverpool Range Wind Farm Produced by: Tom Hamilton Date: 15 November 2013 Projection: GDA94 MGA Zone 55</p> <p><i>Based on Infrastructure datasets provided by Epuron (2011-2013) Aerial Photography provided by Epuron (Aug. 2011) (C) Copyright Commonwealth of Australia (Geoscience Australia) 2008</i></p>	
--	--	---	--	--	--	--	--

4777 - Liverpool Range (WF Study Area, Map 9) - Survey Effort



Survey Effort 2013

- ▲ Dedicated Bird Survey
- Fauna Plot
- Nocturnal (Call Playback and Spotlighting)
- Anabat
- IR Camera Trap
- Inspection Point
- Dedicated Herp Search
- Flora plot / Random Meander

Survey Effort 2012

- ▲ Dedicated Bird Survey
- Fauna Plot
- Nocturnal (Call Playback & Spotlighting)
- Anabat
- Inspection Point
- Dedicated Herp Search
- Flora plot / Random Meander

- Combined Survey Area (Preferred Infrastructure Layout)
- Combined Survey Area (Alternative Infrastructure Layout)

- ▲ Indicative Turbine Locations
- Substations
- Overhead Powerlines
- Underground Powerlines
- Proposed Tracks
- Existing Roads
- Wind Farm Site Boundary



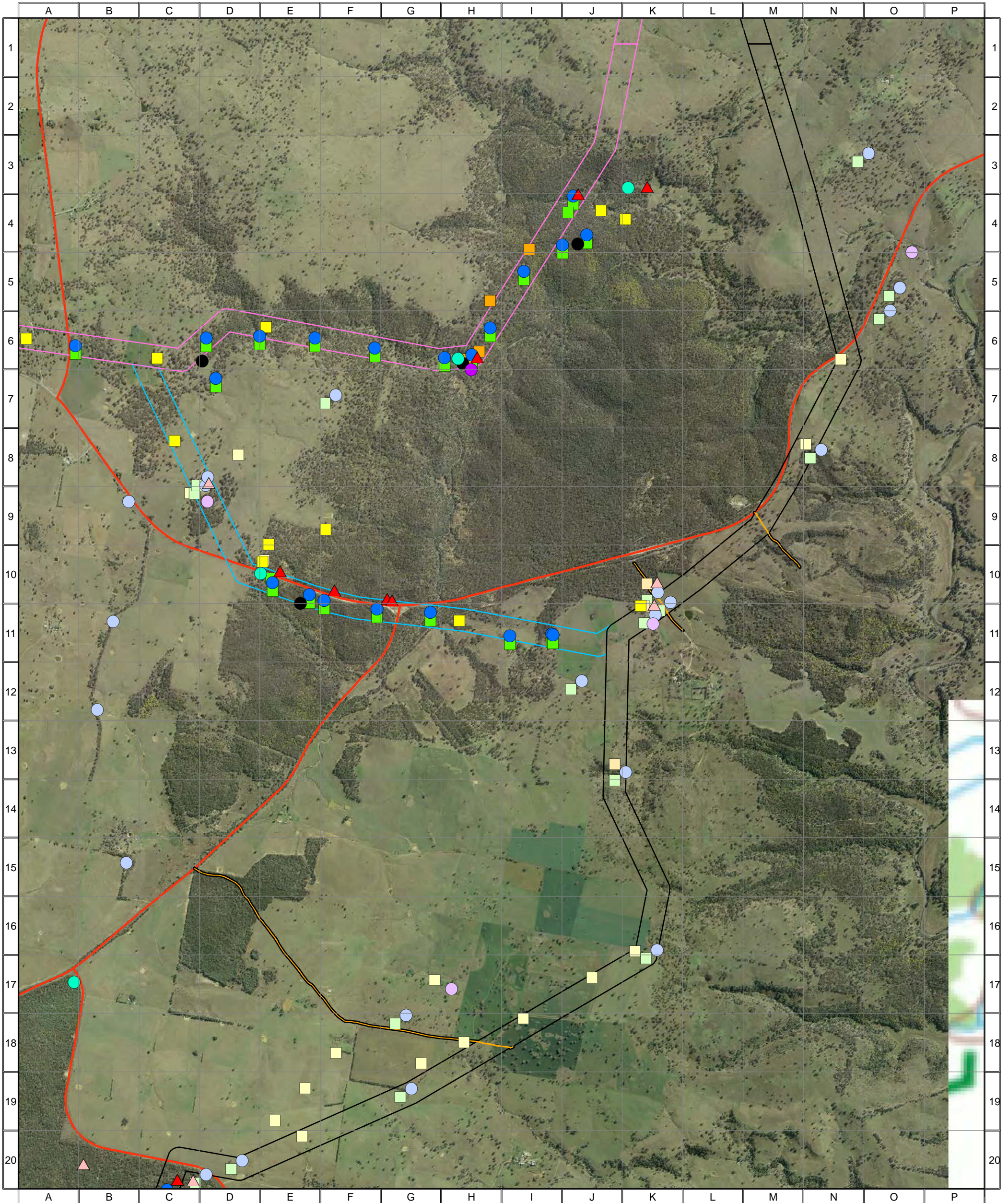
0 0.25 0.5 1 1.5 Kilometres


Approx. Scale @ A3 1:32500
 Ref: 4777 - Liverpool Range Wind Farm
 Produced by: Tom Hamilton
 Date: 15 November 2013
 Projection: GDA94 MGA Zone 55



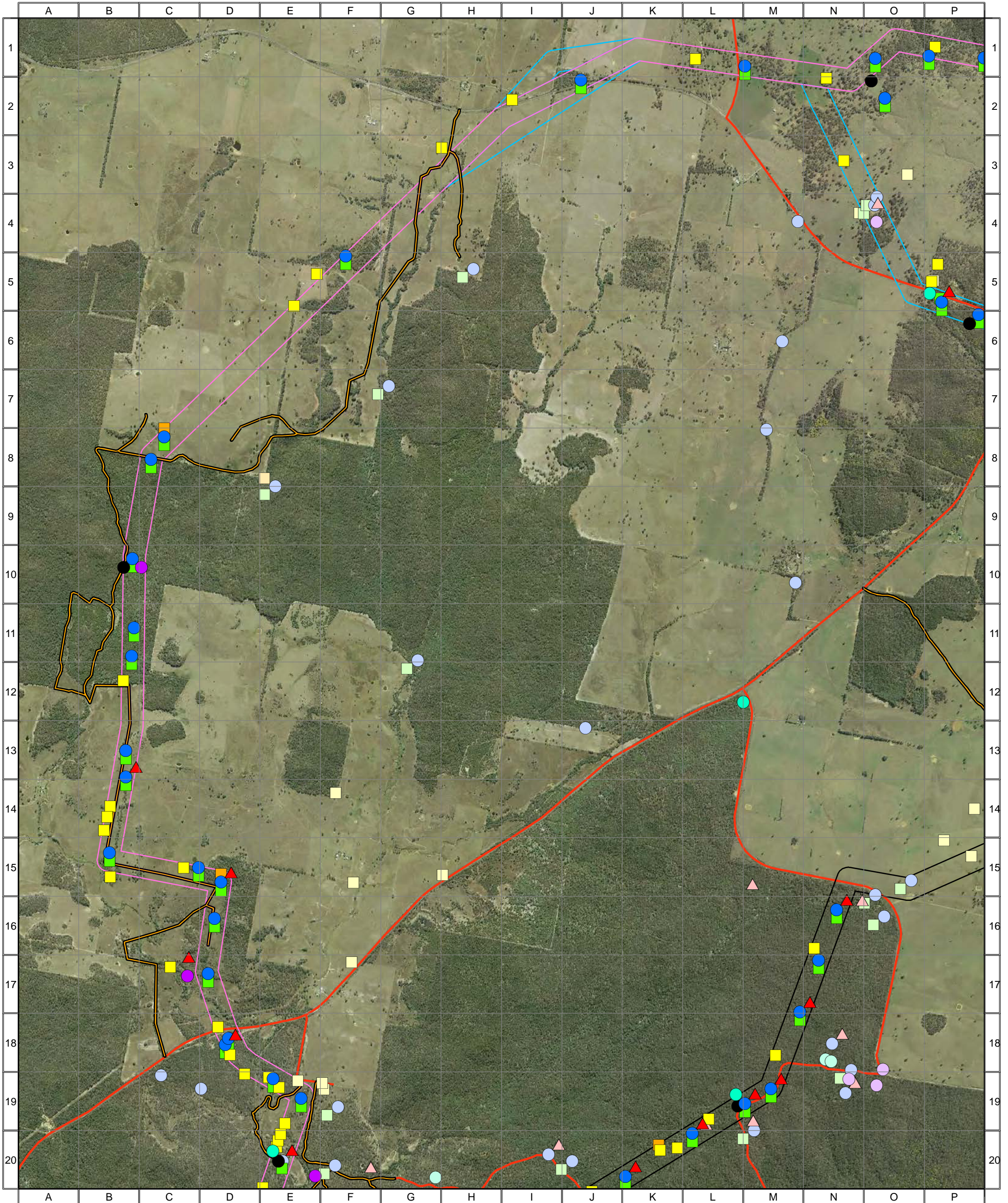
*Based on Infrastructure datasets provided by Epuron (2011-2013)
 Aerial Photography provided by Epuron (Aug. 2011)
 (C) Copyright Commonwealth of Australia (Geoscience Australia) 2008*


4777 - Liverpool Range (TL Study Area, Map 1) - Survey Effort



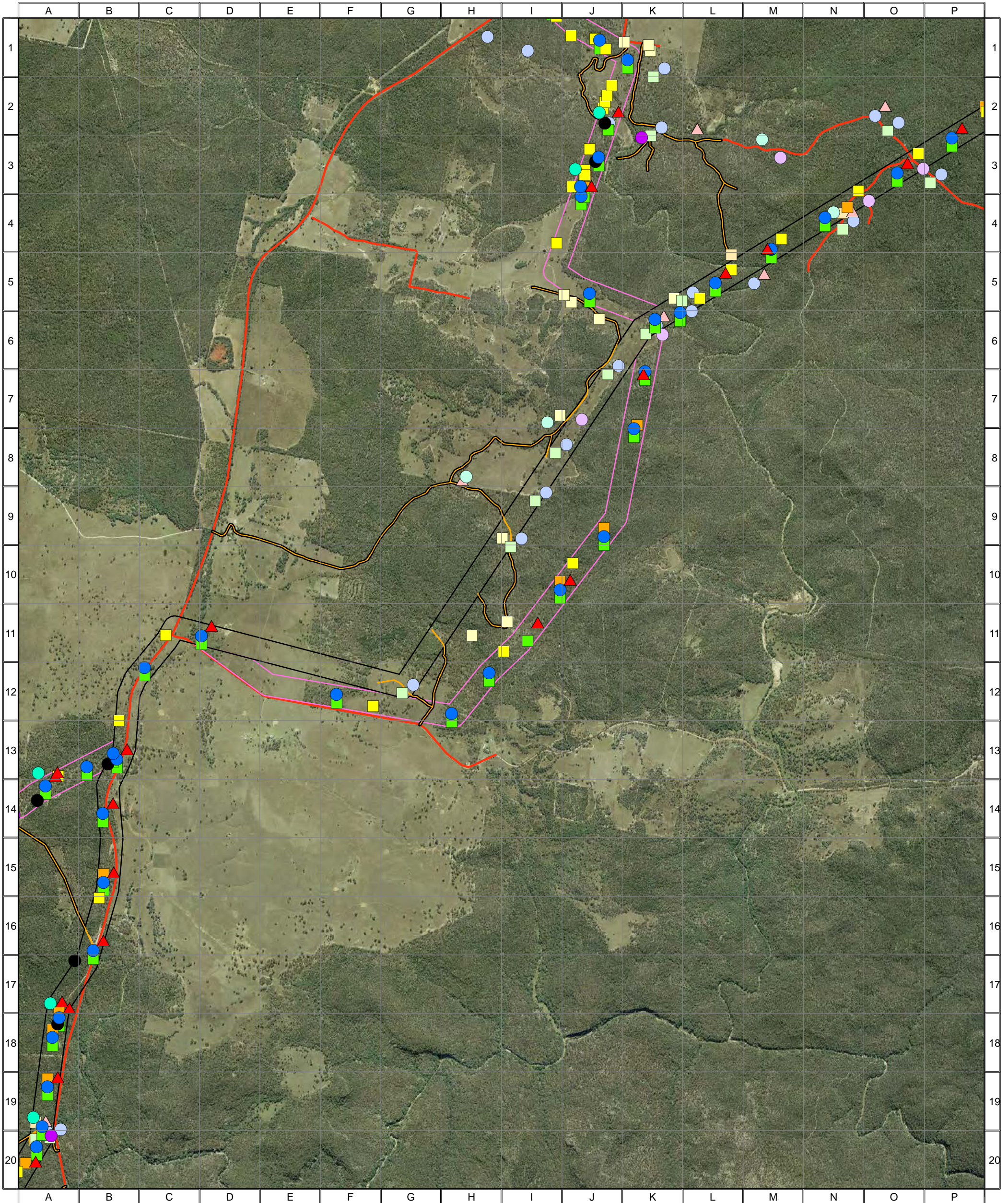
Survey Effort 2013 <ul style="list-style-type: none"> ▲ Dedicated Bird Survey ● Fauna Plot ● Nocturnal (Call Playback and Spotlighting) ● Anabat ● IR Camera Trap ■ Inspection Point ■ Dedicated Herp Search ■ Flora plot / Random Meander 		Survey Effort 2012 <ul style="list-style-type: none"> ▲ Dedicated Bird Survey ● Fauna Plot ● Nocturnal (Call Playback & Spotlighting) ● Anabat ■ Inspection Point ■ Dedicated Herp Search ■ Flora plot / Random Meander 		<ul style="list-style-type: none"> Combined Survey Area (Preferred Infrastructure Layout) Combined Survey Area (Alternative Infrastructure Layout) Combined Survey Area (2nd Alternative Infrastructure Layout) ▲ Indicative Turbine Locations Substations —+— Overhead Powerlines - - - Underground Powerlines — Proposed Tracks — Existing Roads Wind Farm Site Boundary 		 <p>0 0.25 0.5 1 1.5 Kilometres</p> <p>Approx. Scale @ A3 1:32500 Ref: 4777 - Liverpool Range Wind Farm Produced by: Tom Hamilton Date: 15 November 2013 Projection: GDA94 MGA Zone 55</p> <p><small>Based on Infrastructure datasets provided by Epuron (2011-2013) Aerial Photography provided by Epuron (Aug. 2011) (C) Copyright Commonwealth of Australia (Geoscience Australia) 2008</small></p>	
---	--	--	--	---	--	--	--

4777 - Liverpool Range (TL Study Area, Map 2) - Survey Effort



Survey Effort 2013 <ul style="list-style-type: none"> ▲ Dedicated Bird Survey ● Fauna Plot ● Nocturnal (Call Playback and Spotlighting) ● Anabat ● IR Camera Trap ■ Inspection Point ■ Dedicated Herp Search ■ Flora plot / Random Meander 		Survey Effort 2012 <ul style="list-style-type: none"> ▲ Dedicated Bird Survey ● Fauna Plot ● Nocturnal (Call Playback & Spotlighting) ● Anabat ■ Inspection Point ■ Dedicated Herp Search ■ Flora plot / Random Meander 		<ul style="list-style-type: none"> Combined Survey Area (Preferred Infrastructure Layout) Combined Survey Area (Alternative Infrastructure Layout) Combined Survey Area (2nd Alternative Infrastructure Layout) ▲ Indicative Turbine Locations ● Substations —+— Overhead Powerlines - - - Underground Powerlines — Proposed Tracks — Existing Roads Wind Farm Site Boundary 		 <p>0 0.25 0.5 1 1.5 Kilometres</p> <p>Approx. Scale @ A3 1:32500 Ref: 4777 - Liverpool Range Wind Farm Produced by: Tom Hamilton Date: 15 November 2013 Projection: GDA94 MGA Zone 55</p> <p><small>Based on Infrastructure datasets provided by Epuron (2011-2013) Aerial Photography provided by Epuron (Aug. 2011) (C) Copyright Commonwealth of Australia (Geoscience Australia) 2008</small></p>	
--	--	--	--	--	--	--	--

4777 - Liverpool Range (TL Study Area, Map 3) - Survey Effort



Survey Effort 2013

- ▲ Dedicated Bird Survey
- Fauna Plot
- Nocturnal (Call Playback and Spotlighting)
- Anabat
- IR Camera Trap
- Inspection Point
- Dedicated Herp Search
- Flora plot / Random Meander

Survey Effort 2012

- ▲ Dedicated Bird Survey
- Fauna Plot
- Nocturnal (Call Playback & Spotlighting)
- Anabat
- Inspection Point
- Dedicated Herp Search
- Flora plot / Random Meander

- Combined Survey Area (Preferred Infrastructure Layout)
- Combined Survey Area (Alternative Infrastructure Layout)

- ▲ Indicative Turbine Locations
- Substations
- +— Overhead Powerlines
- - - Underground Powerlines
- Proposed Tracks
- Existing Roads
- Wind Farm Site Boundary



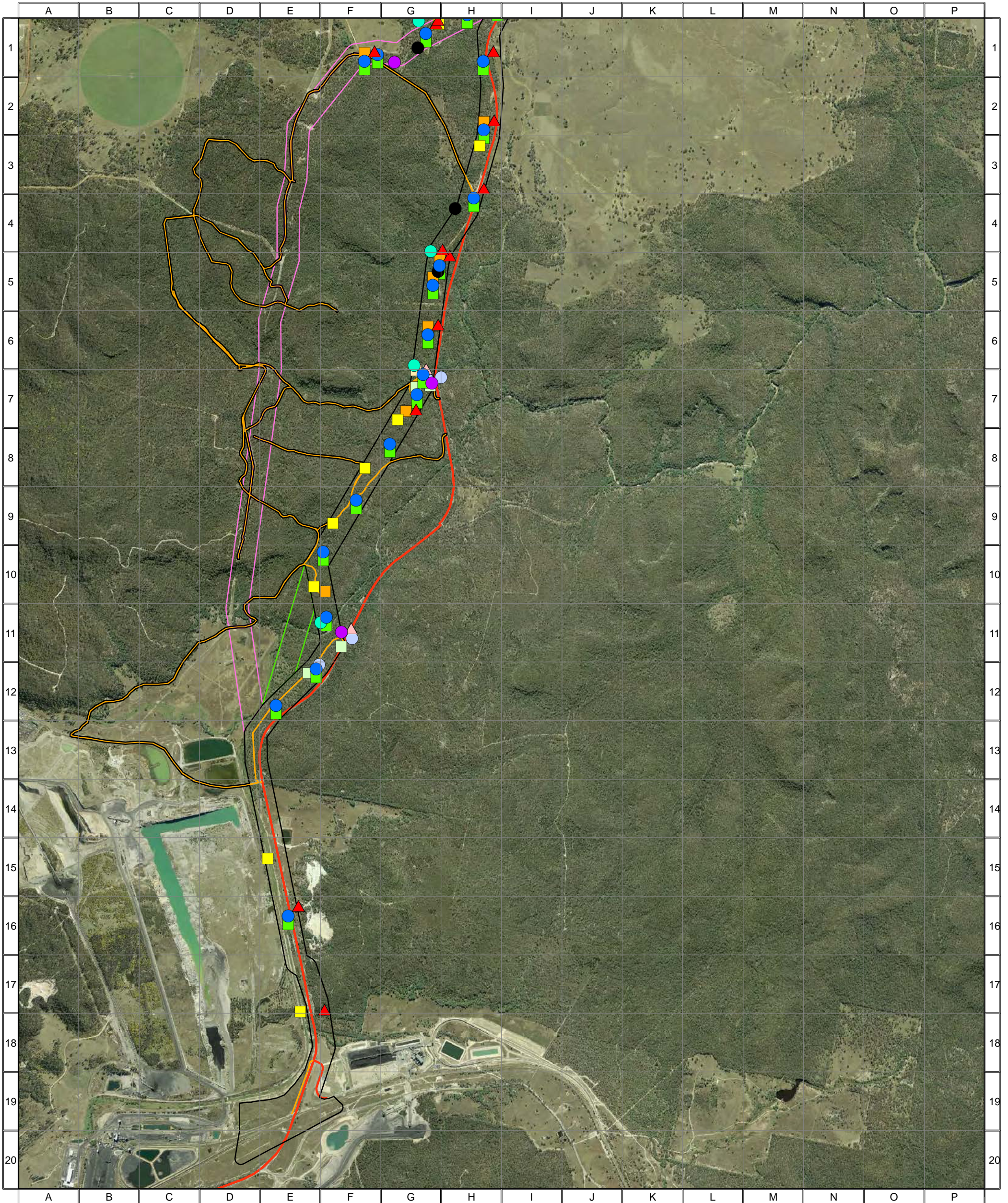
0 0.25 0.5 1 1.5 Kilometres

Approx. Scale @ A3 1:32500
 Ref: 4777 - Liverpool Range Wind Farm
 Produced by: Tom Hamilton
 Date: 15 November 2013
 Projection: GDA94 MGA Zone 55



*Based on Infrastructure datasets provided by Epuron (2011-2013)
 Aerial Photography provided by Epuron (Aug. 2011)
 (C) Copyright Commonwealth of Australia (Geoscience Australia) 2008*

4777 - Liverpool Range (TL Study Area, Map 4) - Survey Effort



Survey Effort 2013

- ▲ Dedicated Bird Survey
- Fauna Plot
- Nocturnal (Call Playback and Spotlighting)
- Anabat
- IR Camera Trap
- Inspection Point
- Dedicated Herp Search
- Flora plot / Random Meander

Survey Effort 2012

- ▲ Dedicated Bird Survey
- Fauna Plot
- Nocturnal (Call Playback & Spotlighting)
- Anabat
- Inspection Point
- Dedicated Herp Search
- Flora plot / Random Meander

- Combined Survey Area (Preferred Infrastructure Layout)
- Proposed deviation for Square-tailed Kite nest buffer
- Combined Survey Area (Alternative Infrastructure Layout)


- ▲ Indicative Turbine Locations
- Substations
- Overhead Powerlines
- Underground Powerlines
- Proposed Tracks
- Existing Roads
- Wind Farm Site Boundary

ngh environmental

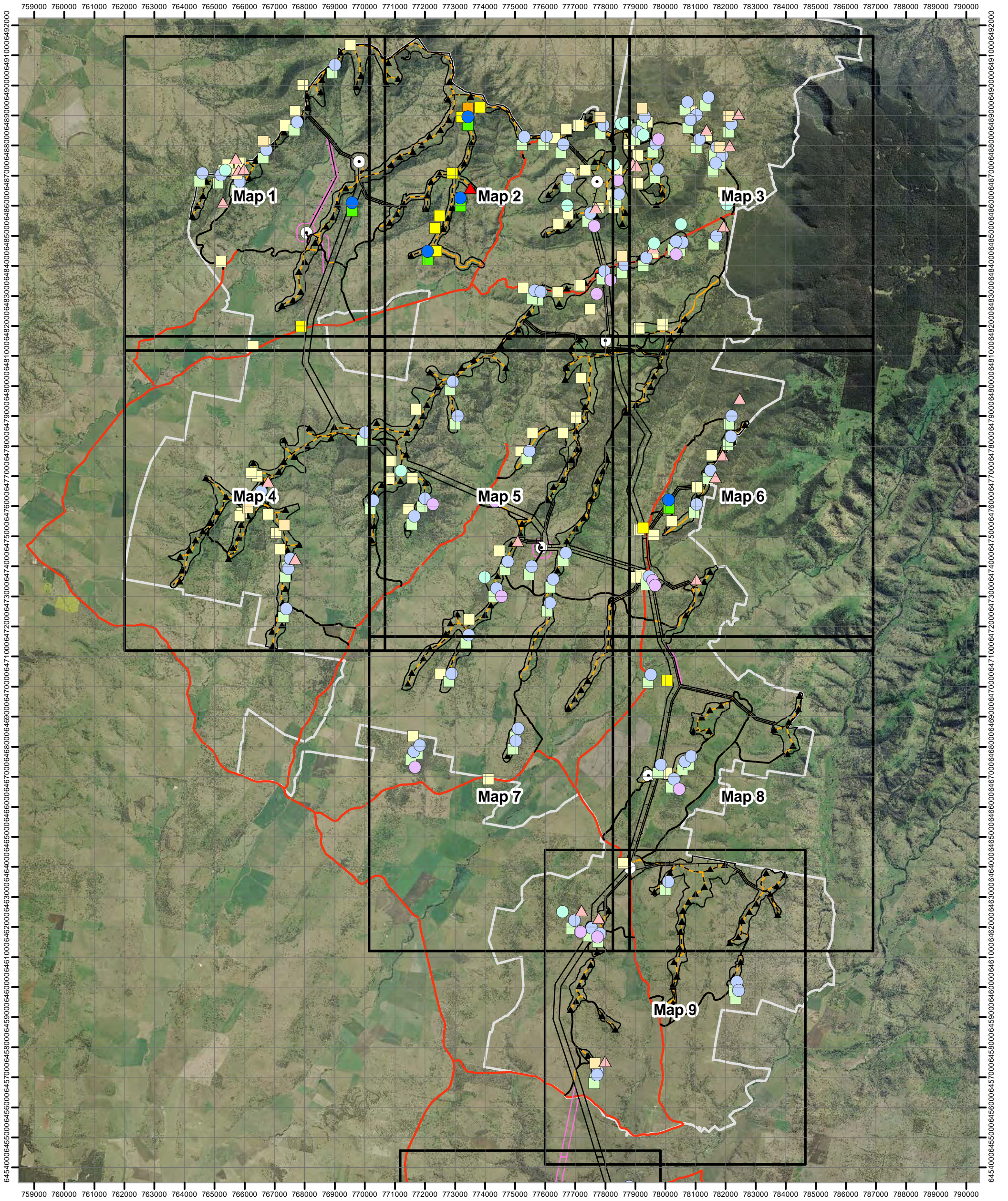
0 0.25 0.5 1 1.5 Kilometres

Approx. Scale @ A3 1:32500
 Ref: 4777 - Liverpool Range Wind Farm
 Produced by: Tom Hamilton
 Date: 15 November 2013
 Projection: GDA94 MGA Zone 55

*Based on Infrastructure datasets provided by Epuron (2011-2013)
 Aerial Photography provided by Epuron (Aug. 2011)
 (C) Copyright Commonwealth of Australia (Geoscience Australia) 2008*



4777 - Liverpool Range (WF Study Area) - Survey Effort



Survey Effort 2013

- ▲ Dedicated Bird Survey
- Fauna Plot
- Nocturnal (Call Playback and Spotlighting)
- Anabat
- IR Camera Trap
- Inspection Point
- Dedicated Herp Search
- Flora plot / Random Meander

Survey Effort 2012

- ▲ Dedicated Bird Survey
- Fauna Plot
- Nocturnal (Call Playback & Spotlighting)
- Anabat
- Inspection Point
- Dedicated Herp Search
- Flora plot / Random Meander

- ▭ Combined Survey Area (Preferred Infrastructure Layout)
- ▭ Combined Survey Area (Alternative Infrastructure Layout)

- ▲ Indicative Turbine Locations
- Substations
- Overhead Powerlines
- - - Underground Powerlines
- Proposed Tracks
- Existing Roads
- ▭ Wind Farm Site Boundary



0 0.5 1 2 3 4 5 Kilometres

Approx. Scale @ A3 1:120000

Ref: 4777 - Liverpool Range Wind Farm

Produced by: Tom Hamilton

Date: 15 November 2013

Projection: GDA94 MGA Zone 55

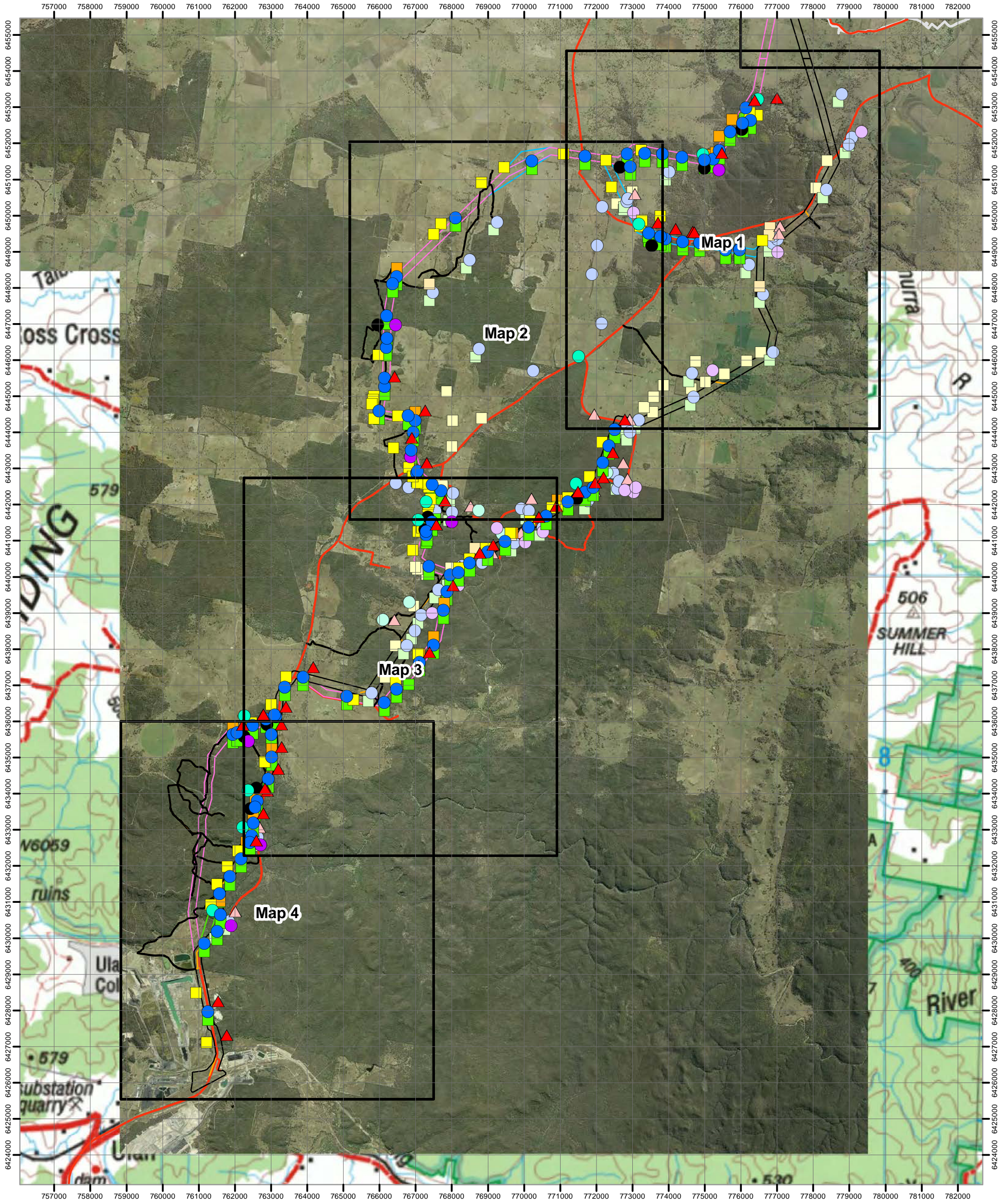
Based on Infrastructure datasets provided by Epuron (2011-2013)

Aerial Photography provided by Epuron (Aug. 2011)

(C) Copyright Commonwealth of Australia (Geoscience Australia) 2008



4777 - Liverpool Range (TL Study Area) - Survey Effort



Survey Effort 2013

- ▲ Dedicated Bird Survey
- Fauna Plot
- Nocturnal (Call Playback and Spotlighting)
- Anabat
- IR Camera Trap
- Inspection Point
- Dedicated Herp Search
- Flora plot / Random Meander

Survey Effort 2012

- ▲ Dedicated Bird Survey
- Fauna Plot
- Nocturnal (Call Playback & Spotlighting)
- Anabat
- Inspection Point
- Dedicated Herp Search
- Flora plot / Random Meander

- ▭ Combined Survey Area (Preferred Infrastructure Layout)
- ▭ Proposed deviation for Square-tailed Kite nest buffer
- ▭ Combined Survey Area (Alternative Infrastructure Layout)
- ▭ Combined Survey Area (2nd Alternative Infrastructure Layout)

- ▲ Indicative Turbine Locations
- Substations
- Overhead Powerlines
- - - Underground Powerlines
- Proposed Tracks
- Existing Roads
- ▭ Wind Farm Site Boundary



0 0.5 1 2 3 4 5 Kilometres

Approx. Scale @ A3 1:100000

Ref: 4777 - Liverpool Range Wind Farm

Produced by: Tom Hamilton

Date: 15 November 2013

Projection: GDA94 MGA Zone 55

Based on Infrastructure datasets provided by Epuron (2011-2013)

Aerial Photography provided by Epuron (Aug. 2011)

(C) Copyright Commonwealth of Australia (Geoscience Australia) 2008

