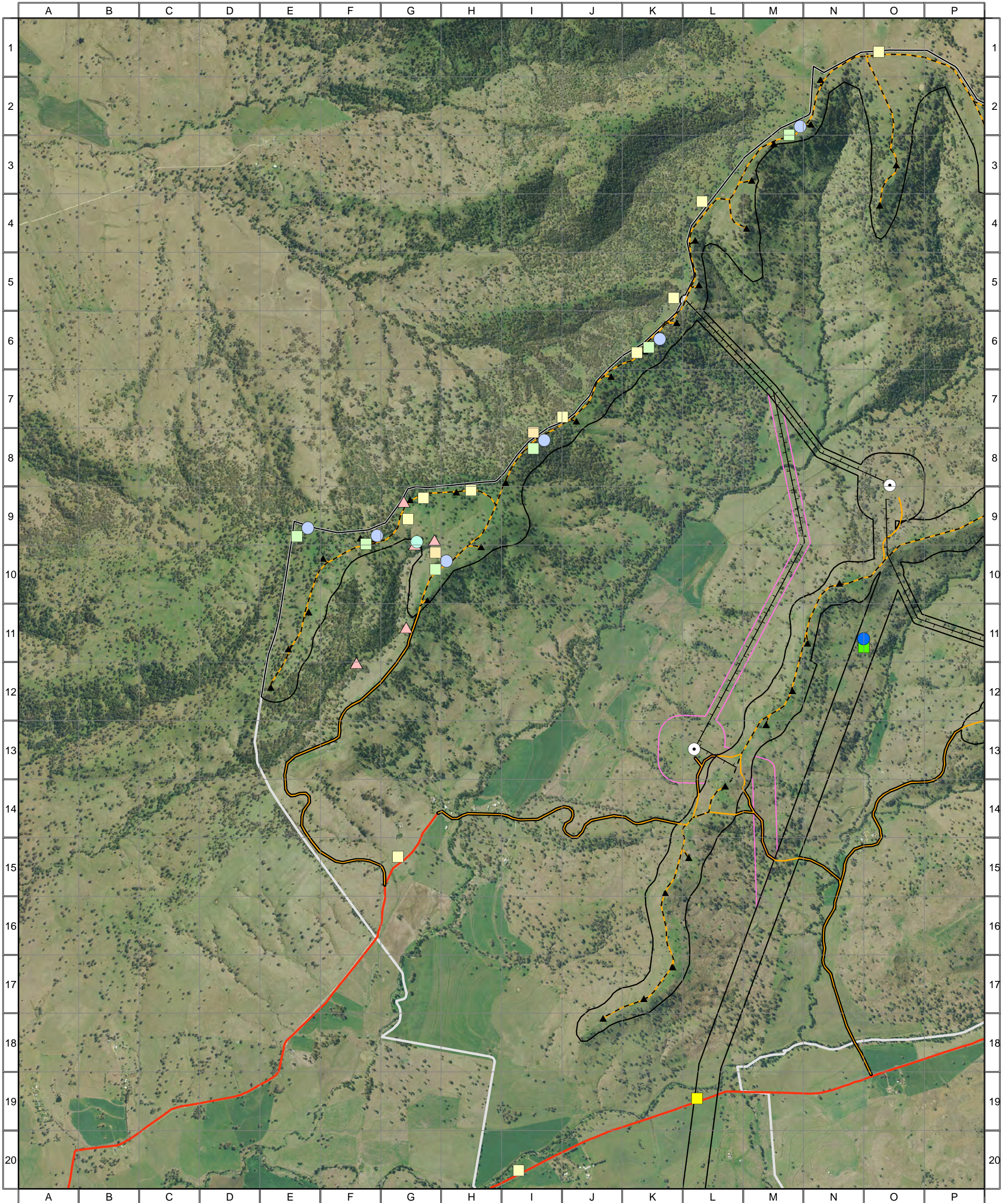


# 4777 - Liverpool Range (WF Study Area, Map 1) - Survey Effort



## Survey Effort 2013

- ▲ Dedicated Bird Survey
- Fauna Plot
- Nocturnal (Call Playback and Spotlighting)
- Anabat
- IR Camera Trap
- Inspection Point
- Dedicated Herp Search
- Flora plot / Random Meander

## Survey Effort 2012

- ▲ Dedicated Bird Survey
- Fauna Plot
- Nocturnal (Call Playback & Spotlighting)
- Anabat
- Inspection Point
- Dedicated Herp Search
- Flora plot / Random Meander

- Combined Survey Area (Preferred Infrastructure Layout)
- Combined Survey Area (Alternative Infrastructure Layout)

- ▲ Indicative Turbine Locations
- Substations
- +— Overhead Powerlines
- - - Underground Powerlines
- Proposed Tracks
- Existing Roads
- Wind Farm Site Boundary



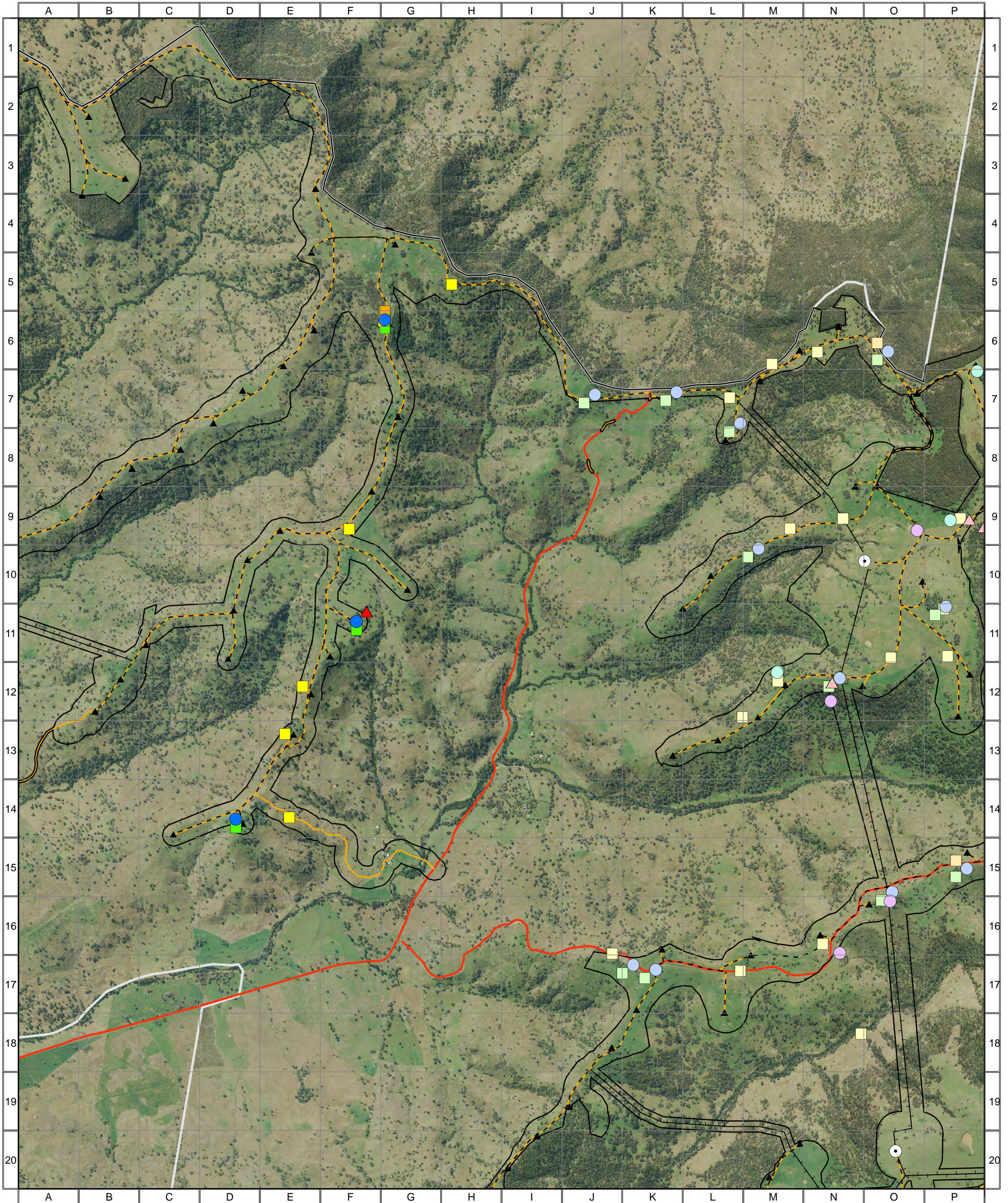
0 0.25 0.5 1 1.5 Kilometres


Approx. Scale @ A3 1:32500  
 Ref: 4777 - Liverpool Range Wind Farm  
 Produced by: Tom Hamilton  
 Date: 15 November 2013  
 Projection: GDA94 MGA Zone 55



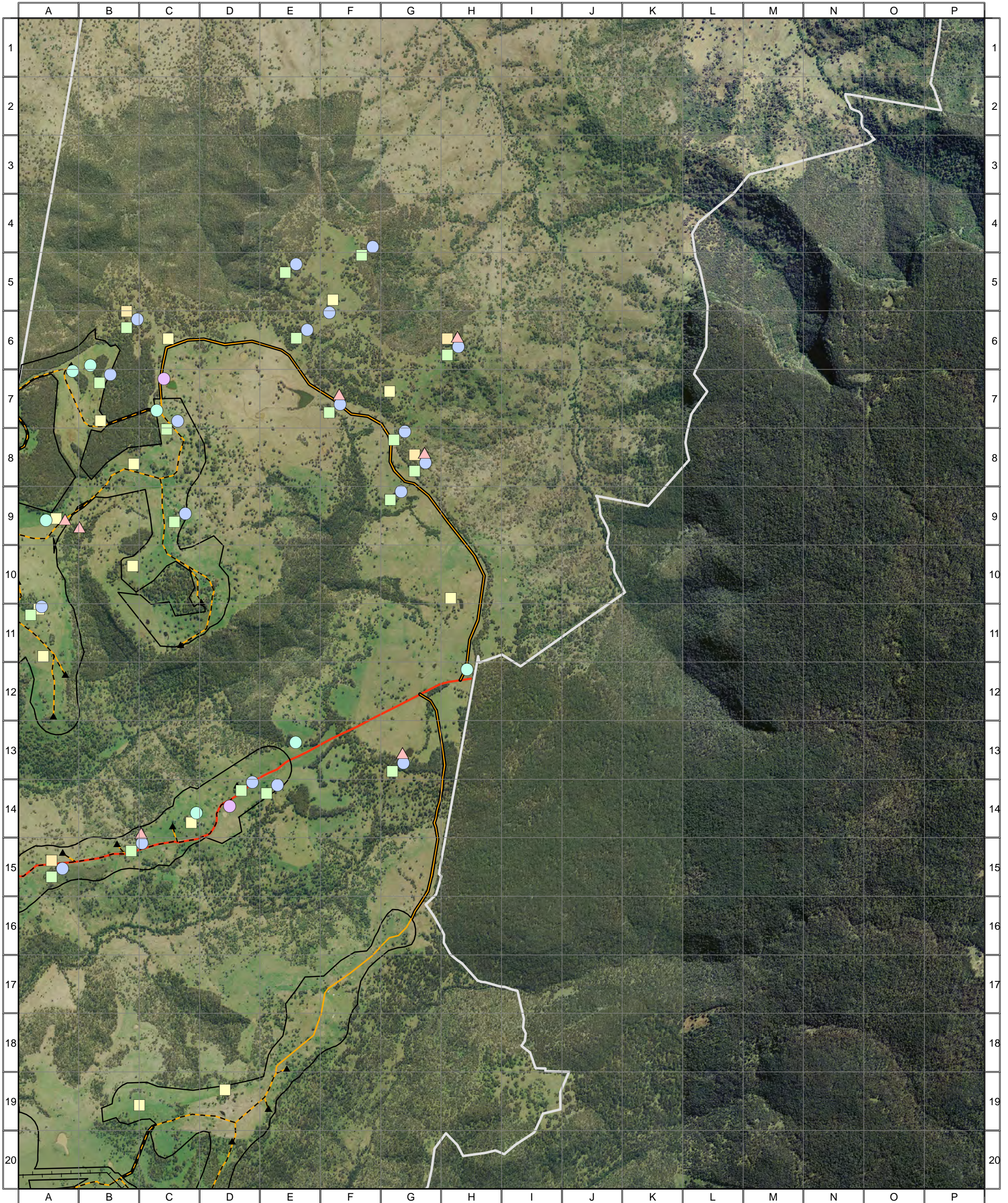
*Based on Infrastructure datasets provided by Epuron (2011-2013)  
 Aerial Photography provided by Epuron (Aug. 2011)  
 (C) Copyright Commonwealth of Australia (Geoscience Australia) 2008*

# 4777 - Liverpool Range (WF Study Area, Map 2) - Survey Effort



<b>Survey Effort 2013</b> <ul style="list-style-type: none"> <li><span style="color: red;">▲</span> Dedicated Bird Survey</li> <li><span style="color: blue;">●</span> Fauna Plot</li> <li><span style="color: cyan;">●</span> Nocturnal (Call Playback and Spotlighting)</li> <li><span style="color: purple;">●</span> Anabat</li> <li><span style="color: black;">●</span> IR Camera Trap</li> <li><span style="color: yellow;">■</span> Inspection Point</li> <li><span style="color: orange;">■</span> Dedicated Herp Search</li> <li><span style="color: green;">■</span> Flora plot / Random Meander</li> </ul>		<b>Survey Effort 2012</b> <ul style="list-style-type: none"> <li><span style="color: red;">▲</span> Dedicated Bird Survey</li> <li><span style="color: blue;">●</span> Fauna Plot</li> <li><span style="color: cyan;">●</span> Nocturnal (Call Playback &amp; Spotlighting)</li> <li><span style="color: purple;">●</span> Anabat</li> <li><span style="color: yellow;">■</span> Inspection Point</li> <li><span style="color: orange;">■</span> Dedicated Herp Search</li> <li><span style="color: green;">■</span> Flora plot / Random Meander</li> </ul>		<ul style="list-style-type: none"> <li><span style="border: 1px solid black; display: inline-block; width: 15px; height: 10px;"></span> Combined Survey Area (Preferred Infrastructure Layout)</li> <li><span style="color: black;">▲</span> Indicative Turbine Locations</li> <li><span style="border: 1px solid black; border-radius: 50%; width: 10px; height: 10px; display: inline-block;"></span> Substations</li> <li><span style="color: black;">—+—</span> Overhead Powerlines</li> <li><span style="color: black;">- - -</span> Underground Powerlines</li> <li><span style="color: yellow;">—</span> Proposed Tracks</li> <li><span style="color: red;">—</span> Existing Roads</li> <li><span style="border: 1px solid black; display: inline-block; width: 15px; height: 10px;"></span> Wind Farm Site Boundary</li> </ul>		 <p>0 0.25 0.5 1 1.5 Kilometres</p> <p>Approx. Scale @ A3 1:32500                  Ref: 4777 - Liverpool Range Wind Farm                  Produced by: Tom Hamilton                  Date: 15 November 2013                  Projection: GDA94 MGA Zone 55</p> <p><small>Based on Infrastructure datasets provided by Epuron (2011-2013)                  Aerial Photography provided by Epuron (Aug. 2011)                  (C) Copyright Commonwealth of Australia (Geoscience Australia) 2008</small></p>	
---	--	--	--	---	--	--	--

# 4777 - Liverpool Range (WF Study Area, Map 3) - Survey Effort



### Survey Effort 2013

- ▲ Dedicated Bird Survey
- Fauna Plot
- Nocturnal (Call Playback and Spotlighting)
- Anabat
- IR Camera Trap
- Inspection Point
- Dedicated Herp Search
- Flora plot / Random Meander

### Survey Effort 2012

- ▲ Dedicated Bird Survey
- Fauna Plot
- Nocturnal (Call Playback & Spotlighting)
- Anabat
- Inspection Point
- Dedicated Herp Search
- Flora plot / Random Meander

Combined Survey Area (Preferred Infrastructure Layout)

- ▲ Indicative Turbine Locations
- Substations
- +— Overhead Powerlines
- - - Underground Powerlines
- Proposed Tracks
- Existing Roads
- Wind Farm Site Boundary



0 0.25 0.5 1 1.5 Kilometres


Approx. Scale @ A3 1:32500  
 Ref: 4777 - Liverpool Range Wind Farm  
 Produced by: Tom Hamilton  
 Date: 15 November 2013  
 Projection: GDA94 MGA Zone 55



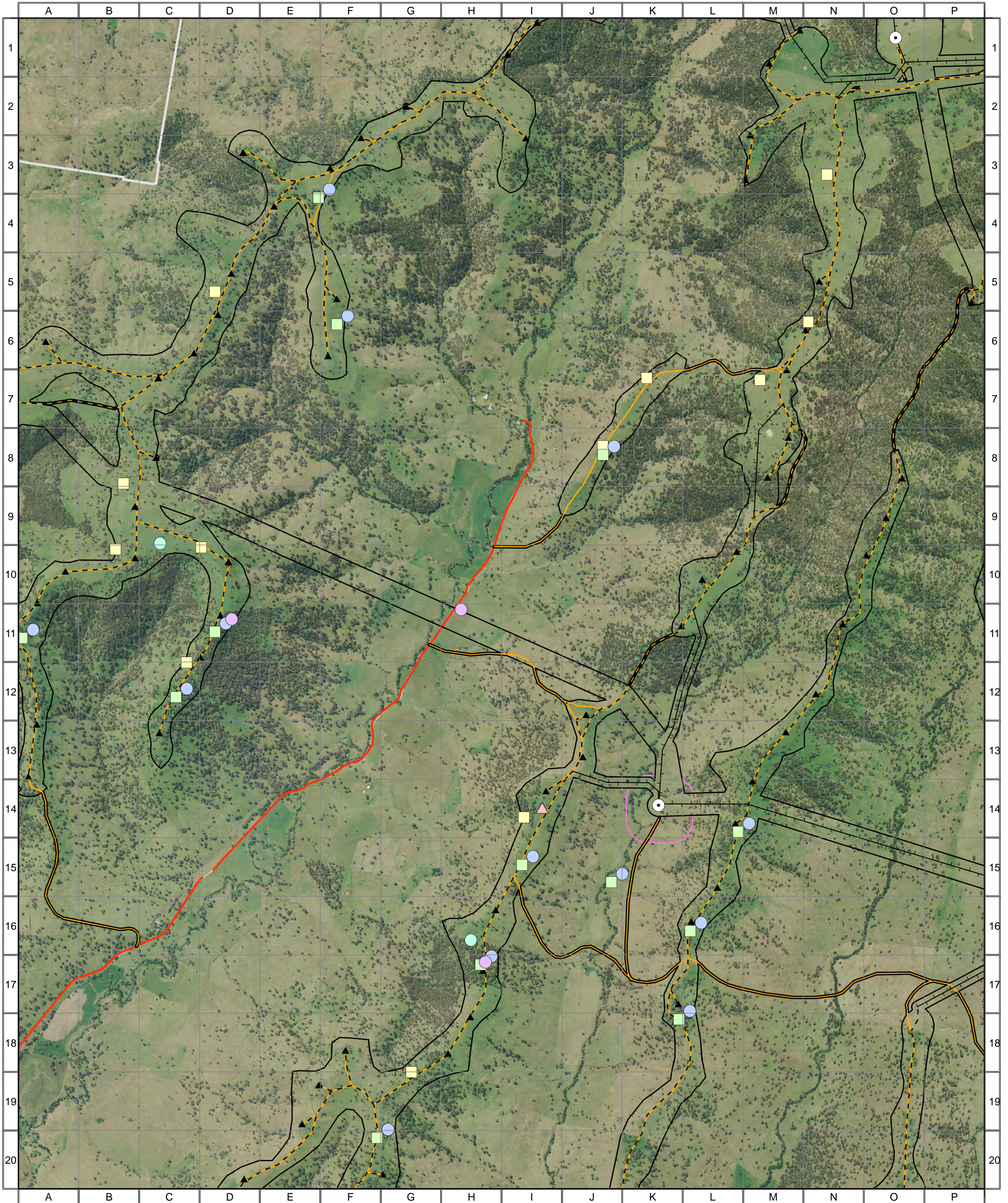
*Based on Infrastructure datasets provided by Epuron (2011-2013)  
 Aerial Photography provided by Epuron (Aug. 2011)  
 (C) Copyright Commonwealth of Australia (Geoscience Australia) 2008*

# 4777 - Liverpool Range (WF Study Area, Map 4) - Survey Effort



<b>Survey Effort 2013</b> <ul style="list-style-type: none"> <li><span style="color: red;">▲</span> Dedicated Bird Survey</li> <li><span style="color: blue;">●</span> Fauna Plot</li> <li><span style="color: cyan;">●</span> Nocturnal (Call Playback and Spotlighting)</li> <li><span style="color: purple;">●</span> Anabat</li> <li><span style="color: black;">●</span> IR Camera Trap</li> <li><span style="color: yellow;">■</span> Inspection Point</li> <li><span style="color: orange;">■</span> Dedicated Herp Search</li> <li><span style="color: green;">■</span> Flora plot / Random Meander</li> </ul>		<b>Survey Effort 2012</b> <ul style="list-style-type: none"> <li><span style="color: red;">▲</span> Dedicated Bird Survey</li> <li><span style="color: blue;">●</span> Fauna Plot</li> <li><span style="color: cyan;">●</span> Nocturnal (Call Playback &amp; Spotlighting)</li> <li><span style="color: purple;">●</span> Anabat</li> <li><span style="color: yellow;">■</span> Inspection Point</li> <li><span style="color: orange;">■</span> Dedicated Herp Search</li> <li><span style="color: green;">■</span> Flora plot / Random Meander</li> </ul>		<ul style="list-style-type: none"> <li><span style="border: 1px solid black; display: inline-block; width: 15px; height: 10px;"></span> Combined Survey Area (Preferred Infrastructure Layout)</li> <li><span style="color: black;">▲</span> Indicative Turbine Locations</li> <li><span style="border: 1px solid black; border-radius: 50%; width: 10px; height: 10px; display: inline-block;"></span> Substations</li> <li><span style="color: black;">—+—</span> Overhead Powerlines</li> <li><span style="color: black;">- - -</span> Underground Powerlines</li> <li><span style="color: yellow;">—</span> Proposed Tracks</li> <li><span style="color: red;">—</span> Existing Roads</li> <li><span style="border: 1px solid white; display: inline-block; width: 15px; height: 10px;"></span> Wind Farm Site Boundary</li> </ul>		 <p>0 0.25 0.5 1 1.5 Kilometres</p> <p>Approx. Scale @ A3 1:32500                  Ref: 4777 - Liverpool Range Wind Farm                  Produced by: Tom Hamilton                  Date: 15 November 2013                  Projection: GDA94 MGA Zone 55</p> <p><i>Based on Infrastructure datasets provided by Epuron (2011-2013)                  Aerial Photography provided by Epuron (Aug. 2011)                  (C) Copyright Commonwealth of Australia (Geoscience Australia) 2008</i></p>	
---	--	--	--	---	--	--	--

# 4777 - Liverpool Range (WF Study Area, Map 5) - Survey Effort



## Survey Effort 2013

- ▲ Dedicated Bird Survey
- Fauna Plot
- Nocturnal (Call Playback and Spotlighting)
- Anabat
- IR Camera Trap
- Inspection Point
- Dedicated Herp Search
- Flora plot / Random Meander

## Survey Effort 2012

- ▲ Dedicated Bird Survey
- Fauna Plot
- Nocturnal (Call Playback & Spotlighting)
- Anabat
- Inspection Point
- Dedicated Herp Search
- Flora plot / Random Meander

- Combined Survey Area (Preferred Infrastructure Layout)
- Combined Survey Area (Alternative Infrastructure Layout)

- ▲ Indicative Turbine Locations
- Substations
- +— Overhead Powerlines
- - - Underground Powerlines
- Proposed Tracks
- Existing Roads
- Wind Farm Site Boundary



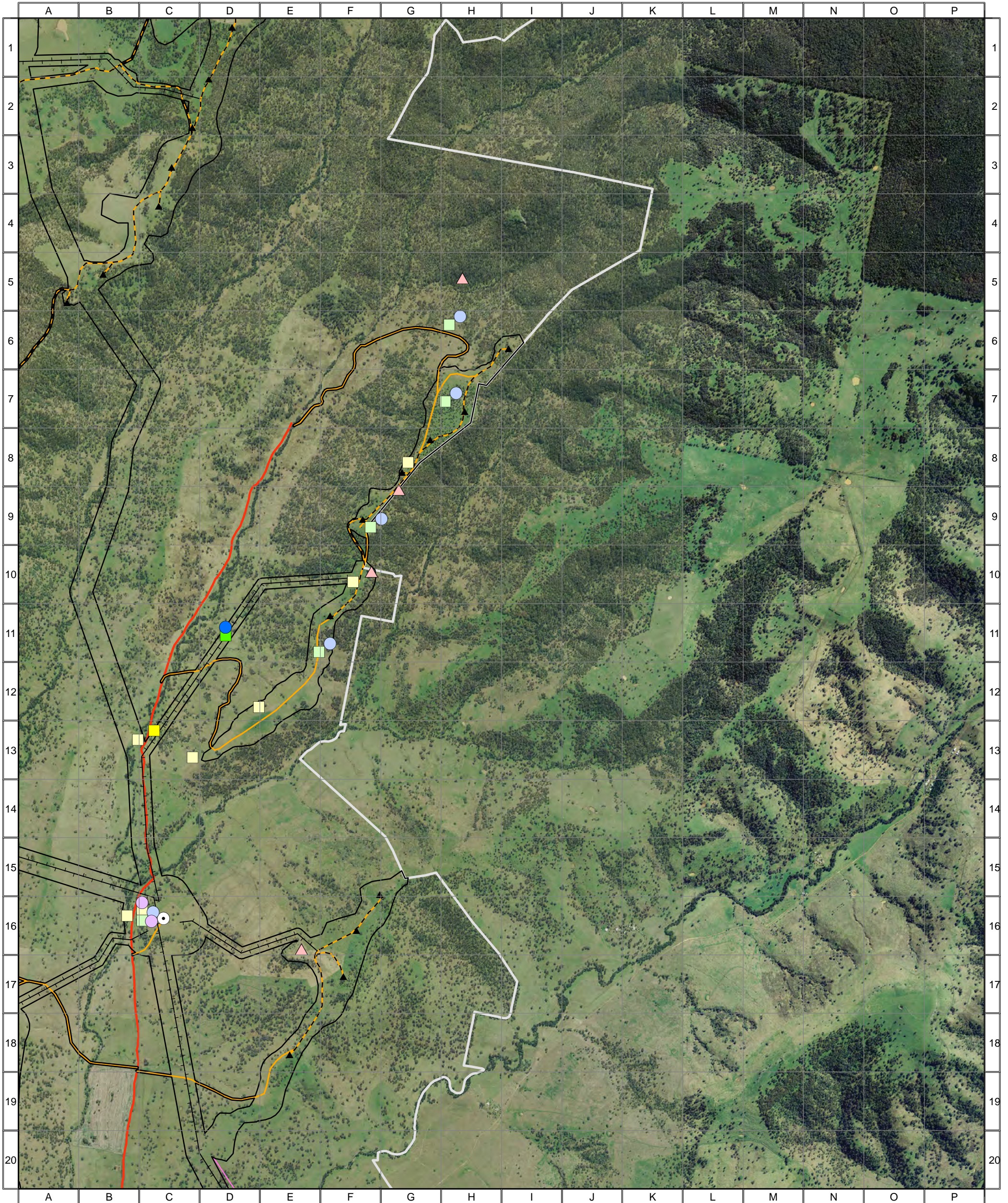
0 0.25 0.5 1 1.5 Kilometres

Approx. Scale @ A3 1:32500  
 Ref: 4777 - Liverpool Range Wind Farm  
 Produced by: Tom Hamilton  
 Date: 15 November 2013  
 Projection: GDA94 MGA Zone 55



*Based on Infrastructure datasets provided by Epuron (2011-2013)  
 Aerial Photography provided by Epuron (Aug. 2011)  
 (C) Copyright Commonwealth of Australia (Geoscience Australia) 2008*

# 4777 - Liverpool Range (WF Study Area, Map 6) - Survey Effort



### Survey Effort 2013

- ▲ Dedicated Bird Survey
- Fauna Plot
- Nocturnal (Call Playback and Spotlighting)
- Anabat
- IR Camera Trap
- Inspection Point
- Dedicated Herp Search
- Flora plot / Random Meander

### Survey Effort 2012

- ▲ Dedicated Bird Survey
- Fauna Plot
- Nocturnal (Call Playback & Spotlighting)
- Anabat
- Inspection Point
- Dedicated Herp Search
- Flora plot / Random Meander

- Combined Survey Area (Preferred Infrastructure Layout)
- Combined Survey Area (Alternative Infrastructure Layout)

- ▲ Indicative Turbine Locations
- Substations
- Overhead Powerlines
- Underground Powerlines
- Proposed Tracks
- Existing Roads
- Wind Farm Site Boundary



0 0.25 0.5 1 1.5 Kilometres

Approx. Scale @ A3 1:32500  
 Ref: 4777 - Liverpool Range Wind Farm  
 Produced by: Tom Hamilton  
 Date: 15 November 2013  
 Projection: GDA94 MGA Zone 55



*Based on Infrastructure datasets provided by Epuron (2011-2013)  
 Aerial Photography provided by Epuron (Aug. 2011)  
 (C) Copyright Commonwealth of Australia (Geoscience Australia) 2008*