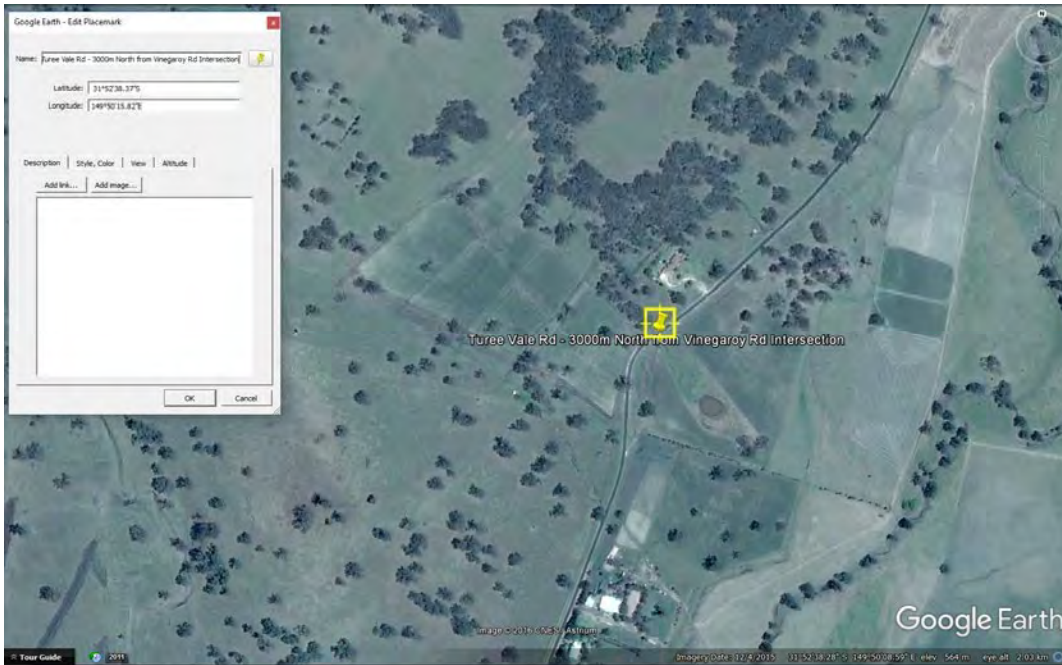


S038 – Turee Vale Road 3000m North of Vinegaroy Intersection
6m by 10m causeway with 1200mm Pipe Culvert
Fair Condition and Serviceable



S038 - Location Plan



S038 - 6m-10m CAUSEWAY, View to East



S038 - 1200mm Pipe Culvert



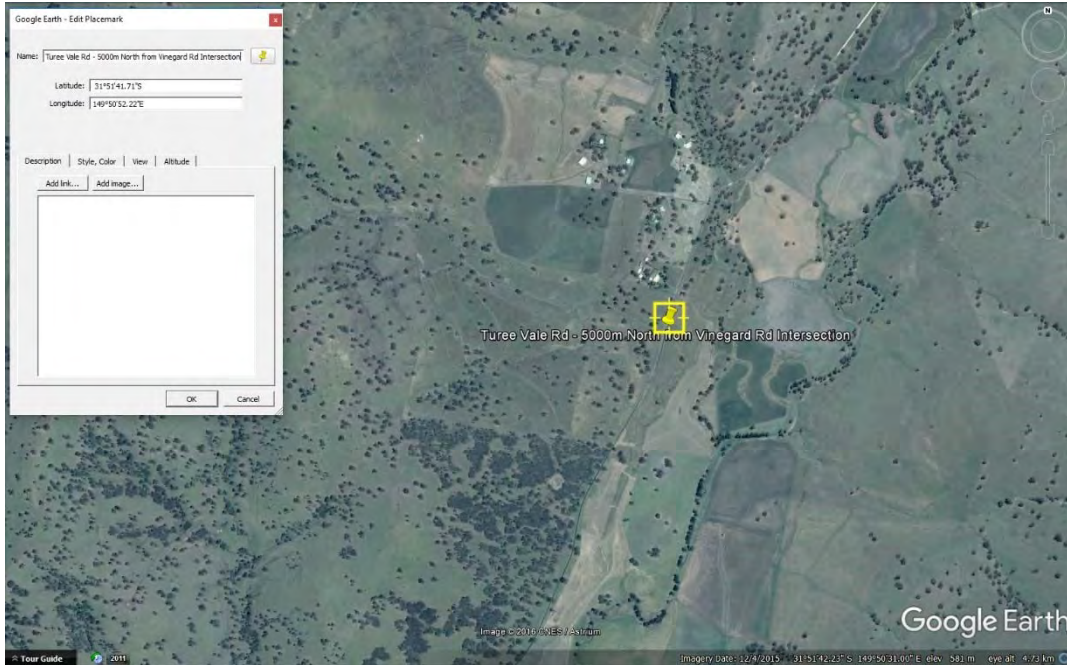
S038 – Interior View

S039 – Turee Vale Rd - 5000m North from Vinegaroy Rd Intersection

Concrete causeway with bitumen seal, no pipe.

Poor Condition and Serviceable,

Upgrade may be required.



S039 – Location Plan



S039 - Causeway no pipe

Level 2, 39 Sherwood Road
Toowong QLD 4066

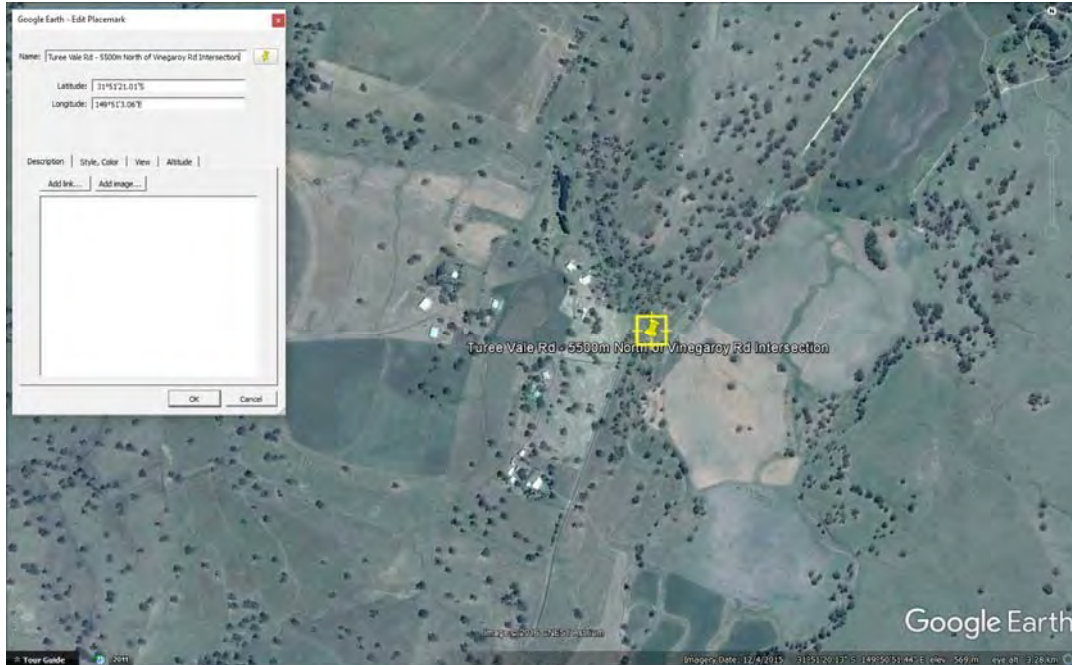
mail@icubed.com.au
www.icubed.com.au

P: 07 3870 8888



S039 – Moisture on sides of causeway

S040 – Turee Vale - 5500m North of Vinegaroy Rd Causeway.
Partially submerged
Poor Condition and Serviceable



S040 – Location Plan



S040 – View to North

Level 2, 39 Sherwood Road
Toowong QLD 4066

mail@icubed.com.au
www.icubed.com.au

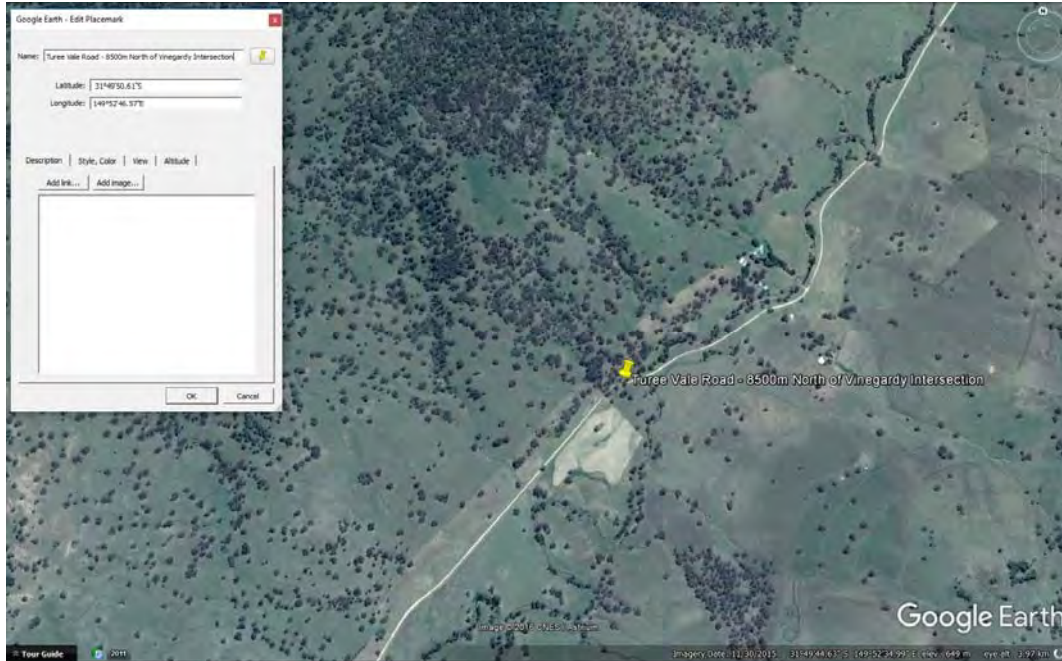
P: 07 3870 8888

S041 – Turee Vale Road - 8500m North of Vinegaroy Intersection

Causeway constricted by trees, partially submerged

Poor Condition and Serviceable,

May require upgrade



S041 – Location Plan

S042 – Mogadore Bridge – 1000m West of Vinegaroy - Rotherwood Road Intersection
4 x 9000mm by 7500mm spans of Tapered Hume deck, on Turee Creek
Fair condition and serviceable



S042 – Location Plan



S042 –View to North

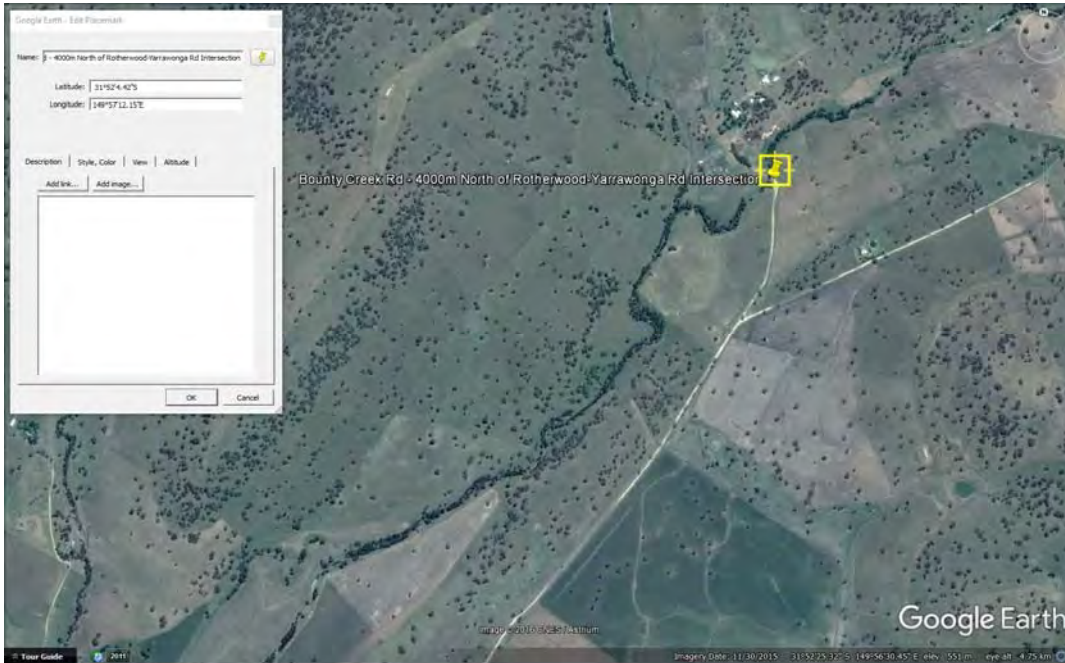


S042 – View to East



S042 – Soffit View

S043 - Bounty Creek Rd - 4000m North of Rotherwood-Yarrowonga Rd Intersection
Concrete Causeway with a 750mm invert culvert
Good condition and serviceable



S043 – Location Plan



S043 – Pipe Culvert



S043 – View to West

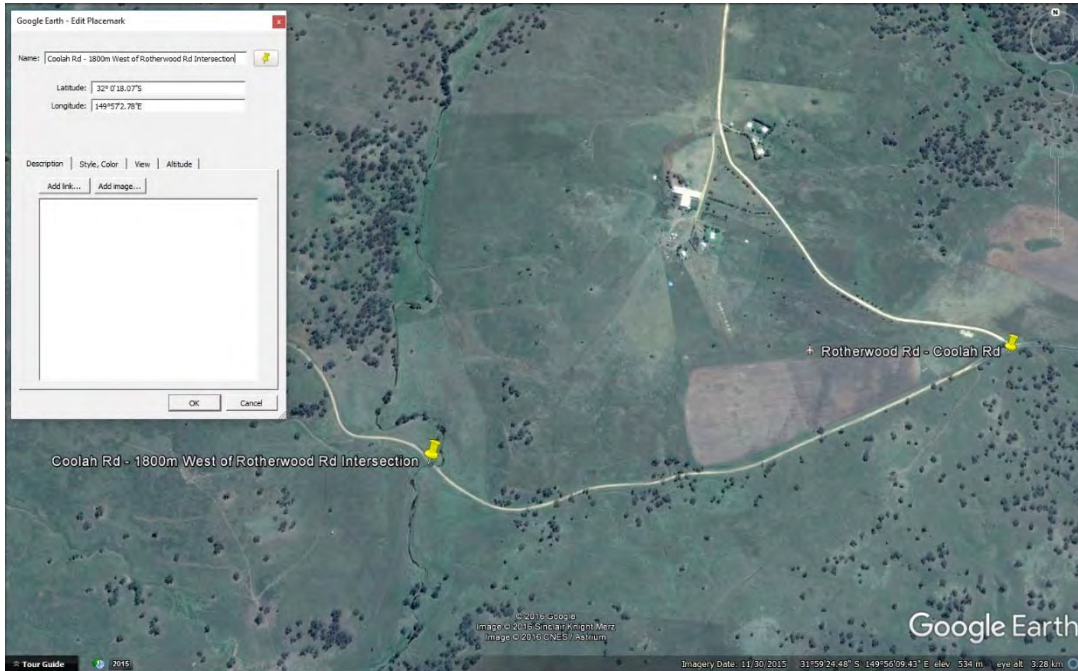
S044 –Coolah Road – 1800m West of Rotherwood Rd Intersection

Causeway on Four Mile Creek

Prone to flooding, and submerged at time of inspection

Poor condition and partially serviceable

Reconstruction/upgrading may be required.



S044 – Location Plan

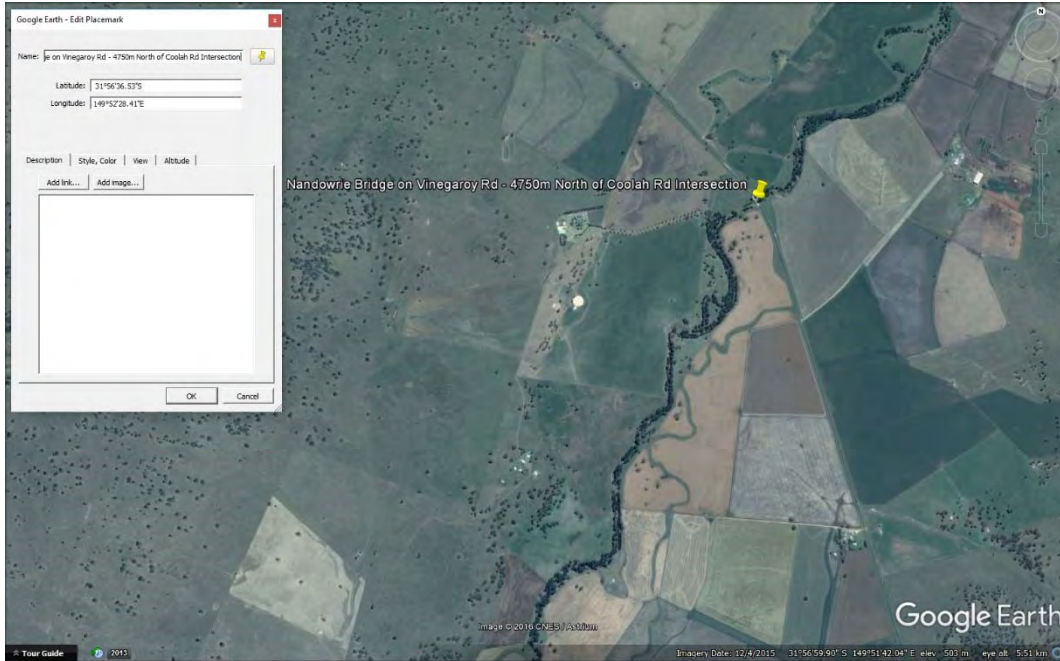


S044- View to South



S044- Slippery Surface Caution sign

S045 – Nandowrie Bridge on Vinegaroy Rd - 4750m North of Coolah Rd Intersection
4 of 15m x 9 wide mlock bridge on Talbragar River
Constructed 2008,
Fair condition and serviceable.



S045 – Location Plan



S045 – Bridge, View to North

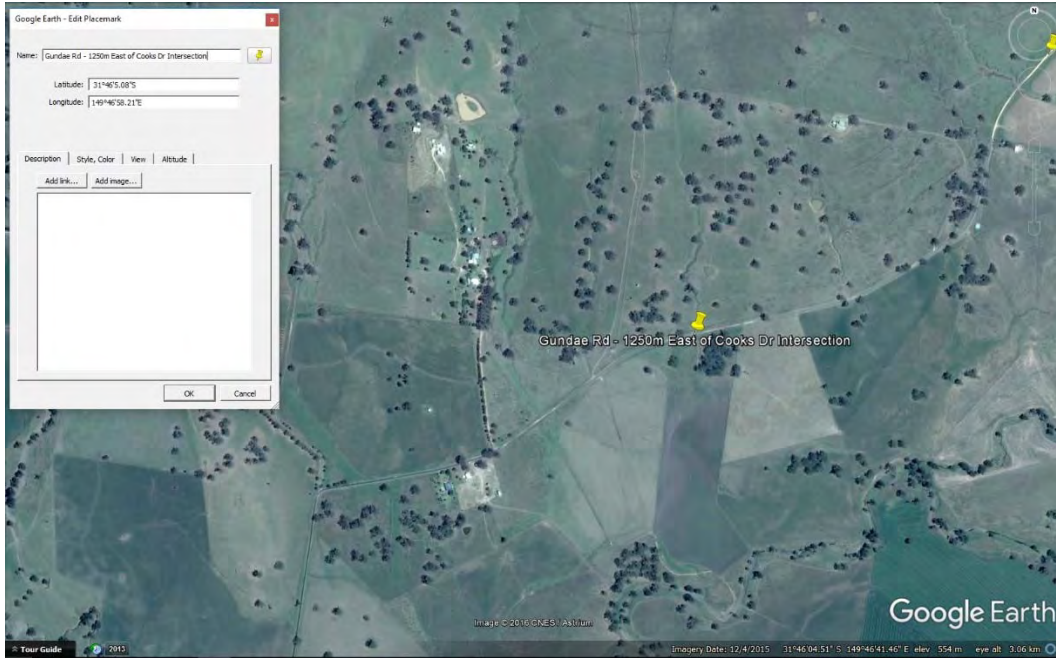


S045 – Marking showing completion date



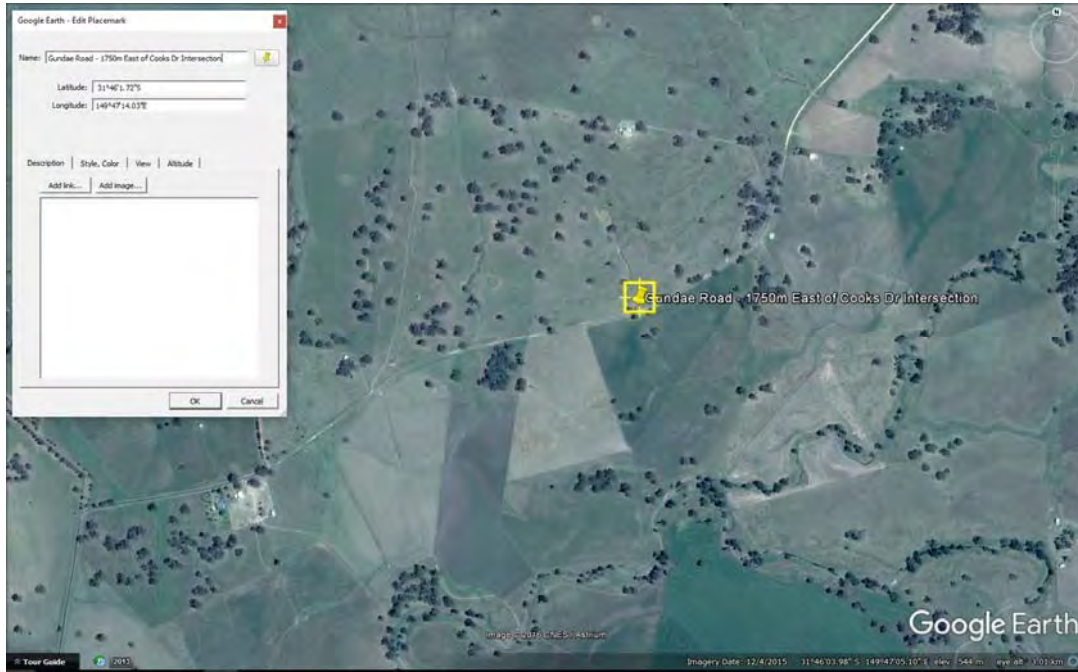
S045 – Soffit View

S046 – Gundare Rd - 1250m East of Cooks Dr Intersection
Culvert of Approximately 300mm in Diameter



S046 – Location Plan

S047 – Gundae Road - 1750m East of Cooks Dr Intersection
Causeway, 600mm Pipe Culvert
Fair Condition and Serviceable



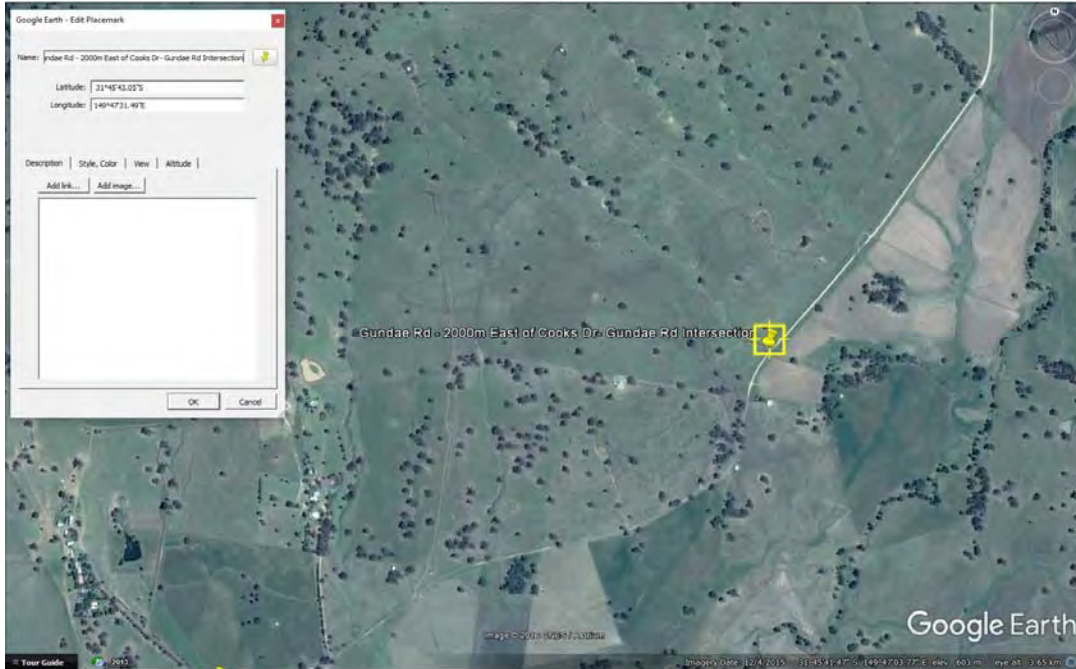
S047 – Location Plan



S048 – Gundare Rd - 2000m East of Cooks Dr- Gundare Rd Intersection Causeway.

New culvert will be required for this location.

Survey required to verify compliance with vertical geometry requirements of the proposed heavy vehicle configurations.



S048 – Location Plan

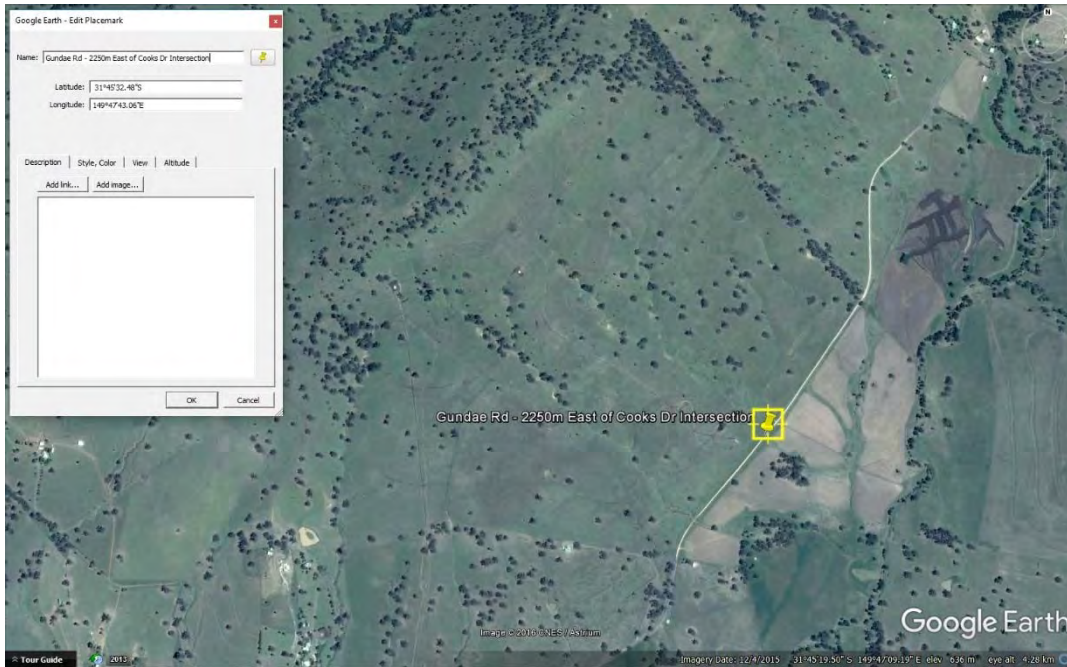


S048- View to North



S048- View to South

S049 – Gundae Rd- 2250m East of Cooks Dr Intersection
Causeway.
New pipe culvert required.

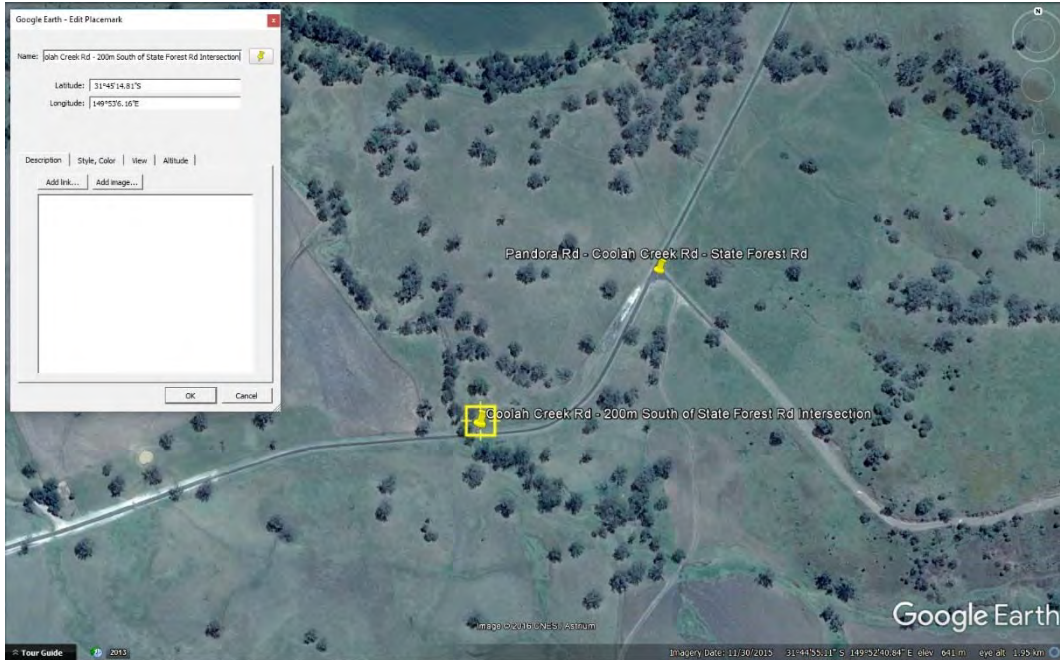


S049 – Location Plan



S049 – View to North

S050 - Coolah Creek Rd - 200m South of Forest State Road Rd Intersection 3-1200mm
3 Pipe Culverts
Fair Condition and Serviceable

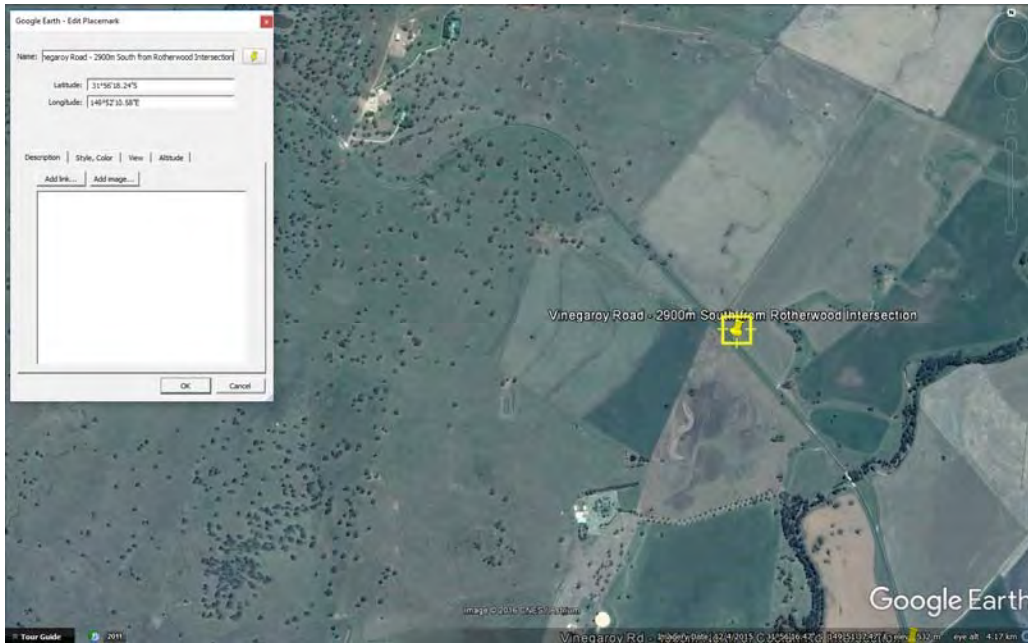


S050 – Location Plan



S050 – View to East

S051 – Vinegaroy Rd – 2900m South from Rotherwood Rd Intersection
Concrete twin box culvert – 2/1200mm by 600mm
Fair Condition and Serviceable

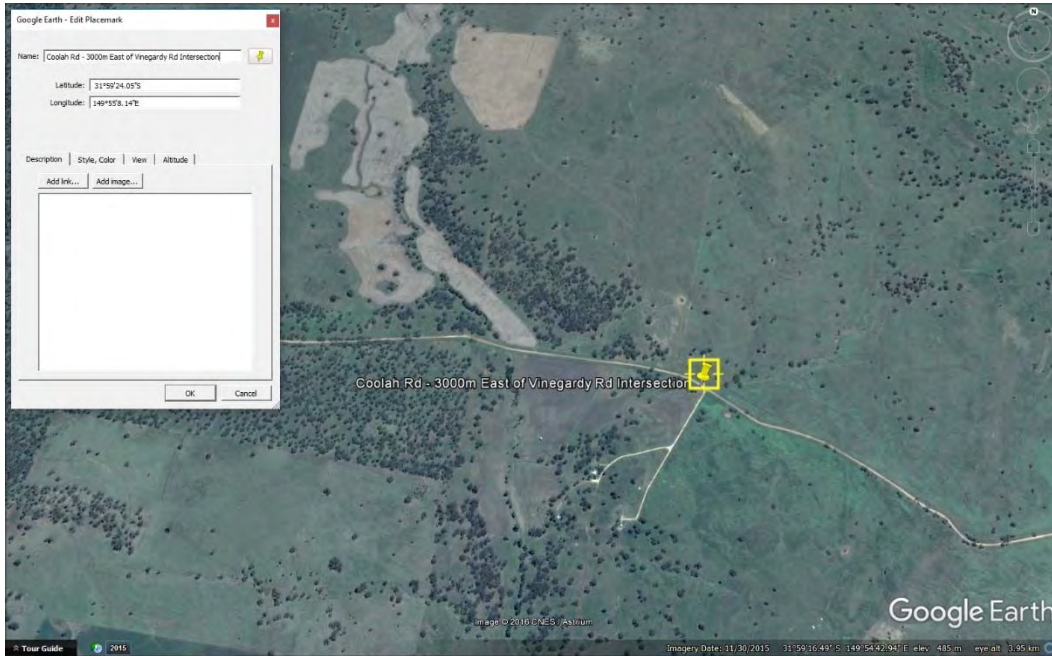


S051 – Location Plan



S051 - Box Culvert End View

S052 – Coolah Road – 3000m East of Vinegaroy-Coolah Road Intersection
Reinforced Concrete Box Culvert – 3 x 1600mm square
Good condition and serviceable



S052 – Location Plan



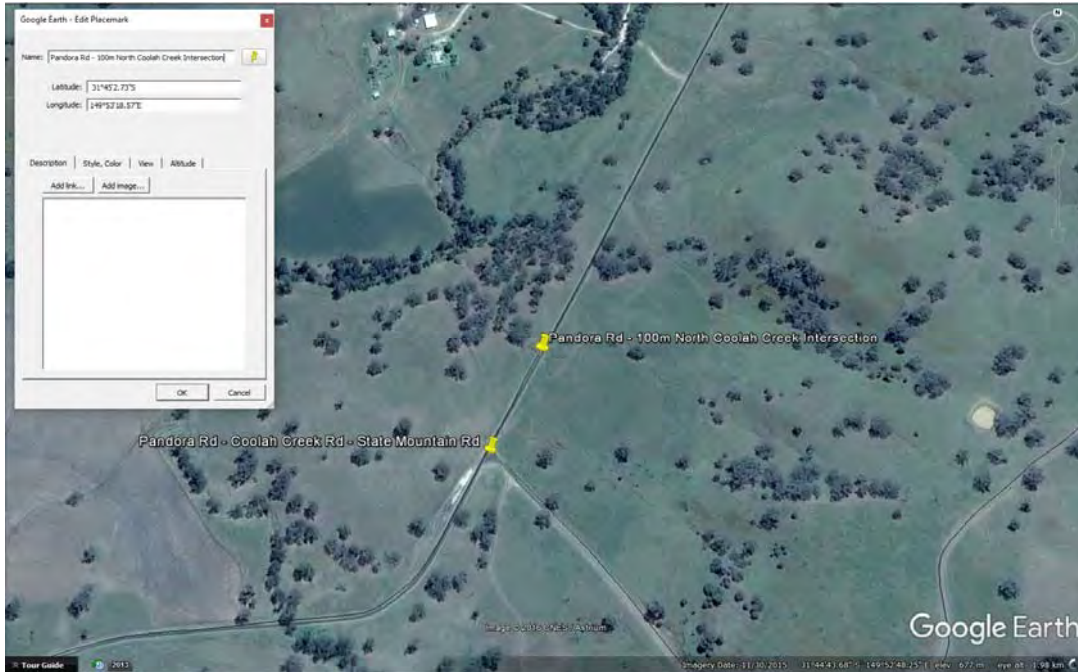
S052 – Box Culvert

S053 - Pandora Rd - 100m North of Coolah Creek Intersection

1200mm Pipe Culverts

Invert cracking and evidence of a failed joint repair.

Poor Condition and Serviceable



S053 – Location Plan



S053 – View to North

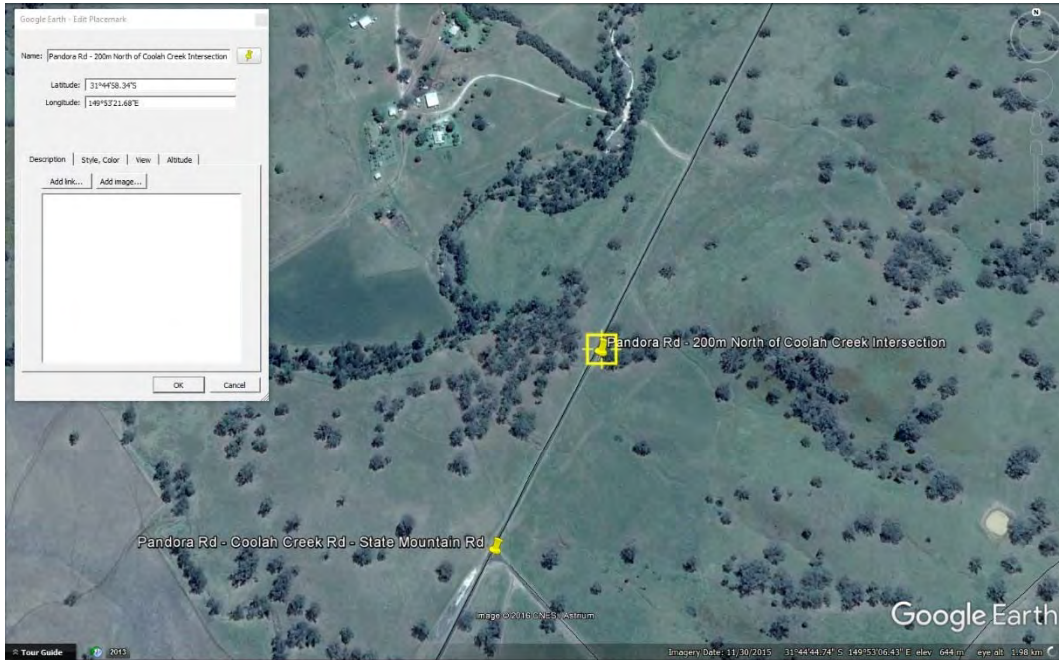


S053 – View of 1200 Pipe Culvert



S053 – Internal View

S054 - Pandora Rd - 200m North of Coolah Creek Intersection
Dual-1050mm Pipe Culverts
Fair Condition and Serviceable

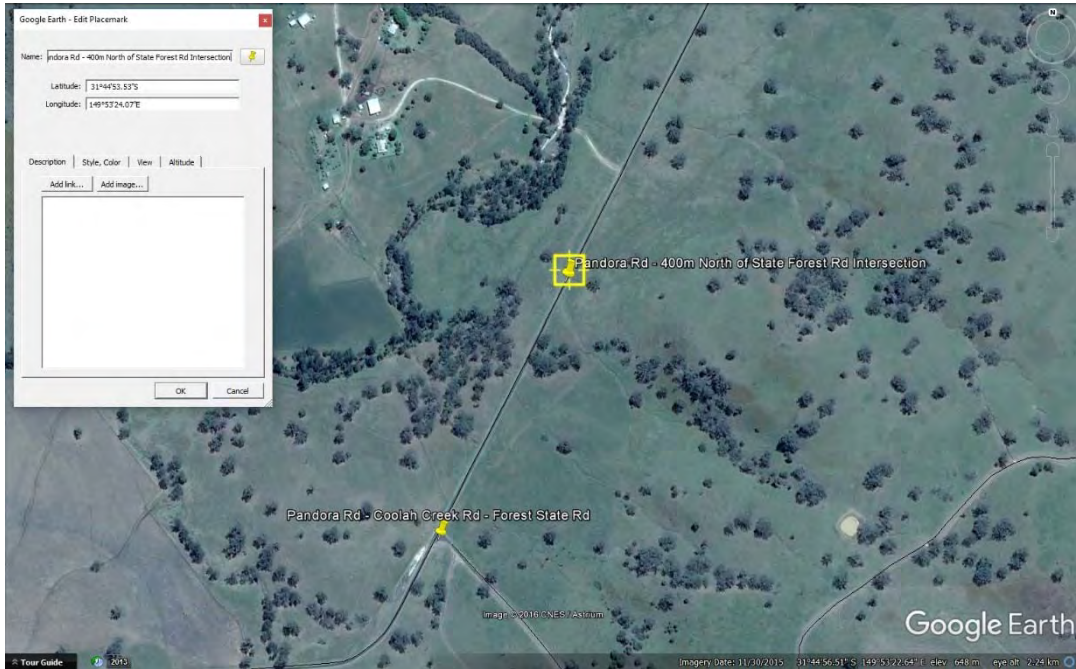


S054 - Site Location



S054 – View to North

S055 – Pandora Rd - 400m North of State Forest Rd Intersection
450mm Pipe Culvert with no headwall
Moderate Condition and Serviceable

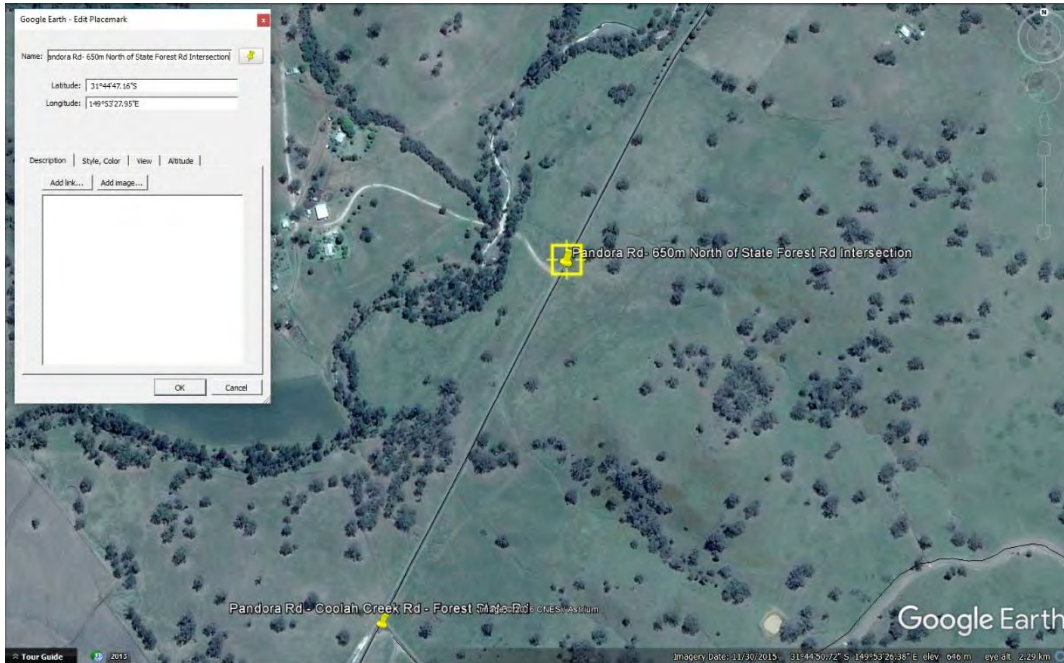


S055- Location Plan



S055 – North of North

S056 – Pandora Rd- 650m North of State Forest Rd Intersection
375mm Pipe Culvert with no headwall
Moderate Condition and Serviceable



S056 - Location Plan

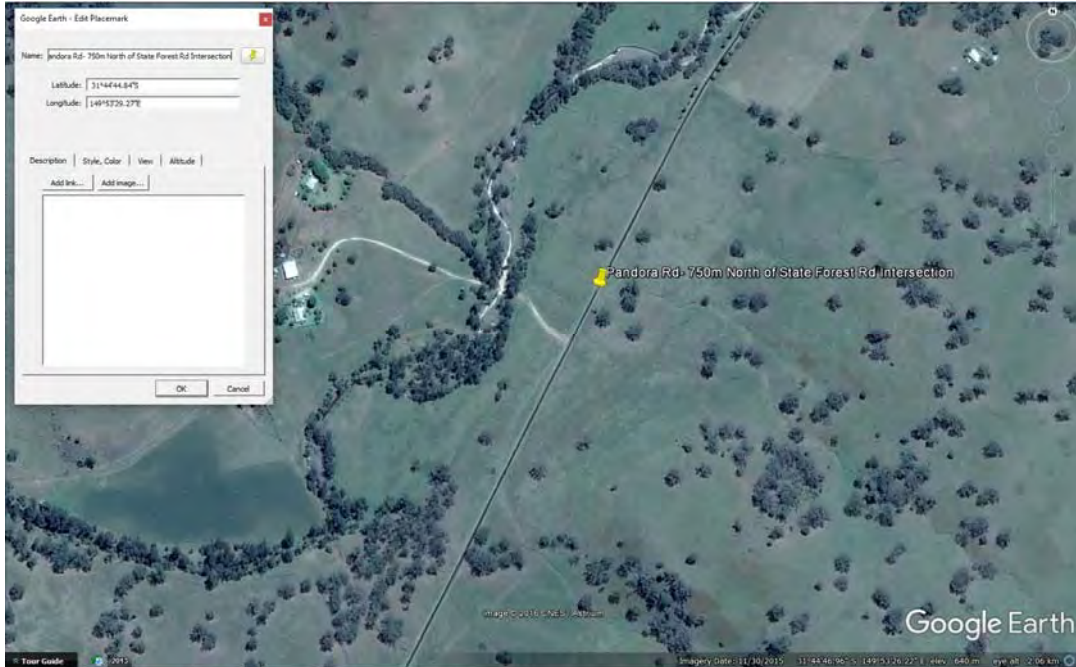


S056 – View to North



S056 – 375mm Pipe Culvert with no headwall

**S057 – Pandora Rd- 750m North of State Forest Rd Intersection Concrete Causeway 525mm Pipe Culvert with no headwall
Fair Condition and Serviceable**



S057 - Location Plan

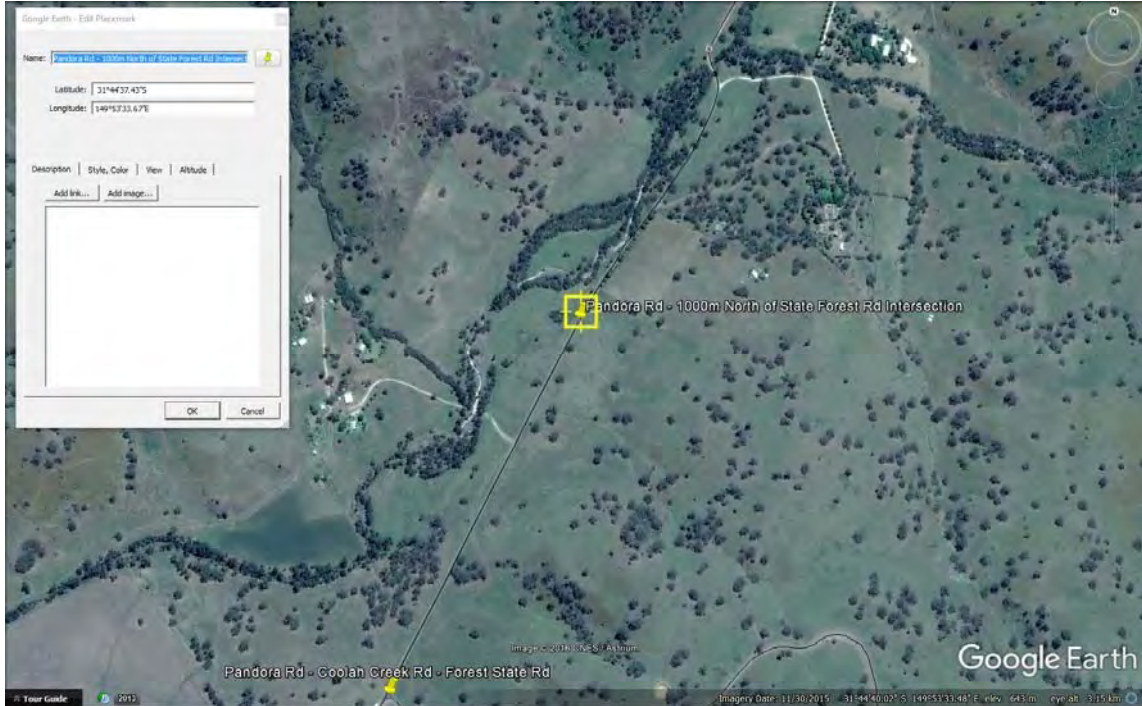


S057 – Internal View
Level 2, 39 Sherwood Road
Toowong QLD 4066



S057 – View to North

S058 – Pandora Rd - 1000m North of State Forest Rd Intersection
375mm Pipe Culvert NO HEADWALL
Unknown Condition

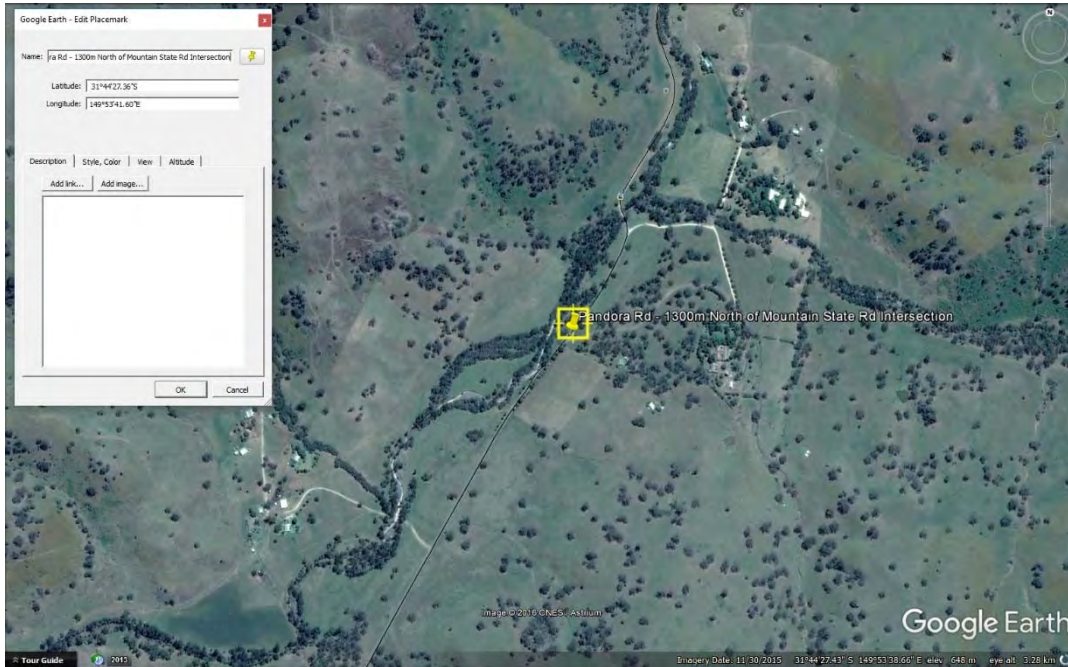


S058 – Location Plan

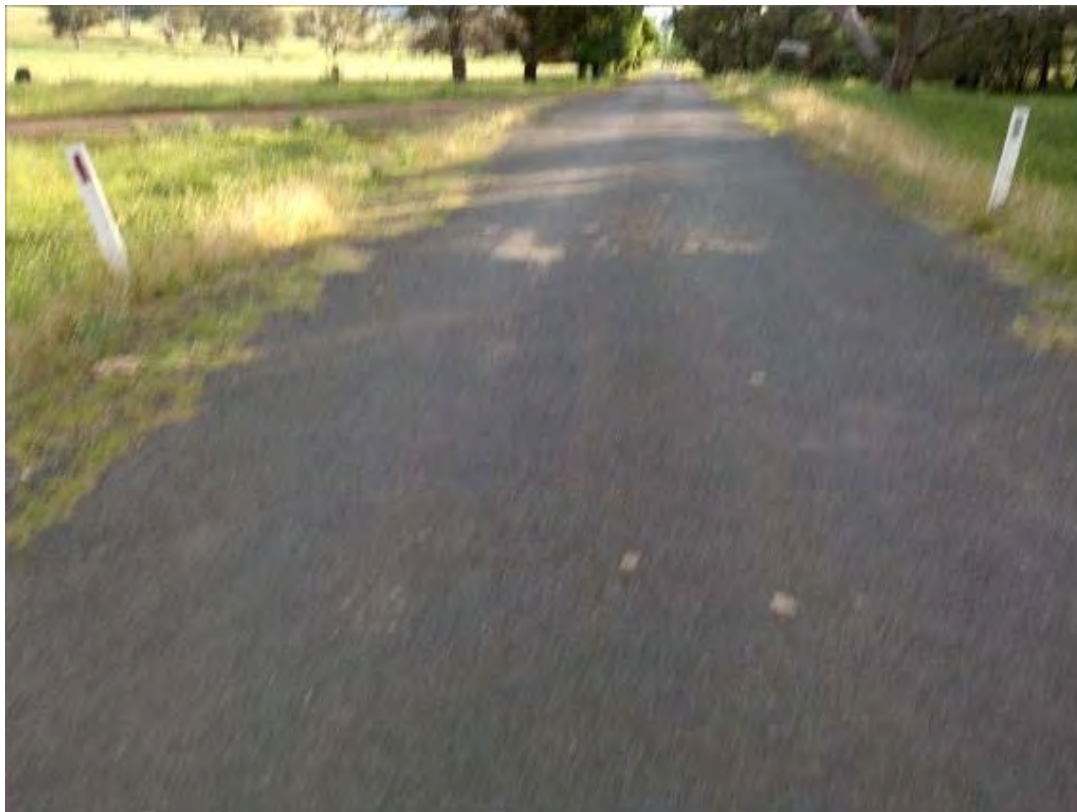


S058 – View to North

S059 - Pandora Rd - 1300m North of State Forest Rd Intersection
600mm Pipe Culvert no headwall
Moderate Condition and Serviceable



S059 – Location Plan

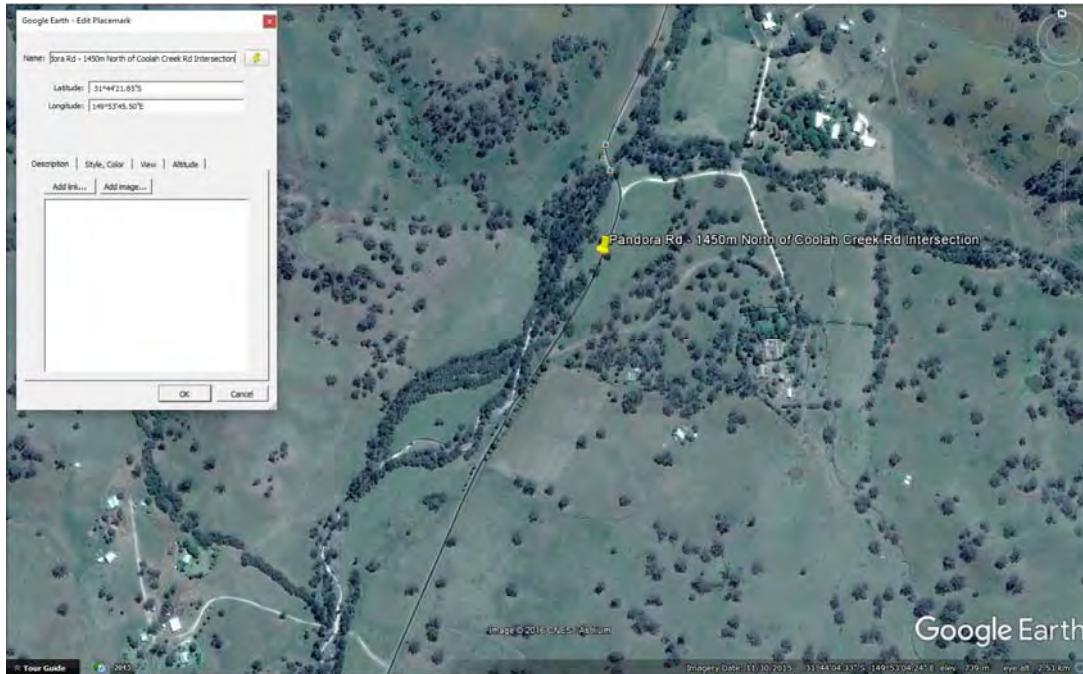


S059 – View to south



S059 – 600mm Pipe Culvert no headwall

S060 – Pandora Rd – 1450m North of Coolah Creek Rd Intersection
300mm Pipe Culvert no headwall
Condition Unknown

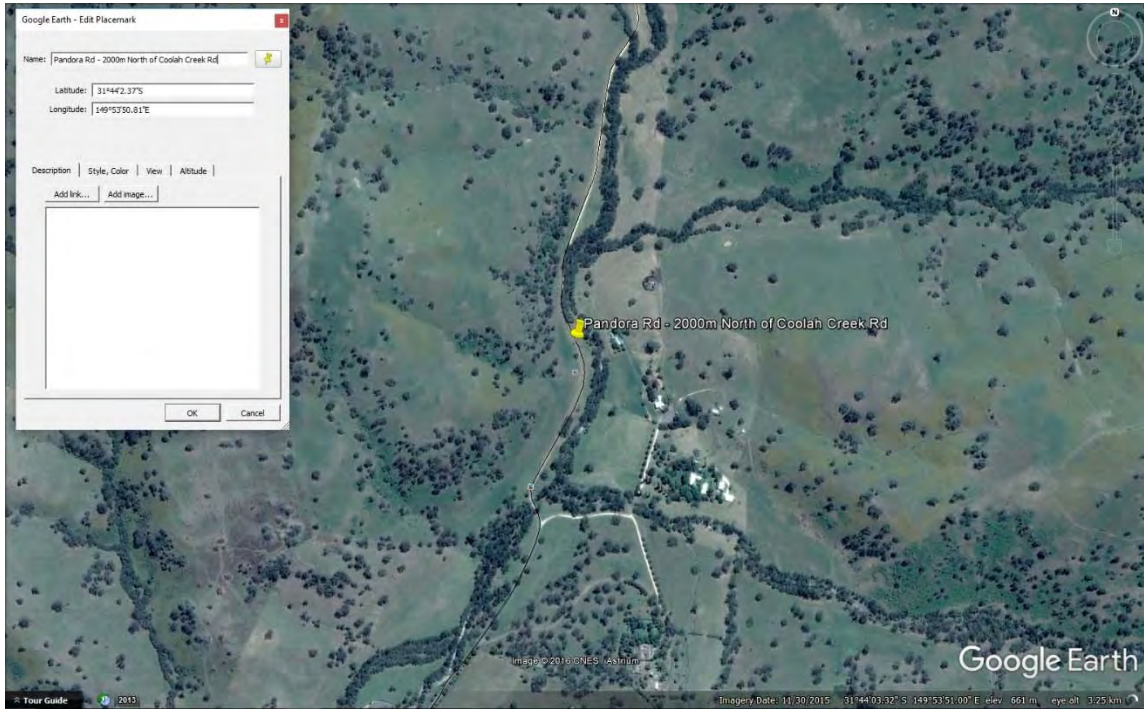


S060 – Location Plan



S060 – View to North

S061 – Pandora Rd - 2000m North of Coolah Creek Rd Intersection
375mm Pipe Culvert no headwall

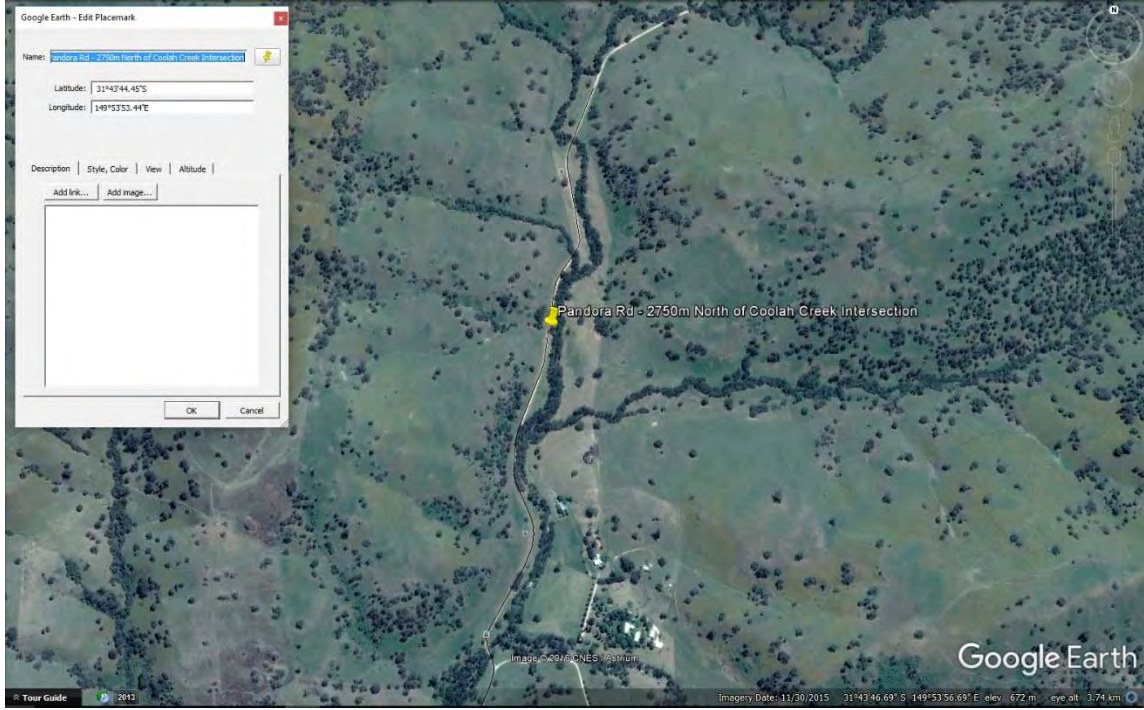


S061 – Location Plan

S062 – Pandora Rd - 2750m North of Coolah Creek Intersection

4000mm Concrete Causeway

Survey required to verify compliance with vertical geometry requirements of the proposed heavy vehicle configurations



S062 - Location Plan



S062 – View to North

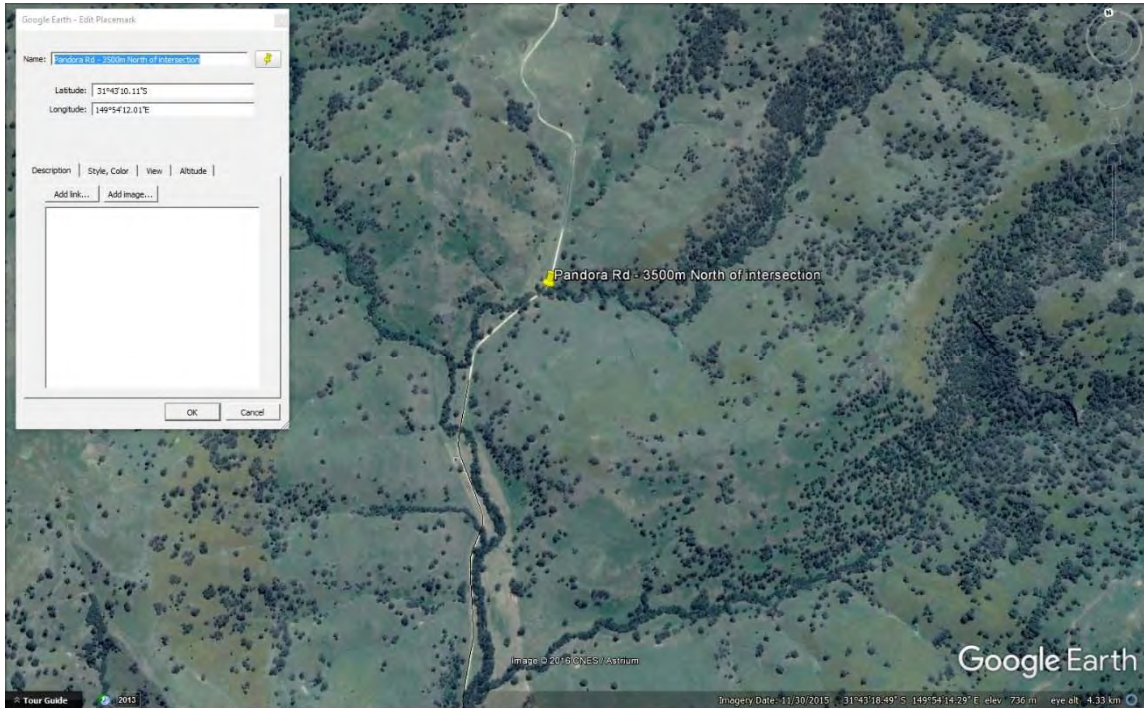
Level 2, 39 Sherwood Road
Toowong QLD 4066

mail@icubed.com.au
www.icubed.com.au

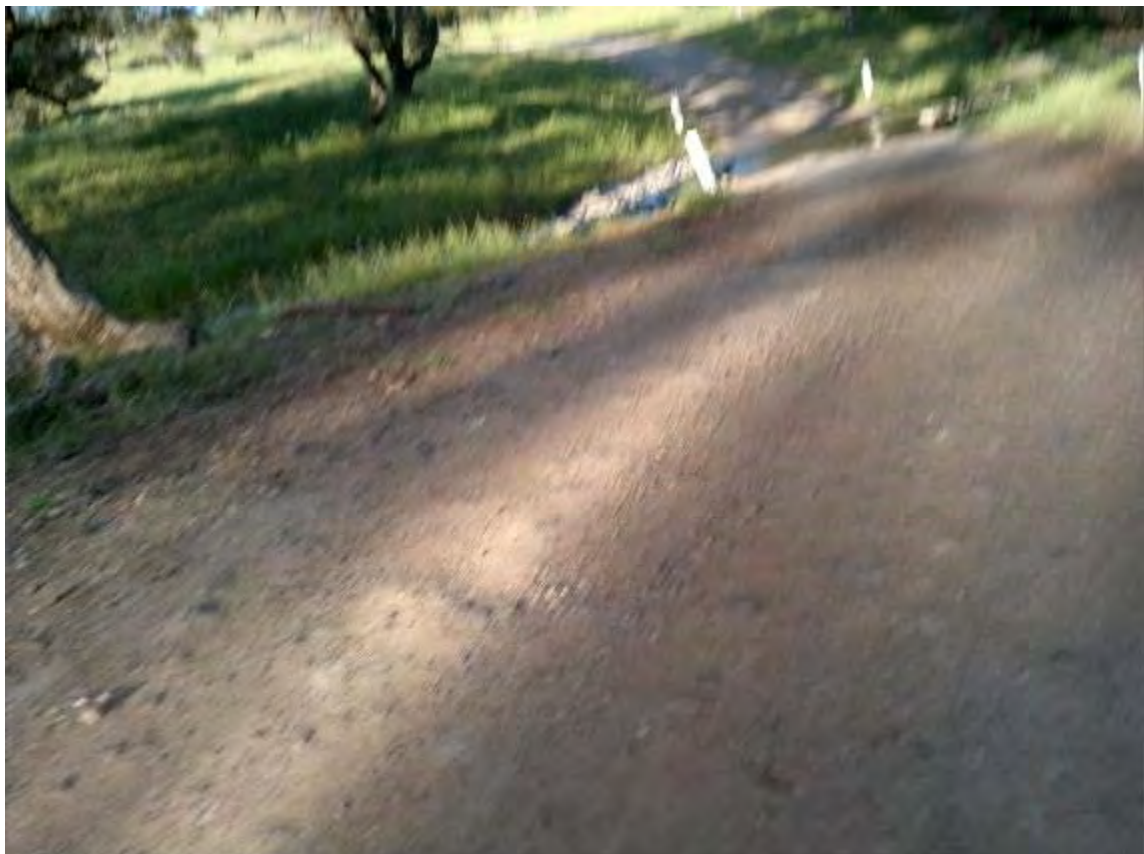
P: 07 3870 8888

S063- Pandora Rd - 3500m North of intersection

Causeway,
Partially submerged at time of inspection
Moderate Condition and Serviceable

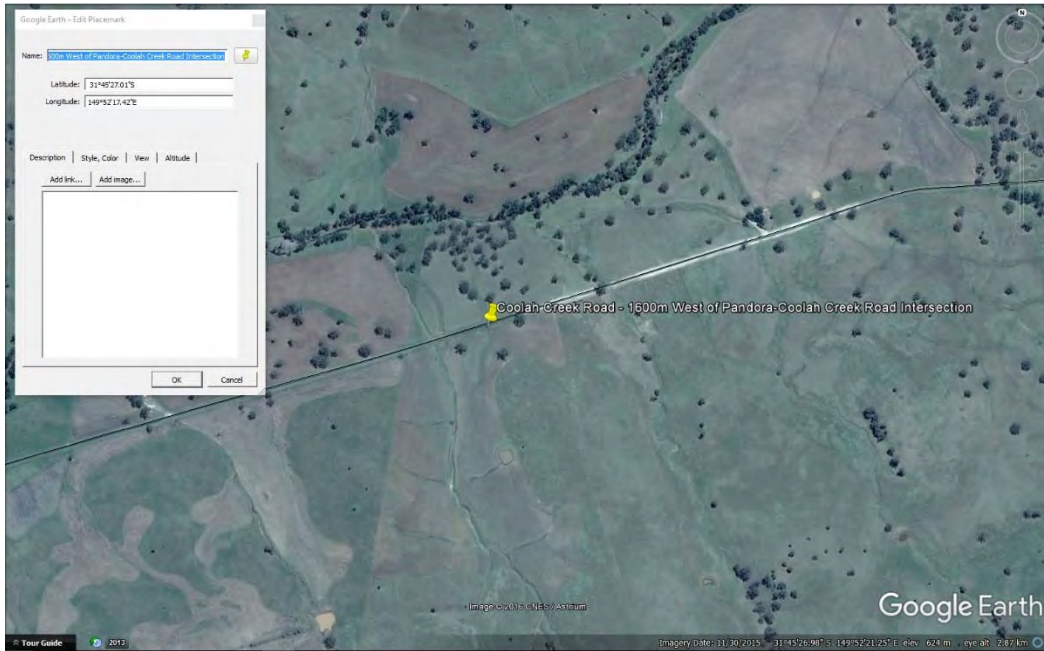


S063 – Location Plan



S063 – View to North

S064 – Coolah Creek Road - 1600m West of Pandora-Coolah Creek Road Intersection
Dual Pipe Culvert of approximately 600mm diameter.
Fair Condition and Serviceable

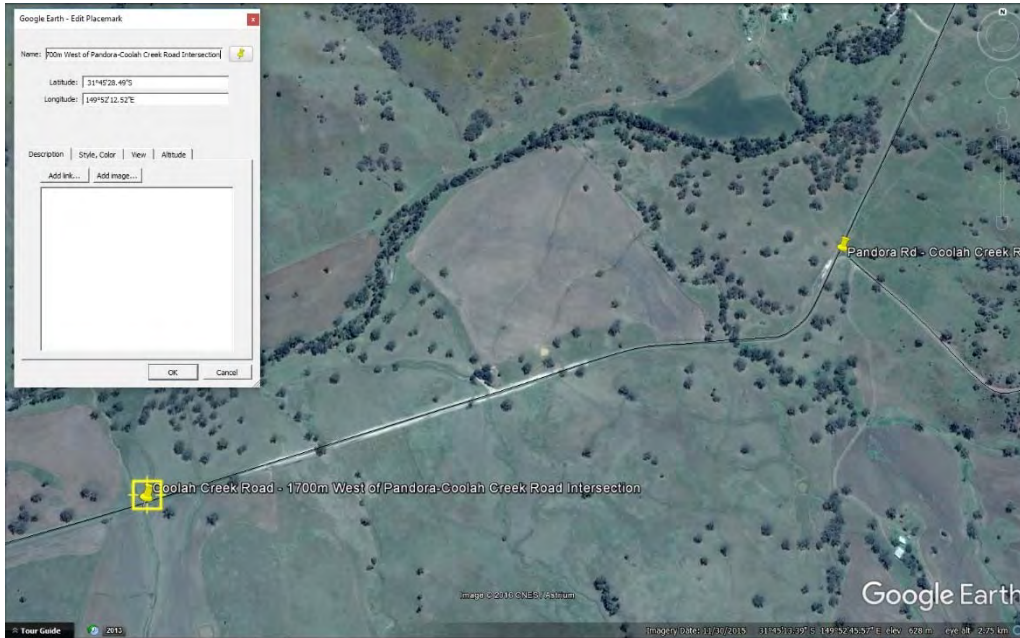


S064 - Location Plan



S064 – View to East

S065 – Coolah Creek Road - 1700m West of Pandora-Coolah Creek Road Intersection
1350mm Pipe Culvert
Moderate Condition and Serviceable



S065- Location Plan



S065 – View to East

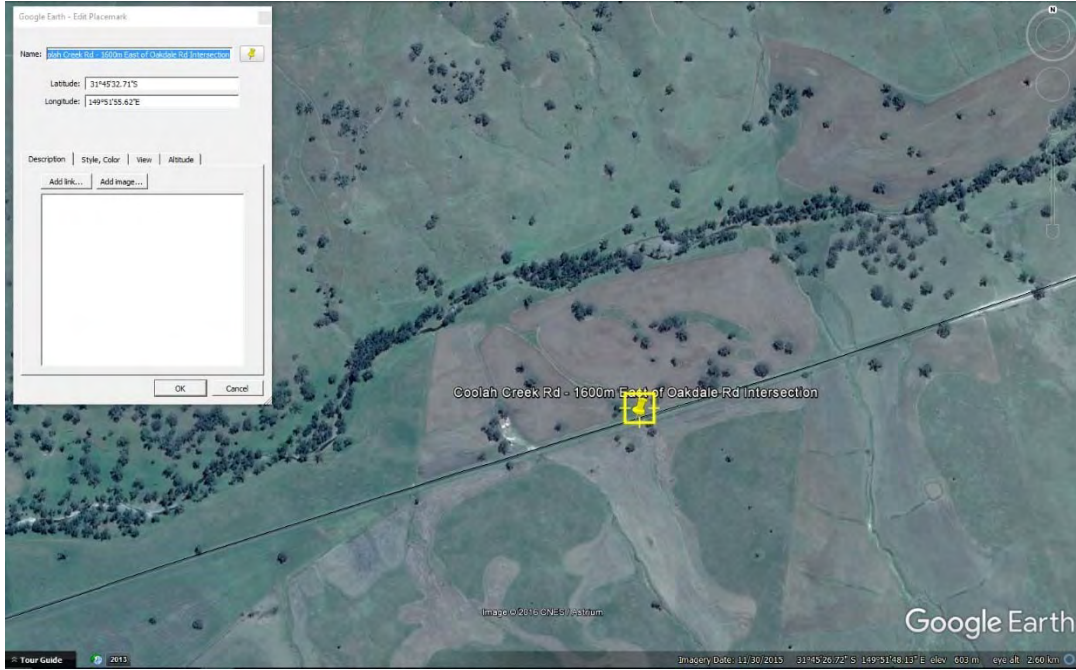


S065 – View to North



S065 – Internal View

S066 – Coolah Creek Rd – 1600m East of Oakdale Rd Intersection
600mm Pipe Culvert
Moderate Condition and Serviceable



S066 – Location Plan

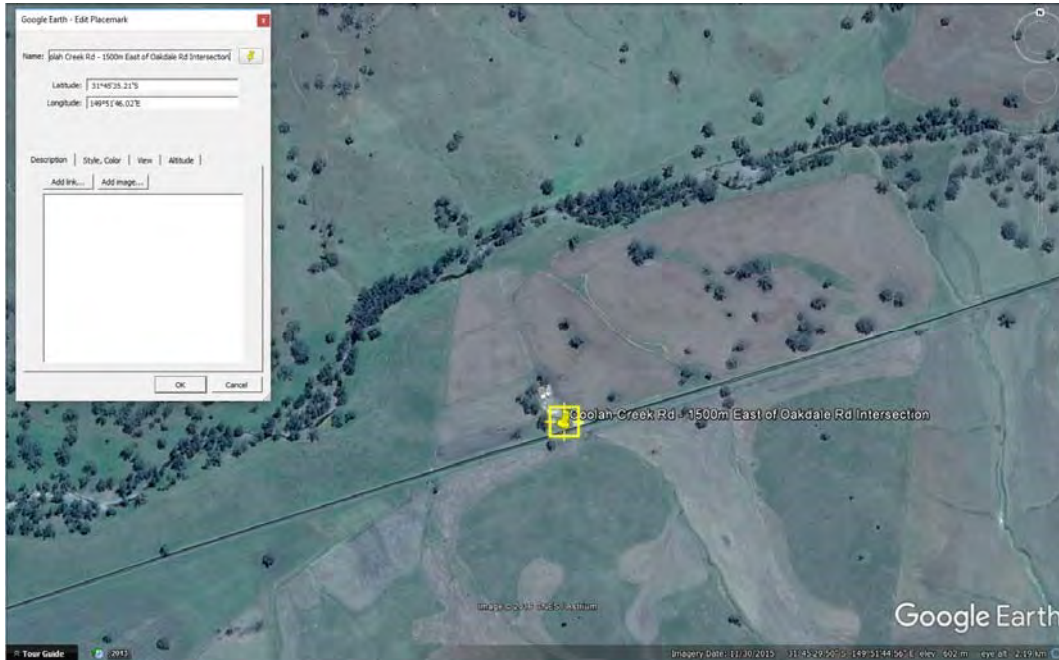


S066 – View to East



S066 – Internal View

S067 – Coolah Creek Rd – 1500m East of Oakdale Rd Intersection
Concrete Causeway, 600mm Pipe Culvert
Fair Condition and Serviceable



S067 – Location Plan

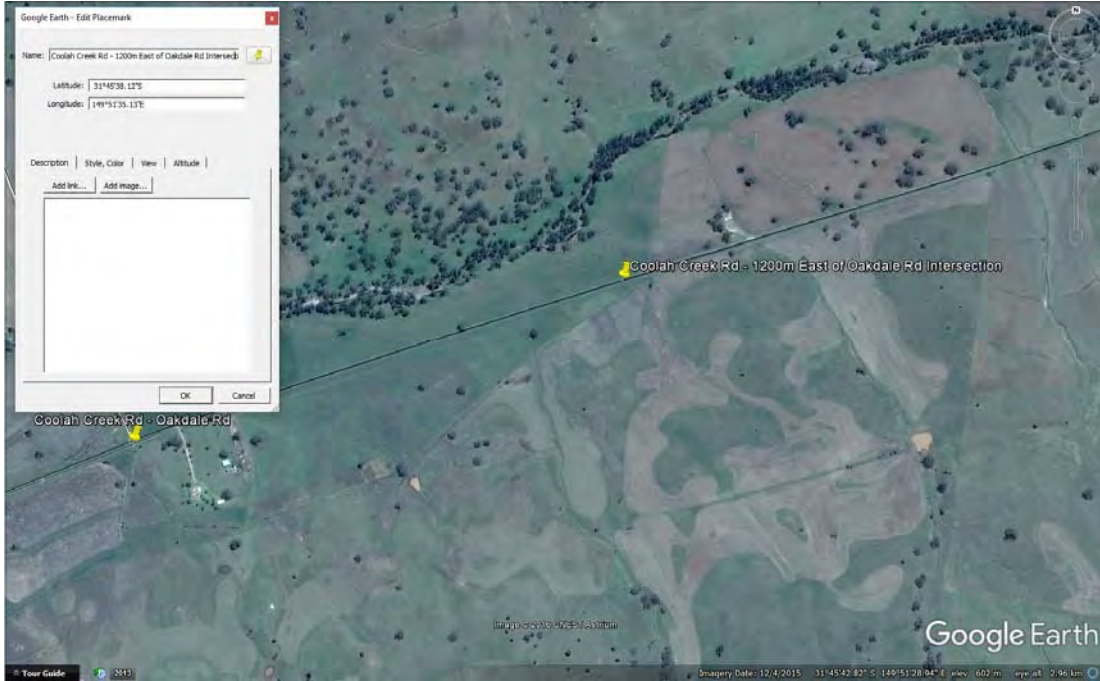


S067 – View to East



S067 – 600mm Pipe Culvert on top of image

S068 – Coolah Creek Rd - 1200m East of Oakdale Rd Intersection
450mm Pipe Culvert
Fair Condition and Serviceable



S068 – Location Plan

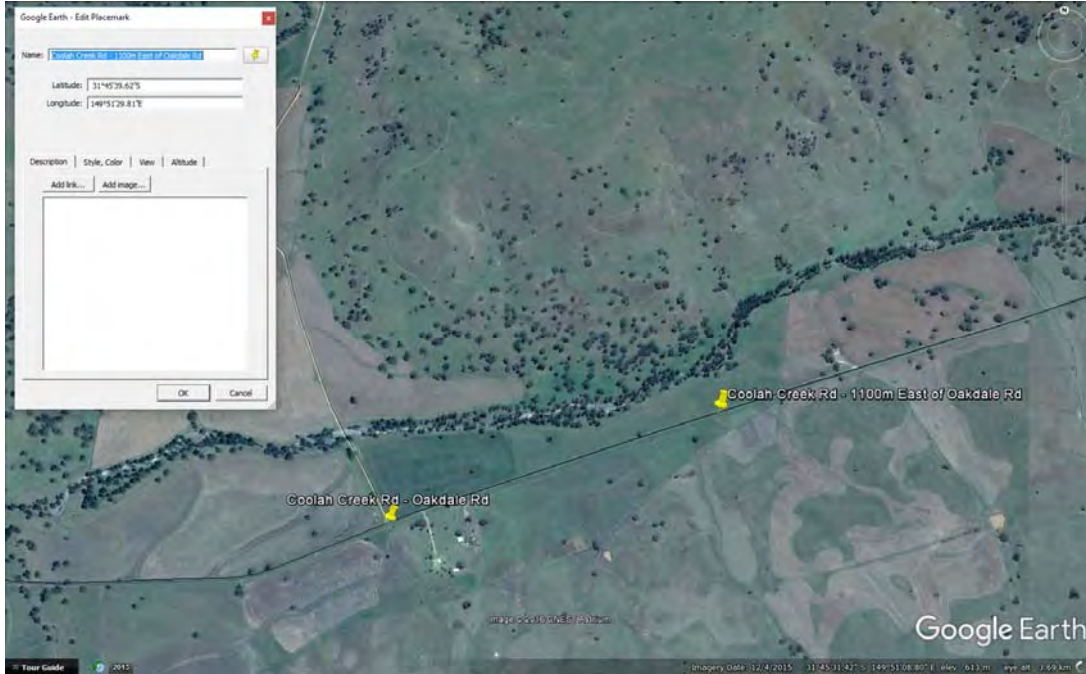


S068 – View to East



S068 – 450mm Pipe Culvert

S069 – Coolah Creek Rd
Dual 450mm Pipe Culvert
Moderate Condition and Serviceable, May require some maintenance



S069 – Location Plan

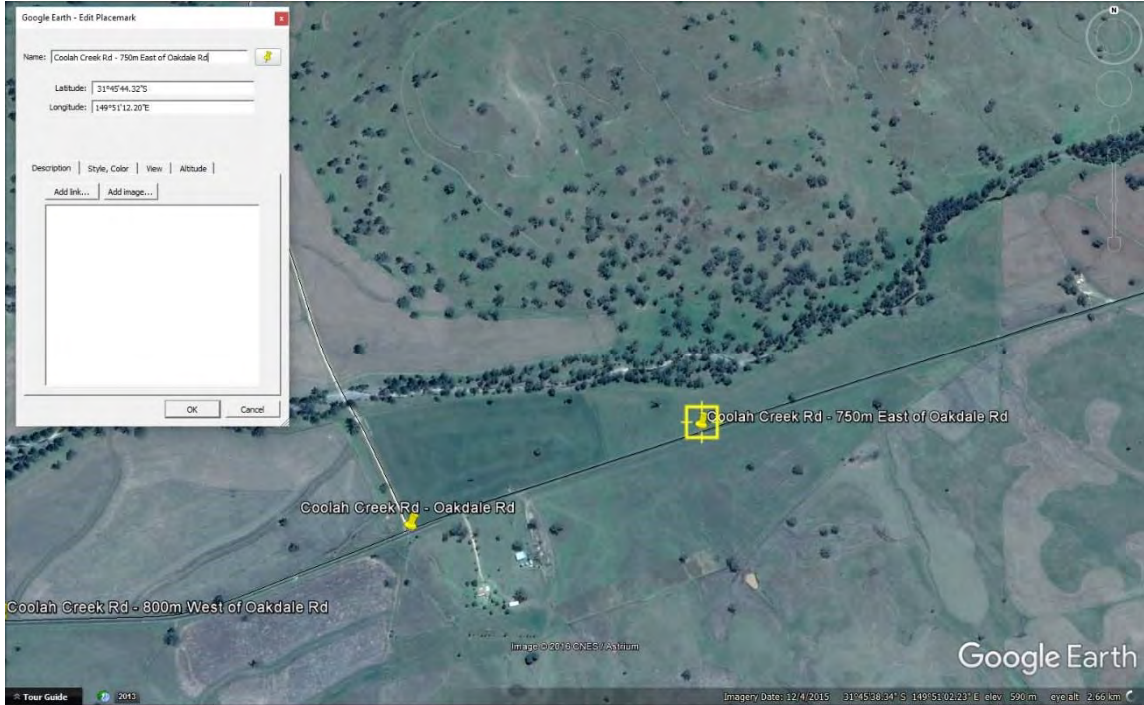


S069 – View to East



S069 - Dual 450mm Pipe Culvert

S070 – Coolah Creek Rd - 750m East of Oakdale Rd
450mm Pipe Culvert
Fair Condition and Serviceable



S070 – Location Plan

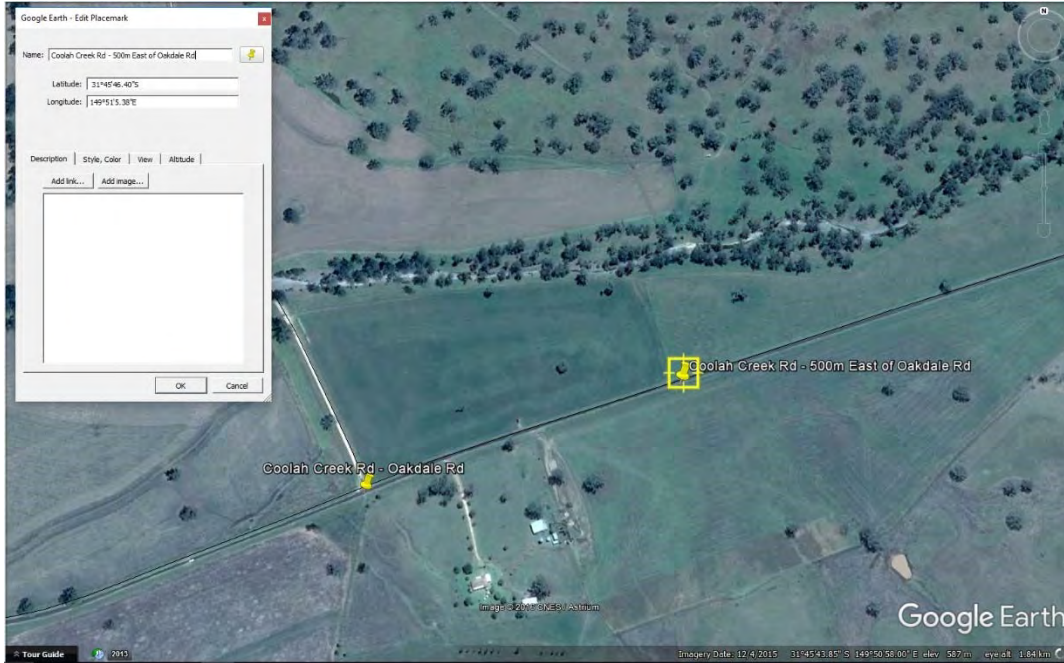


S070 – View to East



S070 - 450mm Pipe Culvert

S071 – Coolah Creek Rd - 500m East of Oakdale
450mm Pipe Culvert
Good Condition and Serviceable



S071 – Location Plan

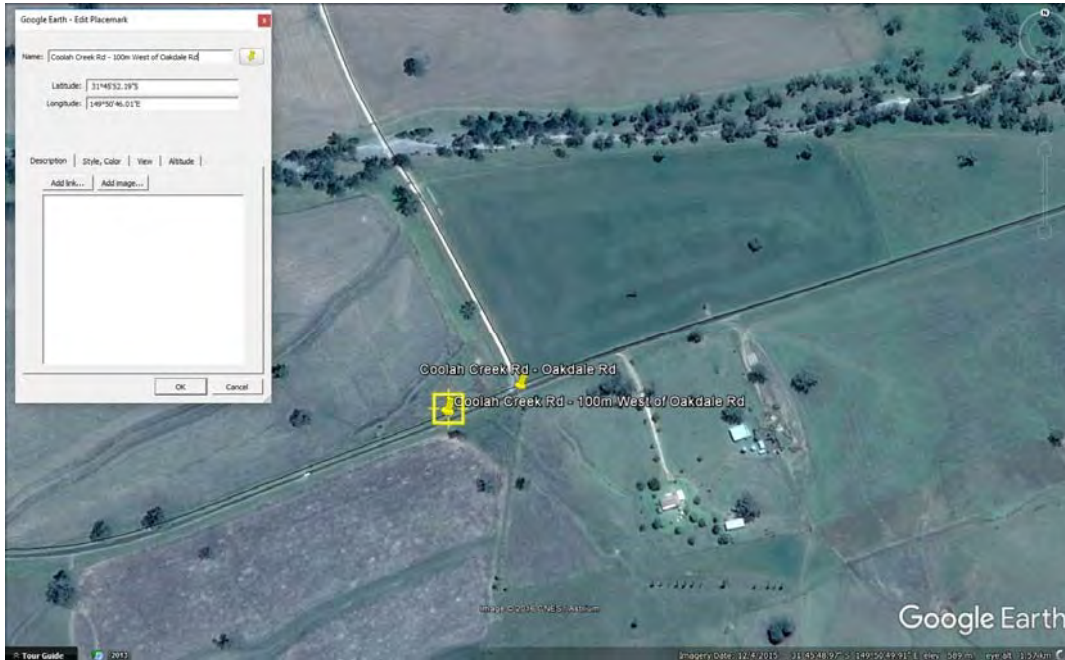


S071 – View to West



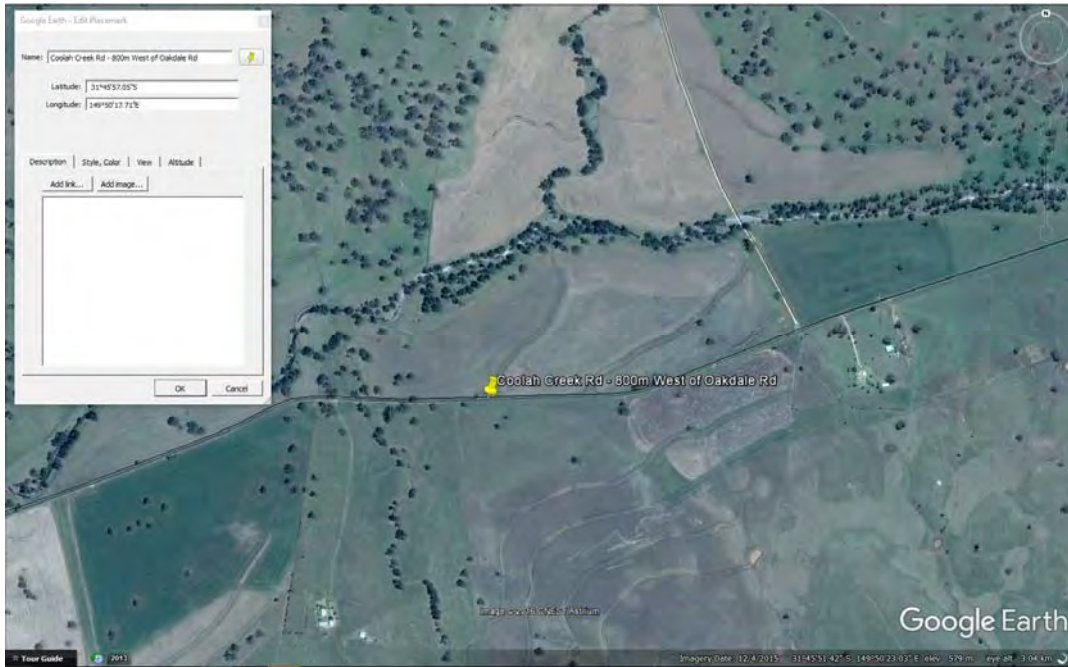
S071 - 450mm Pipe Culvert

S072 – Coolah Creek Rd
Concrete Causeway, ~450mm Pipe Culvert
Causeway inaccessible condition unknown



S072 – Location Plan

S073 – Coolah Creek Rd - 800m West of Oakdale Rd
450mm Pipe Culvert
Fair Condition and Serviceable



S073 – Location Plan

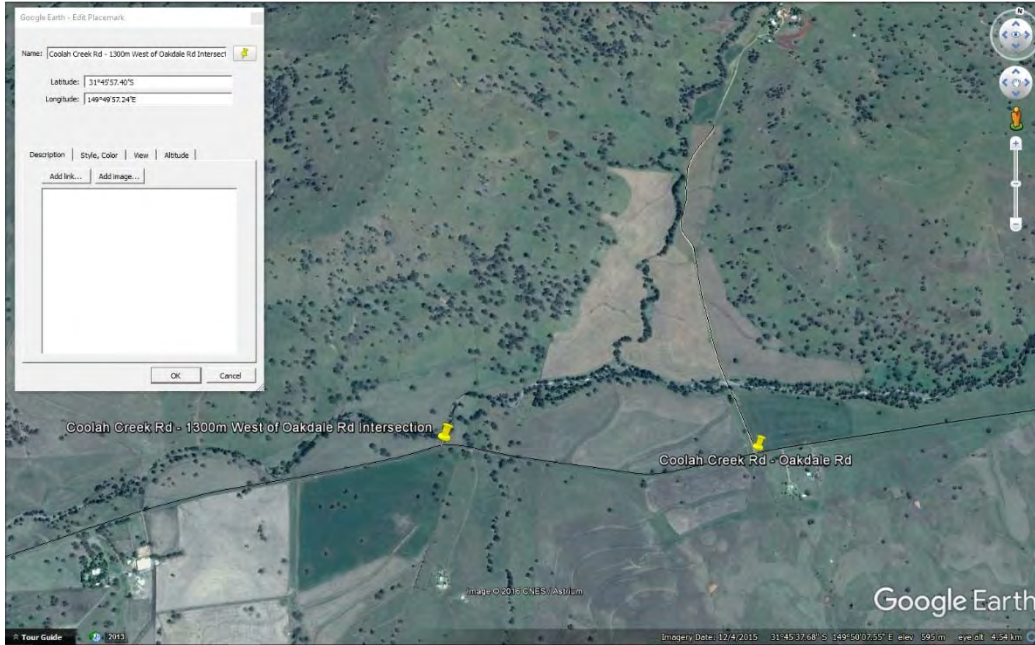


S073 - View to West



S073 – View of 450mm Pipe Culvert

S074 – Coolah Creek Rd - 1300m West of Oakdale Rd Intersection
600mm Pipe Culvert
Fair Condition and Serviceable



S074 – Location Plan



S074 – View to West