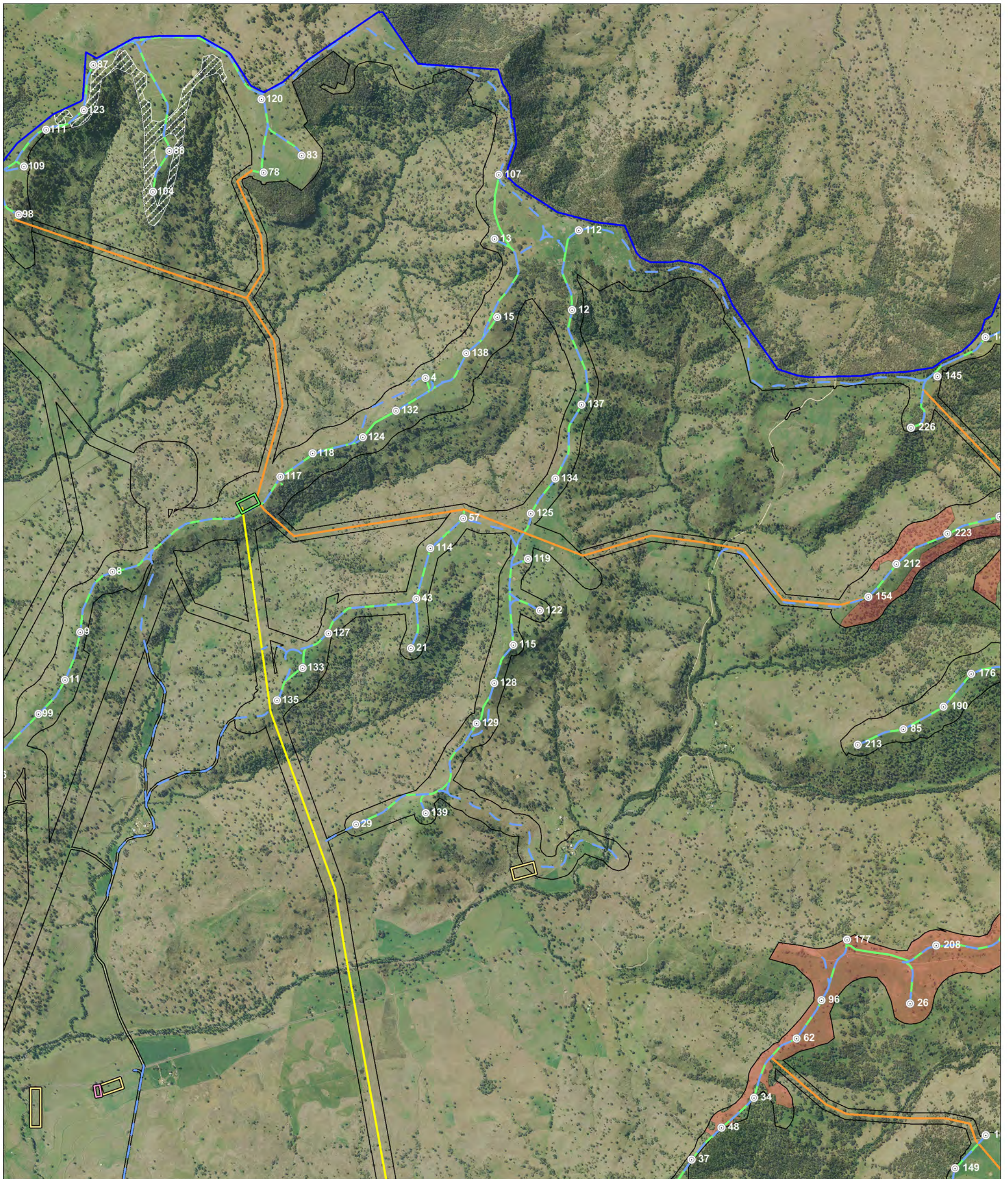


Woodland Bird Habitat and Survey Results Zoom View Map 1



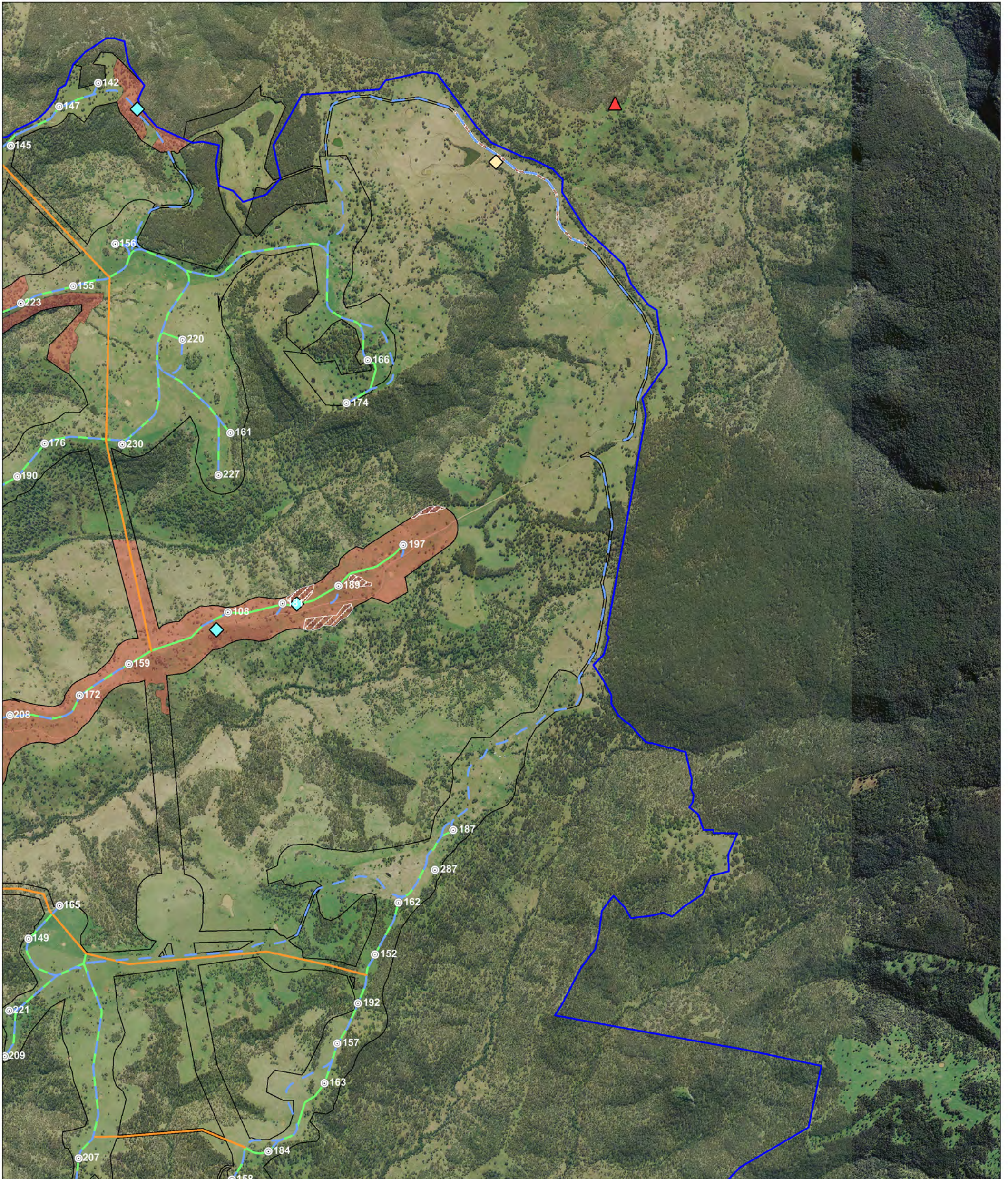
<ul style="list-style-type: none"> Combined survey area Site perimeter Wind Turbine Area Transmission Area Infrastructure Turbine location Access track Underground cabling 	<ul style="list-style-type: none"> OH powerline Transmission line Proposed substation Alternative substation Construction compound Concrete batch plant O&M building 	Habitat features <ul style="list-style-type: none"> Ground-dwelling Mistletoe Mistletoe / Ground-dwelling Hollow quality <ul style="list-style-type: none"> Excellent Good Additional data <ul style="list-style-type: none"> Woodland bird habitat 	Woodland Birds <ul style="list-style-type: none"> Black-chinned honeyeater Brown treecreeper Diamond firetail Grey crowned babbler Painted honeyeater 	<ul style="list-style-type: none"> Scarlet robin Varied sitella Speckled warbler
---	--	--	--	--

0 0.5 1 1.5
Kilometers

A3 @ 1:32,000

Project: Liverpool Range Wind Farm
Produced by: Virgil Robinson
Date: 31 January 2017
Projection: GDA94 MGA Zone 55

Woodland Bird Habitat and Survey Results Zoom View Map 2



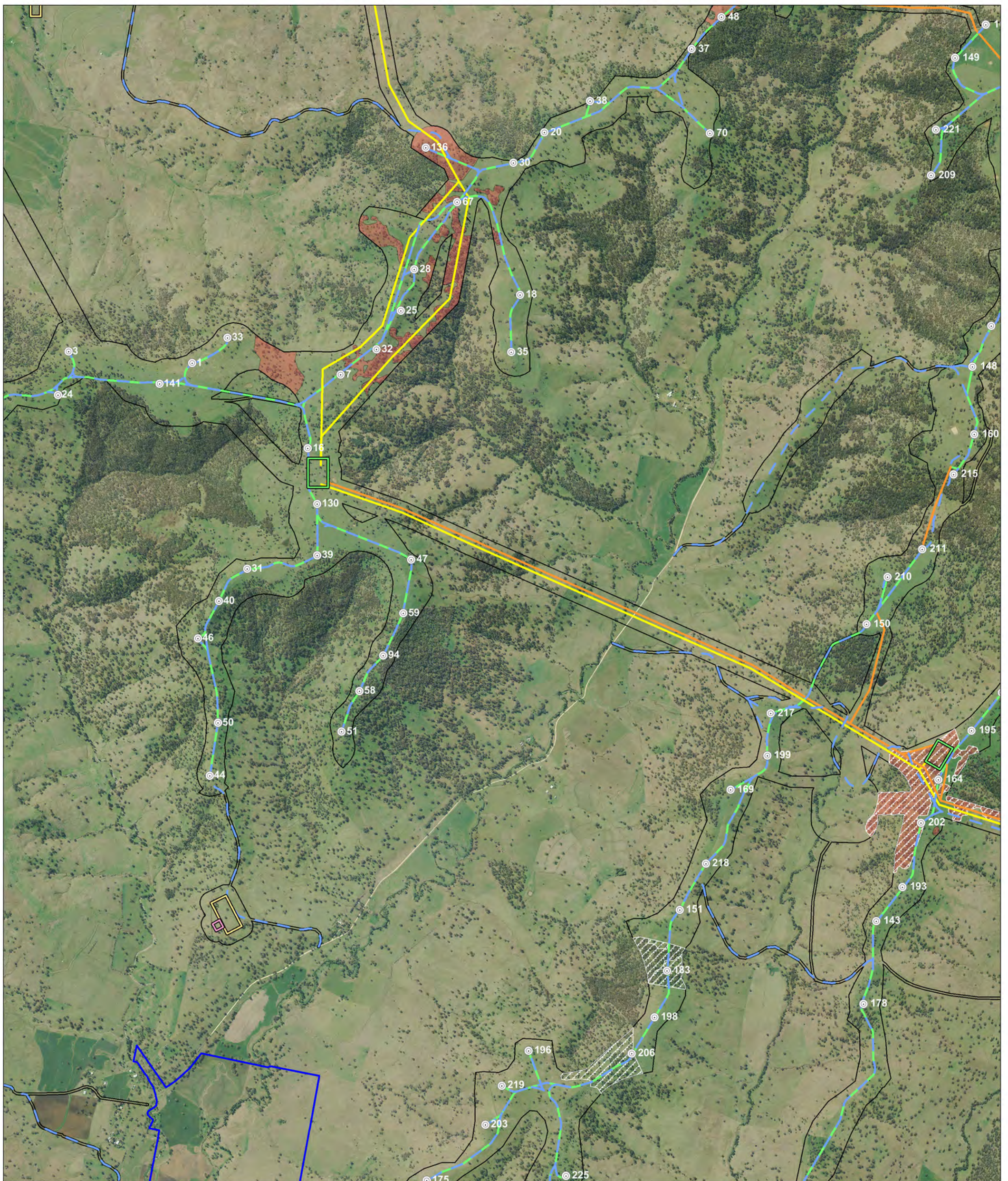
<ul style="list-style-type: none"> Combined survey area Site perimeter Wind Turbine Area Transmission Area Infrastructure Turbine location Access track Underground cabling 	<ul style="list-style-type: none"> OH powerline Transmission line Proposed substation Alternative substation Construction compound Concrete batch plant O&M building 	<ul style="list-style-type: none"> Habitat features Ground-dwelling Mistletoe Mistletoe / Ground-dwelling Hollow quality Excellent Good Additional data Woodland bird habitat 	<ul style="list-style-type: none"> Woodland Birds Black-chinned honeyeater Brown treecreeper Diamond firetail Grey crowned babbler Painted honeyeater 	<ul style="list-style-type: none"> Scarlet robin Varied sittella Speckled warbler
---	--	---	---	---

0 0.5 1 1.5
Kilometers

A3 @ 1:32,000

Project: Liverpool Range Wind Farm
Produced by: Virgil Robinson
Date: 31 January 2017
Projection: GDA94 MGA Zone 55

Woodland Bird Habitat and Survey Results Zoom View Map 3



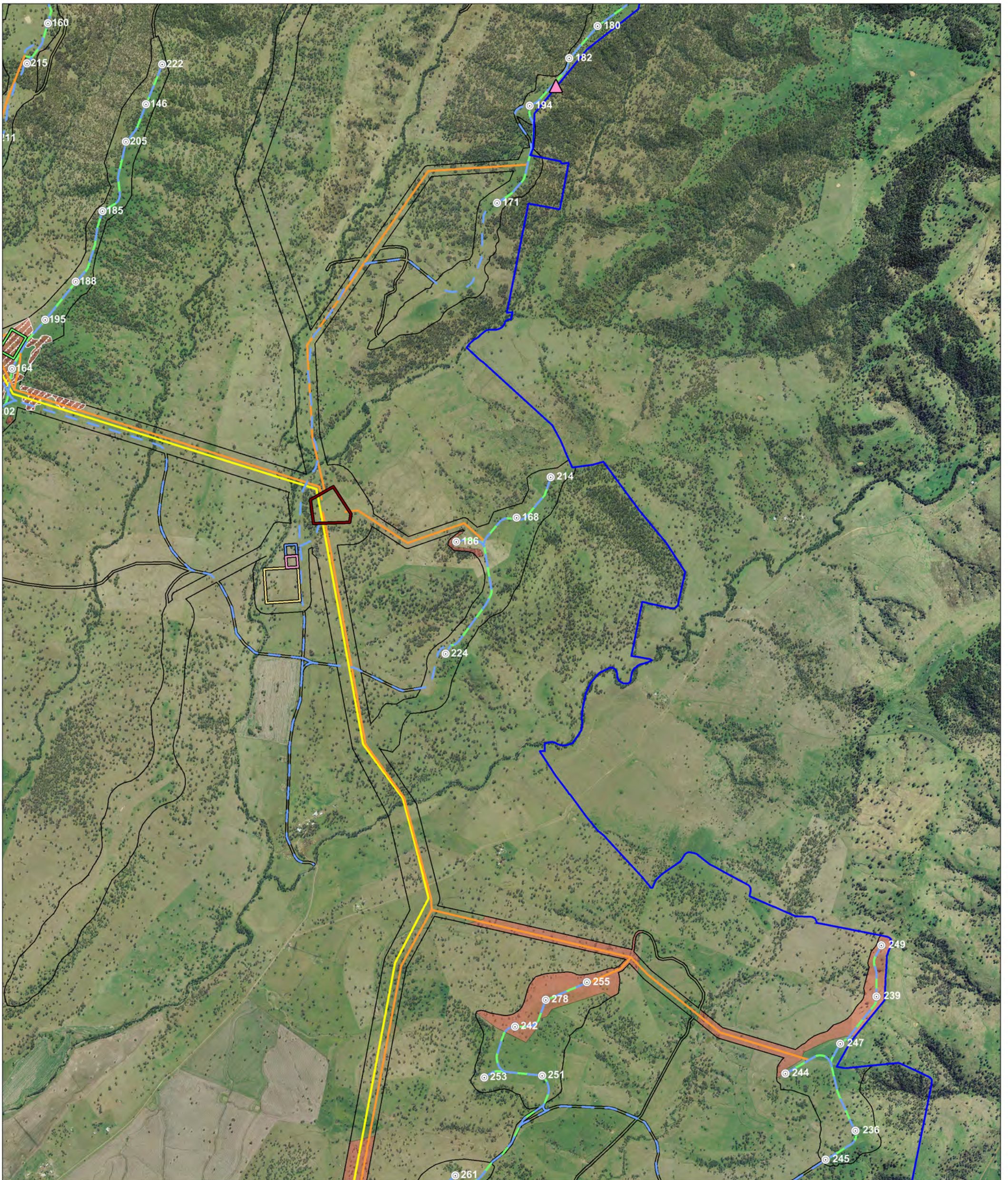
<ul style="list-style-type: none"> Combined survey area Site perimeter Wind Turbine Area Transmission Area Infrastructure Turbine location Access track Underground cabling 	<ul style="list-style-type: none"> OH powerline Transmission line Proposed substation Alternative substation Construction compound Concrete batch plant O&M building 	Habitat features <ul style="list-style-type: none"> Ground-dwelling Mistletoe Mistletoe / Ground-dwelling Hollow quality <ul style="list-style-type: none"> Excellent Good Additional data <ul style="list-style-type: none"> Woodland bird habitat 	Woodland Birds <ul style="list-style-type: none"> Black-chinned honeyeater Brown treecreeper Diamond firetail Grey crowned babbler Painted honeyeater 	<ul style="list-style-type: none"> Scarlet robin Varied sitella Speckled warbler
---	--	--	--	--

0 0.5 1 1.5
Kilometers

A3 @ 1:32,000

Project: Liverpool Range Wind Farm
Produced by: Virgil Robinson
Date: 31 January 2017
Projection: GDA94 MGA Zone 55

Woodland Bird Habitat and Survey Results Zoom View Map 4



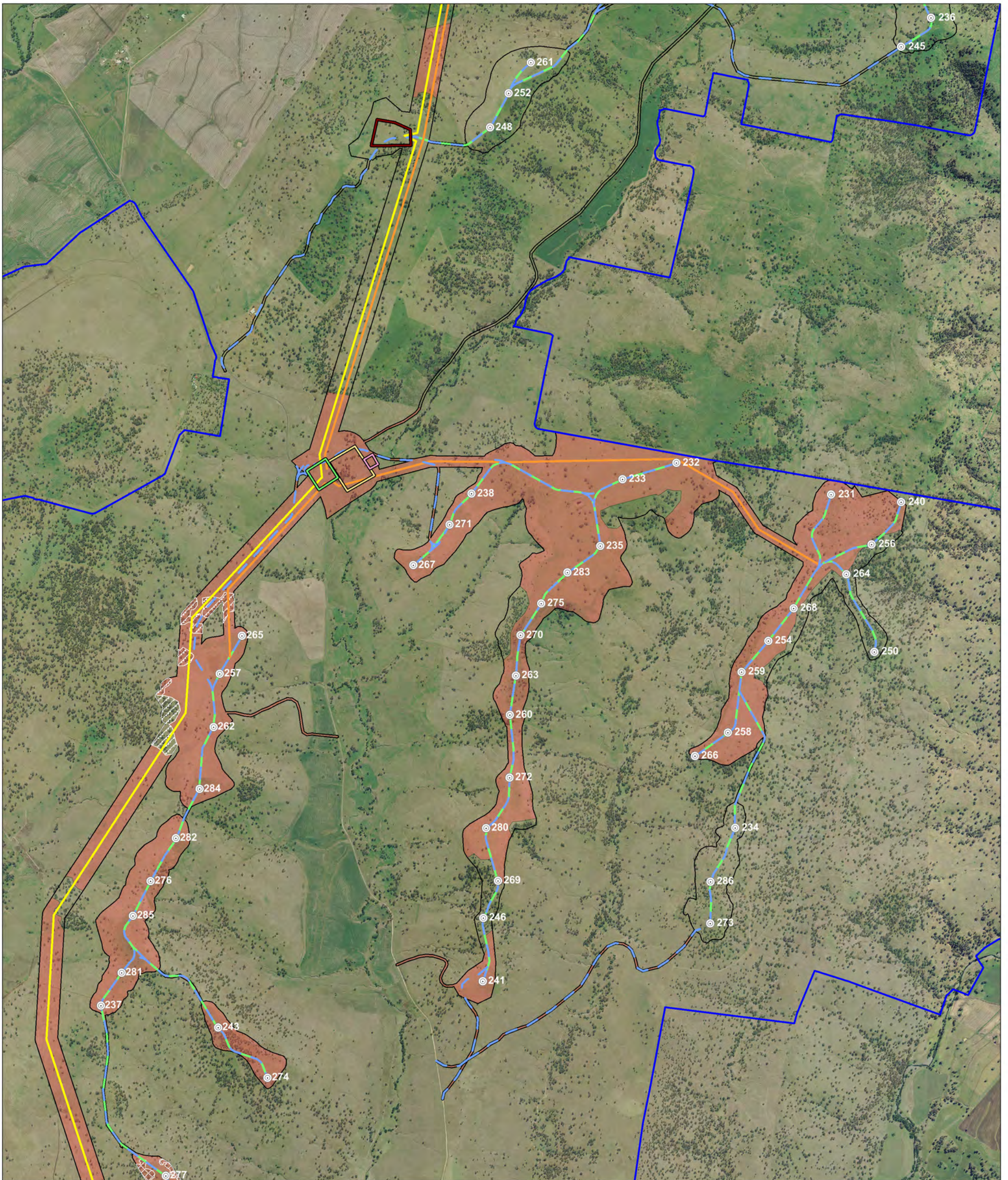
<ul style="list-style-type: none"> Combined survey area Site perimeter Wind Turbine Area Transmission Area Infrastructure Turbine location Access track Underground cabling 	<ul style="list-style-type: none"> OH powerline Transmission line Proposed substation Alternative substation Construction compound Concrete batch plant O&M building 	Habitat features <ul style="list-style-type: none"> Ground-dwelling Mistletoe Mistletoe / Ground-dwelling Hollow quality <ul style="list-style-type: none"> Excellent Good Additional data <ul style="list-style-type: none"> Woodland bird habitat 	Woodland Birds <ul style="list-style-type: none"> Black-chinned honeyeater Brown treecreeper Diamond firetail Grey crowned babbler Painted honeyeater 	<ul style="list-style-type: none"> Scarlet robin Varied sitella Speckled warbler
---	--	--	--	--

0 0.5 1 1.5
Kilometers

A3 @ 1:32,000

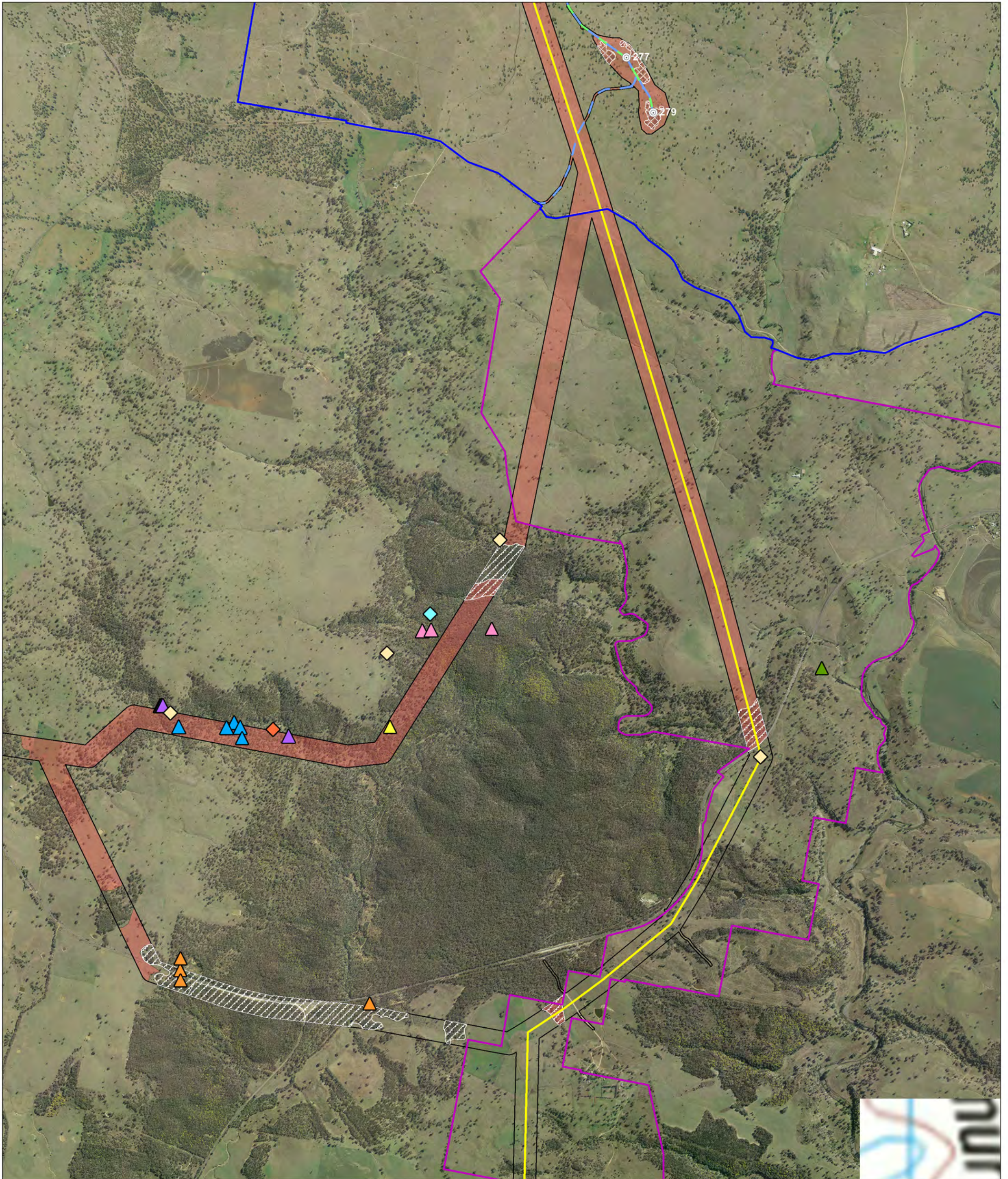
Project: Liverpool Range Wind Farm
Produced by: Virgil Robinson
Date: 31 January 2017
Projection: GDA94 MGA Zone 55

Woodland Bird Habitat and Survey Results Zoom View Map 5



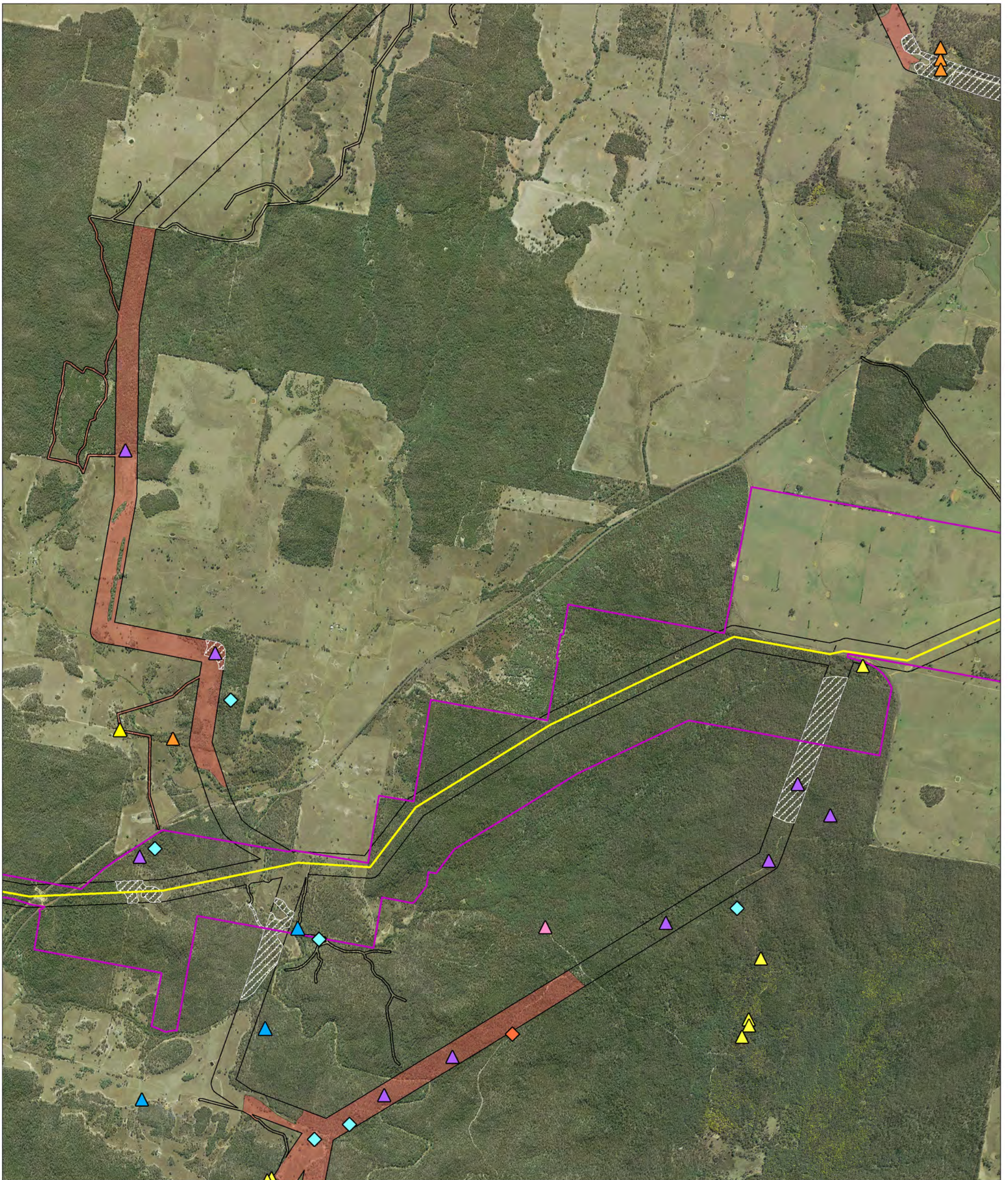
<ul style="list-style-type: none"> Combined survey area Site perimeter Wind Turbine Area Transmission Area Infrastructure Turbine location Access track Underground cabling 	<ul style="list-style-type: none"> OH powerline Transmission line Proposed substation Alternative substation Construction compound Concrete batch plant O&M building 	Habitat features <ul style="list-style-type: none"> Ground-dwelling Mistletoe Mistletoe / Ground-dwelling Hollow quality <ul style="list-style-type: none"> Excellent Good Additional data <ul style="list-style-type: none"> Woodland bird habitat 	Woodland Birds <ul style="list-style-type: none"> Black-chinned honeyeater Brown treecreeper Diamond firetail Grey crowned babbler Painted honeyeater 	<ul style="list-style-type: none"> Scarlet robin Varied sitella Speckled warbler 	<p>0 0.5 1 1.5 Kilometers</p> <p>A3 @ 1:32,000</p> <p>Project: Liverpool Range Wind Farm Produced by: Virgil Robinson Date: 31 January 2017 Projection: GDA94 MGA Zone 55</p>
---	--	--	--	--	---

Woodland Bird Habitat and Survey Results Zoom View Map 6



<ul style="list-style-type: none"> Combined survey area Site perimeter Wind Turbine Area Transmission Area Infrastructure Turbine location Access track Underground cabling 	<ul style="list-style-type: none"> OH powerline Transmission line Proposed substation Alternative substation Construction compound Concrete batch plant O&M building 	<ul style="list-style-type: none"> Habitat features Ground-dwelling Mistletoe Mistletoe / Ground-dwelling Hollow quality Excellent Good Additional data Woodland bird habitat 	<ul style="list-style-type: none"> Woodland Birds Black-chinned honeyeater Brown treecreeper Diamond firetail Grey crowned babbler Painted honeyeater Scarlet robin Varied sitella Speckled warbler 	<p>EPURON</p> <p>0 0.5 1 1.5 Kilometers</p> <p>A3 @ 1:32,000</p> <p>Project: Liverpool Range Wind Farm Produced by: Virgil Robinson Date: 31 January 2017 Projection: GDA94 MGA Zone 55</p>
---	--	---	---	--

Woodland Bird Habitat and Survey Results Zoom View Map 7



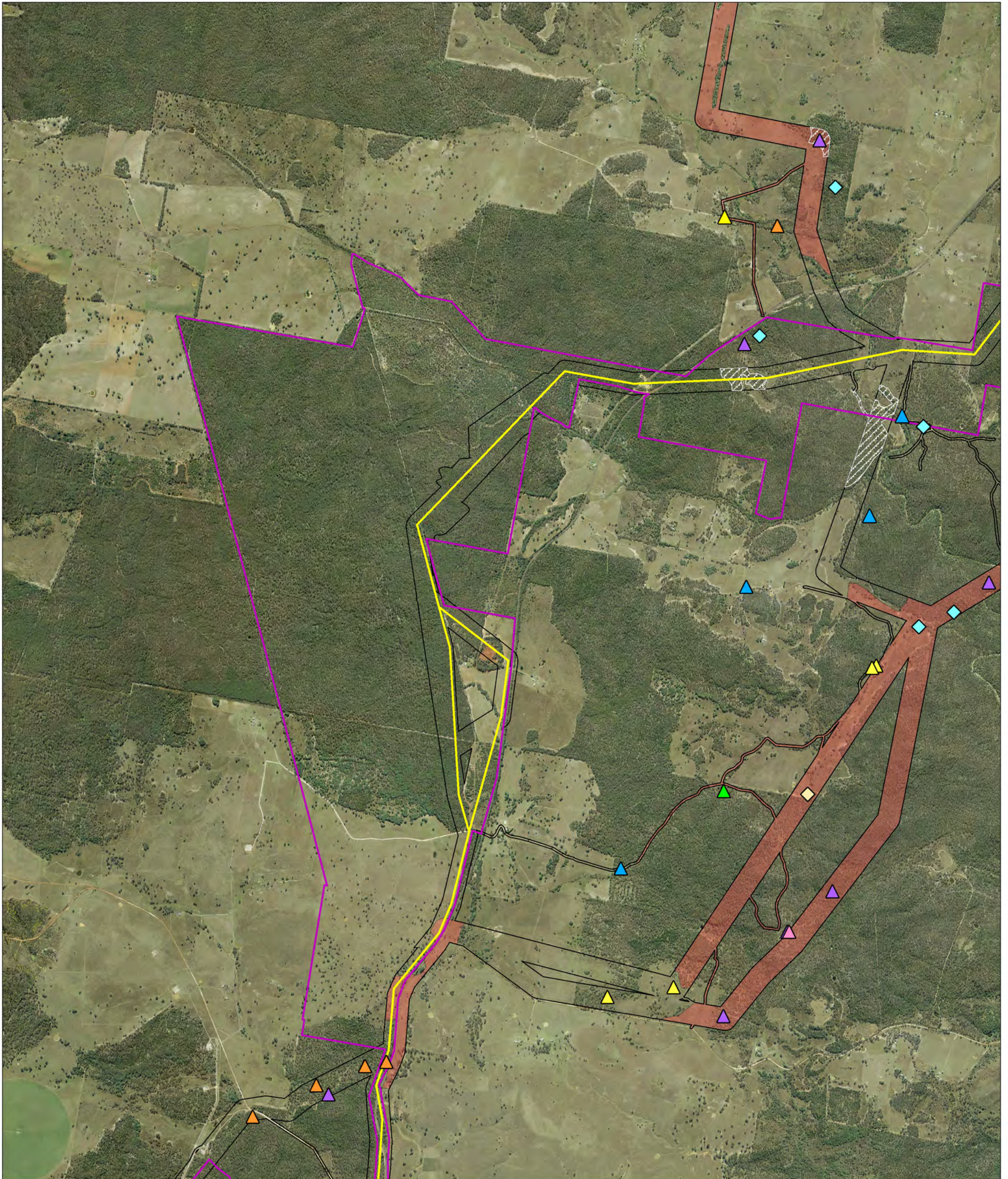
<ul style="list-style-type: none"> Combined survey area Site perimeter Wind Turbine Area Transmission Area Infrastructure Turbine location Access track Underground cabling 	<ul style="list-style-type: none"> OH powerline Transmission line Proposed substation Alternative substation Construction compound Concrete batch plant O&M building 	<ul style="list-style-type: none"> Habitat features Ground-dwelling Mistletoe Mistletoe / Ground-dwelling Hollow quality Excellent Good Additional data Woodland bird habitat 	<ul style="list-style-type: none"> Woodland Birds Black-chinned honeyeater Brown treecreeper Diamond firetail Grey crowned babbler Painted honeyeater Scarlet robin Varied sitella Speckled warbler
---	--	---	---

0 0.5 1 1.5
Kilometers

A3 @ 1:32,000

Project: Liverpool Range Wind Farm
Produced by: Virgil Robinson
Date: 31 January 2017
Projection: GDA94 MGA Zone 55

Woodland Bird Habitat and Survey Results Zoom View Map 8



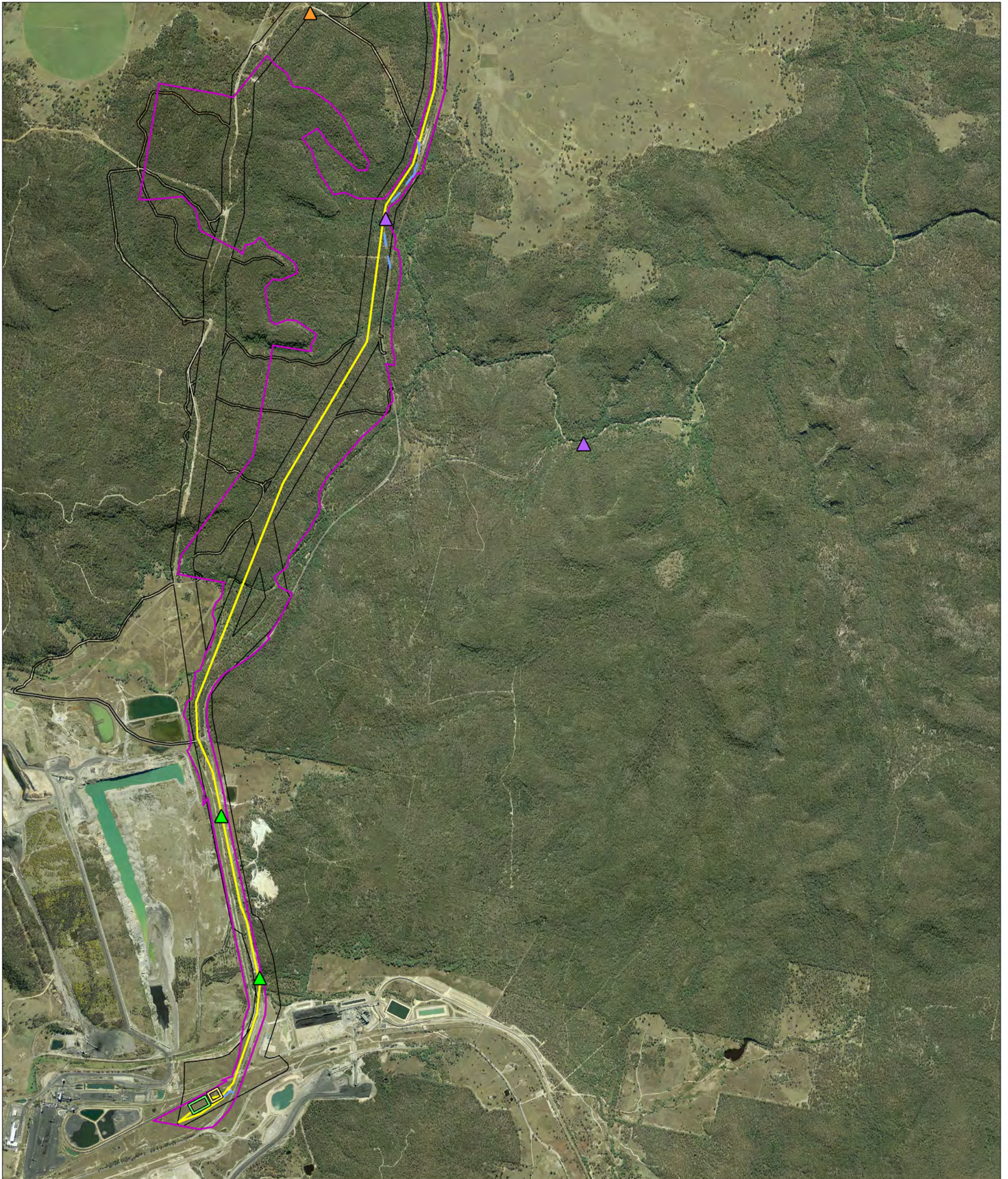
<ul style="list-style-type: none"> Combined survey area Site perimeter Wind Turbine Area Transmission Area Infrastructure Turbine location Access track Underground cabling 	<ul style="list-style-type: none"> OH powerline Transmission line Proposed substation Alternative substation Construction compound Concrete batch plant O&M building 	Habitat features <ul style="list-style-type: none"> Ground-dwelling Mistletoe Mistletoe / Ground-dwelling Hollow quality <ul style="list-style-type: none"> Excellent Good Additional data <ul style="list-style-type: none"> Woodland bird habitat 	Woodland Birds <ul style="list-style-type: none"> Black-chinned honeyeater Brown treecreeper Diamond firetail Grey crowned babbler Painted honeyeater 	<ul style="list-style-type: none"> Scarlet robin Varied sitella Speckled warbler
---	--	--	--	--

0 0.5 1 1.5
Kilometers

A3 @ 1:32,000

Project: Liverpool Range Wind Farm
Produced by: Virgil Robinson
Date: 31 January 2017
Projection: GDA94 MGA Zone 55

Woodland Bird Habitat and Survey Results Zoom View Map 9



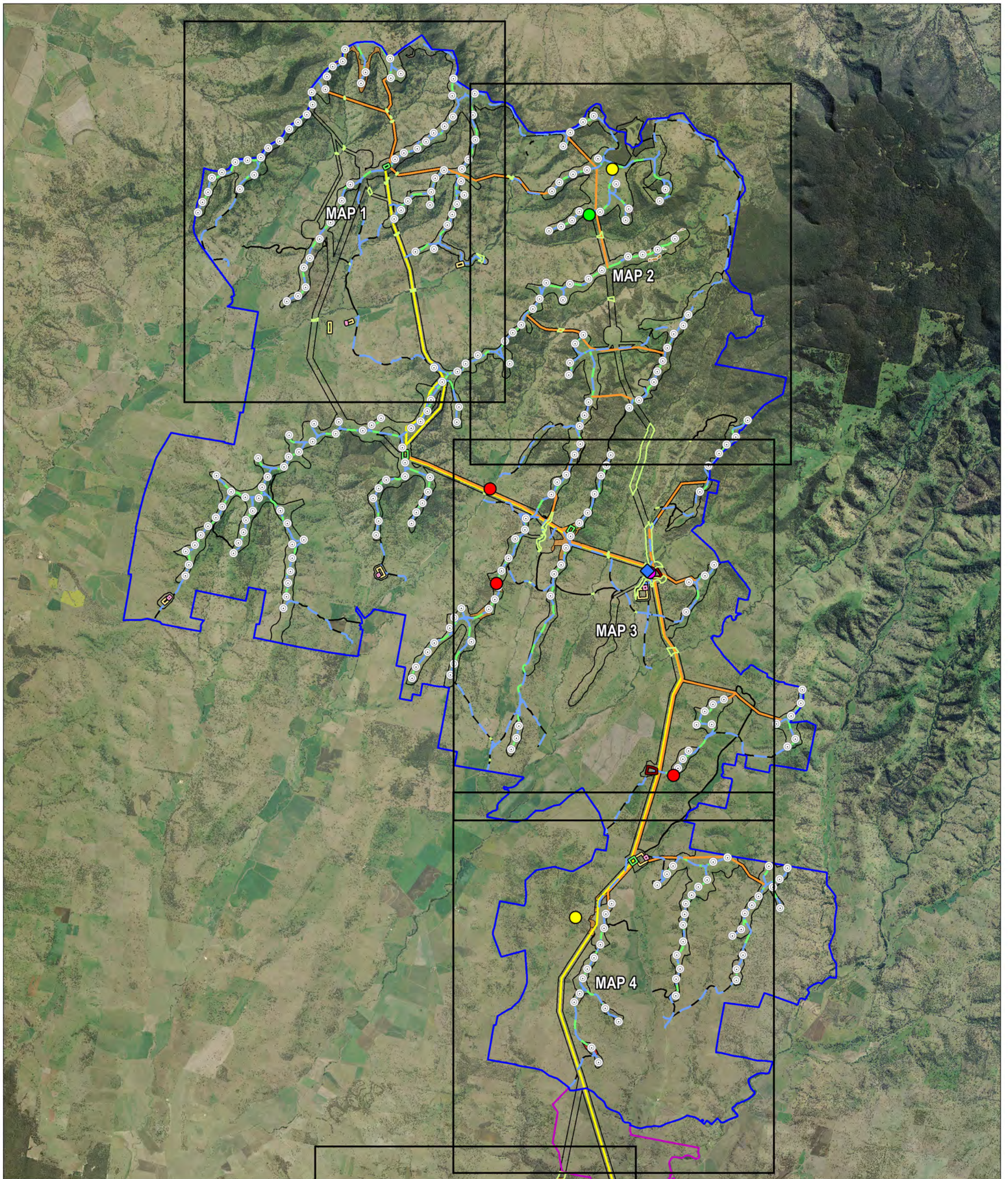
<ul style="list-style-type: none"> Combined survey area Site perimeter Wind Turbine Area Transmission Area Infrastructure Turbine location Access track Underground cabling 	<ul style="list-style-type: none"> OH powerline Transmission line Proposed substation Alternative substation Construction compound Concrete batch plant O&M building 	<ul style="list-style-type: none"> Habitat features Ground-dwelling Mistletoe Mistletoe / Ground-dwelling Hollow quality Excellent Good Additional data Woodland bird habitat 	<ul style="list-style-type: none"> Woodland Birds Black-chinned honeyeater Brown treecreeper Diamond firetail Grey crowned babbler Painted honeyeater 	<ul style="list-style-type: none"> Scarlet robin Varied sitella Speckled warbler
---	--	---	---	--

0 0.5 1 1.5
Kilometers

A3 @ 1:32,000

Project: Liverpool Range Wind Farm
Produced by: Virgil Robinson
Date: 31 January 2017
Projection: GDA94 MGA Zone 55

Mammal Survey Results Northern Overview Map



<ul style="list-style-type: none"> Combined survey area Site perimeter Wind Turbine Area Transmission Area Infrastructure Turbine location Access track Underground cabling 	<ul style="list-style-type: none"> OH powerline Transmission line Proposed substation Alternative substation Construction compound Concrete batch plant O&M building 	<ul style="list-style-type: none"> Hollow quality Excellent Good Overall habitat quality Good Habitat feature Caves 	<ul style="list-style-type: none"> Listed Microbats Common bent-wing bat Corben's long-eared bat Eastern cave bat Large-eared pied bat Yellow-bellied sheath-tail bat Listed Mammals Squirrel glider 	<ul style="list-style-type: none"> Additional data Squirrel glider habitat
---	--	---	--	--

0 1 2 3 4 5
Kilometers

A3 @ 1:120,000

Project: Liverpool Range Wind Farm
Produced by: Virgil Robinson
Date: 31 January 2017
Projection: GDA94 MGA Zone 55