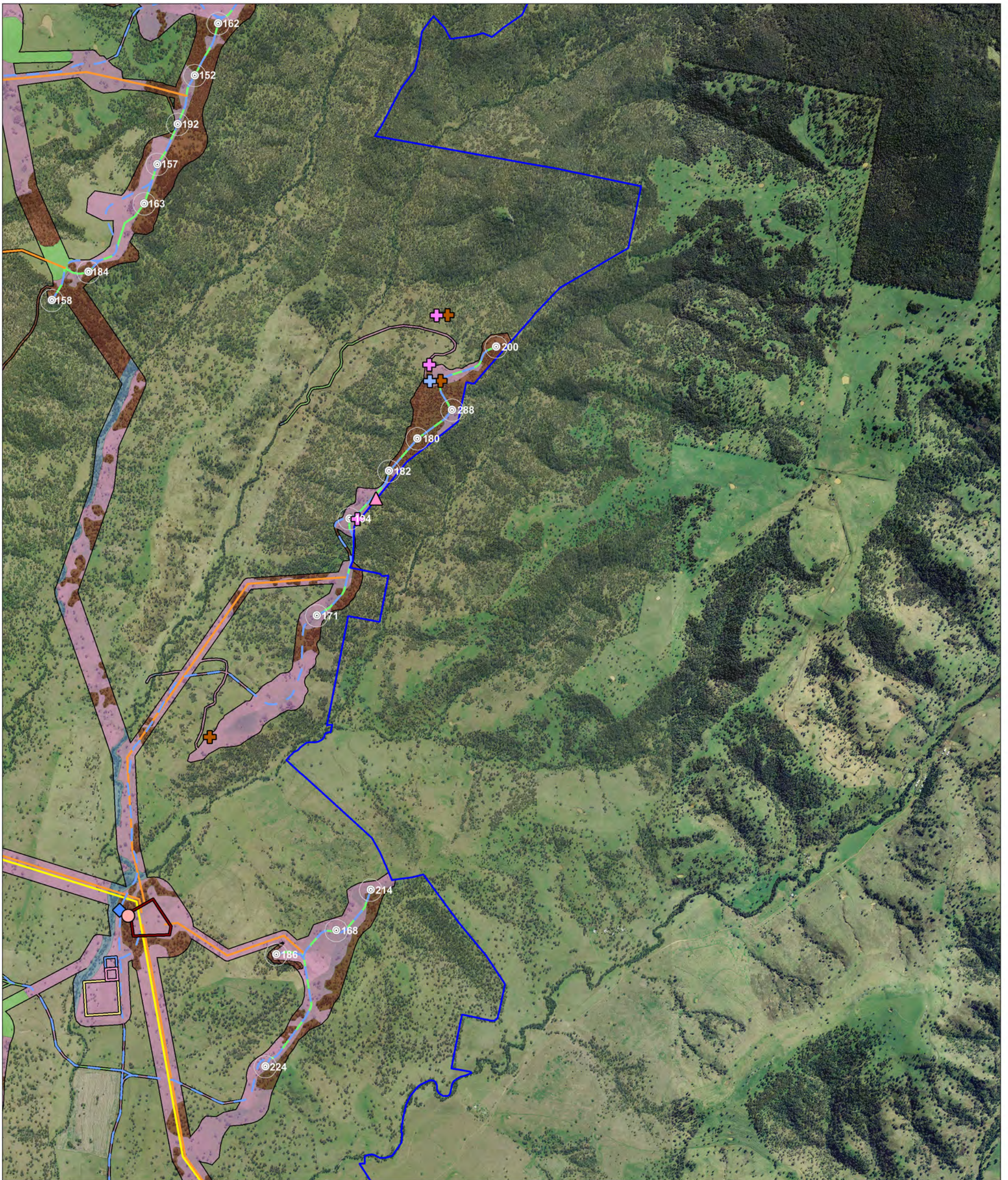
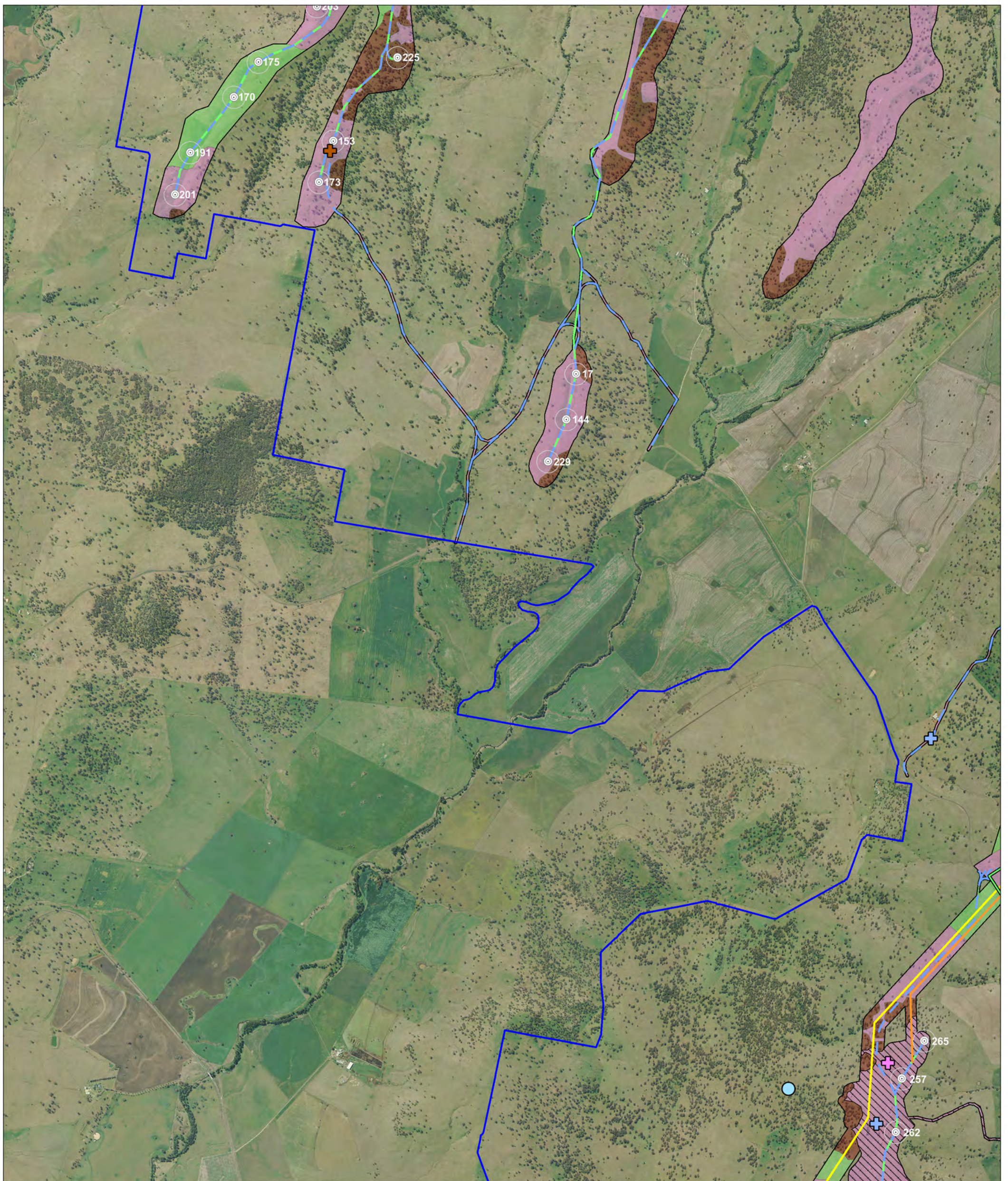


Habitat Type and Fauna Survey Results Zoom View Map 6



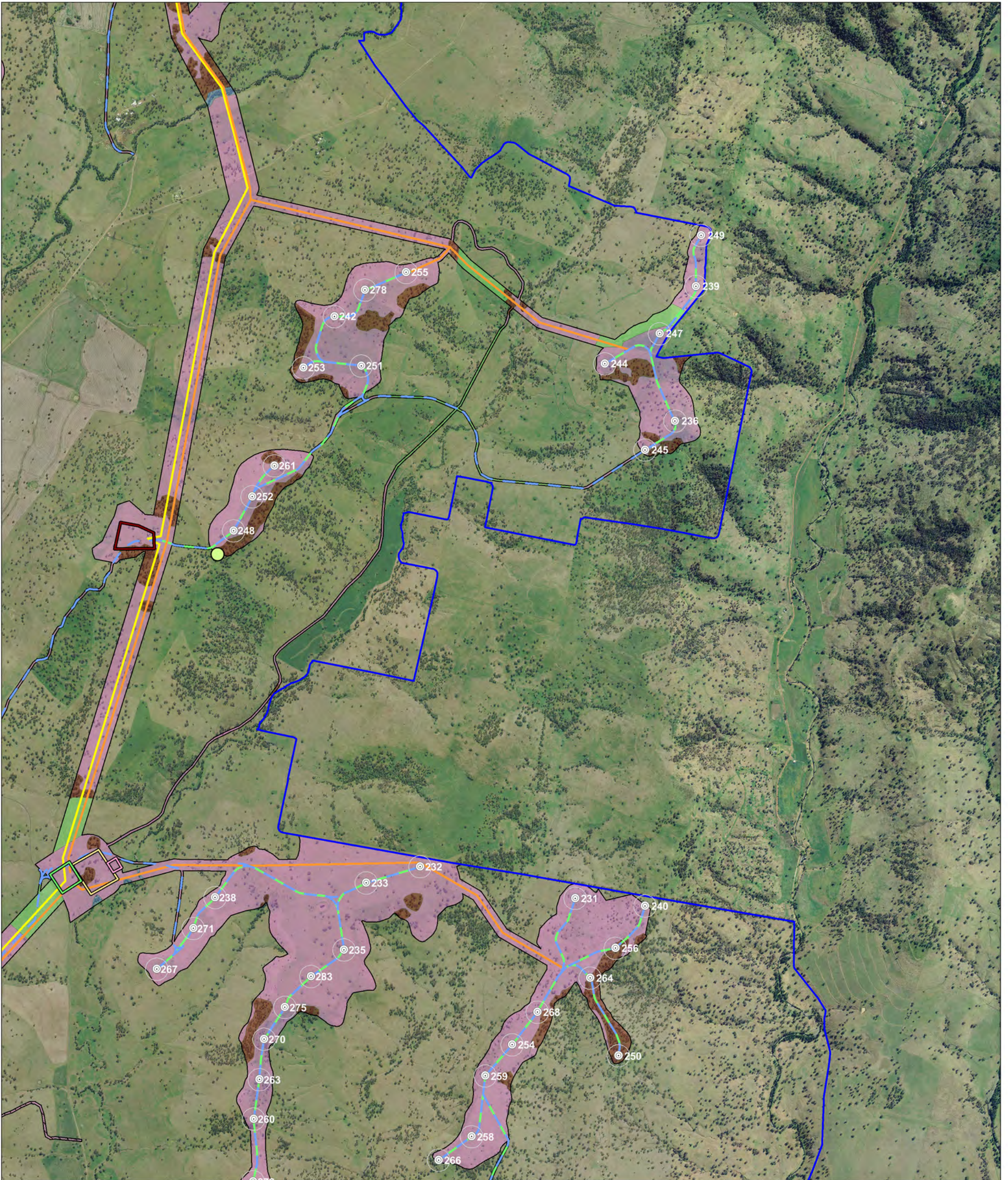
<ul style="list-style-type: none"> Combined survey area 100m turbine buffer Site perimeter Wind Turbine Area Transmission Area Infrastructure Turbine location Access track Underground cabling OH powerline 	<ul style="list-style-type: none"> Transmission line Proposed substation Alternative substation Construction compound Concrete batch plant O&M building Overall habitat quality Good Moderate 	Habitat Type <ul style="list-style-type: none"> Open forest Open pasture Riparian Rocky outcrop Shrubland Woodland Pasture with scattered trees 	Listed Birds <ul style="list-style-type: none"> Black-chinned honeyeater Brown treecreeper Diamond firetail Glossy black cockatoo (feed sign) Glossy black-cockatoo Grey crowned babbler Painted honeyeater Scarlet robin Speckled warbler Square-tailed kite (nest) Varied sitella Powerful owl Rainbow Bee Eater 	Listed Mammals <ul style="list-style-type: none"> Squirrel glider Common bent-wing bat Corben's long-eared bat Eastern cave bat Large-eared pied bat Yellow-bellied sheath-tail bat 	Listed Microbats <ul style="list-style-type: none"> Common bent-wing bat Corben's long-eared bat Eastern cave bat Large-eared pied bat Yellow-bellied sheath-tail bat 	Raptors <ul style="list-style-type: none"> Brown falcon Whistling kite Brown Goshawk Nankeen Kestrel Wedge-tailed Eagle Wedge-tailed eagle (nest) Australian hobby Black-shouldered kite 	<p>0 0.5 1 1.5 Kilometers</p> <p>A3 @ 1:32,000</p> <p>Project: Liverpool Range Wind Farm Produced by: Virgil Robinson Date: 31 January 2017 Projection: GDA94 MGA Zone 55</p>
--	--	---	--	--	---	---	---

Habitat Type and Fauna Survey Results Zoom View Map 7



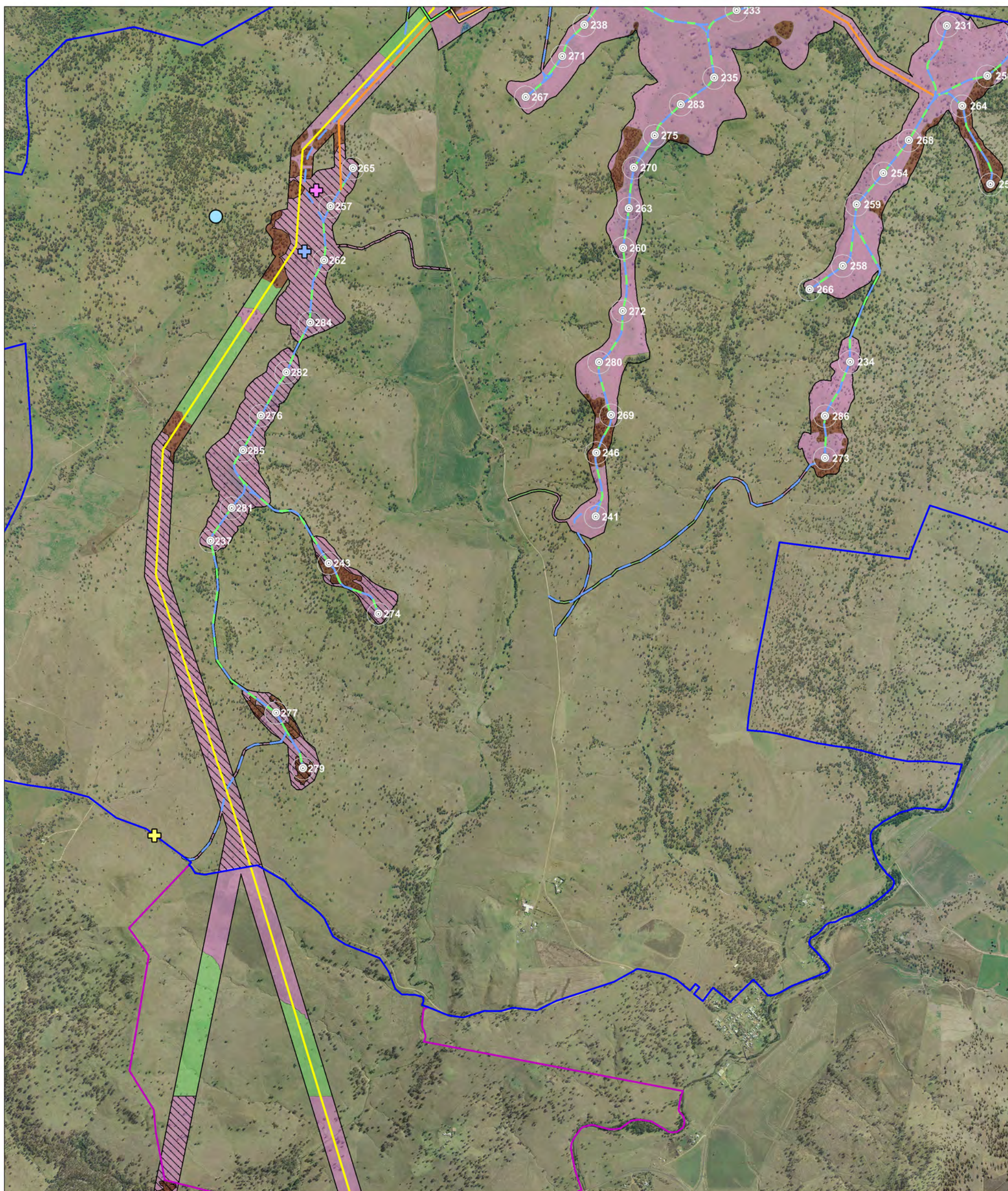
<ul style="list-style-type: none"> Combined survey area 100m turbine buffer Site perimeter Wind Turbine Area Transmission Area Infrastructure Turbine location Access track Underground cabling OH powerline 	<ul style="list-style-type: none"> Transmission line Proposed substation Alternative substation Construction compound Concrete batch plant O&M building Overall habitat quality Good Moderate 	<p>Habitat Type</p> <ul style="list-style-type: none"> Open forest Open pasture Riparian Rocky outcrop Shrubland Woodland Pasture with scattered trees 	<p>Listed Birds</p> <ul style="list-style-type: none"> ▲ Black-chinned honeyeater ▲ Brown treecreeper ▲ Diamond firetail ▲ Glossy black cockatoo (feed sign) ▲ Glossy black cockatoo ▲ Grey crowned babbler ▲ Painted honeyeater ▲ Scarlet robin ▲ Speckled warbler ▲ Square-tailed kite (nest) ▲ Varied sitella ▲ Powerful owl ▲ Rainbow Bee Eater 	<p>Listed Mammals</p> <ul style="list-style-type: none"> ◆ Squirrel glider ● Common bent-wing bat ● Corben's long-eared bat ● Eastern cave bat ● Large-eared pied bat ● Yellow-bellied sheath-tail bat 	<p>Raptors</p> <ul style="list-style-type: none"> + Brown Goshawk + Nankeen Kestrel + Wedge-tailed Eagle + Wedge-tailed eagle (nest) + Australian hobby + Black-shouldered kite 	<ul style="list-style-type: none"> + Brown falcon + Whistling kite 	<p>EPURON</p> <p>0 0.5 1 1.5 Kilometers</p> <p>A3 @ 1:32,000</p> <p>Project: Liverpool Range Wind Farm Produced by: Virgil Robinson Date: 31 January 2017 Projection: GDA94 MGA Zone 55</p>
--	--	--	--	--	---	--	--

Habitat Type and Fauna Survey Results Zoom View Map 8



<ul style="list-style-type: none"> Combined survey area 100m turbine buffer Site perimeter Wind Turbine Area Transmission Area Infrastructure Turbine location Access track Underground cabling OH powerline 	<ul style="list-style-type: none"> Transmission line Proposed substation Alternative substation Construction compound Concrete batch plant O&M building Overall habitat quality Good Moderate 	<p>Habitat Type</p> <ul style="list-style-type: none"> Open forest Open pasture Riparian Rocky outcrop Shrubland Woodland Pasture with scattered trees 	<p>Listed Birds</p> <ul style="list-style-type: none"> ▲ Black-chinned honeyeater ▲ Brown treecreeper ▲ Diamond firetail ▲ Glossy black cockatoo (feed sign) ▲ Glossy black-cockatoo ▲ Grey crowned babbler ▲ Painted honeyeater ▲ Scarlet robin ▲ Speckled warbler ▲ Square-tailed kite (nest) ▲ Varied sitella ▲ Powerful owl ▲ Rainbow Bee Eater 	<p>Listed Mammals</p> <ul style="list-style-type: none"> ◆ Squirrel glider ● Common bent-wing bat ● Corben's long-eared bat ● Eastern cave bat ● Large-eared pied bat ● Yellow-bellied sheath-tail bat 	<p>Raptors</p> <ul style="list-style-type: none"> + Brown falcon + Whistling kite + Brown Goshawk + Nankeen Kestrel + Wedge-tailed Eagle + Wedge-tailed eagle (nest) + Australian hobby + Black-shouldered kite 	<p>EPURON</p> <p>0 0.5 1 1.5 Kilometers</p> <p>A3 @ 1:32,000</p> <p>Project: Liverpool Range Wind Farm Produced by: Virgil Robinson Date: 31 January 2017 Projection: GDA94 MGA Zone 55</p>
---	---	---	--	---	--	--

Habitat Type and Fauna Survey Results Zoom View Map 9



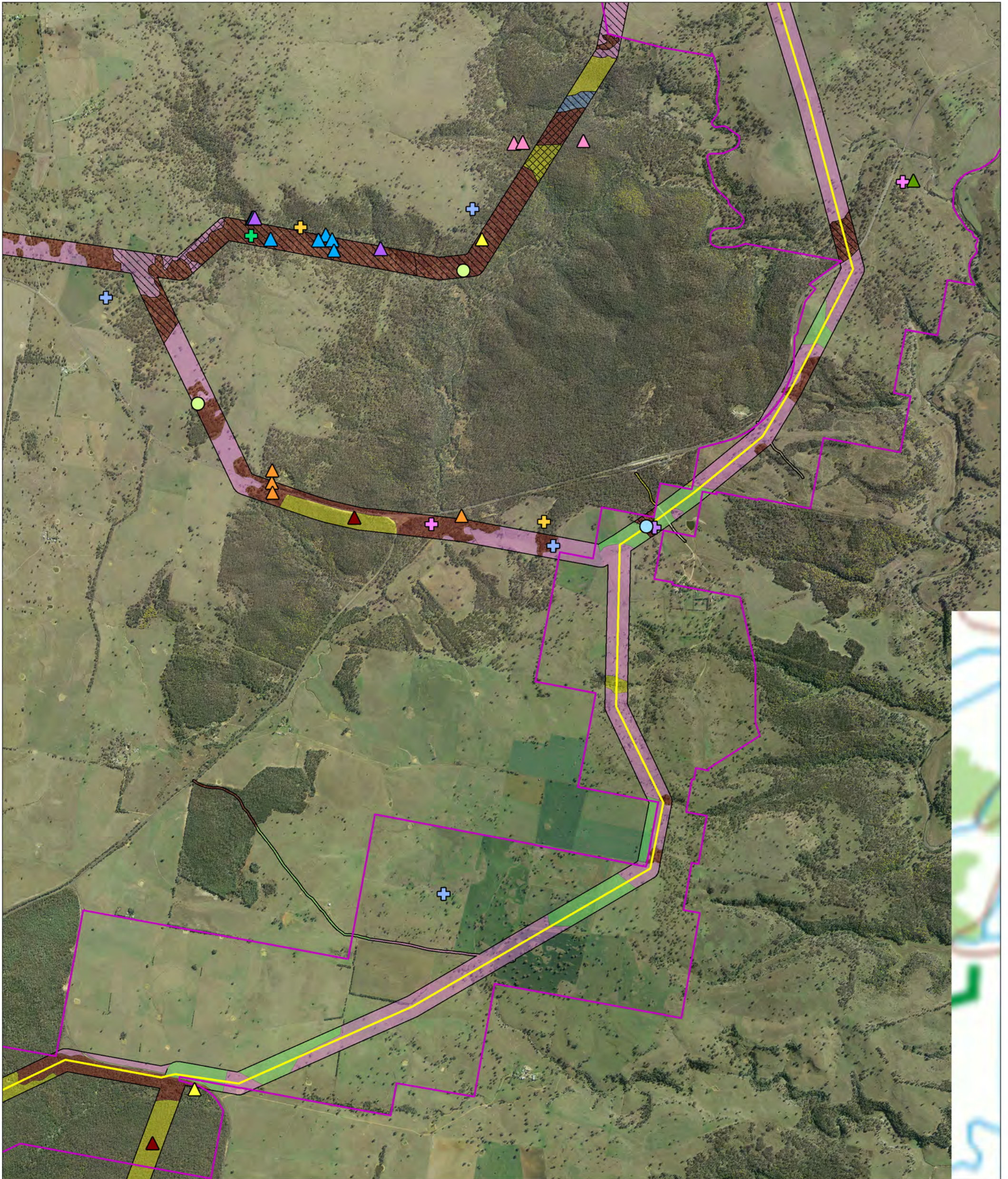
<ul style="list-style-type: none"> Combined survey area 100m turbine buffer Site perimeter Wind Turbine Area Transmission Area Infrastructure Turbine location Access track Underground cabling OH powerline 	<ul style="list-style-type: none"> Transmission line Proposed substation Alternative substation Construction compound Concrete batch plant O&M building Overall habitat quality Good Moderate 	Habitat Type <ul style="list-style-type: none"> Open forest Open pasture Riparian Rocky outcrop Shrubland Woodland Pasture with scattered trees 	Listed Birds <ul style="list-style-type: none"> Black-chinned honeyeater Brown treecreeper Diamond firetail Glossy black cockatoo (feed sign) Glossy black-cockatoo Grey crowned babbler Painted honeyeater Scarlet robin Speckled warbler Square-tailed kite (nest) Varied sitella Powerful owl Rainbow Bee Eater 	Listed Mammals <ul style="list-style-type: none"> Squirrel glider Common bent-wing bat Corben's long-eared bat Eastern cave bat Large-eared pied bat Yellow-bellied sheath-tail bat 	Listed Microbats <ul style="list-style-type: none"> Common bent-wing bat Corben's long-eared bat Eastern cave bat Large-eared pied bat Yellow-bellied sheath-tail bat 	Raptors <ul style="list-style-type: none"> Brown Goshawk Nankeen Kestrel Wedge-tailed Eagle Wedge-tailed eagle (nest) Australian hobby Black-shouldered kite 	<ul style="list-style-type: none"> Brown falcon Whistling kite
--	---	--	---	--	--	---	--

0 0.5 1 1.5
Kilometers

A3 @ 1:32,000

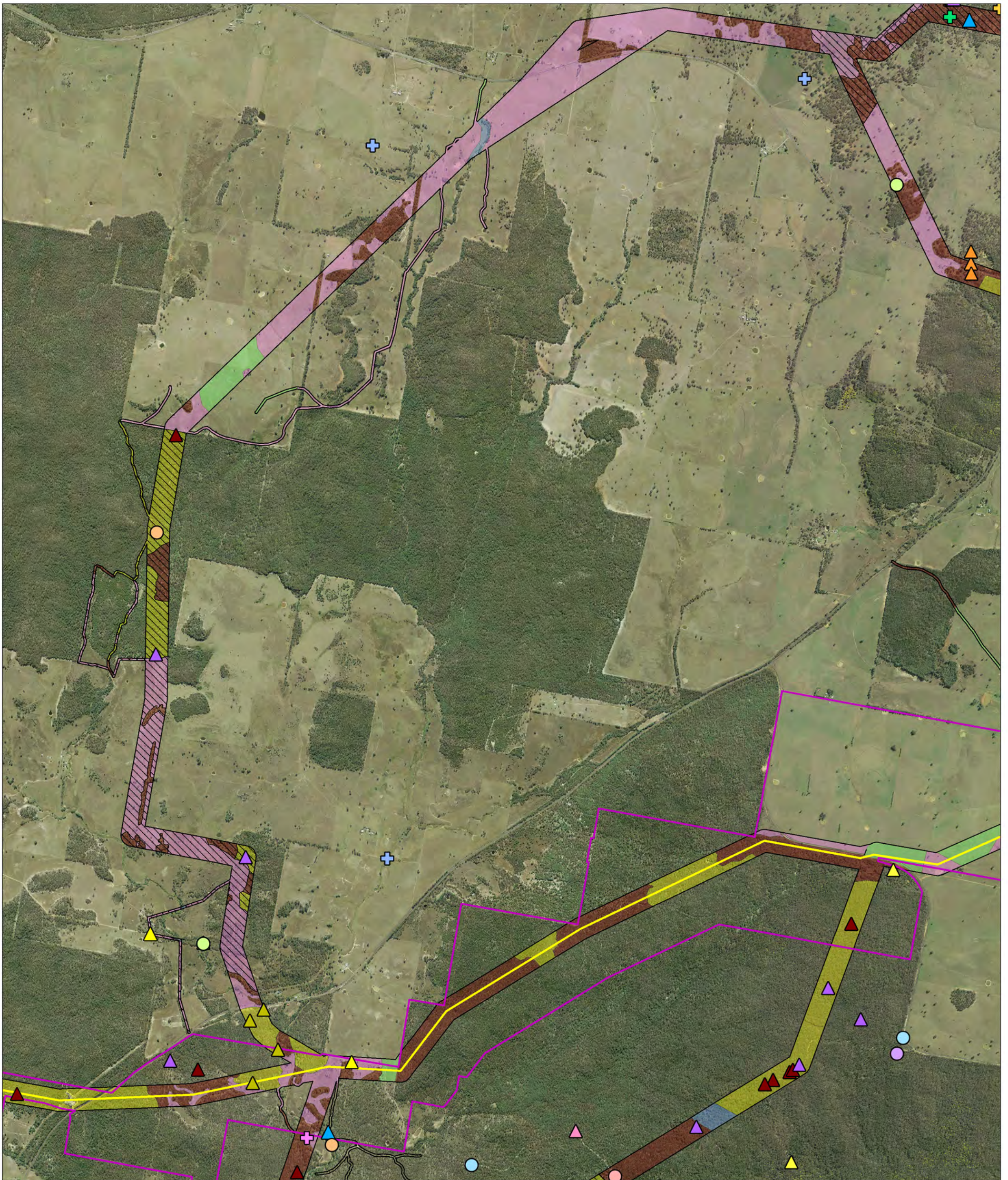
Project: Liverpool Range Wind Farm
Produced by: Virgil Robinson
Date: 31 January 2017
Projection: GDA94 MGA Zone 55

Habitat Type and Fauna Survey Results Zoom View Map 10



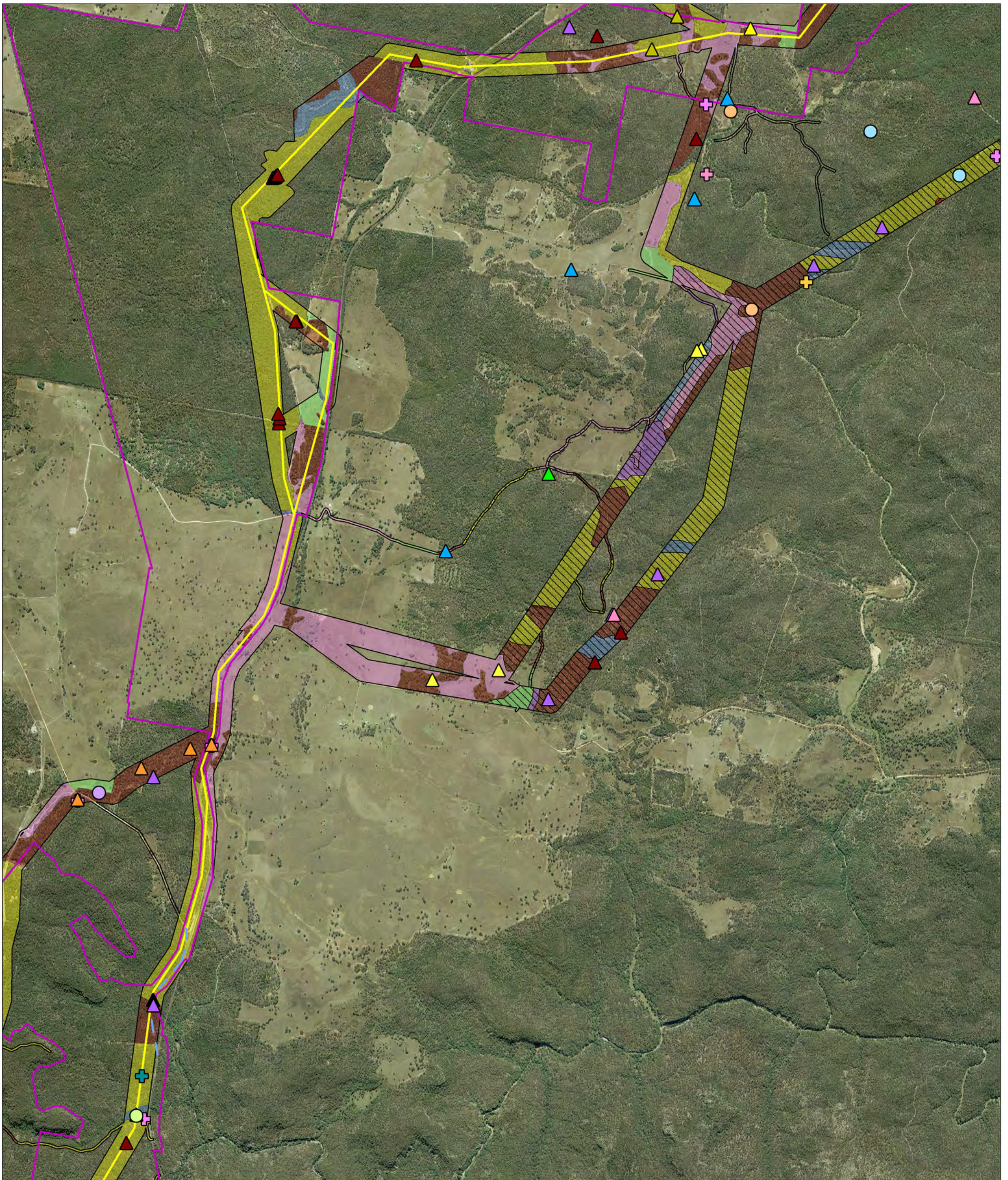
<ul style="list-style-type: none"> Combined survey area 100m turbine buffer Site perimeter Wind Turbine Area Transmission Area Infrastructure Turbine location Access track Underground cabling OH powerline 	<ul style="list-style-type: none"> Transmission line Proposed substation Alternative substation Construction compound Concrete batch plant O&M building Overall habitat quality Good Moderate 	<ul style="list-style-type: none"> Habitat Type Open forest Open pasture Riparian Rocky outcrop Shrubland Woodland Pasture with scattered trees 	<ul style="list-style-type: none"> Listed Birds Black-chinned honeyeater Brown treecreeper Diamond firetail Glossy black cockatoo (feed sign) Glossy black-cockatoo Grey crowned babbler Painted honeyeater Scarlet robin Speckled warbler Square-tailed kite (nest) Varied sitella Powerful owl Rainbow Bee Eater 	<ul style="list-style-type: none"> Listed Mammals Squirrel glider Listed Microbats Common bent-wing bat Corben's long-eared bat Eastern cave bat Large-eared pied bat Yellow-bellied sheath-tail bat 	<ul style="list-style-type: none"> Raptors Brown Goshawk Nankeen Kestrel Wedge-tailed Eagle Wedge-tailed eagle (nest) Australian hobby Black-shouldered kite Brown falcon Whistling kite 	<p>EPURON</p> <p>0 0.5 1 1.5 Kilometers</p> <p>A3 @ 1:32,000</p> <p>Project: Liverpool Range Wind Farm Produced by: Virgil Robinson Date: 31 January 2017 Projection: GDA94 MGA Zone 55</p>
--	---	---	--	--	--	--

Habitat Type and Fauna Survey Results Zoom View Map 11



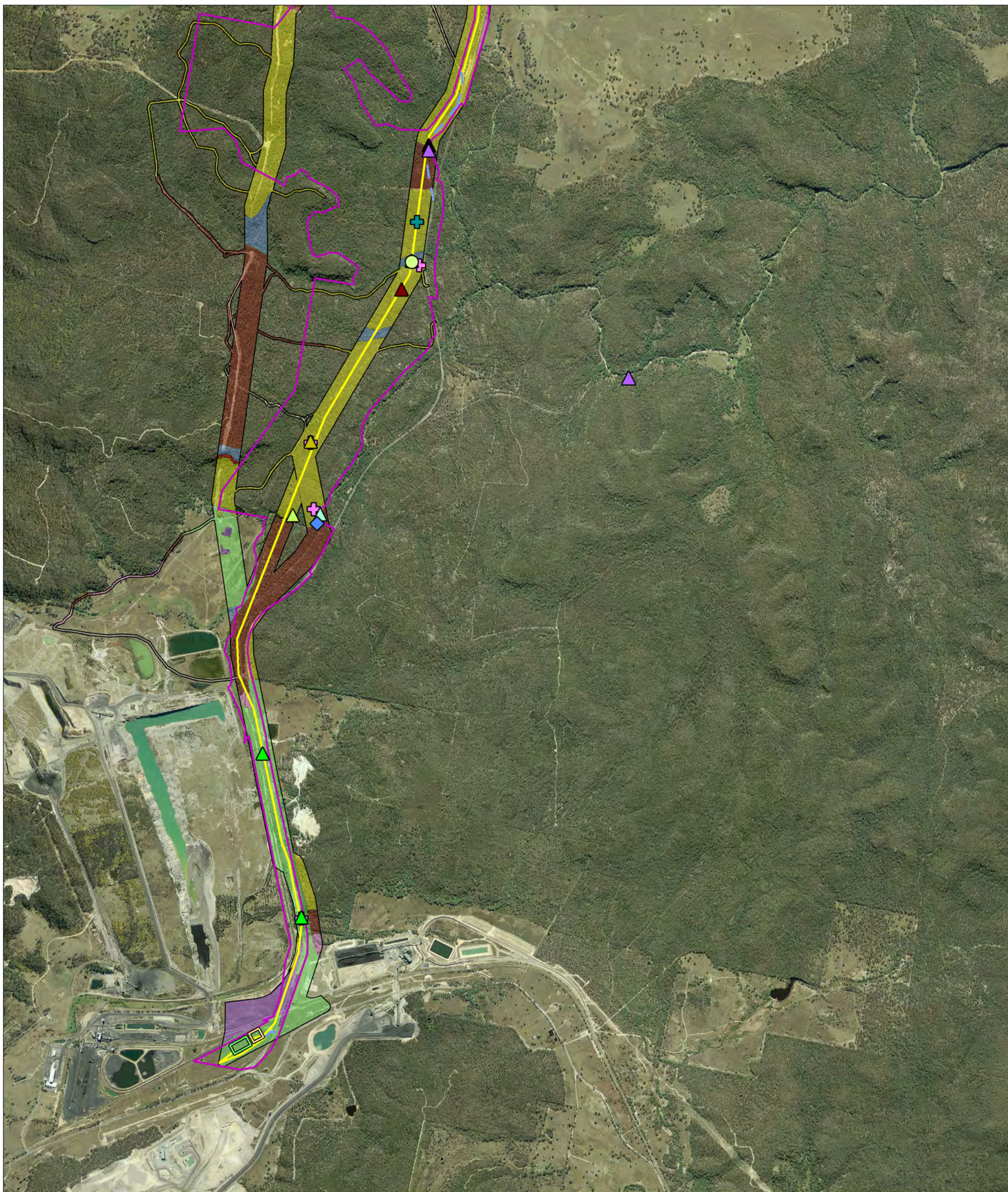
<ul style="list-style-type: none"> Combined survey area 100m turbine buffer Site perimeter Wind Turbine Area Transmission Area Infrastructure Turbine location Access track Underground cabling OH powerline 	<ul style="list-style-type: none"> Transmission line Proposed substation Alternative substation Construction compound Concrete batch plant O&M building Overall habitat quality Good Moderate 	<ul style="list-style-type: none"> Habitat Type Open forest Open pasture Riparian Rocky outcrop Shrubland Woodland Pasture with scattered trees 	<ul style="list-style-type: none"> Listed Birds Black-chinned honeyeater Brown treecreeper Diamond firetail Glossy black cockatoo (feed sign) Glossy black-cockatoo Grey crowned babbler Painted honeyeater Scarlet robin Speckled warbler Square-tailed kite (nest) Varied sitella Powerful owl Rainbow Bee Eater 	<ul style="list-style-type: none"> Listed Mammals Squirrel glider Common bent-wing bat Corben's long-eared bat Eastern cave bat Large-eared pied bat Yellow-bellied sheath-tail bat Brown falcon Whistling kite 	<ul style="list-style-type: none"> Raptors Brown Goshawk Nankeen Kestrel Wedge-tailed Eagle Wedge-tailed eagle (nest) Australian hobby Black-shouldered kite 	<p>EPURON</p> <p>0 0.5 1 1.5 Kilometers</p> <p>A3 @ 1:32,000</p> <p>Project: Liverpool Range Wind Farm Produced by: Virgil Robinson Date: 31 January 2017 Projection: GDA94 MGA Zone 55</p>
--	---	---	--	---	--	--

Habitat Type and Fauna Survey Results Zoom View Map 12



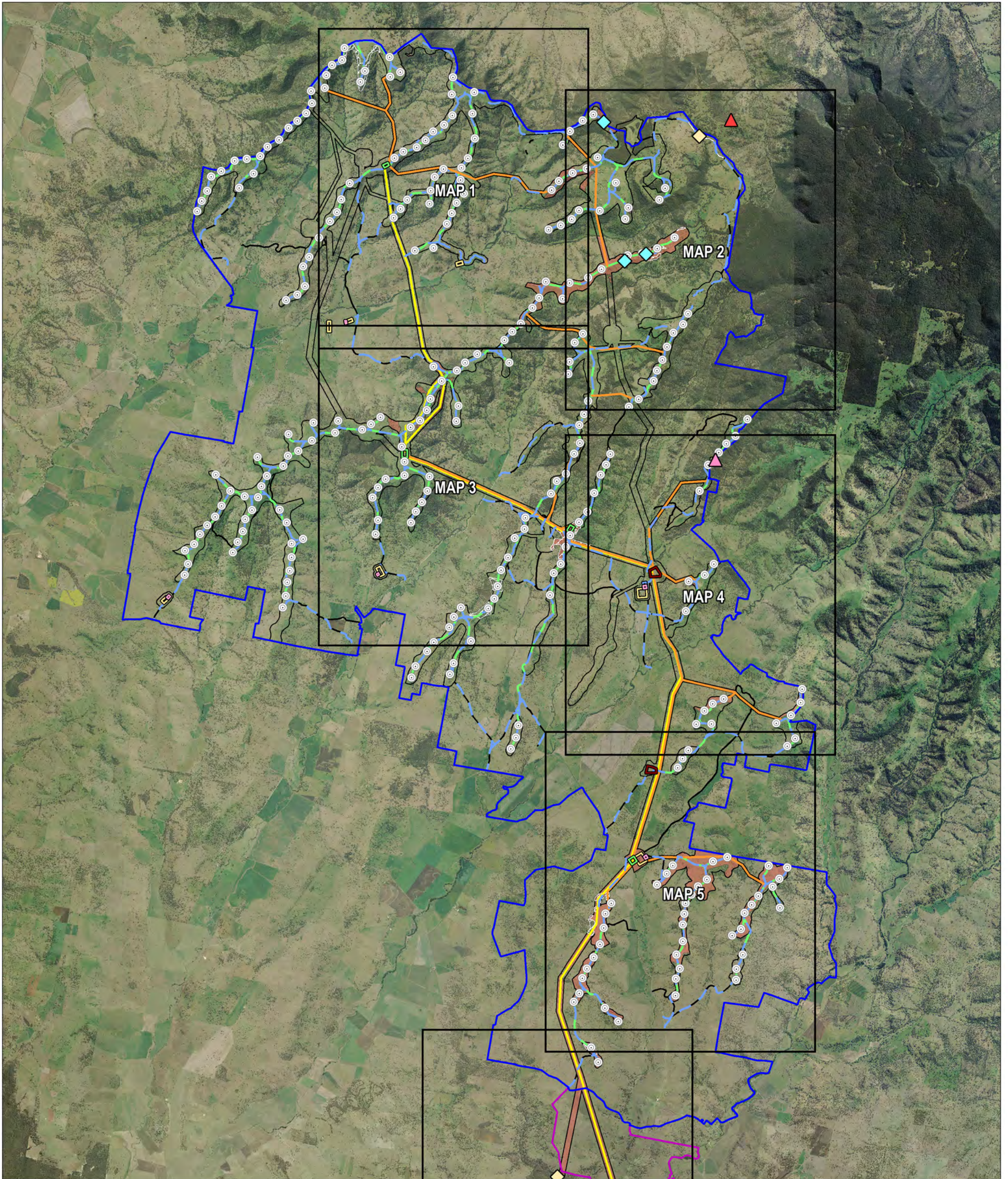
<ul style="list-style-type: none"> Combined survey area 100m turbine buffer Site perimeter Wind Turbine Area Transmission Area Infrastructure Turbine location Access track Underground cabling OH powerline 	<ul style="list-style-type: none"> Transmission line Proposed substation Alternative substation Construction compound Concrete batch plant O&M building Overall habitat quality Good Moderate 	<ul style="list-style-type: none"> Habitat Type Open forest Open pasture Riparian Rocky outcrop Shrubland Woodland Pasture with scattered trees 	<ul style="list-style-type: none"> Listed Birds Black-chinned honeyeater Brown treecreeper Diamond firetail Glossy black cockatoo (feed sign) Glossy black-cockatoo Grey crowned babbler Painted honeyeater Scarlet robin Speckled warbler Square-tailed kite (nest) Varied sitella Powerful owl Rainbow Bee Eater 	<ul style="list-style-type: none"> Listed Mammals Squirrel glider Listed Microbats Common bent-wing bat Corben's long-eared bat Eastern cave bat Large-eared pied bat Yellow-bellied sheath-tail bat 	<ul style="list-style-type: none"> Raptors Brown Goshawk Nankeen Kestrel Wedge-tailed Eagle Wedge-tailed eagle (nest) Australian hobby Black-shouldered kite 	<ul style="list-style-type: none"> Brown falcon Whistling kite 	<div style="text-align: right;"> </div> <div style="text-align: right;"> <p>A3 @ 1:32,000</p> <p>Project: Liverpool Range Wind Farm Produced by: Virgil Robinson Date: 31 January 2017 Projection: GDA94 MGA Zone 55</p> </div>
--	---	---	--	--	--	--	--

Habitat Type and Fauna Survey Results Zoom View Map 13

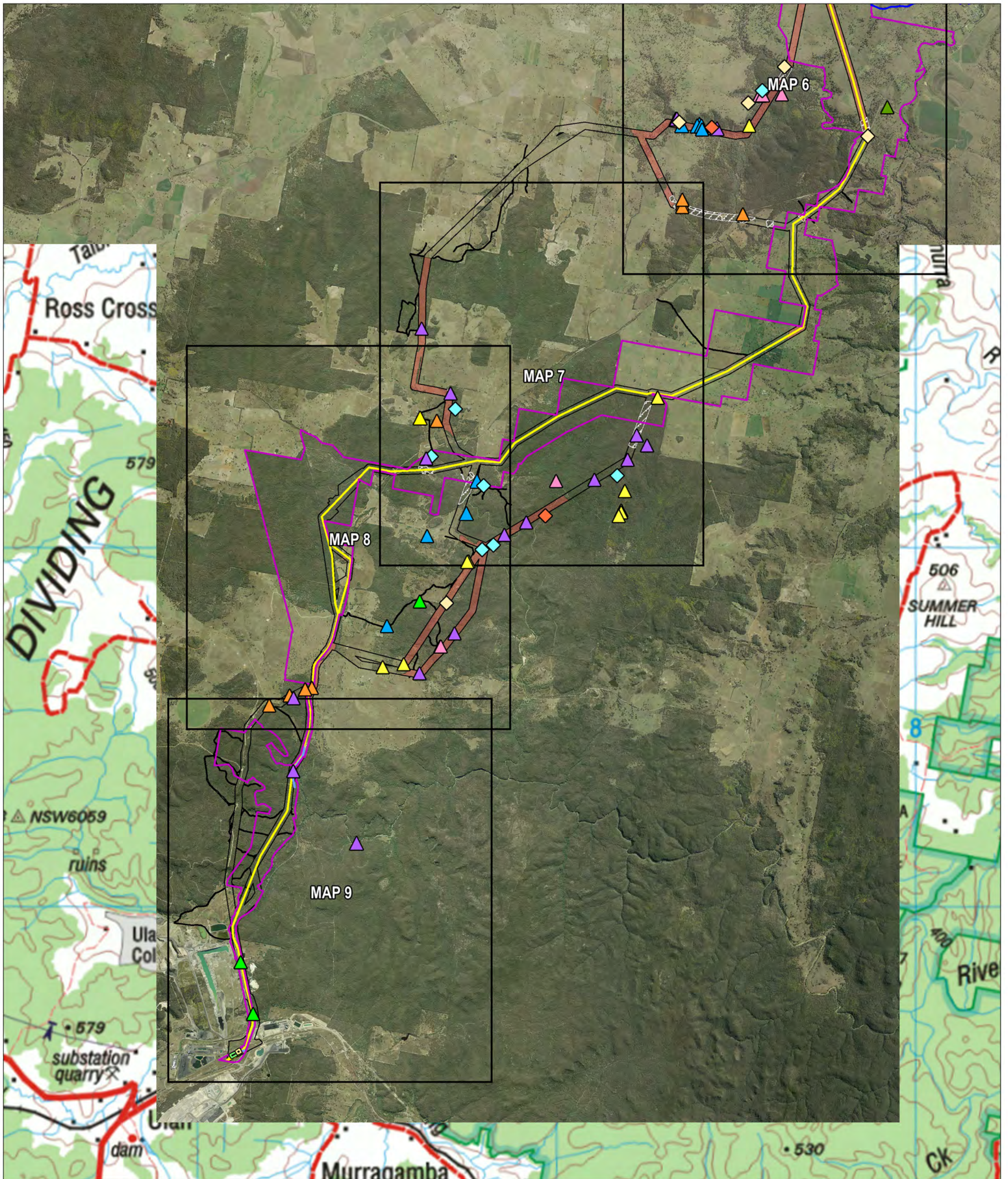


<ul style="list-style-type: none"> Combined survey area 100m turbine buffer Site perimeter Wind Turbine Area Transmission Area Infrastructure Turbine location Access track Underground cabling OH powerline 	<ul style="list-style-type: none"> Transmission line Proposed substation Alternative substation Construction compound Concrete batch plant O&M building Overall habitat quality Good Moderate 	<ul style="list-style-type: none"> Habitat Type Open forest Open pasture Riparian Rocky outcrop Shrubland Woodland Pasture with scattered trees 	<ul style="list-style-type: none"> Listed Birds Black-chinned honeyeater Brown treecreeper Diamond firetail Glossy black cockatoo (feed sign) Glossy black cockatoo Grey crowned babbler Painted honeyeater Scarlet robin Speckled warbler Square-tailed kite (nest) Varied sitella Powerful owl Rainbow Bee Eater 	<ul style="list-style-type: none"> Listed Mammals Squirrel glider Listed Microbats Common bent-wing bat Corben's long-eared bat Eastern cave bat Large-eared pied bat Yellow-bellied sheath-tail bat 	<ul style="list-style-type: none"> Raptors Brown falcon Whistling kite Brown Goshawk Nankeen Kestrel Wedge-tailed Eagle Wedge-tailed eagle (nest) Australian hobby Black-shouldered kite 	<div style="text-align: right;"> </div> <div style="text-align: right;"> </div> <div style="text-align: right;"> <p>A3 @ 1:32,000</p> <p>Project: Liverpool Range Wind Farm Produced by: Virgil Robinson Date: 31 January 2017 Projection: GDA94 MGA Zone 55</p> </div> <div style="text-align: right;"> </div>
--	---	---	--	--	--	--

Woodland Bird Habitat and Survey Results Northern Overview Map



Woodland Bird Habitat and Survey Results Southern Overview Map



<ul style="list-style-type: none"> Combined survey area Site perimeter Wind Turbine Area Transmission Area Infrastructure Turbine location Access track Underground cabling 	<ul style="list-style-type: none"> OH powerline Transmission line Proposed substation Alternative substation Construction compound Concrete batch plant O&M building 	<ul style="list-style-type: none"> Habitat features Ground-dwelling Mistletoe Mistletoe / Ground-dwelling Hollow quality Excellent Good Additional data Woodland bird habitat 	<ul style="list-style-type: none"> Woodland Birds Black-chinned honeyeater Brown treecreeper Diamond firetail Grey crowned babbler Painted honeyeater 	<ul style="list-style-type: none"> Scarlet robin Varied sitella Speckled warbler
---	--	---	---	--

0 1.5 3 4.5
Kilometers

A3 @ 1:100,000

Project: Liverpool Range Wind Farm
Produced by: Virgil Robinson
Date: 31 January 2017
Projection: GDA94 MGA Zone 55