



Combined survey area

Site Perimeter

Wind turbine Area

Transmission Area

Infrastructure

Turbine location

Access track

Underground cabling

OH powerline

Transmission line

Proposed substation

Alternative substation

Construction compound

Concrete batch plant

O&M building

CEEC / EEC Areas

White Box-Yellow Box-Blakely's Red Gum Grassy Woodland and Derived Native Grassland CEEC

Box Gum Woodland EEC (with native tree component)

Box Gum Woodland EEC (with absent or isolated native tree component)

Vegetation Condition

Good

Moderate-Good

Moderate

Poor-Moderate

Poor

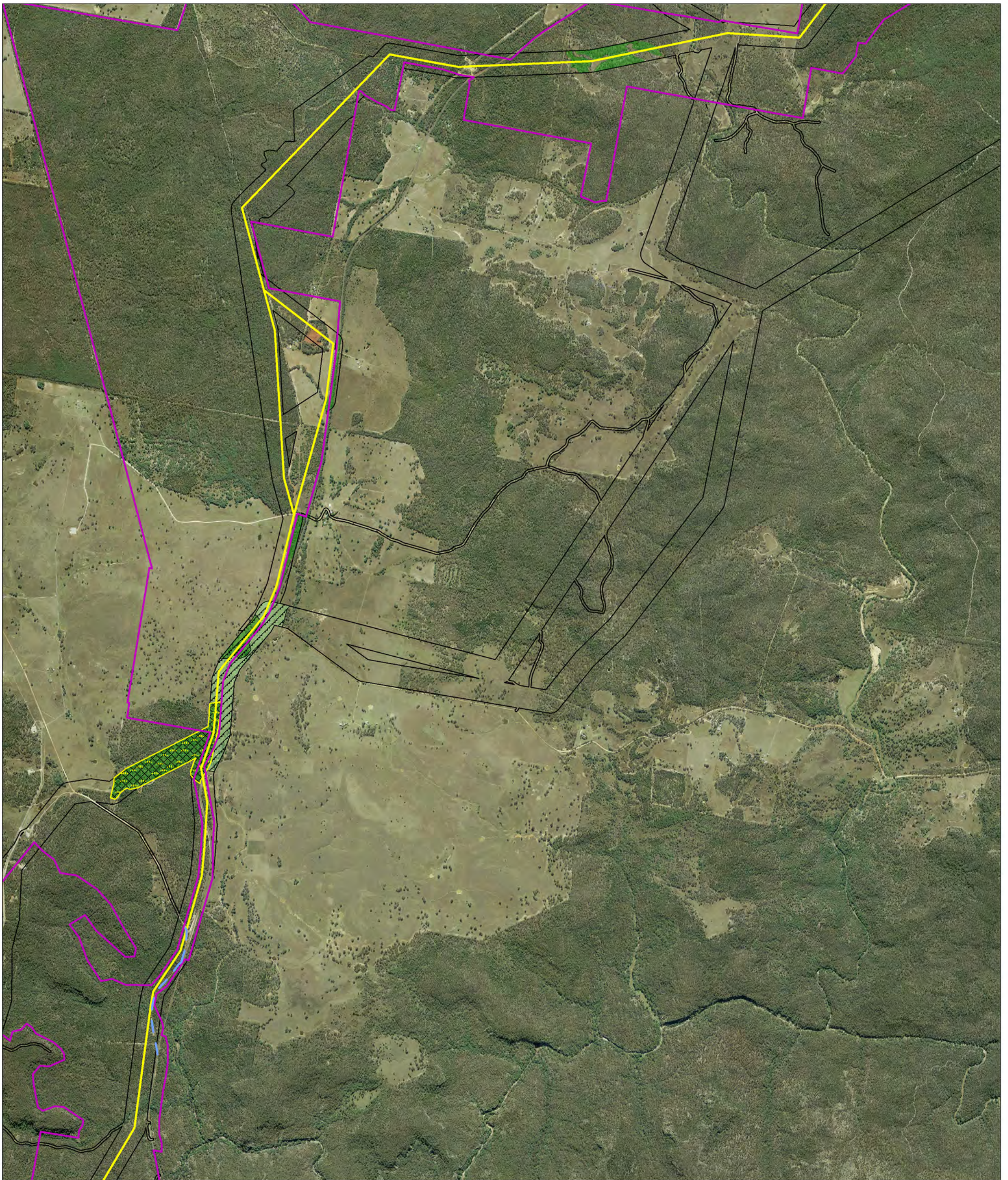
EPURON



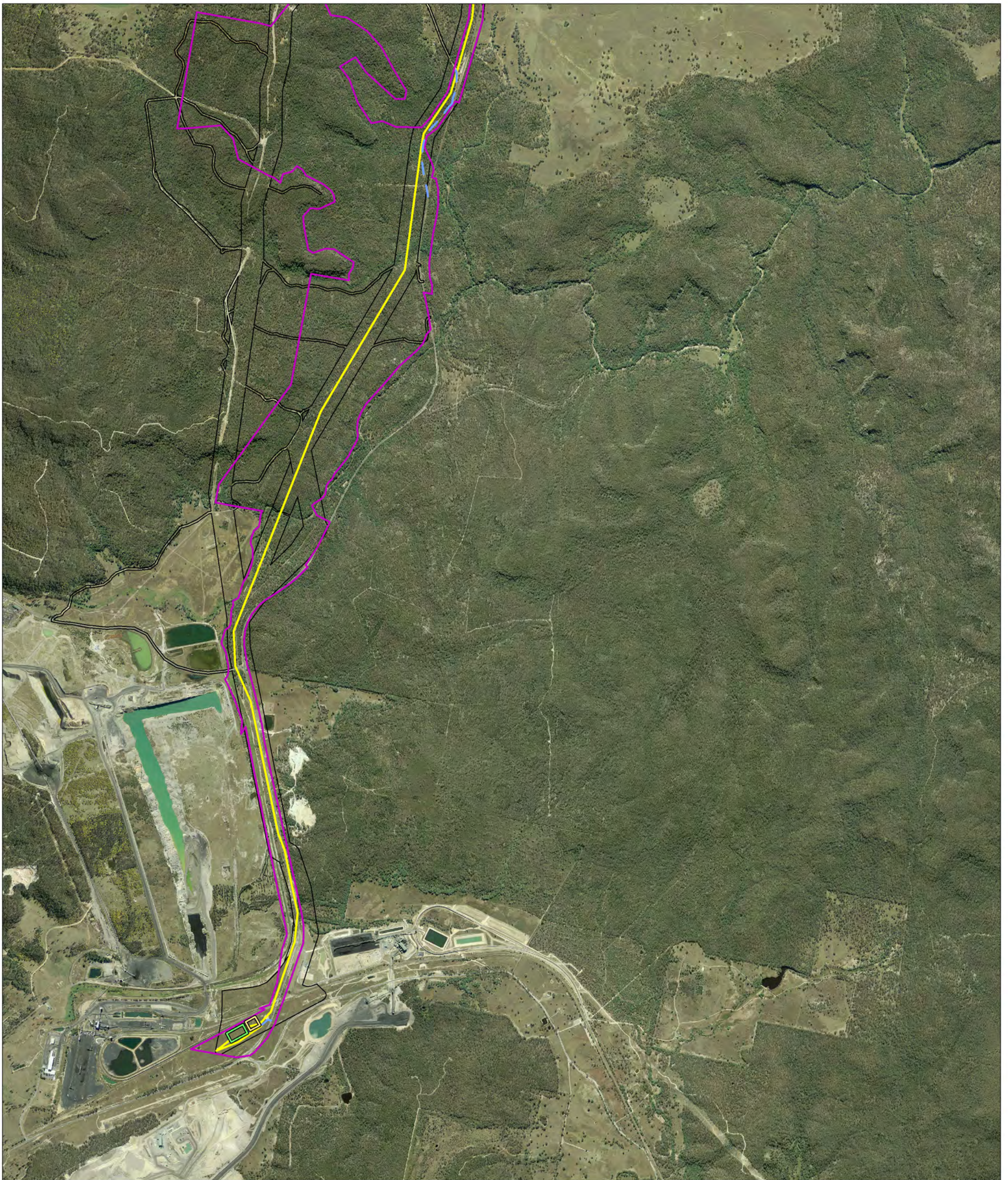
A3 @ 1:32,000

Project: Liverpool Range Wind Farm
 Produced by: Virgil Robinson
 Date: 31 January 2017
 Projection: GDA94 MGA Zone 55



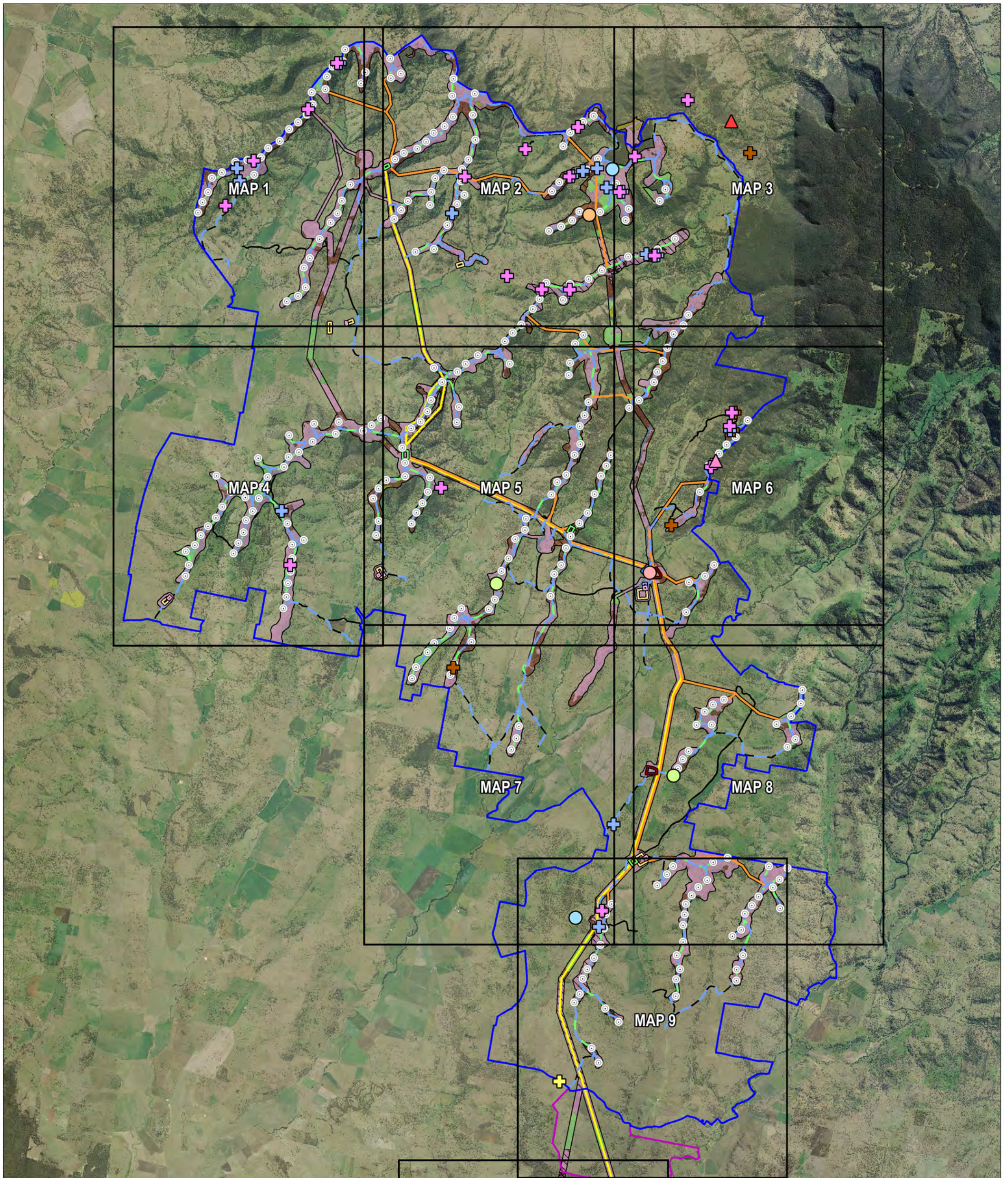


<ul style="list-style-type: none"> Combined survey area Site Perimeter Wind turbine Area Transmission Area Infrastructure Turbine location Access track Underground cabling 	<ul style="list-style-type: none"> OH powerline Transmission line Proposed substation Alternative substation Construction compound Concrete batch plant O&M building 	<p>CEEC / EEC Areas</p> <ul style="list-style-type: none"> White Box-Yellow Box-Blakely's Red Gum Grassy Woodland and Derived Native Grassland CEEC Box Gum Woodland EEC (with native tree component) Box Gum Woodland EEC (with absent or isolated native tree component) 	<p>Vegetation Condition</p> <ul style="list-style-type: none"> Good Moderate-Good Moderate Poor-Moderate Poor 	<p>EPURON</p> <p>0 0.5 1 1.5 Kilometers</p> <p>A3 @ 1:32,000</p> <p>Project: Liverpool Range Wind Farm Produced by: Virgil Robinson Date: 31 January 2017 Projection: GDA94 MGA Zone 55</p>
---	--	---	--	--



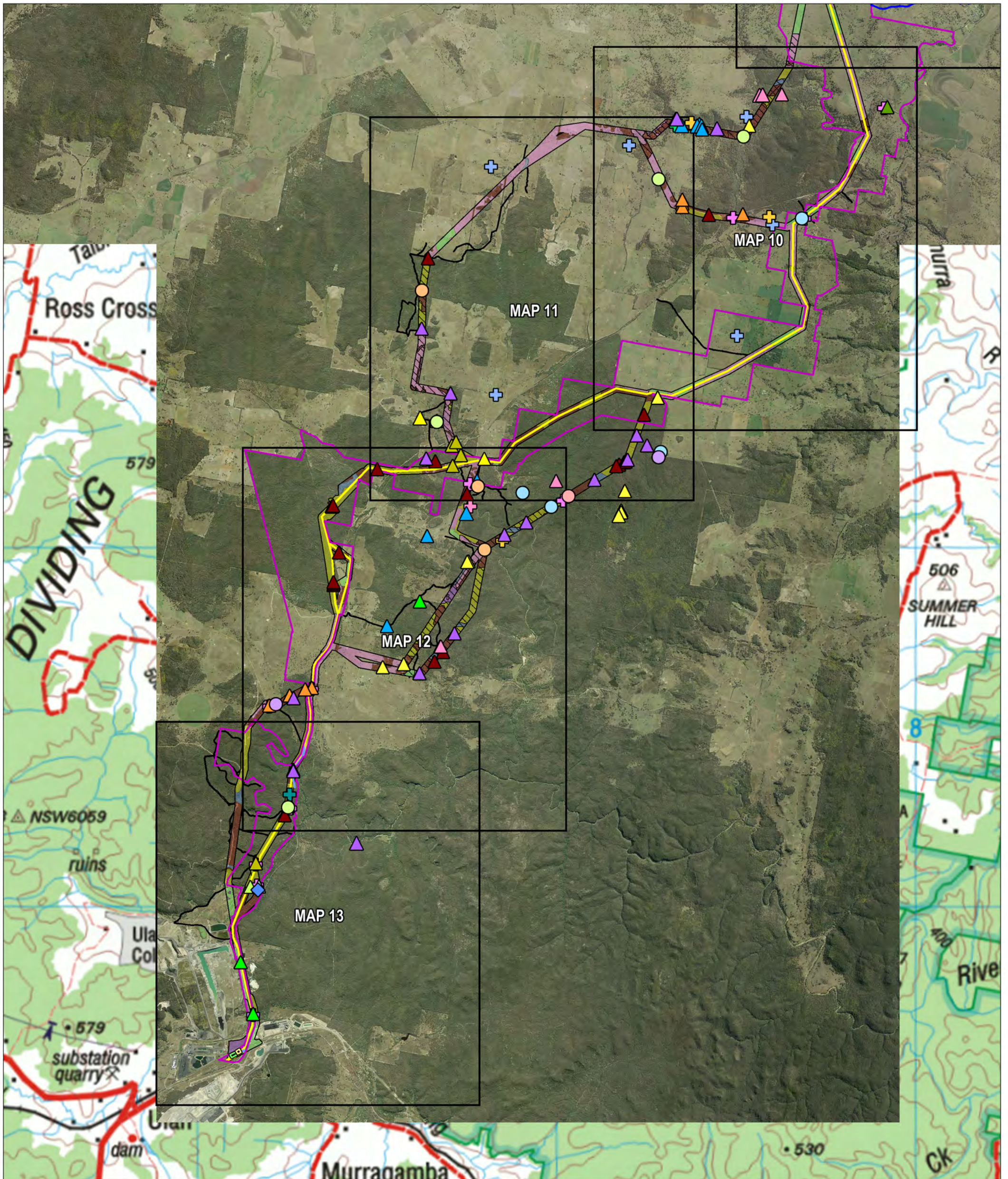
<ul style="list-style-type: none"> Combined survey area Site Perimeter Wind turbine Area Transmission Area Infrastructure Turbine location Access track Underground cabling 	<ul style="list-style-type: none"> OH powerline Transmission line Proposed substation Alternative substation Construction compound Concrete batch plant O&M building 	<p>CEEC / EEC Areas</p> <ul style="list-style-type: none"> White Box-Yellow Box-Blakely's Red Gum Grassy Woodland and Derived Native Grassland CEEC Box Gum Woodland EEC (with native tree component) Box Gum Woodland EEC (with absent or isolated native tree component) 	<p>Vegetation Condition</p> <ul style="list-style-type: none"> Good Moderate-Good Moderate Poor-Moderate Poor 	<p>EPURON</p> <p>0 0.5 1 1.5 Kilometers</p> <p>A3 @ 1:32,000</p> <p>Project: Liverpool Range Wind Farm Produced by: Virgil Robinson Date: 31 January 2017 Projection: GDA94 MGA Zone 55</p>
---	--	---	--	--

Habitat Type and Fauna Survey Results Northern Overview Map



<ul style="list-style-type: none"> Combined survey area 100m turbine buffer Site perimeter Wind Turbine Area Transmission Area Infrastructure Turbine location Access track Underground cabling OH powerline 	<ul style="list-style-type: none"> Transmission line Proposed substation Alternative substation Construction compound Concrete batch plant O&M building Overall habitat quality Good Moderate 	<ul style="list-style-type: none"> Habitat Type Open forest Open pasture Riparian Rocky outcrop Shrubland Woodland Pasture with scattered trees 	<ul style="list-style-type: none"> Listed Birds Black-chinned honeyeater Brown treecreeper Diamond firetail Glossy black cockatoo (feed sign) Glossy black-cockatoo Grey crowned babbler Painted honeyeater Scarlet robin Speckled warbler Square-tailed kite (nest) Varied sitella Powerful owl Rainbow Bee Eater 	<ul style="list-style-type: none"> Listed Mammals Squirrel glider Common bent-wing bat Corben's long-eared bat Eastern cave bat Large-eared pied bat Yellow-bellied sheath-tail bat 	<ul style="list-style-type: none"> Raptors Brown Goshawk Nankeen Kestrel Wedge-tailed Eagle Wedge-tailed eagle (nest) Australian hobby Black-shouldered kite 	<ul style="list-style-type: none"> Brown falcon Whistling kite 	<p>EPURON</p> <p>0 1 2 3 4 5 Kilometers</p> <p>A3 @ 1:120,000</p> <p>Project: Liverpool Range Wind Farm Produced by: Virgil Robinson Date: 31 January 2017 Projection: GDA94 MGA Zone 55</p>
--	---	---	--	---	--	--	---

Habitat Type and Fauna Survey Results Southern Overview Map



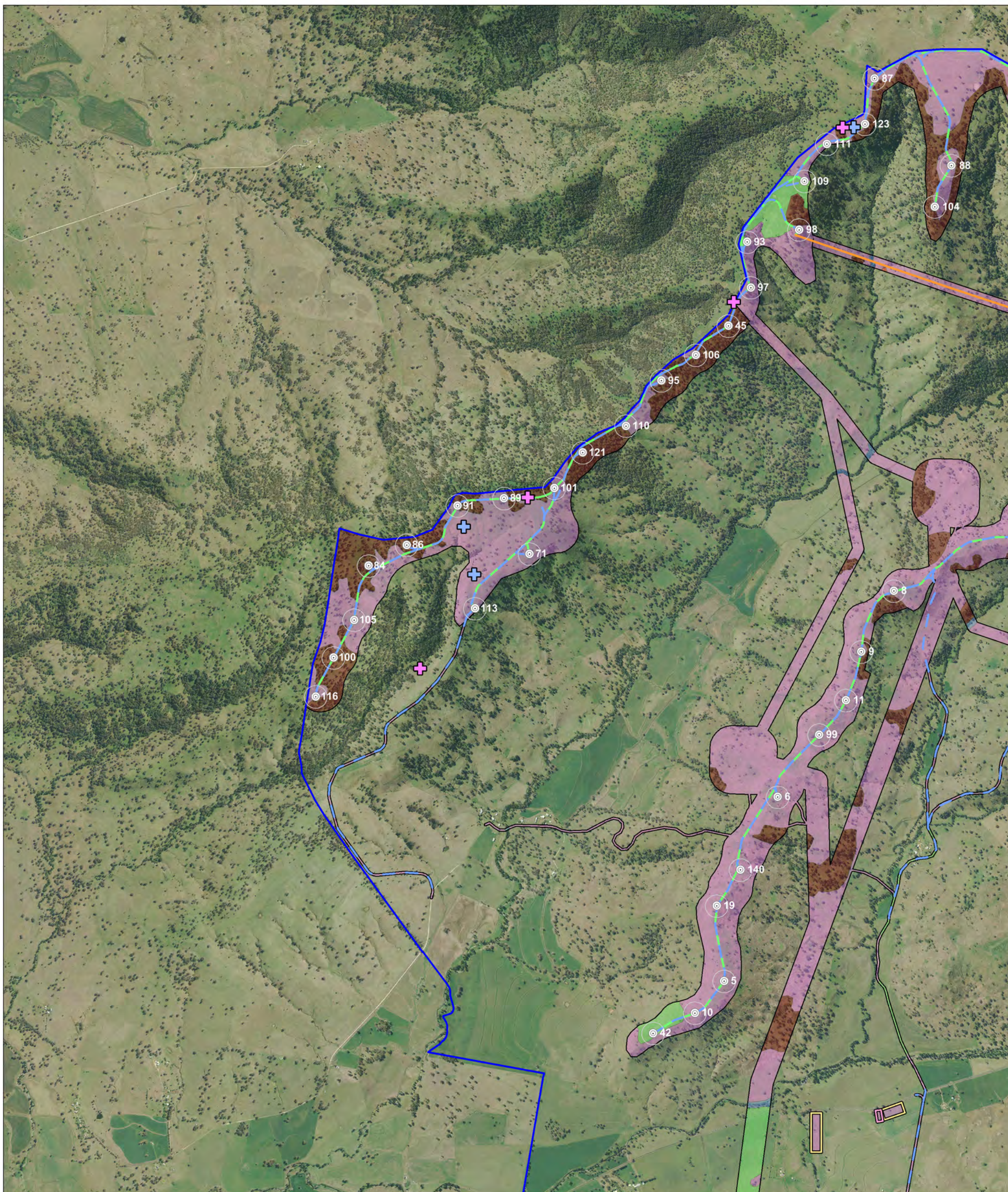
<ul style="list-style-type: none"> Combined survey area 100m turbine buffer Site perimeter Wind Turbine Area Transmission Area Infrastructure Turbine location Access track Underground cabling OH powerline 	<ul style="list-style-type: none"> Transmission line Proposed substation Alternative substation Construction compound Concrete batch plant O&M building Overall habitat quality Good Moderate 	<ul style="list-style-type: none"> Habitat Type Open forest Open pasture Riparian Rocky outcrop Shrubland Woodland Pasture with scattered trees 	<ul style="list-style-type: none"> Listed Birds ▲ Black-chinned honeyeater ▲ Brown treecreeper ▲ Diamond firetail ▲ Glossy black cockatoo (feed sign) ▲ Glossy black-cockatoo ▲ Grey crowned babbler ▲ Painted honeyeater ▲ Scarlet robin ▲ Speckled warbler ▲ Square-tailed kite (nest) ▲ Varied sitella ▲ Powerful owl ▲ Rainbow Bee Eater 	<ul style="list-style-type: none"> Listed Mammals ◆ Squirrel glider Listed Microbats ● Common bent-wing bat ● Corben's long-eared bat ● Eastern cave bat ● Large-eared pied bat ● Yellow-bellied sheath-tail bat 	<ul style="list-style-type: none"> Raptors + Brown Goshawk + Nankeen Kestrel + Wedge-tailed Eagle + Wedge-tailed eagle (nest) + Australian hobby + Black-shouldered kite 	<ul style="list-style-type: none"> + Brown falcon + Whistling kite
---	--	---	--	---	---	---

0 1.5 3 4.5
Kilometers

A3 @ 1:100,000

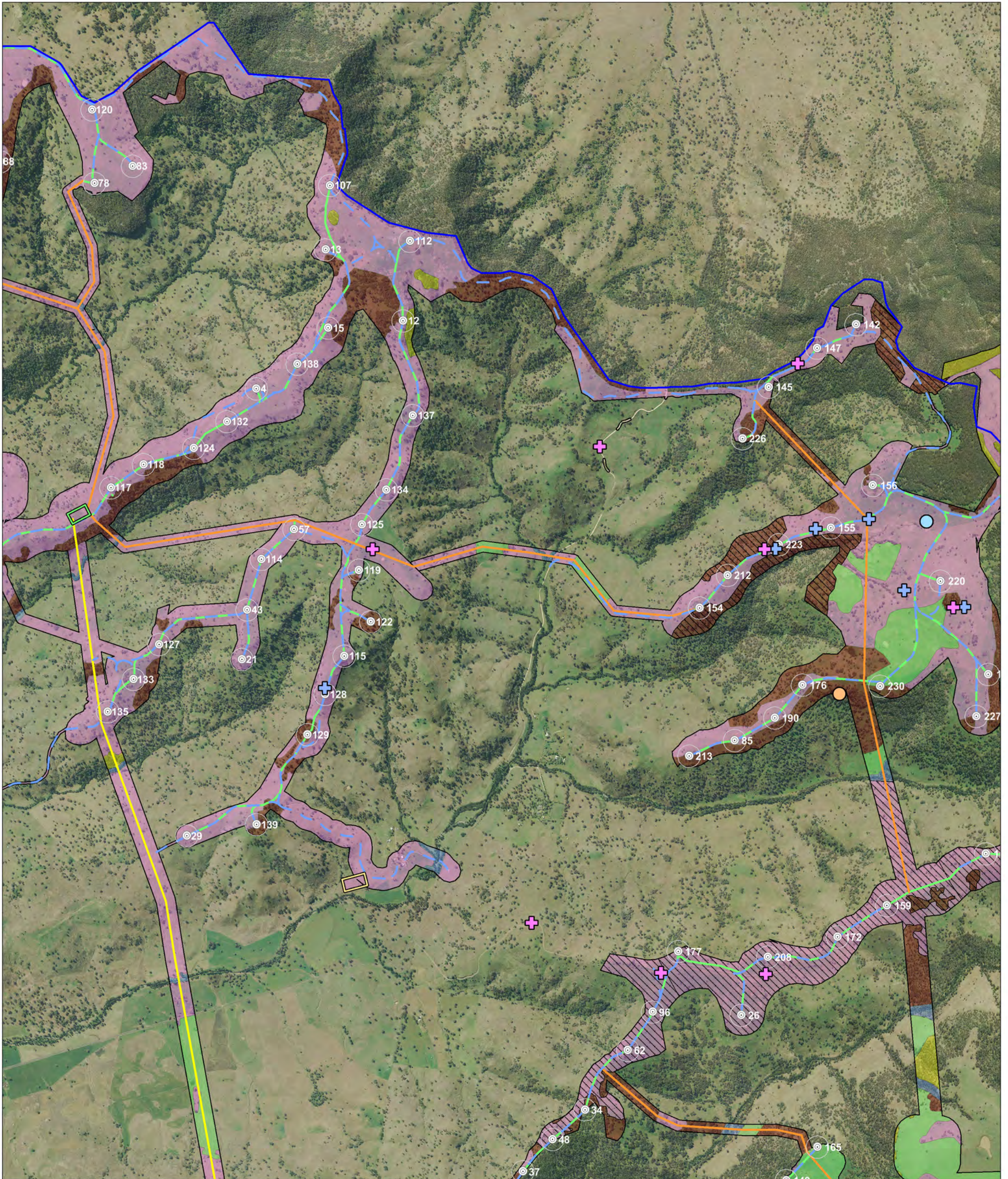
Project: Liverpool Range Wind Farm
Produced by: Virgil Robinson
Date: 31 January 2017
Projection: GDA94 MGA Zone 55

Habitat Type and Fauna Survey Results Zoom View Map 1



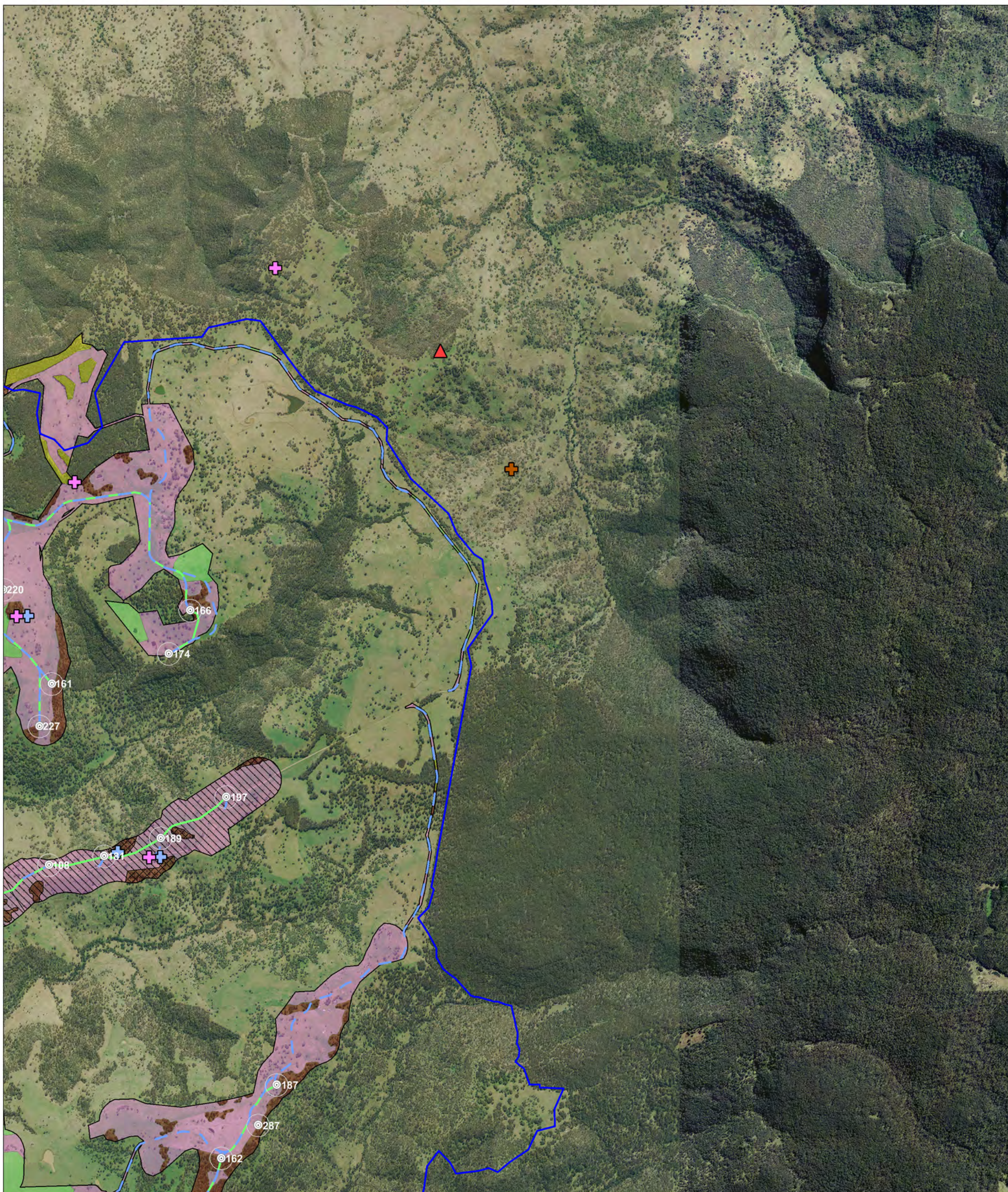
<ul style="list-style-type: none"> Combined survey area 100m turbine buffer Site perimeter Wind Turbine Area Transmission Area Infrastructure Turbine location Access track Underground cabling OH powerline 	<ul style="list-style-type: none"> Transmission line Proposed substation Alternative substation Construction compound Concrete batch plant O&M building Overall habitat quality Good Moderate 	Habitat Type <ul style="list-style-type: none"> Open forest Open pasture Riparian Rocky outcrop Shrubland Woodland Pasture with scattered trees 	Listed Birds <ul style="list-style-type: none"> Black-chinned honeyeater Scarlet robin Brown treecreeper Diamond firetail Glossy black cockatoo (feed sign) Glossy black-cockatoo Grey crowned babbler Painted honeyeater Speckled warbler Square-tailed kite (nest) Varied sitella Powerful owl Rainbow Bee Eater 	Listed Mammals <ul style="list-style-type: none"> Squirrel glider Common bent-wing bat Corben's long-eared bat Eastern cave bat Large-eared pied bat Yellow-bellied sheath-tail bat 	Raptors <ul style="list-style-type: none"> Brown Goshawk Nankeen Kestrel Wedge-tailed Eagle Wedge-tailed eagle (nest) Australian hobby Black-shouldered kite 	<ul style="list-style-type: none"> Brown falcon Whistling kite 	<div style="text-align: right;"> </div> <div style="text-align: right;"> </div> <div style="text-align: right;"> <p>A3 @ 1:32,000</p> <p>Project: Liverpool Range Wind Farm Produced by: Virgil Robinson Date: 31 January 2017 Projection: GDA94 MGA Zone 55</p> </div> <div style="text-align: right;"> </div>
--	---	--	---	--	---	--	--

Habitat Type and Fauna Survey Results Zoom View Map 2



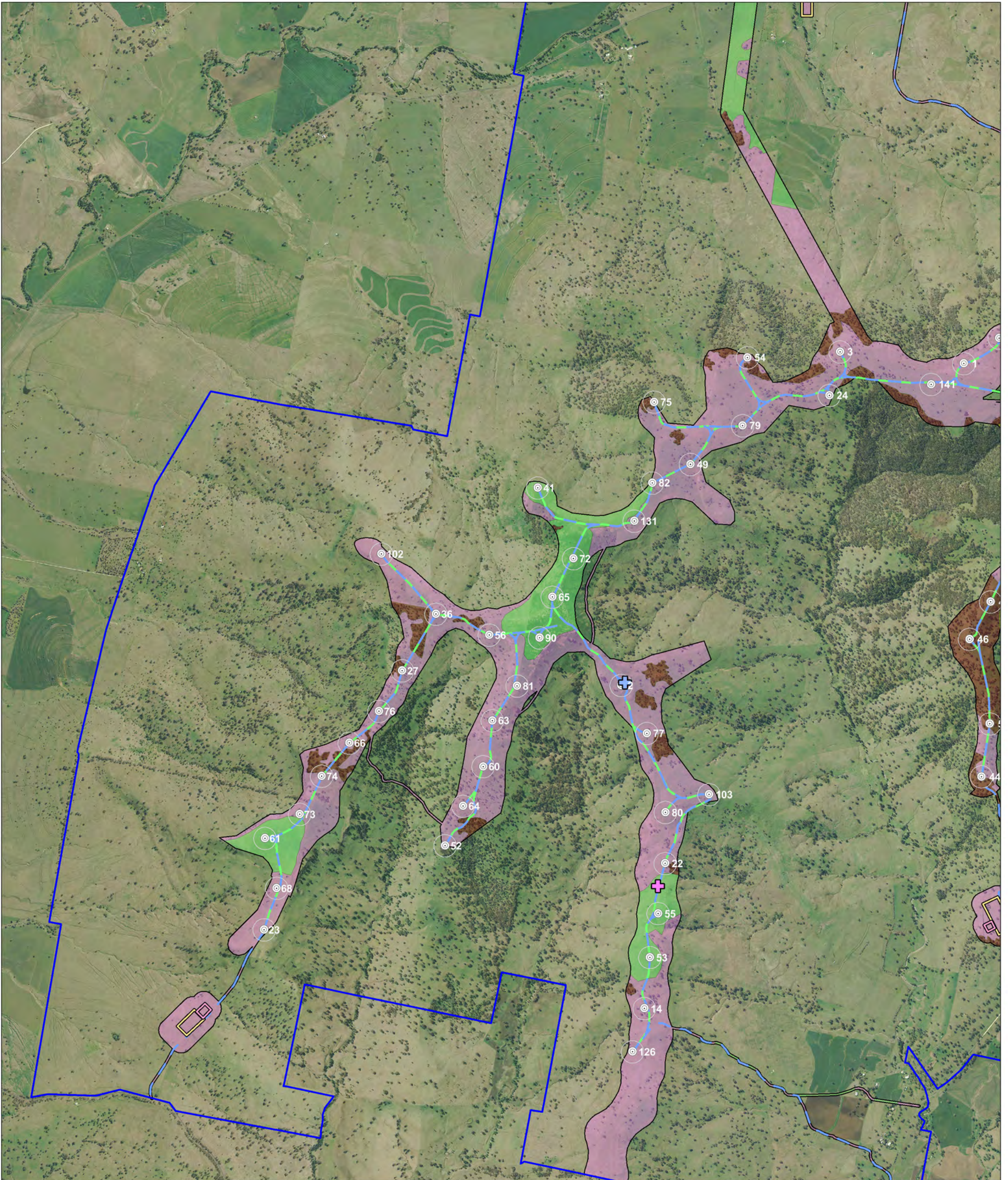
<ul style="list-style-type: none"> Combined survey area 100m turbine buffer Site perimeter Wind Turbine Area Transmission Area Infrastructure Turbine location Access track Underground cabling OH powerline 	<ul style="list-style-type: none"> Transmission line Proposed substation Alternative substation Construction compound Concrete batch plant O&M building Overall habitat quality Good Moderate 	<ul style="list-style-type: none"> Habitat Type Open forest Open pasture Riparian Rocky outcrop Shrubland Woodland Pasture with scattered trees 	<ul style="list-style-type: none"> Listed Birds Black-chinned honeyeater Scarlet robin Brown treecreeper Diamond firetail Glossy black cockatoo (feed sign) Glossy black-cockatoo Grey crowned babbler Painted honeyeater Speckled warbler Square-tailed kite (nest) Varied sitella Powerful owl Rainbow Bee Eater 	<ul style="list-style-type: none"> Listed Mammals Squirrel glider Common bent-wing bat Corben's long-eared bat Eastern cave bat Large-eared pied bat Yellow-bellied sheath-tail bat 	<ul style="list-style-type: none"> Raptors Brown falcon Whistling kite Goshawk Nankeen Kestrel Wedge-tailed Eagle Wedge-tailed eagle (nest) Australian hobby Black-shouldered kite 	<div style="text-align: right;"> </div> <div style="text-align: right;"> </div> <div style="text-align: right;"> <p>A3 @ 1:32,000</p> <p>Project: Liverpool Range Wind Farm Produced by: Virgil Robinson Date: 31 January 2017 Projection: GDA94 MGA Zone 55</p> </div>
--	---	---	--	---	--	--

Habitat Type and Fauna Survey Results Zoom View Map 3



<ul style="list-style-type: none"> Combined survey area 100m turbine buffer Site perimeter Wind Turbine Area Transmission Area Infrastructure Turbine location Access track Underground cabling OH powerline 	<ul style="list-style-type: none"> Transmission line Proposed substation Alternative substation Construction compound Concrete batch plant O&M building Overall habitat quality Good Moderate 	<ul style="list-style-type: none"> Habitat Type Open forest Open pasture Riparian Rocky outcrop Shrubland Woodland Pasture with scattered trees 	<ul style="list-style-type: none"> Listed Birds Black-chinned honeyeater Brown treecreeper Diamond firetail Glossy black cockatoo (feed sign) Glossy black-cockatoo Grey crowned babbler Painted honeyeater Scarlet robin Speckled warbler Square-tailed kite (nest) Varied sitella Powerful owl Rainbow Bee Eater 	<ul style="list-style-type: none"> Listed Mammals Squirrel glider Listed Microbats Common bent-wing bat Corben's long-eared bat Eastern cave bat Large-eared pied bat Yellow-bellied sheath-tail bat 	<ul style="list-style-type: none"> Raptors Brown Goshawk Nankeen Kestrel Wedge-tailed Eagle Wedge-tailed eagle (nest) Australian hobby Black-shouldered kite Brown falcon Whistling kite 	<p>EPURON</p> <p>0 0.5 1 1.5 Kilometers</p> <p>A3 @ 1:32,000</p> <p>Project: Liverpool Range Wind Farm Produced by: Virgil Robinson Date: 31 January 2017 Projection: GDA94 MGA Zone 55</p>
--	---	---	--	--	--	--

Habitat Type and Fauna Survey Results Zoom View Map 4



<ul style="list-style-type: none"> Combined survey area 100m turbine buffer Site perimeter Wind Turbine Area Transmission Area Infrastructure Turbine location Access track Underground cabling OH powerline 	<ul style="list-style-type: none"> Transmission line Proposed substation Alternative substation Construction compound Concrete batch plant O&M building Overall habitat quality: Good Overall habitat quality: Moderate 	Habitat Type <ul style="list-style-type: none"> Open forest Open pasture Riparian Rocky outcrop Shrubland Woodland Pasture with scattered trees 	Listed Birds <ul style="list-style-type: none"> Black-chinned honeyeater Brown treecreeper Diamond firetail Glossy black cockatoo (feed sign) Glossy black-cockatoo Grey crowned babbler Painted honeyeater Scarlet robin Speckled warbler Square-tailed kite (nest) Varied sitella Powerful owl Rainbow Bee Eater 	Listed Mammals <ul style="list-style-type: none"> Squirrel glider Common bent-wing bat Corben's long-eared bat Eastern cave bat Large-eared pied bat Yellow-bellied sheath-tail bat 	Raptors <ul style="list-style-type: none"> Brown falcon Whistling kite Brown Goshawk Nankeen Kestrel Wedge-tailed Eagle Wedge-tailed eagle (nest) Australian hobby Black-shouldered kite 	<p>0 0.5 1 1.5 Kilometers</p> <p>A3 @ 1:32,000</p> <p>Project: Liverpool Range Wind Farm Produced by: Virgil Robinson Date: 31 January 2017 Projection: GDA94 MGA Zone 55</p>
--	---	--	---	--	---	---

Habitat Type and Fauna Survey Results Zoom View Map 5



<ul style="list-style-type: none"> Combined survey area 100m turbine buffer Site perimeter Wind Turbine Area Transmission Area Infrastructure Turbine location Access track Underground cabling OH powerline 	<ul style="list-style-type: none"> Transmission line Proposed substation Alternative substation Construction compound Concrete batch plant O&M building Overall habitat quality Good Moderate 	<p>Habitat Type</p> <ul style="list-style-type: none"> Open forest Open pasture Riparian Rocky outcrop Shrubland Woodland Pasture with scattered trees 	<p>Listed Birds</p> <ul style="list-style-type: none"> Black-chinned honeyeater Brown treecreeper Diamond firetail Glossy black cockatoo (feed sign) Glossy black-cockatoo Grey crowned babbler Painted honeyeater Scarlet robin Speckled warbler Square-tailed kite (nest) Varied sitella Powerful owl Rainbow Bee Eater 	<p>Listed Mammals</p> <ul style="list-style-type: none"> Squirrel glider Common bent-wing bat Corben's long-eared bat Eastern cave bat Large-eared pied bat Yellow-bellied sheath-tail bat 	<p>Listed Microbats</p> <ul style="list-style-type: none"> Common bent-wing bat Corben's long-eared bat Eastern cave bat Large-eared pied bat Yellow-bellied sheath-tail bat 	<p>Raptors</p> <ul style="list-style-type: none"> Brown Goshawk Nankeen Kestrel Wedge-tailed Eagle Wedge-tailed eagle (nest) Australian hobby Black-shouldered kite 	<ul style="list-style-type: none"> Brown falcon Whistling kite 	<p>EPURON</p> <p>0 0.5 1 1.5 Kilometers</p> <p>A3 @ 1:32,000</p> <p>Project: Liverpool Range Wind Farm Produced by: Virgil Robinson Date: 31 January 2017 Projection: GDA94 MGA Zone 55</p>
--	---	---	--	---	---	--	--	--