

St Patricks Plains Wind Farm



A photomontage showing what the St Patricks Plains Wind Farm would look like from Poatina Road.

New owner

The St Patricks Plains Wind Farm in the Central Highlands has been acquired by Vestas Development A/S. Vestas is one of the most experienced wind energy providers globally and a developer of high-quality wind energy projects.

Vestas is working through the project's consent conditions, geotechnical engineering and detailed design and management plans, and has commenced engagement with council and other key stakeholders about community benefit commitments.

Thank you to all the suppliers, businesses and property owners who have expressed interest in providing services or accommodation for the project, these details have been passed on and can continue to be sent to Vestas via the contact details overleaf.

If you no longer wish to receive newsletters, please let us know and e-news subscribers can update their preferences online. Otherwise, the newsletter lists will be passed on to Vestas to ensure newsletter recipients are kept up to date as the project progresses.

Thank you

Ark Energy's St Patricks Plains Wind Farm project team led by Donna Bolton, General Manager Development for Tasmania, wish to again sincerely thank the project's landowners and community members for their support over the past eight years and throughout the project's planning and approvals.

This will be an exciting project for Tasmania and we are proud of the work done for it to date. We are confident Vestas will be a good neighbour and continue to seek to minimise environmental impacts and deliver meaningful benefits to the local community and wider region as the project moves forward to construction.



Planning and assessment documentation is available from the St Patricks Plains Wind Farm page in the Environment Protection Authority Tasmania's website. To access, scan QR code left or visit:

<https://epa.tas.gov.au/business-industry/assessment/proposals-assessed-by-the-epa/st-patricks-plains-wind-farm-pty-ltd-st-patricks-plains-wind-farm-central-highlands-tasmania>

DCCEEW's approval decision notice with final conditions is available from the St Patricks Plains Wind Farm page in the EPBC Public Portal (EPBC Number 2019/8497). To access, scan QR code right or visit:

<https://epbcpportal.environment.gov.au/all-referrals/project-referral-summary/?id=39912b26-b0a2-e911-b1b7-005056842ad1>



Location



The project area for the St Patricks Plains Wind Farm is about 10 km south-east of Miena and 25 km north of Bothwell in the Central Highlands area of Tasmania.

Key project information:

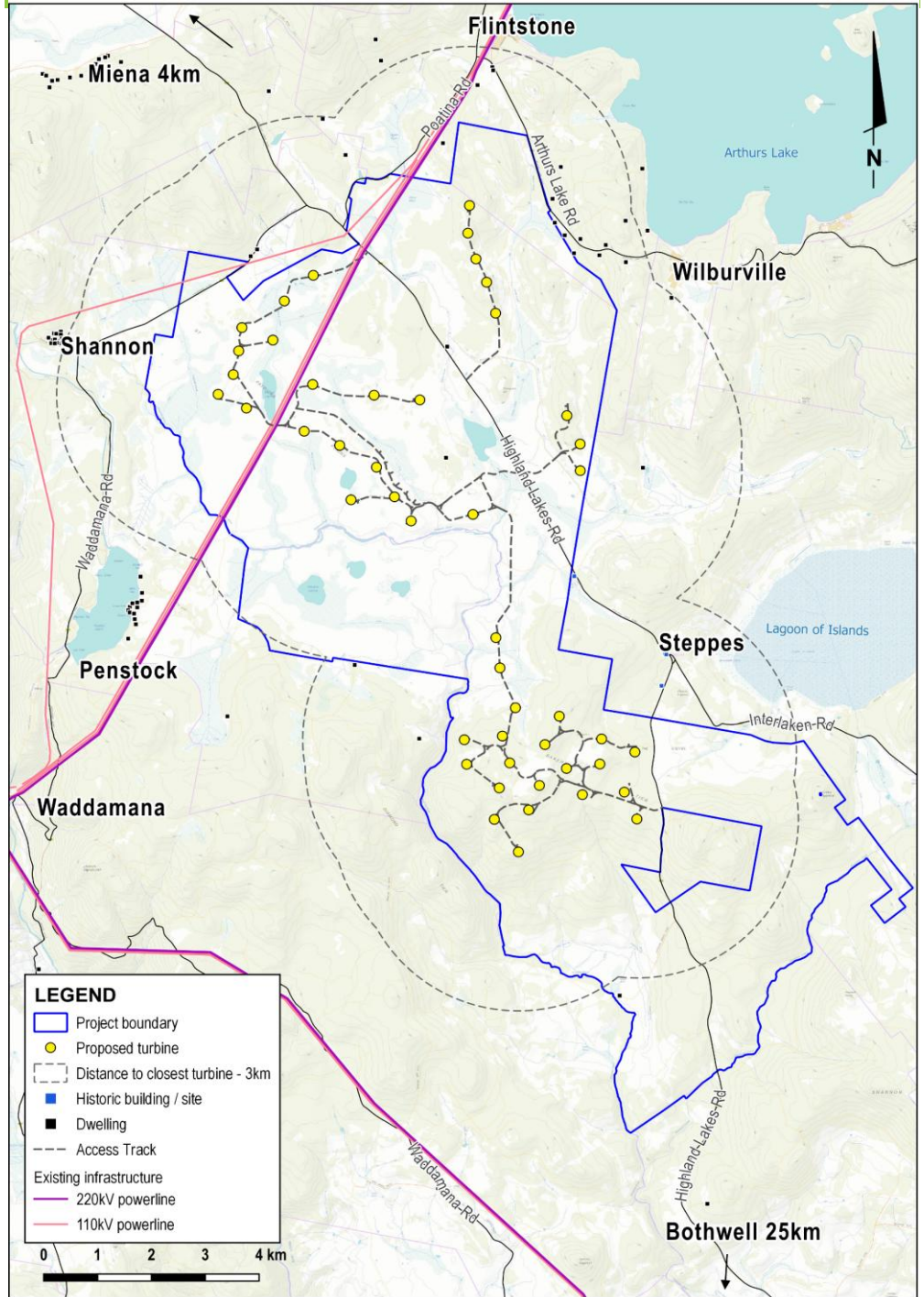
- Up to 47 wind turbines.
- Wind turbine tip height of 231 m.
- Up to 300 megawatts of renewable energy.
- Up to 200 jobs during construction.
- Up to 20 full-time jobs during operation.
- Construction period of 24 months.
- Community benefit funds for the life of the wind farm.

Planning & assessment

The Development Application was determined by the Tasmanian Civil & Administrative Tribunal (TASCAT). Approval was also granted by the Commonwealth Government under the *Environment Protection and Biodiversity Conservation Act 1999* (EPBC Act).

- 1
Site selection and preliminary investigations
✓
- 2
Referral to the Australian Department of Climate Change, Energy, the Environment and Water (DCCEEW) under the EPBC Act.
* Determined a Controlled Action with assessment by the Environment Protection Authority Tasmania (EPA) under bilateral agreement (Ref 2019/8497).
✓
- 3
Notice of Intent lodged with the EPA
✓
- 4
Project Specific Guidelines for the EIS issued by the EPA
✓
- 5
Studies, assessments, site design
✓
- 6
Preparing EIS for lodgment
✓
- 7
Development application (DA) and EIS submitted to Central Highlands Council
✓
- 8
EIS referred by Council to the EPA
✓
- 9
EIS on exhibition for public comment
✓
- 10
Responses to submissions and EPA request for additional information.
✓
- 11
Assessment by the EPA
✓
- 12
If approved, EPA conditions provided to Council
✓
- 13
Assessment by Council
✓
- 14
Decision by Council - Approved
✓
- 15
Council decision appealed to TASCAT
✓
- 16
Decision by TASCAT - Approved
✓
- 17
Decision by DCCEEW
✓

St Patricks Plains Wind Farm site map



More information

Visit - The St Patricks Plains Information Centre in Bothwell will continue to operate and be open on Fridays from 10am to 1pm or by appointment: St Patricks Plains Wind Farm Information Centre, 16a Patrick Street, Bothwell, 7030.

Phone - There is a new phone number for project enquiries: 1800 571 245

Email - The email address for enquiries remains the same: info@stpatricksplainswindfarm.com.au

Website - The project website address remains the same: stpatricksplainswindfarm.com.au



Scan QR code to visit the project website