

## **Burrendong Wind Farm**

### **Community Consultative Committee (CCC)**

TIME / DATE: 12:00- 13:30, Thursday 28 May 2026

VENUE: Horatio Hotel, 15 Horatio Street, Mudgee NSW 2850

ATTENDEES:

Chairperson: Garry West (GW)

Community Members: James Mort (JM), Brad Bliss (BB), Justin Gard (JG) MS Teams

Council Representatives: Cr Rod Pryor (RP) (Mid-Western Regional Council), Cr Richard Ivey (RI) Dubbo Regional Council

Ark Energy Representatives: Andrew Wilson (AW), Jane Ewers (JE)

Minute Taker: Garry West

1. Apologies: Nil
2. Welcome
  - Chairperson opened the meeting with an Acknowledgement of Country and welcomed everyone to the meeting. Mr West noted that there had been no response from several previous CCC members and will have to review membership.

#### 3. Minutes of Previous Meeting

Minutes of the previous meeting in 2023 had been circulated and accepted and will be uploaded to the project website and explained a misunderstanding of the departments policy on CCC's resulted in no meetings in 2024 & 2025.

#### 4. Correspondence

NIL

#### 5. Project overview

- JE gave general update on the project being located east of lake Burrendong, in the Central West Orana Renewable Energy Zone (REZ) and spanning two Councils, Mid-Western Regional Council (MWRC) and Dubbo Regional Council (DRC). Grid connection to the Transgrid network which is the existing Wellington to Mt Piper 330kV transmission line. Port to site Oversize/overmass (OSOM) route follows the EnergyCo Port to REZ upgrades from the Port of Newcastle to Elong Elong.
- The Project is 30km west of Mudgee consisting of 70 wind turbines displacing 900,000 tonnes of CO<sub>2</sub> from the NSW energy supply, reducing reliance on coal. Clean energy to power ~247,000 average NSW households annually, and ~250 FTE jobs during peak construction and 12 operational roles. A community benefit fund (\$1,050/MW or ~\$470,000 p.a. CPI indexed) split 50/50 between DRC and MWRC via Voluntary Planning Agreements. Providing a diversified income stream for rural landholders and neighbours and contributing to Australia's 33,000 GWh annual renewable energy target.
- In 2022 the Project was determined an EPBC controlled action with assessment under the bilateral agreement requiring State and Federal approval. The EIS was on public exhibition from 16 November to 13 December 2023 on the DPE Major Projects Portal and received >50 unique objections, meaning the approval will be determined by the Independent Planning Commission (IPC). April 2026 the Response to Submissions (RtS) and the Amendment Report were lodged with the Department of Planning, Housing and Infrastructure (DPHI).
- Requests for Further Information (RFIs) have been received from DPHI and agencies regarding specialist reports. The assessment and recommendation is expected in ~Q3 2026, with determination by the IPC ~ Q3/Q4 2026 and EPBC approval by DCEEW in ~Q4 2026.
- 243 submissions were received, DRC and MWRC along with 10 organisations and 231 individual submissions. Objecting submissions consisted of 16.9% local , 19.9% regional and 63% broader community. Supporting submissions, 50% regional community and 50% broader community.
- The Project amendments and refinements, following revised & additional studies, consist of:
  - Removal of the northern transmission line option.

- Amendments to the transmission line alignment.
- Refinement of turbine and track access locations.
- Amendments to site access and road upgrades.
- Inclusion of a temporary workers accommodation facility; and
- Reduction in impacts and disturbance footprint.

(A copy of the Project Layout is attached to the minutes.)

- The on-site temporary workers accommodation facility (TWAF) will, reduce demand on local housing stock and accommodation services, support local employment and business engagement opportunities, enhance construction efficiency through reduced travel times and improved logistics and reduce local peak-hour traffic impacts by ~ 80% compared to no TWAF.
- The TWAF will accommodate 100% non-local workforce and up to 250 beds. Will include a site office, first aid room, amenities including kitchen and laundry, leisure facilities, water and sewerage treatment plants, parking including for heavy vehicles and a laydown area.
- BB noted that the proposed TWAF site contains numerous Aboriginal artifacts which were not recorded in the revised Aboriginal Cultural Heritage Assessment (ACHA). AW advised this will be reviewed in light of the advice.
- RP asked if a concrete batching plant will be utilised or will there be a massive movement of trucks from Wellington or Mudgee? JE advised a batching plant will be part of the wind farm to provide the concrete foundations for the wind turbines
- The revised Biodiversity Development Assessment Report (BDAR) was the result of further bird and bat utilisation surveys to inform mitigation and management measures. Refinements lead to a reduction of impact to box gum woodland (critically endangered ecological community) from 112.4 ha to 74.5 ha. Additional threatened flora and fauna surveys and expert reports to inform avoidance, mitigation and management measures were undertaken. These have resulted in the project site being reduced from 29,176 ha to 26,933 ha (reduction of 7.7%), the development corridor reducing from 3,059 ha to 1,317 ha (reduction of 56.9%), a reduction in the development footprint from 855 ha to 741 ha (reduction of 13.3%).
- RI asked what biodiversity offset options were under consideration, stressing the need to keep the benefits local. JE advised that there are four options for meeting the biodiversity offset obligations. The project is currently considering a proposal for a Strategic Offset Delivery Agreement (SODA) from the NSW Department of Environment and Heritage.
- Realignment, resurfacing and sealing of Twelve Mile Road, Yarrabin Road and Burrendong Dam Road resulting in ~ 40 km of local road improvements and three intersection upgrades.
- Portions of the roads are currently on privately owned land, outside the boundaries of the gazetted road reserve and portions of existing road reserve will need to be

widened to accommodate the proposed road upgrades. A Memorandum of Understanding (MoU) with MWRC has been agreed resulting in the proponent coordinating the opening and closing of the affected sections of the road reserve prior to carrying out the road upgrades.

#### Next Steps

- Ark to respond to the RFIs from DPHI and agencies. DPHI assessment and recommendations to the IPC are next.

#### Post Approval / Pre Construction ~ Q1 2027 to Q1 2028

- Activities include procurement, detailed design, preparation of Management Plans and Strategies according to the development consent conditions with construction between ~ 2028 to 2030.

#### JE provided an overview of Australia's energy transition

- Renewables now supply on average ~ 43% of electricity, with peak contribution of more than 78%. 38% of Australia's coal stations have closed since 2012 and about 2,800 km of new and upgraded transmission lines are currently being delivered in five projects

#### 6. General Business

- RI sought advice on the detail of the Voluntary Planning Agreement (VPA) with the Councils. AW advised that agreement drafting hadn't been finalised, but that key terms had been agreed with DRC & MWRC, including the 50/50 split.
- JM noted that land-based communications in the project area were not good and asked what is proposed to facilitate the construction in a safe manner. JE & AW advised a temporary system will be establish, but the details have yet to be determined.

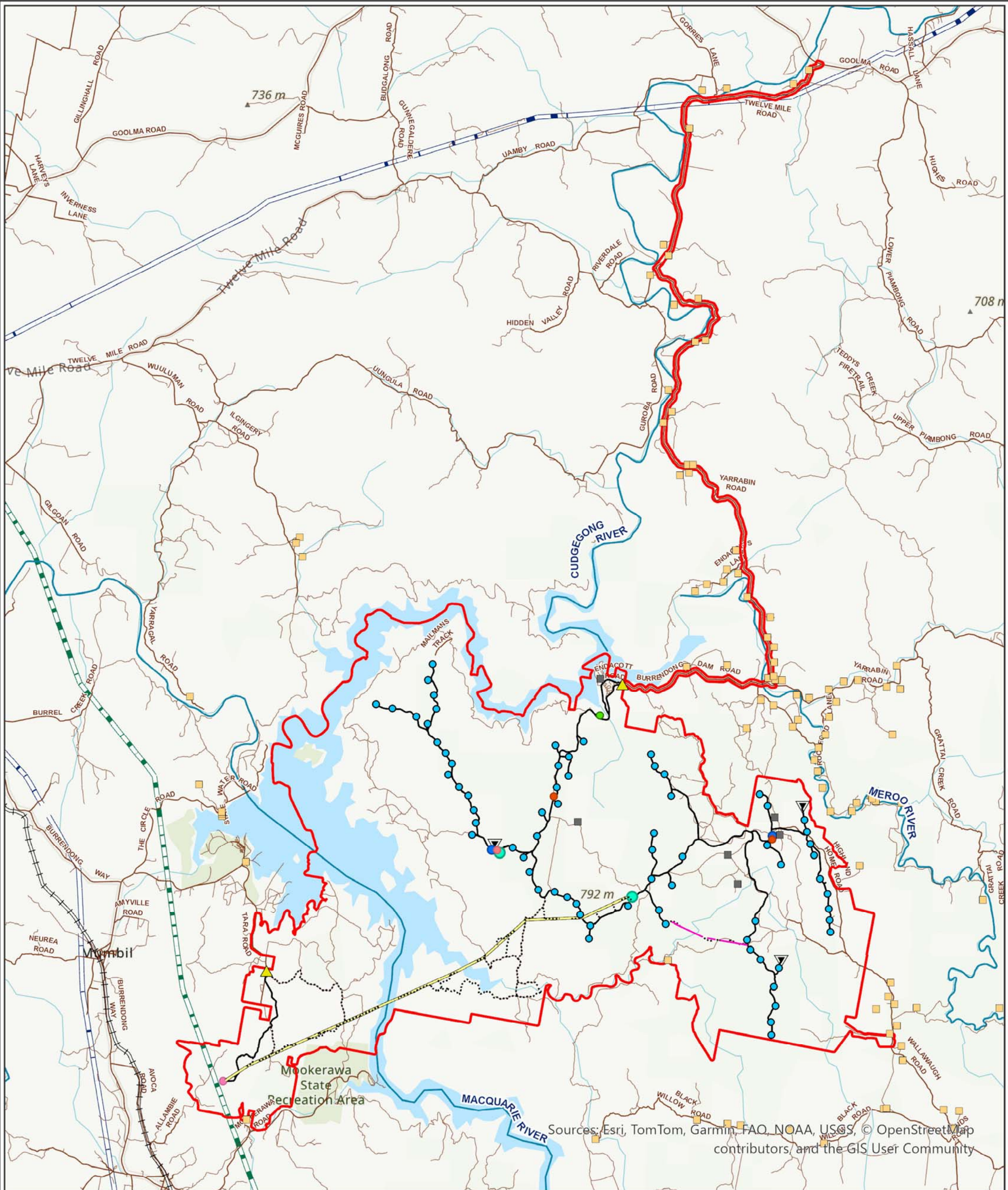
7. Next Meeting – Thursday 27 August 2026 in Mudgee. A site visit in the morning was requested to be followed by a lunchtime meeting.

## Actions

NO.	ACTIONS	ACTION BY
-----	---------	-----------

--	--	--

Meeting Closed 1:50pm



Sources: Esri, TomTom, Garmin, FAO, NOAA, USGS, © OpenStreetMap contributors, and the GIS User Community

### Project Layout (Amended)

- |   |                                     |  |
|---|-------------------------------------|--|
| Project Site (including Transport Corridor - Road Upgrades) | Sensitive Receiver - Non-associated | Construction Compound and Temporary Workers Accommodation Facility |
| Site Access   | Sensitive Receiver - Associated     | Railway  |
| Permanent Meteorological Mast                               | <b>Infrastructure</b>               | Major Watercourses   |
| Wind Turbine Generator                                      | Batch Plant                         | Roads  |
| Overhead Reticulation                                       | Construction Compound               | Existing Powerlines  |
| Powerline   | O+M Facility                        | 132 kV Line  |
| Access Track  | Substation                          | 330 kV Line  |
| Powerpole Access Tracks                                     | Switchyard                          |  |



Datum/Projection:  
GDA 1994 MGA Zone 55  
Project: 4000-EB Date: 10/03/2026

