



ARK ENERGY

Burrendong Wind Farm

CCC Meeting Project Update

Mudgee, Thursday 28 May 2026

Acknowledgement of Country

We acknowledge the Wiradjuri people as the Traditional Custodians of the land upon which we meet today, and their continuing connection to lands, waters and communities.

We pay our respects to Elders past and present.

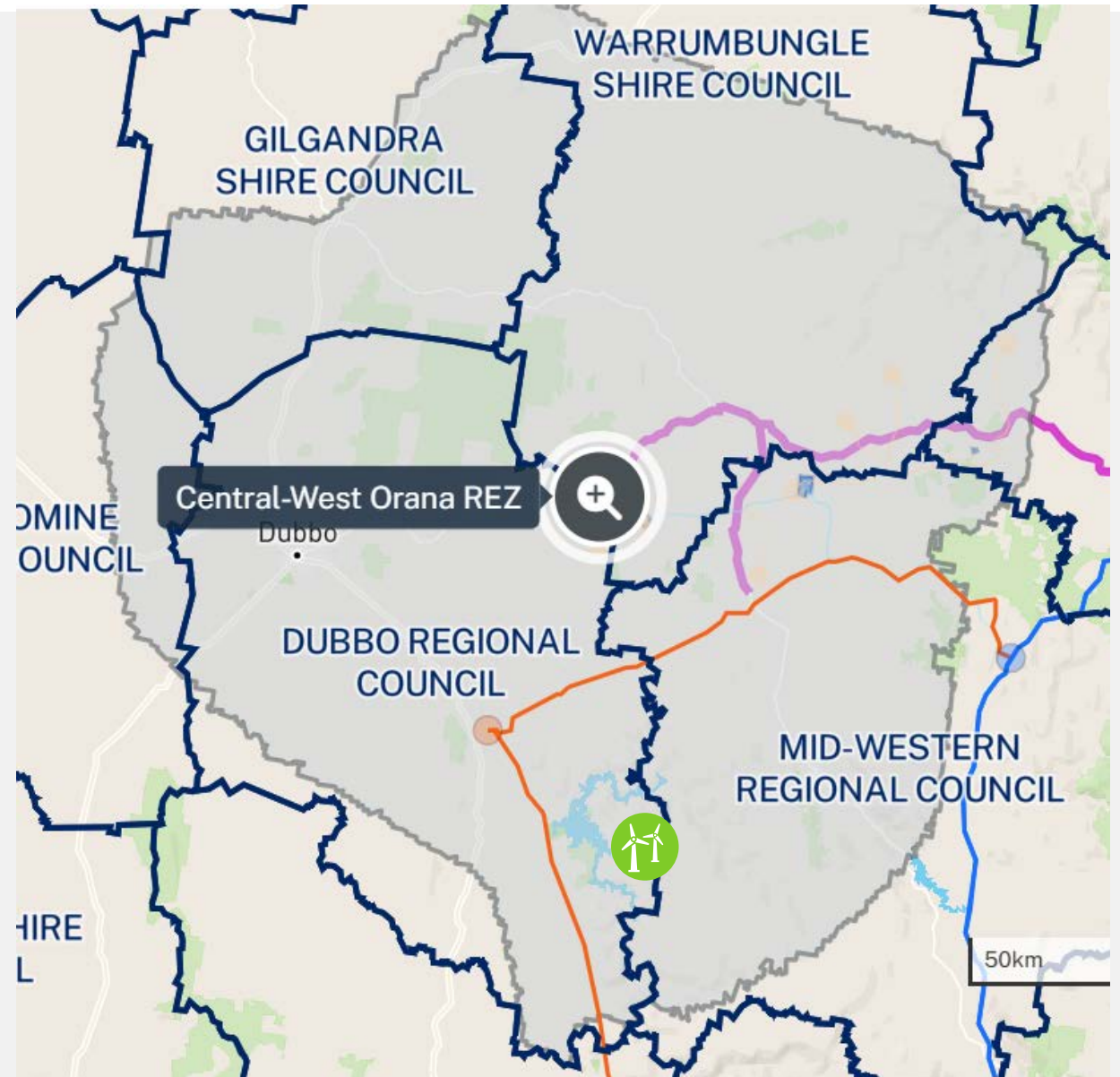
Introductions

- Andrew Wilson, General Manager Development - NSW.
- Jane Ewers, Project Officer.



Site context

- Spanning two local government areas – Mid-Western Regional Council and Dubbo Regional Council.
- Within the Central-West Orana Renewable Energy Zone (CWO REZ).
- Grid connection to Transgrid network – existing Wellington to Mt Piper 330 kV transmission line
- Proposed port to site oversize / overmass (OSOM) route follows the EnergyCo Port to REZ upgrades from the Port of Newcastle to Elong Elong and Ungula OSOM route to Gooma Rd (near Wellington).



Burrendong Wind Farm



~ 30 km west of
Mudgee, NSW



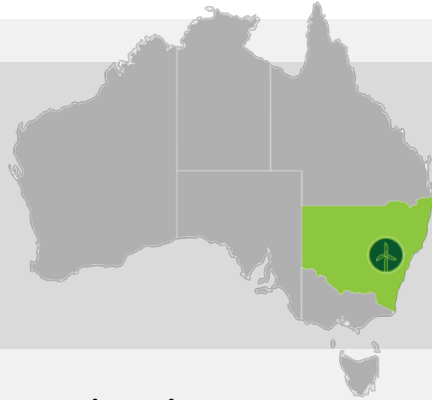
70 wind
turbines



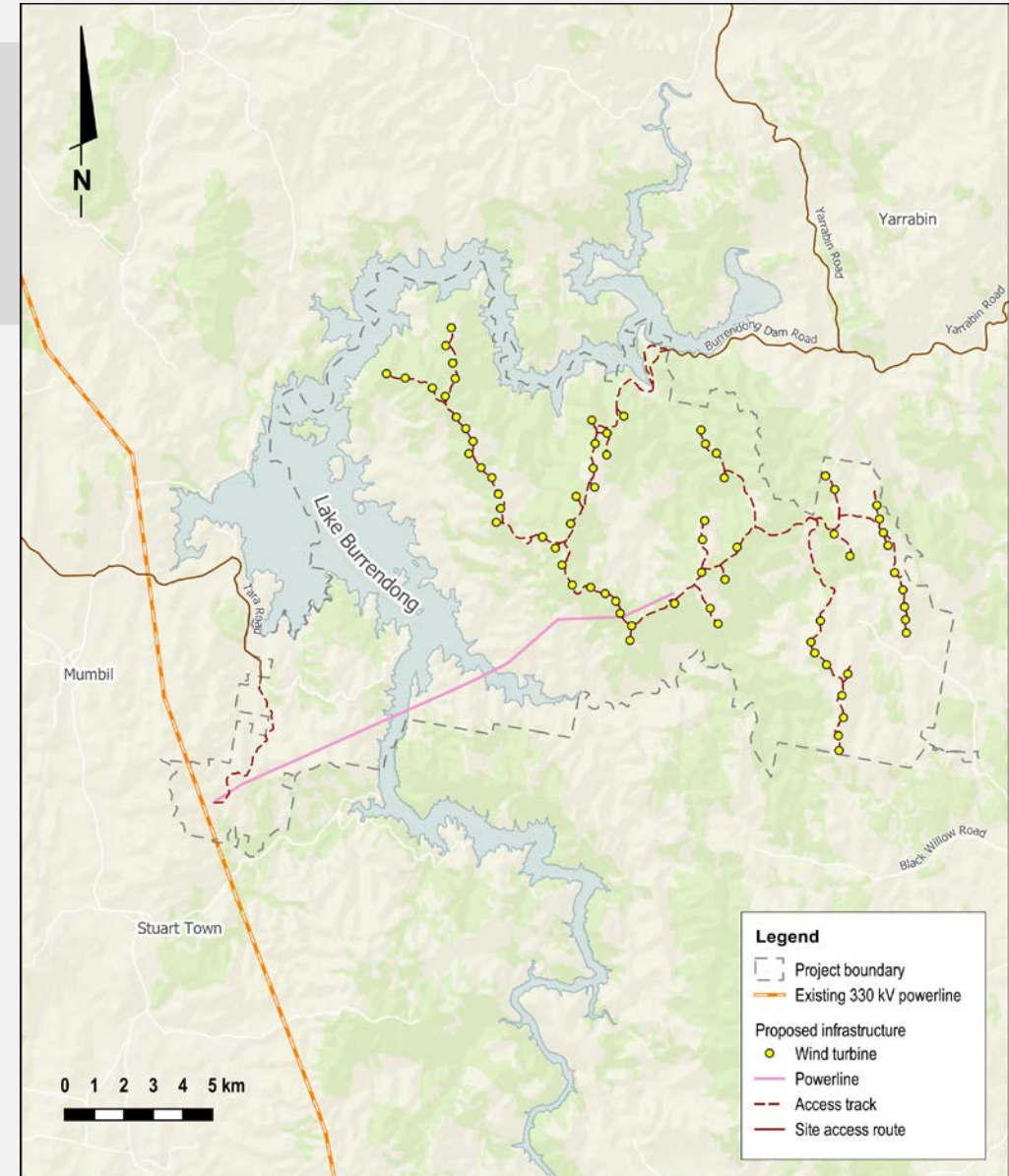
Commencement of
construction target 2028



~ 450 MW



- Displacing CO₂-e from NSW's energy supply and reducing reliance on coal fired power.
- Sufficient energy to power ~247,000 average NSW households annually.
- Estimated to require ~250 FTE jobs during peak construction and 12 ongoing roles for operations and maintenance.
- Community benefit funding of ~\$470,000 p.a. (indexed to CPI) through agreements with Dubbo Regional Council and Mid-Western Regional Council..
- Diversified income stream for rural landholders.



Assessment

- 2022 - Determined a controlled action requiring approval from the NSW Department of Housing, Infrastructure and Planning (DPHI) and the Australian Department of Climate Change, Energy, the Environment and Water (DCCEEW) , with assessment by the NSW Govt under a bilateral agreement.
- December 2023 - Environmental Impact Statement on exhibition for submissions.
 - 50 < unique objections received, so will be referred by DPHI and determined by the NSW Independent Planning Commission (IPC).
- April 2026 - Response to Submissions Report and Amendment Report lodged and accepted by DPHI.
 - Addressing Requests for Further Information (RFIs) from DPHI and agencies.



Reports and appendices available from Burrendong Wind Farm page in NSW Govt Major Projects Planning website:

<https://www.planningportal.nsw.gov.au/major-projects/projects/burrendong-wind-farm>

Next step estimates:

- DPHI assessment and recommendation ~Q4, 2026
- Determination by IPC ~Q1, 2027
- Approval by DCCEEW ~Q1, 2027



Submissions on EIS

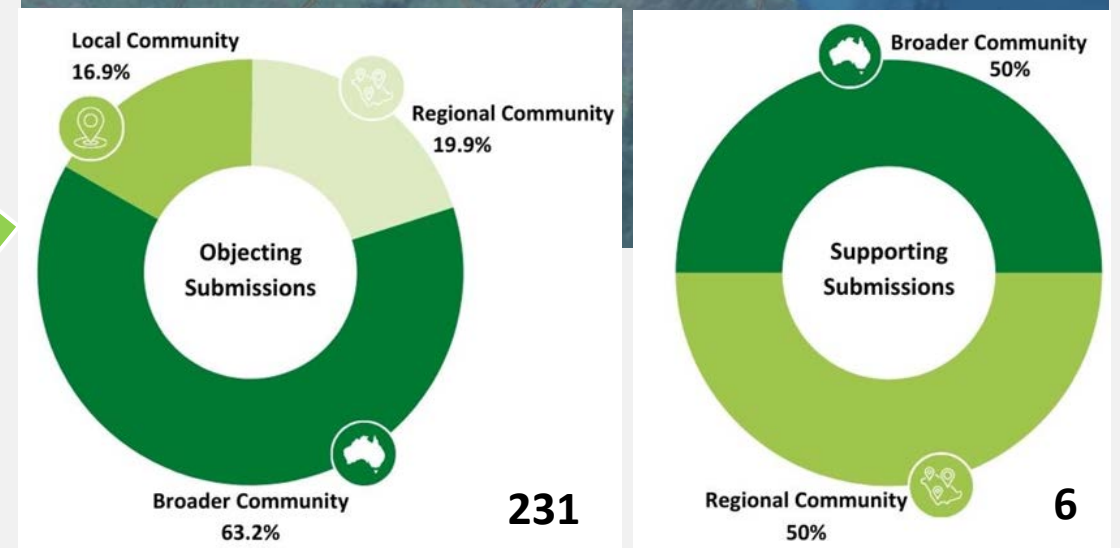
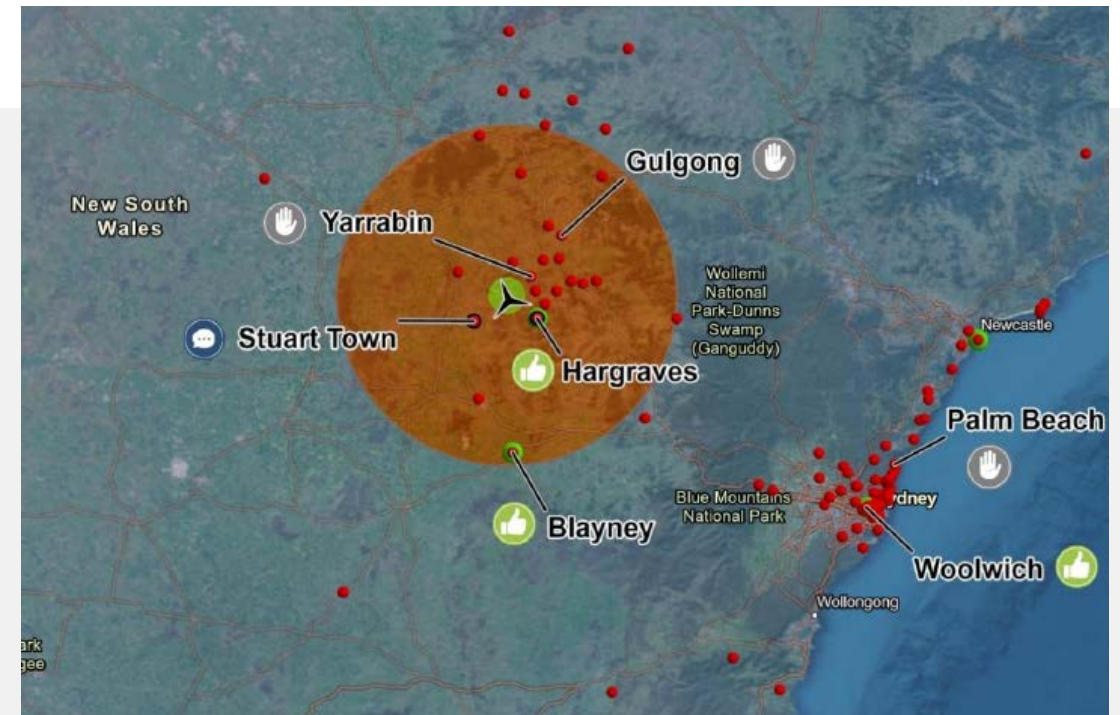
243 submissions in total:

- 2 from local government:
 - Dubbo Regional Council
 - Mid-Western Regional Council
- 241 from members of the public / organisations:
 - 10 from organisations
 - 231 from individuals

Of the 241 public / organisation submissions, 231 were objections and 6 were in support (4 were comments).

Submitters of objecting and supporting submissions were defined according to geographical location as follows:

- Local community: within ~5 km from the project site.
- Regional community: ~5 -100 km from the project site.
- Broader community: ~100 km + from the project site.



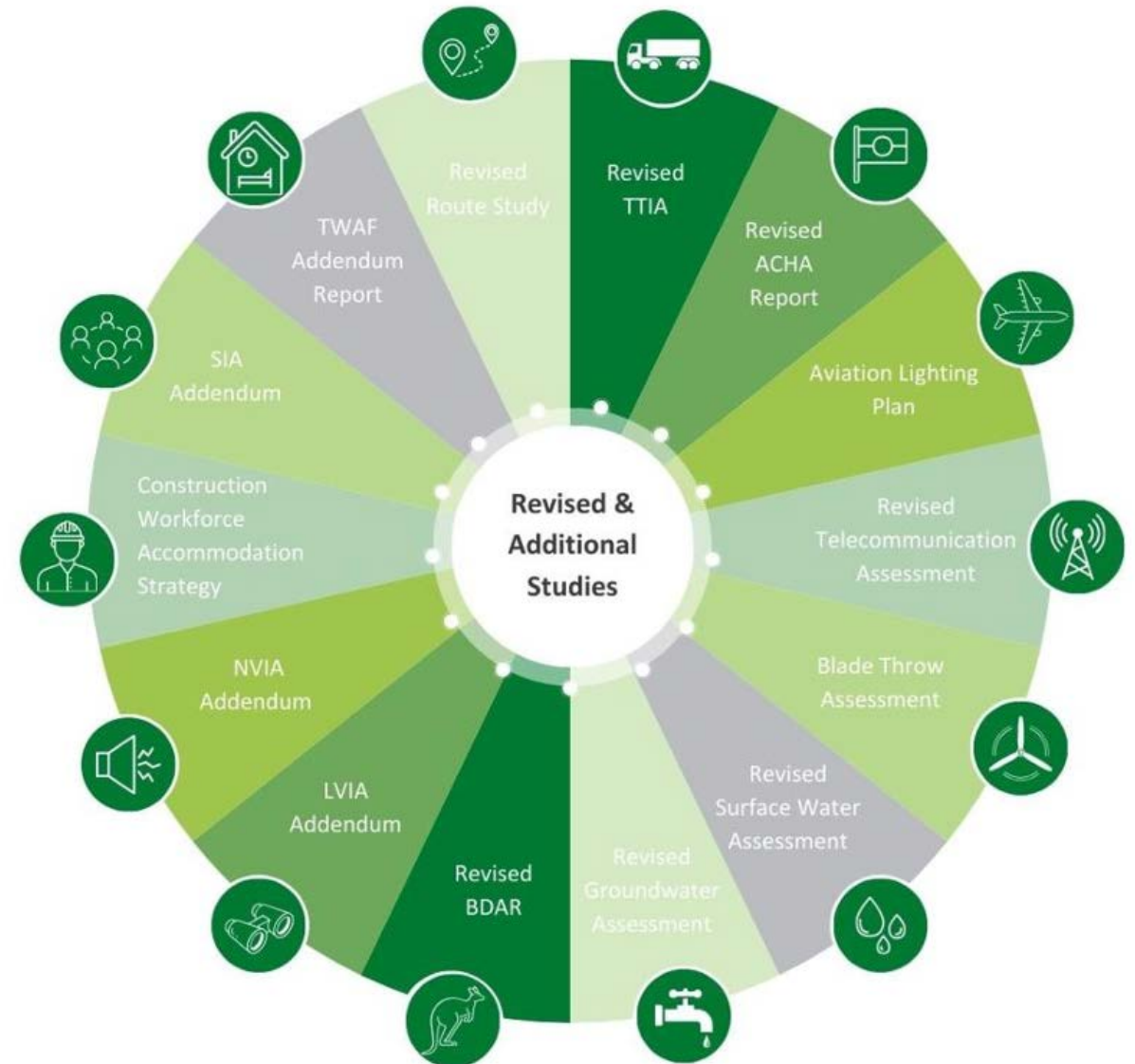
Agency submissions & advice

- Conservation Programs, Heritage and Regulation Group (CPHR), (previously Biodiversity, Conservation and Science Group (BCS))
- Civil Aviation Safety Authority (CASA)
- Department of Planning, Housing and Infrastructure (DPHI) – Hazards (previously Department of Planning and Environment (DPE) – Hazards)
- Department of Primary Industries And Regional Development (DPIRD) Agriculture (previously Department of Primary Industries (DPI) – Agriculture)
- DPIRD – Fisheries (previously DPI – Fisheries)
- NSW Department of Climate Change, Energy, the Environment and Water (DCCEEW) – Water, (previously DPE – Water)
- Environment Protection Authority (EPA)
- Fire and Rescue NSW (FRNSW)
- Heritage NSW (Aboriginal Heritage)
- Heritage NSW (Historic Heritage)
- Mining, Exploration and Geoscience (MEG) NSW
- NSW Rural Fire Service (RFS)
- Transport for NSW (TfNSW)
- Crown Lands
- WaterNSW
- UGL- Regional Linx. – Rail

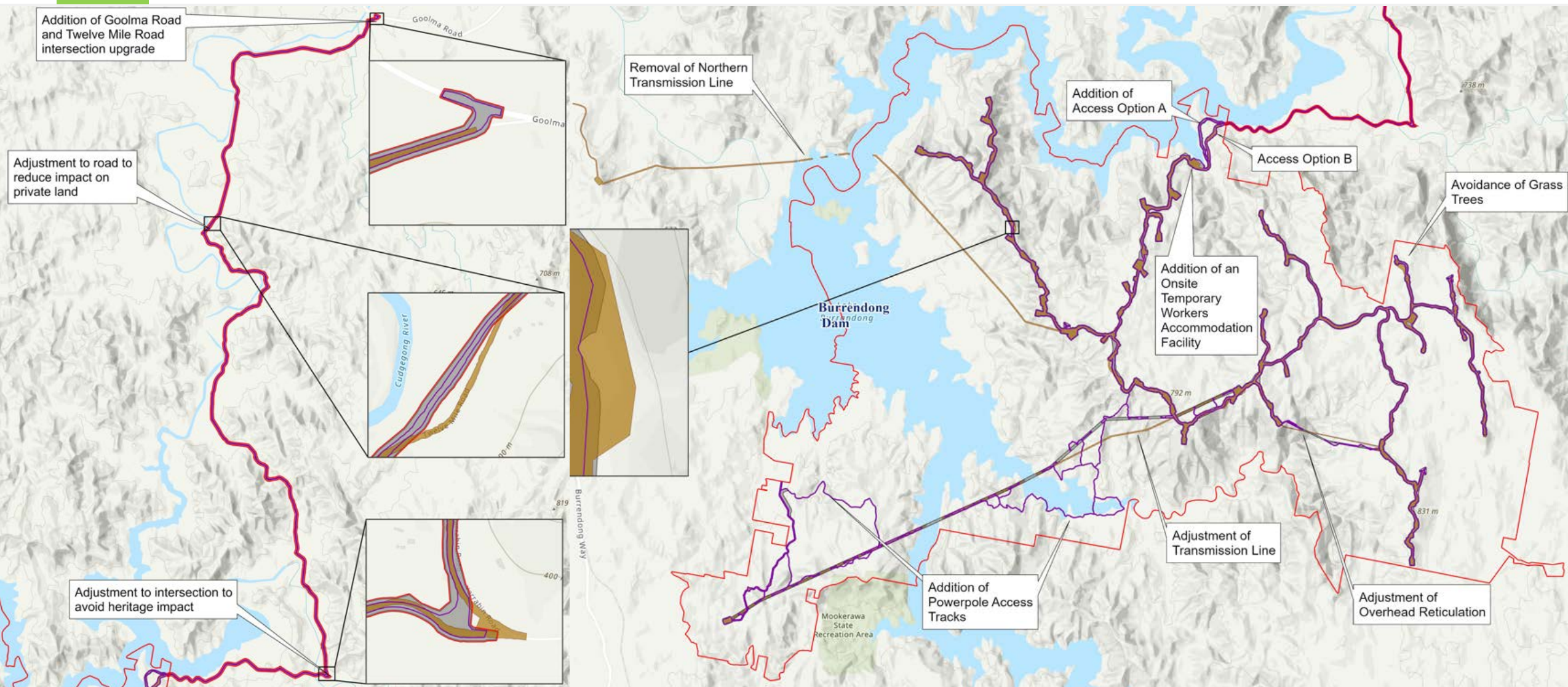


Project amendments & refinements

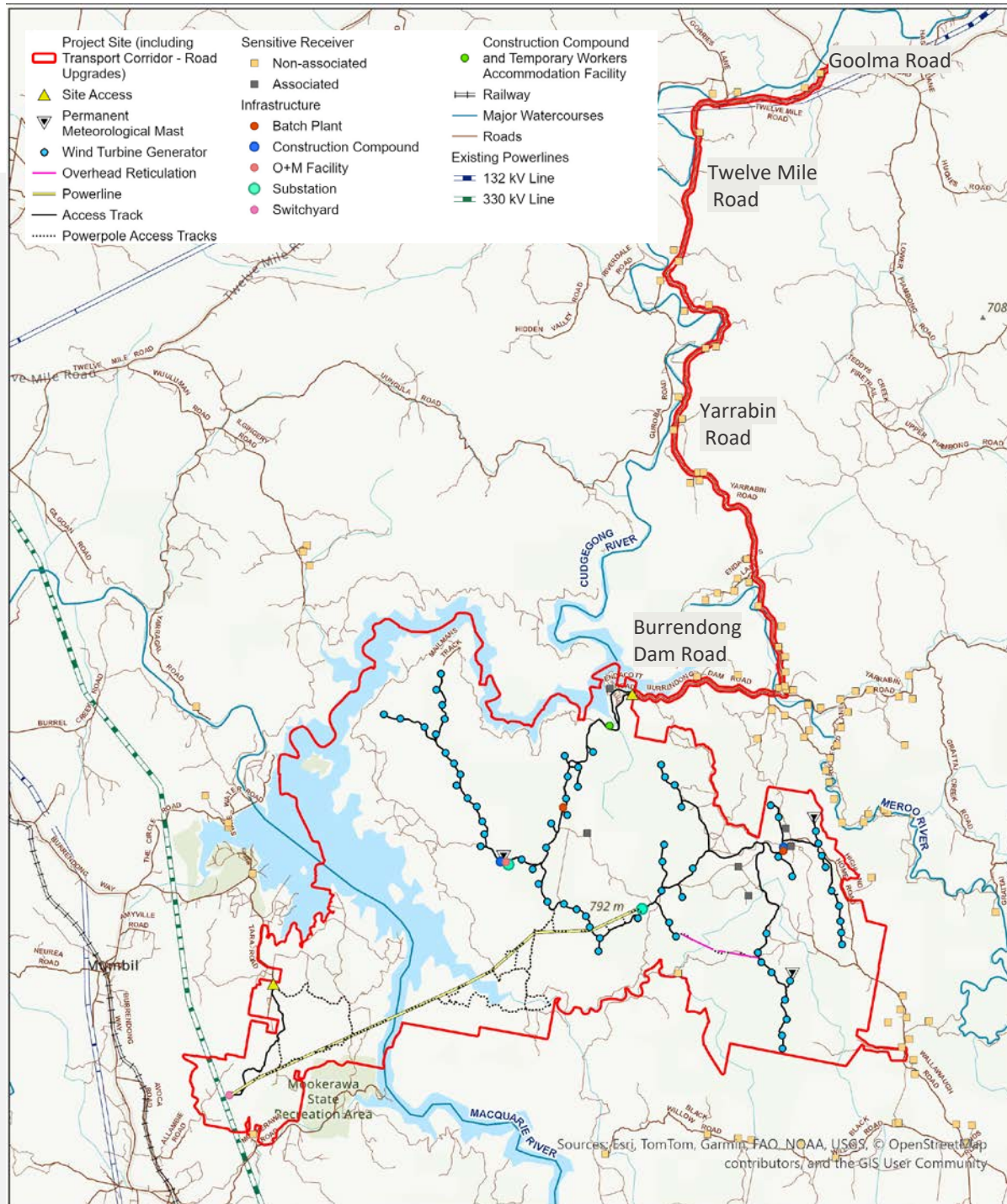
- Removal of the northern transmission line option.
- Amendments to the transmission line alignment.
- Refinement of turbine and access track locations.
- Amendments to site access and road upgrades.
- Inclusion of a temporary workers accommodation facility.
- Reduction in impacts and disturbance footprint.



Project Amendments & Refinements

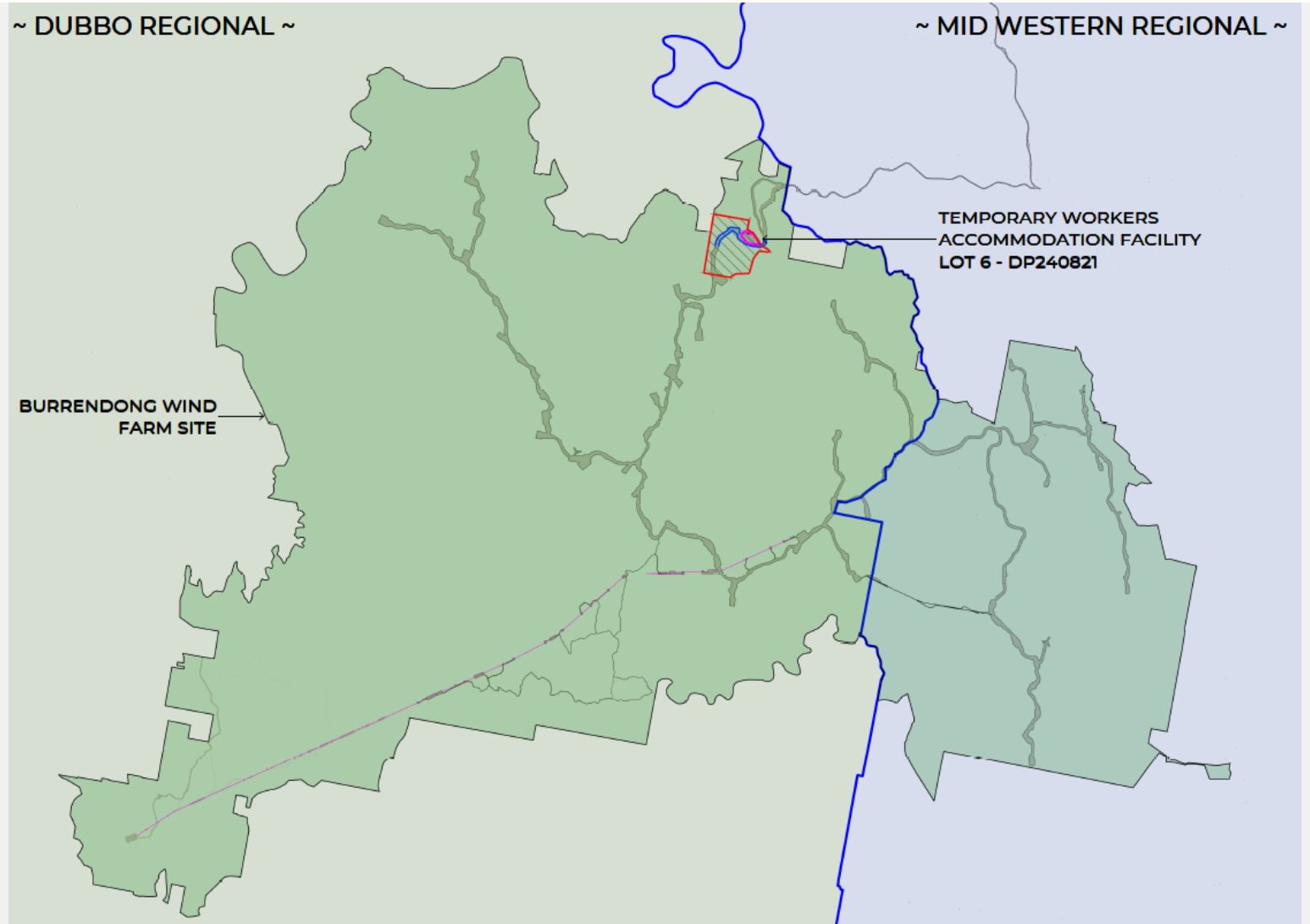


Project Layout



On-site temporary workers accommodation facility (TWAF)

- Reducing demand on local housing stock and accommodation services.
- Supporting local employment and business engagement opportunities.
- Enhancing construction efficiency through reduced travel times and improved logistics.
- Reduce local peak-hour traffic impacts by ~ 80% compared to no TWAF.



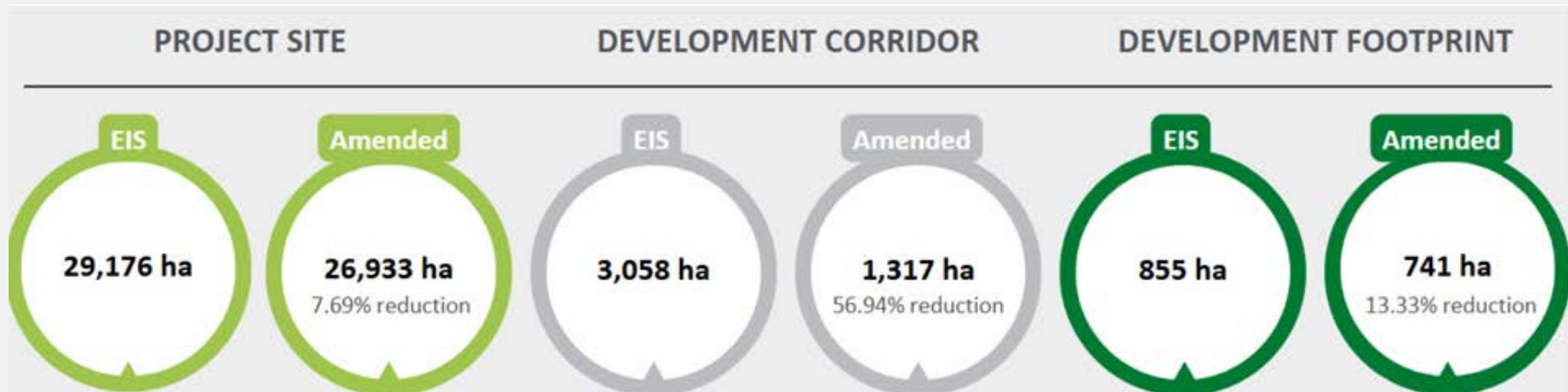
On-site temporary workers accommodation facility (TWAF)

- Accommodate 100% non-local workforce
- Up to 250 beds
- Site office including first aid room
- Amenities including kitchen and laundry
- Leisure facilities
- Water and sewer treatment plants
- Parking including for Heavy Vehicles (HV)
- Laydown area



Revised Biodiversity Development Assessment Report (BDAR)

- Further Bird and Bat Utilisation Surveys (BBUS) to inform mitigation and management measures.
 - Best practice 8 consecutive seasons (2 years) of surveys and monitoring.
- Refinements leading to a reduction on impact to box gum woodland (critically endangered ecological community) from 112.4 ha to 74.51 ha.
- Additional threatened flora and fauna surveys and Expert reports to inform avoidance, mitigation and management measures.



Local road and intersection upgrades

The project's proposed OSOM route involves ~40 km of local road improvements including:

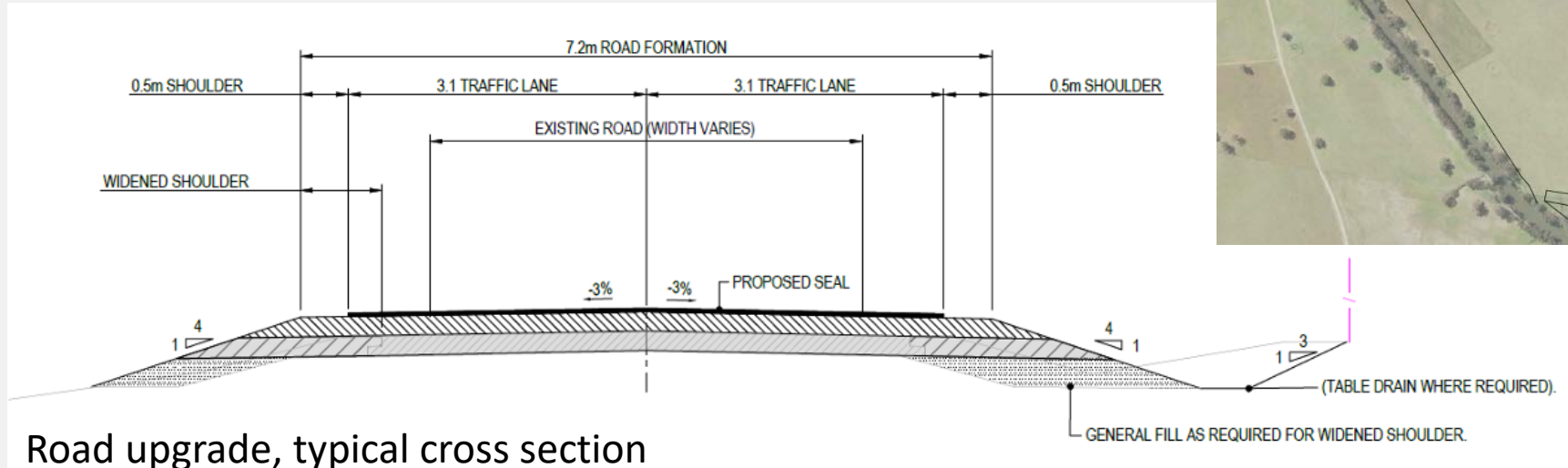
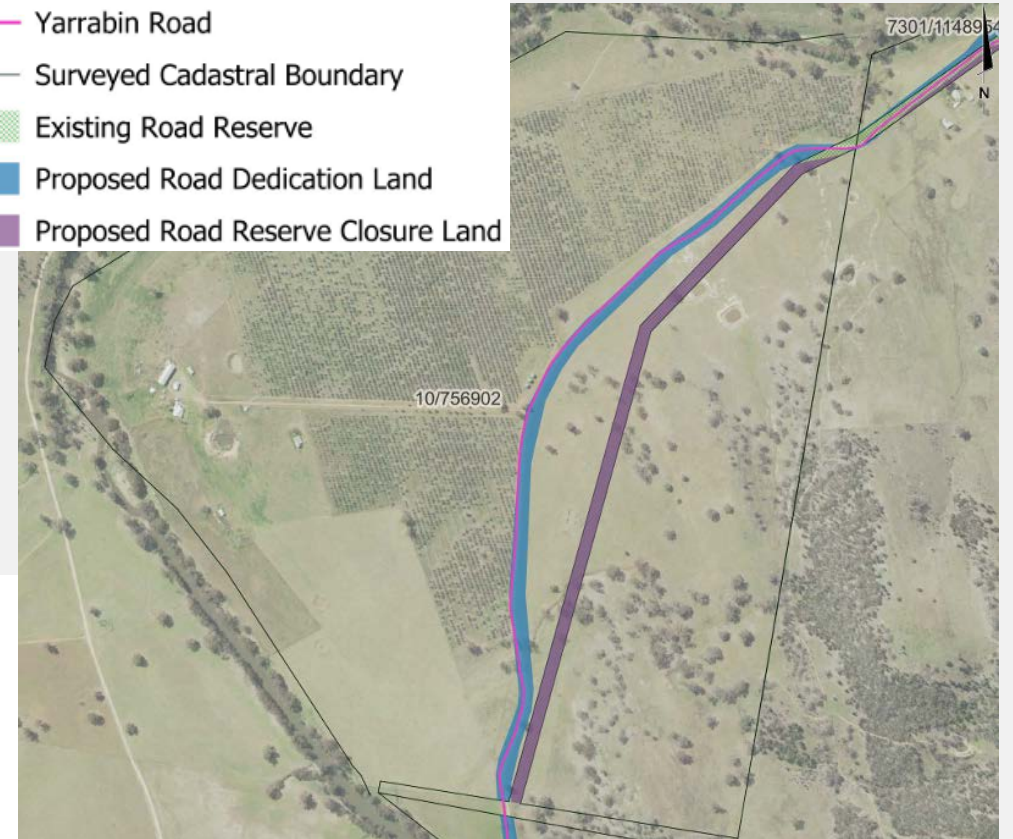
- Realignment, resurfacing and sealing of:
 - ~13 km Twelve Mile Road
 - ~20 km Yarrabin Road
 - ~7 km Burrendong Dam Road.
- Three intersection upgrades.



MoU with MWRC

- Portions of the roads are currently on privately owned land, outside the boundaries of the gazetted road reserve.
- Portions of existing road reserve will need to be widened to accommodate proposed road upgrades.
- The proponent will coordinate the opening and closing of the affected sections of the road reserve prior to carrying out the road upgrades.

- Yarrabin Road
- Surveyed Cadastral Boundary
- Existing Road Reserve
- Proposed Road Dedication Land
- Proposed Road Reserve Closure Land



Road upgrade, typical cross section



Next steps

- Ark Energy to respond to any other Requests for Further Information (RFIs) from DPHI and agencies.
- DPHI assessment and recommendation to IPC ~Q4, 2026
- State decision (IPC) ~Q1, 2027
- Federal decision (DCCEEW) ~Q1, 2027

Subject to approvals:

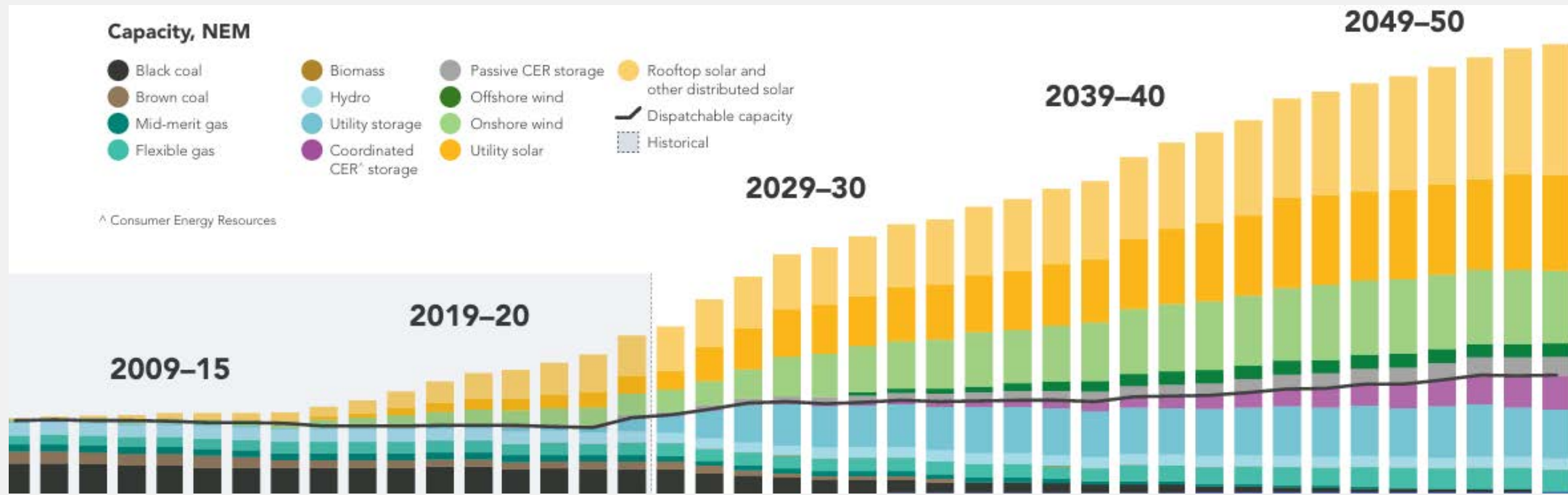
- Pre-construction ~Q1 2027 – Q1 2028:
 - Procurement
 - Detailed design
 - Preparation of management plans and strategies according to development consent conditions
- Construction ~ 2028 - 2030



Australia's energy transition

National Electricity Market (NEM):

- Renewables now supply on average approximately 43% of electricity, with peak contribution of more than 78%.
- 38% of Australia's coal power stations have closed since 2012.
- About 2,800 km of new and upgraded transmission lines are currently being delivered in five projects.



Australian Energy Market Operator's 2024 Integrated System Plan (ISP) estimate for transition of capacity in the NEM.



Retirement of Liddell power station

Retired in 2023 after 52 years of operation.

Demolished in May 2026.



The moment the chimneys at the Liddell power station were demolished. (ABC Newcastle: Amelia Bernasconi)



Thank you



Burrendong Wind Farm

T 1800 731 296

E info@burrendongwindfarm.com.au

W burrendongwindfarm.com.au



ARK ENERGY