



ARK ENERGY

Bowmans Creek Wind Farm

Muswellbrook Shire Council

Community Consultation: Energy Projects

McCully's Gap Community Hall, Wednesday, 13 May 2026

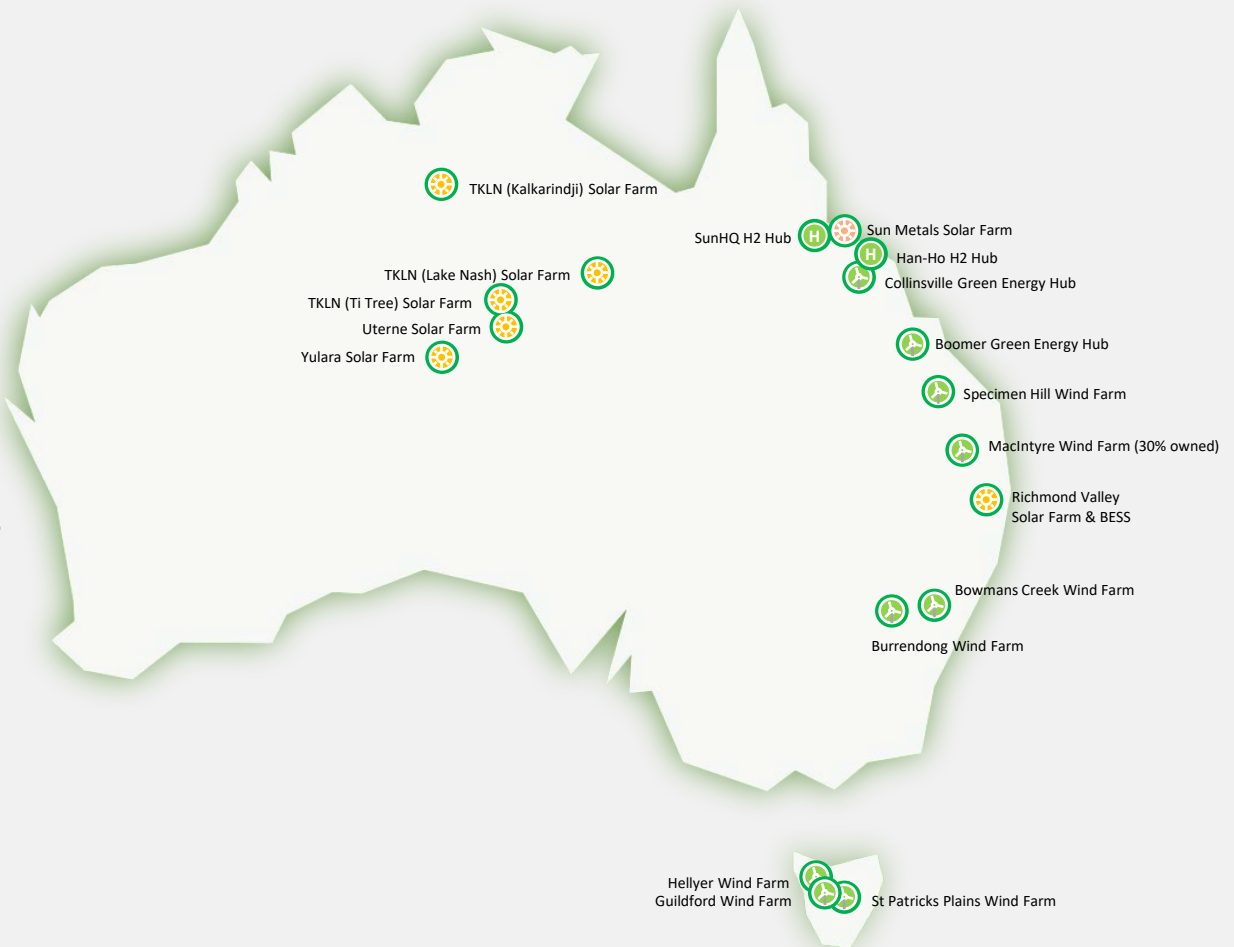
Acknowledgement of Country

We acknowledge the Traditional Custodians of the land upon which we meet and their continuing connection to lands, waters and communities.

We pay our respects to Elders past and present.

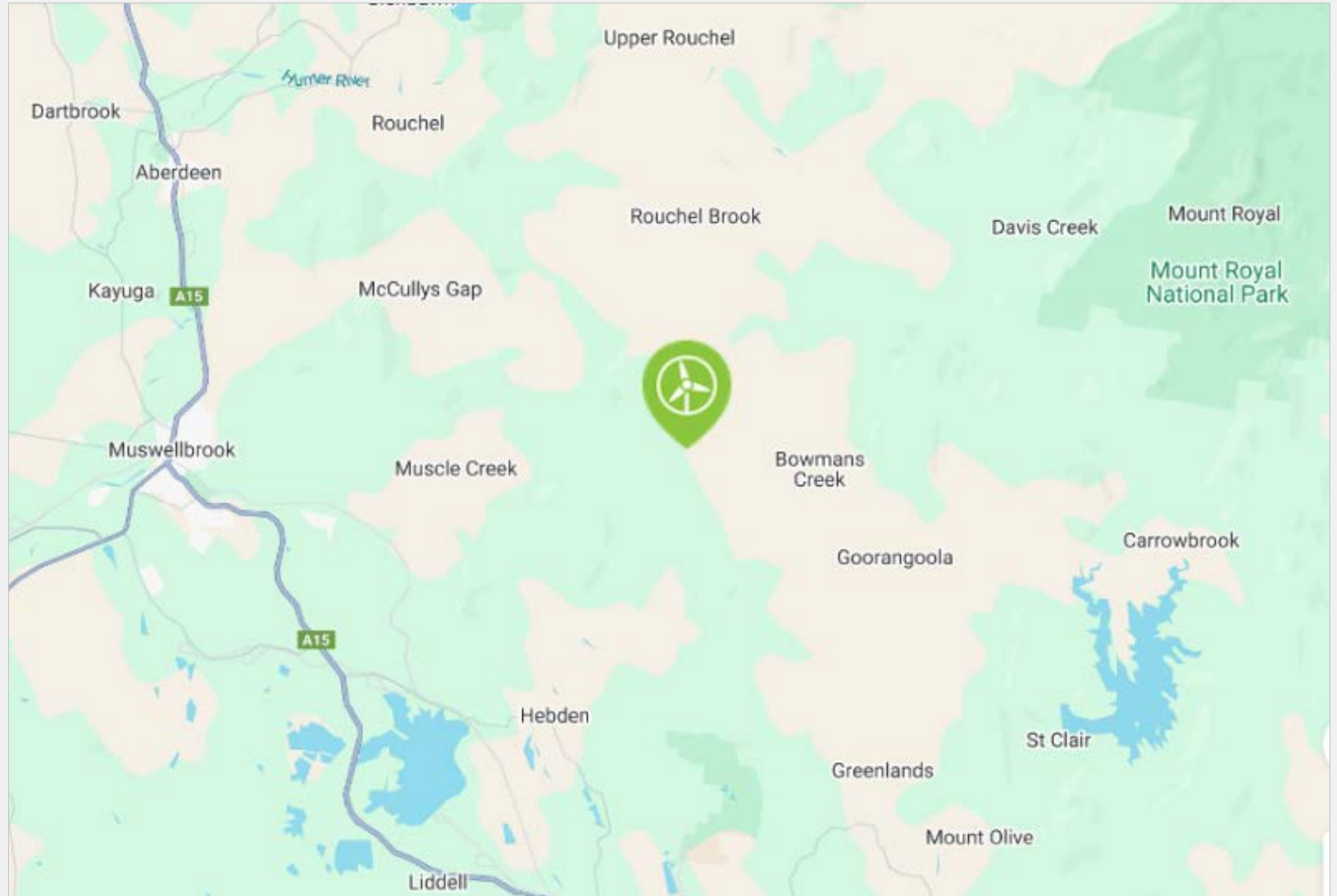
Ark Energy

- Specialising in the development and operation of utility-scale onshore wind and solar energy generation, battery storage and renewable hydrogen production.
- Signatory to Clean Energy Council's *Best Practice Charter for Renewable Energy Projects* - voluntary commitments to engage respectfully with communities, be sensitive to environmental and cultural values, and make a positive contribution to the regions in which we operate.
- Team with 20+ years experience, 12 projects in development (NSW, Qld., Tas.), operational solar assets (NT, Qld.) and 30% of MacIntyre Wind Farm in Qld.
- Australian subsidiary of Korea Zinc, first major refiner to join RE100, committed to powering global operations from 100% renewable electricity by 2050.
- Focused on decarbonising energy supply of Korea Zinc and other commercial and industrial customers, contributing to Australia's national electricity market.



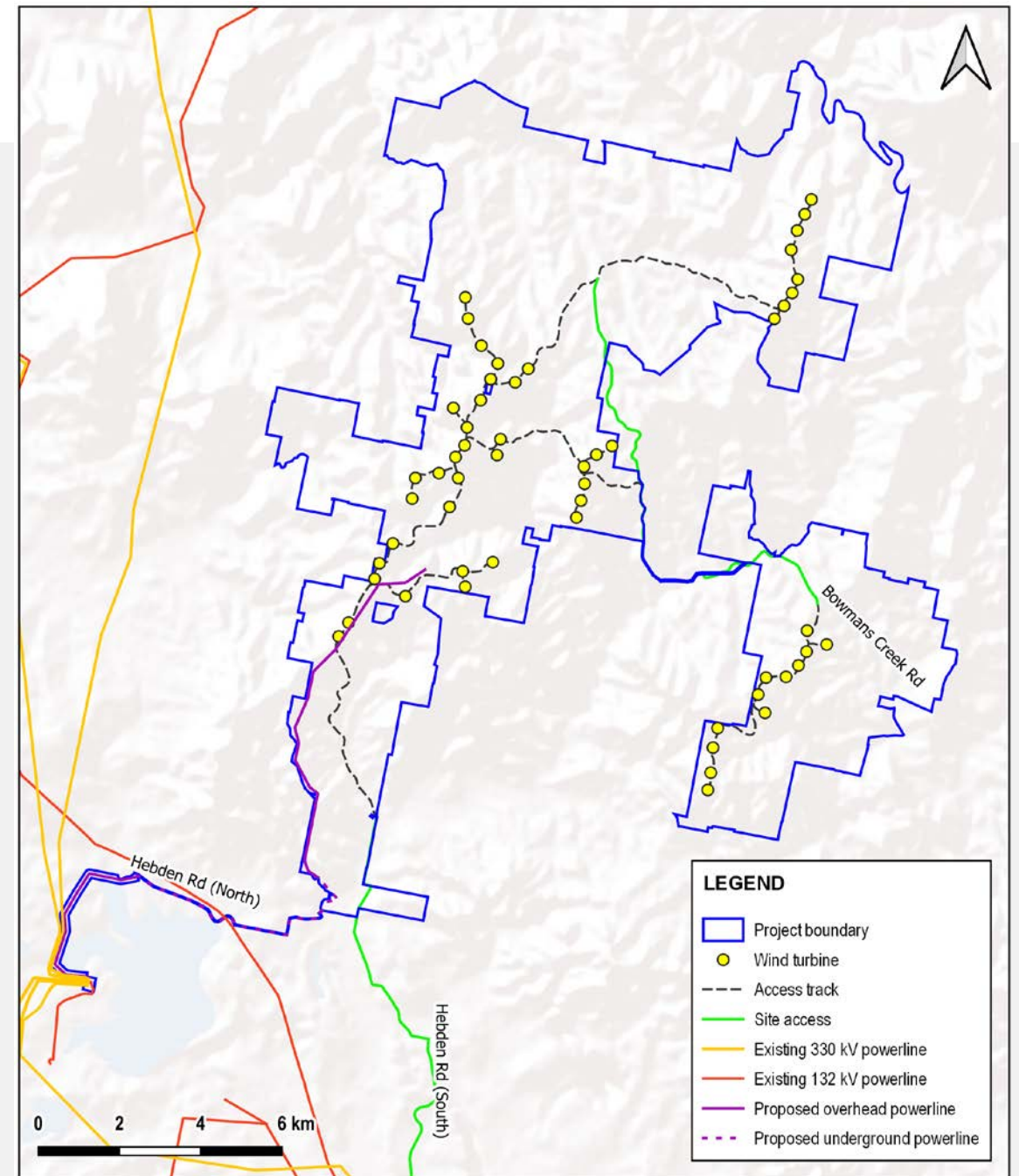
Bowmans Creek Wind Farm

- Near Bowmans Creek, about 12 km east of Muswellbrook and 21 km north of Singleton.
- Muswellbrook Shire Council, Singleton Council and Upper Hunter Shire Council areas.
- Within Hunter-Central Coast Reenable Energy Zone (REZ).



Bowmans Creek Wind Farm

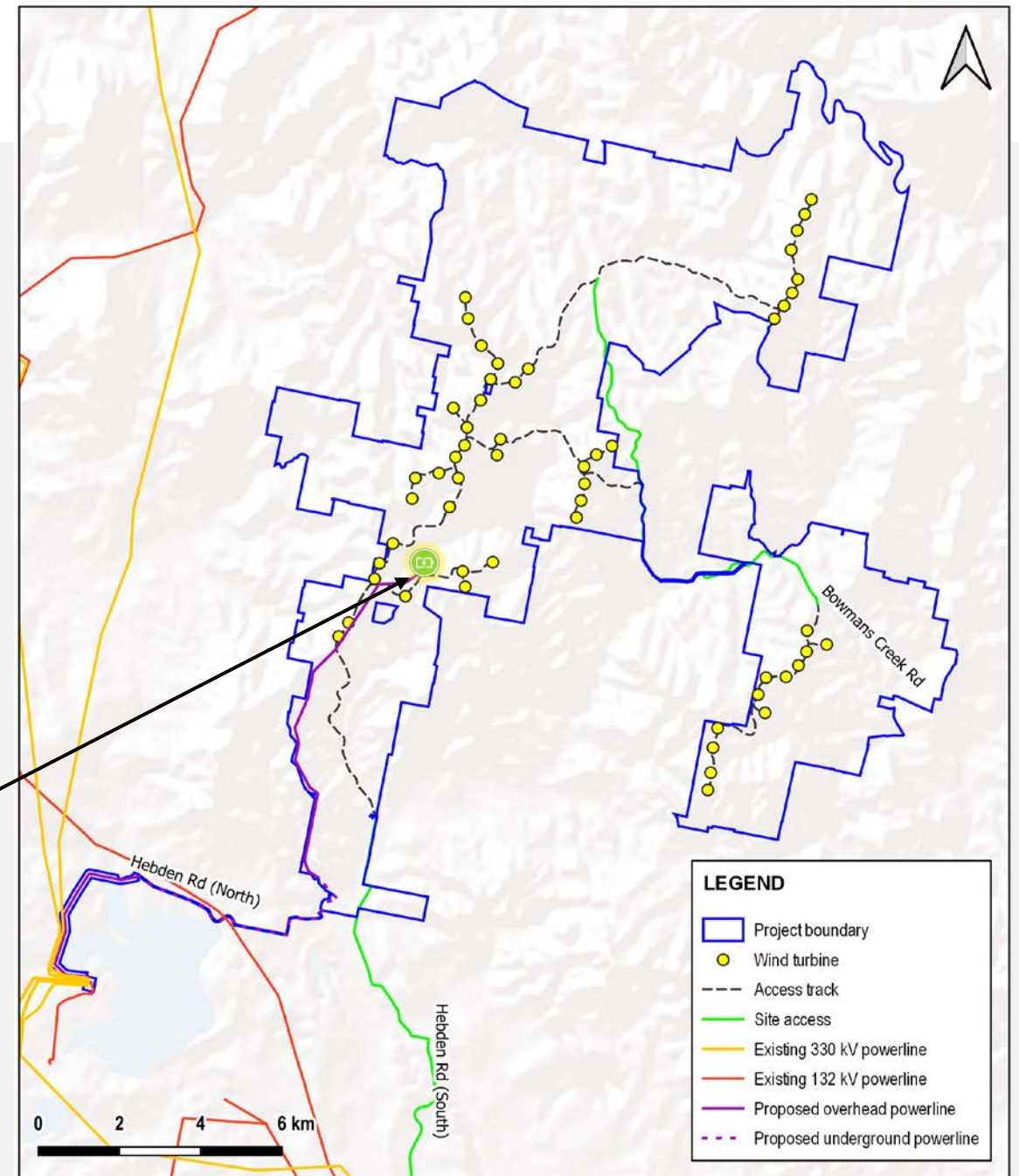
- Involves the construction, operation and decommissioning of a wind farm with up to 54 wind turbines and associated infrastructure: transmission line, grid connection to Liddell Substation.
- Generation capacity of ~ 335 megawatts.
- Approved by the NSW Independent Planning Commission in February 2024 and Australian Department of Climate Change, Energy, the Environment and Water under the *Environment Protection and Biodiversity Conservation Act 1999* in July 2024.



Modification - BESS

Proposed modification to add a battery energy storage system (BESS).

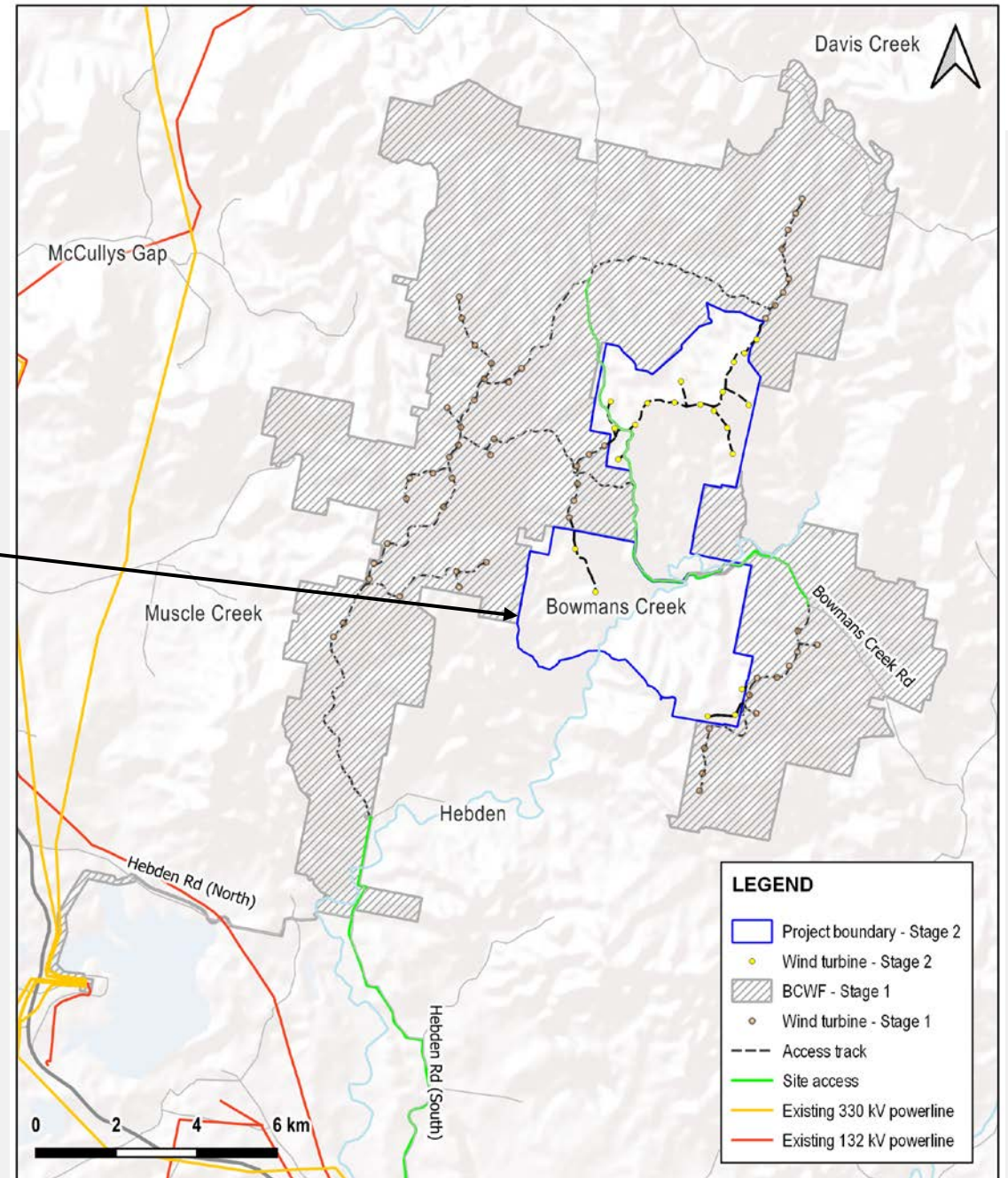
- For efficient storage of excess energy generated during peak production for use during low production periods or high demand, improving reliability and reducing energy costs.
- Within Singleton Council area.
- Nominal power capacity of up to 250 MW.
- Nominal storage capacity of up to 2,000 MWh over eight (8) hours.
- Proposed to be installed in the south-western section of the project.



Bowmans Creek Wind Farm Stage 2

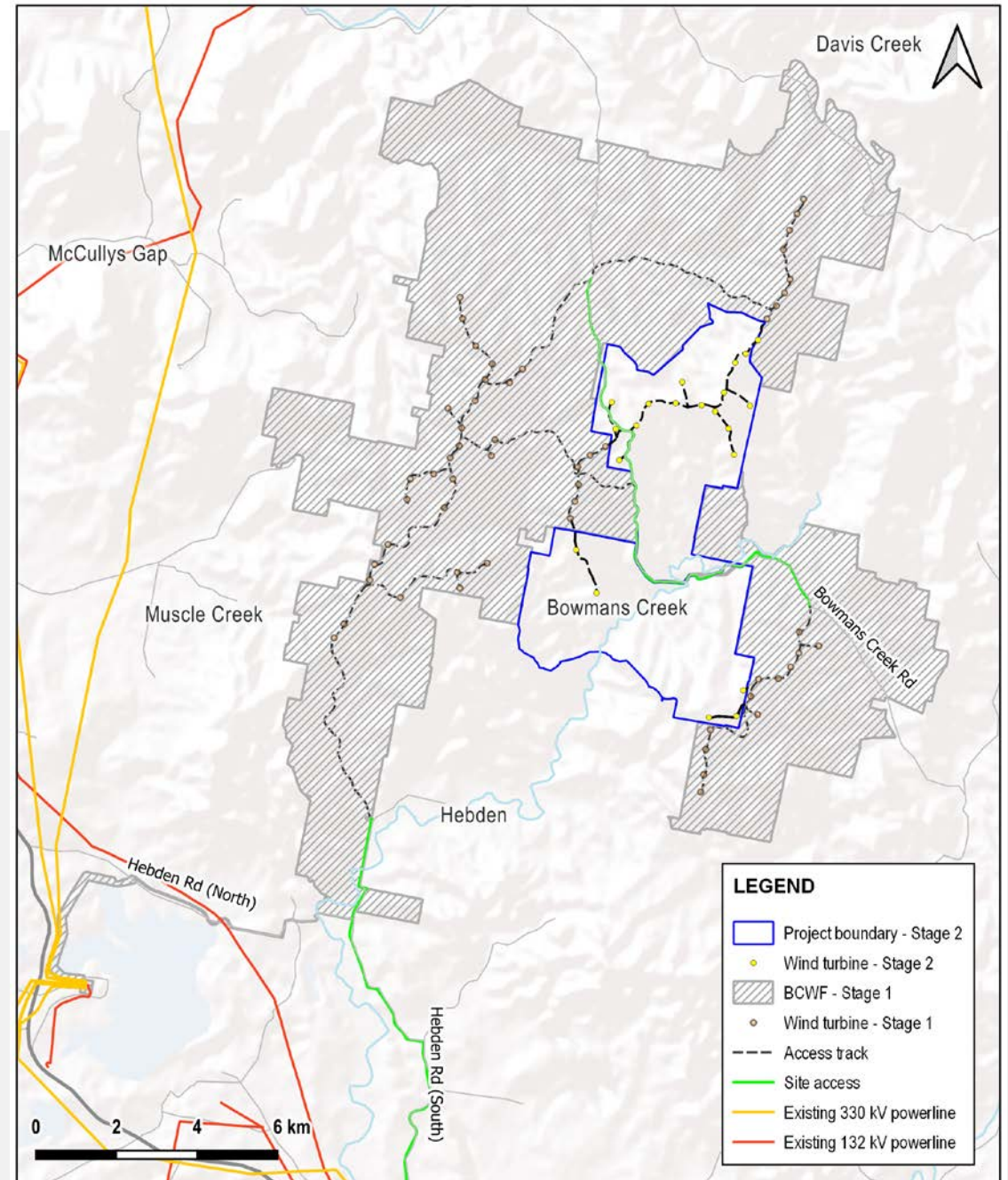
Separate development application (DA) - SSD-73123714 Will require separate Environmental Impact Statement (EIS).

- Proposal for additional 21 wind turbines to be installed on land in the centre of existing project area
- Within Muswellbrook Shire & Singleton LGAs.
- Take advantage of planned construction and infrastructure for approved Stage 1.
- Add ~120 megawatts generation capacity.
- Environmental Impact Statement – due to be submitted to the NSW Department of Planning Housing and Infrastructure in July 2026.



Bowmans Creek Wind Farm Stage 2

- Planning Secretary's Environmental Assessment Requirements for the EIS issued in May 2025.
- Referred to Australian Department of Climate Change, Energy, the Environment and Water for review under Commonwealth *Environment Protection and Biodiversity Conservation Act 1999*.
- Work for EIS is in its final draft and includes assessments for:
 - Landscape and Visual
 - Noise and Vibration
 - Biodiversity
 - Cultural Heritage
 - Transport
 - Water and Soils
 - Land
 - Hazards and Risks, such as aviation safety, telecommunications, bushfire and blade throw.
 - Social Impact
 - Economic
 - Waste



Traffic and Transport

Project will utilise preferred port and OSOM route for Stage 1, with adjustments:

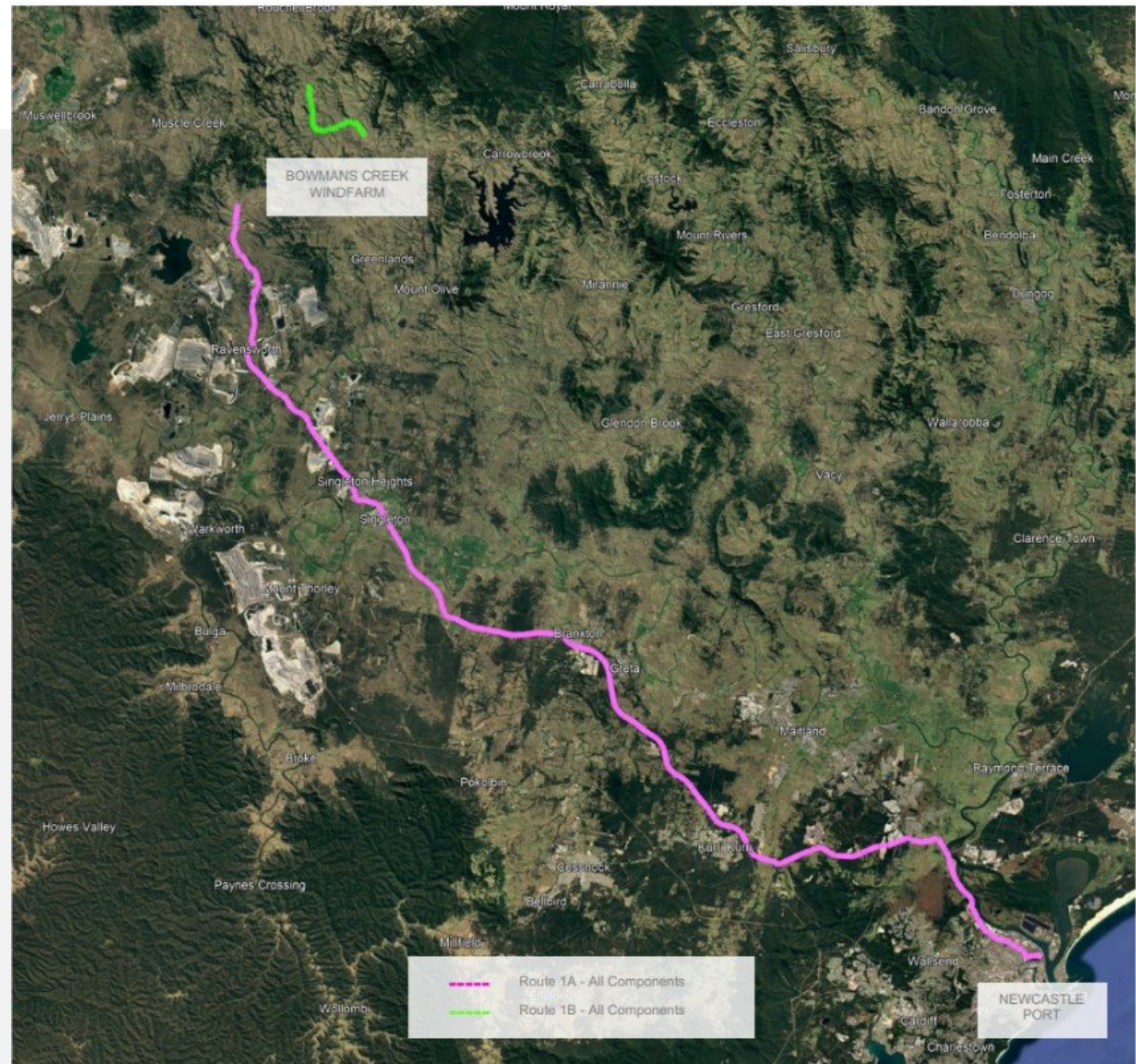
- **Port to the approved Stage 1 project site access point (Route 1A):** Port of Newcastle has been identified as the preferred port for Stage 2 OSOM deliveries, consistent with Stage 1
- **Stage 1 to Stage 2 (Route 1B):** vehicles will move internally via approved Stage 1 access tracks and connect to the public road network (i.e., Albano Road and Bowmans Creek Roads) to reach the eastern Stage 2 WTG locations

Swept Path Assessment

- Various upgrades required along Route 1A and 1B to reflect expanded WTG blades proposed for Stage 2. These offsite road work areas assessed within EIS, BDAR, ACHAR and HHIA, with associated concept designs.

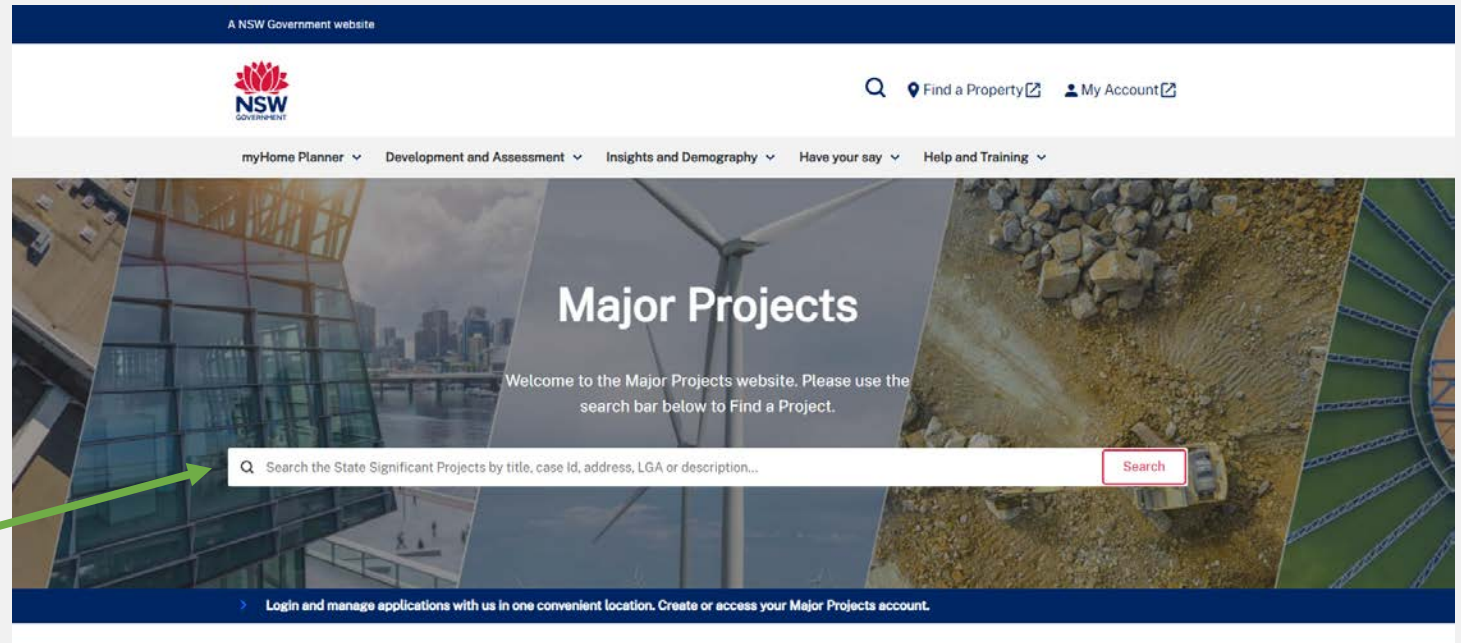
Key matters for non-OSOM

- **Intersection Performance:** Intersections operating within acceptable limits. Traffic management required at (Hebden Rd North / NE Highway) intersection during PM peak



Bowmans Creek Wind Farm Stage 2 - Assessment

- State Significant Developments are assessed by the NSW Government.
- Once the Stage 2 EIS has been lodged and deemed adequate, it will be placed on public exhibition for feedback
- The EIS will be available to be viewed at the NSW Major Projects website:
<https://www.planningportal.nsw.gov.au/major-projects/projects/bowmans-creek-wind-farm-stage-2>
- Ark Energy must respond to all submissions.
- The proposal will then be assessed and determined by the NSW Department of Planning, Housing and Infrastructure under *Environmental Planning and Assessment Act 1979 (NSW)* or NSW Independent Planning Commission.



Bowmans Creek Wind Farm Stage 2 – EIS Summary



All surveys in regard to biodiversity have been completed. The design has been refined to have with key avoidance strategies in mind.



The design has been updated to avoid impacts to threatened species as far as practicable.



Any impacts to threatened species will be carefully managed and offset.



Contribute \$260 million over construction and \$50 million over operations.



Predicted noise is below the base noise limit for all non-associated receivers.



Visual impacts at all non-associated receivers within 7,160m are measured as low or negligible.



The site is located in the border country of the Wonnarua, Geawegal & Kamilaroi tribal areas.



No Aboriginal sites have been identified within the disturbance footprint during surveys.



During peak construction expected to create 186 daily one-way trips to site (including 25 heavy vehicles).



15 road areas to be upgraded to accommodate oversized overmass traffic from the Port of Newcastle.

The Stage 2 EIS is in final draft and due to be submitted in **June 2026**.

When the EIS is placed on exhibition and published on the NSW Major Projects website, a project newsletter will be issued with a link and details of local consultation sessions.



Bowmans Creek Wind Farm

Bowmans Creek Wind Farm

SSD-10315

Approved by NSW IPC and DCCEEW for 54 wind turbines and associated infrastructure, generation capacity of 335 MW.

MOD – Battery Energy Storage System

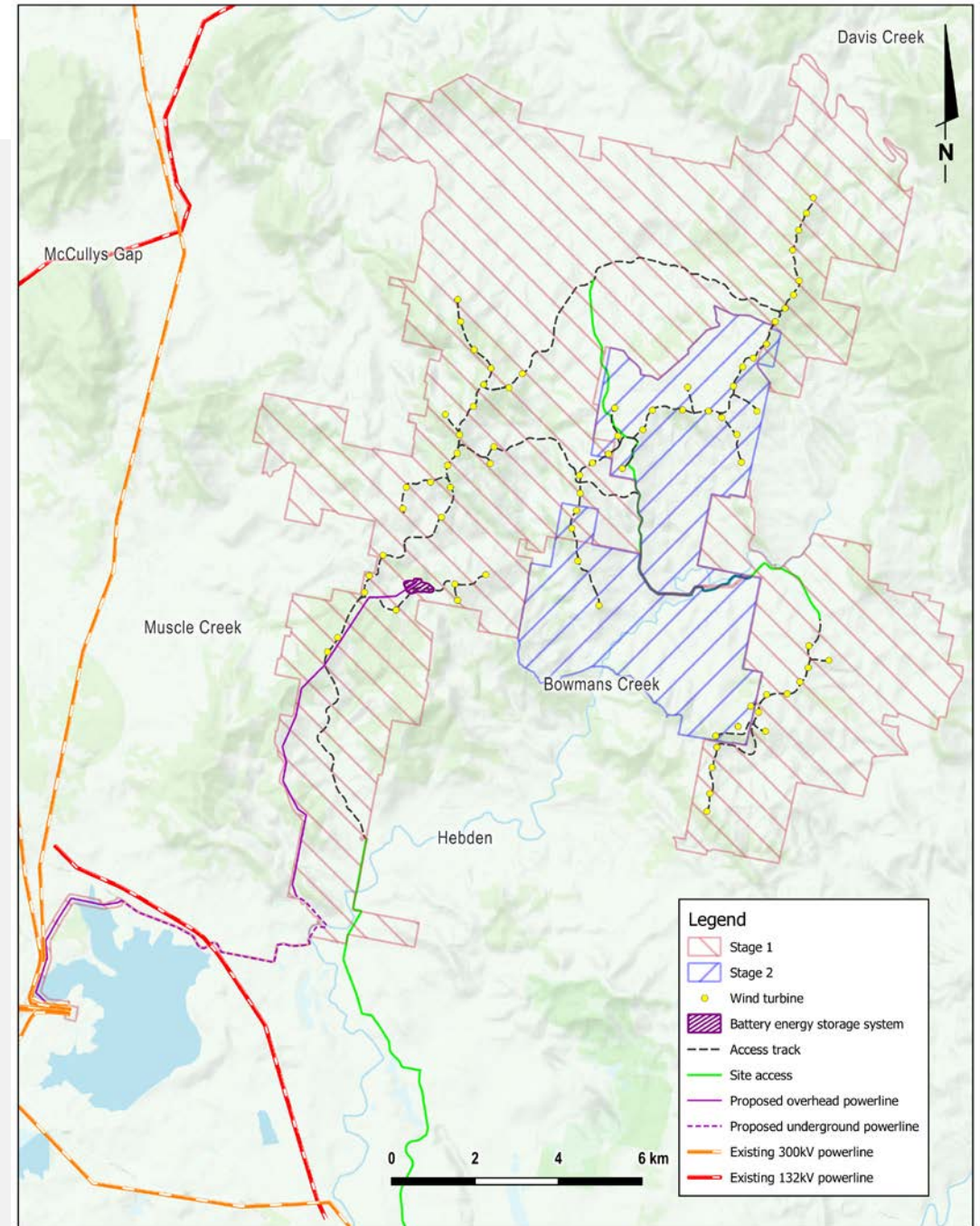
SSD-10315-Mod-1

Modification Report being prepared, to be assessed and determined.

Bowmans Creek Wind Farm Stage 2

SSD-73123714

DA and EIS being prepared, to be assessed and determined.



Next steps - estimated timings

BESS Modification Report

- Submission of Modification Report – Q3 2026
- Exhibition of Modification Report (if required) – Q3 2026
- NSW Department of Planning, Housing and Infrastructure (DPHI) collates public submissions (if required)
- Approval – aiming Q4 2026

Stage 2 Development Application

- Submission of EIS in June 2026, exhibition soon after (following adequacy review from NSW DPHI).
- Response to submissions and further information (if required) – Q3/Q4 2026
- Assessment and determination by DPHI (or IPC).
- Assessment report and recommendation to DCCEEW.
- Final determination by DCCEEW
- Approvals – target Q4 2026/Q1 2027



Contact & information

- Website - www.bowmanscreekwindfarm.com.au:

- Information materials.
- Past newsletters.
- General feedback form.
- Supplier expression of interest form.

- Direct contact details, anytime -
E: info@bowmanscreekwindfarm.com.au
Tel: 1800 731 296.

- Newsletters -

Email: register online at <http://arkenergy.com.au/mailling-list-details>

Post: provide mail (post) address to the project team.



Thank you

Bowmans Creek Wind Farm

T 1800 731 296

E info@bowmanscreekwindfarm.com.au

W bowmanscreekwindfarm.com.au

