

# Boomer Green Energy Hub



A photomontage showing what the wind farm might look like from Apis Creek Road, Mount Gardiner.

The Boomer Green Energy Hub is a renewable energy project proposed as a potential complementary land use for a number of pastoral properties about 30 km south-west of Marlborough in Central Queensland.

The proposal is in the early stages. Work to date has included monitoring of the wind resource, cultural heritage surveys with the Traditional Owners, the Barada Kabalbara Yetimarala People, technical studies for electrical and civil design, ecology and environmental surveys, grid connection studies and community consultation. As the work has been done, the proposed design has been refined and modified.

The project team is working towards lodging assessment documents in 2026.

The development application will be determined by the Queensland Government and requires various technical and specialist assessment reports including for ecology (flora and fauna), use of agricultural land, erosion risk, natural hazards, acoustic amenity, electromagnetic interference, shadow flicker, workforce accommodation, scenic amenity, transport networks, aviation safety and social impacts.

Several management plans will also be required, including for construction, fauna, vegetation, rehabilitation, water, sediment and erosion control, bushfire, traffic and decommissioning, as well as a community benefit agreement with involved councils.

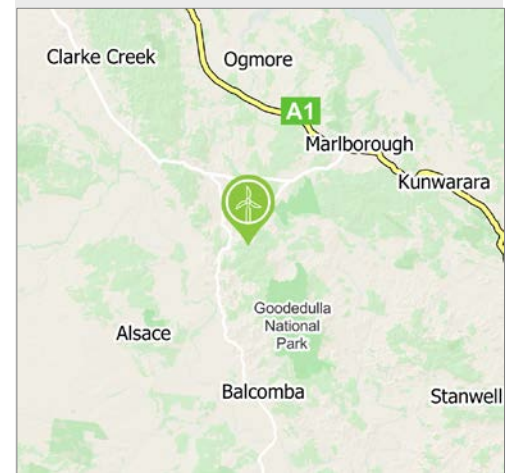
The proposal will also be subject to rigorous environmental assessment by the Australian Department of Climate Change, Energy, the Environment and Water (DCCEEW) and require DCCEEW's approval under the Commonwealth *Environment Protection and Biodiversity Conservation Act 1999*.

Subject to approvals and the construction period, the target for completion is 2031.

For more information please visit the project website at [www.boomerhub.com.au](http://www.boomerhub.com.au), sign up for newsletters, or come and say hello at the Boomer Green Energy Hub office and information centre in the Rockhampton CBD.



## Location



Proposed for a location about 30 km south-west of Marlborough:

- Potential to create up to 450 jobs during the construction period and 20 ongoing jobs for operation and maintenance.
- Potential to generate significant economic activity across the Livingstone Shire, Central Highlands Regional and Rockhampton Regional Council local government areas.
- Significant community benefit funding for the life of the project.
- Potential generation capacity of up to ~1,000 megawatts.



## What can the Boomer Green Energy Hub offer the community?

**COMMUNITY BENEFIT FUNDS** – The project would involve an agreement with host councils to deliver significant funding for the benefit of surrounding communities and contribute to the area's socio-economic development.

**JOBS** – Subject to final design, the project could generate up to 450 jobs during construction and about 20 ongoing jobs for maintenance and operation.

**ECONOMIC BOOST** – The project would generate significant economic activity through local and regional expenditure, value-add and household income. This would include work for local contractors and increased patronage for retail, service and hospitality businesses.

**OPPORTUNITIES FOR TRADITIONAL OWNERS** – Ark Energy works closely with First Nations stakeholders to ensure preservation of cultural heritage on project sites and where appropriate make agreements with Traditional Owner groups to deliver meaningful long-term benefits including financial, employment and training.

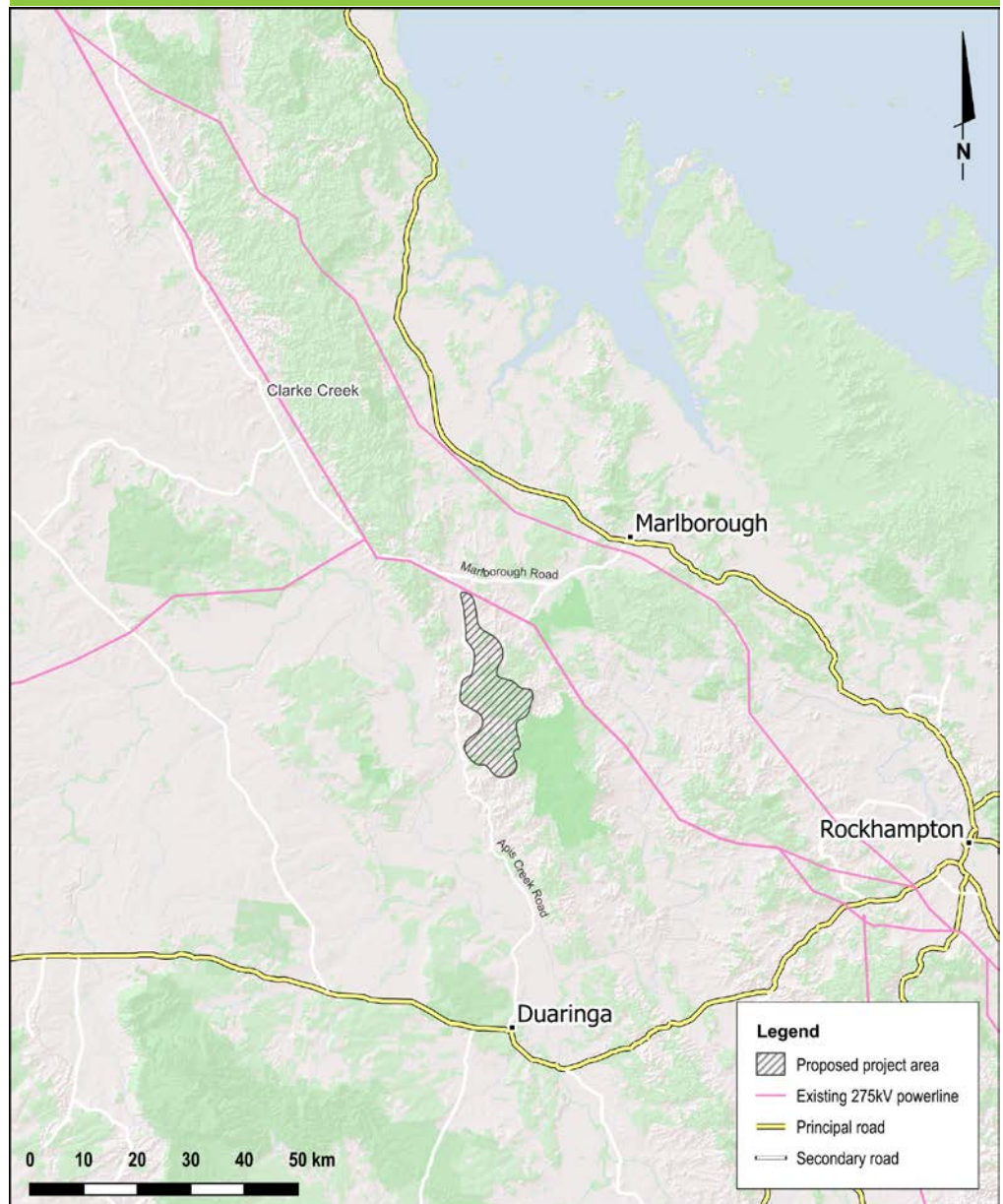
**RENEWABLE ENERGY** - Renewable energy is the cheapest source of electricity and more is needed to meet emissions reduction targets and growing electricity demand. Growth in renewable energy capacity will put downward pressure on electricity prices and deliver more affordable, cleaner and reliable electricity.

**NET GAINS FOR ECOLOGY** – A goal of the project will be to achieve a net gain for biodiversity and key species in the project area over the longer term. This might involve various initiatives including rehabilitation of disturbed areas not required for operation, environmental offset management areas, and improved land management regimes for fire, weed and pest control.

## Connect with us

Ark Energy appreciates the importance and value of involving community members and other local stakeholders. Questions and feedback are welcome at any time and can be sent directly to the project team. We also encourage you to stay up to date by registering for project newsletters. →

## Boomer Green Energy Hub project area



### Did you know?

Hosting renewable energy infrastructure is a productive land use that is complementary to livestock grazing. Livestock are unaffected by operating wind turbines and will often use the towers for shelter or shade.



## Boomer Green Energy Hub

**Visit** – Boomer Green Energy Hub Office & Information Centre, 1/24 William Street, Rockhampton CBD.


**Website** - [boomerhub.com.au](http://boomerhub.com.au) or scan QR code right

**Email** - [info@boomerhub.com.au](mailto:info@boomerhub.com.au)

**Telephone** - 1800 731 296

**News** - Project newsletters are available by email or post. To receive newsletters by email (e-news) register online at [arkenergy.com.au/mailling-list-details](http://arkenergy.com.au/mailling-list-details). To receive newsletters by post, send an email with your postal address and a request to be added to the direct mail (post) list.



 Scan QR code above to visit the project website