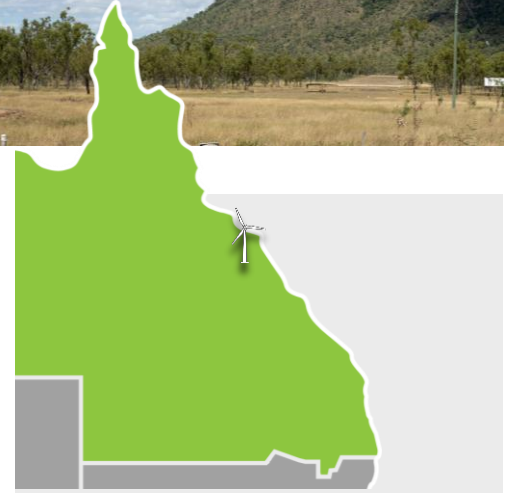


# Collinsville Green Energy Hub



Photograph of the project area

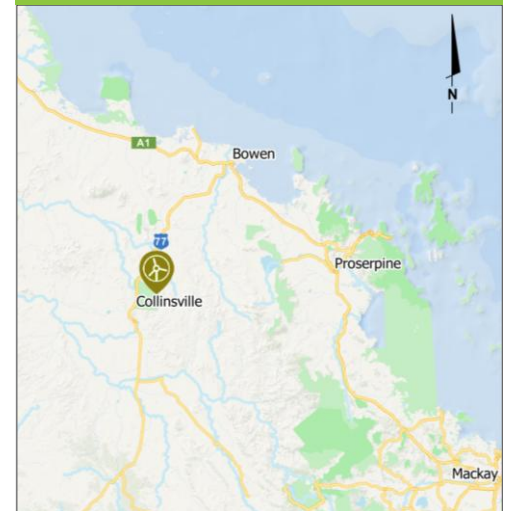


The Collinsville Green Energy Hub is a renewable energy project proposed as a potential complementary land use for a number of cattle grazing properties east of Collinsville and about 80 km south-west of Bowen, in the Whitsunday Regional Council local government area.

The proposal is in the early stages. Work to date has included monitoring of the wind resource, cultural heritage surveys with the Traditional Owners, technical studies for electrical and civil design, ecology and environmental surveys, grid connection studies, and community consultation. The proposed layout design is under consideration and yet to be finalised, with iterations taking into account information from site investigations, technical studies and consultation. Subject to the final proposal, the project could involve integrated generation and storage and have a potential generation capacity of up to 3,000 megawatts.

For more information please visit the project website at [www.collinsvillehub.com.au](http://www.collinsvillehub.com.au) and to be kept up to date register for newsletters, see details overleaf.

## Location



The project team has been active in the local community, supporting and participating in local shows and community events in Collinsville, Bowen, Proserpine and Airlie Beach, participating in the Mackay-Whitsunday-Isaac Healthy Rivers to Reef Partnership, hosting community consultation sessions and supporting the Collinsville Connect Telecentre.



Proposed for an area east of Collinsville and about 80 km south-west of Bowen.

- Potential to create 1,000 direct/indirect jobs including 350+ during construction and 15-30 for operation.
- Potential to generate significant local and regional expenditure.
- Economic benefits for the Whitsunday, Mackay, Burdekin and Isaac Regional Council areas.
- Significant community benefit funding for the life of the project.
- Potential generation capacity of up to ~3,000 megawatts.

## What can the Collinsville Green Energy Hub offer the local and regional communities?

**JOBS** – Subject to final design, the project could generate 1,000 direct and indirect jobs, including more than 350 direct jobs during construction and 15-30 ongoing jobs for maintenance and operations.

**ECONOMIC BOOST** – The project could generate significant economic activity across the Whitsunday, Mackay, Burdekin and Isaac Regional Council areas, through local and regional expenditure, value-add, and household income. This could include work for local contractors and increased patronage for accommodation, retail, service and hospitality businesses.

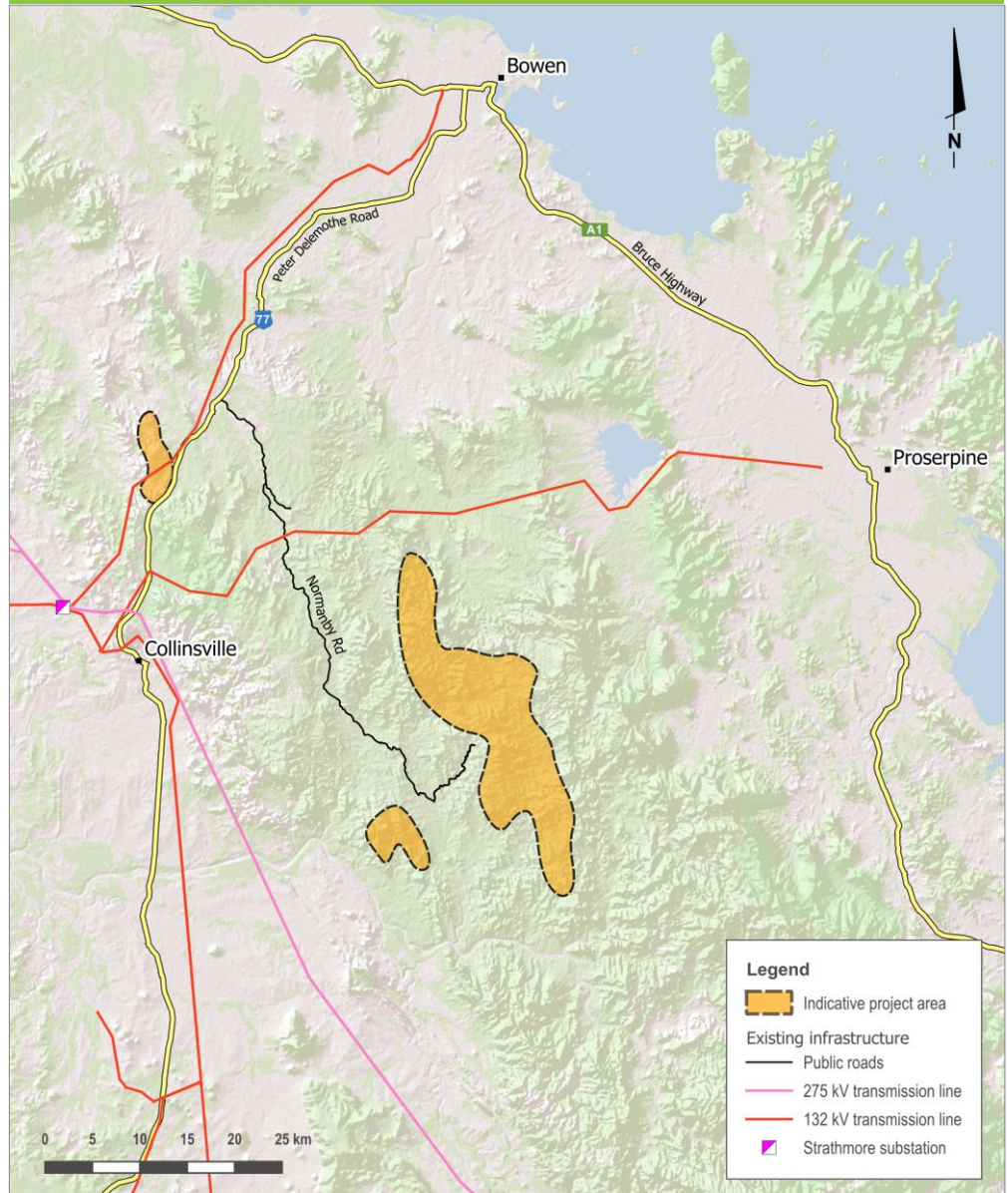
**OPPORTUNITIES FOR TRADITIONAL OWNERS** – Ark Energy works closely with First Nations stakeholders to ensure preservation of cultural heritage on project sites and where appropriate make agreements with Traditional Owner groups to deliver meaningful long-term benefits including financial, employment and training.

**COMMUNITY BENEFITS** – The project would involve an agreement with Whitsunday Regional Council to deliver significant funding for the benefit of surrounding communities and to support local initiatives, for the life of the project.

**RENEWABLE ENERGY** - Renewable energy is the cheapest source of electricity and more is needed to meet emissions reduction targets and growing electricity demand. Increases in renewable energy capacity will put downward pressure on electricity prices and deliver more affordable, cleaner and reliable electricity.

**NET GAINS FOR ECOLOGY** – A goal of the project will be to achieve a net gain for biodiversity and key species in the project area over the longer term. This includes avoiding and minimising potential environmental impacts and committing to initiatives such as rehabilitation of the initial construction disturbance, environmental offset management areas, and improved management regimes for fire, weed and feral pest control.

## Collinsville Green Energy Hub project area



*The proposed project area is near Collinsville and south-west of Bowen in the Whitsunday region of Queensland. It involves large pastoral properties and is close to existing transmission infrastructure.*

### Did you know?

Hosting renewable energy infrastructure is a productive land use that is complementary to livestock grazing. Livestock are unaffected by operating wind turbines and will often use the towers for shelter or shade.



### More information

**Website** - [collinsvillehub.com.au](http://collinsvillehub.com.au) or scan QR code right

**Email** - [info@collinsvillehub.com.au](mailto:info@collinsvillehub.com.au)

**Phone** - 1800 731 296

**News** - Project newsletters are available by email or post. To receive newsletters by email (e-news) register online at [arkenergy.com.au/mailling-list-details](http://arkenergy.com.au/mailling-list-details). To receive newsletters by post, send an email with your postal address and a request to be added to the direct mail (post) list.



Scan QR code to visit the project website