

Burrendong Wind Farm



Photomontage of what the wind farm would look like from Wallawaugh Rd, Hargraves, approximately 2 km away.

Further work

Over the past year further ecology surveys have been completed in the Burrendong Wind Farm project area, including seasonal bird and bat monitoring, and biodiversity surveys for endangered ecological communities and potential habitat for endangered species. Environmental assessments and a preliminary design have also been completed for on-site temporary construction workforce accommodation. The biodiversity assessment report has been updated to incorporate the new information. Technical assessments including for visual impact and noise have also been updated.

Updated Submissions Report and Amendment Report

The Submissions Report, responding to submissions received during the public exhibition of the Environmental Impact Statement in late 2023, and the Amendment Report, outlining changes to the proposal, have both been updated to reflect findings from the additional work that has been done and will be re-lodged with the NSW Department of Planning, Housing and Infrastructure (DPHI). After the reports have been accepted by the DPHI they will be uploaded to the project's page in the NSW Major Projects Portal at: planningportal.nsw.gov.au/major-projects/projects/burrendong-wind-farm.

Proposed road upgrades

The project team has been engaging with Mid-Western Regional Council and landowners to finalise arrangements for proposed public road upgrades.

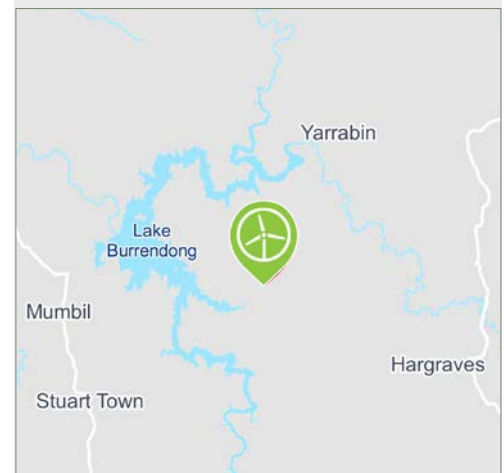
A Memorandum of Understanding has been signed with Mid-Western Regional Council for realignments and upgrades to Twelve Mile Road, Burrendong Dam Road and Yarrabin Road. Strategic designs have also been prepared for an upgrade of the intersection at Goolma onto Twelve Mile Road, part of the planned transport route from the Port of Newcastle.

Next steps

After the Submissions Report and Amendment Report have been accepted and published by DPHI, it is expected that DPHI will complete its assessment and refer the proposal to the NSW Independent Planning Commission for determination. The project has also been determined a controlled action under the *Environment Protection and Biodiversity Conservation Act 1999*, so will require final approval from the Australian Department of Climate Change, Energy the Environment and Water.

Thank you to everyone who has engaged with the project team to date. Input from community members is welcome and can be sent directly to the project team at any time via the contact details overleaf.

Location



The project area for the proposed Burrendong Wind Farm is east of Lake Burrendong, within Dubbo Regional Council and Mid-Western Regional Council areas, in the central west region of New South Wales.

The site has an excellent wind resource and is within the Central West-Orana Renewable Energy Zone, an area identified as optimal for new renewable energy projects due to the natural resources and proximity to existing or planned network infrastructure.

New renewable energy projects are required to help the NSW Government meet its targets to halve emissions by 2030 and achieve net zero by 2050.

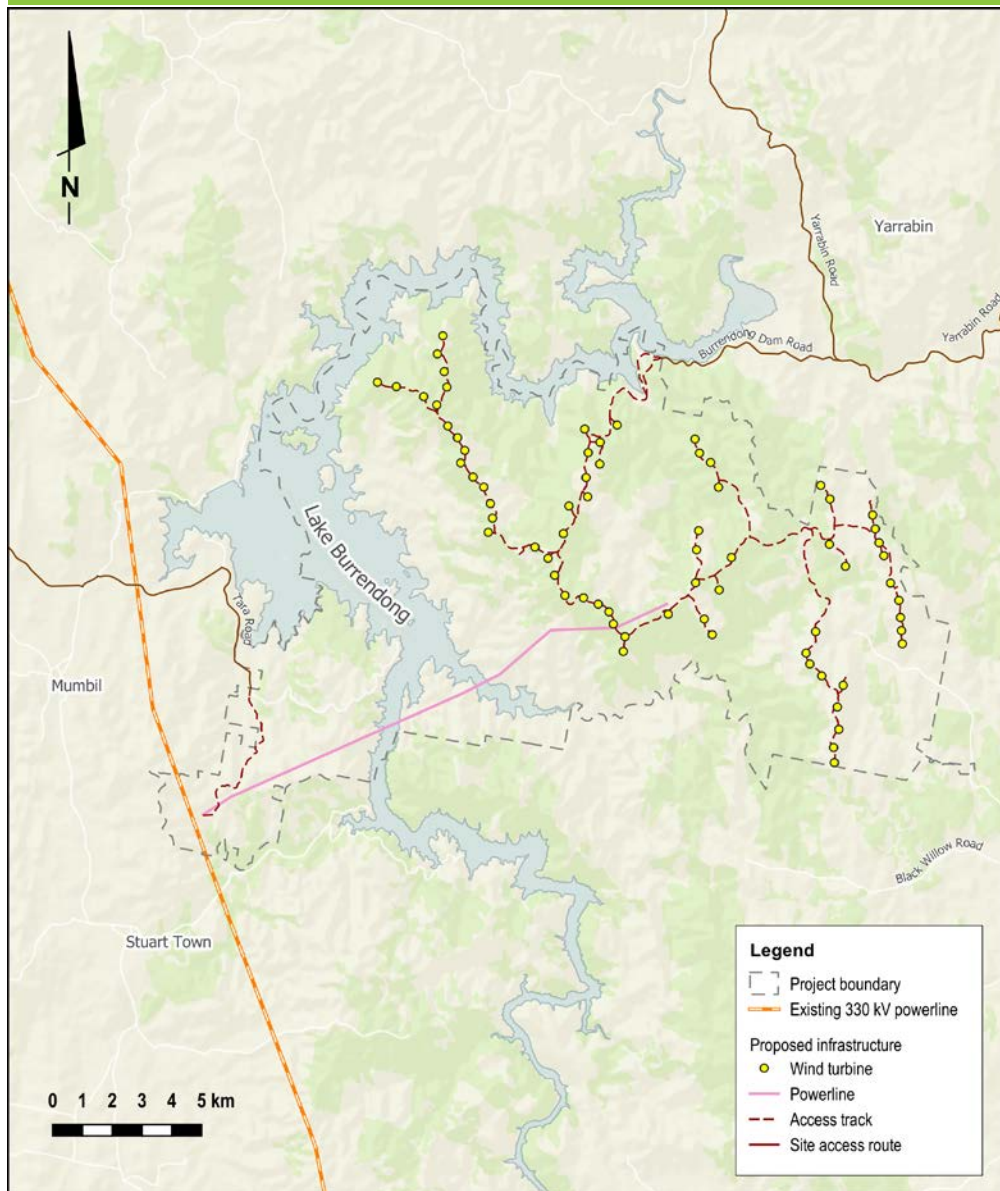
The proposal involves up to 70 wind turbines with a generation capacity of 400-500 megawatts.

Planning & assessment

Utility-scale wind farms in NSW are considered State Significant Development and assessed by the NSW Department of Planning, Housing and Infrastructure

- 1 Site selection and preliminary investigations ✓
- 2 Initial concept and consultation ✓
- 3 Referral to the Australian Department of Climate Change, Energy, the Environment and Water (DCCEEW) for review under the Commonwealth *Environment Protection and Biodiversity Conservation Act 1999* (EPBC Act). ✓
- 4 Scoping Report submitted to the NSW Department of Planning and Environment (DPE) ✓
- 5 Determination on EPBC Act referral by DCCEEW - controlled action with assessment under bilateral agreement (EPBC ref 2022/09268) ✓
- 6 Planning Secretary's Environmental Assessment Requirements (SEARs) for the Environmental Impact Statement (EIS) issued by DPE ✓
- 7 Studies, assessments, design ✓
- 8 Preparing EIS for lodgment ✓
- 9 Development application (DA) and EIS lodged with DPE ✓
- 10 DA and EIS placed on public exhibition and open for submissions ✓
- 11 Response to submissions and further information prepared for Department of Planning, Housing and Infrastructure (DPHI, formerly DPE) **WE ARE HERE**
- 12 Assessment and recommendation by DPHI, referral to NSW Independent Planning Commission (IPC)
- 13 Determination by IPC
- 14 Determination by DCCEEW

Burrendong Wind Farm proposed design, 70 wind turbines



Best Practice Charter report

Ark Energy is a signatory to the Clean Energy Council's (CEC) *Best Practice Charter for Renewable Energy Projects*, a voluntary set of commitments to engage respectfully with communities, be sensitive to environmental and cultural values and make a positive contribution to the regions in which we operate.

In November 2025 the CEC published the annual Charter signatory reports. The reports include hundreds of examples of how renewable energy projects are delivering meaningful benefits to regional communities around Australia.

Ark Energy's Best Practice Charter Report for 2025 is available under the 'News' section of the project website and by scanning the QR code right.



More information

Telephone - 1800 731 296

Email - info@burrendongwindfarm.com.au

Sign-up for e-newsletters - arkenergy.com.au/mailling-list-details

Website - burrendongwindfarm.com.au or scan QR code right.

