

# Richmond Valley Solar Farm



A render illustration of the Richmond Valley Solar & BESS

## Project approved

In October 2025 Ark Energy received planning approval from the NSW Department of Planning, Housing and Infrastructure for the Richmond Valley Solar Farm. The approval is for a solar farm with a generation capacity of up to 435 MWac and a long-duration Lithium-iron phosphate BESS with a power capacity of up to 475 MW.

In December 2025 the proposal was also approved by the Australian Department of Climate Change, Energy, the Environment and Water (DCCEEW) under the Commonwealth *Environment Protection and Biodiversity Conservation Act 1999*.

The project will deliver community benefit funding of \$850 per installed MW of solar generation, per annum for the life of the solar farm. Environmental commitments also include the establishment of a new 30-metre-wide biodiversity corridor along the northern boundary of the project area and planting of a variety of native species to improve connectivity between the Ellangowan and Bungawalbin State Forests.

Assessment documentation is available online from the NSW Government's Major Projects portal. Scan QR code right or visit <https://www.planningportal.nsw.gov.au/major-projects/projects>



DCCEEW's decision notice is available online from the EPBC Act Public Portal (EPBC Number\_2023/09641). Scan QR code left or visit <https://epbcpportal.environment.gov.au/all-referrals/>

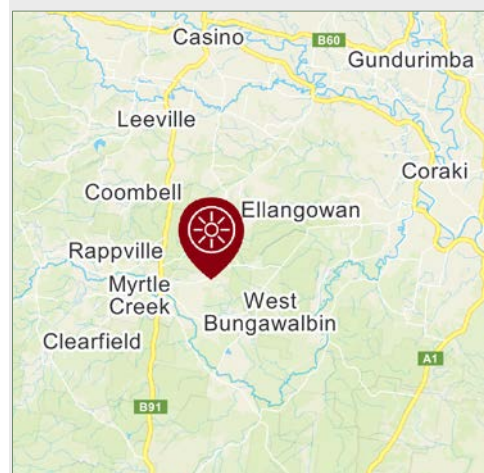
## Next steps

In September 2025 Ark Energy signed an early works agreement for the project with Elecnor Australia, which includes detailed engineering design for the solar farm, balance of plant design for the BESS, structural certification, management plans and permitting support. This work is expected to be completed by Q2 2026, ahead of execution of the full engineering, procurement and construction (EPC) contract.

Interested local suppliers and contractors are invited to submit their credentials through the 'Suppliers' form on the project website, and these details will be passed on to the EPC contractor.

The project is due to be built in stages, with construction of the first stage consisting of a 200 MW AC solar farm and 275 MW / 2,200 MWh BESS to commence in 2026.

## Location



The Richmond Valley Solar & BESS project area is near Myrtle Creek, approximately 7 km east of Rappville and 25 km south of Casino, in the Northern Rivers region of New South Wales.

The land was previously used for private forestry, is relatively flat, has an excellent solar resource and is close to the transmission network, with the Coffs Harbour to Lismore 330 kV powerline intersecting the north-west corner of the site.

The project is approved for a solar farm with a generation capacity of up to 435 MWac and a BESS with a power capacity of 475 MW.

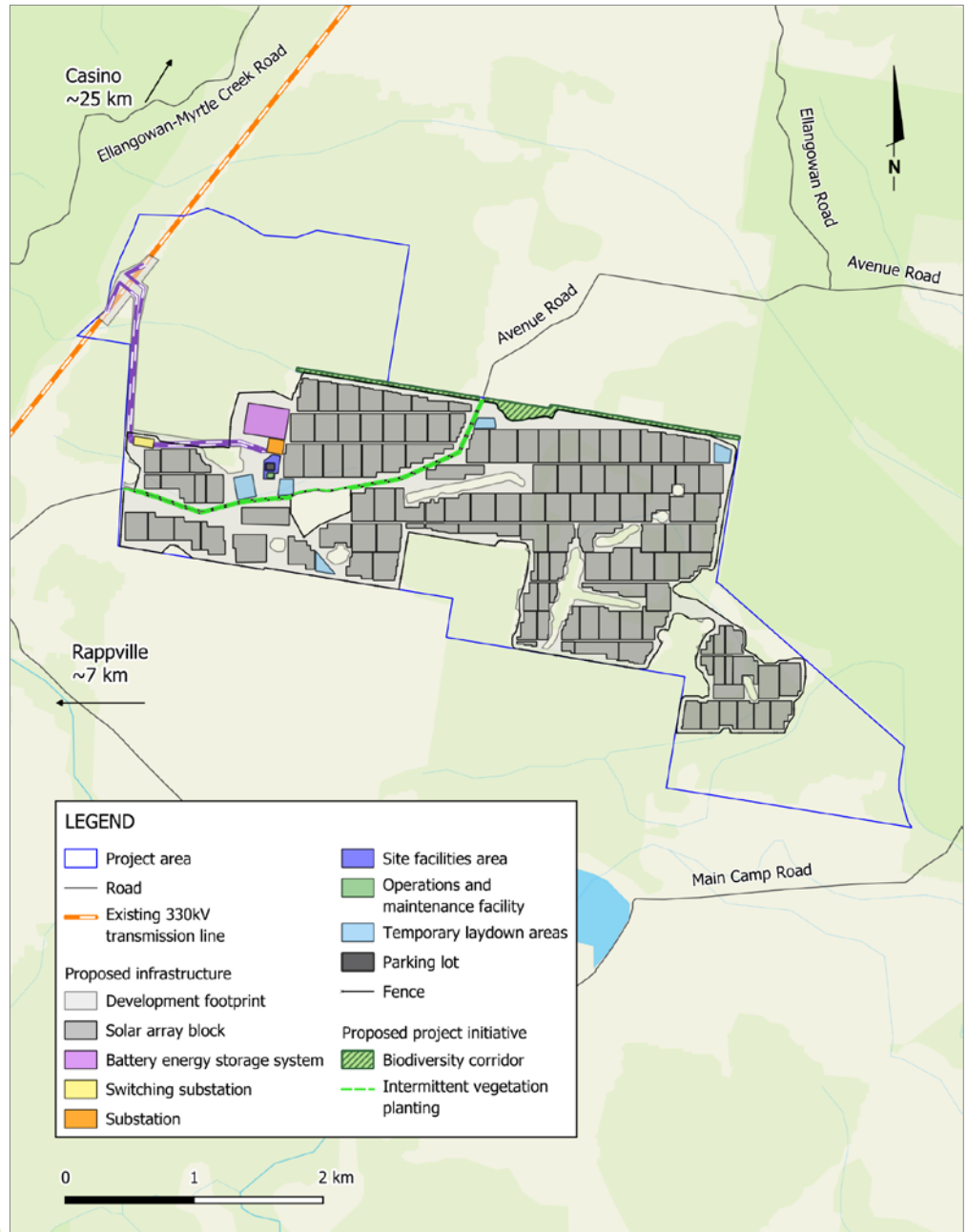
It is anticipated that the project will be operational by 2028.

## Planning & assessment

Utility-scale solar farms in NSW are considered State Significant Development and assessed by the NSW Department of Planning, Housing and Infrastructure (DPHI).

- 1 Site selection and preliminary investigations ✓
- 2 Initial concept and consultation ✓
- 3 Scoping Report submitted to the former NSW Department of Planning and Environment (DPE) ✓
- 4 Planning Secretary's Environmental Assessment Requirements (SEARs) for the Environmental Impact Statement (EIS) issued by DPE ✓
- 5 Referral to the Australian Department of Climate Change, Energy, the Environment and Water (DCCEEW) for review under the Commonwealth *Environment Protection and Biodiversity Conservation Act 1999* (EPBC Act). ✓
- 6 Determination by DCCEEW – controlled action (Ref 2023/09641) ✓
- 7 Studies, assessments, design ✓
- 8 Finalising EIS for lodgment ✓
- 9 Development application (DA) and EIS lodged with DPHI (formerly DPE) ✓
- 10 DA and EIS on public exhibition for comment ✓
- 11 Responses to submissions and additional information ✓
- 12 Assessment by DPHI ✓
- 13 DPHI assessment report and decision ✓
- 14 Final determination by DCCEEW ✓

## Richmond Valley Solar Farm site layout



The map above shows the location and approved design for the Richmond Valley Solar Farm & BESS including solar panel arrays, the battery energy storage system, laydown areas, the powerline connection corridor and a new biodiversity corridor.

## Thank you

Thank you to everyone who engaged with the project team this year. Questions and feedback are welcome at any time and can be sent directly to the project team via the contact details below or the 'Feedback' form on the project website.

We wish everyone a safe and enjoyable festive season and look forward to updating you again in 2026.

## More information

**Telephone** - 1800 731 296

**Email** - [info@richmondvalleysolar.com.au](mailto:info@richmondvalleysolar.com.au)

**Register for e-newsletters** - [arkenergy.com.au/mailling-list-details](http://arkenergy.com.au/mailling-list-details)

**Website** - [richmondvalleysolar.com.au](http://richmondvalleysolar.com.au) or scan the QR code right

