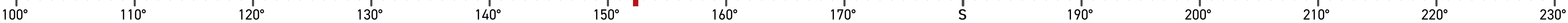
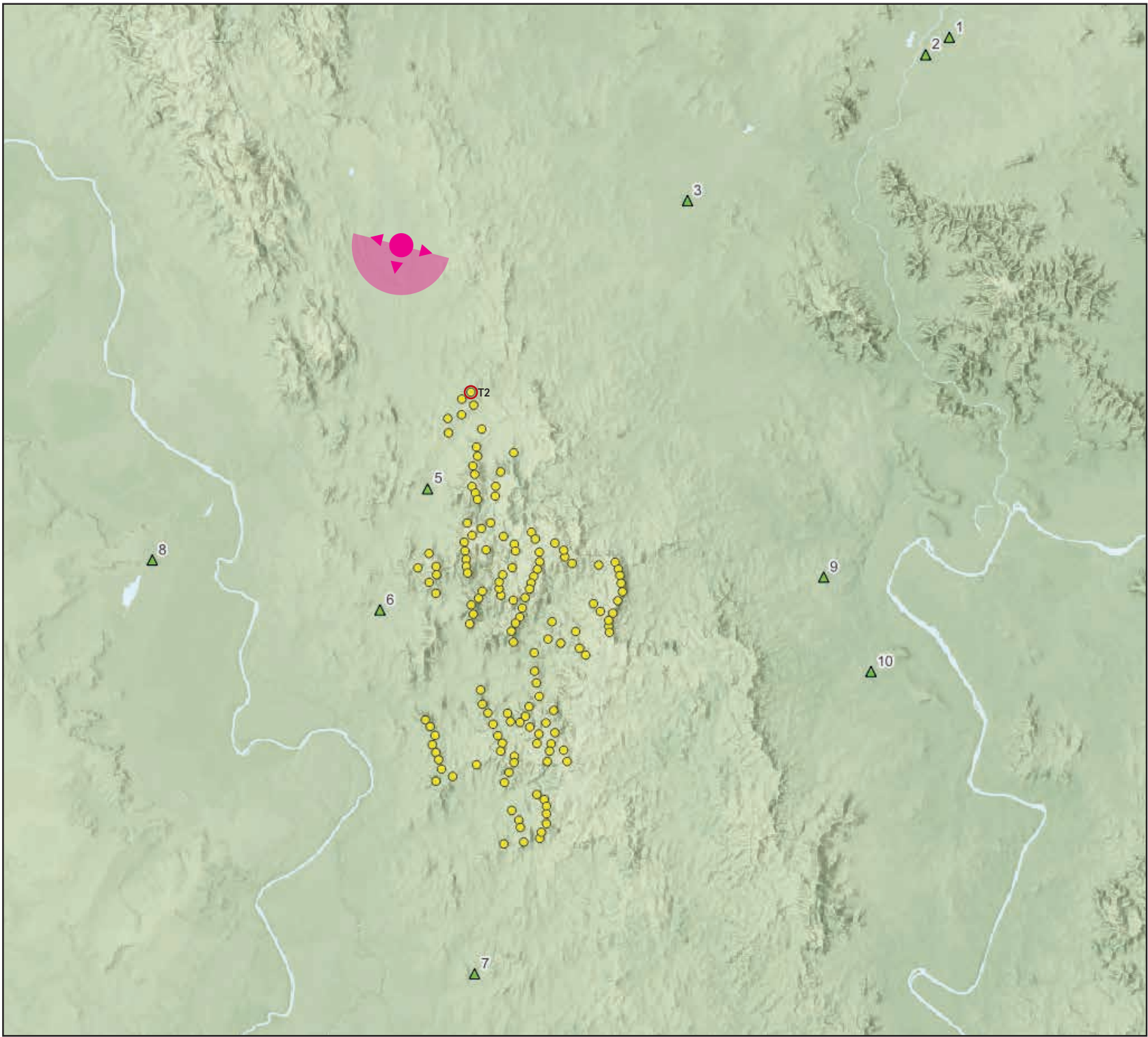


Boomer Green Energy Hub - 138 Wind Turbine Layout

130° Photomontage view facing South from Apis Creek Rd - Viewpoint 4 (Wind Turbine Dimensions: 164m hub height, 175m rotor diameter - 251.5m tip height)



Aerial: viewpoint location and photograph direction shown by the pink marker.



Site Map: viewpoint location and direction shown by the pink marker.

Viewpoint information

Horizontal field of view: 130°

Bearing to closest turbine: 152.1° (T2 - red marker)

Elevation: 140.5m

Photo Taken: 2:54 PM on 12th of Dec 2022

Camera: Canon EOS 6D Mark II, 50mm Prime Lens

Photo Coordinates: E: 764,575 N: 7,461,980

Projection: WGS 84/UTM Zone 55s (EPSG: 32755)

Original Format: A1 Landscape

Turbine dimensions: 164m hub height, 175m rotor diameter = 251.5m tip height

* Photomontage and wireframe provide a 'representation' of the projects visibility for the purpose of discussion. The layout as shown may be subject to change in accordance with the planning process. The images provide a reasonable impression of wind turbine scale and distance to wind turbines; however, cannot be 100% accurate. A static image cannot convey wind turbine blade movement, different lighting, weather and seasonal conditions that vary through time.