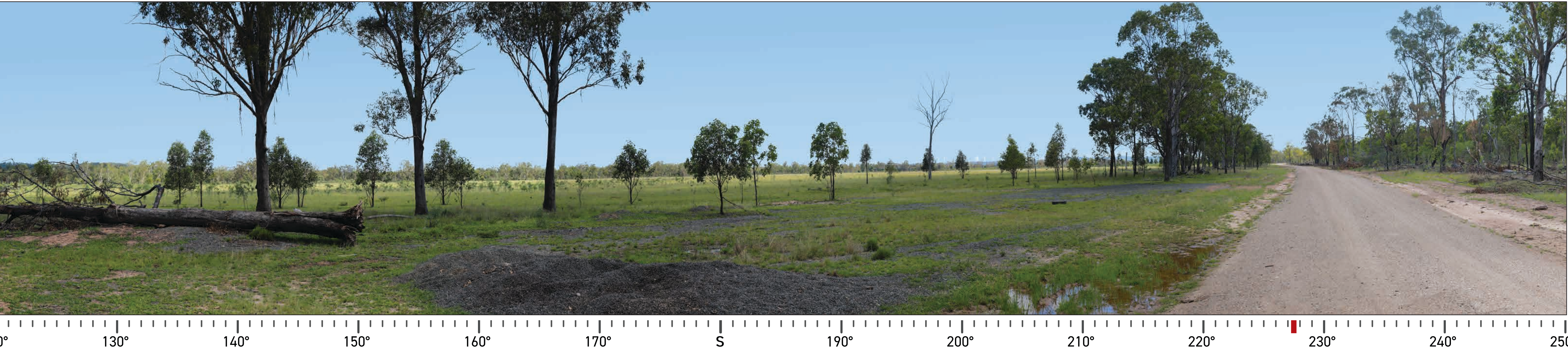
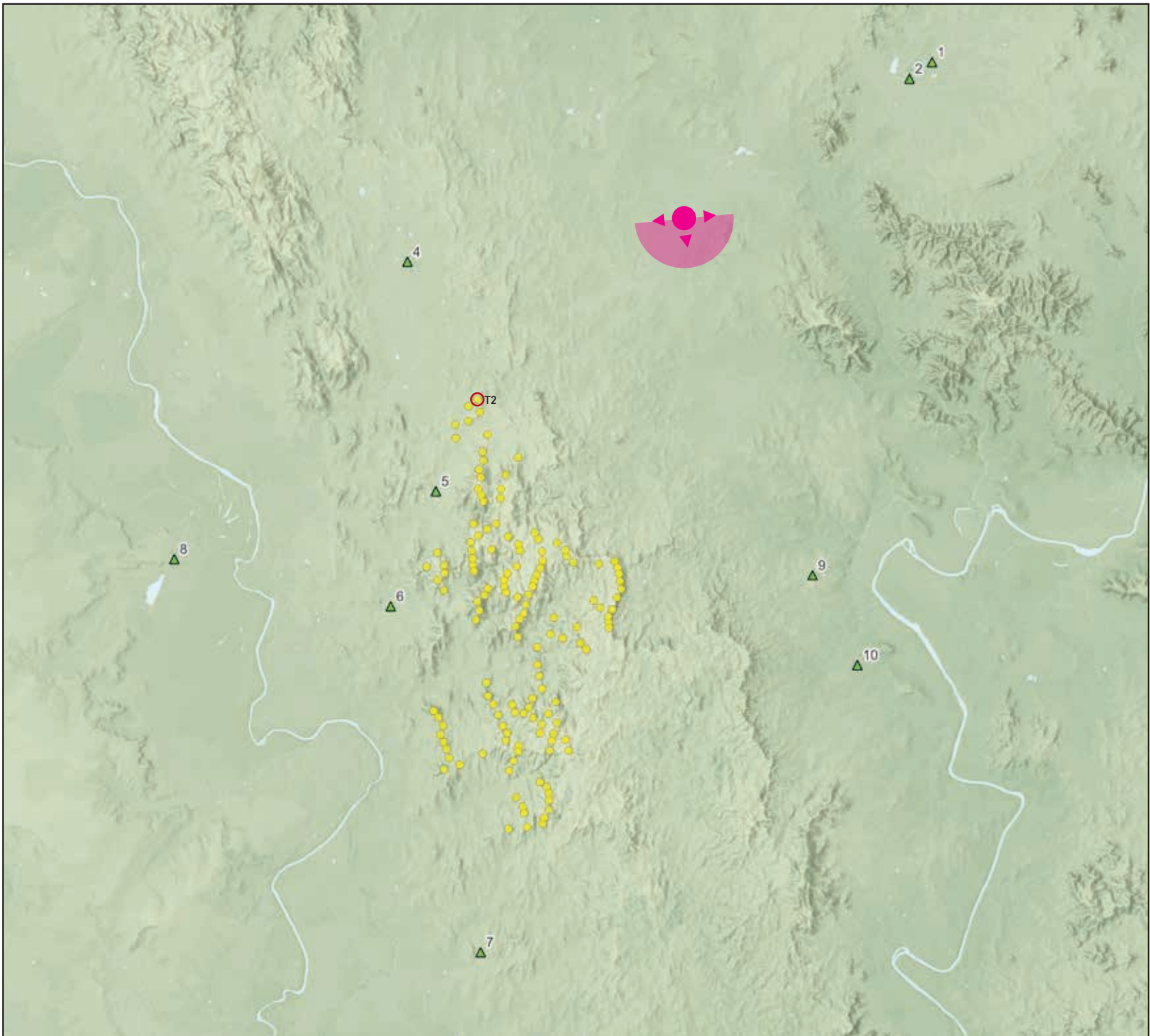


# Boomer Green Energy Hub - 138 Wind Turbine Layout

130° Photomontage view facing South from Clifton Rd near Marlborough Rd - Viewpoint 3 (Wind Turbine Dimensions: 164m hub height, 175m rotor diameter - 251.5m tip height)



Aerial: viewpoint location and photograph direction shown by the pink marker.



Site Map: viewpoint location and direction shown by the pink marker.

Viewpoint information

**Horizontal field of view:** 130°

**Bearing to closest turbine:** 227.4° (T2 - red marker)

**Elevation:** 85.5m

**Photo Taken:** 2:40 PM on 12th of Dec 2022

**Camera:** Canon EOS 6D Mark II, 50mm Prime Lens

**Photo Coordinates:** E: 781,732 N: 7,464,746

**Projection:** WGS 84/UTM Zone 55s (EPSG: 32755)

**Original Format:** A1 Landscape

**Turbine dimensions:** 164m hub height, 175m rotor diameter = 251.5m tip height

\* Photomontage and wireframe provide a 'representation' of the projects visibility for the purpose of discussion. The layout as shown may be subject to change in accordance with the planning process. The images provide a reasonable impression of wind turbine scale and distance to wind turbines; however, cannot be 100% accurate. A static image cannot convey wind turbine blade movement, different lighting, weather and seasonal conditions that vary through time.