

# Involving the Community

## Ark Energy's approach

Ark Energy appreciates the importance of listening to and involving community members and other local stakeholders throughout the project's development and ensuring that local priorities and concerns are considered.

Ark Energy's approach to consultation is guided by the International Association for Public Participation's (IAP2) Core Values, Code of Ethics and Public Participation Spectrum, widely accepted as the industry benchmark. It is an approach that is open, inclusive, responsive, accessible and transparent. The company is also a signatory to the Clean Energy Council's *Best Practice Charter for Renewable Energy Projects*, a voluntary commitment to engage respectfully with communities, be sensitive to environmental and cultural values, and make a positive contribution to the regions in which we operate.

We are focused on providing opportunities for interested community members and stakeholders to participate in the development process, and maximising opportunities for the community to benefit from the project in meaningful ways. We value input from local community members and community consultation is ongoing. There are many ways to stay informed, provide feedback and participate in the process, and where possible the community's input is incorporated into project plans to improve outcomes and lasting benefits.

## Ways to stay informed & participate

### Website with 'Feedback' and 'Supplier' forms

The project website – [boomerhub.com.au](http://boomerhub.com.au) – provides up to date project information, maps and previously issued newsletters. It also includes a general 'Feedback' form and a 'Supplier' form for businesses to register interest in being considered for the project.

### Project newsletters

Project newsletters are available by post and email. To receive newsletters by email register online at [arkenergy.com.au/mailling-list-details](http://arkenergy.com.au/mailling-list-details). To receive newsletters by mail, please send your postal address and a request to be added to the mailout list to [info@boomerhub.com.au](mailto:info@boomerhub.com.au). We respect your privacy, and your details will only be used for this purpose. All previously issued newsletters are also available under the 'News' tab on the project website, [boomerhub.com.au](http://boomerhub.com.au).

### Rockhampton information centre

The Boomer Green Energy Hub has an information centre in Rockhampton. It provides the latest information on the project and an opportunity to discuss the proposal with a member of the project team.

### Community consultation group

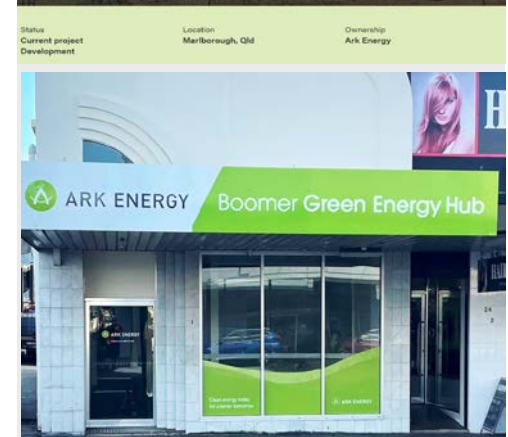
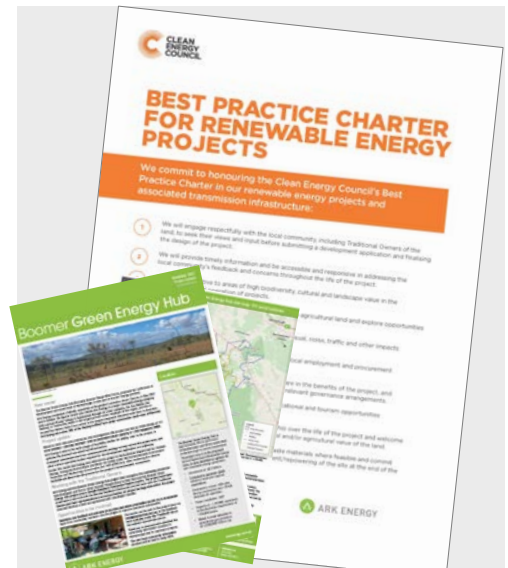
A community consultation group comprising of local community members and stakeholder representatives will be established. If you live locally and are interested in being a member of the Boomer Green Energy Hub community consultation group, please email [info@boomerhub.com.au](mailto:info@boomerhub.com.au) and let us know.

### Community information sessions

Local information sessions are held during the planning process. Details are advertised in the information centre and project newsletters.

### Public exhibition of assessment documents

Once lodged, the development application and assessment documents will be placed on public exhibition for comments. Exhibition periods will be advertised in the information centre, project newsletters and through local media.



## Tell us what's important for the Boomer Green Energy Hub's community benefit program

The Boomer Green Energy Hub will involve a community benefit program with funding for the life of the project. The program will be designed in consultation with the local community, and is intended to:

- **Share** benefits with the broader local community.
- Make a **meaningful contribution** to issues the community cares about.
- Be **flexible** to focus on changing priorities over time.
- Ensure the project is a **positive, rewarding** and **beneficial** development for the local community.

Community members and other local stakeholders are invited to help inform the design of the program by sharing their views on what is important for the local community.

This can be done by emailing the project team directly using the contact details below.

## Questions and feedback welcome at any time

Questions and feedback are welcome at any time.

Please send your comments directly to the project team via the contact details right.

We appreciate all input and will do our best to respond to enquiries as quickly as possible.

## Ark Energy's engagement goals & commitments

Ark Energy's goals for community engagement include to:

- Ensure community members are well informed and kept up to date on project status and developments.
- Obtain feedback and provide ample opportunities for community members to communicate their views, concerns and aspirations for the project.
- Address any community member's issues or concerns promptly.
- Work to avoid and minimise the impacts and maximise the benefits of the project for the local community.
- Wherever possible utilise input from community members to optimise the design of the project.

Ark Energy commits to:

- Be proactive – connect early in the process and regularly share information so community members know what is happening and how to interact with the project team and provide feedback on the project.
- Be transparent – be honest and ethical in our dealings with all.
- Seek solutions – engage to understand, explore and collaborate on ways to avoid and minimise impacts and maximise the benefits of the project.
- Be flexible and inclusive – ensure that our engagement provides opportunities for all interested community members to have access to information and members of the project team.

## Invitation

### Boomer Green Energy Hub Social Impact Assessment Survey

Environmental consultancy Attexo is undertaking a Social Impact Assessment for the Boomer Green Energy Hub. Community members are invited to contribute to this assessment and provide valuable input for the project's community benefit program by completing the Social Impact Assessment Survey.

To access the online version of the survey please scan the QR code above on your mobile device or visit the web page: [www.surveymonkey.com/r/BoomerSIA](https://www.surveymonkey.com/r/BoomerSIA). Alternatively, if you prefer to complete a printed copy of the survey, please email [boomerhub\\_sia@attexo.com.au](mailto:boomerhub_sia@attexo.com.au) to request a printed survey and reply-paid envelope be mailed to your postal address.

For each completed survey Attexo receives, Ark Energy will donate \$50 to the local community service or organisation of the respondent's choice.

Survey responses are due back by Friday, 19 September 2025.



### Boomer Green Energy Hub

**Visit** – Boomer Green Energy Hub Office & Information Centre, 1/24 William Street, Rockhampton CBD.

**Telephone** - 1800 731 296

**Email** - [info@boomerhub.com.au](mailto:info@boomerhub.com.au)

**Website** - [boomerhub.com.au](https://boomerhub.com.au) or scan QR code right

**Newsletters** – register at [arkenergy.com.au/mailling-list-details](https://arkenergy.com.au/mailling-list-details) for e-news or send the project team your mail address and a request to be added to the direct mail (post) list.

