

Boomer Green Energy Hub



A photomontage showing what the wind farm might look like from Apis Creek Road, Mount Gardiner.

Proposed site layout

After multiple years of technical studies, on-site surveys and stakeholder consultation the proposed site layout has undergone several design iterations. Over the past months the project team has focused on identifying optimal locations for proposed infrastructure and the overall project design. A proposed site layout will be shared at upcoming local consultation sessions – see details for times and locations below.

Local consultation sessions, 13-15 August 2025

Residents and community members are invited to join the project team at local community consultation sessions for an update on work done to date and next steps. Three sessions will be held. Information shared at each session will be the same and for those unable to attend materials will be uploaded to the project website afterwards.

Duaringa - 4-6pm, Wednesday 13 August, Duaringa Golf Club, Capricorn Highway.

Marlborough - 4-6pm, Thursday 14 August, Marlborough Community Hall, Milman St.

Rockhampton - 12-2pm, Friday 15 August, Boomer Green Energy Hub Information Centre, 1/24 William St.

Refreshments will be provided. To assist with catering please RSVP noting selected session and number of attendees to info@boomerhub.com.au by Friday, 8 August.

Everyone is welcome. We look forward to meeting attendees and the opportunity to discuss the project and answer questions.

Social Impact Assessment survey

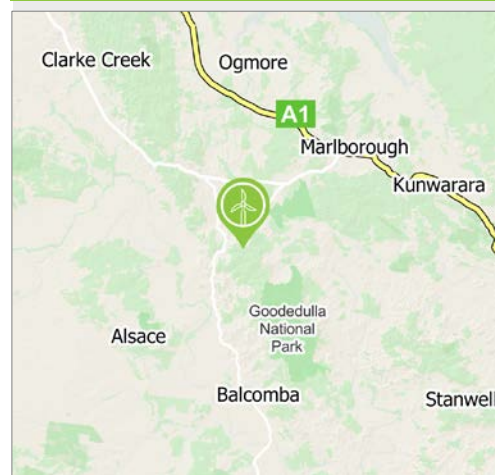
Environmental consultancy Attexo is undertaking a Social Impact Assessment (SIA) for the project and invites community members to complete a SIA survey. The survey is available online at www.surveymonkey.com/r/BoomerSIA or via the QR code below. Alternatively, a printed survey and reply paid envelope can be requested by emailing boomerhub_sia@attexo.com.au.

Ark Energy encourages all interested community members to complete the survey and provide valuable input to help inform the project's community benefit program. For each completed survey Attexo receives, Ark Energy will donate \$50 to the local community service or organisation of the respondent's choice. Survey responses are due by 5pm, Friday, 19 September 2025.



SIA Survey

Location



The project area for the Boomer Green Energy Hub is about 100 km north-west of Rockhampton and 30 km south-west of Marlborough in central Queensland.

- Capital investment of ~\$3 billion.
- Estimated to generate >\$500 million in local and regional expenditure.
- Estimated to create 350+ jobs during construction and ~20 ongoing jobs for operation.
- Economic benefits for the CQ region, especially the Central Highlands Regional, Rockhampton Regional and Livingstone Shire Council areas.
- Capacity of up to 1,000 megawatts.
- Community benefit program from the start of construction and for the life of the wind farm.
- Construction start target – late 2027
- Target for completion – early 2031

Planning & assessment

Queensland Government

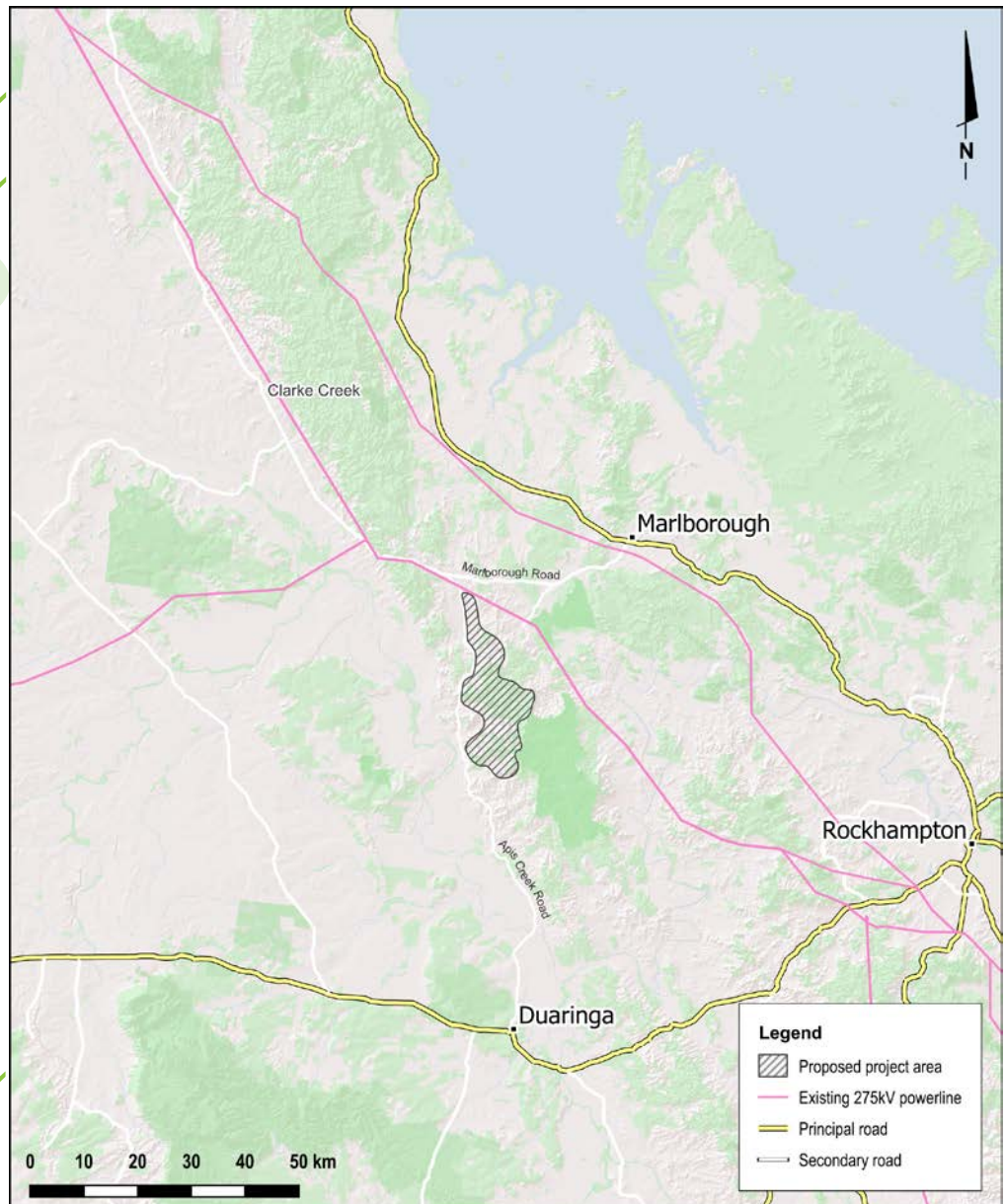
- 1 Site selection, initial concept, preliminary investigations ✓
- 2 Pre-lodgment meetings ✓
- 3 Studies and technical assessments to fulfil requirements (State code 23) **WE ARE HERE**
- 4 Development application and assessments lodged
- 5 Requests for further information (if required) and response
- 6 Documents accepted and placed on public exhibition
- 7 Response to submissions, further information (if required)
- 8 Final documents submitted
- 9 Assessment
- 10 Decision notice issued

+

Australian Government

- 1 Referral to the Department of Climate Change, Energy, the Environment and Water (DCCEEW) for review under the *Environment Protection and Biodiversity Conservation Act 1999* (EPBC Act) ✓
- 2 Decision and advice on assessment pathway: *Determined a controlled action with assessment by Environmental Impact Statement (EIS). EBPC no 2022/09396.* ✓
- 3 Assessment work for the EIS **WE ARE HERE**
- 4 Draft EIS submitted for adequacy review
- 5 Requests for further information (if required) and response
- 6 EIS accepted and placed on public exhibition
- 7 Response to submissions, further information (if required)
- 8 Final EIS submitted
- 9 Determination

Boomer Green Energy Hub project area



The project area involves several properties north-west of Rockhampton and south-west of Marlborough. The land is currently used for livestock grazing, which is a complementary land use.

Questions welcome

Questions about the Boomer Green Energy Hub proposal are welcome at any time and can be sent directly to the project team via the contact details below.

Business owners who are interested in providing services to the project are also invited to register their interest through the 'Suppliers' form on the project website.

Input from local stakeholders is valued and where practicable will be considered for the project's design to improve outcomes and community benefits.

More information

Visit – Boomer Green Energy Hub Office & Information Centre,
1/24 William Street, Rockhampton CBD.

Telephone - 1800 731 296

Email - info@boomerhub.com.au

Newsletters – register at arkenergy.com.au/mailling-list-details

Website - boomerhub.com.au or scan QR code right



Scan QR code to visit the project website