

Bowmans Creek Wind Farm



A photomontage showing what the wind farm would look like from Bowmans Creek Road, looking west from about 1 km away from the nearest wind turbine.

Proposed battery storage for Stage 1

Ark Energy is seeking consent to add a battery energy storage system (BESS) to Stage 1 as a modification to the DA. A BESS allows for efficient storage of excess energy generated during peak production for later use during low production periods or high demand, improving reliability and reducing energy costs.

The BESS would have a power capacity of up to 250 megawatts (MW) and energy storage capacity of up to 2,000 MWh over eight hours.

Details for the application are available online from the NSW Major Projects Portal at: <https://www.planningportal.nsw.gov.au/major-projects/projects/mod-1-battery-energy-storage-system-1>

EIS work underway for Stage 2

Bowmans Creek Wind Farm Stage 2 is a proposal for a further 21 wind turbines to be installed on land in the centre of the project area. Stage 2 would take advantage of the infrastructure planned for Stage 1 and add ~120 MW of capacity to the project.

Development consent for Stage 2 is being sought via a separate development application (DA). Environmental and technical studies for the environmental impact statement (EIS) are underway, including for biodiversity, noise, heritage, visual impact, economic impact, traffic and transport. Ark Energy anticipates lodging the DA and EIS for Stage 2 in 2026.

Local consultation sessions, 12 & 13 August 2025

Residents and community members are invited to join the project team for an update at local community consultation sessions in Hebden and Mt Olive.

Two sessions will be held. Information shared at each session will be the same and for those unable to attend will be uploaded to the project website afterwards.

Hebden 4-6pm, Tuesday 12 August 2025
Hebden Community Hall, 5 Scrumlo Rd.

Mt Olive 4-6pm, Wednesday 13 August 2025
Mt Olive Community Centre, 135 Carrowbrook Rd.

Refreshments will be provided. To assist with catering please RSVP with selected session and number of attendees to info@bowmanscreekwindfarm.com.au by Friday, 8 August. Everyone is welcome. We look forward to meeting attendees and the opportunity to discuss the project and answer questions.

Location



The Bowmans Creek Wind Farm project area is about 10 km east of Muswellbrook and located within the Hunter-Central Coast Renewable Energy Zone. Stage 1 is approved, and expected to deliver:

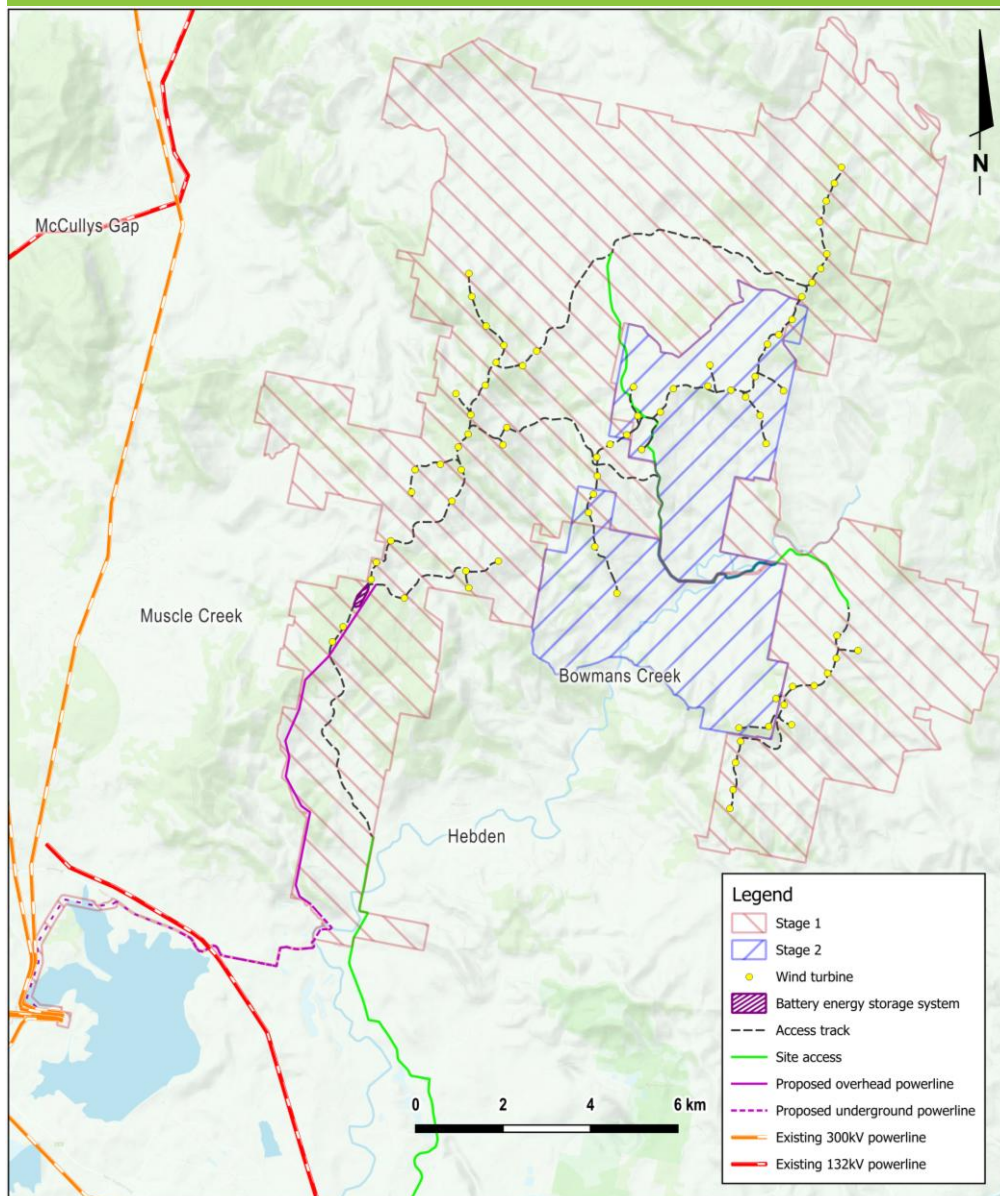
- 54 wind turbines with a generation capacity of 335 megawatts.
- More than 200 direct and indirect jobs in the regional area during construction, and 30 direct and indirect jobs during operation.
- \$179 million in the regional economy through direct and indirect expenditure, value-add and household income.
- Neighbour benefit program and significant community benefit funds from start of generation and for the life of the wind farm.

Planning & assessment Stage 2

Utility-scale wind farms in NSW are considered State Significant Development and assessed by the NSW Government.

- 1 Site selection and preliminary investigations ✓
- 2 Initial concept and consultation ✓
- 3 Referral to the Australian Department of Climate Change, Energy, the Environment and Water (DCCEEW) for review under the Commonwealth *Environment Protection and Biodiversity Conservation Act 1999* (EPBC Act). ✓
- 4 Scoping Report submitted to the NSW Department of Planning, Housing and Infrastructure (DPHI) ✓
- 5 Determination on EPBC Act referral by DCCEEW ✓
- 6 Secretary's Environmental Assessment Requirements (SEARs) for the Environmental Impact Statement (EIS) issued by DPHI ✓
- 7 Studies, assessments **WE ARE HERE**
- 8 Finalising EIS for lodgment
- 9 Development application (DA) and EIS lodged with DPHI
- 10 DA and EIS on public exhibition and open for submissions
- 11 Response to submissions and requests for further information (if required)
- 12 Assessment by DPHI
- 13 DPHI assessment report and recommendation
- 14 Final determination by DCCEEW

Bowmans Creek Wind Farm proposed layout



The Bowmans Creek Wind Farm project area is about 10 km east of Muswellbrook and located within the Hunter-Central Coast Renewable Energy Zone in the Hunter region of NSW.

Feedback welcome

Ark Energy appreciates the importance of involving local stakeholders, and input from interested community members is welcome and valued.

Feedback and questions can be sent directly to the project team at any time via the online feedback form on the website or the contact details below.

Where practicable input from local stakeholders will be factored into the project's design to improve outcomes and community benefits.

Companies interested in providing services to the project are also invited to register their interest through the website's 'Suppliers' form.

More information

Tel - 1800 731 296

Email - info@bowmanscreekwindfarm.com.au

Register for newsletters - arkenergy.com.au/mailling-list-details

Website - bowmanscreekwindfarm.com.au or scan QR code right



Scan QR code
to visit the website