



# **Collinsville Green Energy Hub**

Community update, Saturday 24 May 2025

# Acknowledgement of Country

We acknowledge the Traditional Custodians of the land upon which we meet and their continuing connection to lands, waters and communities.

We pay our respects to Elders past and present.

# Introductions

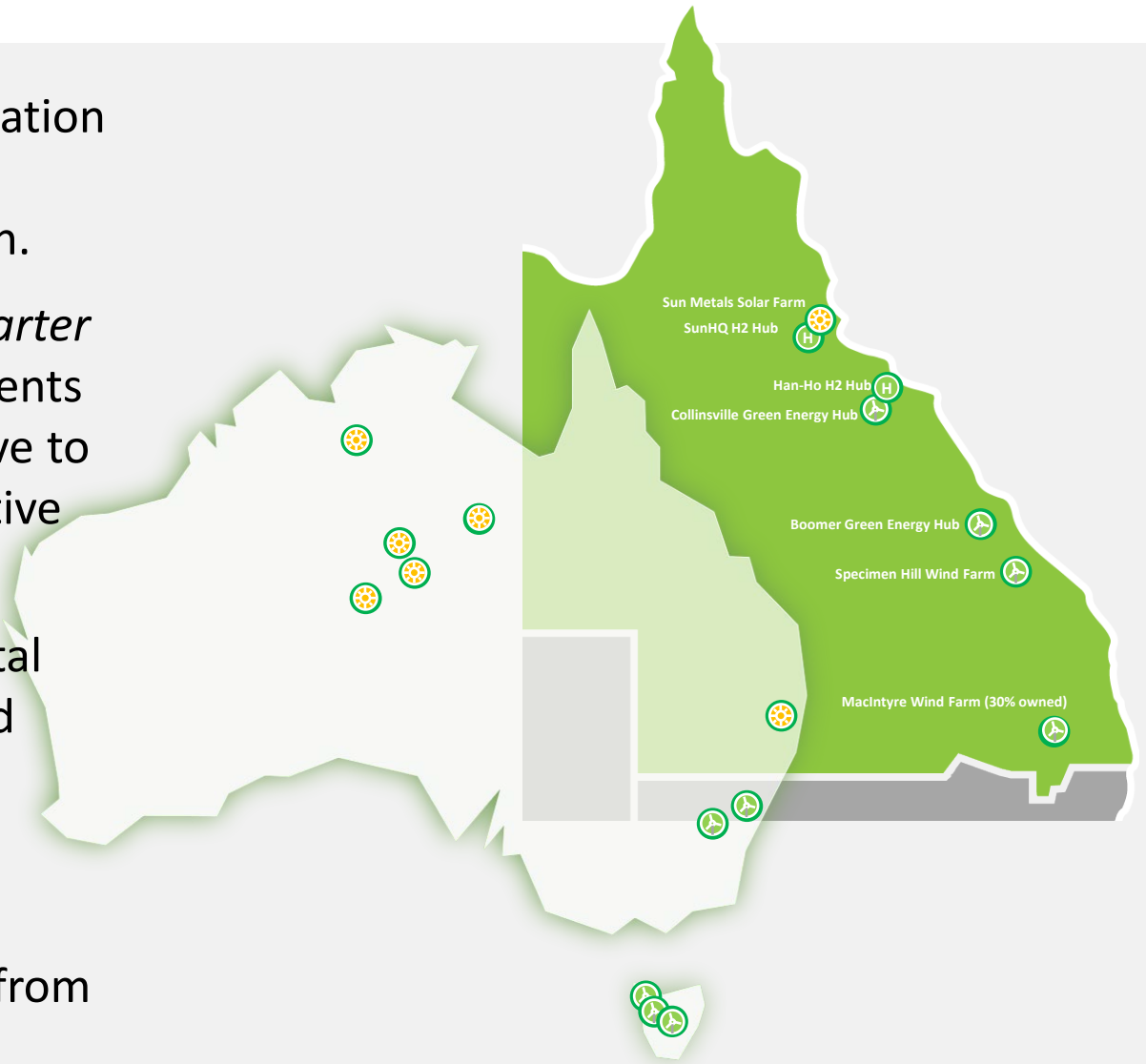
---

- Trina Jensen, Senior Development Manager
- Ettiene Stander, Land Advisor
- Gavin Lee, General Manager Development Qld
- Melissa Pisani, Communications & Engagement



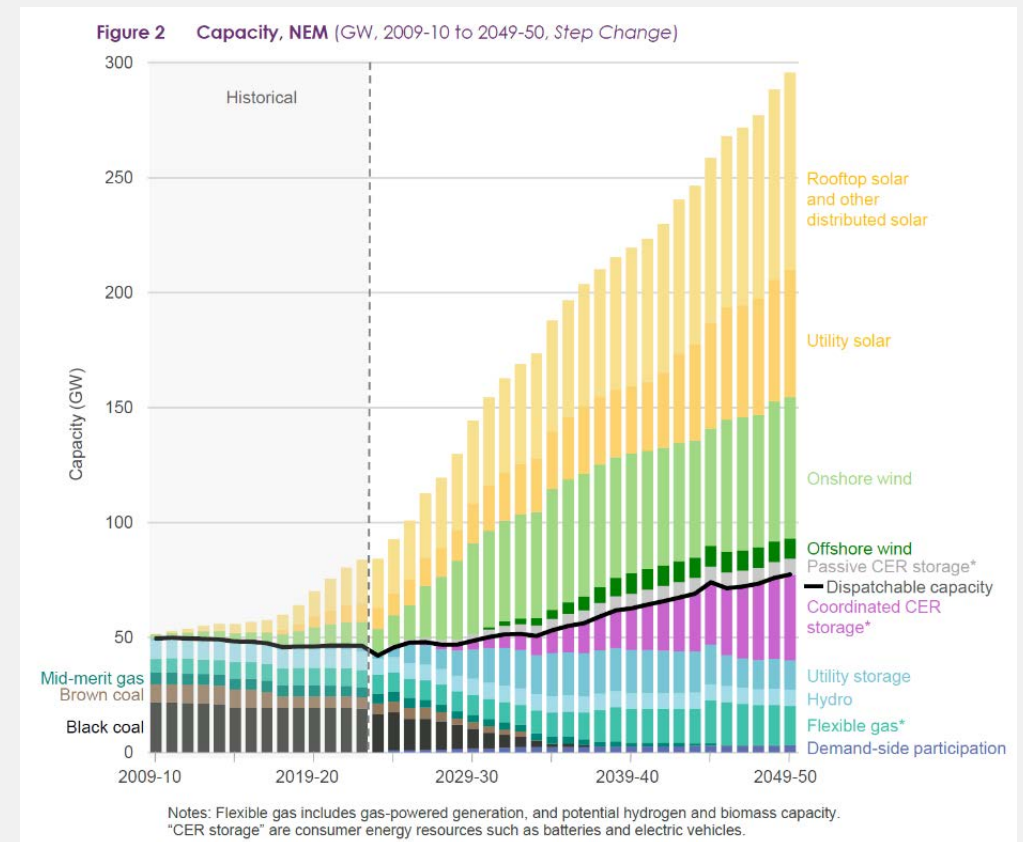
# Ark Energy

- Specialising in the greenfield development and operation of large-scale wind and solar energy generation and battery storage, and renewable hydrogen production.
- Signatory to Clean Energy Council's *Best Practice Charter for Renewable Energy Projects* - voluntary commitments to engage respectfully with communities, be sensitive to environmental and cultural values, and make a positive contribution to the regions in which we operate.
- Projects in development with a total estimated capital commitment of ~\$A19.8 billion – most in central and north Queensland.
- Subsidiary of Korea Zinc and sister company to Sun Metals Corporation, Townsville, 25-year history in Australia and committed to powering operations from renewables, with RE100 decarbonisation targets.



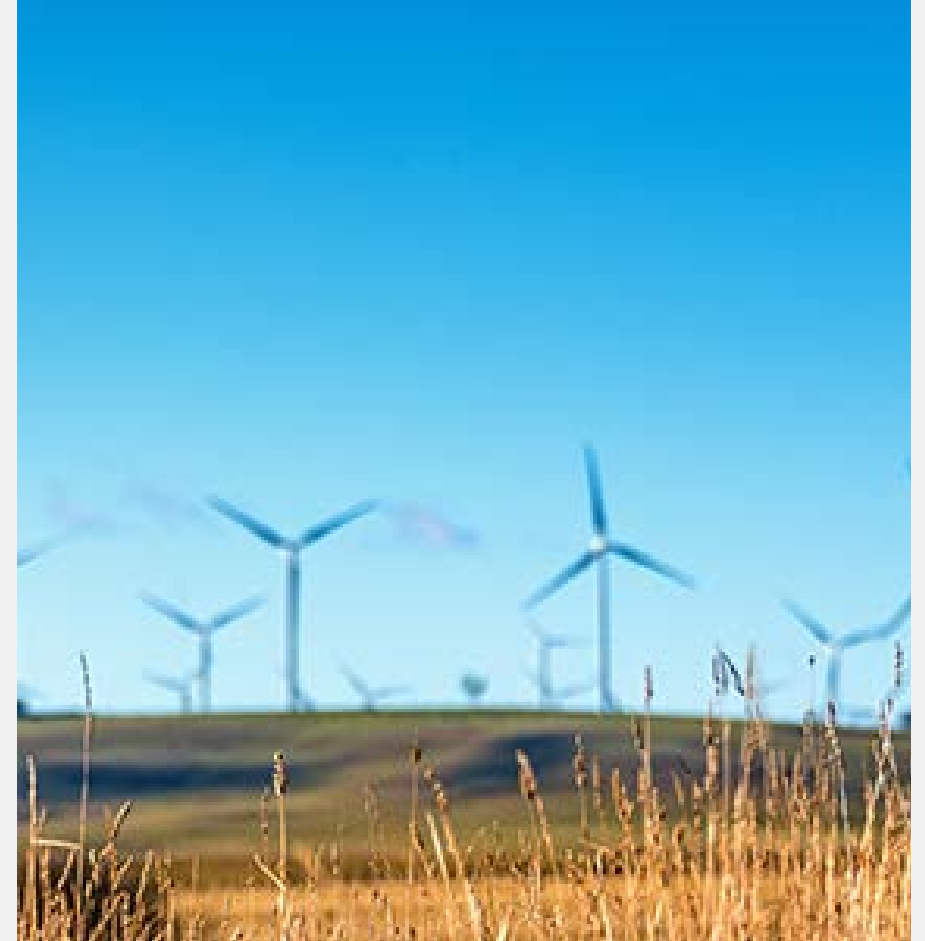
# Why does Australia need renewable energy projects?

- The national electricity market is changing, to reduce carbon emissions and meet decarbonisation targets, and electricity demand is growing.
- Australian Energy Market Operator (AEMO) *manages the electricity and gas systems and markets across Australia, to ensure Australians have access to affordable, secure and reliable energy.*
- AEMO publishes a roadmap every 2 years, Integrated System Plan (ISP) and the 2024 ISP 'Step-change' scenario forecasts that:
  - Coal generation will be retired by 2038.
  - Consumption of electricity from the grid will nearly double by 2050.
  - To meet demand Australia will require a six-fold increase in grid-scale wind and solar by 2050, to 127 GW.
- Queensland is well positioned to take advantage – with an abundance of renewable energy sources and critical minerals.



# What can a renewable energy development offer a local community?

- Coexistence with cattle grazing, to provide a reliable, supplementary source of income for landowners.
- New local employment and procurement opportunities.
- Increased patronage for local businesses.
- Funds for community benefits to support local services and facilities, community-based initiatives and projects.
- Opportunities for Traditional Owners and First Nations peoples with connection to the land.
- Better knowledge about the local natural environment and more support for land improvement initiatives.
- Generation of renewable, cleaner and cheaper electricity.



# Collinsville Green Energy Hub



Collinsville  
North Qld.



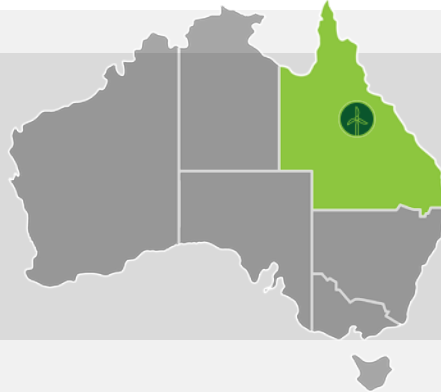
~ 250



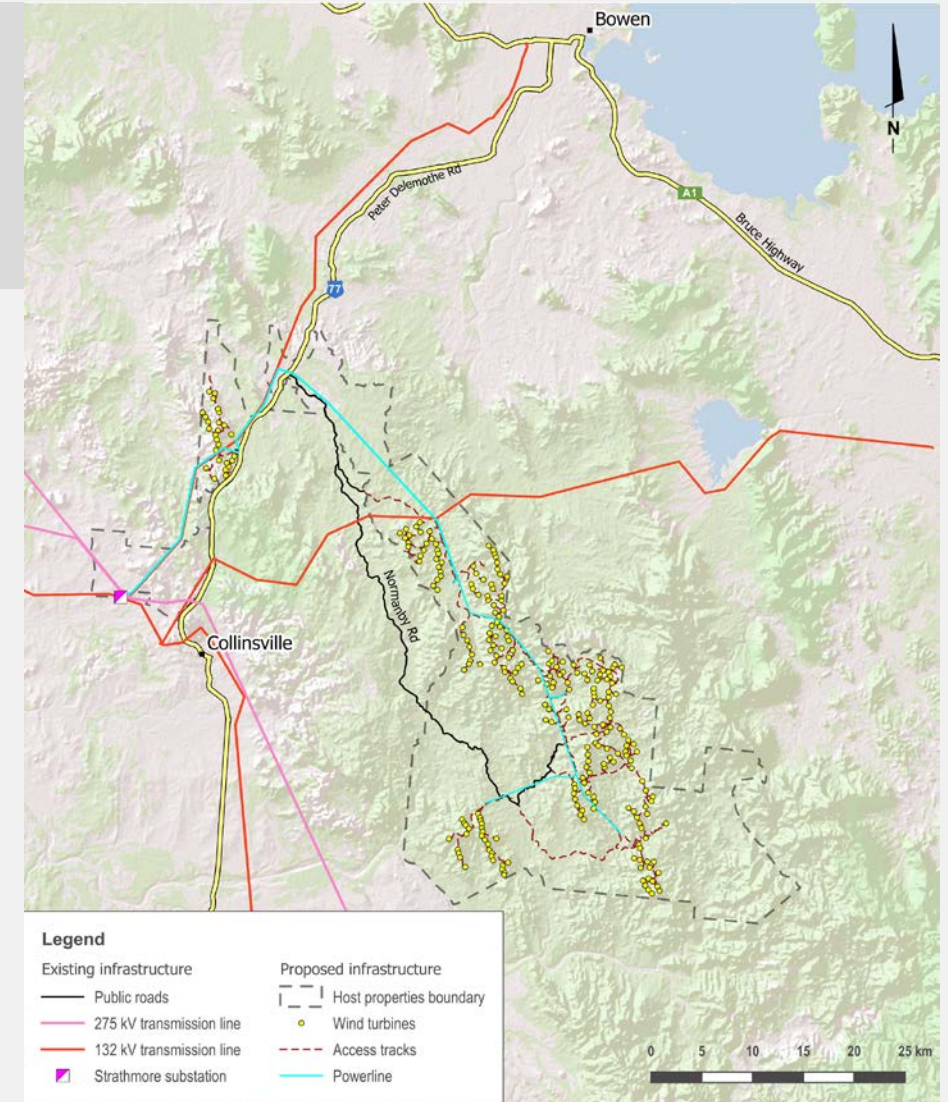
Target start of  
construction 2027



< 3,000 MW



- Pastoral properties near Collinsville, ~80 km south-west of Bowen, within the Whitsunday Regional Council LGA.
- Site selection: strong resource, avoidance of environmental values, compatible land use, few neighbours, proximity to grid connection, transport corridors and ports.
- Integrated project: ~250 wind turbines, solar, battery storage. Output capacity of up to 3,000 megawatts.
- Investment of ~A\$7.5 billion. Estimated to generate >\$1 billion in local/regional expenditure, create 1,000 direct/indirect jobs (incl. 350+ direct peak construction, 15-30 for operation).





# Environmentally responsible development

Avoiding, minimising and mitigating environmental impacts is a priority. Ark Energy's approach is to:

- Iterate the design as more information becomes available, to avoid and minimise environmental impacts to the maximum extent achievable.
- Consult with stakeholders – identify key concerns, workshop solutions, find workable compromises with meaningful benefit.
- Invest and collaborate in strategies and commitments for repair i.e. rehabilitation of the initial construction disturbance.
- Strategic initiatives to improve habitat values, including environmental offset areas and tailored management programs.
- Focus on how to achieve 'net gains' for biodiversity and key species in the project area over the longer term.



***Coexistence*** - wind turbines are a complementary land use to agriculture. Livestock are unaffected by them and will often use the towers for shelter or shade.





# Surveys & studies to date

- Resource monitoring – wind data collection (mobile and met masts); solar assessments
- Ecology (flora and fauna) - three years of surveys completed, further two years of surveys planned
- Geotechnical and constructability (civils) studies
- Engineering design – grid, electrical, balance of plant
- Cultural heritage
- Traffic and transport
- Technical studies and assessments also required for: aviation safety, scenic amenity and landscape values, aquatic ecology, water quality, noise, electromagnetic interference, natural hazards and extreme weather events, sediment and erosion control, workforce accommodation, socio-economic impacts, environmental rehabilitation, decommissioning.



# Preliminary environmental studies & findings

## Flora and fauna

Dedicated surveys in accordance with guidelines for: ecological reconnaissance, vegetation, fauna (dry and wet seasons) and targeted habitat ground truthing. Included:

- Bird and Bat Utilisation Surveys (BBUS) wet and dry seasons.
- Cameras (125) around site to collect data on Northern Quolls.

## Findings to date

- **Flora** – Black Ironbox (*Eucalyptus raveretiana*) (Vulnerable) within boundary, Brigalow TEC patches (Endangered) near water courses.
- **Fauna** - Greater Glider (*Petauroides volans*) (Endangered); Northern Quoll (*Dasyurus hallucatus*) (Endangered); Squatter Pigeon (*Geophaps scripta scripta*) (Vulnerable); White-throated Needle Tail (*Hirundapus caudacutus*) (Vulnerable, Migratory), 1 x Koala (*Phascolarctos cinereus*) (Endangered) found within boundary but not project area - habitat trees are present.

**Surface Water** - baseline water sampling and surveys completed.

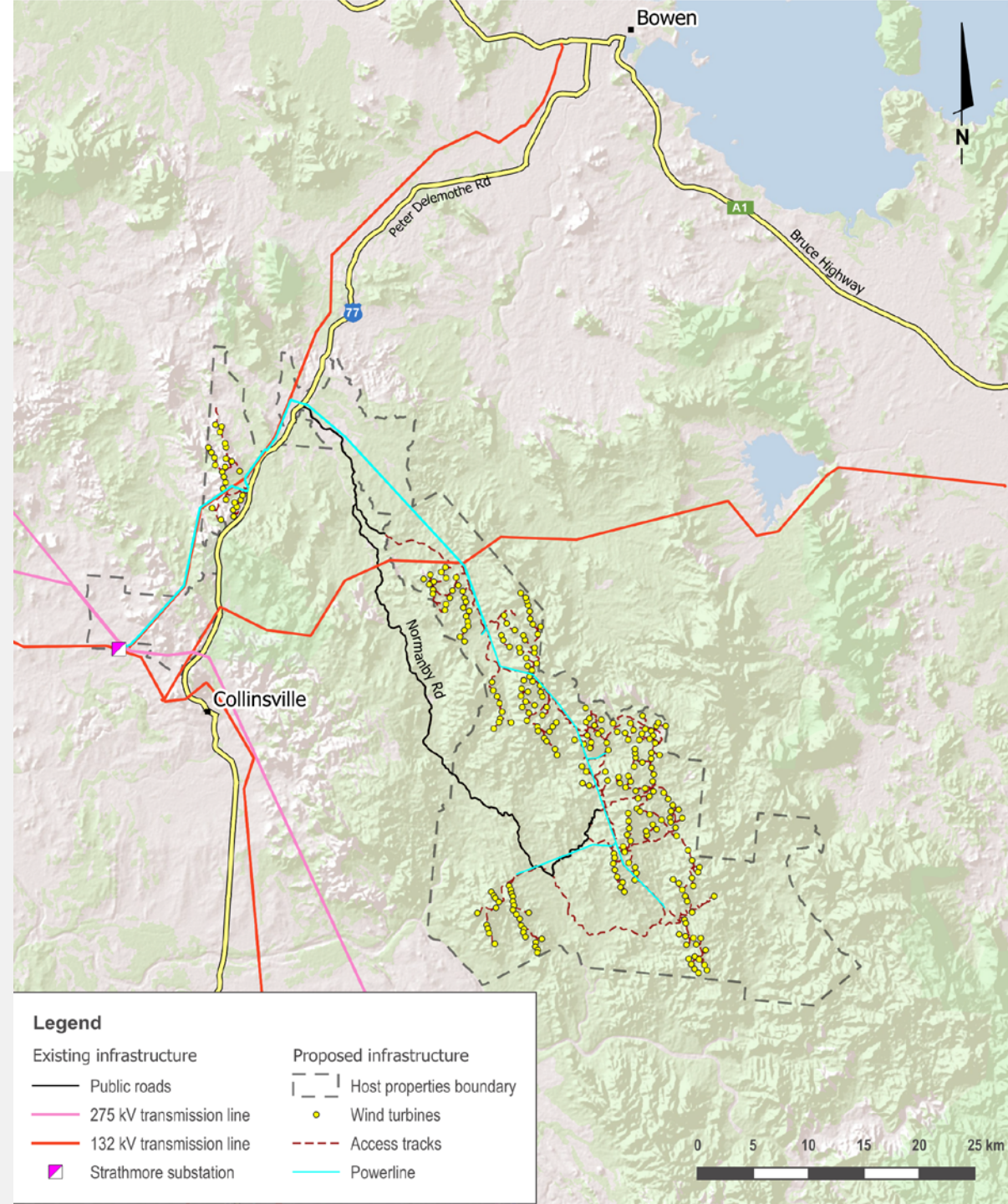




# Preliminary layout

Up to 263 wind turbines

Subject to change



# Community engagement

- Guided by the International Association for Public Participation (IAP2), Clean Energy Council's *Best Practice Charter for Renewable Energy Projects* and better practice industry guidelines.
- Open, accessible, responsive, transparent.
- Multiple and ongoing channels including website, newsletters, public sessions, participation in forums, networks and events, local information centre, feedback mechanisms.

## Focused on:

- Providing opportunities for participation.
- Maximising meaningful benefits and outcomes.

Input from local stakeholders is welcome and valued, and where practicable incorporated into project design to improve outcomes.





# Community

- Early development investments - local organisations and initiatives.
- From start of construction and for the life of the project - community benefit program to deliver contextually-appropriate and meaningful legacy benefits.



2024 Report Card Launch – 10<sup>th</sup> Waterway Health Report Card for MWI



# Employment & procurement

- Committed to maximising the local and in-region benefits, and providing full, fair and reasonable opportunity for local participation.
- Includes:
  - Working with government, industry bodies and local community to improve local industry participation and capabilities.
  - Ensuring existing local capabilities are considered when planning work scope.
  - Optimising opportunities for local businesses.
  - Employment of local personnel.
- Dedicated procurement team: [procurement@arkenergy.com.au](mailto:procurement@arkenergy.com.au) and 'Supplier' form on the project website for EOIs.

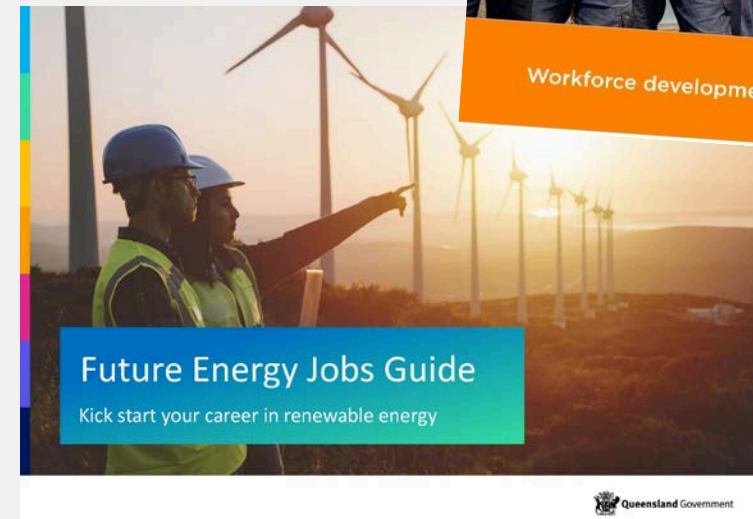




# Work opportunities

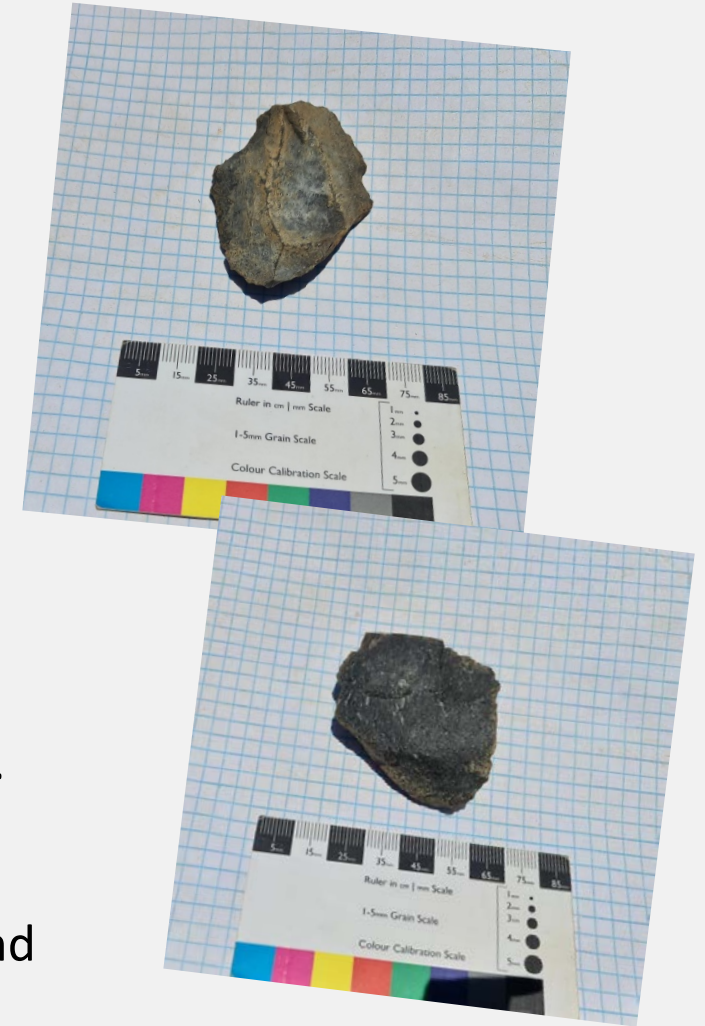
Workforce demands in civil works, construction management, electrical and underground cabling installation, infrastructure installation, and operations including:

- Electricians HV/ LV
- Engineers
- Heavy vehicle drivers
- Steel fixers, & welders
- Riggers & labourers
- Road constructors
- Crane operators
- Geotechnical testers
- Excavator operators
- Mechanical fitters
- Project managers
- Environmental officers
- Plumbers
- Fence builders
- Supervisory roles
- Surveyors
- Security officers
- Landscapers & gardeners
- Cleaners
- Maintenance staff
- Caterers
- Administration staff
- Safety officers
- Accommodation services



# First Nations

- Indigenous stakeholder interests in the project area:
  - Birriah People
  - Juru People
  - Gia/Gya People
- Committed to maximising opportunities and providing meaningful, intergenerational benefits for First Nations peoples and businesses.
- Commenced engagement in 2022. Several cultural heritage surveys undertaken.
- Ongoing engagement with Native Title holders and cultural representatives.
- Cultural Heritage Management Plan to protect cultural heritage on the site.
- Extensive survey work planned including mapping of country to preserve and support cultural knowledge gathering, participation in project surveys, engagement on agreements.



# Assessment process

The development application will be assessed and determined by the Queensland Government.

The project will also have to be approved by the Australian Government under the Commonwealth *Environment Protection and Biodiversity Conservation Act 1999* (EPBC Act), which protects matters of national environmental significance.

1. Site selection, initial concept and preliminary investigations.
2. Pre-lodgment meetings with the Queensland Government.
3. Referral to the Australian Government for review under the EPBC Act.
4. Studies and technical assessments required by the Queensland Government and EPBC Act guidelines.
5. Submission of draft development application and assessment reports.
6. Requests for further information, if required, and responses.
7. Documents accepted and placed on public exhibition for submissions.
8. Response to submissions, plus further information and amendments if required.
9. Submission of final documents.
10. Assessment by regulatory authorities.
11. Determination by the Queensland Government, and conditions (if applicable)
12. Determination by the Australian Government, and conditions (if applicable)



# Next steps

- Resource monitoring – wind and solar data.
- Cultural heritage surveys.
- Ecology surveys.
- Civil and electrical design.
- Stakeholder and community consultation.
- Refinement of design based on further studies & consultation.

## Target dates

- Referral to the Australian Government for review under the Commonwealth *Environment Protection and Biodiversity Conservation Act 1999* (EPBC Act) - Q2/3 2025.
- Development application lodged with the Queensland Government – Q4 2025

- Management plans to be prepared include:
  - Environmental Management Plan
  - Bird and Bat Management Plan
  - Fauna Management Plan
  - Workforce Accommodation Plan
  - Vegetation Management Plan
  - Weed and Pest Management Plan
  - Rehabilitation Plan
  - Sediment and Erosion Management Plan
  - Offset Strategy
  - Surface Water Quality / Great Barrier Reef Assessment
  - Lifecycle Greenhouse Gas Assessment





# Information & engagement channels

- Collinsville Green Energy Hub Office & Information Centre: 47 Railway Rd, Collinsville.
- Website, including feedback and supplier forms - [www.collinsvillehub.com.au](http://www.collinsvillehub.com.au)
- Direct enquiries to project team - [info@collinsvillehub.com.au](mailto:info@collinsvillehub.com.au), 1800 731 296.
- Regular newsletters - <https://arkenergy.com.au/mailling-list-details/>
- Briefings / meetings.
- Public information sessions
- Local community events



# Questions & discussion

---