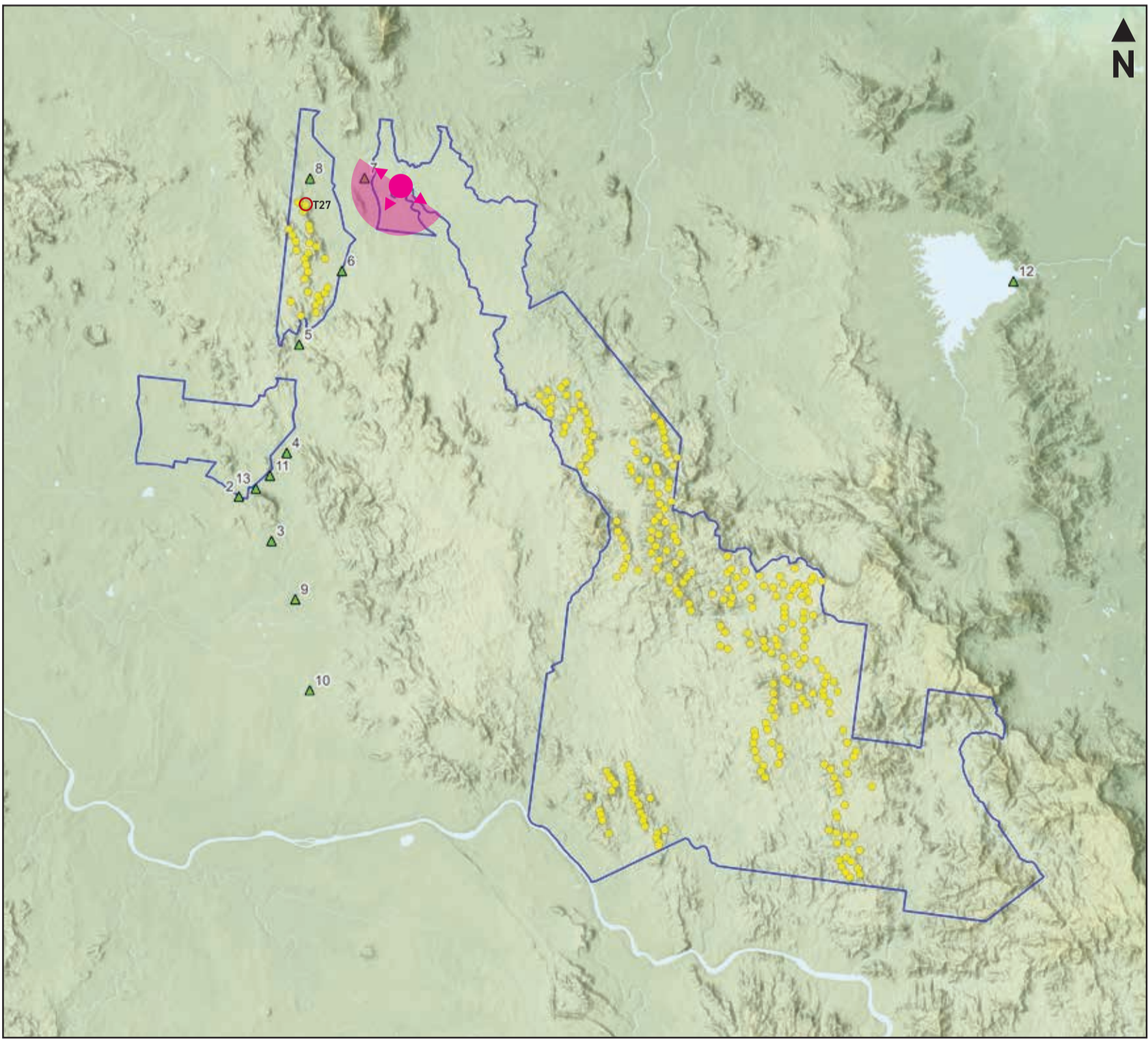


# Collinsville Green Energy Hub - 265 Wind Turbine Layout (Subject to Change)

130° Photomontage view facing WSW from Normanby Rd turnoff - Viewpoint 1 (wind turbine dimensions: 150m hub, 172m rotor - 236m tip height)



Aerial: viewpoint location and photograph direction shown by the pink marker.



Site Map: viewpoint location and direction shown by the pink marker.

Viewpoint information

**Horizontal field of view:** 130°

**Bearing to closest turbine:** 257.3° (T27 - red marker)

**Distance to closest turbine (m):** 7,370m

**Elevation:** 207.7m

**Photo Taken:** 7:38 AM on 5th of Aug 2024

**Camera:** Nikon D810, 50mm Prime Lens

**Photo Coordinates:** E: 597,447 N: 7,754,288

**Projection:** WGS 84/UTM Zone 55S (EPSG: 32755)

**Original Format:** A1 Landscape

**Turbine dimensions:** 150m hub height, 172m rotor diameter = 236m tip height

\* Photomontage and wireframe provide a 'representation' of the projects visibility for the purpose of discussion. The layout as shown may be subject to change in accordance with the planning process. The images provide a reasonable impression of wind turbine scale and distance to wind turbines; however, cannot be 100% accurate. A static image cannot convey wind turbine blade movement, different lighting, weather and seasonal conditions that vary through time.