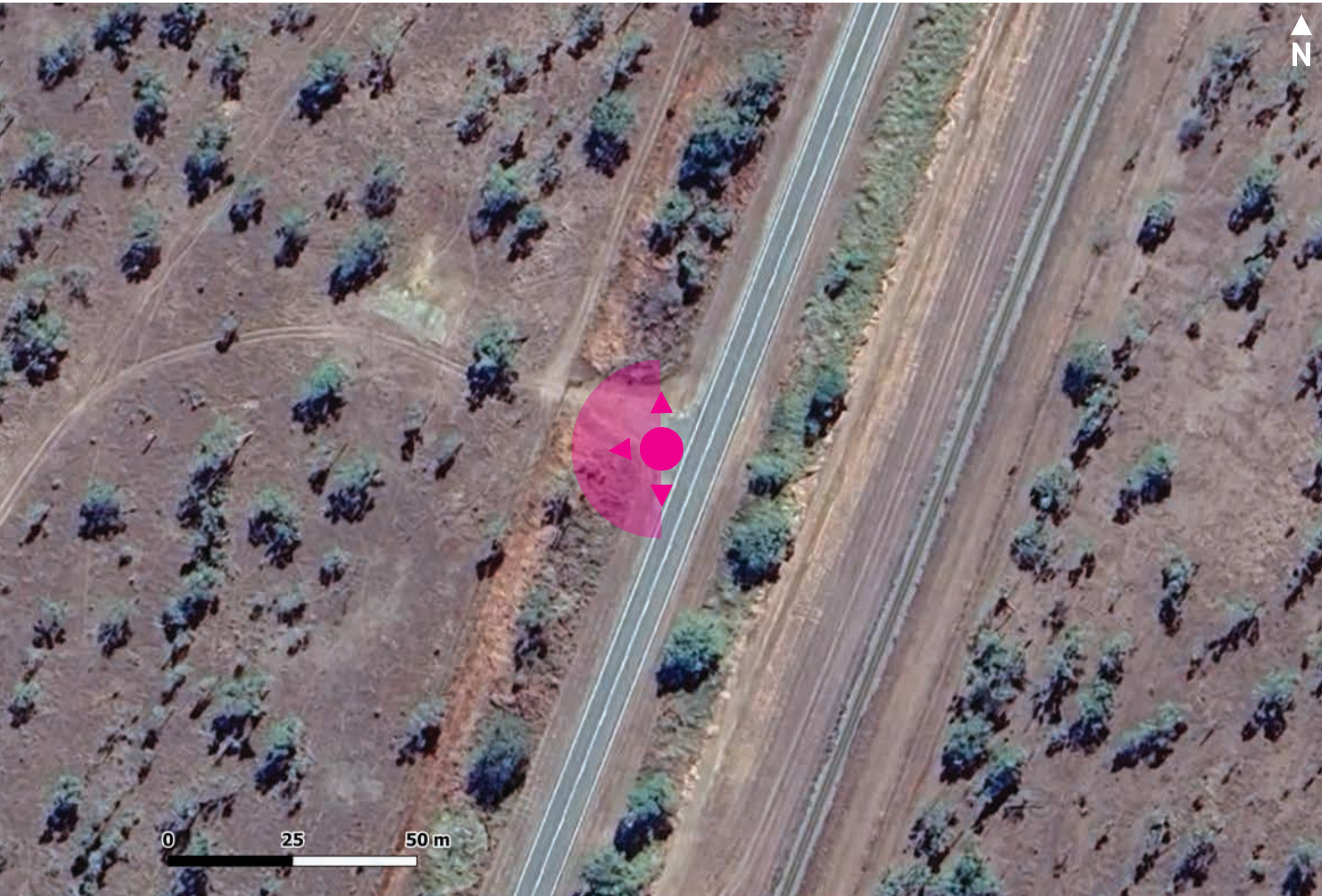
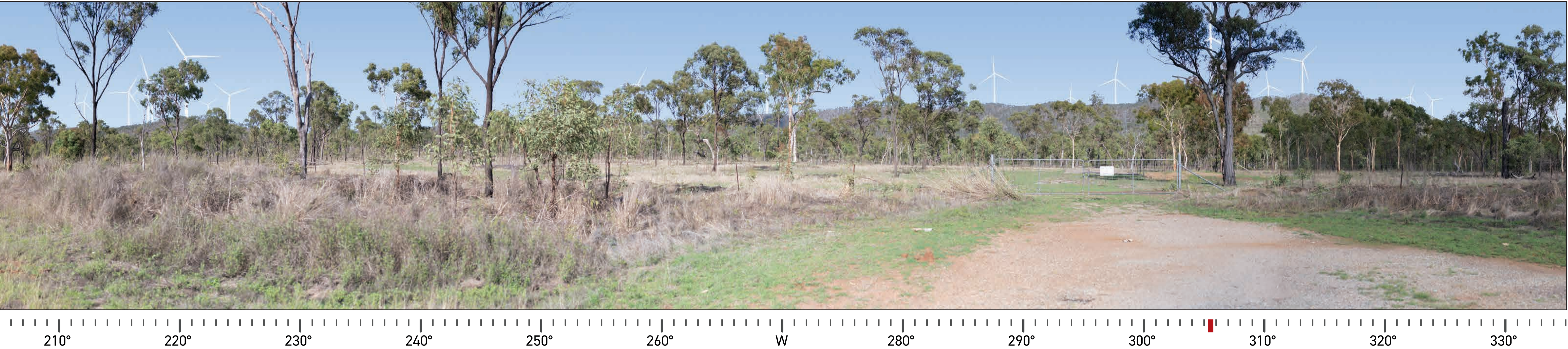
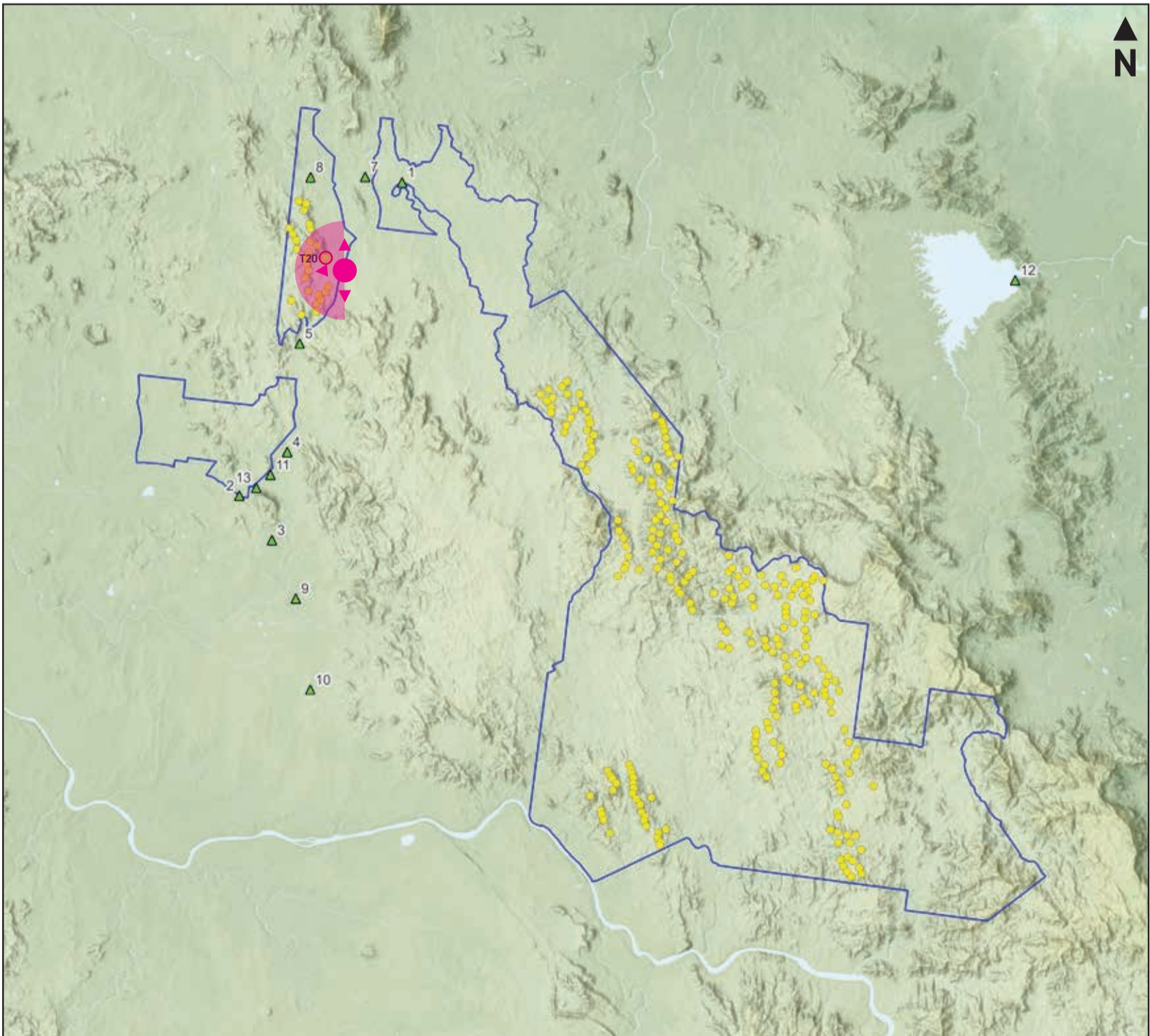


Collinsville Green Energy Hub - 265 Wind Turbine Layout (Subject to Change)

130° Photomontage view facing west from Peter Delemothe Rd - Viewpoint 6 (wind turbine dimensions: 150m hub, 172m rotor - 236m tip height)



Aerial: viewpoint location and photograph direction shown by the pink marker.



Site Map: viewpoint location and direction shown by the pink marker.

Viewpoint information

Horizontal field of view: 130°

Bearing to closest turbine: 305.5° (T20 - red marker)

Distance to closest turbine (m): 1579.7 m

Elevation: 252.7m

Photo Taken: 7:48 AM on 7th of Dec 2023

Camera: Nikon D850, 50mm Prime Lens

Photo Coordinates: E: 592,966 N: 7,747,685

Projection: WGS 84/UTM Zone 55S (EPSG:32755)

Original Format: A1 Landscape

Turbine dimensions: 150m hub height, 172m rotor diameter = 236m tip height

* Photomontage and wireframe provide a 'representation' of the projects visibility for the purpose of discussion. The layout as shown may be subject to change in accordance with the planning process. The images provide a reasonable impression of wind turbine scale and distance to wind turbines; however, cannot be 100% accurate. A static image cannot convey wind turbine blade movement, different lighting, weather and seasonal conditions that vary through time.