

# Collinsville Green Energy Hub



Photograph of the project area

## Project design

During the early development stage a key focus is identifying site constraints to determine suitable locations for project infrastructure and the proposed overall project design for the development application.

After almost three years of stakeholder engagement and preliminary studies including for ecology, surface water, wind monitoring and geotechnical, the project design has undergone 38 iterations.

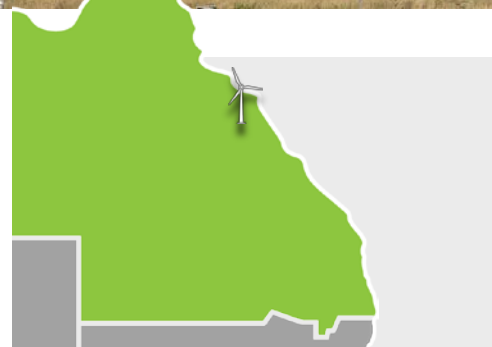
The proposed layout consists of 268 wind turbines, a battery energy storage system and ancillary infrastructure. This may be the layout submitted for the application however it remains subject to change as more information becomes available through stakeholder engagement, and technical and environmental studies, and the design is further refined.

## Next steps

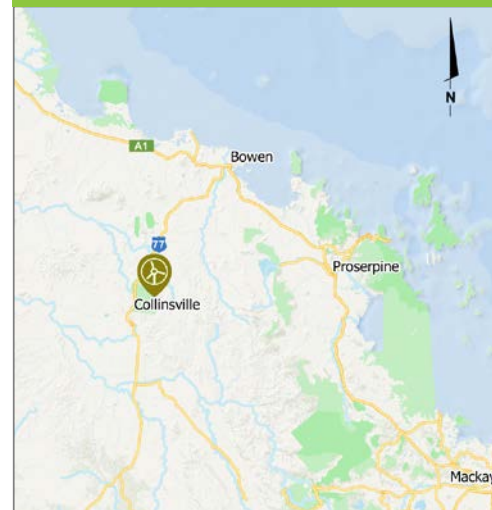
The project will require approvals from the Commonwealth Government, the Queensland Government and Whitsunday Regional Council.

Several technical assessments and management plans will have to be completed for the application, including for fauna and flora, scenic amenity and landscape values, social impact, noise, aviation safety, traffic and transport, natural hazards and extreme weather events, water quality, sediment and erosion control, workforce accommodation, environmental rehabilitation and decommissioning.

Ark Energy is now preparing to enter the proposal into the formal assessment process by referring it to the Australian Department of Climate Change, Energy, the Environment and Water (DCCEEW) for review under the Commonwealth *Environment Protection and Biodiversity Conservation Act 1999* (EPBC Act), which protects matters of national environmental significance. This is due to occur in the coming months.



## Location



The project area is east of Collinsville and about 80 km south-west of Bowen.

- Expected to create 350+ jobs during construction and 15-30 ongoing jobs for operation.
- Expected to generate ~\$1 billion in local and regional expenditure.
- Significant economic benefits for the Whitsunday, Mackay, Burdekin and Isaac Regional Council areas.
- Capacity of up to ~3,000 megawatts
- Target start of construction - 2027
- Target for completion - 2031

## Information session – Saturday, 24 May 2025

Local residents and community members are invited to join the Collinsville Green Energy Hub project team for an update on work done to date and next steps for the project.

The session will be held at the project's information centre in Collinsville.

**9am to 11am, Saturday, 24 May 2025**

**Collinsville Green Energy Hub Information Centre, 47 Railway Road, Collinsville**

Refreshments will be provided. To assist with catering please RSVP to [info@collinsvillehub.com.au](mailto:info@collinsvillehub.com.au) by Wednesday 21 May 2025.

Everyone is welcome. We look forward to meeting attendees and the opportunity to discuss the project and answer questions.

## Planning & assessment

### Queensland Government

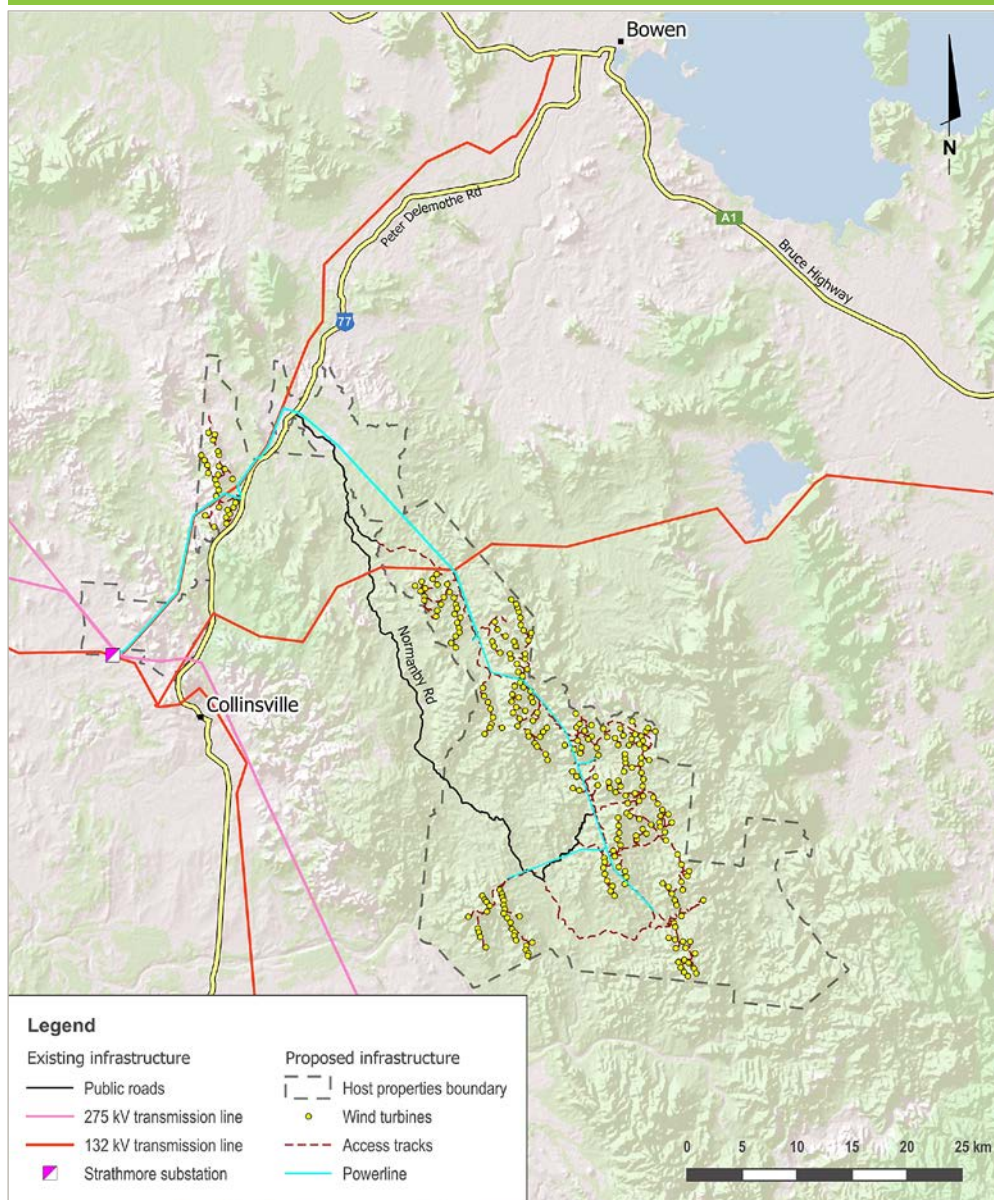
- 1 Site selection, initial concept, preliminary investigations
- 2 Pre-lodgment meetings
- 3 Studies and technical assessments to fulfil requirements (State code 23) **WE ARE HERE**
- 4 Development application and assessments lodged
- 5 Requests for further information (if required) and response
- 6 Documents accepted and placed on public exhibition
- 7 Response to submissions, further information (if required)
- 8 Final documents submitted
- 9 Assessment
- 10 Decision notice issued

+

### Australian Government

- 1 Referral to the Department of Climate Change, Energy, the Environment and Water (DCCEEW) for review under the *Environment Protection and Biodiversity Conservation Act 1999* (EPBC Act) **Est Q2 2025**
- 2 Determination and advice on assessment pathway
- 3 Assessment guidelines issued
- 4 Assessment work to fulfil requirements
- 5 Draft assessment submitted for adequacy review
- 6 Requests for further information (if required) and response
- 7 Assessment accepted and placed on public exhibition
- 8 Response to submissions, further information (if required)
- 9 Final assessment submitted
- 10 Determination

## Collinsville Green Energy Hub indicative layout



The project would be located across several rural properties south-west of Bowen. They are currently used for livestock grazing, which is a complementary land use to renewable energy generation.

## Questions and local input welcome

Input from local stakeholders is welcome and valued, and where practicable will be considered for the project's design to improve outcomes and community benefits.

Feedback and questions can be sent directly to the project team at any time via the online feedback form on the website or the contact details below.

Business owners who are interested in providing services to the project are also invited to register their interest through the website's 'Suppliers' form.

## More information

**Visit** - Collinsville Green Energy Hub Office & Information Centre, 47 Railway Road, Collinsville. Check window/website for open times.

**Tel** - 1800 731 296

**Email** - [info@collinsvillehub.com.au](mailto:info@collinsvillehub.com.au)

**Newsletters** - Register at [arkenergy.com.au/mailling-list-details](http://arkenergy.com.au/mailling-list-details) for email news, or to receive newsletters in the mail, send us your postal address and a request to be added to the direct mail list.

**Website** - [collinsvillehub.com.au](http://collinsvillehub.com.au) or scan QR code right



Scan QR code to visit the project website