

Bowmans Creek Wind Farm



A photomontage showing what the wind farm would look like from Bowmans Creek Road, looking west from about 1 km away from the nearest wind turbine.

Stage 1 approved

The Australian Department of Climate Change, Energy, the Environment and Water (DCCEEW) gave final approval for Bowmans Creek Wind Farm (Stage 1) under the Commonwealth *Environment Protection and Biodiversity Conservation Act 1999* (EPBC Act) in July 2024. This followed approval of the development application by the NSW Independent Planning Commission in February 2024.

The EPBC Act approval decision notice with final conditions is available online from the Bowmans Creek Wind Farm page in the EPBC Public Portal (EPBC Number 2020/8631) at <https://epbcpublicportal.environment.gov.au/>

Assessment requirements issued for Stage 2

Bowmans Creek Wind Farm Stage 2 is a proposed extension involving land in the middle of the Stage 1 project area. It would take advantage of the infrastructure planned for Stage 1 and add a further 21 wind turbines and ~120 megawatts (MW) of capacity. Stage 2 is a separate project and will require a separate approval.

Thank you to the community members who attended the information session for Stage 2 at Mt Olive Community Centre in April last year. The presentation and information materials shared at that session are now available in the session report under the 'News' tab on the project website.

Ark Energy lodged a Scoping Report for Stage 2 in June 2024 and in August 2024 the NSW Department of Planning, Housing and Infrastructure (DPHI) issued Planning Secretary's Environmental Assessment Requirements (SEARs) for the project's environmental impact statement (EIS). The proposal was also referred to DCCEEW for review under the EPBC Act and in March 2025 DCCEEW determined it to be a controlled action (EPBC Number 2024/10013) with assessment under the bilateral agreement between the NSW and Commonwealth Governments.

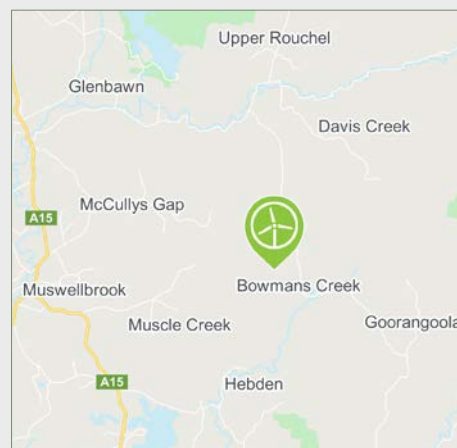
Next steps

Geotech work for Stage 1 will commence in the coming months. Environmental and technical studies as required by the SEARs for Stage 2 are underway, including for biodiversity, noise, heritage, visual impact, economic impact, traffic and transport. The EIS for Stage 2 is due to be lodged in 2026.

Planning documentation for Stage 2 is available online from the NSW Government's Major Projects Portal. Scan QR code right or visit: <https://www.planningportal.nsw.gov.au/major-projects/projects/bowmans-creek-wind-farm-stage-2>



Location



The Bowmans Creek Wind Farm project area is about 10 km east of Muswellbrook and located within the Hunter-Central Coast Renewable Energy Zone. Stage 1 is approved, and expected to deliver:

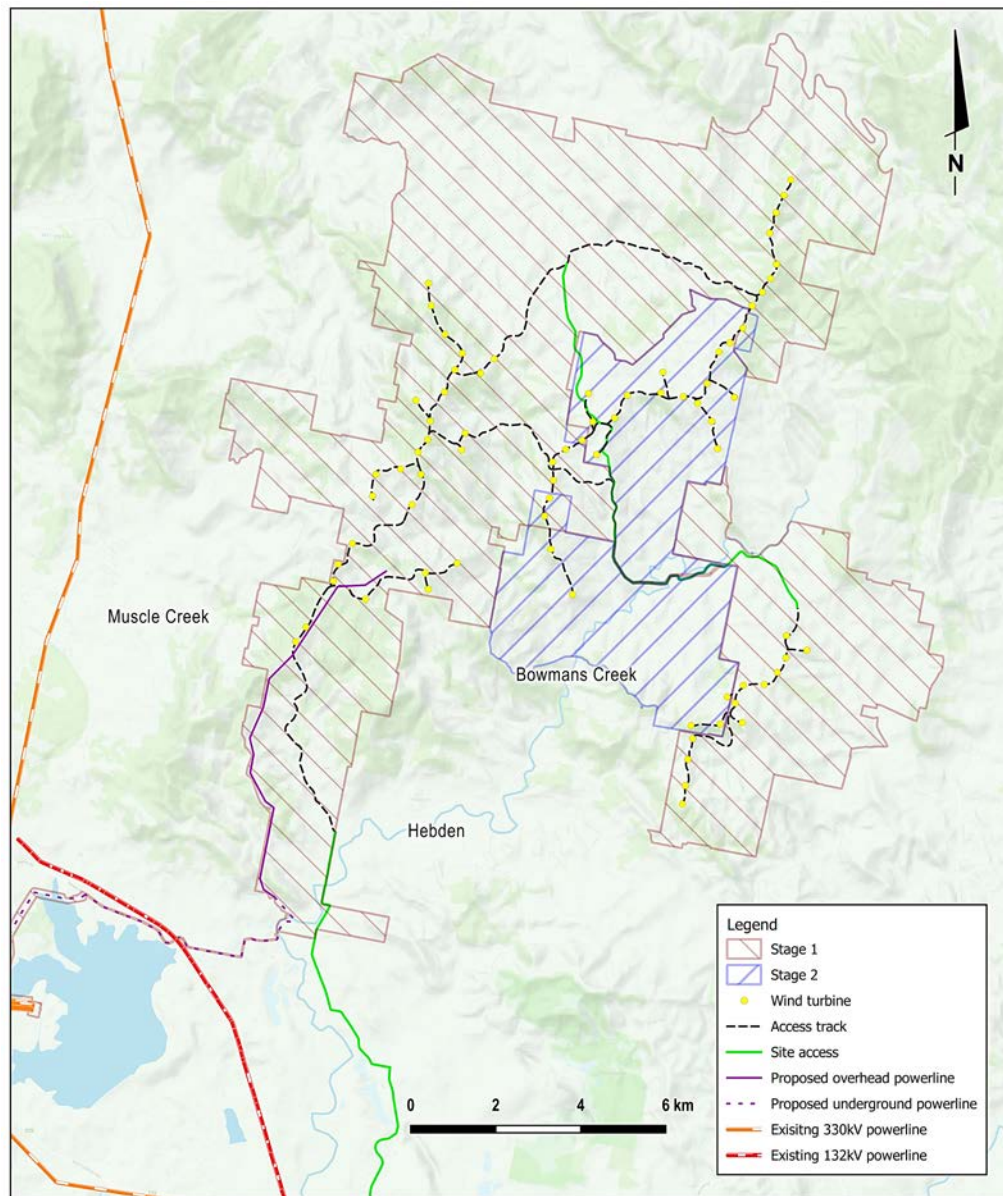
- 54 wind turbines with a generation capacity of 335 megawatts.
- More than 200 direct and indirect jobs in the regional area during construction, and 30 direct and indirect jobs during operation.
- \$179 million in the regional economy through direct and indirect expenditure, value-add and household income.
- Neighbour benefit program and significant community benefit funds from start of generation and for the life of the wind farm.

Planning & assessment Stage 2

Utility-scale wind farms in NSW are considered State Significant Development and assessed by the NSW Government.

- 1 Site selection and preliminary investigations ✓
- 2 Initial concept and consultation ✓
- 3 Referral to the Australian Department of Climate Change, Energy, the Environment and Water (DCCEEW) for review under the Commonwealth *Environment Protection and Biodiversity Conservation Act 1999* (EPBC Act). ✓
- 4 Scoping Report submitted to the NSW Department of Planning, Housing and Infrastructure (DPHI) ✓
- 5 Determination on EPBC Act referral by DCCEEW ✓
- 6 Secretary's Environmental Assessment Requirements (SEARs) for the Environmental Impact Statement (EIS) issued by DPHI ✓
- 7 Studies, assessments, design **WE ARE HERE**
- 8 Finalising EIS for lodgment
- 9 Development application (DA) and EIS lodged with DPHI
- 10 DA and EIS on public exhibition and open for submissions
- 11 Response to submissions and requests for further information (if required)
- 12 Assessment by DPHI
- 13 DPHI assessment report and recommendation
- 14 Final determination by DCCEEW

Bowmans Creek Wind Farm proposed layout



The Bowmans Creek Wind Farm site is about 10 km from Muswellbrook in the Hunter region of NSW.

Feedback welcome

Ark Energy appreciates the importance of involving local stakeholders, and input from interested community members is welcome and valued.

Feedback and questions can be sent directly to the project team at any time via the online feedback form on the website or the contact details below.

Where practicable input from local stakeholders will be factored into the project's design to improve outcomes and community benefits.

Companies interested in providing services to the project are also invited to register their interest through the website's 'Suppliers' form.

More information

Tel - 1800 731 296

Email - info@bowmanscreekwindfarm.com.au

Register for newsletters - arkenergy.com.au/mailling-list-details

Website - bowmanscreekwindfarm.com.au or scan QR code right



Scan QR code
to visit the website