

St Patricks Plains Wind Farm



St Patricks Plains Wind Farm Information Centre in Bothwell

Project update

On 30 July 2024 at a special council meeting in Bothwell, Ark Energy received planning approval for the St Patricks Plains Wind Farm from Central Highlands Council in its capacity as Planning Authority. The approval included environmental conditions set by the Board of the Environment Protection Authority Tasmania (EPA).

The EPA also assessed matters protected under the Commonwealth *Environment Protection and Biodiversity Conservation Act 1999* (EPBC Act), and found "the proposal is capable of being managed in an environmentally acceptable manner".

The St Patricks Plains Wind Farm has been in development since 2019 and undergone several design iterations including removal of 20 wind turbines to avoid environmental impacts, minimise visual impacts and address community concerns.

The approval was appealed by the No Turbine Action Group and will now be considered by the Tasmanian Civil and Administrative Tribunal (TASCAT) in the first half of 2025.

Next steps

If the project is approved by TASCAT it will also require final approval from the Australian Department of Climate Change, Energy, the Environment and Water under the EPBC Act. Work to address EPBC Act requirements is underway.

Local jobs and opportunities

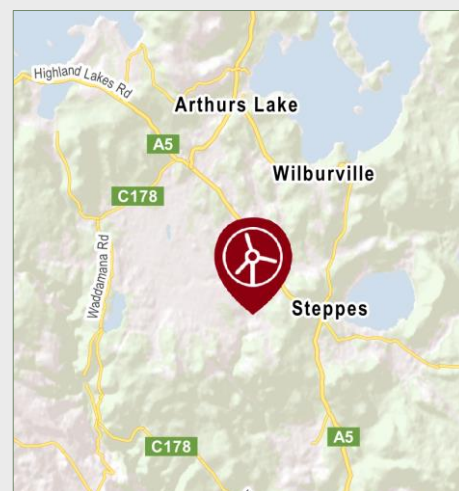
Ark Energy is committed to supporting local participation. Please continue to register your interest to provide services and accommodation by emailing details to info@stpatricksplainswindfarm.com.au with 'Supplier enquiry' as the subject heading. This information will then be added to the project's interested supplier database. The start of construction is currently targeted for 2026.

To date we have received interest from more than 40 Tasmanian-based companies and owners of 50 local properties. We thank the local community for the ongoing support, and the growing list of local residents, suppliers and business owners excited by the opportunity to be part of this project. We look forward to updating you next year.

Information centre - holiday hours

The St Patricks Plains Wind Farm Information Centre in Bothwell will be closed from 23 December 2024 and reopen from 10 January 2025 at the usual hours of 10am - 1pm every Friday. In the meantime, questions and feedback are welcome at anytime and can be sent directly to the project team via info@stpatricksplainswindfarm.com.au

Location



The project area for the St Patricks Plains Wind Farm is about 10 km south-east of Miena and 25 km north of Bothwell in the Central Highlands area of Tasmania.

Key project information:

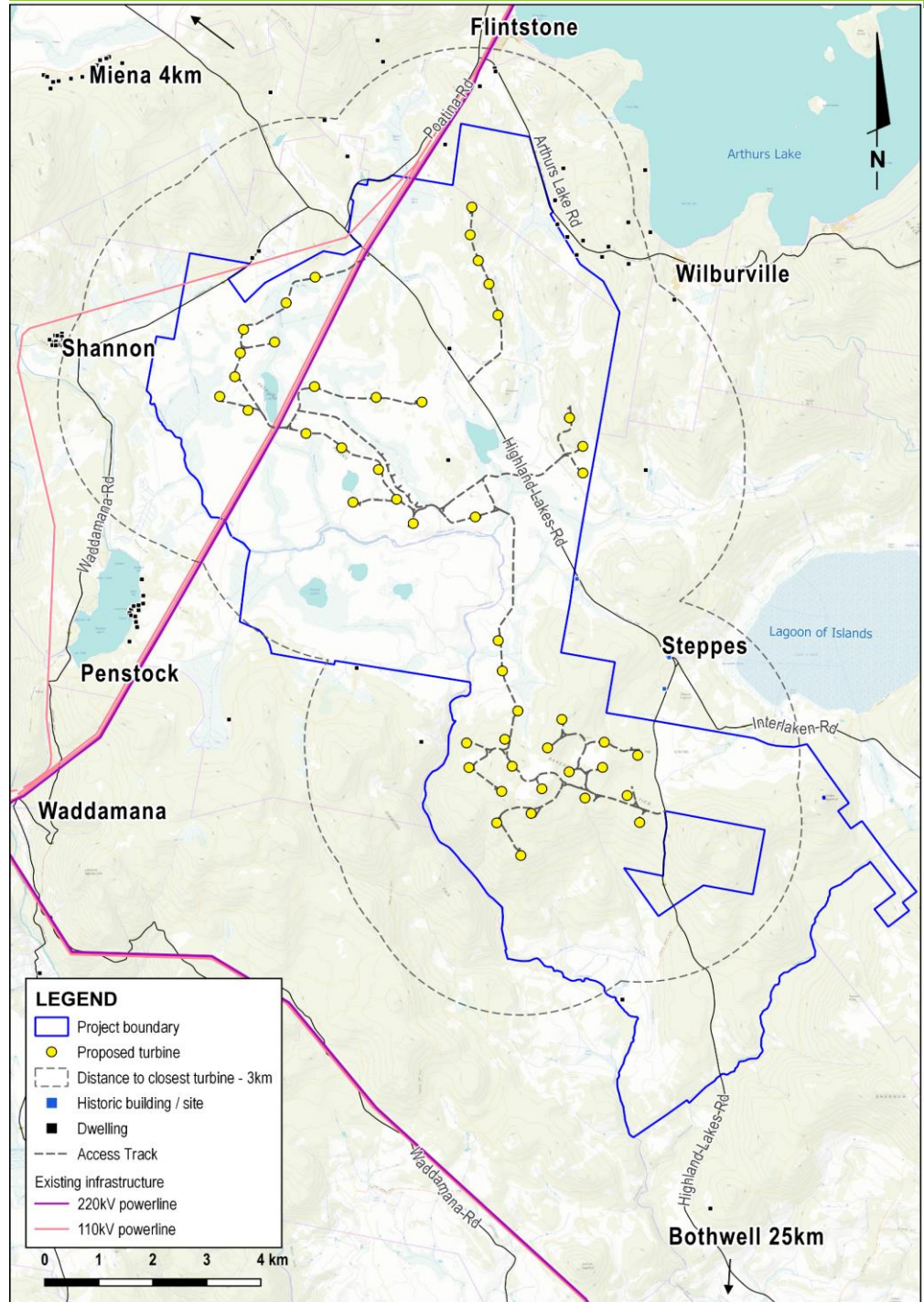
- Up to 47 wind turbines.
- Wind turbine tip height of 231m.
- Up to 300 megawatts of renewable energy.
- Up to 200 jobs during construction.
- Up to 20 full-time jobs during operation.
- Construction period of 24 months.
- Community Benefit Fund for the life of the wind farm.

Planning & assessment

Following appeal the Development Application will be determined by the Tasmanian Civil & Administrative Tribunal (TASCAT). Approval is also required from the Commonwealth Government under the *Environment Protection and Biodiversity Conservation Act 1999* (EPBC Act).

- 1
Site selection and preliminary investigations
✓
- 2
Referral to the Australian Department of Climate Change, Energy, the Environment and Water (DCCEEW) under the EPBC Act.
* Determined a Controlled Action with assessment by the Environment Protection Authority Tasmania (EPA) under bilateral agreement (Ref 2019/8497).
✓
- 3
Notice of Intent lodged with the EPA
✓
- 4
Project Specific Guidelines for the EIS issued by the EPA
✓
- 5
Studies, assessments, site design
✓
- 6
Preparing EIS for lodgment
✓
- 7
Development application (DA) and EIS submitted to Central Highlands Council
✓
- 8
EIS referred by Council to the EPA
✓
- 9
EIS on exhibition for public comment
✓
- 10
Responses to submissions and EPA request for additional information.
✓
- 11
Assessment by the EPA
✓
- 12
If approved, EPA conditions provided to Council
✓
- 13
Assessment by Council
✓
- 14
Determination by Council – Approved
✓
- 15
Council decision appealed to TASCAT
WE ARE HERE
- 16
Decision by TASCAT
- 17
Determination by DCCEEW

St Patricks Plains Wind Farm site map – 47 wind turbines



Thank you

Thank you to everyone who engaged with the project team this year.

We wish everyone a safe and enjoyable festive season and look forward to updating you again in 2025.

More information

Visit - St Patricks Plains Wind Farm Information Centre, 16a Patrick Street, Bothwell, 7030.

Phone - 1800 731 296.

Email - info@stpatricksplainswindfarm.com.au

Register for updates - arkenergy.com.au/mailling-list-details

Website - stpatricksplainswindfarm.com.au or scan QR code



Scan QR code to visit the project website