

# Burrendong Wind Farm



Photomontage of what the wind farm would look like from Wallawaugh Rd, Hargraves, approximately 2 km away.

## Response to submissions

The development application and environmental impact statement (EIS) for the Burrendong Wind Farm was submitted in November 2023 and placed on public exhibition from 16 November until 20 December 2023.

Thank you to everyone who attended the EIS information session in Mudgee at the end of last year and who took the time to read the EIS documents and make a submission.

Several issues were raised in submissions including visual impact, biodiversity, and impacts on Aboriginal and cultural heritage. Ark Energy has now completed and uploaded its Submissions Report and updated technical assessments including for landscape and visual impact, noise and a revised biodiversity assessment report.



An information session to review the EIS was held in Mudgee on 8 December 2023

## Amendment Report

Ark Energy has also submitted an Amendment Report outlining key updates made to the proposal to reduce potential impacts. These include:

- Removal of the northern 330 kV powerline option.
- Realignment of the southern 330 kV powerline route to avoid proposed Phoenix Pumped-Hydro infrastructure.
- Minor realignment of sections of proposed access tracks to reduce impacts on Box Gum Woodland.
- Addition of an alternate site access route through Cudgegong River Holiday Park, next to Lake Burrendong.

The Submissions Report and Amendment Report are due to be available from the Burrendong Wind Farm page in the NSW Major Projects Portal by the end of 2024.

Visit: [planningportal.nsw.gov.au/major-projects/projects/burrendong-wind-farm](https://planningportal.nsw.gov.au/major-projects/projects/burrendong-wind-farm) or scan QR code right.



## Location



The project area for the proposed Burrendong Wind Farm is east of Lake Burrendong, within Dubbo Regional Council and Mid-Western Regional Council areas, in the central west region of New South Wales.

The site has an excellent wind resource and is within the Central West-Orana Renewable Energy Zone, an area identified as optimal for new renewable energy projects due to the natural resources and proximity to existing or planned network infrastructure.

New renewable energy projects are required to help the NSW Government meet its targets to halve emissions by 2030 and achieve net zero by 2050.

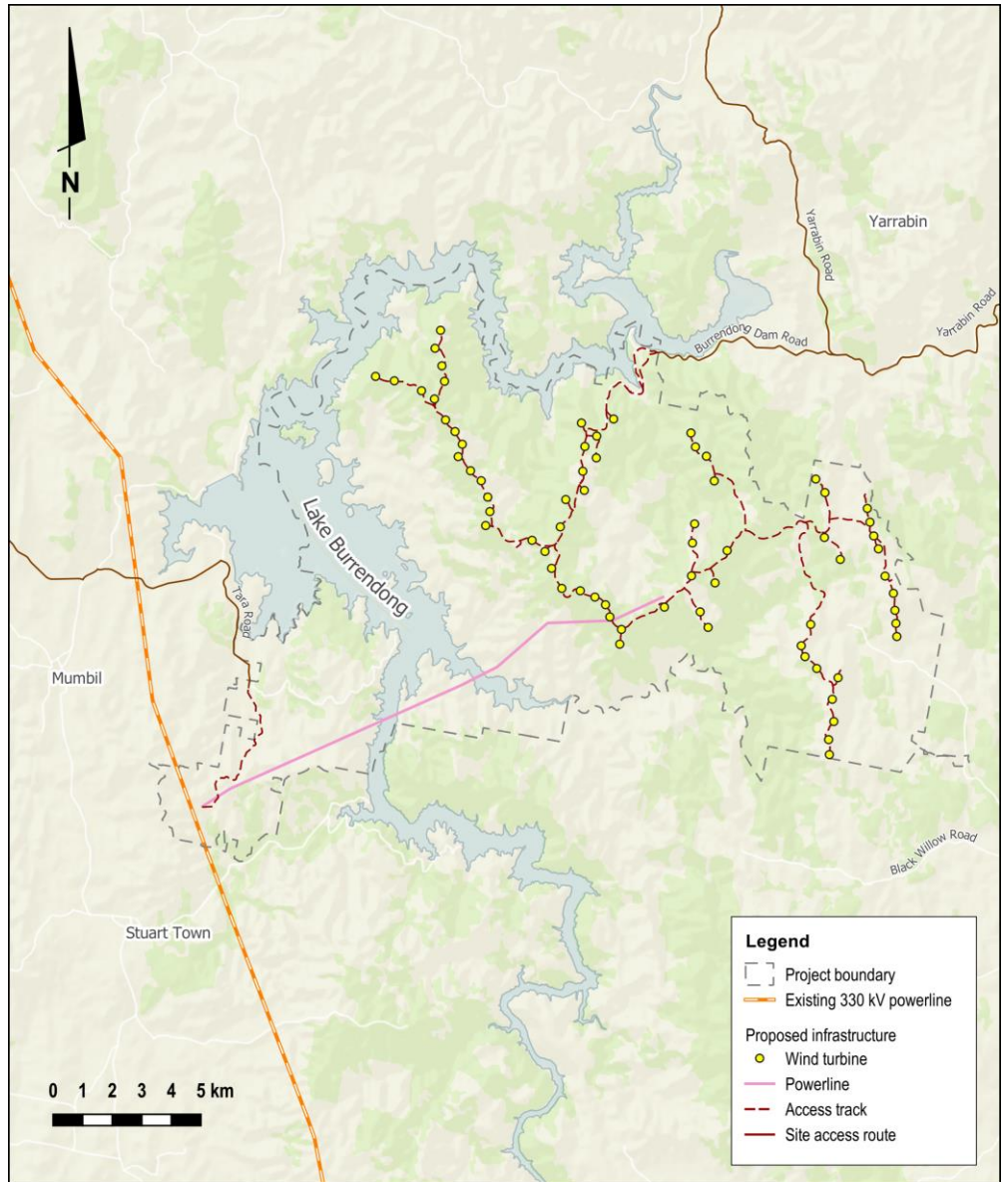
The proposal involves up to 70 wind turbines with a generation capacity of 400-500 megawatts.

## Planning & assessment

Utility-scale wind farms in NSW are considered State Significant Development and assessed by the NSW Department of Planning, Housing and Infrastructure

- 1 Site selection and preliminary investigations ✓
- 2 Initial concept and consultation ✓
- 3 Referral (updated) to the Australian Department of Climate Change, Energy, the Environment and Water (DCCEEW) for review under the Commonwealth *Environment Protection and Biodiversity Conservation Act 1999* (EPBC Act). ✓
- 4 Scoping Report (updated) submitted to the NSW Department of Planning and Environment (DPE) ✓
- 5 Determination on EPBC Act referral by DCCEEW - controlled action with assessment under bilateral agreement (Ref 2022/09268) ✓
- 6 Secretary's Environmental Assessment Requirements (SEARs) for the Environmental Impact Statement (EIS) issued by DPE ✓
- 7 Studies, assessments, design ✓
- 8 Finalising EIS for lodgment ✓
- 9 Development application (DA) and EIS lodged with DPE ✓
- 10 DA and EIS on public exhibition and open for submissions ✓
- 11 Response to submissions and further information lodged with Department of Planning, Housing and Infrastructure (DPHI, formerly DPE), ✓
- 12 Assessment and recommendation by DPHI, referral to Independent Planning Commission (IPC) **WE ARE HERE**
- 13 Determination by IPC
- 14 Determination by DCCEEW

## Burrendong Wind Farm site map – 70 wind turbines



The proposal involves a layout of 70 wind turbines with a generation capacity of 400-500 MW.

### Next steps

After receiving more than 50 unique submissions during public exhibition, the DPHI will complete its assessment and recommendation, and refer the application to the NSW Independent Planning Commission (IPC) for determination. Final approval under the Commonwealth *Environment Protection and Biodiversity Conservation Act 1999* (EPBC Act) will also be required from the Australian Department of Climate Change, Energy the Environment and Water (DCCEEW).

### Thank you

Thank you to all those who have engaged with us on this project to date. Comments and suggestions are welcome at any time and can be sent directly to the project team via the details below. **We wish everyone a safe and enjoyable festive season and look forward to updating you again in 2025.**

### More information

Tel - 1800 731 296

Email - [info@burrendongwindfarm.com.au](mailto:info@burrendongwindfarm.com.au)

Register for newsletters - [arkenergy.com.au/mailling-list-details](http://arkenergy.com.au/mailling-list-details)

Website - [burrendongwindfarm.com.au](http://burrendongwindfarm.com.au) or scan QR code right.

