

# Collinsville Green Energy Hub



Photograph of the project area

The Collinsville Green Energy Hub is a large-scale renewable energy generation project proposed for the Whitsunday region of Queensland. The site is in the Whitsunday Regional Council area and involves several large grazing properties around Collinsville and Bogie, about 80 km south-west of Bowen.

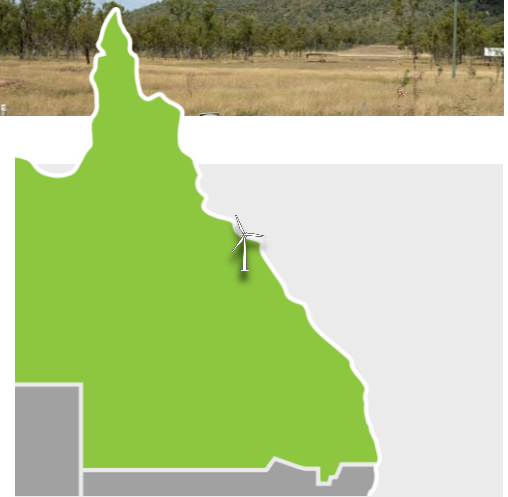
It is within the Queensland Government's Northern Queensland Renewable Energy Zone, one of the key regions in Queensland identified as optimal for new renewable energy projects.

The project is at an early stage. Work underway includes wind resource monitoring, cultural heritage surveys with Traditional Owner groups, technical studies for electrical and civil design, on site ecology and environmental surveys, grid connection studies, and consultation with the community and local stakeholders.

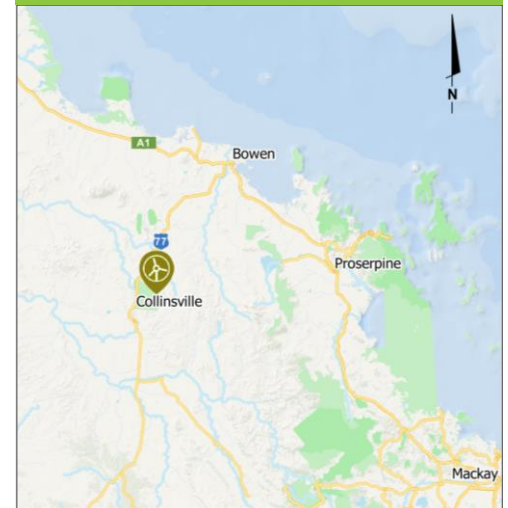
As more information from on site investigations and technical studies becomes available the proposed design is being refined and modified. It is estimated the project will have a generation capacity of up to 3,000 megawatts.

The project team is aiming to commence the assessment process early next year. Target start of construction is early 2027 and it is estimated construction will take about three years, with target for completion in 2031.

If you're interested to learn more visit [collinsvillehub.com.au](http://collinsvillehub.com.au), send us an email to [info@collinsvillehub.com.au](mailto:info@collinsvillehub.com.au), sign up for newsletters or come and say hello to the team at the Collinsville Green Energy Hub information centre in Collinsville.



## Location



- Expected to create 350+ jobs during construction and 15-30 ongoing jobs for operation.
- Expected to generate ~\$1 billion in local and regional expenditure.
- Economic benefits for the Whitsunday, Mackay, Burdekin and Isaac Regional Council areas.
- Capacity of up to ~3,000 megawatts
- Start of construction target - 2027
- Target for completion - 2031
- Project lifespan of up to 30 years



## What can the Collinsville Green Energy Hub bring to its local and regional communities?

**JOBS** - Expected to generate 1,000 direct and indirect jobs, including more than 350 direct jobs at peak construction and 15-30 ongoing jobs for maintenance and operations.

**ECONOMIC BOOST** - Capital investment of \$7.5 billion. Expected to generate a significant economic boost for the Whitsunday, Mackay, Burdekin and Isaac Regional Council areas, and about \$1 billion in local and regional expenditure, value-add and household income. Construction would generate significant expenditure within the local, regional and Queensland economy, including work for contractors and increased patronage for surrounding accommodation, retail, service and hospitality businesses.

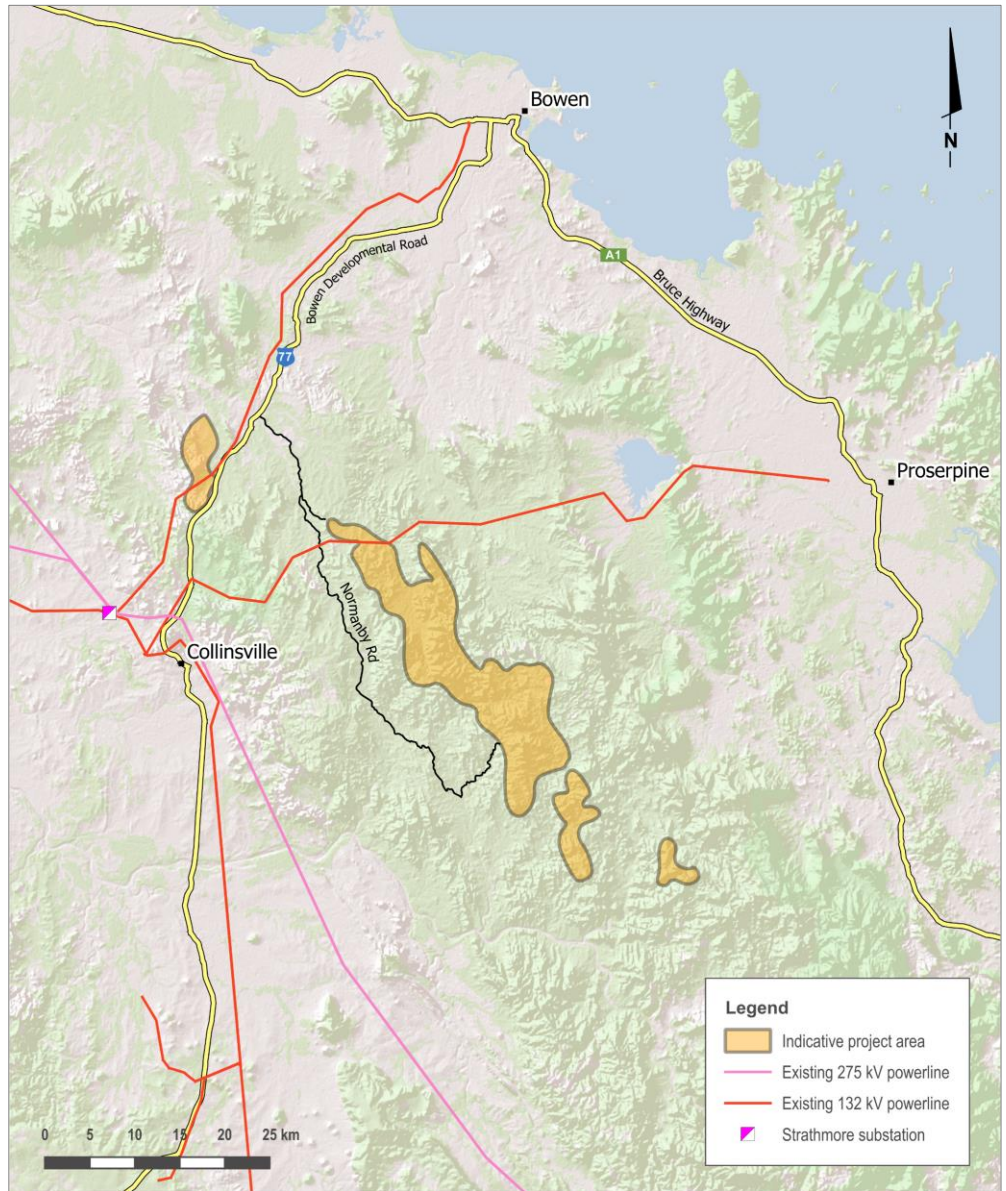
**OPPORTUNITIES FOR TRADITIONAL OWNERS** - Ark Energy works closely with First Nations stakeholders to ensure preservation of cultural heritage on project sites and where appropriate make agreements with Traditional Owner groups that will provide meaningful financial, employment and training benefits.

**COMMUNITY BENEFIT PROGRAM** - A program to share the benefits and support local initiatives, designed in consultation with the community, with funding from the start of construction and for the life of the project.

**RENEWABLE ENERGY** - Renewable energy is the cheapest source of energy and more is needed to meet carbon emissions reduction targets and growing electricity demand, as fossil fuel sources of electricity are retired over the next few years. Growth in renewable energy capacity will put downward pressure on electricity prices and deliver more affordable, cleaner, reliable electricity.

**NET GAINS FOR ECOLOGY** - A goal of Ark Energy for all of its projects is to achieve a net gain for biodiversity and key species in the project area over the longer term. This includes minimising the environmental impacts and committing to initiatives such as rehabilitation of the construction disturbance, strategic environmental offset management areas, and improved land management regimes for fire, weed and pest control.

## Collinsville Green Energy Hub project area



The project area for the Collinsville Green Energy Hub is near Collinsville and south-west of Bowen.

**Did you know?** Hosting renewable energy infrastructure is a productive land use that's complementary to agriculture and can provide a reliable supplementary income stream. Livestock are unaffected by wind turbines and will often use the towers for shelter or shade.



### More information

**Visit** - Collinsville Green Energy Hub Office & Information Centre, 47 Railway Road, Collinsville. Please check the window and project website for open times.

**Tel** - 1800 731 296

**Email** - [info@collinsvillehub.com.au](mailto:info@collinsvillehub.com.au)

**Newsletters** - register at [arkenergy.com.au/mailling-list-details](http://arkenergy.com.au/mailling-list-details) for email news, or to receive newsletters by post, send the project team your address and a request to be added to the mail (post) list.

**Website** - [collinsvillehub.com.au](http://collinsvillehub.com.au) or scan QR code right



Scan QR code to visit the project website