

# Boomer Green Energy Hub



A photomontage showing what the wind farm might look like from Apis Creek Road, Mount Gardiner.

The Boomer Green Energy Hub is a large-scale renewable energy generation project proposed for a group of pastoral properties about 100 km north-west of Rockhampton and 30 km south-west of Marlborough in Central Queensland.

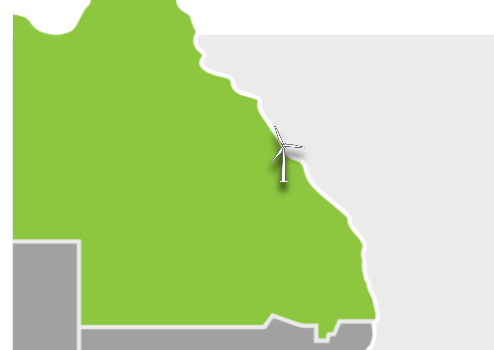
It involves land in the Central Highlands Regional Council, Livingstone Shire Council and Rockhampton Regional Council areas.

The project is in early development. Work underway includes wind resource monitoring, cultural heritage studies with the Traditional Owners, the Barada Kabalbara Yetimarala People, environmental assessment work, consultation, and civil and electrical design.

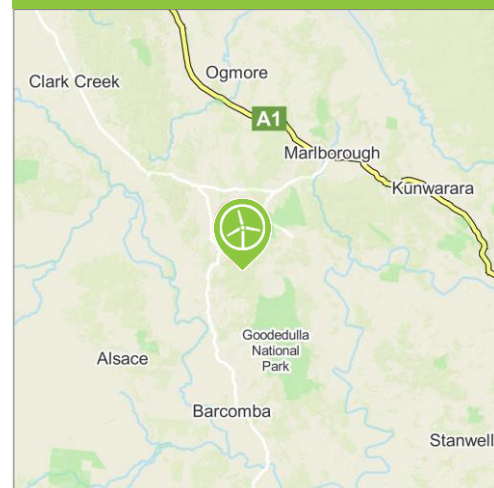
As findings from assessment and technical studies become available, the design is being refined and modified. The design is expected to involve a wind farm with 130-140 wind turbines, and potential for solar will be assessed in the future. It is estimated the project will have a generation capacity of up to 1,000 megawatts.

The project team is working towards lodging the development application and environmental assessment reports mid-2025. Target start of construction is late 2027 and completion in early 2031.

If you're interested to learn more visit [boomerhub.com.au](http://boomerhub.com.au), send us an email to [info@boomerhub.com.au](mailto:info@boomerhub.com.au), sign up for newsletters or come and say hello at the Boomer Green Energy Hub office and information centre in the Rockhampton CBD.



## Location



- Expected to generate >\$500 million in local and regional expenditure.
- Expected to create 350+ jobs during construction and ~20 ongoing full-time jobs for operation.
- Economic benefits for the Central Highlands Regional, Rockhampton Regional and Livingstone Shire Council areas.
- Capacity of up to 1,000 megawatts
- Construction start target – late 2027
- Target for completion – early 2031
- Project lifespan of up to 30 years



## What can the Boomer Green Energy Hub bring to its local and regional communities?

**JOBS** - Expected to generate more than 350 direct jobs during the construction period and about 20 ongoing full-time jobs for maintenance and operations.

**ECONOMIC BOOST** - Capital investment of ~\$3 billion. Expected to generate a significant economic boost for the Rockhampton, Livingstone Shire and Central Highlands areas, and >\$500 million in local and regional expenditure, value-add and household income. Construction would generate significant expenditure within the local, regional and Queensland economy, including work for contractors and increased patronage for surrounding accommodation, retail, service and hospitality businesses.

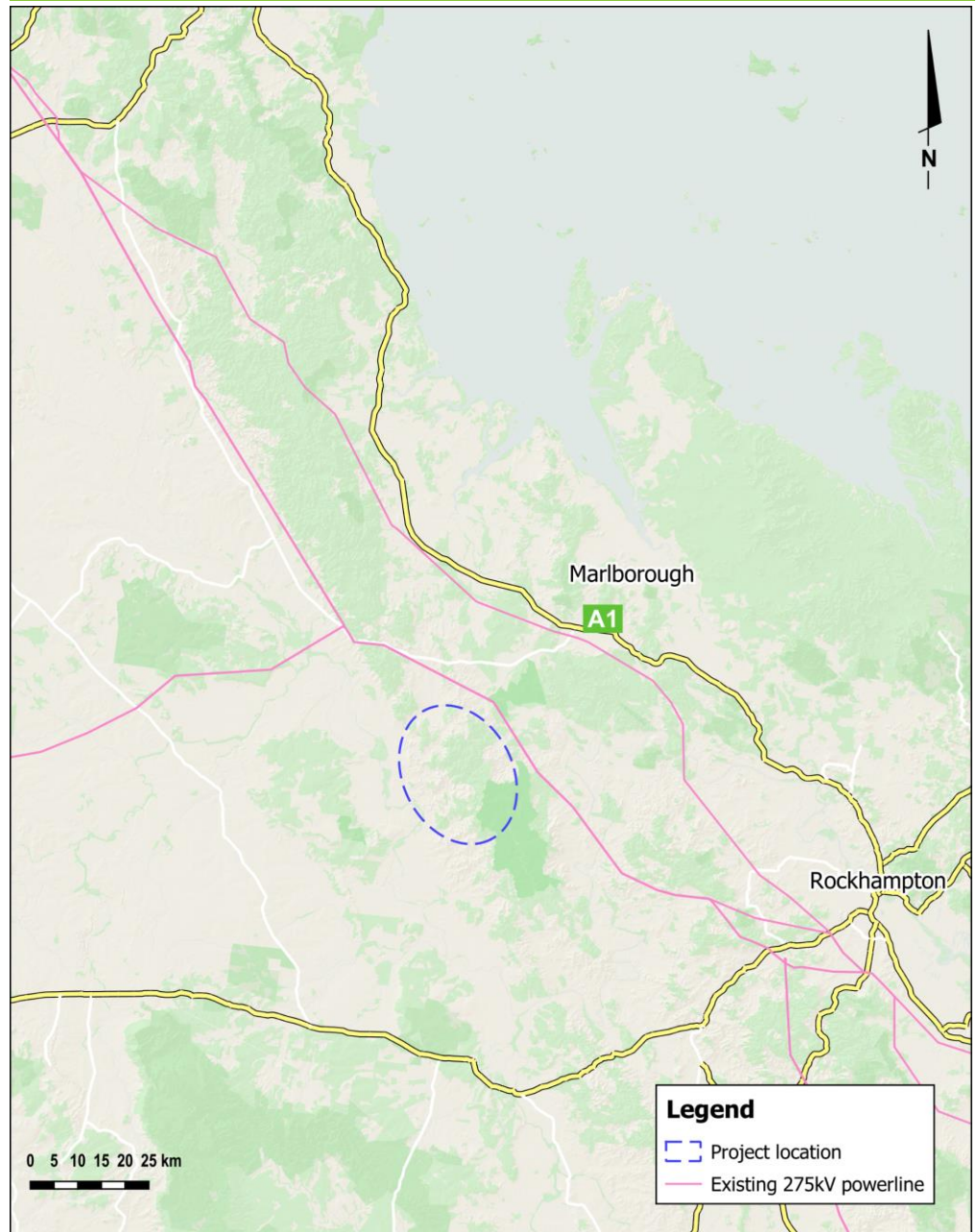
**OPPORTUNITIES FOR TRADITIONAL OWNERS** - Ark Energy works closely with First Nations stakeholders to ensure preservation of cultural heritage on project sites and where appropriate make agreements with Traditional Owner groups that will provide meaningful financial, employment and training benefits.

**COMMUNITY BENEFIT PROGRAM** - A program to share the benefits and support local initiatives, designed in consultation with the community, with funding from the start of construction and for the life of the project.

**RENEWABLE ENERGY** - Renewable energy is the cheapest source of energy and more is needed to meet carbon emissions reduction targets and growing electricity demand, as fossil fuel sources of electricity are retired over the next few years. Growth in renewable energy capacity will put downward pressure on electricity prices and deliver more affordable, cleaner, reliable electricity.

**NET GAINS FOR ECOLOGY** - A goal of Ark Energy for all of its projects is to achieve a net gain for biodiversity and key species in the project area over the longer term. This includes minimising the environmental impacts and committing to initiatives such as rehabilitation of the construction disturbance, strategic environmental offset management areas, and improved land management regimes for fire, weed and pest control.

## Boomer Green Energy Hub project area



*The project area is about 100 km north-west of Rockhampton and 30 km south-west of Marlborough.*

**Did you know?** Hosting renewable energy infrastructure is a productive land use that's complementary to agriculture and can provide a reliable supplementary income stream. Livestock are unaffected by wind turbines and will often use the towers for shelter or shade.



### More information

**Visit** - Boomer Green Energy Hub Office & Information Centre, 1/24 William Street, Rockhampton CBD.

**Tel** - 1800 731 296

**Email** - [info@boomerhub.com.au](mailto:info@boomerhub.com.au)

**Newsletters** - register at [arkenergy.com.au/mailling-list-details](http://arkenergy.com.au/mailling-list-details)

**Website** - [boomerhub.com.au](http://boomerhub.com.au) or scan QR code right



Scan QR code to visit the project website